



The Wisconsin Idea:
*"The boundaries of the University
 are the boundaries of the State."*

2017 Annual Report

Dunn County UW-EXTENSION

3001 US Hwy 12 East, Suite 102
 Menomonie, WI 54751
 715-232-1636 | dunn.uwex.edu

About Us

We teach, learn, lead and serve, connecting people with the University of Wisconsin, and engaging with them in transforming lives and communities. Stop by the UW-Extension office to chat with our staff on current project or programs today!

Our Services



Agriculture

Strengthen and foster competitive agriculture practices while conserving and protecting natural resources.



Family Living

Enriching the lives of Dunn County families through education & community connections.



FOODWISE

To advance healthy eating habits, active lifestyles, and healthy community environments for families through nutrition education.



4-H Youth Development

Enhances the lives of members and their families while strengthening Dunn County's communities through volunteer service, civic involvement, and programing.

An EEO/AA employer, University of Wisconsin-Extension provides equal opportunities in employment and programming, including Title VI, Title IX, and the Americans with Disabilities Act (ADA) requirements.



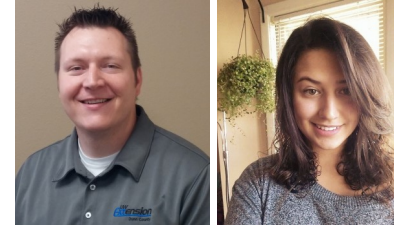
UWEX DUNN COUNTY 2017 PROGRAM HIGHLIGHTS

4-H YOUTH DEVELOPMENT

The Dunn County 4-H Youth Development program empowers youth in grades K-13 to reach their full potential while learning citizenship, leadership, and life skills. For more than a century, Wisconsin has been a leader in 4-H youth development, giving young people throughout the state an opportunity to learn new skills, gain self-confidence and contribute to their communities. Members learn by doing through hands on projects, activities, and volunteer certified adult mentorship. Long term university-based studies have shown that those who participate in 4-H are 4 times more likely to give back to their communities, and 2 times more likely to make healthy choices. That means that investing in 4-H makes good sense in both the short term and the long term.

4-H's history and roots are in agriculture, but today's 4-H programs have a new focus on healthy living, personal growth, science, engineering, and technology. This work is done through the traditional 4-H community club program, after school partnerships and other various community youth programs. In 2017, Dunn County had 15 traditional community clubs and 8 clubs based on interests like shooting sports, dogs, horses, and youth activities. These clubs were supported by over 100 trained and screen volunteers.

In 2017, Jason was promoted to Area Extension Director and his final day as an educator was June 30th, 2017. Stephanie Hintz continued to support the 4-H Program for the duration of the year.



Jason Hausler

4-H Youth Development Agent

Stephanie Hintz

4-H Program Assistant

These clubs were supported by over 100 trained and screen volunteers.



Kristen Bruder

Family Living
Educator

FAMILY LIVING

Family Living Programs provides leadership to promote education, resources and partnerships that create an environment where families and their communities can thrive. Today's diverse families form the foundation of these strong Wisconsin communities. By responding to the challenges facing today's families with evidence-informed programs and practices, as well as local knowledge, Kristen helped to create an environment where families have the information, skills and assets they need to improve their quality of life and contribute to the Dunn County Community. In 2017, Kristen was promoted to Area Extension Director and her final day as an educator was June 30th, 2017.

Stephanie Hintz has assisted with the transition by replacing Kristen on boards she was involved with and joining coalitions.

AGRICULTURE & NATURAL RESOURCES

Agriculture and Natural Resources Extension Program aims to make Wisconsin agriculture strong and competitive while conserving and protecting natural resources. Education about agriculture, horticulture and natural resources protects our economy, our food supply, our natural environment and our future. As an Agricultural Agent, Katie assists constituents in Dunn County to utilize UW research and information to solve problems and take advantage of new business opportunities. Her work with clientele looks to balance farm profitability and production of high quality food, horticultural crops, fiber, and plant material with protection of the natural environment.



Katie Wantoch

Agriculture Agent,
*Specializing in
Economic Development*



Sandy Tarter

FoodWise Coordinator

Karen Fritz

FoodWise Educator

FOODWISE

FoodWise is a UW- Extension nutrition education program that helps limited resource families and individuals choose healthful diets, purchase and prepare healthful food and handle it safely, and become more food secure by spending food dollars wisely. We EXPOSE people to new fruits and vegetables and why they are important. We TEACH parents how to plan and prepare healthy meals. We EMPOWER families with limited financial resources to choose healthful diets and become more food secure by spending food dollars wisely. We SUPPORT communities in making the healthy choice, the easy choice where people live, learn, work and play.



Our **PURPOSE**: We teach, learn, lead and serve, connecting people with the University of Wisconsin, and engaging with them in transforming lives and communities.



Our **VISION**: To be a thriving, well-known and sought-out educational resource that reflects the rich diversity of the state.



Our **VALUES**: We strive to live by Life long learning, Community, Discovery, Inclusiveness, Relationships, and Respect.

Our educational program areas demonstrate how these fundamental principles become reality through the work that we are doing for Wisconsin residents.

Our educational programs are developed and measured against our strategic directives, aiming to build:

- Stronger communities
- Food safety, security and health
- Resilient and productive environments
- Thriving youth, families and communities

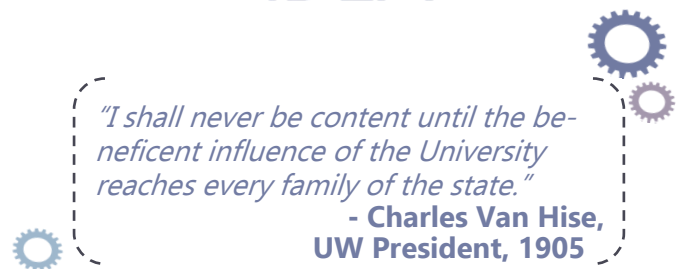
The Mission of UW-Extension

Through the University of Wisconsin-Extension, all Wisconsin people can access university resources and engage in life-long learning, wherever they live and work.

Fundamental to this mission are UW-Extension’s partnerships with the 26 UW campuses, the county and tribal governments, and other public and private organizations. Fulfilling the promise of the Wisconsin Idea, UW-Extension extends the boundaries of the university to the boundaries of the state and helps the university establish mutually beneficial connections with all its stakeholders.

For millions of Wisconsin individuals, families, businesses and communities, UW-Extension is the doorway to their public university, enabling them to: Achieve personal growth, professional success and organizational effectiveness through formal and informal learning; Address the changing needs of the state and society by applying relevant university research; and Gain greater access to educational, cultural and civic resources through the use of technologies.

In addition, UW-Extension supports the University of Wisconsin System mission by: Providing strong leadership for the university’s statewide public service mission; Integrating a scholarly approach to outreach across many academic disciplines; and Addressing the specific educational needs of under-served, disadvantaged and non-traditional students. Approved by UW Board of Regents Sept. 10, 2004.



"I shall never be content until the beneficent influence of the University reaches every family of the state."

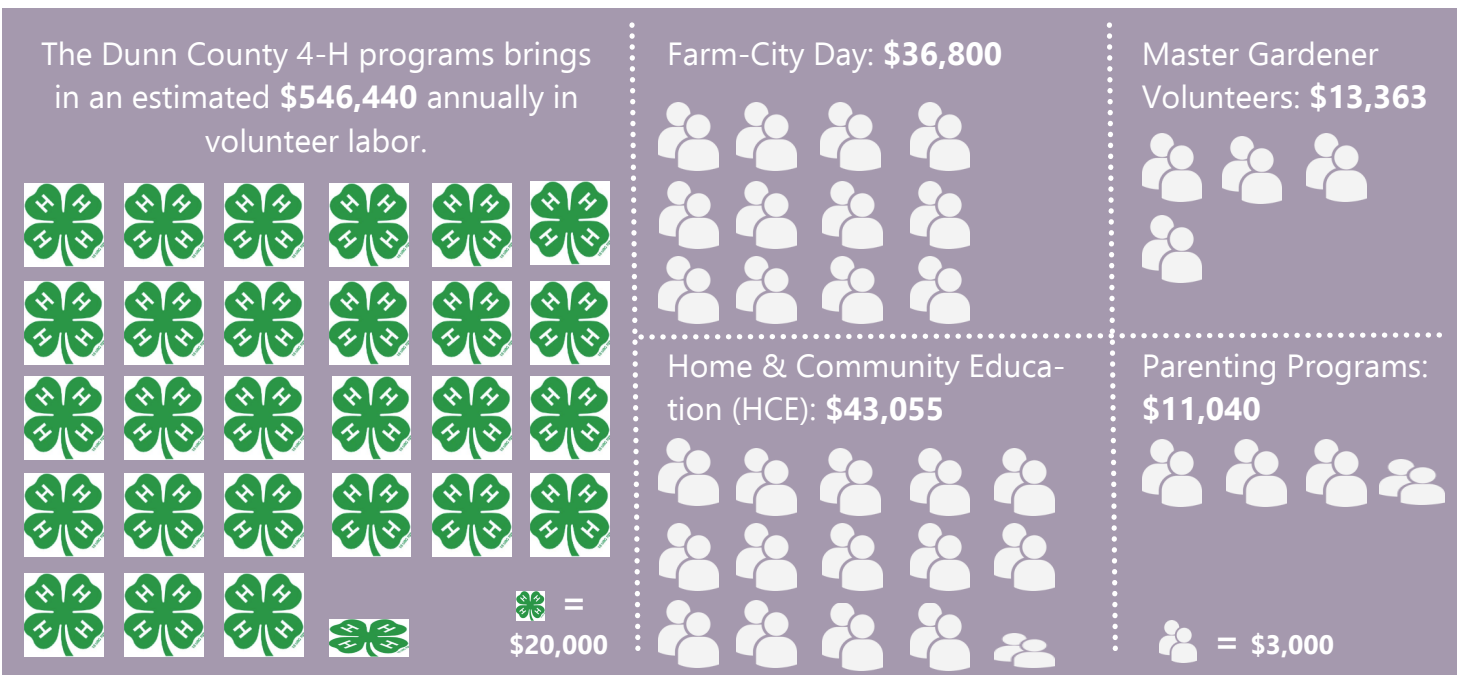
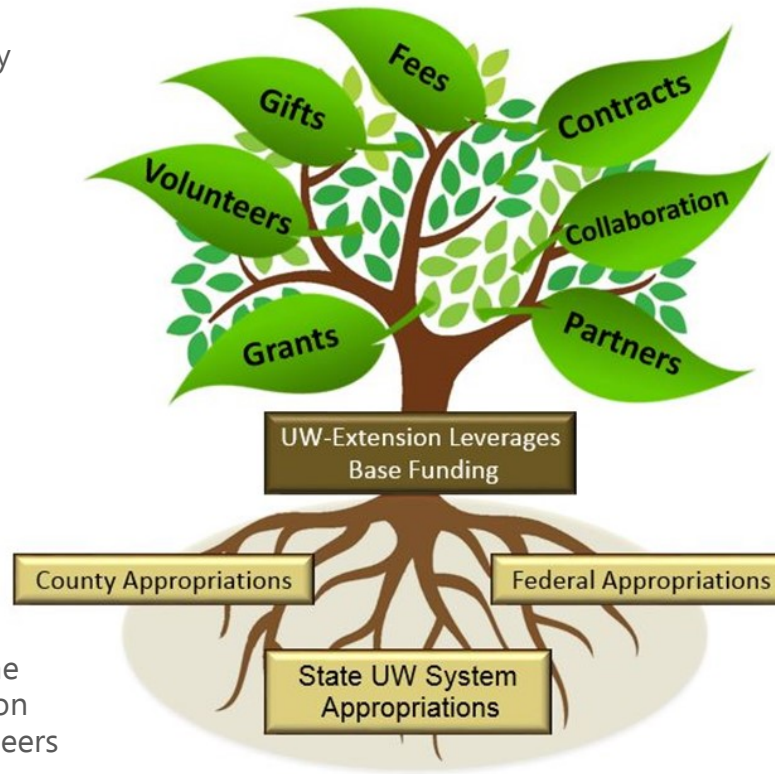
**- Charles Van Hise,
UW President, 1905**

Every \$1 invested in Dunn UWEX yields \$3.99

Total volunteer value to Dunn County: \$674,698

The work of UW-Extension can be far-reaching because of our work to empower local volunteers. Dunn County UWEX meaningfully engages volunteers to deliver high-quality educational programs, and has for a very long time, giving them the tools and confidence to extend the outreach of our programming. This investment in volunteers allows us to be good stewards of our state and county resources—creating greater citizenship engagement and increasing the work we can accomplish within Dunn County. Each volunteer is provided training in order to ensure the quality of the service they provide, increasing their commitment and their impact.

Each hour a volunteer serves is worth \$23.06 in Wisconsin, according to Independent Sector, an organization that studies volunteer contributions to organizations. The graphs on this page represent the added value that our work with volunteers and the hours our volunteers provide to Dunn County. The added value of volunteers helps us to provide more on less. If you would like to learn more about our volunteers or what they do, please let us know!



35

Dunn County UWEX supports 35 Community Clubs

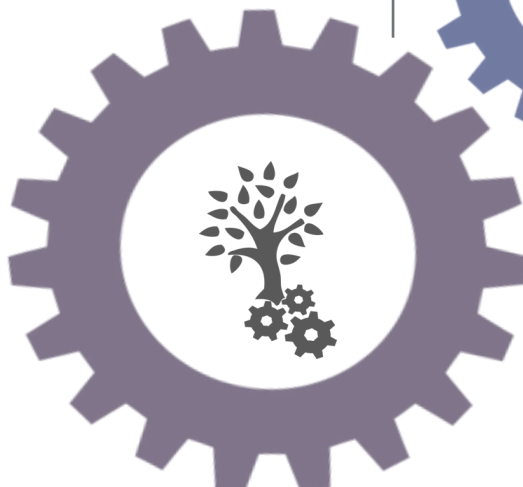
15 Community 4-H Clubs, (including 22ers, Cedarlings, Colfax Comets, Connorsville Comets, Countyliners, Elk Meadow, Hay River Helpers, Ideal, Knapp Valley, Little Elk Creek, Menomin Helping Hands, Millroad Rockets, Missouri Valley, Rock Falls Rockets, Willing Workers) as well as 8 countywide 4-H interest clubs (Dairy Judging Project, Dog Project, Horse Project, Horseless Horse Project, Meat Animal Project, Shooting Sports, Small Animal Project, and Youth Activities Council. 11 HCE Chapters, and Master Gardener Volunteers.



25

UWEX educators have collaborated with 25 community agencies

Bridge to Hope, House of Hope, Catholic Charities, Churches, Children's Service Society, Eau Claire Family Resource Center, Head Start, Stepping Stones, Workforce Resource, Arbor Place, Positive Alternatives, United Way, Red Cross, West CAP, Mayo Health Systems, Chamber of Commerce, Leadership Menomonie, UW-Stout, Chippewa Valley Technical College, Dunn County Farm Bureau and Young Farmer Agriculturist, Main Street Menomonie & School Districts.



22

UWEX educators collaborated with 22 County entities

W2, 8 Senior Meal Sites, WIC, Public Health, Immunization Clinics, CJCC, Juvenile Justice Subcommittee, Birth-3, Diversion Court, Energy Assistance, the Dunn County Fair Board, Human Services Department of Children and Families, Fish & Game, Land and Water Conservation and the Economic Development Corporation.



13

UWEX educators led or participated in 13 community committees

Dunn County Soil and Water Health Partnership, Western Wisconsin Ag Lenders, Chippewa Valley Farm-City Day, Dunn County Dairy Promotion Committee, CVTC Farm Production Management Program Advisory Committee, Emergency Food & Shelter Collaborative, Resiliency Committee, Truancy Prevention, Dunn County Health Watch, Dunn County Partnership for Youth, Dunn County Health Improvement Cooperative, and Eat Well Dunn County.



nEXT GENERATION OF EXTENSION

The nEXT Generation project began in February of 2016 with the goal of building a new organizational structure that would make Cooperative Extension more relevant, flexible, and digital, while addressing a structural budget deficit. To streamline the project, the Executive Sponsors formed a workgroup in the late fall of 2016 to create recommendations for planning and implementation the project. This group began its work in December of 2016, and developed the first nEXT Generation organizational structure in the Institutes and Centers decision document. This structure was approved by the Executive Sponsors on June 30, 2017.

Since then, Cooperative Extension has been implementing the new organizational structure, beginning with the Geographic structure of Zones and Areas, followed by Operations. In the late summer of 2017, Cooperative Extension was beginning to implement the Departmental structures, beginning with Institutes, when the UW Colleges and UW-Extension restructuring proposal was announced in October. On November 9, 2017 the Board of Regents approved restructuring UW Colleges and UW-Extension. As a result, the UW-Extension division of Cooperative Extension will be reassigned to UW-Madison, effective July 1, 2018.

Staffing Changes:

The new organizational structure provided Jason Hausler and Kristen Bruder the opportunity to move up into Area Extension Director positions in different geographical locations. Effective July 1st, 2017, Catherine Emmanuelle began the role of Area Extension Director for Dunn, Chippewa, and Eau Claire Counties. Stephanie Hintz moved from her role as 4-H Program Assistant to Youth & Family Educator effective Jan 1st, 2018. Luisa Gerasi-mo started as the new 4-H Program Coordinator on Jan 15th, 2018. Michelle Bachand and Bethany Peterson began their roles as Support Specialists in early 2018.

NEXT GENERATION OF AGRICULTURE—A SUCCESS STORY

The 10th annual Chippewa Valley Farm-City Day was held on September 8th and 9th, 2017 at the Bears Grass Dairy farm in Eau Claire County. Saturday, the event was open to the public and had approximately 1,000 children and adult visitors. Tours were provided on tractor-driven wagons with local technical college students acted as tour guides and provided information on the farm's cropping practices, land conservation efforts, animal care and management of their dairy herd. Attendees were dropped off at an educational tent which featured agricultural displays and an opportunity to learn more about agriculture. A kids play area and petting zoo were also featured.



In addition, the planning committee also offers a full-day of activities for local elementary school children on Friday. Over 900 school children from Chippewa, Dunn and Eau Claire County toured the farm and learned more about modern agricultural practices.

This annual event has been supported by area businesses (both financial and in-kind donations) and is offered at no cost for the public to attend. A lunch meal is served on Saturday and has been a fundraiser for the county 4-H club that partners with the committee.

Since 2010 Katie Wantoch has taken an active role in educating 10,500 local adult and youth in the Chippewa Valley on modern agricultural practices as part of the annual Chippewa Valley Farm-City Day event. She has chaired the planning committee for the past five years and annually coordinate this event with UW-Extension agriculture agents and professionals from Chippewa, Dunn, and Eau Claire counties. This is a not-for-profit event that is supported by local donations and in-kind sponsorships, of which Katie has successfully assisted in raising over \$32,500.