



## Agriculture

Katie Wantoch | *Associate Professor and Agriculture Agent, Specializing in Economic Development*

- An outreach and public relations effort for farmers where farmers increased awareness of extension resources to connect and build relationships and improve their lives and farms.

By participating in the Eau Claire Farm Show on March 1 and 2, farmers and ag professionals were made aware of current Extension research and educational programs and information. The annual show provides a forum to teach and inform this audience about current extension resources and programming efforts.

Katie Wantoch, Dunn County Farm Management Educator, Lyssa Seefeldt, Eau Claire County Dairy and Livestock Educator, Ryan Sterry, Northwest Dairy Educator, and Jerry Clark, Chippewa County Crops and Soils Educator, provided educational program and research results to 287 area farmers and agriculture industry professionals. Direct contacts were tracked through tally counters and number of extension resources distributed. Extension publications regarding farm financial management, pest, and nutrient management, custom rates, and calf and heifer raising were popular along with Extension branded pencils. One farmer commented, "I greatly appreciate all you do for agriculture." Educators visited with four county extension committee members from four different counties who greatly appreciated our Extension efforts and programs along with being at the annual show.

- A monthly column in WI Agriculturist magazine for farmers and Ag professionals, where readers learn about farm management and available Extension resources. The purpose of this effort is to improve farm business decision-making.
- A podcast series, AgriVision, for farmers and ag professionals, where UW Extension educators answer Farm Management questions and share knowledge and expertise on how farmers can improve their farm management skills.
- A training for people who use pesticides to produce an agricultural commodity on property they or their employer owns or controls, where participants learn to safely apply restricted-use pesticides. The goal of this program is to increase personal safety of employees and farmers who use pesticides.
- Updating and adapting a financial management curriculum for beginning, female, and other farmers into a more relevant format for use in-person, stand-alone educational videos, and an on-line course. This curriculum will assist farmers in identifying strengths and weaknesses of their business to assist them in making decisions that will improve their farm profitability.

## Community Development

Addison Vang | *Community Development Educator*

This was an exciting month for me as I was able to meet with other new Extension staff at the New Colleague Orientation cohort in Madison. It was great to be able to visit and learn about the UW-Madison Campus and learn about all the resources and staff available to us as we navigate Extension. This really was a welcome change from all the virtual meetings and to be in person meeting others individuals starting out with Extension. I look forward to continuing the New Colleague Orientation program and learning more about Extension and look forward to our last in person meeting in Stevens Point.

In April we are hosting a HMoob Farm Financial Workshop. This workshop will support HMoob farmers to build the capacity to expand their farm operations. The focus of the workshop is training and awareness of financial resources accessing farm loans and grants. The workshop will be conducted in the HMoob language by professionals from the agricultural field.

- An educational program for underserved Hmong Farmers, where they learn how to complete financial documents and learn of financial resources to support their farm businesses. The goal is to reduce challenges and barriers to support and/or expand underserved farm operations with introduction of financial practices and increased knowledge to access financial resources.
- Planning a statewide conference to support a Hmong economic development summit. The goal is to build a network of underrepresented entrepreneurs and business owners to learn and support one another.



- Strategic planning with the nonprofit Literacy Chippewa Valley during which leaders identified organizational needs, as well as short and long-term goals. The purpose of the plan is to help the organization best use its resources as it works to address regional literacy needs.
- Planning for a series of virtual FEED workshops for food business entrepreneurs in Wisconsin. The goal of this effort is for entrepreneurs that are considering expanding or starting a food based business to learn about types of food business and what is involved in operating these types of business so that they can decide if they want to pursue their business idea and what it would entail.

## Horticulture

Margaret Murphy | *Horticulture Outreach Specialist*

Despite the cool temperatures, gardening is on people's minds. Horticulture inquiries are coming in regularly. Recent questions have been on tree issues such as winter burn, fungus on bark and pruning apple trees; fungal issues on lawns and composting.

Requests for gardening programs are coming in as well. Recently, I have presented programs on patio gardening, pruning shrubs and spring planting.

In April, I will be at the UW Stout Wellness Fair providing horticulture materials and being available to answer yard and garden questions. I will also be presenting to the Dunn County Wisconsin Association for Home and Community Education (HCE) on indoor gardening.

New for 2022, I am doing a youth gardening program with the Boys and Girls Club and FoodWise educators at River Heights Elementary school. We are doing a six-week program starting in June. This program will provide an opportunity for hands-on learning that teaches kids how to food garden while learning best practices in the garden. Studies show that kids who garden tend to develop life-long healthy eating habits.

Dunn County Master Gardener Volunteers are also busy preparing for a full season of garden programs which will include their continued volunteer service at the Dunn County Jail Garden. In 2021, this program donated 3465 pounds to the Stepping Stones Food Pantry.

In 2022, Master Gardeners will provide educational support at the Menomonie Community Garden and continue their ongoing work on sustainable landscaping / using natives / removing invasive species at various sites.



- An online webinar for consumer horticulture audiences across the state where participants learned about how to successfully grow strawberries in containers, including plant selection and methods for management. As a result of this program, respondents reported that they plan to implement practices to select the appropriate container and variety of strawberry plant, properly water and fertilize their plants, and reduce disease pressure by spacing their plants and disinfecting the containers.
- An online webinar for consumer horticulture audiences across the state where participants learned about major apples pests and management techniques to properly address each pest causing the least amount of environmental contamination.
- Planning for a statewide webinar series for consumer horticulture audiences where participants will learn about pollinator decline, climate change and environmental contamination and pollution. The goal of this effort is to increase adoption of horticultural practices addressing identified environmental issues in Wisconsin.



Extension

UNIVERSITY OF WISCONSIN-MADISON  
DUNN COUNTY

# March 2022 Report

## Health and Well-Being

Sandy Tarter | *FoodWise Coordinator*

Nancy Fastner | *FoodWise Educator*

Joy Weisner | *FoodWise Educator*

Jael Wolf | *FoodWise Educator*

I would like to highlight some exciting news for our Menomonie Farmers Market-Market Match program. Last time I mentioned that through the Health Dunn Right-Chronic Disease Prevention team, we applied for and received a \$2000 grant from Marshfield Clinic. Since then, we've applied for a \$4000 grant through Mayo Health System's Community Outreach program. I'm happy to report that our request was approved. We can now be more assured of providing all FoodShare participants continued matches to their purchases for the entire market season-May thru September. This helps to relieve the food insecurity burden many residents have faced during the past year. Our thanks goes out to Marshfield Clinic and Mayo Health System!

Stop by the Extension and Health Dunn Right tables at the UW Stout Wellness Fair April 6th, 10:00 am to 2:00 pm!

Ongoing programming:

**WIC:** Nancy is offering virtual events for families and planning in-person events at the Farmers Market this summer.

**Virtual StrongBodies:** Nancy, Sandy, and Joy continue to lead and provide nutrition lessons for the spring statewide series. Jael is set to begin her StrongBodies leader training.

**Workforce Resource:** Joy is planning upcoming spring virtual sessions that will be offered to Dunn residents.

**Boys and Girls Club:** We are working with Margaret Murphy in planning summer series

- A 12-week virtual strength training series for older adults where participants improve strength, balance, and flexibility. This effort is designed to help individuals stay healthy and socially connected during a difficult time of isolation.
- A 5-week nutrition education series to 1st graders in Locust Lane Elementary. The goal of this effort is for students to learn about eating healthy, being active, exploring fruits and vegetables, and the importance of hand washing.
- A 6-week nutrition education series to 3rd graders at Locust Lane Elementary to learn about the importance of eating five food groups, physical activity, and how to read a nutrition facts label. Following lessons, students are encouraged to choose a goal to try more fruits and vegetables at each meal.
- A newspaper article where readers learn about food product dating. The goal of this effort is to provide education on the various "best by", "use by" and "sell by" dates so that consumers can make an informed decision on the safety of foods.

## Positive Youth Development

Luisa Gerasimo | *4-H Program Educator*

The month of March began with my much-postponed vacation to warmer climes, and an ice storm here, which caused us to have to postpone the Tri-County Arts Performing Arts Festival in Cadott from March 5th to April 1st (no fooling!). This change meant finding a new venue and judges. Almost all the families wanted to try again, so fingers crossed for a fun Friday night in Chippewa where we will see speeches, plays and music from our amazing 4-H youth. +

Eau Claire and Dunn cooperated to offer a super fun Middle School Leadership Day at Beaver Creek Reserve - we learned a ton and even got to dump some sap buckets for the Reserve.

"4-H Art U", a series of six art classes for all grades, in conjunction with AIM and UW-Stout, is off to a good start with 3 classes down in March and 3 more to go in April - plus a student art show at the university to look forward to!

I met with colleagues from Clark and Eau Claire counties to plan our shared summer camp, which will be at Kamp Kenwood in early June. We have been busy interviewing bright young counselor candidates, including returning counselors from last year. I also met with two potential interns to share with Eau Claire county 4-H this summer via a Wisconsin community health program.

The month will end with a night of interviews for talented Dunn County 4-H youth who are hoping to win local awards and



Extension

UNIVERSITY OF WISCONSIN-MADISON  
DUNN COUNTY

# March 2022 Report

scholarships from our 4-H Leaders Council. Speaking of awards, this month I found out I had been honored with a state-wide Extension professional organization's Individual Diversity Award. It will be presented at our state Joint Council of Extension Professionals conference in Stevens Point.



"Art is the best!" -4-H 1st Grader

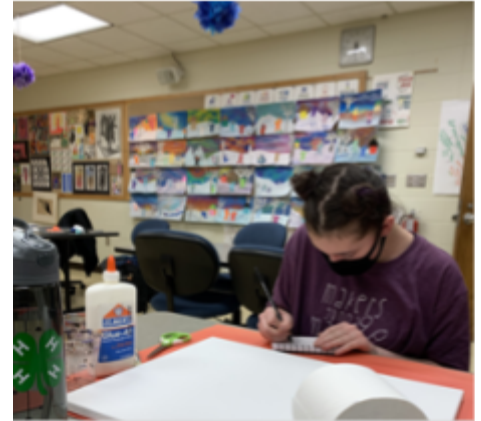
"This is our second year participating in an A.I.M. virtual art experience. I love how my children have learned new art techniques and ways to be creative. We wouldn't come up with these great art project ideas on our own, and Art U makes it easy with basic art supplies at home! Thank you!"

-4-H Mom



"I'm glad we are able to gather all the resources available to the community and to our teens in one place for them. Thanks again for everything you're doing!"

-Partner Org. Youth Advocate



"I'm so glad to have had this experience. I've thoroughly enjoyed using common everyday materials to enhance my artwork. I've always been fascinated by 3 dimensional paintings, however, I never could figure out how to accomplish such a piece. I was thrilled to learn how to by using toilet paper and cardboard on canvas."

-4-H Art U Participant

- A six session series of art classes for 4-H youth in three counties where families tap the energy and enthusiasm of UW-Stout art education students to learn creative art techniques while connecting with other youth in a virtual setting.
- Planning for the Tri-County Performing Arts Festival for 4-H youth, which gives youth the opportunity to perform and compete in front of judges in music, drama and speaking. The goal of the festival is to build key life skills while enjoying others' performances.
- Planning for a Middle School Leadership Day at Beaver Creek Reserve where youth from Dunn and Eau Claire Counties will participate in games and activities designed to help them develop leadership skills that they can then use in all aspects of their life.
- Ongoing support for an afterschool club for Hmong youth which builds community through 4-H activities, mindfulness moments, and goal setting activities. The goal of this effort is to support youth mental health and to keep youth connected to their peers and caring professionals.

## Human Development and Relationships

Stephanie Hintz | *Human Development and Relationships Educator*

As you may have already heard, I'm leaving my position as the Human Development and Relationships Educator for UW-Madison Division of Extension Dunn County, and my last day is April 1st, and yes this is no joke 😊

I wanted to take a moment to let you know how much I've enjoyed my time working in the Dunn County Community and I feel so grateful to have had the opportunity to work with so many passionate people who so deeply care about the place we live, work, and play.

If you would like to stay connected feel free to add me on LinkedIn: <https://www.linkedin.com/in/smhintz/>





Extension

UNIVERSITY OF WISCONSIN-MADISON  
DUNN COUNTY

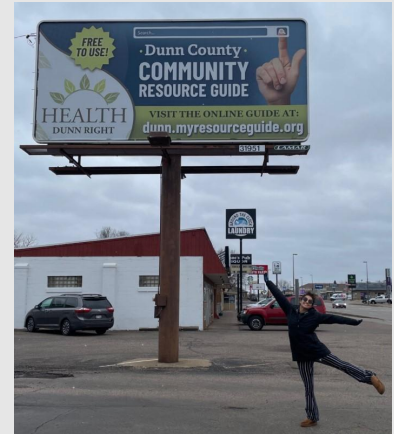
# March 2022 Report

Please, don't be a stranger!

Also, one more cool thing to celebrate! Did you know the Health Dunn Right Community Health Coalition created an extensive community resource guide? Check it out here: <https://dunn.myresourceguide.org/resources>

We're so excited about it we put up a billboard!

Thank you all again for being extraordinary colleagues to work with and learn from over the years. I will always hold the Dunn County community close to my heart!



## Support

Michelle Bachand | *Support Specialist*

This month I worked on a variety of activities, some of which include:

- Updating office contact and mailing lists.
- Proctoring Pesticide Applicator Training tests.
- Creating and distributing certificates of completion for various Extension programming.
- Website and social media updates.
- Preparing for the 4-H Middle School Games; assisting with registrations, receiving payments, creating reports.
- Assisting with the rescheduled 4-H Tri-County Performing Arts festival; updating the event schedule, judging sheets, and certificates.
- Updating internal budget tracking spreadsheets.
- Preparing mailings for a variety of upcoming events.
- The editing and captioning of eight videos for the Farm Pulse Curriculum and two AgriVision Podcast episodes.
- Working with the IT department to upgrade to a Tier 2 laptop, as my current laptop is struggling to run the video editing software.

## Area Extension Director

Catherine Emmanuelle | *Area Extension Director - Chippewa, Dunn, & Eau Claire Counties*

Happy Spring to you and yours. We are continuing forward with filling the Human Development and Relationships Educator position. The first round of applications are due on Monday, April 4. Our team will lead the internal screening of initial applicants, and then will invite 1 or 2 members of CRTCC to the final interviews, once we have that schedule ready.

We are getting ready to welcome new committee members after the Spring election. Our team has prepared a presentation to help orientate new committee members to get to know about Extension, our county-based partnership, and about the transformative education we get to do together. If you are new to a committee and/or want to reach out, here is my contact information: 715-450-0823 (can call or text) [catherine.emmanuelle@wisc.edu](mailto:catherine.emmanuelle@wisc.edu)

On a personal note, I had the good fortune to take my first Spring Break vacation since Covid began. It was a special time with just my daughter, who is in 11th grade. Being out of town for a bit, and connecting with loved ones is good for the soul! It's easier said than done sometimes, however I highly recommend it. Prioritize you and your loved ones, get some sunshine and fresh air too - it's some good medicine to help us find our resilience after a couple of very difficult years.