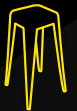
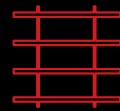
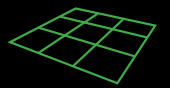
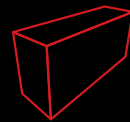




# EXPO BOOTH & UPGRADES FURNITURE HIRE



# Make it Yours

Elevate your brand presence with Exhibition & Display Services and transform your exhibition experience into an unforgettable showcase.

We collaborate with you to design distinctive and fully customised solutions for your upcoming show. We transform standard spaces into unique extensions of your business branding which stand out from the crowd, maximise impact and boost your sales and networking potential.

Contact us to talk about how our extensive furniture range and custom solutions can help make your next expo a success at [info@exhibitiondisplayservices.com.au](mailto:info@exhibitiondisplayservices.com.au) or by calling **07 3216 2512**.



## FABRIC PRINTS

Using our Silicon Edge graphics system you can brand your entire wall, booth or space with fabric prints. The banner goes into our reframe system and sits in front of the booth wall, is reuseable and is professionally installed by us, for you.

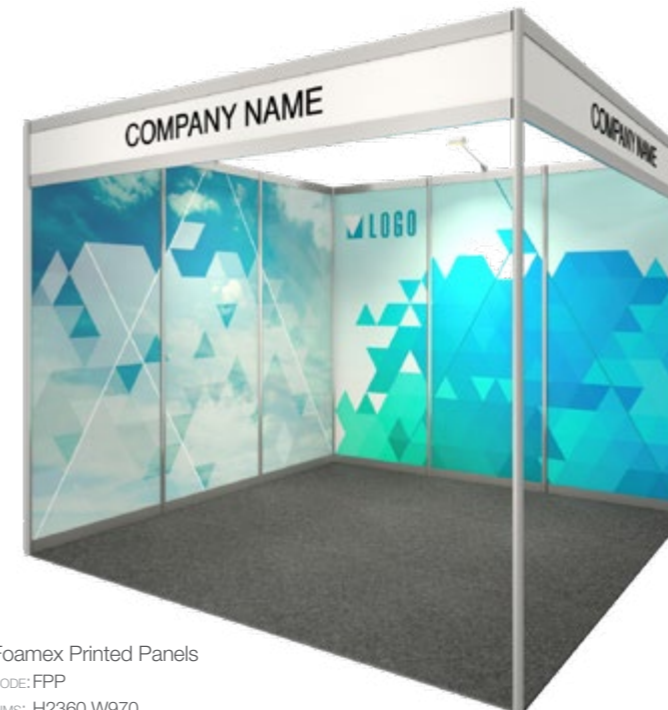


Printed Fabric Walls  
CODE: PFW2

**\$400** lineal metre

## PANEL PRINTS

Print directly to the booth walls on our 3mm foamex panel sheets. The panels come installed in your booth, ready to go.



Foamex Printed Panels  
CODE: FPP  
DIMS: H2360 W970

**\$280** per panel

## VELCRO WALL

Printed stretch Fabric with hook Velcro on rear that is easily installed to brand and cover existing exhibition walling.

The velcro wall comes installed and is reusable making it easy to DIY at additional expos.



CODE: PFW1  
DIMS: H2400 W3000

**\$300** lineal metre

All rates include GST. Rates are for duration of the exhibition/event unless specified. Delivery charges apply to all orders. Some products are available in Brisbane only. All measurements are in millimeters (mm).



## FURNITURE PACKAGES

Get your exhibition stand sorted in minutes with one of our furniture package deals. We make your life easy with a wide range of options to suit all budgets and requirements. Check our website for more info.



### STARTER 3x3

- 1x bar table
- 4x stools (any style)
- 1x lockable counter
- 1x zig-zag brochure rack

CODE: FPO1  
DIMS: W3000 D3000

**\$600**



### BASIC 3x3

- 1x bar table
- 4x stools (any style)
- 1x lockable counter
- 1x zig-zag brochure rack
- 1x 50" screen on a stand

CODE: FPO2  
DIMS: W3000 D3000

**\$1400**



### PREMIUM 3x2

- 1 x printed fabric wall (3m wide x 2.5m high)
- 1x 40" screen & stand
- 1x chrome zig-zag A4 brochure holder
- 1x black replica bar table
- 4x white replica bar stools.

CODE: PFB-1  
DIMS: W3000 D2000

**\$2100**



### PREMIUM 3x3 PRINTED OCTANORM

- 6 x 3mm Foamex board printed directly to the octanorm walling system
- 1x brochure counter (1m wide) with custom print
- 1x chrome zig-zag A4 brochure holder
- 1x black replica bar table
- 4x white replica bar stools
- 2x LED arm lights.

CODE: POB-1  
DIMS: W3000 D3000

**\$2200**



### REPLICA COUNTER PRINT TABLE COMBO

- Includes 1x rectangle brochure counter with custom printed counter front, 1x white replica bar table, 4x white replica bar stools and 1x chrome zigzag A4 brochure holder

CODE: RCPTC

**\$550**



### REPLICA COUNTER PRINT TABLE TV COMBO

- Includes 1x rectangle brochure counter with custom printed counter front, 1x white replica bar table, 4x white replica bar stools, 1x chrome zigzag A4 brochure holder and 1x 40" TV screen and stand

CODE: RCPTVC

**\$1050**



### BASIC BOOTH PACKAGE

- Includes 1x trestle table with black cover and 2x budget plastic chairs

CODE: BBP  
**\$70**



### MODERN BOOTH PACKAGE

- Includes 1x trestle table with white cover and 2x modern plastic chairs

CODE: MBP

**\$80**



### CAFÉ COMBO

- Includes 1x white square café table and 4x modern white plastic chairs

CODE: CCP

**\$110**



### RIBBON PACKAGE

- Includes 1x white square café table and 4x white ribbon chairs

CODE: RIBP

**\$150**



### RIO PACKAGE WHITE

- Includes 1x white coloured bar table and 3x white Rio stools

CODE: RIOWP

**\$150**



**PREMIUM BAR PACKAGE**

Includes 1x coloured bar table and 3x premium bar stools

CODE: PBP-W

**\$220**

AVAILABLE IN ● ○



**ALL BLACK PACKAGE**

Includes 1x all black bar table and 3x black premium bar stools

CODE: ABP

**\$240**

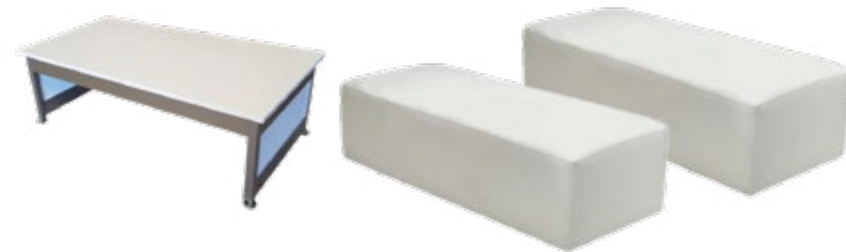


**ALL WHITE PACKAGE**

Includes 1x all white bar table and 3x white premium bar stools

CODE: AWP

**\$240**



**OTTOMAN COMBO**

Includes 1x café counter table and 2x ottoman benches

CODE: OWC

**\$265**

AVAILABLE IN ● ○



**REPLICA PACKAGE**

Includes 1x replica bar table and 4x replica bar stools

CODE: REPWP

**\$220**

AVAILABLE IN ● ○ ●



**PREMIUM REPLICA PACKAGE**

Includes 1x replica bar table and 4x premium bar stools

CODE: PRPW

**\$280**

AVAILABLE IN ● ○



**LOUNGE COMBO**

Includes 1x round side table and 2x leather single seat lounge chairs

CODE: LWC

**\$260**

AVAILABLE IN ● ○



**REPLICA EVENT PACKAGE**

Includes 1x event lycra table, 3x replica stools and 1x zigzag A4 brochure holder

CODE: REPW

**\$250**

AVAILABLE IN ● ○



**PREMIUM CURVED COUNTER COMBO**

Includes 1x curved 1.5m brochure counter, 2x premium bar stools and 1x zigzag A4 brochure holder

CODE: PCCCW

**\$360**

AVAILABLE IN ● ○







**PRINTED COUNTER PACKAGE 1.5m**

Includes 1x rectangle brochure counter 1.5m with custom printed counter front and 2x white premium bar stools

CODE: PCP1500

**\$440**



**PRINTED COUNTER PACKAGE 2m**

Includes 1x rectangle brochure counter 2m with custom printed counter front and 2x white premium bar stools

CODE: PCP2000

**\$550**



**PREMIUM COUNTER PRINT COMBO**

Includes 1x rectangle brochure counter 1m with custom printed counter front, 2x white premium bar stools and 1x chrome zigzag A4 brochure holder

CODE: PCPC

**\$400**



**PREMIUM COUNTER PRINT TABLE COMBO**

Includes 1x rectangle brochure counter 1m with custom printed counter front, 3x white premium bar stools and 1x white coloured bar table

CODE: PCPTC

**\$440**



**CURVED COUNTER PRINT TABLE COMBO**

Includes 1x curved brochure counter 1m with custom printed counter front, 3x white premium bar stools and 1x white coloured bar table

CODE: CCPTC

**\$460**



**LOCKABLE STORAGE COUNTERS**

Lockable door with one internal shelf. Lockable castor wheels.

White or black colour options available. Printed options available on request.

CODES: LSC-W / LSC-B

**\$210(1m) / \$315(2m)**



**VISUAL DISPLAYS**

40, 50 & 65" screens with optional DVD player, HDMI, USB or laptop playback. Includes floor stand.

CODES: 40" / 50" / 65"

**\$575 / \$630 / \$785**



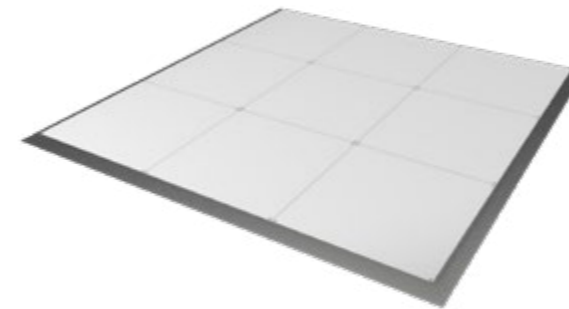
**CARPET TILES**

1m x 1m carpet tiles, come fully installed, clean and ready to use at any event.

CODE: CPT-RED / BLACK / CHARCOAL / BLUE

**\$11sqm**

AVAILABLE IN ●●●●



**RAISED FLOORING**

1m x 1m wooden tiles, joined together to create whatever size you require. 32mm raised satin white flooring including metallic edged ramping.

CODE: 32RF

**\$90sqm >= 20m<sup>2</sup>**

**\$80sqm < 20m<sup>2</sup>**

AVAILABLE IN ●○●●



**LED ARM LIGHT - EXPO BOOTH**

30 watt white LED arm light. Attach it to displays to illuminate your products or services. Price includes installation and electrical cables supplied by us.

CODE: LEDAL

**\$55**

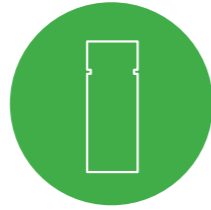


## FURNITURE & STAND HIRE

Something you can't find in our hire guide? Simply click on the icons below to go direct to our website, or email us at [info@exhibitiondisplayservices.com.au](mailto:info@exhibitiondisplayservices.com.au) and we will recommend some suitable options.



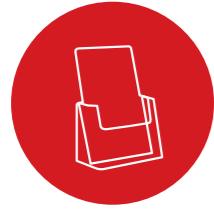
AUDIO VISUAL



BOLLARDS



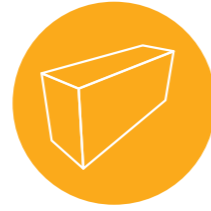
BOOTH UPGRADE DESIGNS



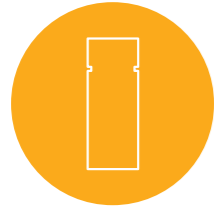
BROCHURE HOLDERS



CHAIRS



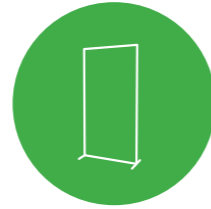
COUNTERS



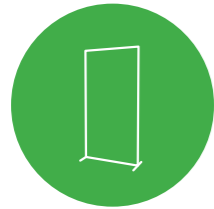
COVID-19 PROTECTION



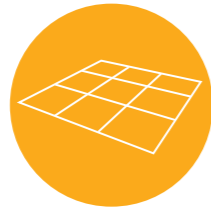
CUSTOM STAND DESIGNS



DISPLAY BOARDS



DISPLAY WALLS



FLOORING & CARPET HIRE



FURNITURE PACKAGES



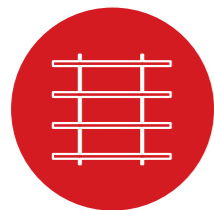
LIGHTING



MISC



PLINTHS



SHELVING



STOOLS



TABLES

PLEASE COMPLETE AND **EMAIL** TO [INFO@EXHIBITIONDISPLAYSERVICES.COM.AU](mailto:INFO@EXHIBITIONDISPLAYSERVICES.COM.AU)

COMPANY NAME: .....

CONTACT NAME: .....

ADDRESS: .....

PHONE: .....

EMAIL: .....

SHOW NAME: .....

LOCATION: .....

INSTALLATION DATE: ..... DISMANTLE DATE: .....

STAND NUMBER: ..... STAND SIZE: .....

ADDITIONAL REQUIREMENTS: *(please add specific requests to your order)*

.....

.....

.....

### ORDER DETAILS

All orders must be received within 7 days of the event installation. Additional service charges will be added to orders after this time period. Delivery charge includes installation/dismantle onto your stand. All orders are a minimum \$100+gst per order total. A standard delivery fee will be added to the order. For delivery prices outside of Brisbane please contact us for an estimate.

DESCRIPTION	CODE	COLOUR	QTY	PRICE
<b>Total (inc GST)</b>				

### PAYMENT DETAILS

Payment in full is required seven days prior to the event.

Visa  Mastercard  Amex (2% surcharge)

No responsibility will be taken for non-delivery of goods when payment has not been made in advance.

Card number:

Expiry Date:  /  Signed: \_\_\_\_\_

A Tax Invoice will be issued after the order has been confirmed and processed.

PLEASE COMPLETE AND **EMAIL** TO [INFO@EXHIBITIONDISPLAYSERVICES.COM.AU](mailto:info@exhibitiondisplayservices.com.au)

EVENT NAME / STAND NO:

.....

PHONE NUMBER:

.....

EMAIL ADDRESS:

.....

COMPANY NAME:

.....

**1. COMPLIMENTARY FASCIA SIGN**

Please write the name that you wish to exhibit on your stand fascia sign in the below fields (max 30 characters).

**2. REMOVE FASCIA BOARD & SIGN**

Please tick this box if you do not wish to have a fascia and company name sign installed.  
Charges apply if fascia is requested to be removed onsite.

**3. ADDITIONAL SIGNAGE**

Please email your graphics and details to [info@exhibitiondisplayservices.com.au](mailto:info@exhibitiondisplayservices.com.au) for a quote at least 14 days prior to the event.

**4. POWER REQUIREMENTS**

Please list your power requirements, or products you are using at the event that need power, along with the wattage too if known.

Power required

No power required

**5. ADDITIONAL FURNITURE REQUIREMENT**

Please complete the order form on the previous page and list anything extra below, along with any other info for the booth such as placement of lights, walls, furniture, etc.

<b>A</b>	<b>B</b>	<b>C</b>
<b>D</b>	<b>E</b>	<b>F</b>
<b>G</b>	<b>H</b>	<b>I</b>

ADDITIONAL DETAILS:

FRONT OF BOOTH



**exhibiti&n  
display  
SERVICES**

**PHONE:** 07 3216 2515

**EMAIL:** [info@exhibitiondisplayservices.com.au](mailto:info@exhibitiondisplayservices.com.au)

**ADDRESS:** 38 Matheson St, Virginia QLD 4014