

Sudoku Difficult No 15,561

		2				9		
					1		5	
9			2				3	4
		3				2		
				7			4	
	6						1	5
6			5			1	7	9
	8	1		4	2	5		
		5			6	4		

Fiendish No 15,562

Super fiendish No 15,563

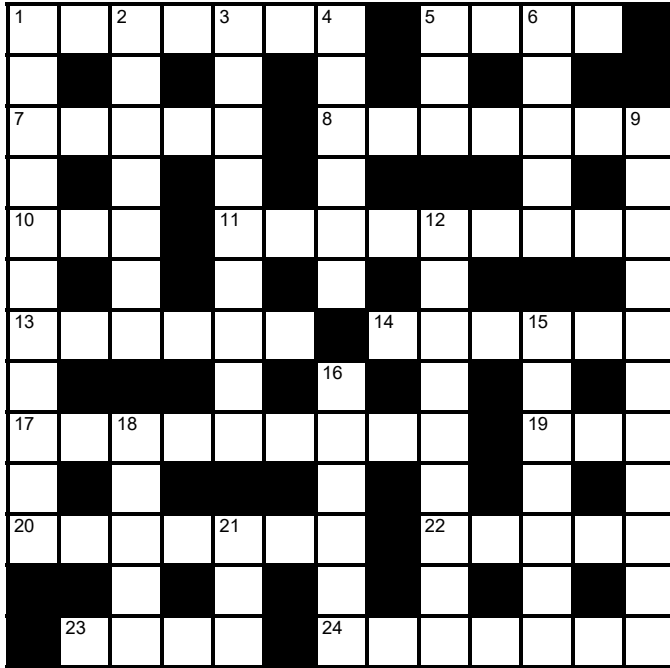
		7						
4					7	2	8	
	5				3		6	
6		1		4		3	2	
7		3			1			
8	4							
				7	4			6
			2			7		
			8	1	6		4	

			2	9				7	
	2						8	3	9
						8	4		1
	8		1		6			2	
2		5	4						
5	6	2						9	
							1		
1				7	5				

© PUZZLER MEDIA

Cluelines Stuck on Sudoku, Killer or KenKen? Call 0901 293 6263 before midnight to receive four clues for any of today's puzzles. Calls cost £1 plus your telephone company's network access charge. SP: Spoke, 0333 202 3390 (Mon-Fri 9am-5.30pm).

The Times Quick Cryptic No 2892 by Jimmy



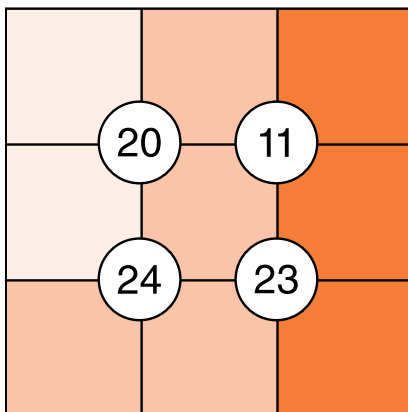
Across

- 1 Home for French people, with their pet and their drink (7)
- 5 Infrared screens not seen very often (4)
- 7 Perhaps nosy learner follows explorers of space (5)
- 8 Wonderful choice when ordering a pizza (7)
- 10 Marines protecting India's border (3)
- 11 Destructive compulsion from extremists in party leading country (9)
- 13 Scoundrel that is holding diamonds? This person holds clubs (6)
- 14 Darren failing in task (6)
- 17 Gin and tonic drunk by Oscar in disguise (9)
- 19 Drink and drive from here, by the sound of it? (3)
- 20 Refusal by wife to enter affluent city (7)
- 22 Start working with firm (5)
- 23 Leads of terriers you petted, exceptionally kind (4)
- 24 Individual cutting ripe bananas is an innovator (7)

Down

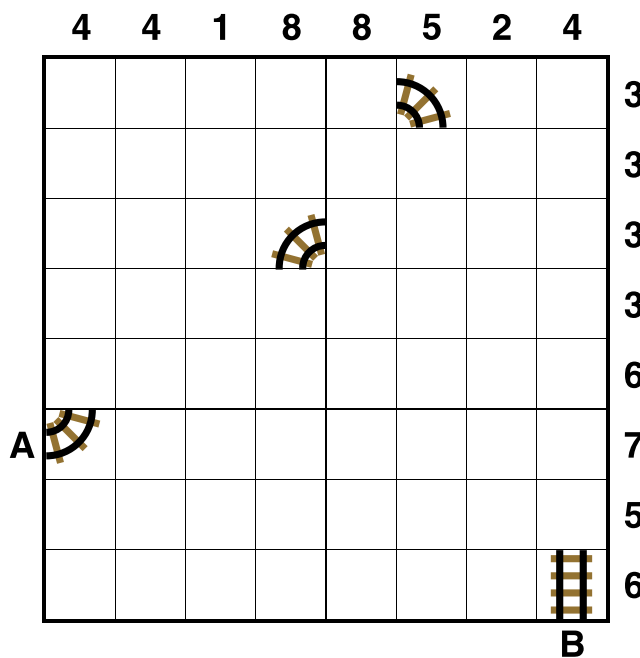
- 1 Tory pamphlet regularly disowns part of Labour (11)
- 2 Supposed fool gets extremely embarrassed about hesitant remark (7)
- 3 Concealing some YouTube clips ingeniously (9)
- 4 Parking during 180-degree spin in vehicle shows improvement (6)
- 5 Agent responds, overlooking false statements (3)
- 6 What monarchs do in inclement weather, we're told (5)
- 9 At sea, mad stranger's an expert on board (11)
- 12 Traveller lifted stuff on top of old Volkswagen (5,4)
- 15 Endless parties entertaining street performer (7)
- 16 Participant in chess game's blunder over pawn (6)
- 18 Bear's track behind vehicle (5)
- 21 Periodically ignored fierce fury (3)

Suko No 4332



Place the numbers 1 to 9 in the spaces so that the number in each circle is equal to the sum of the four surrounding spaces, and each colour total is correct

Train Tracks No 2456



Lay tracks to enable the train to travel from village A to village B. The numbers indicate how many sections of track go in each row and column. There are only straight sections and curved sections. The track cannot cross itself.

Word watch David Parfitt

Bouderie

- a Pouting, sulking
- b A black pudding
- c Bedroom accessories and furniture

Flags

- a Long feathers on the leg of a hawk
- b A lack of conditioning in horses
- c Linseed grains

Grübelsucht

- a A chocolate and apricot cake
- b An author of pulp fiction
- c Obsessive querying of everything

Poker Byron Jacobs

King Canute poker

Last week's article touched on the thorny topic of how to handle a mediocre hand. Hero called pre-flop with 8♣-8♠ then faced a bet on a flop of J♥-7♥-5♦. Hero is behind versus J-x and higher pairs but folding, for the moment, is out of the question. Villain could have more or less anything so Hero's eights make calling mandatory. The problems arise as the hand progresses and Hero continues to face bets. Must they take the hint and fold or must they call down to avoid being bluffed?

The short answer is they should do a bit of both, depending upon how the hand plays out. In Hero's shoes, the important thing to bear in mind is that it is impossible to play the hand perfectly. Sometimes you will fold when you have the better hand and sometimes you call down only to find you have been losing all along. And you don't need to beat yourself up when either scenario occurs because, along with the famous death and taxes, they are inevitable.

This is worth emphasising, as many players get stuck in their poker development because they are fixated about not making "mistakes". Any time they bluff and get called they are crestfallen. Any time they fold only to discover they had the winning hand, they are mortified. This is the King Canute approach to poker. When playing you will inevitably "go wrong" fairly often. You must

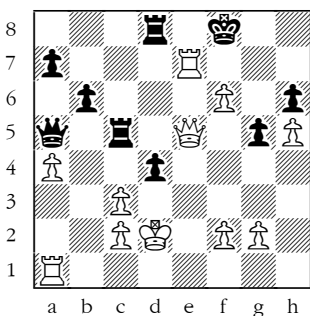
realise that when this happens, as long as you are acting in accordance with the information at hand, you are not making "mistakes".

Back to the cards. You call and the turn brings J♥-7♥-5♦-Q♥. Villain bets again, fairly big. The Q♥ is bad for you (heart flushes are possible and Q-x also beats you). You should fold. Even if you happen to be ahead you will frequently be outdrawn on the river.

What if the turn is J♥-7♥-5♦-2♣ and the same large bet appears? Unless Villain is a complete nit (super-tight, almost never bluffing) you really have to call. Almost every Villain would bet if they had two hearts, hoping to push you off just the kind of hand you have. So, you call and the river is J♥-7♥-5♦-2♣-9♦. Villain makes a further sizeable bet. What now?

This is not an easy decision but if poker were an easy game we'd all be brilliant at it. Members of the King Canute tendency are inclined to call. They reason, correctly, that the 2♣ and 9♦ probably didn't help Villain. So if Villain was bluffing on the flop they are still bluffing now and folding would be one of those dreaded "mistakes". However, unless you are in a high-stakes game, calling is probably wrong. Players at the low-medium stakes rarely bet all three streets as a bluff. Folding is probably best but do your best to exhibit a Zen-like response when an irritating Villain occasionally reveals a bluff to taunt you while they gather in the chips.

Winning Move



White to play.
This position is from Golubev-Gusev, Titled Tuesday, chess.com 2024.

Players learning chess are usually alerted to the fact that it is a very good idea to get the king safe at an early stage and subsequently keep it protected. Both players have demonstrated a cavalier disregard for this advice. In such situations the initiative is paramount. How does White crash through?

Codeword No 5431

5	12	8	9	13	21	20		11	8	10	2	14
20		10		23		8		13		8		19
24	20	10	3	24		9	14	12	20	12	10	14
3		3		13		9		14		25		9
24	3	22	8	22	13	3	24		18	2	14	22
20			13		7		17		14			
1	8	9	1	3	22		12	10	14	9	13	12
		14		24		1		3				3
12	16	8	22		9	14	8	7	8	4	14	24
8		10		26		22		10		24		12
9	16	13	6	3	1	14		8	9	14	24	8
14		22		4		3		1		14		11
9	16	20	1	14		9	14	15	2	10	5	14

A B C D E F G H I J K L M N O P Q R S T U V W X Y Z

1	2	3	4	5	6	7	8	9	10	11	12	13
14	15	16	17	18	19	20	21	22	23	24	25	26

Every letter in this crossword-style grid is represented by a number from 1 to 26. Each letter of the alphabet appears in the grid at least once. Use the letters already provided to work out the identity of further letters. Enter letters in the main grid and the smaller reference grid until all 26 letters of the alphabet have been accounted for. Proper nouns are excluded. *Yesterday's solution, right*

Cluelines Stuck on Codeword? To receive 4 random clues call 0901 293 6262 or text TIMECODE to 64343. Calls cost £1 plus your telephone company's network access charge. Texts cost £1 plus your standard network charge. For the full solution call 0905 757 0142. Calls cost £1 per minute plus your telephone company's network access charge. SP: Spoke, 0333 202 3390 (Mon-Fri, 9am-5.30pm).

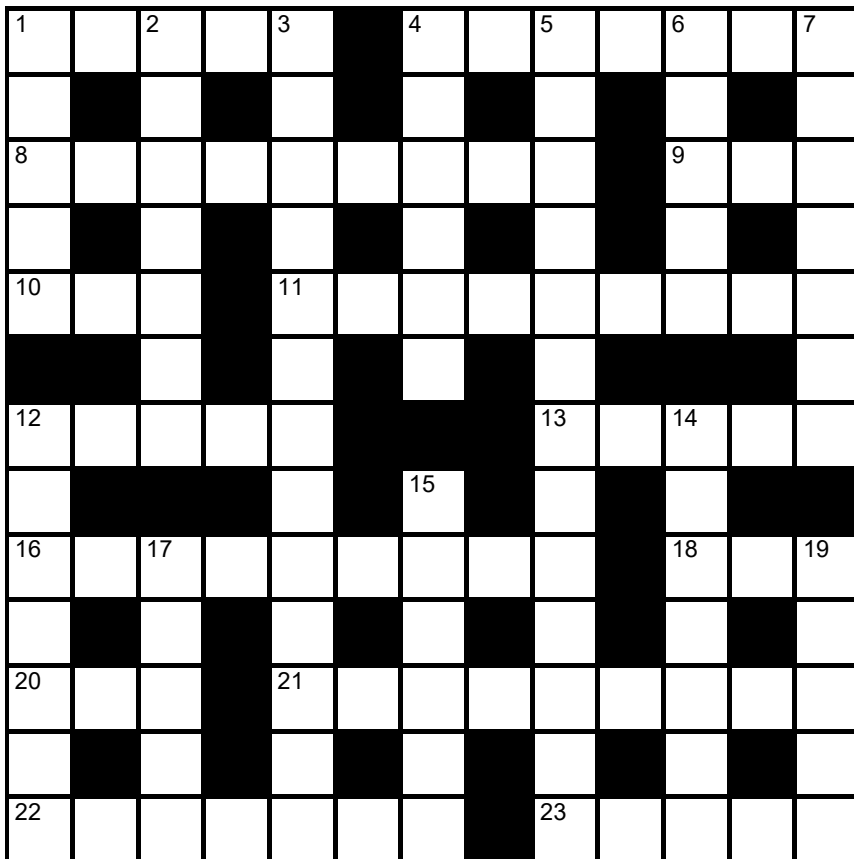
Lexica Easy No 7915

Hard No 7916

...	W	●	O	S	A	R	...	C	H	L	O	P	E	...
●							B	D						R
...						
A							F	N						T
...						
R							E	T						O
...						
N							X	W						D
...						
G							●	U						●
...						
E							K	Y						O
...						
...	D	O	R	V	V	W	...	L	O	F	I	N	I	...

Slide the letters either horizontally or vertically back into the grid to produce a completed crossword. Letters are allowed to slide over other letters

times2 Crossword No 9747



Across

- 1 Rock'n'roll or reggae, eg (5)
- 4 Performed a military gesture of respect (7)
- 8 Expressed with rapturous feeling (9)
- 9 Affirmative vote (3)
- 10 Rose fruit (3)
- 11 Fine facial hairs (9)
- 12 Coastal landform (5)

13 Wrath (5)

- 16 Items of correspondence often sent by tourists (9)
- 18 Exercise centre (3)
- 20 Dove's call (3)
- 21 Type of triangle (9)
- 22 Annual fiscal period (3,4)
- 23 Robust, vigorous (5)

Down

- 1 Vernal equinox month (5)
- 2 Chinese dog breed with loose wrinkly skin (4,3)
- 3 Economical (4-9)
- 4 Australian city (6)
- 5 Apathetic, careless (13)
- 6 Educate (5)
- 7 Unit for storing and displaying crockery (7)
- 12 Plagiarist, imitator (7)
- 14 Protective eyewear (7)
- 15 Leafy garden structure (6)
- 17 Native American people (5)
- 19 Untidy (5)

Solution to Crossword 9746

C	O	L	U	M	N	S	S	O	U	N	D
I	A	I	A	A	M	R					
T	O	W	E	R	V	O	L	U	B	L	E
E		A	A	O	I	D					
D	O	D	E	C	A	G	O	N	L	O	G
	A	L	E		I	E					
C	O	R	S	E	T	C	O	N	C	U	R
O	E		S	N	U						
C	O	D	B	O	T	T	O	M	S	U	P
K	E	U	A	F		E					
P	O	V	E	R	T	Y	F	O	V	E	A
I	I	N	E	E	A	K					
T	O	L	E	T	D	O	R	O	T	H	Y

Need help with today's puzzle? Call 0905 757 0143 to check the answers. Calls cost £1 per minute plus your telephone company's network access charge. SP: Spoke, 0333 202 3390 (Mon-Fri 9am-5.30pm).

KenKen Medium No 6423

2-	2÷		48×	4-	
	2-				10+
6+			11+		
2-	11+	9+		6+	
		5-		8+	
1-					3

All the digits 1 to 6 must appear in every row and column. In each thick-line "block", the target number in the top left-hand corner is calculated from the digits in all the cells in the block, using the operation indicated by the symbol.

© 2010 KENKEN PUZZLE & TIM MEXTOY, DIST. BY UFS, INC. WWW.KENKEN.COM

Futoshiki No 4971

<input type="text"/>	<	<input type="text"/>	<input type="text"/>	<input type="text"/>	<input type="text"/>
<input type="text"/>		<input type="text"/>	<	<input type="text"/>	3
<input type="text"/>	^	<input type="text"/>		<input type="text"/>	
<input type="text"/>		>	<input type="text"/>	<input type="text"/>	1
<input type="text"/>		<	<input type="text"/>	>	<input type="text"/>
			^		
<input type="text"/>		<input type="text"/>	<	<input type="text"/>	<input type="text"/>

Fill the blank squares so that every row and column contains each of the numbers 1 to 5 once only. The symbols between the squares indicate whether a number is larger (>) or smaller (<) than the number next to it.

Kakuro No 3930

	5	34		3	9	26	24		15	5
13			26					7		
3			34					24		
	15		8		10					
12	8			15		22			34	8
12			12				9		13	
6			7	14				13		
		21				24				
	5	13	8				5			
34					17	11		15		7
13			14					4		

Fill the grid using the numbers 1 to 9 only. The numbers in each horizontal or vertical run of white squares add up to the total in the triangle to its left or above it. The same number may occur more than once in a row or column, but not within the same run of white squares.

© PUZZLER MEDIA

Quintagram®

Solve all five cryptic clues using each letter underneath once only

- 1 Year after US prosecutor serves time (3)
_ _ _
- 2 Extremely short book to write, say (4)
_ _ _ _
- 3 Bad feeling held by Afghan governors (8)
_ _ _ _ _ _ _ _
- 4 Earmark time in holiday resort? (3,5)
_ _ _ _ _ _
- 5 Rampaging men-at-arms displaying military equipment (9)
_ _ _ _ _ _ _ _ _

A	A	A	A	A	B	D	D
E	E	E	E	E	G	H	I
M	M	N	N	O	R	R	R
S	S	S	T	T	V	V	Y

Brain Trainer

EASY	41	x 2	- 8	1/2 OF IT	+ 5	1/3 OF IT	- 5	SQUARE IT	- 9	÷ 3	ANSWER	
MEDIUM	137	x 5	- 76	2/3 OF IT	+ 58	+1/2 OF IT	- 44	75% OF IT	- 75	+1/2 OF IT	ANSWER	
HARDER	254	+ 698	+1/2 OF IT	+ 543	x 3	+ 777	80% OF IT	11/12 OF IT	+ 898	75% OF IT	ANSWER	

Polygon



From these letters, make words of **four** or more letters, always including the central letter. Answers must be in the *Concise Oxford Dictionary*, excluding capitalised words, plurals, conjugated verbs (past tense etc), adverbs ending in LY, comparatives and superlatives. **How you rate** 11 words, average; 15, good; 21, very good; 27, excellent

Yesterday's answers

meno, mento, mentor, meson, metro, **monster**, monte, more, morn, mort, most, mot, mote, nome, norm, omen, rem, sermon, som, some, stem, storm, term, tom, tome

Cell Blocks No 5314

		4			
				4	3
			2		
			3		7
7			2		
	7				3
		4		3	

Divide the grid into square or rectangular blocks, each containing one digit only. Every block must contain the number of cells indicated by the digit inside it.

Set Square No 3933

	x	-	= 39
x	□	x	□
	+	x	9 = 117
+	□	+	□
	+	4	x
=	=	=	= 6
50	39	11	

Enter each of the numbers from 1 to 9 in the grid, so that the six sums work. We've placed two numbers to get you started. Each sum should be calculated left to right or top to bottom.

Please note, BODMAS does not apply

Killer Tricky No 9900

18	9	22		3	10	19	9	
			27				12	
		12			20			9
5			10			8	22	
22								
	9	17	14		13		19	
10				23	11			
					13			
16		9				14		

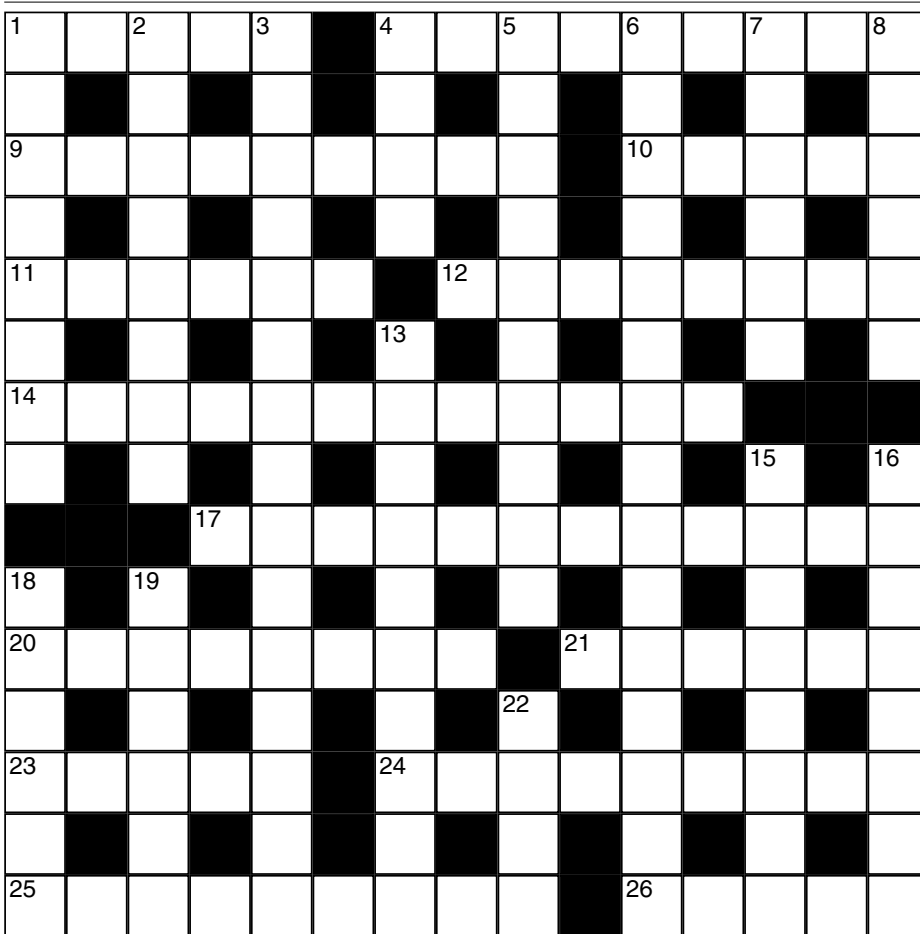
Killer Deadly No 9901

9	17		9		19			11
			19	17				10
21				17	7			12
		12						
9			23	10	21			13
20	7							22
	4	18			12			
				3		11		15
8		20				9		

As with standard Sudoku, fill the grid so that every column, every row and every 3x3 box contains the digits 1 to 9. Each set of cells joined by dotted lines must add up to the target number in its top-left corner. Within each set of cells joined by dotted lines, a digit cannot be repeated.

Cluelines Stuck on Sudoku, Killer or KenKen? Call 0901 293 6263 before midnight to receive four clues for any of today's puzzles. Calls cost £1 plus your telephone company's network access charge. SP: Spoke, 0333 202 3390 (Mon-Fri 9am-5.30pm).

Times Crossword 29,133



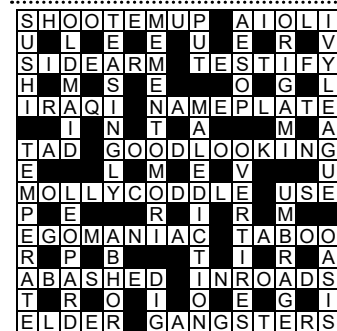
ACROSS

- 1 Jar filled with a colourful liquid (5)
- 4 Out, local female in hat (9)
- 9 Fold last of pages in dictionary inside comic (5,4)
- 10 Monster secure, it's reported (5)
- 11 That man behind alto, when sozzled, can't stand (6)
- 12 Recess measures one metre exactly at the opening, caver finally going in (4,4)
- 14 25 across, or what — does that suggest? (5,1,6)
- 17 Humiliate further and give it some welly? (3,3,4,2)
- 20 Fast runners, crooks did you say? (8)
- 21 Weather in Chartres is terrible (6)
- 23 Stand firmly against, do (5)
- 24 Unknown chest found in Rhodes, unexpectedly (4,5)
- 25 Blow a gasket while parked alongside West Indian housing block (2,7)
- 26 Equestrian qualification (5)

DOWN

- 1 Steal old currency tucked inside thin coat (8)
- 2 I hear about two notes in worship (8)
- 3 Queen hit, *Don't Stop Me Now* (3,4,4,2,2)
- 4 Lap up in game (4)
- 5 Villain's broken rank to stop one going up and down (4,6)
- 6 That legion slaughtered, number totally exposed (2,3,10)
- 7 Wind or gas in thermal? (3,3)
- 8 One refusing a measure of hose (6)
- 13 Alert operative (8,2)
- 15 Customs finally put foot down when character smuggled in object on domestic flight? (5,3)
- 16 King Charlie not prepared to carry key climbing gear (8)
- 18 Diamonds get cooler (3,3)
- 19 Area for planting a bulb regularly lacking soil (6)
- 22 Olympian shows courage having lost lead (4)

Yesterday's solution 29,132



Check today's answers by ringing 0905 757 0141 by midnight. Calls cost £1 per minute plus your telephone company's network access charge. SP: Spoke 0333 202 3390.

Solutions

Quick Cryptic 2891

D	I	S	C	O	V	E	R	E	D		
D	A	E	E	I	P						
T	E	A	S	E	T	G	O	V	E	R	N
A	S	I	A	I							
A	S	I	A	A	B	S	E	N	T	E	D
	D	N	T		S						
N	E	W	E	S	T	R	E	M	O	T	E
X	I	A	I								
S	C	R	A	P	P	E	R	D	U	C	K
I	T	A		W	H						
S	T	R	E	S		P	R	E	F	A	B
E	U	T		R	S	I					
	P	R	O	M	O	N	T	O	R	Y	

Codeword 5430

S	T	R	A	Y	W	O	R	S	T	
D	E	D	L	F	L	S				
E	L	M	D	W	A	R	F	E	G	O
S	P		V							
C	O	O	T	B	A	P	S	P	I	T
R										
O	W	L		Y	E	T				H
I	B	E	X	I	L	O	N	U	S	
P										
T	A	R	N	S	I	N	E	S	P	Y
I	O									
O	L	D		J	E	T	T	I	N	N
R	E	A		O	O	Z				
D	O	D	G	Y	Q	U	E	E	N	

Kakuro 3929

1	3	8		8	2	3	1		
1	3	2	7		9	8	6	2	7
2	9		9	3			8	6	9
		2	5	1			3	9	
9	3	4		7	6	1		1	2
7	2		1	5	2		4	3	9
		8	3		1	7	3		
6	8	9			3	4		2	7
2	1	4	3	7		6	8	7	9
	2	1	4	9		5	9	8	

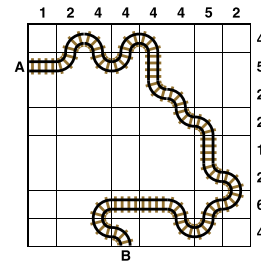
Sudoku 15,558

3	1	2	9	8	4	5	7	6
8	5	4	7	1	6	9	3	2
7	6	9	3	5	2	8	1	4
4	3	1	6	2	9	7	8	5
2	7	5	8	4	1	3	6	9
9	8	6	5	7	3	4	2	1
5	4	3	2	6	8	1	9	7
1	2	8	4	9	7	6	5	3
6	9	7	1	3	5	2	4	8

Tetonor 537

16	300	30	55
4 + 12	25 x 12	13 + 17	5 + 50
250	26	221	48
5 x 50	16 + 10	13 x 17	4 x 12
37	160	20	19
12 + 25	10 x 16	19 + 1	19 x 1
76	35	96	219
3 + 73	3 + 32	3 x 32	3 x 73

Train Tracks 2455



Sudoku 15,559

3	9	2	1	5	7	6	4	8
6	1	4	8	9	2	7	3	5
5	8	7	4	6	3	1	9	2
7	2	6	9	4	5	3	8	1
1	4	9	6	3	8	2	5	7
8	3	5	2	7	1	9	6	4
9	5	8	7	2	6	4	1	3
2	6	3	5	1	4	8	7	9
4	7	1	3	8	9	5	2	6

Cell Blocks 5313

2			3	3	
2		8			5
2			8		
	3				
		2	2	2	2
3					2

Set Square 3932

8	x	7	x	5
÷		x		x
1	+	4	+	6
+		-		+
3	x	2	+	9

Lexica 7913

C	O	P	Y		
A		O		S	
B	O	W	I	N	G
		E		A	
F	A	R		C	
				K	

Sudoku 15,560

1	2	9	7	5	6	4	3	8
8	4	7	9	3	2	1	6	5
3	6	5	8	1	4	2	9	7
4	9	6	5	2	3	7	8	1
5	8	3	4	7	1	6	2	9
2	7	1	6	9	8	5	4	3
7	5	4	2	8	9	3	1	6
9	1	2	3	6	5	8	7	4
6	3	8	1	4	7	9	5	2

Futoshiki 4970

5	2	3	4	1		
	^					
1	3	5	2	4		
4	5	>	2	>	1	3
3	1	4	5	2		
2	4	1	<	3	5	

KenKen 6422

75x	2-	15+	2:			
5	3	1	6	4	2	
6+	2	5	3	4	6	1
4-	3	2	6	5	1	4
14+	1	6	4	2	3	5
24x	6	4	5	1	2	3
10x	4	1	2	3	5	6
3:						
1-						
1-						

Lexica 7914

	S		Q		
U	N	F	U	R	L
O			I		I
B	U	R	N		C
T			C		K
			B	E	G

Today's solutions

Killer 9898

3	9	4	7	1	5	8	2	6
7	2	1	3	8	6	5	9	4
8	6	5	2	4	9	3	7	1
9	3	2	1	6	4	7	5	8
1	8	7	5	9	2	4	6	3
4	5	6	8	3	7	2	1	9
2	4	8	6	7	1	9	3	5
5	1	9	4	2	3	6	8	7
6	7	3	9	5	8	1	4	2

Killer 9899

1	4	8	5	9	6	2	3	7
9	5	2	7	3	1	8	4	6
7	3	6	2	8	4	5	9	1
5	2	4	3	1	9	7	6	8
3	1	7	6	2	8	4	5	9
6	8	9	4	5	7	3	1	2
8	7	5	1	6	3	9	2	4
4	6	3	9	7	2	1	8	5
2	9	1	8	4	5	6	7	3

Cryptic Quintagram

- 1 Day
- 2 Verb
- 3 Hangover
- 4 Set aside
- 5 Armaments

Suko 4332

7	2	3
20	11	
6	5	1
24	23	
4	9	8

Brain Trainer

- Easy 24
- Medium 621
- Harder 4353

Word watch

- Bouderie** (a) Pouting, sulking (*Chambers*)
- Flags** (a) Long feathers on the leg of a hawk (*Collins*)
- Grübelstucht** (c) Obsessive querying of everything (*OED*)

Chess – Winning Move

- 1 Rf7+! Kg8 (1 ... Kxf7 2 Qe7+ Kg8 3 Qg7 mate) 2 Rg7+ Kh8 3 Rh7+! (White insists on giving up the rook) 3 ... Kg8 (Black again declines as 3 ... Kxh7 4 Qe7+ mates but refusing the bait doesn't help) 4 Qe6+! (now it has to be taken) 4 ... Kxh7 5 Qf7+ Kh8 6 Qg7 mate

Sudoku easy

1					
	7			5	1
	9	3			4
1	4		8		9
8		3	5		
5	7		9		3
					8
2		4		8	
8	3			9	
		1	2		
					7

Killer gentle

Fill the grid so that every column, every row and every 3x3 box contains the digits 1 to 9. Each set of cells joined by dotted lines must add up to the target number in its top-left corner. Within each set of cells joined by dotted lines, a digit cannot be repeated.

11		3		19			16	5
17			10		4		6	
11	5			16	9	7		13
	13	7					14	
				17				6
18	17			8		13		3
	14			13		5		17
	6	14	13		16			22

Suko

14	26	
14	20	

8	24	13
---	----	----

Place the numbers 1 to 9 in the spaces so that the number in each circle is equal to the sum of the four surrounding spaces, and each colour total is correct

Codeword

Every letter in the crossword-style grid, right, is represented by a number from 1 to 26. Each letter of the alphabet appears in the grid at least once. Use the letters already provided to work out the identity of further letters. Enter letters in the main grid and the smaller reference grid until all 26 letters of the alphabet have been accounted for. Proper nouns are excluded.

	23	3	6	8	7	3	13		4	5	21	6
17		1				18		12		13		3
4	1	8	17	1	15	3		1	14	G	3	20
20		3		12		9		20		25		8
6	7	20	21	6		5	7	19	21	3	24	
21				4		8		21		17		5
9	1	A	20	14	26	3		10	3	6	8	3
3		3		21		17		8				4
	17	13	21	8	17	2		7	17	7	20	14
1		11		3		3		20		20		13
14	13	4	22	26		13	3	14	1	8	8	1
4		21		16		21				3		9
14	1	6	2		4	12	B	6	17	21	13	3

X Ø C D E F Ø H I J K L M N O P Q R S T U V W X Y Z

1	2	3	4	5	6	7	8	9	10	11	12	13
A											B	
14	G	15	16	17	18	19	20	21	22	23	24	25
												26

Mini Sudoku

Fill in the grid so that every column, every row and every 3x2 box contains the digits 1 to 6

	5			4	
		5	3		
6					4
3		1	4		5
		2	1		

Solutions in tomorrow's Times2

THE  TIMES

MindGames Wednesday January 22 2025
Brain boost puzzles

Yesterday's solutions

SAMURAI

4	3	7	6	2	8	1	9	5	7	6	4	9	3	5	8	2	1
1	9	8	4	7	5	2	3	6	1	3	9	2	8	7	5	6	4
5	6	2	9	1	3	4	7	8	5	8	2	4	6	1	9	7	3
6	4	3	1	5	7	8	2	9	8	1	7	3	2	9	4	5	6
8	1	5	2	9	4	7	6	3	2	9	6	5	7	4	3	1	8
7	2	9	3	8	6	5	1	4	4	5	3	8	1	6	7	9	2
3	8	6	7	4	2	9	5	1	6	2	4	3	7	8	1	9	2
9	7	4	5	3	1	6	8	2	5	7	3	9	4	1	6	5	8
2	5	1	8	6	9	3	4	7	9	1	8	6	2	5	7	4	3
						7	6	3	8	9	5	2	1	4			
						1	9	4	7	3	2	8	5	6			
						8	2	5	1	4	6	7	9	3			
2	3	1	8	6	5	4	7	9	3	8	1	5	6	2	4	1	3
9	6	4	3	2	7	5	1	8	2	6	7	4	3	9	2	7	8
7	8	5	1	4	9	2	3	6	4	5	9	1	8	7	5	6	9
6	2	3	4	5	1	8	9	7				8	7	5	3	9	4
1	4	9	7	3	8	6	2	5				9	4	6	8	2	1
8	5	7	6	9	2	1	4	3				2	1	3	7	5	6
4	9	2	5	8	3	7	6	1				3	5	1	9	4	7
3	1	8	2	7	6	9	5	4				7	2	4	6	8	5
5	7	6	9	1	4	3	8	2				6	9	8	1	3	2

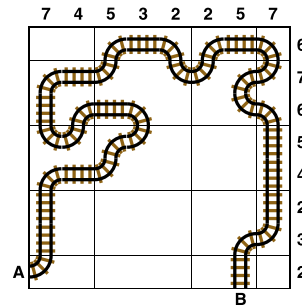
SUKO

5	7	6
29	23	
9	8	2
3	1	4

MINI SUDOKU

3	2	6	5	1	4
1	4	5	6	2	3
6	1	2	4	3	5
5	3	4	2	6	1
4	6	1	3	5	2
2	5	3	1	4	6

TRAIN TRACKS



FUTOSHIKI

1	4	3	5	2
	∨			
2	<	3	4	1
			∧	
5	1	2	<	3
3	2	5	4	1
				∧
4	<	5	1	<
				3

SUDOKU

5	2	7	4	8	6	9	3	1
9	3	4	1	7	2	8	6	5
8	1	6	5	9	3	4	2	7
7	9	3	2	5	1	6	8	4
4	8	5	3	6	7	1	9	2
1	6	2	8	4	9	5	7	3
2	7	8	9	1	4	3	5	6
6	5	1	7	3	8	2	4	9
3	4	9	6	2	5	7	1	8

KILLER

7	5	8	6	3	2	1	9	4
2	6	1	9	4	7	8	5	3
3	9	4	1	8	5	6	2	7
4	8	9	2	5	1	3	7	6
6	1	2	3	7	9	5	4	8
5	3	7	8	6	4	9	1	2
1	4	6	7	9	8	2	3	5
8	2	5	4	1	3	7	6	9
9	7	3	5	2	6	4	8	1

CODEWORD

F	U	E	L	I	N	V	I	T	I	N	G
R	Q	S	I	N	N	A					
A	Q	A	T	I	C	P	O	W	E	R	
C	A	U	E	U	A	B					
T	U	L	I	P	S	U	T	U	R	E	
U	O						D	N			
R	E	W	O	R	D	P	L	A	S	M	A
E	O					P	O				T
F	R	A	C	A	S	C	O	R	G	I	
J	K	O				Y	A	A	O		
A	F	T	E	R	C	I	T	I	Z	E	N
P	O	A				H	E	O	A		
E	X	P	E	L	L	E	D	O	R	A	L