

DATA SHEET FOR STRUCTURAL PROFILES



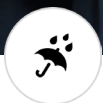
Certified quality



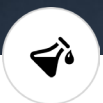
Low weight



High strength



No corrosion



Chemical resistance



Electrical insulation



Easy to machine



Little or no maintenance

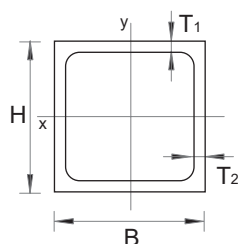
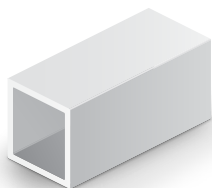


Sustainable manufacture



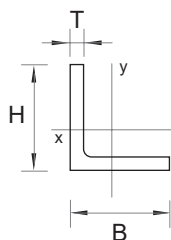
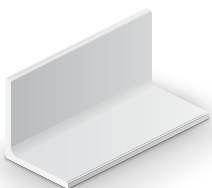
Thermal insulation

Square tubes



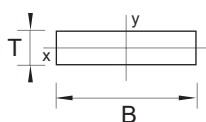
H	B	T1/T2	g	A	Ixx	E0o	Stock item
mm	mm	mm	g/m	$\times 10^3 \text{ mm}^2$	$\times 10^6 \text{ mm}^4$	GPa	
50	50	5/5	1.630	0,90	0,31	28	•
60	60	5/5	2.000	1,11	0,57	28	•
75	75	6/6	2.999	1,67	1,33	28	
75	75	8/8	3.870	2,15	1,63	28	
80	60	5/5	2.360	1,31	1,15	28	
100	60	8/8	4.180	2,31	2,84	28	
100	100	6/6	4.090	2,27	3,36	28	
100	100	8/8	5.320	2,96	4,21	28	
114	114	6/6	4.684	2,60	5,08	28	
114	114	8/8	6.124	3,40	6,41	28	
114	114	10/10	7.506	4,17	7,59	30	
120	60	5/5	3.060	1,70	3,09	28	
120	120	6/6	4.940	2,75	5,98	28	
120	120	8/8	6.480	3,60	7,57	28	
132	132	7/7	6.370	3,54	9,62	28	
132	132	9,5/9,5	8.690	4,73	11,95	28	
140	60	6/5	3.650	2,00	5,08	28	
160	160	8/8	8.850	4,92	19,10	28	
200	200	10/10	13.840	7,69	46,50	30	
240	240	12/12	20.000	11,00	96,40	31	

Angle profiles

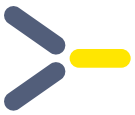


H	B	T	g	A	Ixx	E0o	Stock item
mm	mm	mm	g/m	$\times 10^3 \text{ mm}^2$	$\times 10^6 \text{ mm}^4$	GPa	
50	50	6	1.026	0,57	0,13	28	•
50	50	8	1.350	0,75	0,17	28	
75	75	6	1.555	0,87	0,47	28	
75	75	8	2.045	1,15	0,60	28	•
80	80	8	2.189	1,23	0,74	28	
100	100	8	2.765	1,55	1,49	28	
100	100	10	3.420	1,91	1,80	30	•
100	100	12	4.061	2,27	2,10	31	
150	100	8	3.500	1,95	4,57	28	
150	100	10	4.320	2,41	5,59	30	
150	100	12	5.141	2,87	6,57	31	
150	150	8	4.205	2,35	5,21	28	
150	150	10	5.220	2,94	6,38	30	
150	150	12	6.221	3,47	7,51	31	•

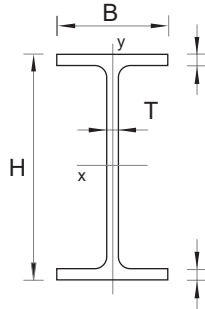
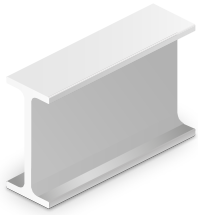
Strips



B	T	g	A	Ixx	E0o	Stock item
mm	mm	g/m	$\times 10^3 \text{ mm}^2$	$\times 10^6 \text{ mm}^4$	GPa	
30	6	320	0,18	0,54	28	
50	6	540	0,30	0,90	28	
50	10	900	0,50	4,20	30	
100	6	1.080	0,60	1,80	28	
100	8	1.444	0,80	4,30	28	
100	10	1.800	1,00	8,30	30	•
500	6	4.400	3,00	9,00	28	
500	10	9.000	5,00	41,70	30	•

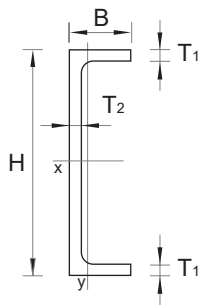
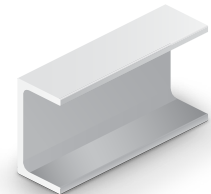


I-profiles



H	B	T	g	A	I _{xx}	E _{0o}	Stock item
mm	mm	mm	g/m	x 10 ³ mm ²	x 10 ⁶ mm ⁴	GPa	
120	60	6	2.550	1,42	3,10	28	•
160	80	8	4.480	2,49	9,66	28	•
200	100	10	6.990	3,89	23,60	30	•
240	120	12	10.100	5,60	48,90	31	•
300	150	15	15.700	8,74	119,00	31	
360	180	18	22.700	12,60	248,00	31	

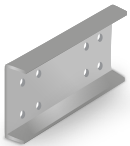
U-profiles



H	B	T1/T2	g	A	I _{xx}	E _{0o}	Stock item
mm	mm	mm	g/m	x 10 ³ mm ²	x 10 ⁶ mm ⁴	GPa	
70	30	5/5	1.08	0,60	0,40	28	
85	31	5/5	1.230	0,68	0,66	28	
100	30	6/6	1.611	0,90	1,15	23	•
100	50	6/6	2.043	1,14	1,68	23	
114	41	6/6	2.000	1,11	1,98	23	
120	50	6/6	2.290	1,27	2,65	23	•
150	40	6/6	2.394	1,33	3,90	23	
160	48	8/8	3.510	1,95	6,57	28	•
200	60	10/10	5.480	3,04	16,00	30	•
200	80	8/8	5.460	2,760	16,02	28	
240	72	8/8	5.350	2,97	23,30	28	•
240	72	12/12	7.890	4,38	33,20	31	
300	90	15/15	12.300	6,85	81,20	31	•
360	108	18/18	17.800	9,86	168,00	31	•

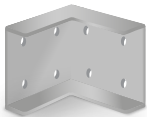
Brackets for I- and U-profiles

0°



For profile height	H	Amount of holes
mm	mm	-
120	108	8
160	144	8
200	180	8
240	216	12
300	270	12
360	324	12

90°



For profile height	H	Amount of holes
mm	mm	-
120	108	8
160	144	8
200	180	8
240	216	12
300	270	12
360	324	12

NB two stock categories:

1. Standard stock profiles which you will always find on stock.
2. Profiles manufactured to orders (minimum volumes apply). However, these are popular geometries and might also be on stock. Please, contact us for availability on specific profile.