

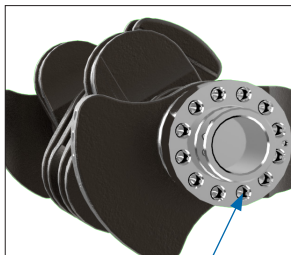


STAY CURRENT

WORLD TESTED. PERFORMANCE PROVEN.

Featured Item: Detroit Diesel DD15 Crankshaft

PAI's Crankshafts are thoroughly tested to ensure optimum fit and performance on specific vehicle applications. This replacement Crankshaft fits Detroit Diesel DD15 applications.



M16x1.5 (12)



M16x1.5 (8)

**Detroit Diesel DD15
Engine Application**

**Direct Replacement for
Detroit A4720310701**

**Material: Forged Steel,
Induction Hardening**

Four Counterweight Design

**Ensures Optimum Fit
and Performance**

**Dynamically
Balanced, Magnetic
Particle Inspection**

2-Year Warranty

PAI Reference	OEM Reference
671655	DDC A4720310701
Material: Forged Steel, Induction Hardening	
Arrangement: 4 Counterweight Design, 6 Oil Channels	
Journal Diameter (Qty): Rod - 3.937in (6) Main - 4.724in (7)	
Description: Crankshaft	
Application: Detroit Diesel DD15	
Additional OE#: A4720310301 A4720310201 A4720310001	

ORDER NOW

TWO YEAR WARRANTY Unlimited Mileage 



Call 800-654-3721 or visit www.paiindustries.com for additional Engine Components.

Use of other manufacturers' names, part numbers or trademarks are for informational and identification purposes only.