



12 DAYS OF CHRISTMAS SPECIAL!

Let's finish the year with something new!



Grab-and-Go Open Refrigerated Floor Self-Serve Display Case

	36"	48"	60"	72"
Item	48377	48378	48379	48380
Model	RE-CN-0900	RE-CN-1200	RE-CN-1500	RE-CN-1800
Capacity	19.77 cu.ft./560L	26.83 cu.ft./760 L	33.9 cu.ft./960 L	40.96 cu.ft./1160 L
Power	1320 W	1600 W	1880 W	2050 W
Electrical	110-120V / 60Hz / 1	110-120V / 60Hz / 1	220V / 60Hz / 1	220V / 60Hz / 1
Weight	396.8 lbs.	486.1 lbs.	555.6 lbs.	646 lbs.
Dimensions	28.7" x 29.1" x 79.9"	48.4" x 29.1" x 79.9"	60.2" x 29.1" x 79.9"	72" x 29.1" x 79.9"



Grab-and-Go Open Refrigerated Floor Self-Serve Display Case

	36"	48"	72"
Item	48265	48266	48269
Model	RS-CN-0530-B	RS-CN-0700-B	RS-CN-1050-B
Capacity	18.7 cu.ft./530 L	24.7 cu.ft./700 L	37.1 cu.ft./1050 L
Power	1340 W	2650 W	1960 W
Electrical	110-120V / 60Hz / 1	220V / 60Hz / 1	220V / 60Hz / 1
Weight	306.4 lbs.	418.9 lbs.	533.5 lbs.
Dimensions	36" x 30.1" x 81.5"	48" x 30.1" x 81.5"	72" x 30.1" x 81.5"



Grab-and-Go Open Refrigerated Floor Self-Serve Display Case



	48" - Stainless Steel	48" - Black
Item	48273	48272
Model	RS-CN-0490-L	RS-CN-0490
Capacity	15.04 cu.ft./426 L	15.04 cu.ft./426 L
Power	1300 W	1300 W
Electrical	110-120V / 60Hz / 1Ph	110-120V / 60Hz / 1Ph
Weight	370 lbs.	356 lbs.
Dimensions	47" x 32" x 57"	47.4" x 33.3" x 59"



Refrigerated Floor Showcase with Curved Glass

	36"	48"
Item	48351	48352
Model	RS-CN-0460	RS-CN-0660
Capacity	16.49 cu.ft./ 467 L	22.35 cu.ft./633 L
Power	590 W	680 W
Electrical	110-120V / 60Hz / 1Ph	110-120V / 60Hz / 1Ph
Weight	366 lbs.	454.2 lbs.
Dimensions	36.2" x 32.6" x 56.7"	48" x 32.6" x 56.7"



FOR MORE INFORMATION
PLEASE VISIT
WWW.OMCAN.COM
OR GIVE US A CALL
1.800.465.0234



Limited quantities available. E&OE. Valid to Authorized Omcans Dealers only. F.O.B. Mississauga (Ontario), Santa Fe Springs (California). Special prices on this flyer may not be included to any special freight program. ***NOT APPLICABLE TO PRIOR PURCHASE.*** **USD PRICES MAY BE SUBJECT TO INCREASE ON SOME ITEMS DUE TO NEW AND FUTURE TARIFF TAXES POLICIES***



OFFER ENDS:
December 06-23, 2024. E&OE.
Contact your Account Manager for more info



12 DAYS OF CHRISTMAS SPECIAL!

Let's finish the year with something new!



Black Display Freezer with Glass Door

Item Model Capacity Power Electrical Weight Dimensions	27" 1 Glass Door 51029 FR-CN-0012-HC-BK 12.3 cu. ft. (368 L) 510W 110-120V / 60Hz / 1Ph 348 lbs 27.2" x 26.2" x 84.5"	31" 2 Glass Door 51030 FR-CN-0790-HC-BK 23 cu. ft. (648 L) 732W 110-120V / 60Hz / 1Ph 408 lbs 31" x 33.3" x 85.5"	49" 2 Glass Door 51031 FR-CN-1250-HC-BK 29 cu. ft. (821 L) 876W 110-120V / 60Hz / 1Ph 463 lbs 49.21" x 26.2" x 84.5"
	53" 2 Glass Door 51075 FR-CN-0045-HC-BK 45 cu. ft. (1270 L) 1,000W 110-120V / 60Hz / 1Ph 507 lbs 53.2" x 32" x 83.5"	80" 3 Glass Door 51087 FR-CN-0052-HC-BK 52.3 cu. ft. (1650 L) 1,600W 110-120V / 60Hz / 1Ph 615 lbs 79.5" x 30.5" x 84.5"	



Stainless Steel 2-Door Glass Floor Display Freezer

Item Model Capacity Power Electrical Weight Dimensions	48376 FR-CN-0600-2 21.18 cu. ft. (600 L) 1500W 110V / 60Hz 530 lbs 41" x 27" x 79"	



Countertop Square Glass Refrigerated Display

Item Model Capacity Power Electrical Weight Dimensions	47963 RS-CN-0186S-5 6.56 cu.ft. / 186 L 350W 110-120V / 60 Hz / 1 Ph 176.4 lbs 34.4" x 23" x 34.9"	



Countertop Curve Glass Refrigerated Display

Item Model Capacity Power Electrical Weight Dimensions	28" 47448 RC-CN-0145C 5.12 cu.ft./145 L 320W 110-120V / 60Hz / 1 156.5 lbs. 27.7" x 22.6" x 34.9"	48" 47967 RC-CN-0225C 7.94 cu.ft./ 225 L 620W 110-120V / 60Hz / 1 229.3 lbs. 48.2" x 22.6" x 34.9"	60" 47968 RC-CN-0277C 9.78 cu.ft./277 L 770W 110-120V / 60Hz / 1 282.2 lbs. 60" x 22.6" x 34.9"



FOR MORE INFORMATION
PLEASE VISIT
WWW.OMCAN.COM
OR GIVE US A CALL
1.800.465.0234



Limited quantities available. E&OE. Valid to Authorized Omcans Dealers only. F.O.B. Mississauga (Ontario), Santa Fe Springs (California). Special prices on this flyer may not be included to any special freight program. ***NOT APPLICABLE TO PRIOR PURCHASE.*** **USD PRICES MAY BE SUBJECT TO INCREASE ON SOME ITEMS DUE TO NEW AND FUTURE TARIFF TAXES POLICIES***



OFFER ENDS:
December 06-23, 2024. E&OE.
Contact your Account Manager for more info

TRENTO presents

12 DAYS OF CHRISTMAS SPECIAL!

Let's finish the year with something new!



Stainless Steel Countertop Pasta Machine

FEATURES:

- Possibility to produce many different shapes of pasta just changing the die
- Touch control panel
- Part in stainless steel or in food suitable material
- Mixer and worm running in both rotation direction
- Easy cleaning due to moving parts easily removable
- IEC-C14 male connector (compatible with worldwide power cords)
- Already pre-arranged for PRO automatic cutter
- Noiseless working operations
- Supplied with: measuring liquid jug, die fixing wrench, extruding pipe stopper.

Item

Model

Capacity (per Hour)
Cycle Capacity
Pasta Sheet Width
Material
Power
Electrical
Weight
Dimensions

48226

PM-IT-0005

11 lb. (5 kg.)
4 lb. (1.8 kg.)
3.1" (80 mm)
Stainless Steel
380W (0.5 HP)
110V/ 60Hz/ 1Ph
53 lb.
9" x 19" x 12"



Trento - Vertical Vacuum Packaging Machine

FEATURES:

- Max bag size 300 x 350mm which can easily hold 3 Lt
- EASY TOUCH controls
- Lid without pistons
- Practical niches on the profile to move the unit
- Extraordinary patented solution for internal cleaning
- Transparent sides of the tank offer perfect visibility inside the tank
- Side panels can be easily and completely disassembled without tools for easy and thorough cleaning inside the tank

Item

Model

Bag Size
Seal Bar Length
Pump
Power
Amps
Electrical
Weight
Dimensions

48246

VP-IT-0005

11.8" x 13.8"
12.25"
5 m3/h
850W
7A
110-120-V/60Hz/1Ph
49 lbs
16.4" x 15.6" x 20.5"



Trento - Musso Stella Ice Cream Maker

FEATURES:

- **Durable Construction**
Made of AISI 304 grade stainless steel, and Sharp stainless-steel paddle breaks up any lumps and helps prevent ice formation
- **Low Dispersion**
Refrigerant coil welded directly to the bowl to minimize temperature dispersion
- **Perfect Speed**
Perfect paddle speed (>76 rpm) for incorporating just the right amount of air for that unique gelato texture

Item

Model

Capacity
Max Ingredients Capacity
Bowl Capacity
Power
Electrical
Paddle Induction Motor
Weight
Dimensions

58179

FR-IT-0003

26.5 cu. ft. / 750L
1.5L
3L
250 W
110V / 60Hz
76 RPM
68 lb
12.2" x 20.1" x 13.8"



FOR MORE INFORMATION
PLEASE VISIT
WWW.OMCAN.COM
OR GIVE US A CALL
1.800.465.0234



Limited quantities available. E&OE. Valid to Authorized Omcan Dealers only. F.O.B. Mississauga (Ontario), Santa Fe Springs (California). Special prices on this flyer may not be included to any special freight program. ***NOT APPLICABLE TO PRIOR PURCHASE *** **USD PRICES MAY BE SUBJECT TO INCREASE ON SOME ITEMS DUE TO NEW AND FUTURE TARIFF TAXES POLICIES***



OFFER ENDS:

December 06-23, 2024. E&OE.

Contact your Account Manager for more info



12 DAYS OF CHRISTMAS SPECIAL!

Let's finish the year with something new!



Gelato Dipping Cabinet with Flat Sneeze Guard and Pans

Item	26" wide with 4 Pan 47742	50" wide with 9 Pan 47743	71" wide with 13 Pan 47744
Model	FR-CN-0005	FR-CN-0009	FR-CN-0014
Capacity	4.25 cu.ft. (120 L)	10.2 cu.ft. (290 L)	15.9 cu.ft. (450 L)
Maximum Load	265 lb. (120 kg)	639.3 lb. (290 kg.)	992.1 lb. (450 kg.)
Power	210W	260W	295W
Electrical	110V / 60Hz / 1Ph	110V / 60Hz / 1Ph	110V / 60Hz / 1Ph
Weight	154.3 lbs	198.4 lbs	257.9 lbs
Dimensions	26.2" x 28.1" x 52.2"	49.6" x 28.1" x 52.2"	70.9" x 28.1" x 52.2"



Ice Maker Dual Water Input

Item	48054
Model	IC-CN-0089ST
Bin Capacity	33 lbs/ 15 kg
Production per/day	80 lb / 36 kg
Power	350 W
Electrical	115V / 60Hz / 1Ph
Weight	79.4 lbs / 36 kg
Dimensions	19.7" x 17.7" x 35.4"



All-Stainless-Steel Floor Model Band Saw

Item	80" Blade 48786	95" Blade 48787
Model	BS-CN-2020-S	BS-CN-2400-S
Blade Length	79.5"	94.5"
Cutting Capacity	7.9" x 12"	9.9" x 14"
Cutting Table	Fixed	Fixed
Power	2 hp	2.95 hp
Speed of Motor	1400r/min	1400r/min
Electrical	220V /60Hz / 1Ph	220V /60Hz / 1Ph
Weight	265 lbs	409 lbs
Dimensions	23.5" x 26.5" x 62"	31.5" x 29" x 68"



Dry Aging Cabinet

Item	46689
Model	DA-CN-0480
Capacity	16.95 cu.ft. (480 L)
Power	200 W
Amp	1.8 A
Electrical	110-120V / 60Hz / 1Ph
Weight	269 lb
Dimensions	27.6" x 31.9" x 65.4"



#12 Meat Grinder

Item	47735
Model	MG-CN-0012-N
Capacity per Hour	264.6 lb. (120 kg.)
Power	850w
Electrical	110-120V/ 60Hz/1Ph
Weight	47.3 lb
Dimensions	18.6" x 8.7" x 14.8"



Single Chamber Electric Pizza Oven with Glass Door



Item	44309
Model	CE-CN-0016G
Power	1,700W
Electrical	120V / 60Hz / 1Ph
Pizza Size	Ø 15" / 380 mm
Weight	33.1 lbs
Dimensions	23.8" x 19.7" x 8.8"



FOR MORE INFORMATION
PLEASE VISIT
WWW.OMCAN.COM
OR GIVE US A CALL
1.800.465.0234



Limited quantities available. E&OE. Valid to Authorized Omcans Dealers only. F.O.B. Mississauga (Ontario), Santa Fe Springs (California). Special prices on this flyer may not be included to any special freight program. ***NOT APPLICABLE TO PRIOR PURCHASE.*** **USD PRICES MAY BE SUBJECT TO INCREASE ON SOME ITEMS DUE TO NEW AND FUTURE TARIFF TAXES POLICIES***



OFFER ENDS:
December 06-23, 2024. E&OE.
Contact your Account Manager for more info



12 DAYS OF CHRISTMAS SPECIAL!

Let's finish the year with something new!



Commercial Electric Rice Cooker

Item 47591
Model CE-CN-0060-E
 Capacity uncooked rice 6 L or 32 cups | cooked rice - 13L or 64 cups
 Cooking Time 40 mins
 Power 1,550 W
 Electrical 120V / 60Hz / 1Ph
 Weight 22.8 lbs
 Dimensions 19.1" x 16.5" x 15.7"



Sausage Stuffer

Item 47539
Description Vertical - Gear Drive
Capacity 15 lbs/7kg
Material 201 Frame/304 Cylinder
Weight 27.3 lbs
Dimensions 12.2" x 12.2" x 30.5"



Espresso Machine

Item 44602
Model CM-CN-0019
Bean Hopper Capacity 200g
Water Tank Volume 1.9L
Power 1400W
Electrical 110 - 127 VAC / 60Hz
Weight 20.9lb
Dimensions 11" x 16.7" x 13.8"



Hot Chocolate Dispenser

New Feature: Drip tray alarm indicator

Item 39482
Model DI-CN-0005
Capacity 1.3 Gal / 5 L
Power 1,200 W
Electrical 120 V / 60 Hz / 1 Ph
Weight 16 lbs
Dimensions 16" x 11" x 18.3"



Heat Lamp - Ceiling Mount

Item 48088 Model FW-CN-0170S	Silver	Black
	48088	47874
Shade Color	Silver	Black
Material	Aluminum	Aluminum
Retracted Cord Length	(min)30" / (max) 80"	(min)30" / (max) 80"
Dome/Shade Dimensions	6.7"	6.7"
Power	250 W	250 W
Electrical	120V	120V
Weight	1.4 kg	1.4 kg



Infrared Digital Food Thermometer



Item 47223
Features °C/°F Dual Scale
Material ABS
Weight 0.24 lb.
Dimensions 5.5" x 2.6" x 1.5"



Juice Beverage Dispenser

Item 81120	12 Qt. Single Tank	2 x 12 Qt. Double Tank	20 Qt. Single Tank
	81120	81121	81122
Capacity	3 Gal/11.4 L/12 Qt	2 tanks x 3 Gal/ 11.4 L/12 Qt	5 Gal/ 18.9 L/ 20 Qt
Material	Polypropylene (PP)	Polypropylene (PP)	Polypropylene (PP)
Weight	4 lbs	6.8 lbs	3.7 lbs
Dimensions	7.9" x 17.3" x 20.7"	16.1" x 17.3" x 20.7"	11.1" x 12.6" x 22"



FOR MORE INFORMATION
 PLEASE VISIT
WWW.OMCAN.COM
 OR GIVE US A CALL
1.800.465.0234



Limited quantities available. E&OE. Valid to Authorized Omcans Dealers only. F.O.B. Mississauga (Ontario), Santa Fe Springs (California). Special prices on this flyer may not be included to any special freight program. ***NOT APPLICABLE TO PRIOR PURCHASE.*** **USD PRICES MAY BE SUBJECT TO INCREASE ON SOME ITEMS DUE TO NEW AND FUTURE TARIFF TAXES POLICIES***



OFFER ENDS:
December 06-23, 2024. E&OE.
 Contact your Account Manager for more info



12 DAYS OF CHRISTMAS SPECIAL!

Let's finish the year with something new!

Pasta Cooker Double Tank - Natural Gas



Item	48000
Model	CE-CN-0022-NG
Capacity	22 Gal / 41.6L
Gas Type	Natural Gas
Total BTU	140,000 BTU
Weight	363 lbs
Dimensions	31.4" x 35.5" x 46.9"



Electric Single Tank Pasta Cooker



Item	47503
Model	CE-CN-0004-N
Net Volume	2.4 Gallon / 9 Liter
Power	3600 W
Electrical	240V / 60Hz / 1Ph
Weight	37 lbs
Dimensions	14" x 22" x 18"



Commercial Gas Range with Griddle and Standard Oven

Item	48189
Model	CE-CN-0914G-RC
Gas Type	Natural Gas
BTU	-Total: 93,000 BTU -Griddle: 21,000 BTU x 3 -Oven: 30,000 BTU
Griddle Plate Dimensions	36" x 22"
Weight	456 lbs
Dimensions	36" x 32.6" x 56.7"



Commercial Gas Range with 2 Burners, Griddle and Standard Oven

Item	46026
Model	CE-CN-0002-GN
Gas Type	Natural Gas
BTU	-Total: 131,000 BTU -Burner: 30,000 BTU each -Griddle: 20,000 BTU -Oven: 31,000 BTU)
Griddle Plate Dimensions	20" x 24"
Weight	403 lbs
Dimensions	36" x 32.5" x 60"



FOR MORE INFORMATION
PLEASE VISIT
WWW.OMCAN.COM
OR GIVE US A CALL
1.800.465.0234



Limited quantities available. E&OE. Valid to Authorized Omcans Dealers only. F.O.B. Mississauga (Ontario), Santa Fe Springs (California). Special prices on this flyer may not be included to any special freight program. ***NOT APPLICABLE TO PRIOR PURCHASE.*** **USD PRICES MAY BE SUBJECT TO INCREASE ON SOME ITEMS DUE TO NEW AND FUTURE TARIFF TAXES POLICIES***



OFFER ENDS:
December 06-23, 2024. E&OE.
Contact your Account Manager for more info



12 DAYS OF CHRISTMAS SPECIAL!

Let's finish the year with something new!



Countertop Gas Combination Hot Plate, Charbroiler and Griddle Combo

Item	36"
Model	48086
Gas Type	CE-CN-12H12C12G
BTU (per hour)	Natural Gas
Types of Cooking Surfaces:	115,000
Weight	2x - 12" Hot Plate 1x - 12" Charbroiler 1x - 12" Griddle
Dimensions	195 lb
	36" x 28.8" x 15.6"



Countertop Gas Combination Charbroiler and Griddle Combo

Item	24"	36"	48"
Model	48295	48296	48297
Type	CE-CN-12C12G	CE-CN-12C24G	CE-CN-24C24G
Gas Type	12" Charbroiler 12" Griddle	12" Charbroiler 24" Griddle	24" Charbroiler 24" Griddle
Total BTU/h	Natural Gas Liquid Propane	Natural Gas Liquid Propane	Natural Gas Liquid Propane
Weight	65,000	95,000	130,000
Dimensions	143.3 lb	209 lb	251 lb
	24" x 29" x 15.5"	35.8" x 28.8" x 15.5"	48" x 29" x 15.5"



Floor Model Deep Fryer for Funnel Cake and Donut

Item	170 lb Capacity
Model	49102
Oil Capacity	CE-CN-0170
Total BTU/h	170 lbs
Weight	Natural Gas
Dimensions	120,000
	264 lbs
	56.8" x 41.3" x 58"



Countertop Model Deep Fryer Donut/ Funnel Cake

Item	30 lb Capacity	40 lb Capacity
Model	48101	48102
Oil Capacity	CE-CN-0030-FN	CE-CN-0040-FN
Total BTU/h	15 - 30 lbs/ 7 - 14 kgs	20 - 40 lbs/ 9 - 18 kgs
Weight	Natural Gas	Natural Gas
Dimensions	50,000	75,000
	103 lbs	134 lbs
	23" x 29.6" x 19.7"	32" x 29.6" x 19.7"



Oil Filtering Machine

Item	49104
Model	OF-CN-0057
Capacity	110 lb. (50 kg.)/57 L
Filtering Capacity	3.5 GPM
Power	1/3 hp
Electrical	120V / 60Hz
Weight	119 lbs.
Dimensions	20" x 35.7" x 22.5"



FOR MORE INFORMATION
PLEASE VISIT
WWW.OMCAN.COM
OR GIVE US A CALL
1.800.465.0234



Limited quantities available. E&OE. Valid to Authorized Omcans Dealers only. F.O.B. Mississauga (Ontario), Santa Fe Springs (California). Special prices on this flyer may not be included to any special freight program. ***NOT APPLICABLE TO PRIOR PURCHASE.*** **USD PRICES MAY BE SUBJECT TO INCREASE ON SOME ITEMS DUE TO NEW AND FUTURE TARIFF TAXES POLICIES***



OFFER ENDS:
December 06-23, 2024. E&OE.
Contact your Account Manager for more info



12 DAYS OF CHRISTMAS SPECIAL!

Let's finish the year with something new!



propane tank not included

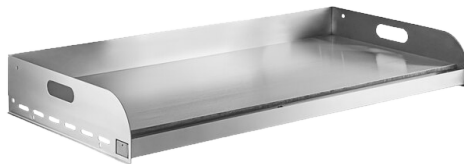
Stainless Steel Propane Outdoor BBQ Grill

Item	5 Burners 47840	6 Burners 47841
Model	CE-CN-0036-S LP	CE-CN-0048-S LP
Gas Type	Liquid Propane	Liquid Propane
BTU per Hour	80,000	96,000
Number Of Burners	5	6
Construction	Stainless Steel	Stainless Steel
Weight	136 lbs	161 lbs
Dimensions	35.4" x 30.3" x 34.8"	47.2" x 30.3" x 34.80"



Stainless Steel Oven for Outdoor BBQ Grill

Item	30" 47849	36" 47850
Compatible with	BBQ Grill #47352	BBQ Grill #47840
Material	304 Stainless Steel	304 Stainless Steel



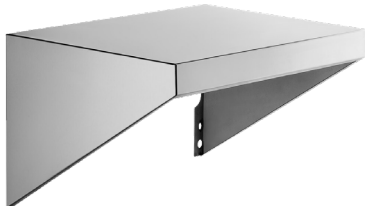
Stainless Steel Griddle Plate for Outdoor BBQ Grill

Item	30" 47843	36 1/2" 47844	48" 47845
Compatible with	BBQ Grill #47352 & #47353	BBQ Grill #47840	BBQ Grill #47841
Material	304 Stainless Steel	304 Stainless Steel	304 Stainless Steel
Weight	88 lb	104 lb	139 lb
Dimensions	28.6" x 22.5" x 6"	34.5" x 22.5" x 6"	46.4" x 22.5" x 6"



Stainless Steel Front Shelf for Outdoor BBQ Grill

Item	30" 47846	36" 47847	48" 47848
Compatible with	BBQ Grill #47352	BBQ Grill #47840	BBQ Grill #47841
Material	304 Stainless Steel	304 Stainless Steel	304 Stainless Steel



Stainless Steel Side Shelf for Outdoor BBQ Grill

Item	47842
Compatible with	BBQ Grill #47352/#47353/#47840/#47841
Material	304 Stainless Steel



FOR MORE INFORMATION
PLEASE VISIT
WWW.OMCAN.COM
OR GIVE US A CALL
1.800.465.0234



Limited quantities available. E&OE. Valid to Authorized Omcans Dealers only. F.O.B. Mississauga (Ontario), Santa Fe Springs (California). Special prices on this flyer may not be included to any special freight program. ***NOT APPLICABLE TO PRIOR PURCHASE.*** **USD PRICES MAY BE SUBJECT TO INCREASE ON SOME ITEMS DUE TO NEW AND FUTURE TARIFF TAXES POLICIES***



OFFER ENDS:
December 06-23, 2024. E&OE.
Contact your Account Manager for more info

12 DAYS OF CHRISTMAS SPECIAL!

Let's finish the year with something new!



Two Chamber Wok Range

Stainless steel faucet, backsplash, pipe rack and water cooled top

Item	47726
Model	CE-CN-W2L0-NG
Total BTU	2 x 95,000=190,000
Gas Type	Natural Gas
Wok Top Pot	13" + 13"
Weight	113.1 lb. / 51.3 kg.
Dimensions	13" x 17.7" x 29"



Wok Cover - Stainless Steel

Item	Description
47865	16"
47545	14"



Wok Ring Stand - Stainless Steel

Item	Description
46664	10"



Iron Wok - Double Ear

Item	Description
47870	22"
47869	20"
47868	18"
47544	16"
47867	14"
47866	12"



Mandarin Wok - Stainless Steel - Welded

Item	Description
47542	16" - Welded
47863	14" - Welded



Mandarin Wok - Stainless Steel - Nailed

Item	Description
47864	16" - Nailed
47543	14" - Nailed



Mandarin Wok - Black Iron - Welded

Item	Description
47860	16" - Welded
47541	14" - Welded



FOR MORE INFORMATION
PLEASE VISIT
WWW.OMCAN.COM
OR GIVE US A CALL
1.800.465.0234



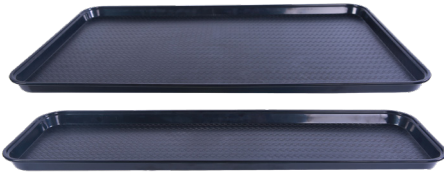
Limited quantities available. E&OE. Valid to Authorized OmcAn Dealers only. F.O.B. Mississauga (Ontario), Santa Fe Springs (California). Special prices on this flyer may not be included to any special freight program. ***NOT APPLICABLE TO PRIOR PURCHASE.*** **USD PRICES MAY BE SUBJECT TO INCREASE ON SOME ITEMS DUE TO NEW AND FUTURE TARIFF TAXES POLICIES***



OFFER ENDS:
December 06-23, 2024. E&OE.
Contact your Account Manager for more info

12 DAYS OF CHRISTMAS SPECIAL!

Let's finish the year with something new!



Produce Display / Merchandising Tray

Item	Dimensions	Color	Material
81100	9 x 26 X 3/4	Black	Polypropylene
81101	9 x 30 x 3/4	Black	Polypropylene
81102	18 x 26 x 3/4	Black	Polypropylene
81103	18 x 30 x 3/4	Black	Polypropylene



Cast Iron Tortilla / Dough Presses

Item	48184
Description	8"
Material	Cast Iron



Meat Lug Tote Box

Item	Dimensions	Color
81135	25 X 16 X 8 1/2	Blue
81136	25 X 16 X 8 1/2	Gray
81137	25 X 16 X 8 1/2	Green
81138	25 X 16 X 8 1/2	Red
81139	25 X 16 X 8 1/2	White
81140	25 X 16 X 8 1/2	Yellow



Glass Washer 3 Brushes with Suction Grip Base

Item	46352
Material	Nylon Brushes + Polypropylene Base
Weight	1 lb
Dimensions	9.8" x 4.1" x 8.1"



Silicone Pastry Basting Brush BPA Free

Item	Description	Color	Material
81143	10" x 1 3/4"	Red	Silicone
81144	10" x 1 3/4"	Black	Silicone
81145	10" x 1 3/4"	Grey	Silicone



Springform Cake Pan

Item	Description	Material
81104	6" x 3"	Aluminum
81105	8" x 3"	Aluminum
81106	9" x 3"	Aluminum
81107	10" x 3"	Aluminum
81108	12" x 3"	Aluminum



Springform Cake Pan - Non Stick

Item	Description	Material
81109	6" x 3"	Aluminized Steel
81110	8" x 3"	Aluminized Steel
81111	9" x 3"	Aluminized Steel
81112	10" x 3"	Aluminized Steel
81113	12" x 3"	Aluminized Steel



FOR MORE INFORMATION
PLEASE VISIT
WWW.OMCAN.COM
OR GIVE US A CALL
1.800.465.0234



Limited quantities available. E&OE. Valid to Authorized Omcans Dealers only. F.O.B. Mississauga (Ontario), Santa Fe Springs (California). Special prices on this flyer may not be included to any special freight program. ***NOT APPLICABLE TO PRIOR PURCHASE.*** **USD PRICES MAY BE SUBJECT TO INCREASE ON SOME ITEMS DUE TO NEW AND FUTURE TARIFF TAXES POLICIES***



OFFER ENDS:

December 06-23, 2024. E&OE.

Contact your Account Manager for more info



12 DAYS OF CHRISTMAS SPECIAL!

Let's finish the year with something new!



Condiment Squeeze Bottle - BPA

	12oz. Clear 48103	12oz. Red 48104	12oz. Yellow 48105
Item	48103	48104	48105
Volume	12 oz.	12 oz.	12 oz.
Material	PE+PP	PE+PP	PE+PP
Color	Clear	Red	Yellow
Dimensions	6.7"(H) x 2.75"(Dia.)	6.7"(H) x 2.75"(Dia.)	6.7"(H) x 2.75"(Dia.)

Cap for Condiment Squeeze Bottle

	81127	81128	81129
Item	81127	81128	81129
Compatible	12/16/24/32 oz.	12/16/24/32 oz.	12/16/24/32 oz.
Color	Clear	Red	Yellow

Stackable Pizza Dough Proofing Box and Lid



	22.5" x 15.2" x 3" 81158	22.5" x 15.2" x 4.25 81154	22.5" x 15.2" x 5" 81159
Item	81158	81154	81159
Dimensions	22.5" x 15.2" x 3"	22.5" x 15.2" x 4.25	22.5" x 15.2" x 5"
Material	Polypropylene (PP)	Polypropylene (PP)	Polypropylene (PP)

	81155
Item	81155
Description	Lid for items #81154/#81158/#81159
Material	Polypropylene (PP)



Pizza Bubble Popper

	39" with Wooden Handle 44969
Item	44969
Material	Aluminum



Baguette/French Bread Pan

	4 Loaves 81114	5 Loaves 81115	6 Loaves 81116
Item	81114	81115	81116
Material	Glazed aluminum	Glazed aluminum	Glazed aluminum
Compartment	26" x 3 7/8"	26" x 3"	26" x 2-7/16"
Dimensions	26" x 18" x 1.2"	26" x 18" x 1.2"	26" x 18" x 1.2"



Pizza Pan Rack

	81118
Item	81118
Description	10 - Slot
Thickness	4.55mm + 6mm
Dimensions	16" x 16" x 27.5"



Pizza and Cakes Stand

	12" 48175
Item	48175
Material	Aluminum Alloy
Color	Silver
Dimensions	12" dia x 5" h



FOR MORE INFORMATION
PLEASE VISIT
WWW.OMCAN.COM
OR GIVE US A CALL
1.800.465.0234



Limited quantities available. E&OE. Valid to Authorized Omcans Dealers only. F.O.B. Mississauga (Ontario), Santa Fe Springs (California). Special prices on this flyer may not be included to any special freight program. ***NOT APPLICABLE TO PRIOR PURCHASE.*** **USD PRICES MAY BE SUBJECT TO INCREASE ON SOME ITEMS DUE TO NEW AND FUTURE TARIFF TAXES POLICIES***



OFFER ENDS:
December 06-23, 2024. E&OE.
Contact your Account Manager for more info



12 DAYS OF CHRISTMAS SPECIAL!

Let's finish the year with something new!



Janitor Cabinet

2 Doors with Left Mop Sink, Service Faucet and Hose

Item	48231
Material	18GA.304 Stainless Steel
Weight	275 lbs
Dimensions	50.25" x 22.6" x 77.9"



Horizontal Baby Changing Station Table

Item	48100
Capacity	50 lbs. (22.6 kg.)
Material	Low-Density Polyethylene (LPDE)
Color	Grey
Weight	23.8 lbs
Dimensions	35" x 4" x 20"



Steam Table Pan Rack

Item	48013
Capacity	(10) 14-1/4" x 22"
Weight	Steam Table Pans 20.9 lbs
Dimensions	16-1/2" x 22" x 41"



Universal Pan Rack

Item	48244
Description	• 10" x 30" Trays • 12" x 30" Trays
Material	Aluminum
Weight	43 lbs.
Dimensions	16" x 32-1/2" x 70-11/16"



FOR MORE INFORMATION
PLEASE VISIT
WWW.OMCAN.COM
OR GIVE US A CALL
1.800.465.0234



Limited quantities available. E&OE. Valid to Authorized Omcan Dealers only. F.O.B. Mississauga (Ontario), Santa Fe Springs (California). Special prices on this flyer may not be included to any special freight program. ***NOT APPLICABLE TO PRIOR PURCHASE.*** **USD PRICES MAY BE SUBJECT TO INCREASE ON SOME ITEMS DUE TO NEW AND FUTURE TARIFF TAXES POLICIES***



OFFER ENDS:
December 06-23, 2024. E&OE.
Contact your Account Manager for more info