

WELCOME TO THE INTERACTIVE PDF



# CEDAR CREEK

2025 FULL-LINE PRODUCT CATALOG



THE SMART CHOICE FOR THE EXPERIENCED RV'ER



FORESTRIVERINC.COM





# CEDAR CREEK

## HIGH-END LUXURY FIFTH WHEEL

Cedar Creek's RVs are designed with your comfort and convenience in mind, offering a durable home for living life on the road. These RVs are designed to withstand the toughest conditions as our core strength of each unit comes from a handmade, 16" on-center residential frame construction. The exterior features true gelcoat sidewalls and 3M® adhesives, providing exceptional resistance to UV rays, heat, cold, moisture, oils, gasoline, and highway chemicals. This resilient bond grows stronger over time, making Cedar Creek RVs a preferred choice among experienced RVers. With serviceability in mind, Cedar Creek RVs are equipped with removable 4' x 6' ABS panels, 5/8" tongue-and-groove plywood floors, enclosed water lines, and 12V heating pads on all tanks. These features ensure comfortable and extended camping in all seasons, allowing you to enjoy worry-free adventures year-round.



### DETAILS ON PAGES: 4-11

SIZE RANGES: **36-40ft. Lengths**

WEIGHT RANGES: **16,505 - 18,000 lbs.**

NUMBER OF MODELS: **5**

QUICK LINKS: **CONSTRUCTION >>**

**CEDAR CREEK FEATURES** [GO >](#)

**FLOORPLANS >>**

**INTERIORS >>**

**VIDEOS** [GO >](#)



CEDAR CREEK

# EXPERIENCE

## MID-LEVEL LUXURY FIFTH WHEEL

Introducing the Cedar Creek Experience, a new line of luxury RVs that brings the experience of owning a high-end fifth wheel within reach. With sleek designs and premium features, these RVs offer the comfort and convenience of a high-end home on wheels, without breaking the bank.

Whether you're full-timing or enjoying weekend getaways, the Cedar Creek Experience provides the spaciousness and solid construction that experienced RV enthusiasts expect. With these fifth wheels offering the perfect blend of comfort and security, Experience enhances peace-of-mind for life's great adventures - no matter where the road leads.



### DETAILS ON PAGES: 12-23

SIZE RANGES: **29-39ft Lengths**

WEIGHT RANGES: **16,150 - 16,855 lbs.**

NUMBER OF MODELS: **6**

QUICK LINKS: **CONSTRUCTION >>**

**EXPERIENCE FEATURES** [GO >](#)

**FLOORPLANS >>**

**INTERIORS >>**

**VIDEOS** [GO >](#)



# COTTAGE

CEDAR CREEK

## HIGH-END LUXURY COTTAGE

The Cedar Creek Cottage destination trailer and fifth wheel: luxurious retreats on wheels designed to enhance your favorite outdoor locations. These models are specifically designed to provide a comfortable and convenient home away from home at any desired location. Built with quality and durability in mind, Cedar Creek RVs are designed to withstand extreme conditions and provide years of trouble-free use. With over 25 years of experience and a heritage of satisfied customers, Cedar Creek is dedicated to providing superior and luxurious products.



### DETAILS ON PAGES: 24-37

SIZE RANGES: **40-41ft. Lengths**

WEIGHT RANGES: **13,600 - 20,800 lbs.**

NUMBER OF MODELS: **6**

QUICK LINKS: **CONSTRUCTION >>**

**COTTAGE FEATURES** [GO >](#)

**FLOORPLANS >>**

**INTERIORS >>**

**VIDEOS** [GO >](#)





**ANYTHING BUT BASIC**







LEATHERETTE FABRIC







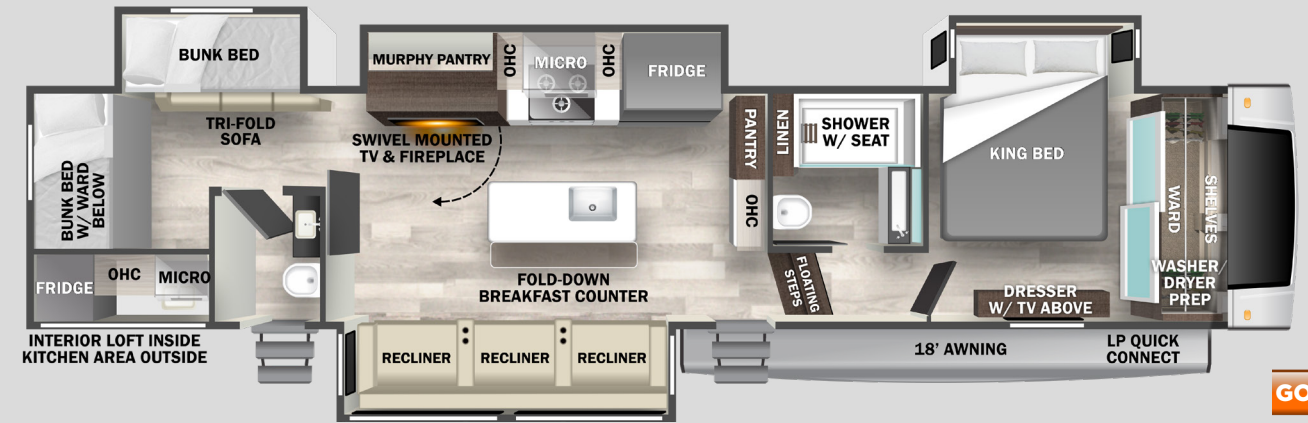


# CEDAR CREEK FLOORPLANS

[VIEW WEBSITE](#)

## 379BHO

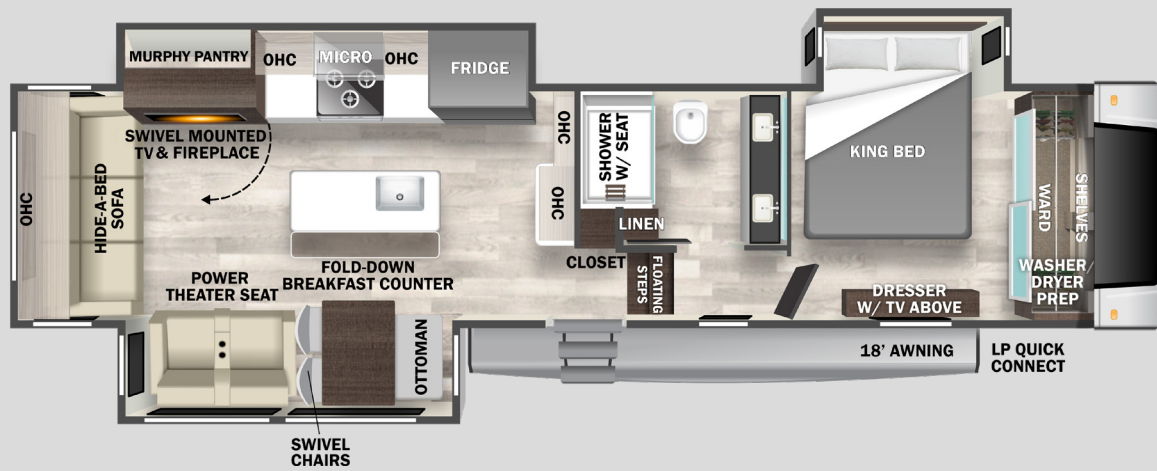
HITCH WEIGHT	GVWR	UVW	CCC	LENGTH	HEIGHT	WIDTH
2,495 lb.	17,995 lb.	15,114 lb.	2,881 lb.	43' 2"	13' 5"	101"



[GO](#)

## 361RL

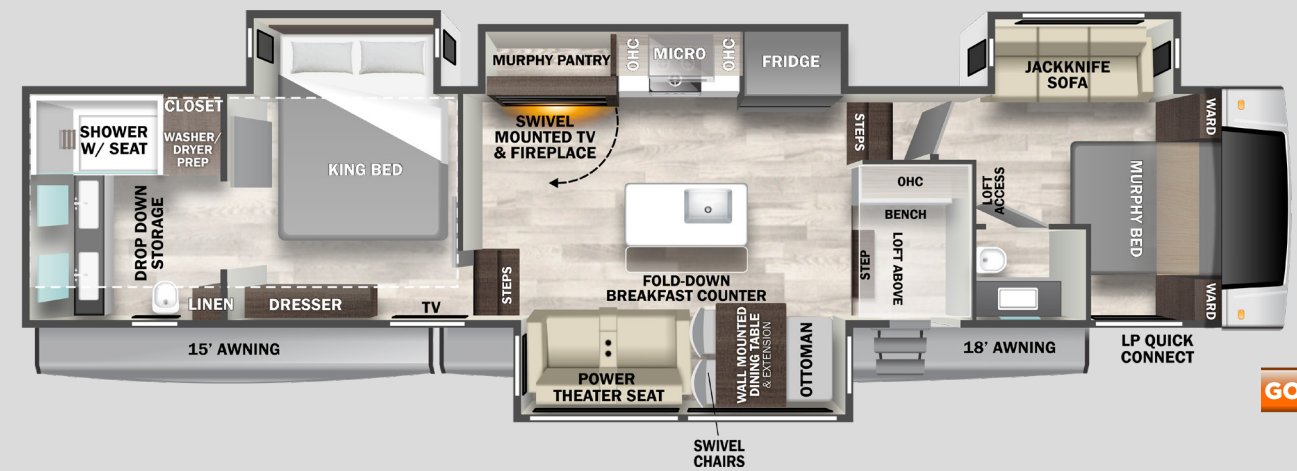
HITCH WEIGHT	GVWR	UVW	CCC	LENGTH	HEIGHT	WIDTH
2,505 lb.	16,505 lb.	14,190 lb.	2,396 lb.	40' 9"	13' 5"	101"



[GO](#)

## 381MUD

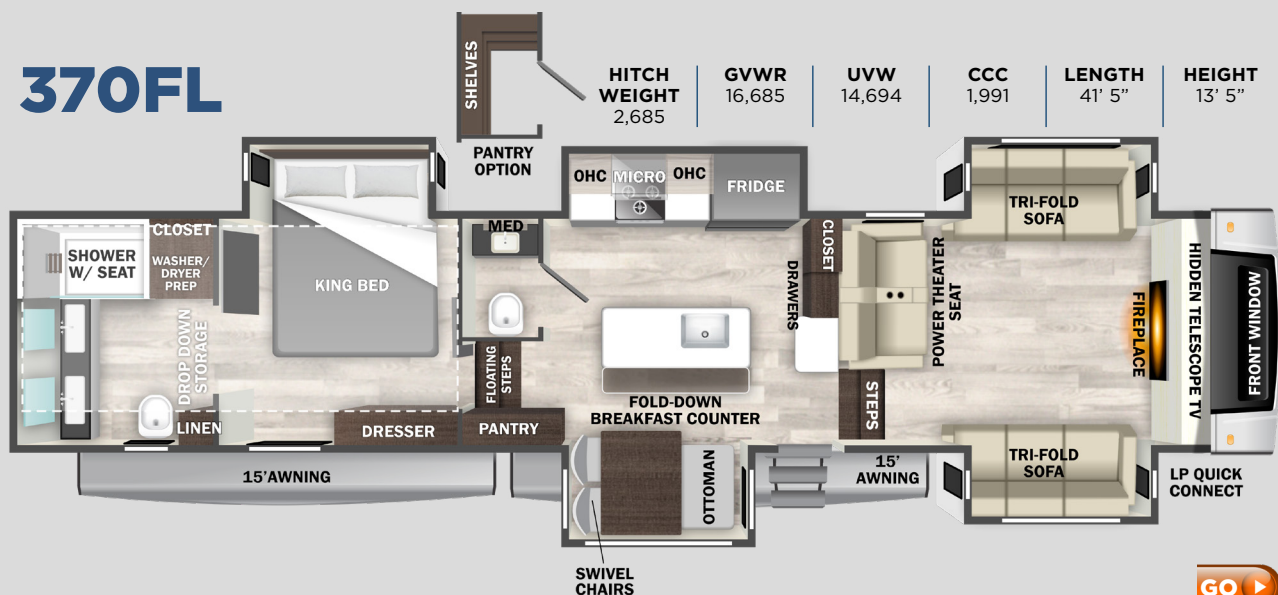
HITCH WEIGHT	GVWR	UVW	CCC	LENGTH	HEIGHT	WIDTH
2,490 lb.	18,000 lb.	15,429 lb.	2,571 lb.	43' 5"	13' 5"	101"



[GO](#)

## 370FL

HITCH WEIGHT	GVWR	UVW	CCC	LENGTH	HEIGHT	WIDTH
2,685	16,685	14,694	1,991	41' 5"	13' 5"	101"



[GO](#)

## 395WOW

HITCH WEIGHT	GVWR	UVW	CCC	LENGTH	HEIGHT	WIDTH
2,445 lb.	18,000 lb.	14,859 lb.	3,171 lb.	43' 2"	13' 5"	101"



DESK OPTION

[GO](#)





**CC**  
CEDAR CREEK  
EXPERIENCE

**FOREST RIVER**  
**CC**  
EXPERIENCE

**IF YOU KNOW, YOU KNOW**











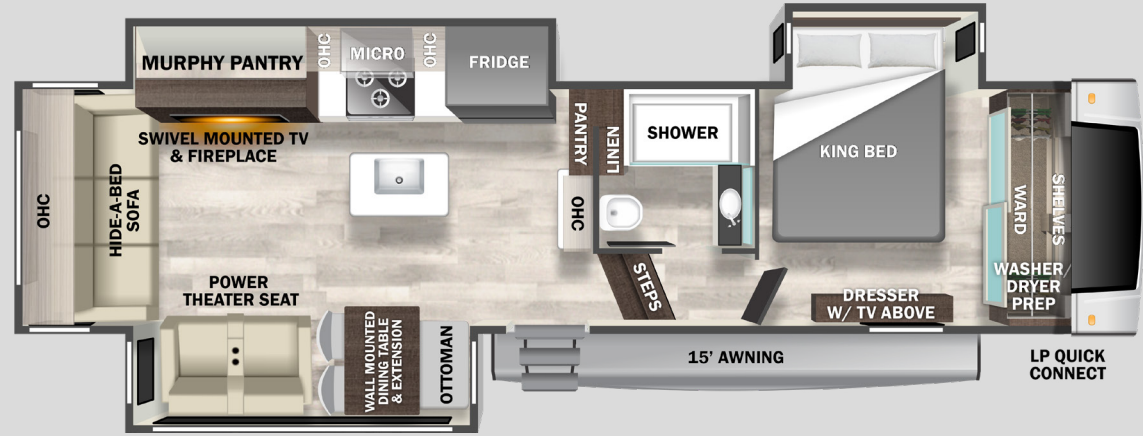






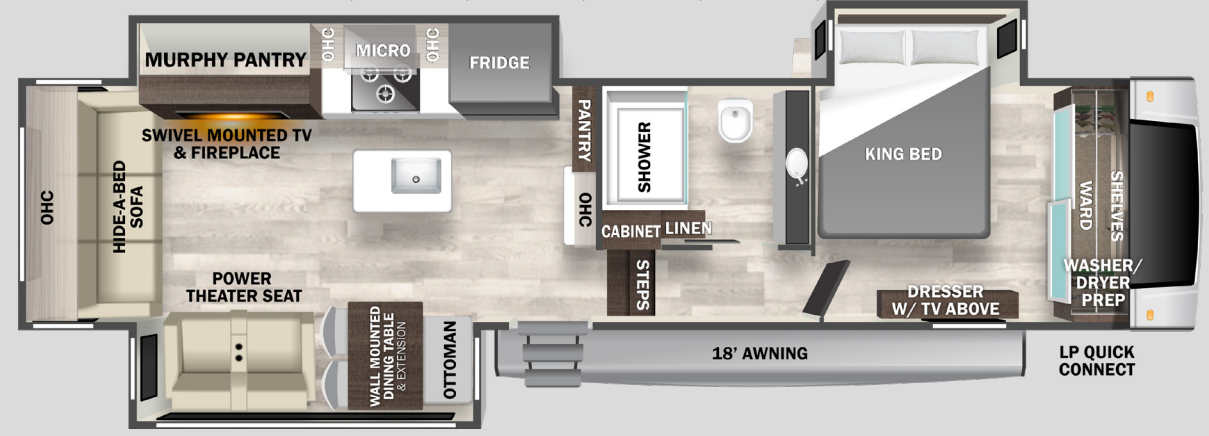
# 29RL

HITCH WEIGHT	GVWR	UVW	CCC	LENGTH	HEIGHT	WIDTH
2,525 lb.	16,525 lb.	11,894 lb.	4,631 lb.	35' 1"	13' 5"	101"



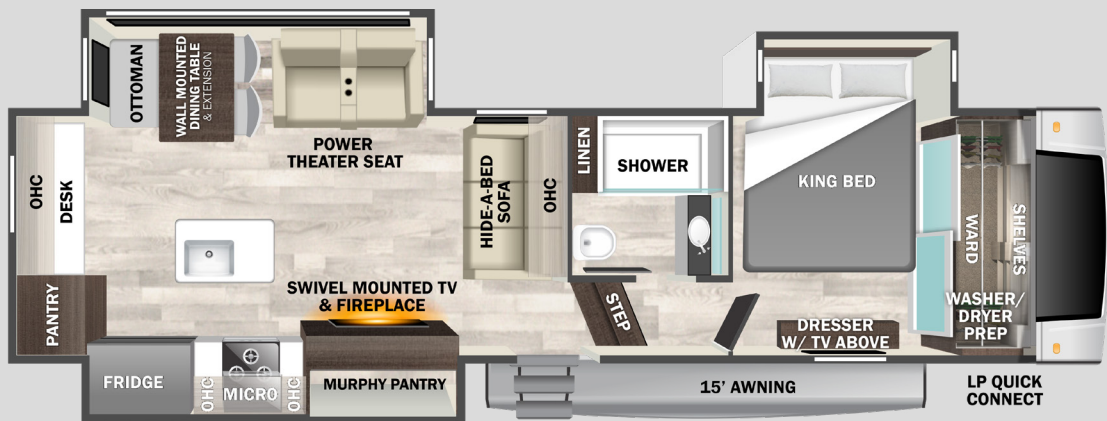
# 35RL

HITCH WEIGHT	GVWR	UVW	CCC	LENGTH	HEIGHT	WIDTH
2,185 lb.	16,185 lb.	12,614 lb.	3,571 lb.	39' 4"	13' 5"	101"



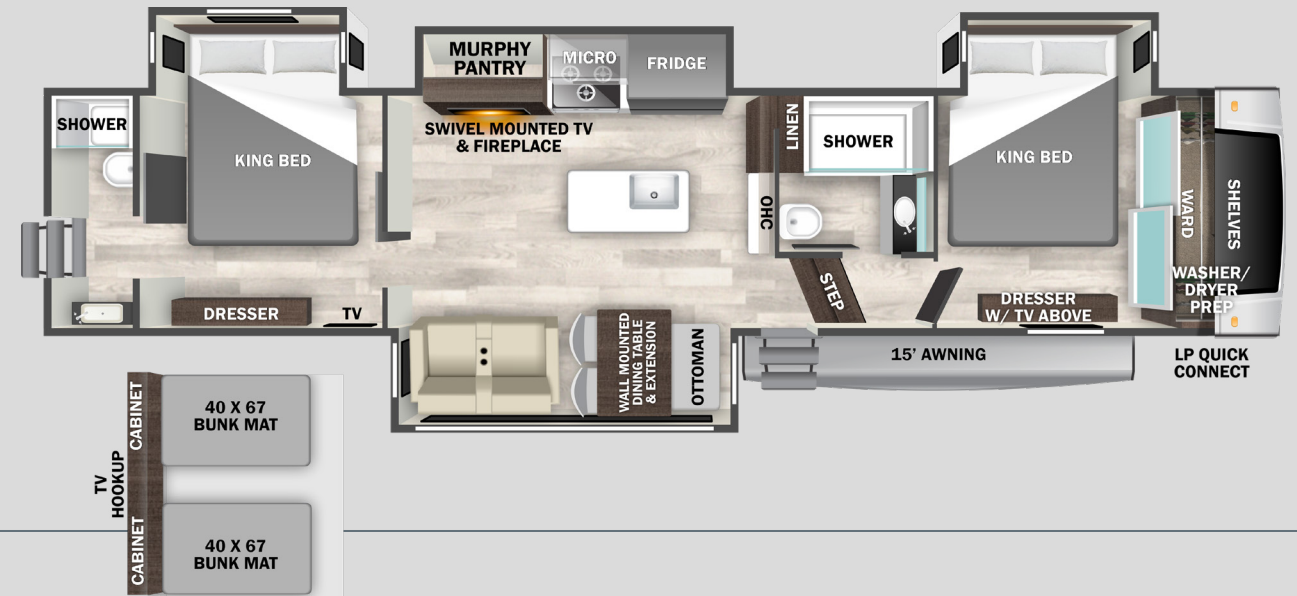
# 31RD

HITCH WEIGHT	GVWR	UVW	CCC	LENGTH	HEIGHT	WIDTH
2,150 lb.	16,150 lb.	11,939 lb.	4,211 lb.	35' 7"	13' 5"	101"



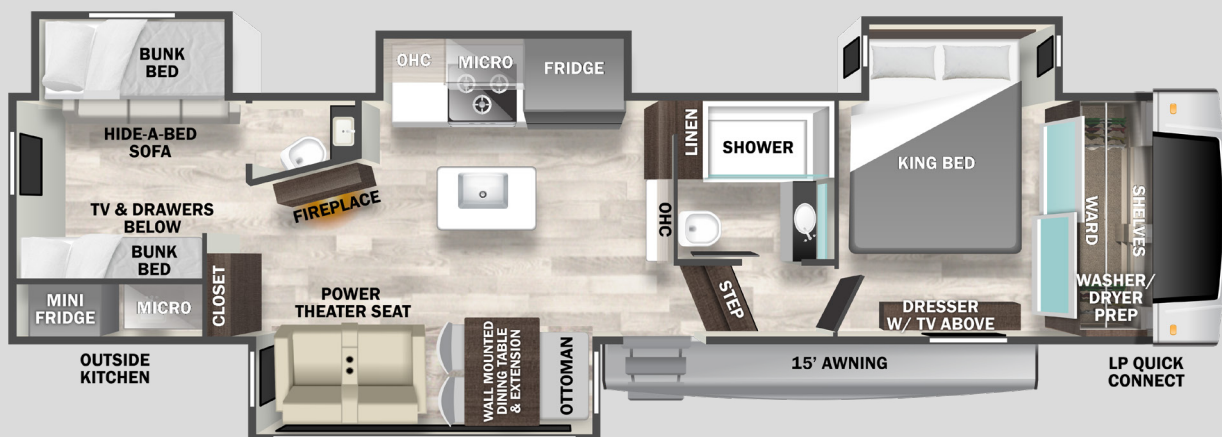
# 38DB

HITCH WEIGHT	GVWR	UVW	CCC	LENGTH	HEIGHT	WIDTH
2,855 lb.	16,855 lb.	14,704 lb.	2,151 lb.	43' 5"	13' 5"	101"



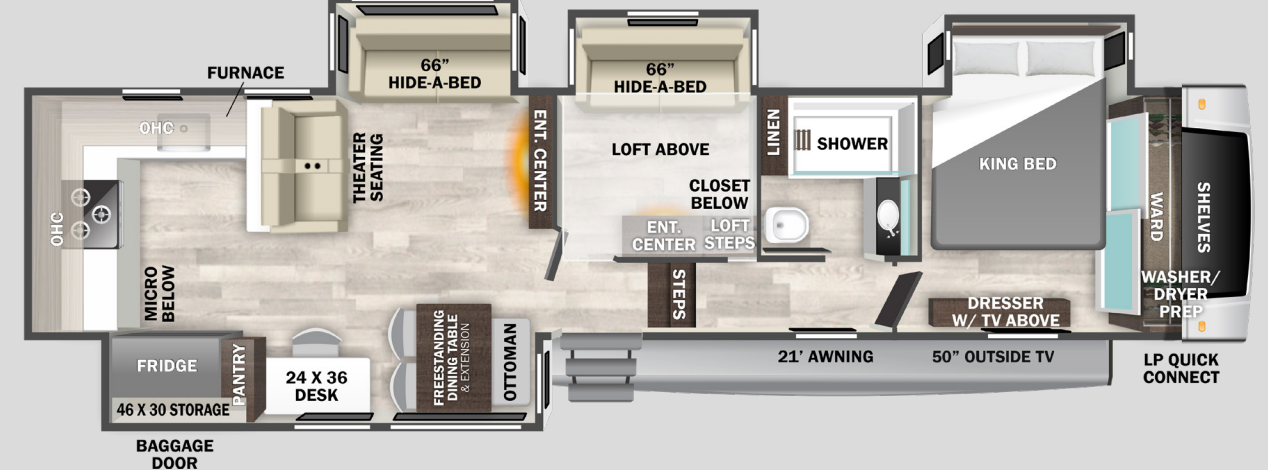
# 33BH

HITCH WEIGHT	GVWR	UVW	CCC	LENGTH	HEIGHT	WIDTH
2,296 lb.	16,296 lb.	13,380 lb.	2,915 lb.	39'	13' 5"	101"



# 39RKB

HITCH WEIGHT	GVWR	UVW	CCC	LENGTH	HEIGHT	WIDTH
2,860 lb.	16,860 lb.	14,484 lb.	2,376 lb.	43' 5"	13' 5"	101"



EXPERIENCE



Features and Options	Experience	Cedar Creek
New 101" Wide Body Frame	X	X
"True" Gelcoat Exterior (The Best of the Best in Exteriors)	X	X
True Gelcoat, Painted, Front Cap	X	X
Cedar Creek's Famous All Aluminum Superstructure on 16" Centers or less	X	X
3M® Bonded Sidewalls—Resilient, they grow stronger with age. They also have outstanding resistance to UV, heat, cold, moisture, oils, gasoline, and highway chemicals, which creates a bond that cannot delaminate with time.	X	X
6-Point Hydraulic – GEN 3 Leveling System w/Accent Lights	X	X
21,000 LB. Rhino Box Hitch	X	X
Hehr Frameless, Tinted Automotive Style Windows		X
Z-frame with Black Textured Metal Wrapped Skirting to the Frame	X	X
TST™ Tire Pressure Monitoring System	X	X
Metal Wrap Frame Cover		X
Mid-Ship Turn Signals	X	X
New Ultra Slim Rear Brake Lights	X	X
"7,000# Axles on 36", 8000# Axles on 37" with ABS Electronic Brakes"	X	X
Lionshead Special Trailer (ST) Tires "No Excuses" One-Year Guarantee! Goodyear Tires on 7K Axles and Cooper Tires on 8K Axles	X	X
4' x 6' ABS, Ribbed, Removable Underbelly Panels	X	X
Animal Leash Latch	X	X
Full, Walk-on Roof with AlphaPly TPO with Lifetime Warranty	X	X
Motion Lights in Outside Storage Areas and Front Storage Area	X	X
Road Warrior™ Suspension with Wet Bolts and Bronze Bushings	X	X
Wired for a 3rd AC	X	X
Wired for Furrion® Rear Observation Camera		X
12 Volt Heating Pads on All Black, Grey, & Fresh Water Tanks	X	X
Heated Front Storage Compartment with Motion Lighting	X	X
Electric Awning with LED Night Lights	X	X

Features and Options	Experience	Cedar Creek
Extra Wide, Friction Hinge, Black Glass Entry Door with New Entry Door Latch Extension	X	X
Individual Shut Off Valves - Kitchen and Bathroom	X	X
Nautilus P4 Multi-function Panel with Outside Shower, Black Tank Flush, 12 vt. Battery Disconnect	X	X
New Waterproof, Bug Proof Vixenite Slide Room floor panels	X	X
50 Amp Power Cord Reel		X
Quick Disconnect Exterior LP Gas Connection	X	X
16.5 cu. Ft. of Rear Storage with 120v Receipt and Heat (Where Available)		X
2 Coleman MACH 8 Plus 15,000 BTU Air Conditioners	X	X
Suburban ST-60 60,000 BTU Tankless Water Heater	X	X
2" Bike Rack Receiver (N/A 370FL, 381MUD)	X	X
Deep Cell Battery	X	X
2025 Features and Options		
One Year of™ RV Roadside Assistance	X	X
Free Membership to Forest River Owners Group F.R.O.G.	X	X
<b>Electric</b>		
Vegatouch® Control Panel and Firefly dimmer switches with wireless connectivity to your phone.		X
50" Smart Television w/Swing Arm (370FL on TV Lift)	X	X
32" Smart Television in the BR	X	X
12v. Bluetooth Stereo Speaker	X	X
(2) Exterior Satellite & Cable Hook-Ups to Bedroom and LR	X	X
New CradlePoint Wifi/5G Antenna and Day 1 Connectivity	X	X
Pre-Wired for Satellite to the Roof	X	X
<b>Kitchen</b>		
19.6 cu. Ft., Glass Front, 12v. Refrigerator with IceMaker	X	X
3 Burner Gas Oven with Pull Out Pan Drawer	X	X
Flush Floor Slides in Kitchen and Living Area	X	X

Features and Options	Experience	Cedar Creek
Residential Kitchen Island with Solid Surface Counter with Flush Mount, Stainless Steel, Work Station Sink	X	X
Breakfast Flip-Up Countertop in Island		X
Island Hidden Front Storage	X	
Cordless Sweeper	X	X
Murphy Pantry (N/A 370FL)	X	X
New Pull out Caddy in the Kitchen		X
Residential Dovetail, Self-Closing Drawers, and Hidden Hinge Cabinet Doors	X	X
Stainless Steel, 30" Over the Range Microwave with updated Backsplash	X	X
Under Island Pullout Caddy & Baking Tray Storage		X
Cutting Board Drawer with Cut-out Trash funnel	X	X
Power Fan with Rain Sensor Override in Kitchen	X	X
Vinyl Floor Covering	X	X
Wall Mounted Walnut table with (2) chairs, Storage Ottoman, Table Extension, and Hidden Silverware Drawer	X	X
Walnut / Two Tone Wooden Cabinets and Fascias	X	X
<b>Standard Living Room Features</b>		
Day / Night Roller Shades		X
Power Theater Seating with USB charging ports	X	X
Luxury Hide-a-Bed Sofa	X	X
<b>Standard Interior - Bathroom</b>		
Redesigned 48" x 30" Rectangular shower, sliding glass doors, and Upgraded Shower Head	X	X
Large Double Sink Bath Vanity with Solid Surface Countertop (Where Applicable)		X
Large Vessel Sink Bath Vanity (Where Applicable)	X	
18" High Porcelain Toilet with Top Circular Flush System	X	X
Create-A-Breeze Circulation Fan	X	X
Extra Storage for Linens	X	X
LED Night Motion Lighting under the Vanity	X	X
<b>Standard Interior - Bedroom</b>		
Residential Style Headboard with Luxurious Bedding Décor	X	X

Features and Options	Experience	Cedar Creek
Individual Reading Lighting above the Bed and USB Ports	X	X
Standard 72 x 80 King Bed	X	X
In the Wall Storage Cabinet in the Bedroom		X
Flip-Up Dresser Top with Hidden Storage	X	X
Black-Out Night Shades (BR Only)	X	X
Extra wide Valances that can accommodate C-pap machines	X	X
Prepped for an Optional Washer and Dryer	X	X
12v Motion lighting in the Closet	X	X
<b>Available Options</b>		
12' Power Awning on Dining Slide (N/A 370FL)	O	O
Slide-Out Awning Toppers	O	O
21,000 LB CURT™ Air Ride Hitch Coupler		O
3rd AC with Power Management System	O	O
2ND "Rich Solar" 200 Watt Solar Panel	O	O
LP Generator Prep	O	O
5.5K Onan Marquis Gold LP Generator w/ LP Prep		O
Cadet Wall Mounted Heater with Circulation Fan	O	O
Fisher / Paykel Dishwasher Drawer in the Island (N/A 370FL, 381MUD, 379BHO)		O
Dual Pane Frameless, Tinted Windows		O
Full Body Paint Package (Onyx, Sapphire, Opal)		O
Furrion Rear Observation or 4 Camera Security Systems		O
Heat Pump on Main Air Conditioner	O	O
King, Roof Mounted Satellite - My Dish RV Flexible Programming including local channels		O
Lithium 200X Package (2 Lithium, 2 solar panels & Accessories)		O
Lithium 480XL Package (4 Lithium, 4 Solar panels & Accessories)		O
30" Convection Microwave		O
Splendide Side x Side, Washer / Dryer		O
Upgraded Luxury King Bed		O





**ANYTHING BUT BASIC**







**40CCK**



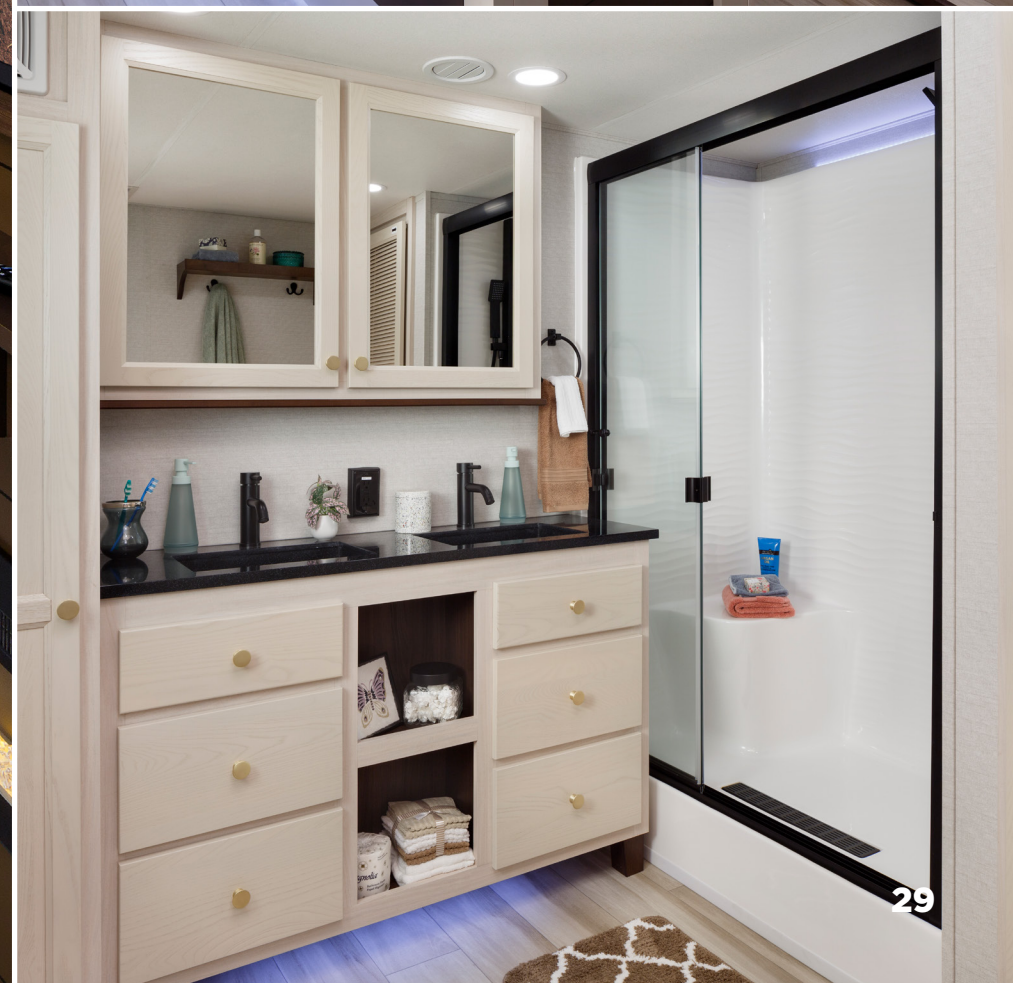
**26**



**40CFD**

**27**









CARBON EXTERIOR

## A NEW WAY TO GLAMP

Discover a new way to elevate your outdoor experience with our premium fifth wheel Cottage with weather-resistant gel-coat walls. Designed for durability and style, Cedar Creek offers the perfect blend of rugged functionality and modern luxury. Whether you're escaping for a weekend retreat or embarking on a longer adventure, these units provide a secure and comfortable space that feels like home while being fully immersed in nature. Built to withstand the elements, they ensure your camping/glamping setup is as cozy as it is adventurous, so you can enjoy the beauty of the outdoors without compromise.



COASTAL EXTERIOR







## 40CBK



**HITCH WEIGHT**  
1,565 lb.

**GVWR**  
15,565 lb.

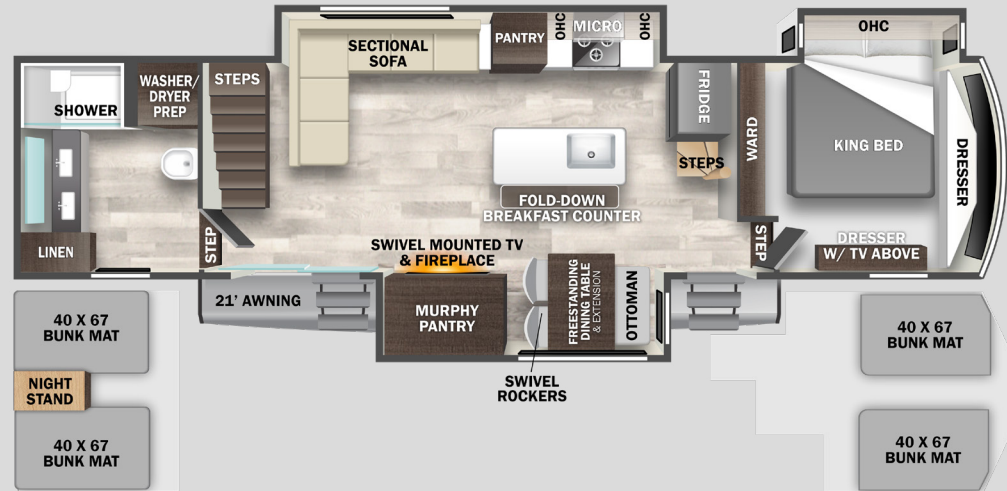
**UVW**  
13,478 lb.

**CCC**  
2,087 lb.

**LENGTH**  
41' 6"

**HEIGHT**  
13' 5"

**WIDTH**  
101"



## 40CDL



**HITCH WEIGHT**  
1,696 lb.

**GVWR**  
13,696 lb.

**UVW**  
11,716 lb.

**CCC**  
1,921 lb.

**LENGTH**  
40' 6"

**HEIGHT**  
13' 5"

**WIDTH**  
101"



## 40CCK



**HITCH WEIGHT**  
2,100 lb.

**GVWR**  
14,000 lb.

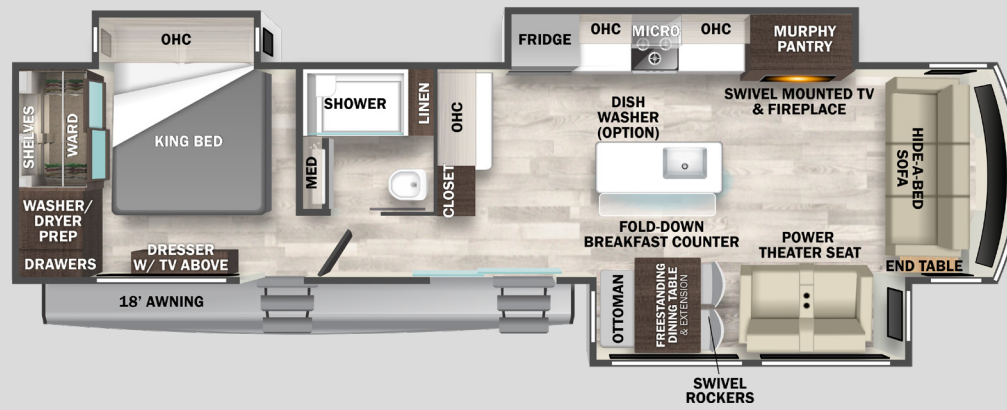
**UVW**  
12,055 lb.

**CCC**  
1,945 lb.

**LENGTH**  
40' 6"

**HEIGHT**  
13' 5"

**WIDTH**  
101"



## 40RDE



**HITCH WEIGHT**  
1,695 lb.

**GVWR**  
14,000 lb.

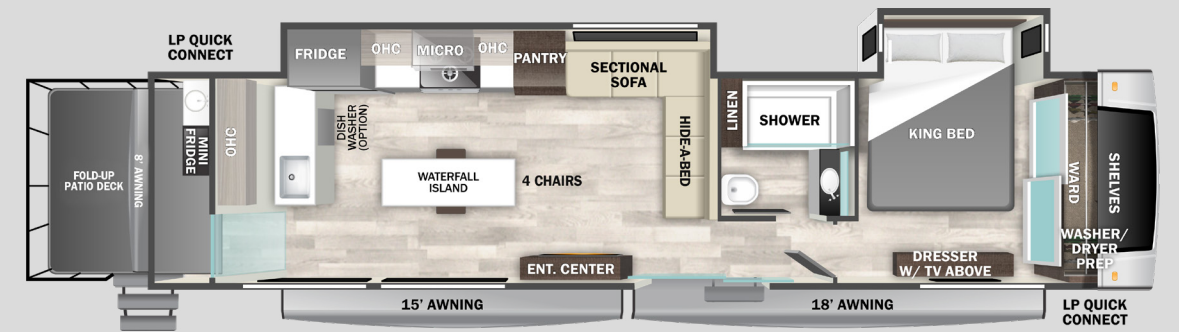
**UVW**  
12,304 lb.

**CCC**  
1,696 lb.

**LENGTH**  
43'

**HEIGHT**  
13' 5"

**WIDTH**  
101"



## 40CFD



**HITCH WEIGHT**  
1,238 lb.

**GVWR**  
13,238 lb.

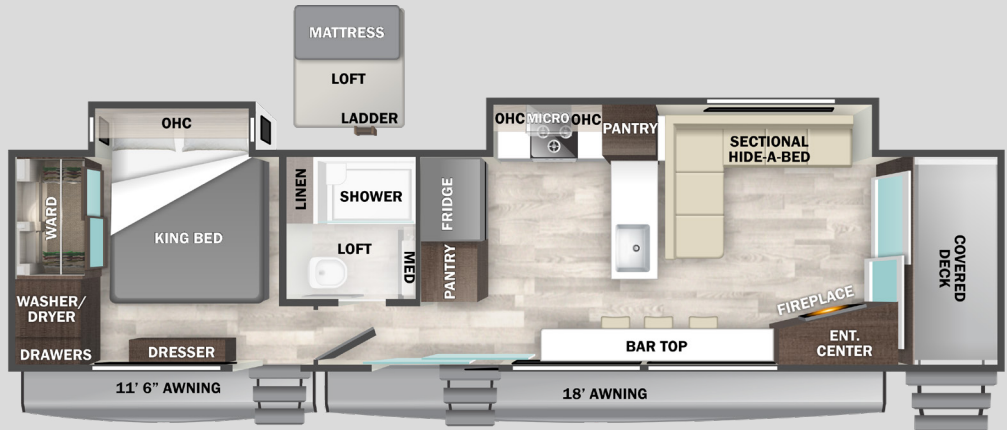
**UVW**  
11,977 lb.

**CCC**  
1,261 lb.

**LENGTH**  
42' 10"

**HEIGHT**  
13' 5"

**WIDTH**  
101"



## 40CRS

**HITCH WEIGHT**  
1,345 lb.

**GVWR**  
13,345 lb.

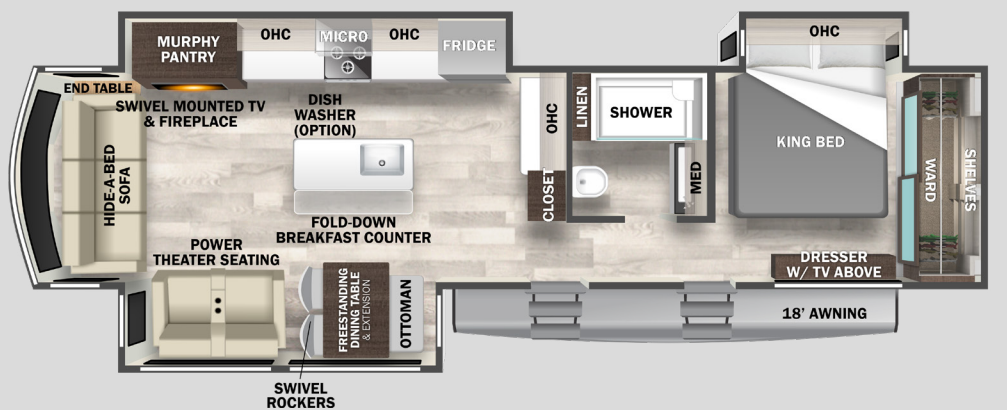
**UVW**  
12,004 lb.

**CCC**  
1,341 lb.

**LENGTH**  
42' 5"

**HEIGHT**  
13' 5"

**WIDTH**  
101"



## INTRODUCING THE ALL NEW FIFTH WHEEL COTTAGE



## 41FWC

### FEATURES

- Printed Gelcoat Exterior
- 38" x 80" Friction Hinge, Black Glass
- Entry Door with New Entry Door Latch Extension
- Hydraulic Front Jacks
- 55" Smart TV with Backlighting in LR
- J-Lounge Sofa with Pull Out Trundle creating Full Size Sleeping area
- Double Pull-out Pantry
- Pull Out Double Trash Bins
- Pull Out Flatware Cylinders and Fascia
- Splendide Stack Washer / Dryer
- Integrated Blackout Blinds Throughout
- Suburban ST-60 60,000 BTU Tankless Water Heater

**HITCH WEIGHT**  
2,820 lb.

**GVWR**  
20,820 lb.

**UVW**  
14,314 lb.

**CCC**  
2,250 lb.

**LENGTH**  
42' 6"

**HEIGHT**  
13' 5"

**WIDTH**  
101"

### 41FWC OPTIONS ONLY

- 18' Exterior Power Awning
- 2nd Power Awning
- 3 sets of Stab Jacks (6 Total)





Features and Options	TRAVEL TRAILER	FIFTH WHEEL
<b>Exterior</b>		
101" Wide Body Frame	X	X
"True" Gelcoat Exterior (The Best of the Best in Exteriors)	X	
New Printed Gelcoated Exterior		X
Cedar Creek's Famous All Aluminum Superstructure on 16" Centers or less	X	X
3M* Bonded Sidewalls—Resilient, they grow stronger with age. They also have outstanding resistance to UV, heat, cold, moisture, oils, gasoline, and highway chemicals, which creates a bond that cannot delaminate with time.	X	X
Hydraulic Front Jacks		X
21,000 LB. Rhino Box Hitch		X
Z-frame		X
(2) 6000# Axles / FW Only (3) #6000# Axles	X	X
4' x 6' ABS, Ribbed, Removable Underbelly Panels	X	X
AlphaPly TPO Roof Membrane with Lifetime Warranty - 40% Thicker	X	X
Wired for a 3rd AC	X	X
12 Volt Heating Pads on All Black, Grey, & Fresh Water Tanks	X	X
Electric Awning with LED Night Lights	X	
38" x 80" Friction Hinge, Black Glass Entry Door with New Entry Door Latch Extension (N/A on TT)		X
Dual Pane Patio Door	X	
Individual Shut Off Valves - Kitchen and Bathroom	X	X
Nautilus P4 Multi-function Panel with Outside Shower, Black Tank Flush, 12 vt. Battery Disconnect (N/A on TT)		X
New Waterproof, Bug Proof Vixenite Slide Room floor panels	X	X
2 Coleman MACH 8 Plus 15,000 BTU Air Conditioners	X	X
20 Gallon Electric Hot Water Heater with Bypass Kit	X	
Suburban ST-60 60,000 BTU Tankless Water Heater (N/A on TT)		X
One Year of <sup>TM</sup> RV Roadside Assistance	X	X
Free Membership to Forest River Owners Group F.R.O.G.	X	X

Features and Options	TRAVEL TRAILER	FIFTH WHEEL
<b>Electronics</b>		
50" Smart Television w/Swing Arm	X	
55" Smart TV with Backlighting in LR		X
32" Smart Television in the BR	X	X
12v. Bluetooth Stereo Speaker	X	X
(2) Exterior Satellite & Cable Hook-Ups to Bedroom and LR	X	X
New CradlePoint Wifi/5G Antenna and Day 1 Connectivity	X	X
Pre-Wired for Satellite to the Roof	X	X
<b>Kitchen</b>		
19.6 cu. Ft., Glass Front, 12v. Refrigerator with Icemaker	X	X
3 Burner Gas Oven with Pull Out Pan Drawer	X	X
Flush Floor Slides in Kitchen and Living Area	X	X
Residential Kitchen Solid Surface Counter with Flush Mount, Stainless Steel, Work Station Sink	X	X
Breakfast Flip-Up Countertop in Island	X	
Cordless Sweeper	X	X
Murphy Pantry	X	
Double Pull-out Pantry		X
Pull out Double Trash Bins		X
Pull Out Flatware Cylinders		X
Residential Dovetail, Self-Closing Drawers, and Hidden Hinge Cabinet Doors	X	X
Stainless Steel, 30" Over the Range Microwave	X	X
Under Island Pullout Caddy & Baking Tray Storage	X	
Cutting Board Drawer with Cut-out Trash funnel	X	
Power Fan with Rain Sensor Override in Kitchen	X	X
Vinyl Floor Covering	X	X
Dining table with (2) chairs, Storage Ottoman, Table Extension, and Hidden Silverware Drawer	X	
Flip Down Breakfast Counter with 3 chairs (41FWC Only)		X
Walnut / Two Tone Wooden Cabinets and Fascias	X	

Features and Options	TRAVEL TRAILER	FIFTH WHEEL
Matte Luxe Cabinets and Fascia		X
<b>Living Room</b>		
Day / Night Roller Shades	X	
Built in Premium Blackout Vertical Shades		X
New Single Window Fiberglass Cap with Electric Sidewinder Blackout Shade (W/A)	X	
Power Theater Seating with USB charging ports	X	
Luxury Hide-a-Bed Sofa	X	
J-Lounge Sofa with Pull Out Trundle creating Full Size Sleeping area		X
<b>Standard Interior - Bathroom</b>		
48" x 30" One Piece, Fiberglass Shower with glass doors, and Upgraded Shower Head	X	X
Large Bath Vanity with Solid Surface Countertop (Where Applicable)	X	
Large Vessel Sink, Bath Vanity with Backlit Mirror (Where Applicable)		X
18" High Porcelain Toilet with Top Circular Flush System	X	X
Extra Storage for Linens	X	X
LED Night Lighting under the Vanity	X	X
Residential Style Headboard with Luxurious Bedding Décor	X	X
Individual Reading Lighting above the Bed	X	X
USB Ports	X	X
Standard 72 x 80 King Bed	X	X
Flip-Up Dresser Top with Hidden Storage	X	X

Features and Options	TRAVEL TRAILER	FIFTH WHEEL
Black-Out Night Shades (BR Only)	X	
Prepped for an Optional Washer and Dryer	X	
Splendide Washer / Dryer Installed	O	X
12v Motion lighting in the Closet	X	X
<b>Available Options</b>		
12' Power Awning on Dining Slide	O	
18' Main Power Awning (FW Only)		O
2ND Smaller Power Awning (FW Only)		O
Slide-Out Awning Toppers	O	O
3rd AC with Power Management System	O	O
Cadet Wall Mounted Heater with Circulation Fan	O	O
Fisher / Paykel Dishwasher Drawer in the Island (N/A 41FWC)	O	
Dual Pane Frameless, Tinted Windows (N/A 41FWC)	O	
Heat Pump on Main Air Conditioner	O	O
King, Roof Mounted Satellite - My Dish RV Flexible Programming including local channels	O	O
30" Convection Microwave (N/A 41FWC)	O	
Splendide Washer / Dryer	O	
Upgraded Luxury King Bed	O	
4 Sets of Stabilizer Jacks (Total of 8)	O	
3 Sets of Stabilizer Jacks (Total of 6) (Hydraulic front Jacks Standard)		O





# ANYTHING BUT BASIC

[CLICK HERE FOR OUR CONSTRUCTION GUIDE](#)

## DESIGNED AND CONSTRUCTED TO LAST

- **Cedar Creek's dedication:** Over 25 years of building high-quality recreational vehicles.
- **Designed for durability:** Withstands rugged roads and extreme temperatures.
- **Focus on safety and comfort:** Owners appreciate the peace-of-mind with Cedar Creek.
- **State-of-the-art manufacturing:** Produced in a modern facility in Topeka, Indiana.
- **Efficient production process:** Built in approximately three days on efficient production lines.
- **Superior construction:** Only two manufacturers in the country build to the same standards as Cedar Creek.
- **Built to last:** Designed for serviceability and more durability.
- **Trusted reputation:** Choose Cedar Creek for higher standards of "doing it right."





# HOW IT'S MADE "ANYTHING BUT BASIC"

## SEE HOW THE SMARTEST CHOICE STACKS UP TO THE COMPETITION

Cedar Creek is dedicated to enhancing the joy of the outdoors and your peace of mind, by building better quality recreational vehicles designed to withstand rugged road conditions and extreme temperatures. Experience Cedar Creek – see where the road leads and enjoy what life has to offer.



200Watt Solar Panel

**7000# AND 8000# AXLES**  
with ABS Brakes



**32" EXTRA WIDE**  
Entry Door with extended  
entry door latch



**"TRUE" GELCOAT EXTERIOR**  
with Painted Front  
Fiberglass Cap

**PEBBLED METAL**  
Wrapped to the Frame

**101" WIDE BODY**  
Frame



**GEN 3, 6-POINT HYDRAULIC LEVELING SYSTEM**  
with Auto Return

### TESTING AND INSPECTIONS

Weekly, Cedar Creek units are put through Forest River's pre-delivery inspection facility. This 20,000 square foot facility gives our customers the ultimate assurance of quality. Our state-of-the-art facility gives immediate, daily feedback to production for optimum quality assurance in every unit we build.



**SCAN THE QR CODE WITH YOUR DEVICE**  
FOR MORE CEDAR CREEK  
INFORMATION AND  
VIDEO TOURS



### TRUSSES

Our 5" all-aluminum roof rafters allow us to install two 15,000 standard air conditioners and ensure universal cooling with a dual zone control system.

### HEATED TANKS

Black, grey, and fresh water tanks are installed with individual 12-volt, large surface heating pads on ALL tanks. These tank heaters allow for all season camping.

### Z-FRAME

Cedar Creek's "Z" Frame design is the industry standard. This unique frame was created to give our customers over 100 cu. ft. of extra front storage space. This flat floor design assists in easy removal of your heavy camping equipment.

### ROOFING

AlphaPly Roofing Membrane with Lifetime Warranty

### INSULATION

We glue residential, formaldehyde-free, glass wool insulation in-between the frame, expanding the insulation to full capacity.

### SUPER STRUCTURE

Cedar Creek's famous, hand-made, ALL aluminum super structures are built on 16" centers (or less), just like your residential home.

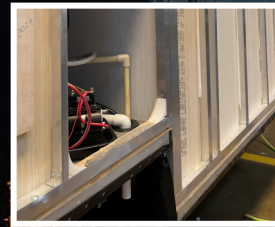
### UNDERBELLY

Each steel frame is covered with a 4'x6' ABS, impact-resistant, waterproof underbelly panel(s).



# SUPERIOR FEATURES

# PEACE-OF-MIND



### SUPERSTRUCTURE

This is Cedar Creek's famous all-aluminum Superstructure on 16" centers!



### BETTER EXTERIOR

"True" Gelcoat exterior features 3M<sup>®</sup> bonded sidewalls and painted front fiberglass cap — no lamination.



### SUPERIOR ROOFING

AlphaPly brand roofing membrane by Alpha Systems comes with a limited lifetime warranty.



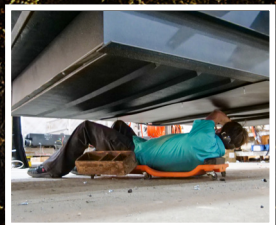
### WIDE BODY

Aluminum roof trusses are heavy-duty and all Cedar Creeks are 101" wide body construction.



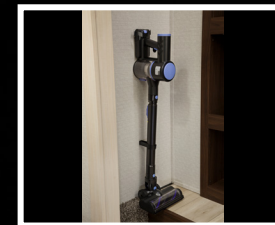
### MODERN BATTERY

Check out our Lithium battery packages are 200X or 460XL by Mastervolt with two or four solar panels.



### UNDERBELLY

Fully covered with 4'x6' ABS removable underbelly panels for easier maintenance.



### CORDLESS VACUUM

Meet all your daily home cleaning demands. Great for vinyl floors and carpet.



### LARGE SHOWER

Our one-piece residential fiberglass shower surround is large and comes with convenient lighting/storage features.



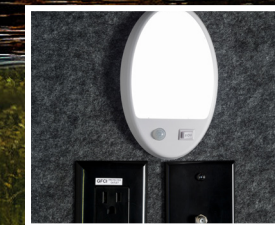
### FLIP-UP BREAKFAST COUNTERTOP

This multi-purpose countertop can be used in a variety of ways.



### YOU'RE IN CONTROL

Add a mobile device to control all functions including, slides, awnings, air conditioners, jacks and dimmer switches.



### SMART LIGHTING

Cedar Creeks feature motion lighting and are located in many convenient places.



### LAUNDRY OPTION

A washer/dryer prep is ideal for this optional side-by-side machine installation.

### EACH NEW FOREST RIVER PURCHASE PROVIDES:

- ✓ Pre-delivery Inspection.
- ✓ Free Membership to Forest River Owners Group (FROG). Learn more at [www.forestriverfrog.com](http://www.forestriverfrog.com).
- ✓ A Contribution to Care Camps Foundation [www.carecamps.org](http://www.carecamps.org).
- ✓ 1 Year Free Roadside Assistance from Date of Purchase.



### LEARN MORE:

Scan this QR code with your mobile device to learn more about Forest River.




All information contained in this brochure is believed to be accurate at the time of publication. However, during any model year, it may be necessary to make changes to the manufacturing process of the units and information in this brochure. Your unit may differ from the information in this brochure due to any changes in the manufacturing process and equipment. Forest River, Inc. reserves the right to make all such changes without notice, including prices, colors, combinations, materials, equipment and specifications of any model as well as the addition of new models and the discontinuance of models shown in this brochure. Therefore, please consult with your Forest River dealer and confirm the availability of any materials, combinations, designs, or specifications that are meaningful to your purchase decision. © 2024 [Range Brand], a Division of Forest River, Inc., a Berkshire Hathaway Company. All Rights Reserved. Forest River, Inc. 10/24



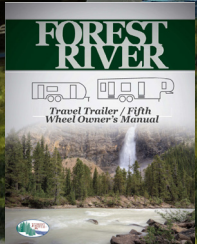
### SPECIFICATION DEFINITIONS:

Scan this barcode using a QR reader on your smartphone to learn RV terminology and more!



**CLICK HERE TO EXPLORE OUR DEALER PORTAL TO FIND A DEALER NEAR YOU**

YOUR [INSERT BRAND] DEALER



OWNER INFORMATION



**NEVER STOP GOING.**