



As you review the information in this package please do not  
hesitate to contact us if you have any questions.

# Table of Contents



## ONE

### Welcome to Fusion Stone

History of Shouldice & Fusion Stone  
Innovation



## TWO

### Great Lakes

Photos  
Specifications  
Colours, Dimensions  
Basic Installation



## THREE

### Dry-Stack

Photos  
Specifications  
Colours, Dimensions  
Basic Installation



## FOUR

### Peninsula Ledgestone

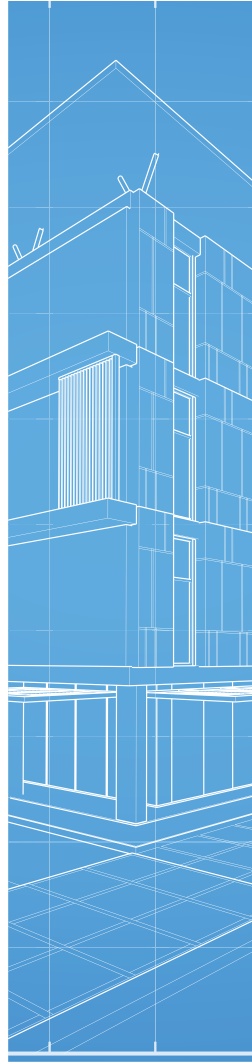
Photos  
Specifications  
Colours, Dimensions  
Basic Installation



## FIVE

### Accessories

Photos  
Specifications  
Colours, Dimensions



## SIX

### Technical Application Guide

Dry-Stack Technical  
Application Guide



## SEVEN

### Environmental Guide



## EIGHT

### Specifications



Proudly manufactured in Canada by Shouldice Designer Stone

281227 Shouldice Block Road, Shallow Lake, Ontario, N0H 2K0 CANADA  
800.265.3174 | [fusion@shouldice.ca](mailto:fusion@shouldice.ca)

**CCMC# 14008-R**



**FUSION**  
STONE

Welcome to Fusion Stone

---



# THE STORY OF **FUSION** STONE



## QUALITY

- **Increases Building Equity**
- **Indoor and Outdoor Application**
- **Easy to Install**
- **Lifetime Guarantee**
- **Affordable**
- **Maintenance Free**
- **Water Repellent**
- **Mould Resistant**
- **8 Beautiful Colours**
- **Use on Any Wall Type**

Fusion Stone Great Lakes fuses together ease of installation, no mortar convenience, a rugged, traditional visual effect, and four colour choices.

"Fusion" is defined as "a merging of diverse, distinct, or separate elements into a unified whole". So it is with Fusion Stone; the coming together of the beauty, strength, and maintenance-free characteristics of traditional stone with the ease of installation and affordability of stone veneer. Truly the best of both worlds.

Fusion Stone is an easy and budget-friendly way to beautifully upgrade a home, inside and out. A patented Shouldice innovation, Fusion Stone is a thin stone veneer that is easily installed with the included stainless steel clips and screws. Just screw it to the wall and it's "Hooked for Life."

Available in three distinct textures, all backed by a Lifetime Guarantee, Fusion Stone can be installed on both new and existing wall assemblies in any weather.



Fusion Stone brings, warmth, richness and a sense of permanence to any environment.



# FAMILY TRADITION AND PRIDE



Feature photo : Steve and Brad Shouldice, 3rd generation owners/operators of Shouldice Designer Stone and developers of Fusion Stone and the patented Fusion Stone mounting system.

The current generation learned the business from a very early age. Above : Rob, Mark, Brad, June & Steve Shouldice. (From left to right)

Right : In 1947 W. B. (Bev) Shouldice and his wife Dorothy incorporated Shouldice Cement Products Limited for the manufacture of Concrete Building Blocks. They set the tone of Quality, Innovation and Service that have been the touchstones of the company ever since.





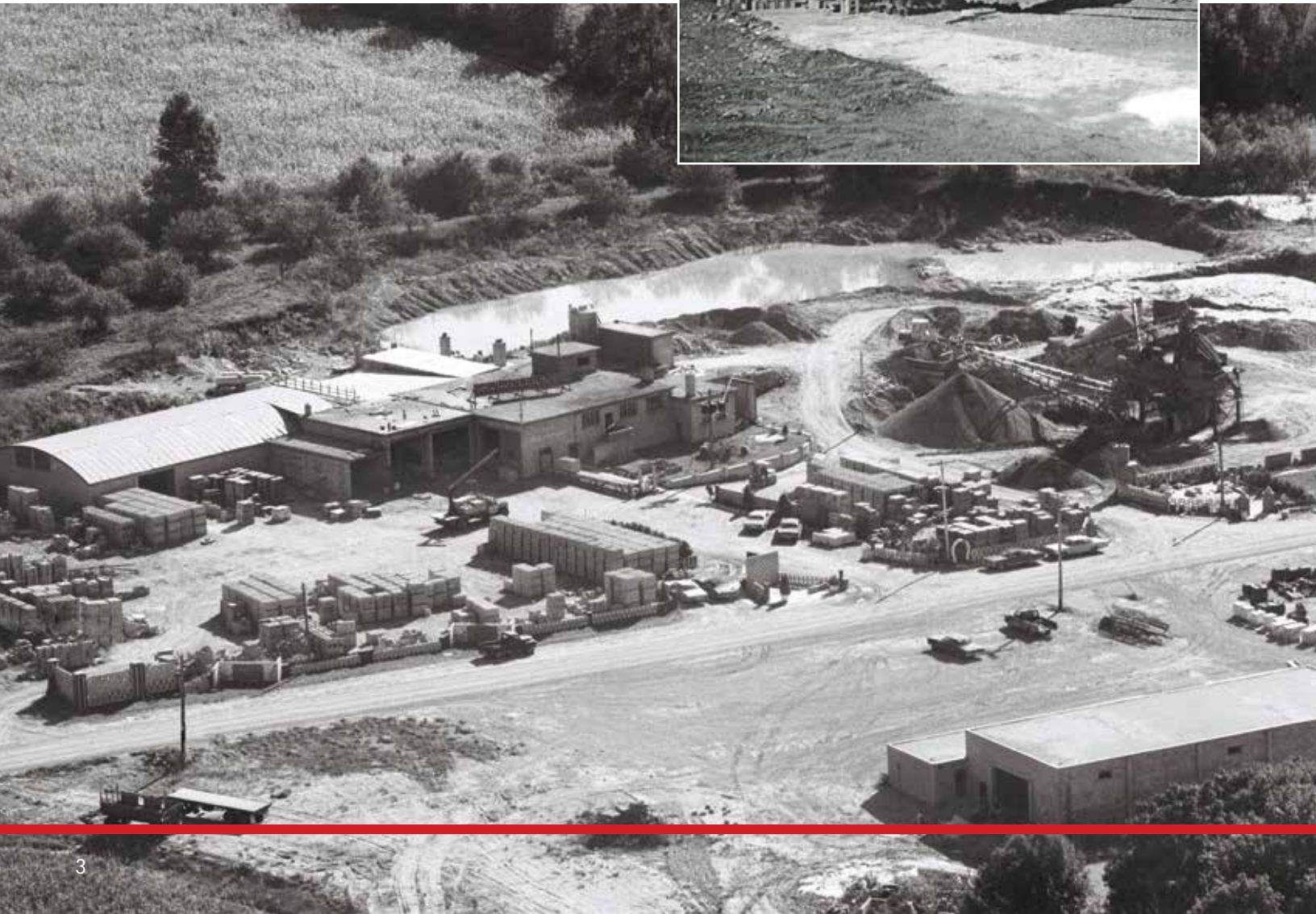
# OUR HISTORY

Fusion Stone is manufactured by Shouldice Designer Stone, a proudly 100% Canadian owned/operated company currently under third generation family management.

Fusion Stone is just one product of a Shouldice history characterized by commitments to Innovation, Quality, and Service. Since 1947 the company has responded to changing times and advancing technologies to develop and produce creative, high-quality products that exceed consumer expectations.

Even in days long past, the Fusion penchant for industry was ever present.

Together with our customer-first orientation, this flexibility has allowed us to establish and maintain a leadership position in the stone and veneer products industry. Our Fusion Stone products are increasingly utilized in institutional, corporate, and residential projects of distinction across the country.

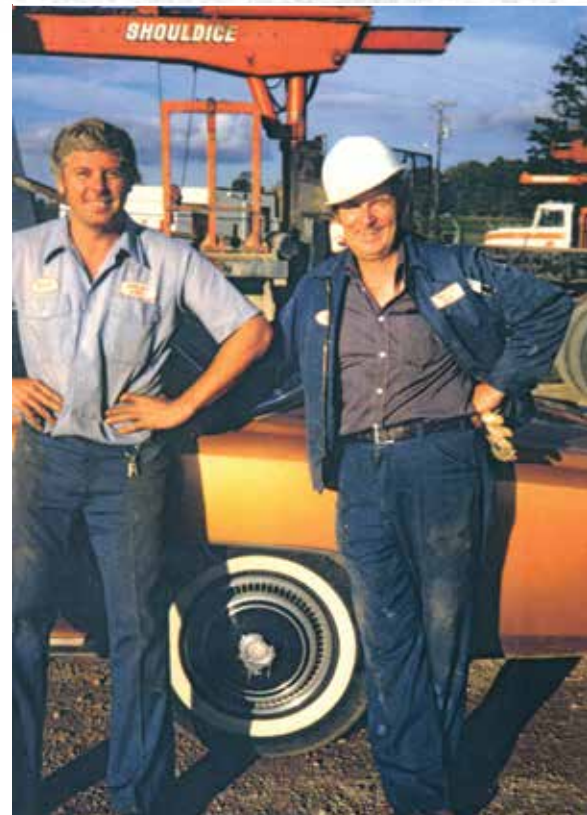




## Over 70 years of dedication to family values and Innovation, Quality, and Service

- » The transformation of standard concrete block into decorative concrete block through the offering of a broad spectrum of solid and blended colours.
- » The introduction of Designer Stone. Modifications to the production process and extensive research and development marked the genesis of our manufactured stone.
- » The introduction of our Architectural Collection complemented the broad spectrum of existing Designer Stone choices. These Architectural Products transformed blocks of concrete into exclusive sizes and shapes for a dynamic expression on all modes of construction.
- » The corporate name of Shouldice Cement Products Limited changed to Shouldice Designer Stone Limited. The new corporate name better reflected the nature of the business as stone profiles came to represent the major portion of sales.
- » The introduction of Fusion Stone, a patented, mechanically fastened system based on thin veneer stone that can be installed on all interior and exterior walls using stainless steel screws and clips. Fusion Stone made masonry practically accessible to the Do-It-Yourself market for the very first time.

Today, after more than 70 years, we take great pride in the products we produce and the wonderful relationships we are privileged to enjoy. We eagerly look forward to another 70 years of Innovation, Quality, and Service.





Thanks to the patented screw and clip mounting system Fusion Stone installation is quick and easy producing professional results every time.

# INNOVATION

In a rapidly and ever changing environment innovation is not only desirable but a survival and growth necessity. Since our founding in 1947 we have purposefully adhered to a strategic commitment to innovation.

Our advanced research and development lab is dedicated to the full time quest for better technologies, better methodologies, better components and better products. This dedication has established us on the leading edge of product development in the stone business.

Our continuing quest for the new and the better has, time and again, brought delighted satisfaction to our many customers. From our unique and comprehensive palette of integral colours, to our wide variety of accessory styles, and the world's 1st mechanically fastened thin stone DIY system, our single-minded goal is to transform your dreams and turn imagination into reality.



## FUSION CLIP SYSTEM

Fusion Stone features a patented system of stainless steel clips and screws that can be installed in any weather on any surface for a lifetime of maintenance free performance.









Proudly manufactured in Canada by Shouldice Designer Stone

281227 Shouldice Block Road, Shallow Lake, Ontario, N0H 2K0 CANADA  
800.265.3174 | [fusion@shouldice.ca](mailto:fusion@shouldice.ca)

**CCMC# 14008-R**



# FUSiON

STONE

---

GREAT LAKES



# 4 GREAT COLOURS INFINITE POSSIBILITIES



Great Lakes is our best-selling Fusion Stone system for a reason. It fuses together ease of installation, no mortar convenience, a rugged, traditional visual effect, and a colour selection you will love. Nothing beats Great Lakes for elegance and utter good looks.

Choose from the distinctive rusty and brown multi-hues of Brindle, the relaxed, subdued tones of beautiful Raven, the contemporary, rich and cloudy overtones of Carbon, or the more subtle resonance of dusky Fawn.







Great Lakes transforms the average into the spectacular both inside and out.



# GREAT LAKES SPECIFICATIONS

## UNIT DIMENSIONS



SPECIFICATIONS	STONE	CORNER STONE
THICKNESS	1" TO 2"	1" TO 2"
HEIGHT	5"	5"
LENGTH	8", 12" & 20"	8" & 12"
RETURN	N/A	4"

## AVAILABLE COLOURS



**BRINDLE**



**RAVEN**



**FAWN**



**CARBON**

If you are interested in receiving a sample please call 800.265.3174.



# GREAT LAKES INSTALLATION

Besides a luxurious, rugged and traditional profile available in four distinctive colour selections Great Lakes has the added benefit of mortar-free installation. This means no mess and a quick start to finish project time. Curb appeal is assured with Great Lakes as is a rich and refined touch to any project.

## **PATENTED DIY CLIP SYSTEM**

Fusion Stone features a patented system of stainless steel clips and screws that can be installed in any weather by anyone for a lifetime of maintenance free performance.





# SIMPLE, CONSISTENT EXECUTION

## INSTALLATION OVERVIEW

### Prepare the Surface

Fusion Stone is installed over a plywood or OSB substrate. Ensure that the substrate has been covered in a code approved, breathable, weather resistant barrier. Not required on interior installations.



### Install the Starter Strip

Starter Strips are used at the base of all jobs as well as above any openings (windows and doors). Level and install the Starter Strips using the stainless steel screws provided.





**FOR FLAWLESS DELIVERY OF YOUR  
AESTHETIC VISION EVERYTIME.**

## **Complete Corner Install**

Begin installing Fusion Stone at the corner. As you build the corner ensure that you alternate short and long sides.



## **Continue Stone Installation**

Continue to lay the stone in the pattern described in the detailed instructions. The last stone installed on every row may need to be cut to length.







Proudly manufactured in Canada by Shouldice Designer Stone

281227 Shouldice Block Road, Shallow Lake, Ontario, N0H 2K0 CANADA  
800.265.3174 | [fusion@shouldice.ca](mailto:fusion@shouldice.ca)

**CCMC# 14008-R**



# FUSION

STONE

545

---

DRY-STACK



# SIMPLE ELEGANCE



CARAMEL



CHARCOAL

Dry-Stack Fusion Stone derives its name from the innovative feature of no mortar installation that translates into the much valued benefit of an easy, no mess application.

Dry-Stack produces an amazingly uniform and highly finished appearance to be admired for a lifetime. The self-defining Caramel and Charcoal colour selections are difficult to choose between but both offer stunning nuances of discriminating good taste.

---

Dry-Stack is a superb choice as an accent or for a complete project both inside and out.





The low profile finish characteristic of Dry-Stack presents a beautiful balance between contemporary appeal and traditional integrity.



# DRY-STACK SPECIFICATIONS

## UNIT DIMENSIONS



SPECIFICATIONS	STONE	CORNER STONE
THICKNESS	32mm	32mm
HEIGHT	95mm & 190mm	95mm & 190mm
LENGTH	130mm TO 390mm	220mm
RETURN	N/A	90mm

## AVAILABLE COLOURS



**CARAMEL**



**CHARCOAL**

If you are interested in receiving a sample please call 800.265.3174.

# DRY-STACK INSTALLATION

The benefit of a modern, highly finished appearance, characteristic of Dry-Stack, is complemented by the no mess, easy application appeal of a no mortar installation. Two colour choices that coordinate well with almost any background or associated material complete a picture of design perfection.

## PATENTED DIY CLIP SYSTEM

Fusion Stone features a patented system of stainless steel clips and screws that can be installed in any weather by anyone for a lifetime of maintenance free performance.





# SIMPLE, CONSISTENT EXECUTION

## INSTALLATION OVERVIEW

### Prepare the Surface

Fusion Stone is installed over a plywood or OSB substrate. Ensure that the substrate has been covered in a code approved, breathable, weather resistant barrier. Not required on interior installations.



### Install the Starter Strip

Starter Strips are used at the base of all jobs as well as above any openings (windows and doors). Level and install the Starter Strips using the stainless steel screws provided.





**FOR FLAWLESS DELIVERY OF YOUR  
AESTHETIC VISION EVERYTIME.**

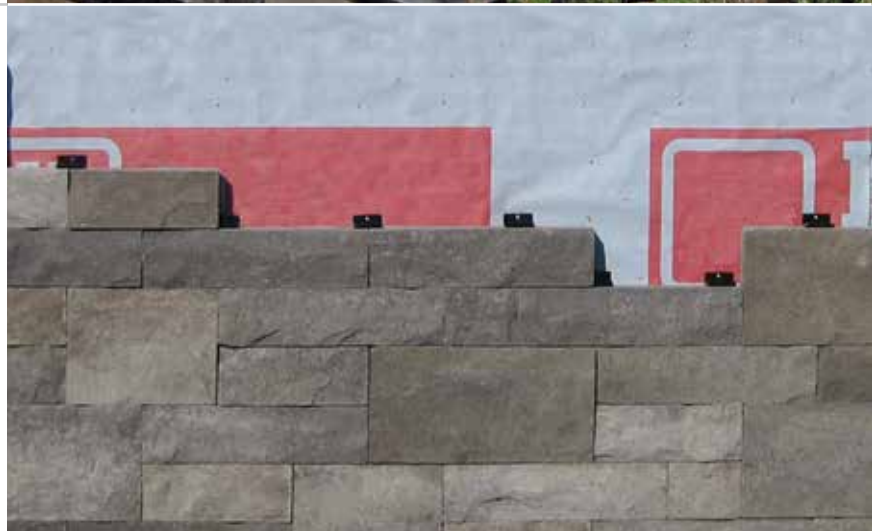
## **Complete Corner Install**

Begin installing Fusion Stone at the corner. As you build the corner ensure that you alternate short and long sides.



## **Continue Stone Installation**

Continue to lay the stone in the pattern described in the detailed instructions. The last stone installed on every row may need to be cut to length.







Proudly manufactured in Canada by Shouldice Designer Stone

281227 Shouldice Block Road, Shallow Lake, Ontario, N0H 2K0 CANADA  
800.265.3174 | [fusion@shouldice.ca](mailto:fusion@shouldice.ca)

**CCMC# 14008-R**



**FUSION**  
STONE

---

**PENINSULA LEDGESTONE**





# A MODERN STATEMENT

Peninsula Ledgestone has been designed to satisfy those looking for a more contemporary look in stone veneer.

Available in two modern colour choices, Peninsula Ledgestone is the perfect way to make an up-to-date statement with the traditional strength and appeal of stone.



CYPRUS



GROTTO



Cyprus features light sandy tones with occasional appearances of contrasting darker elements. Perfect for fireplaces, feature walls, columns and pillars!





# PENINSULA LEDGESTONE SPECIFICATIONS

## UNIT DIMENSIONS



SPECIFICATIONS	STONE	CORNER STONE
THICKNESS	1.25"	1.25"
HEIGHT	10"	10"
LENGTH	20"	6", 12", 18"
RETURN	N/A	1.25"

## AVAILABLE COLOURS



CYPRUS



GROTTO

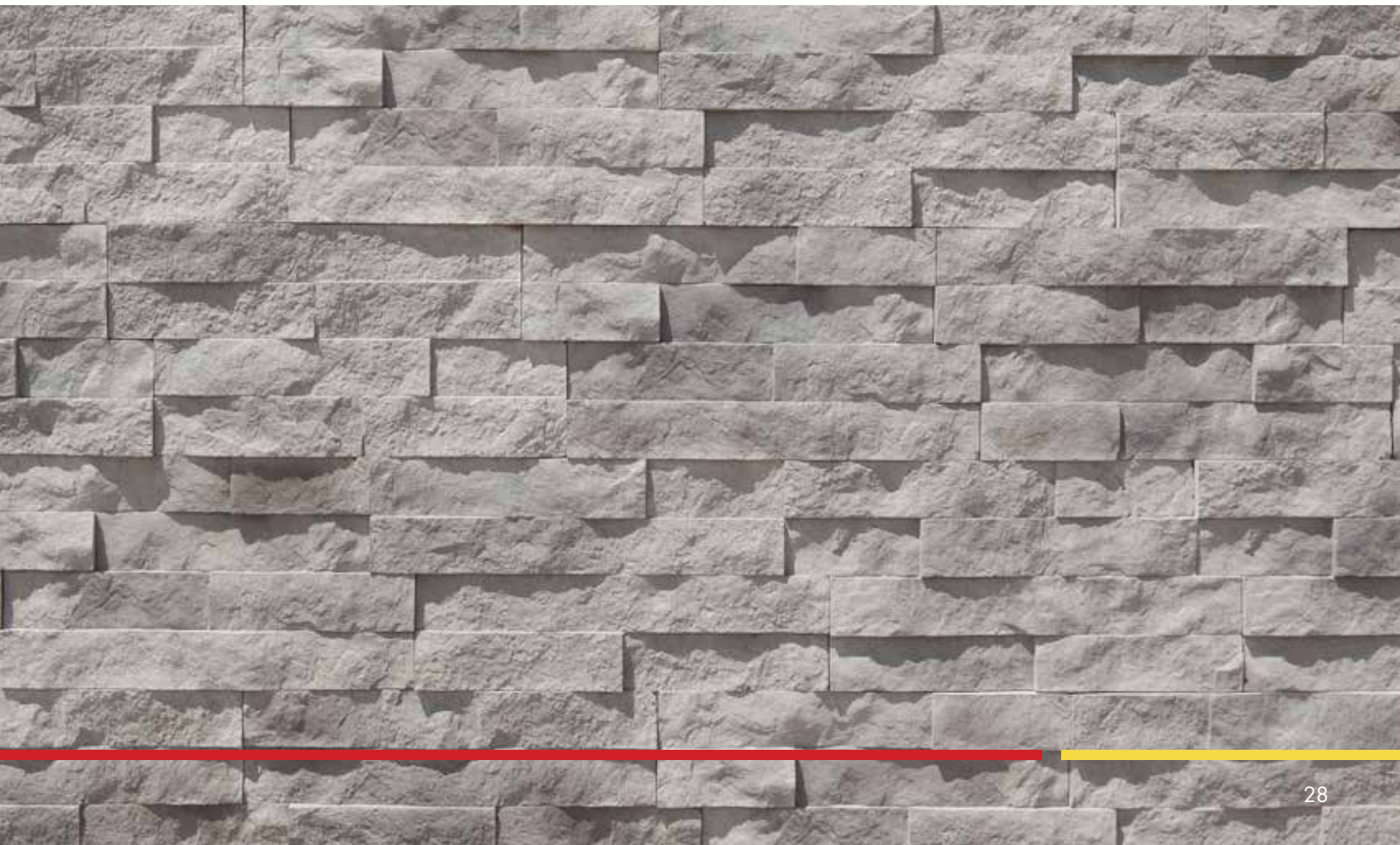
If you are interested in receiving a sample please call 800.265.3174.

# PENINSULA LEDGESTONE INSTALLATION

The benefit of a modern, highly finished appearance, characteristic of Peninsula Ledgestone, is complemented by the no mess, easy application appeal of a no mortar installation. Two colour choices that coordinate well with almost any background or associated material complete a picture of design perfection.

## **PATENTED DIY CLIP SYSTEM**

Fusion Stone features a patented system of stainless steel clips and screws that can be installed in any weather by anyone for a lifetime of maintenance free performance.





# SIMPLE, CONSISTENT EXECUTION

## INSTALLATION OVERVIEW

### Prepare the Surface

Fusion Stone is installed over a plywood or OSB substrate. Ensure that the substrate has been covered in a code approved, breathable, weather resistant barrier. Not required on interior installations.



### Install the Starter Strip

Starter Strips are used at the base of all jobs as well as above any openings (windows and doors). Level and install the Starter Strips using the stainless steel screws provided.





**FOR FLAWLESS DELIVERY OF YOUR  
AESTHETIC VISION EVERYTIME.**

## **Complete Corner Install**

Begin installing Fusion Stone at the corner. As you build the corner ensure that you alternate short and long returns on the wall.



## **Continue Stone Installation**

Continue to lay the stone in the pattern described in the detailed instructions. The last stone installed on every row may need to be cut to length.







Proudly manufactured in Canada by Shouldice Designer Stone

281227 Shouldice Block Road, Shallow Lake, Ontario, N0H 2K0 CANADA  
800.265.3174 | [fusion@shouldice.ca](mailto:fusion@shouldice.ca)

**CCMC# 14008-R**



# FUSION STONE

---

## ACCESSORIES



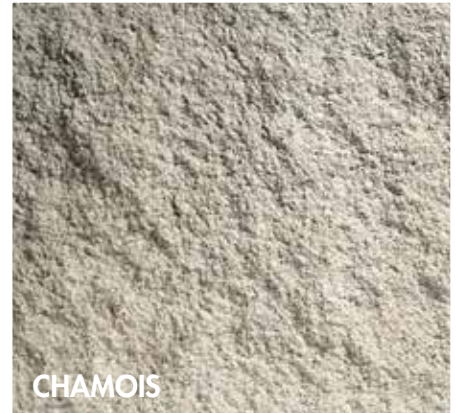
# THE RIGHT ACCESSORIES

With fashion of all descriptions the difference between beautiful and truly stunning is very often dependent upon the accessories. The appropriate accent or finishing touch completes the picture and leaves nothing more to be said beyond "That's amazing!"

Fusion Stone accessories provide you with item, style and colour options that are the perfect complement to your Great Lakes, Dry-Stack or Peninsula Ledgestone.



COCOA



CHAMOIS



ASH







Fusion Stone accessories finish the job professionally with style and distinction.



# ACCESSORIES SPECIFICATIONS

## UNIT DIMENSIONS



### STENCIL STONE 7 1/2" X 15 3/8"

THICKNESS	1 1/4" (32mm)
HEIGHT	7 1/2" (190mm)
LENGTH	15 3/8" (390mm)
WEIGHT	13.5LBS
COLOUR(S)	CHAMOIS
PIECES PER CUBE	N/A

### STENCIL STONE 10" X 16"

THICKNESS	2"
HEIGHT	10"
LENGTH	16"
WEIGHT	22LBS
COLOUR(S)	ASH / COCOA
PIECES PER CUBE	N/A



### STENCIL STONE 5" X 12"

THICKNESS	2"
HEIGHT	5"
LENGTH	12"
WEIGHT	9LBS
COLOUR(S)	ASH / COCOA
PIECES PER CUBE	N/A

## UNIT DIMENSIONS



ROCK SILL	
THICKNESS	2 1/2"
HEIGHT	3 1/2"
LENGTH	24"
WEIGHT	18LBS
COLOUR(S)	CHAMOIS
PIECES PER CUBE	144



SLOPED SILL	
THICKNESS	3"
HEIGHT	2 1/2"
LENGTH	20"
WEIGHT	9LBS
COLOUR(S)	ASH / COCOA
PIECES PER CUBE	168

# THE RIGHT ACCESSORIES WILL TAKE YOUR PROJECT FROM GOOD TO GREAT!

You will be glad to know that you have accessory options with Fusion Stone. There is a Fusion Stone accessory that is just right to meet not only your needs but your desires as well.





# ACCESSORIES SPECIFICATIONS

## UNIT SPECIFICATIONS



RECTANGLE BOX	
THICKNESS	2"
HEIGHT	10"
LENGTH	8"
WEIGHT	9LBS
COLOUR(S)	ASH / COCOA
PIECES PER CUBE	N/A

ROUND BOX	
THICKNESS	2"
HEIGHT	10"
LENGTH	8"
WEIGHT	9LBS
COLOUR(S)	ASH / COCOA
PIECES PER CUBE	N/A



HEARTHSTONE	
THICKNESS	2"
HEIGHT	16"
LENGTH	20"
WEIGHT	43LBS
COLOUR(S)	ASH / COCOA
PIECES PER CUBE	N/A

# ADDITIONAL HARDWARE & MATERIALS

## UNIT DIMENSIONS



### STARTER STRIP

PACKAGE	100 PIECES
LENGTH	48"
MATERIAL	STAINLESS STEEL



### CLIPS AND SCREWS

MATERIAL	STAINLESS STEEL
PACKAGE	25 PIECES

Every Fusion Stone order is packaged with enough clips and screws to complete installation. In the event that you require additional clips, you may order more through your Fusion Stone dealer.





Proudly manufactured in Canada by Shouldice Designer Stone

281227 Shouldice Block Road, Shallow Lake, Ontario, N0H 2K0 CANADA  
800.265.3174 | [fusion@shouldice.ca](mailto:fusion@shouldice.ca)

**CCMC# 14008-R**





# FUSION

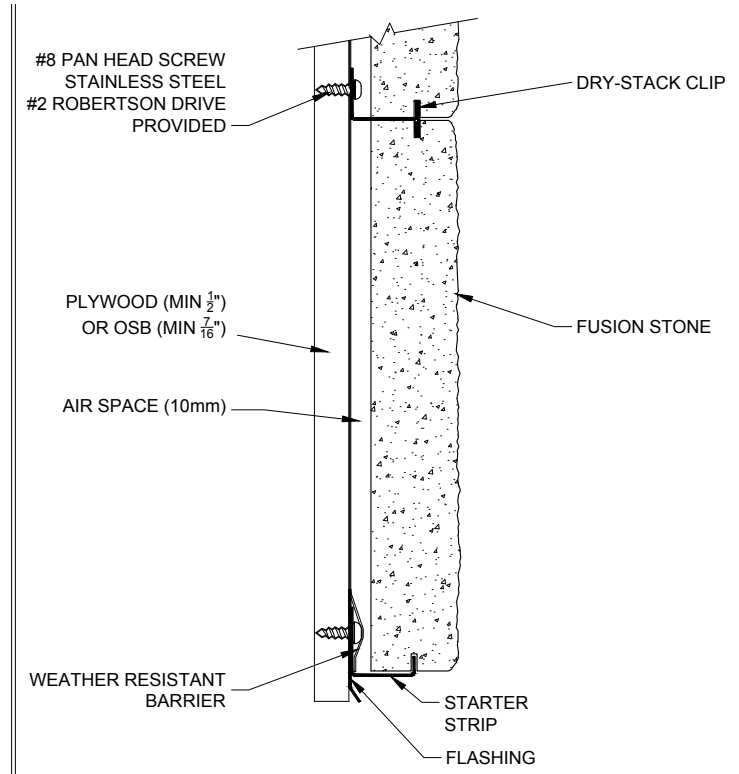
STONE

---

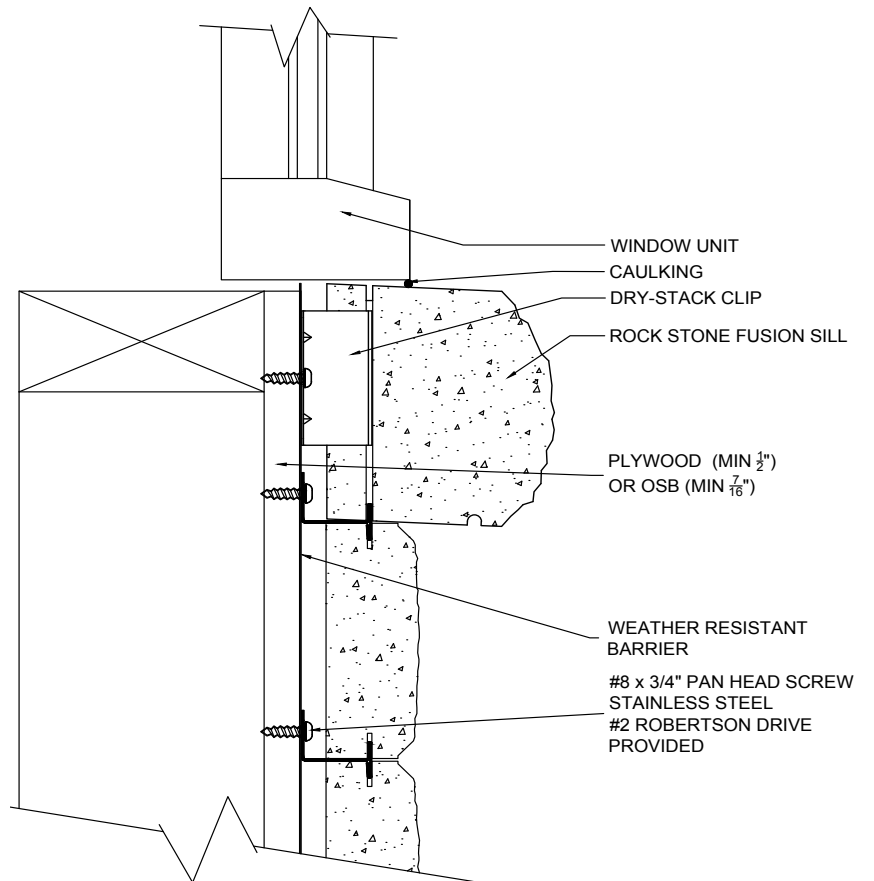
## DRY-STACK TECHNICAL APPLICATION GUIDE

# DRY-STACK TECHNICAL APPLICATION GUIDE

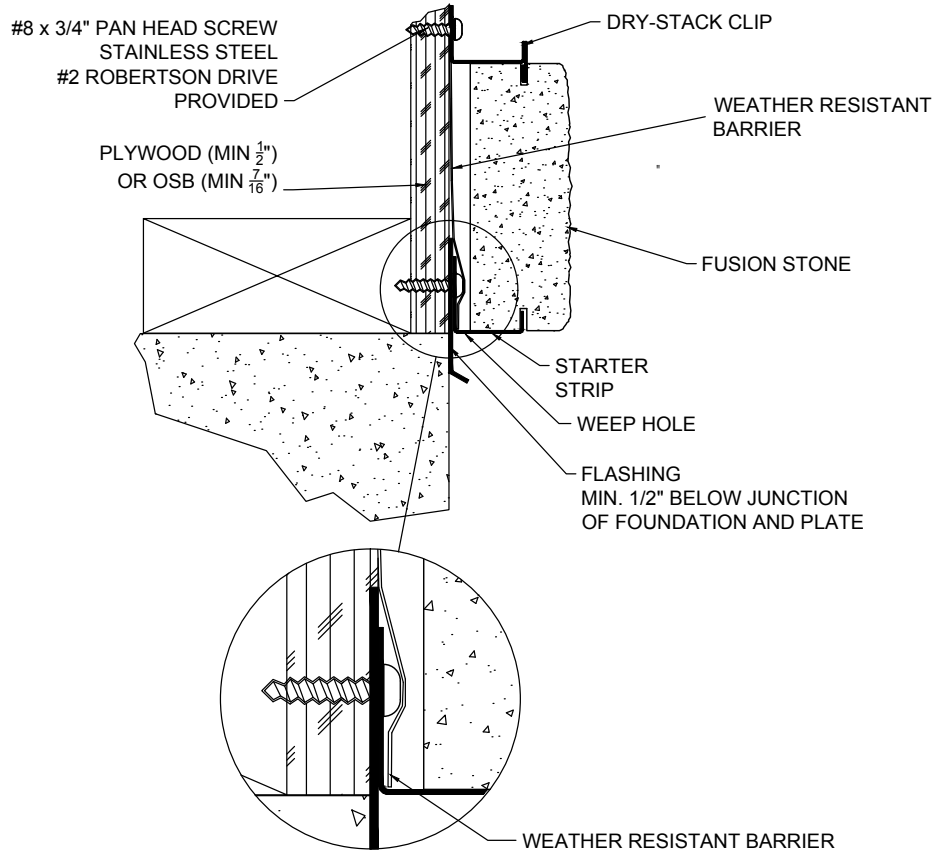
Typical Cross Section of Veneer Mounting System



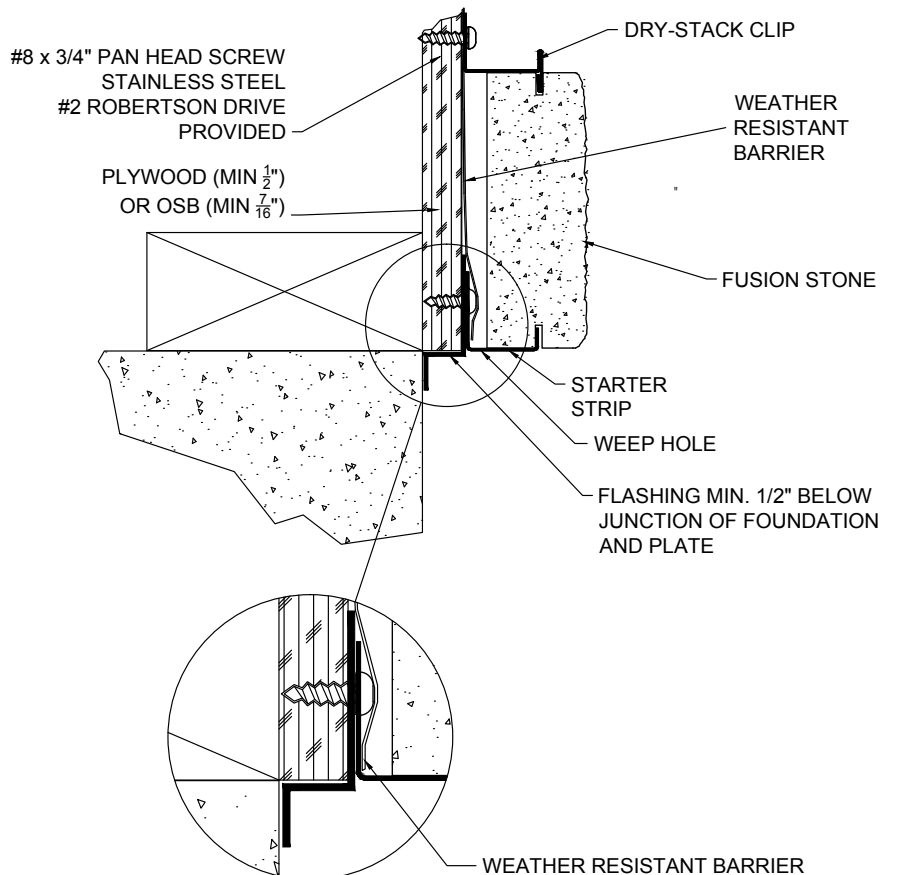
Typical Cross Section of Window / Door Sill



Typical Cross Section  
Type 1 Sheathing  
Flush w/ Foundation

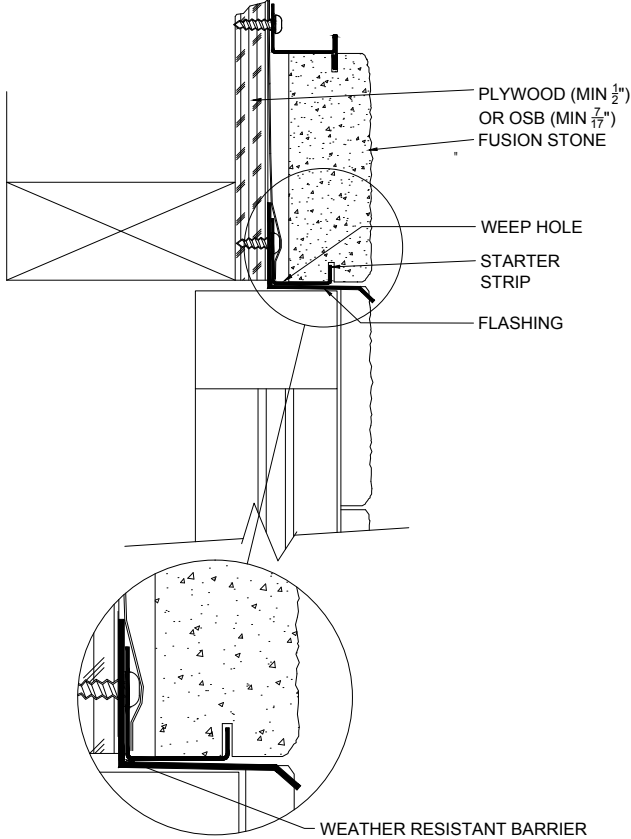


Typical Cross Section  
of Veneer Mounting System

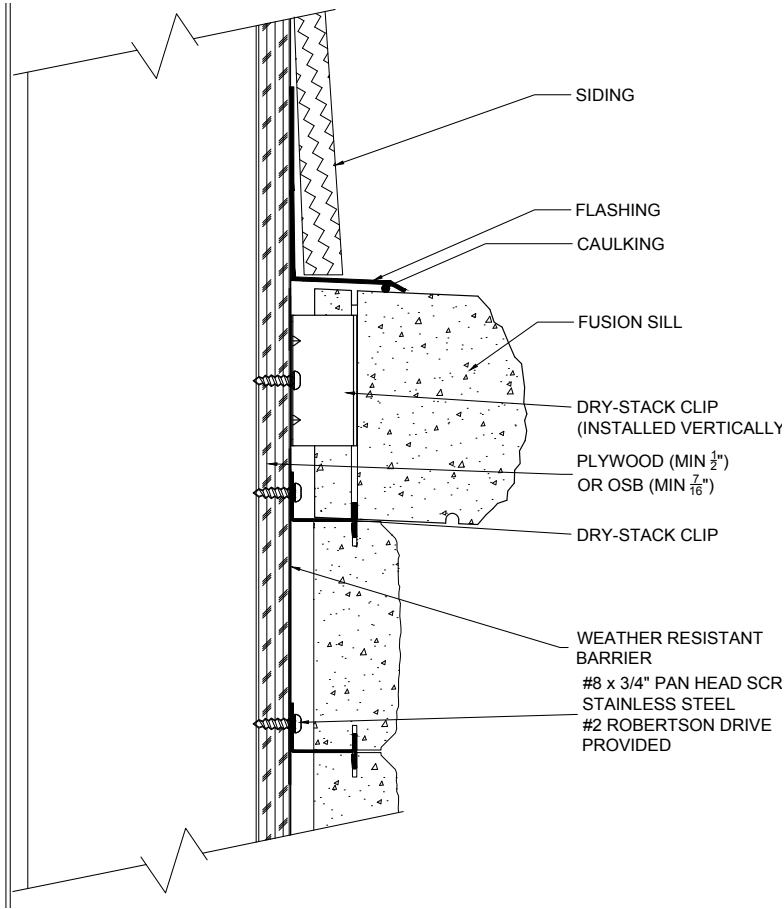




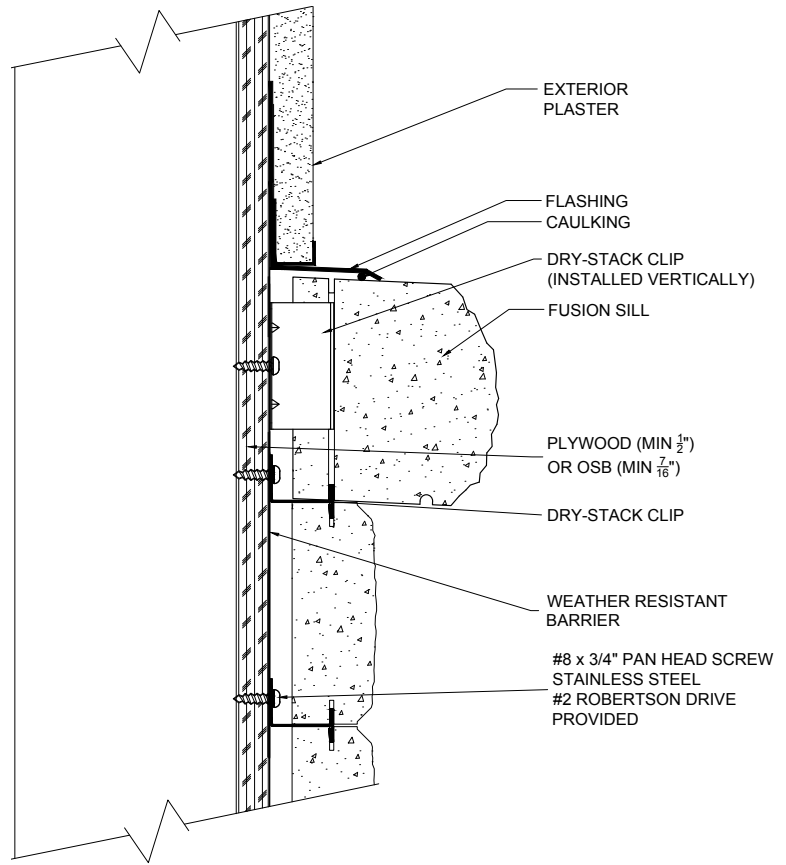
Typical Cross Section  
Window / Door Header



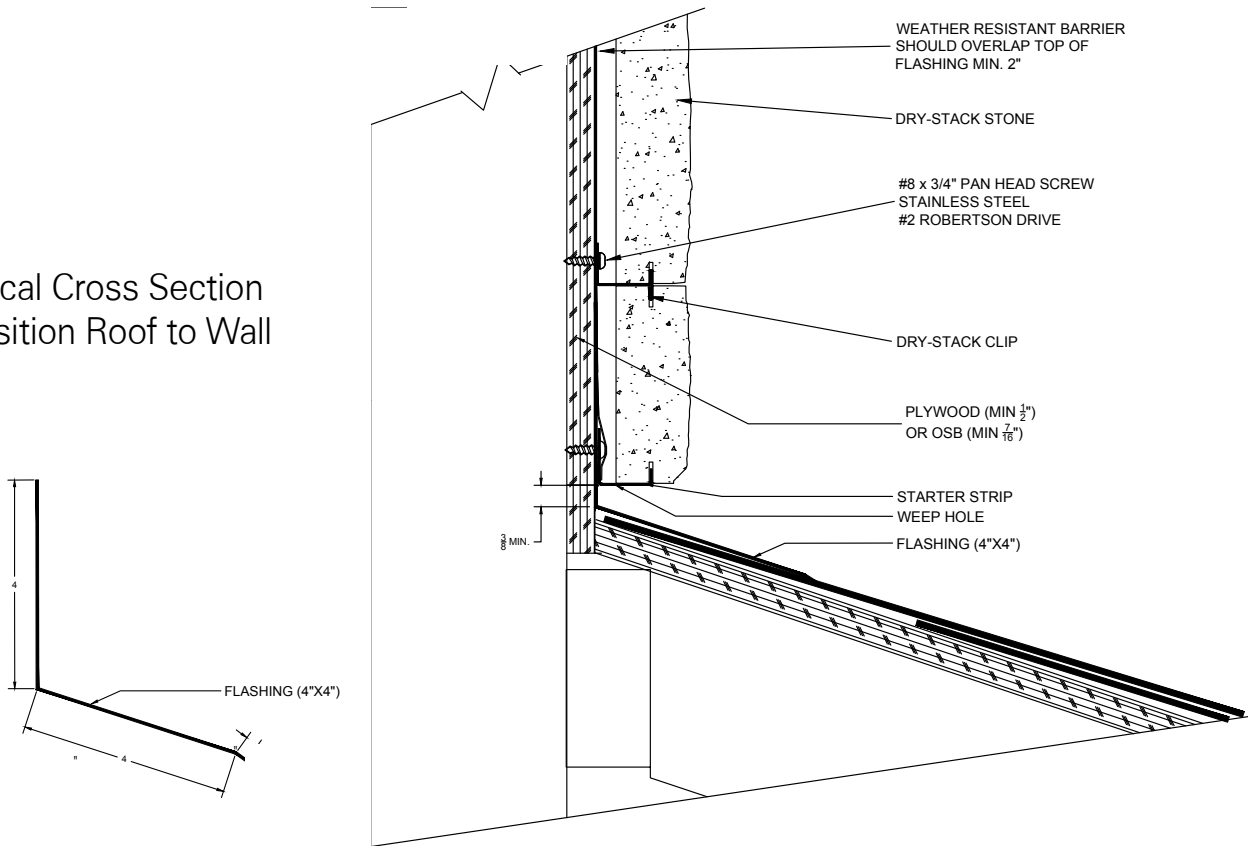
Typical Cross Section  
Wainscot Sill Transition to Siding



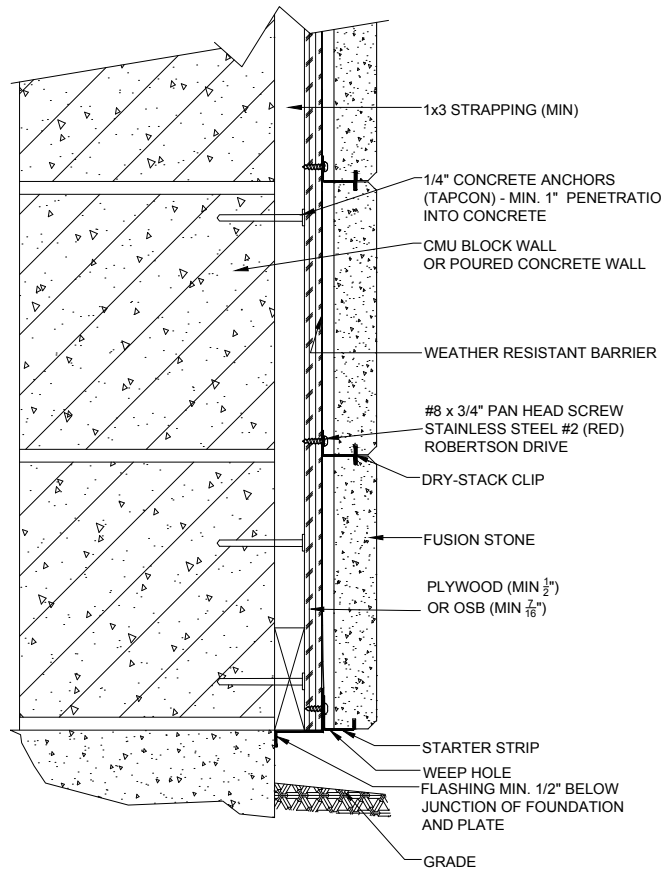
Typical Cross Section  
Wainscot Sill Transition to Stucco



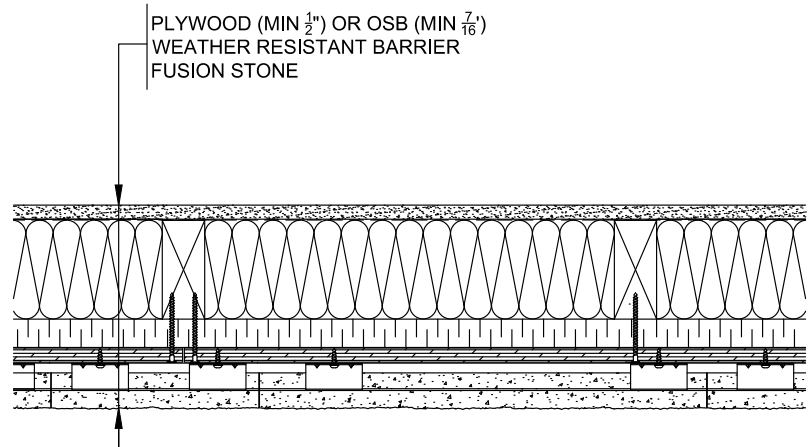
Typical Cross Section  
Transition Roof to Wall



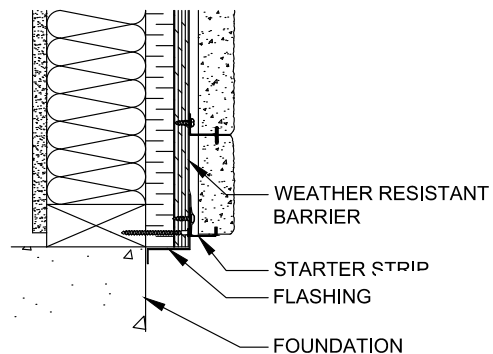
Typical Cross Section  
Concrete Block / Poured Cap



Typical Cross Section  
Wood Stud Wall  
Section with Rigid Insulation



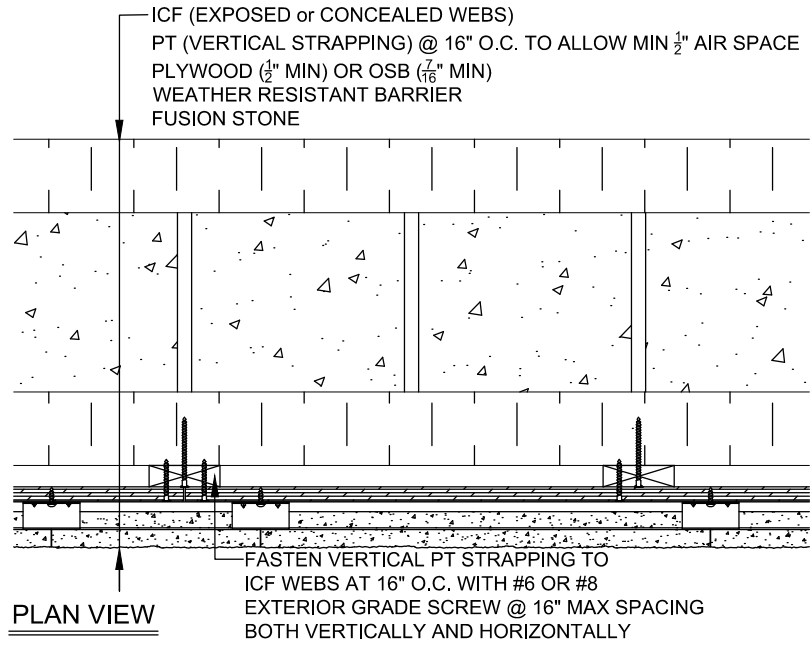
PLAN VIEW



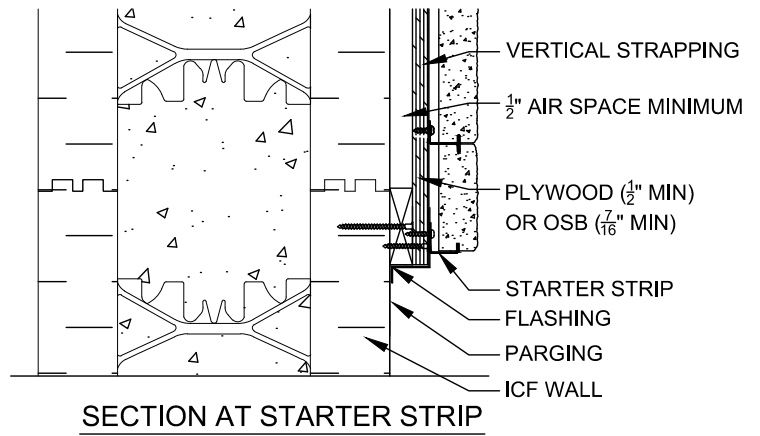
SECTION AT STARTER STRIP



Typical Cross Section  
ICF Wall - Plan View



Typical Cross Section  
ICF Wall - Section View at  
Starter Strip





Proudly manufactured in Canada by Shouldice Designer Stone

281227 Shouldice Block Road, Shallow Lake, Ontario, N0H 2K0 CANADA  
800.265.3174 | [fusion@shouldice.ca](mailto:fusion@shouldice.ca)

**CCMC# 14008-R**



**FUSION**  
STONE

**ENVIRONMENTAL GUIDE**



# LEED ENVIRONMENTAL CERTIFICATION

Fusion Stone manufacturers Stone Products that support the principles of LEED with raw materials, production, life cycle costing and performance. The benefits of additional durability, design and economic efficiency are an integral component in every piece of Fusion Stone.

## What is LEED?

Leadership in Energy and Environmental Design (LEED) is a rating system devised by the United States Green Building Council (USGBC) to evaluate the energy & environmental performance of buildings and encourage market transformation to sustainable design. Detailed information on the LEED program is available at [www.usgbc.org](http://www.usgbc.org) where the program outlines the intent, strategies, requirements and technologies required. Information on LEED Canada is available from the Canada Green Building Council at [www.cagbc.org](http://www.cagbc.org)

## What is the Goal of LEED?

LEED's overall goals are to improve occupant well-being, environmental impacts and economic returns of new buildings.

## LEED Certification Points

Fusion Stone products are governed by LEED NC that provides a checklist of prerequisites and voluntary credits in six basic categories: sustainable sites (SS), water efficiency (WE), energy and atmosphere (EA), materials and resources (MR), indoor/environmental quality (EQ) and innovation and design (ID). Projects earn points by meeting technical requirements specific to LEED NC 2.2 (US) or LEED NC 1.0 (CAN).

## Why use Concrete Masonry?

Fusion Stone products support the principles of green management and by using Shouldice concrete masonry you will contribute to earning LEED points in the LEED credit categories.

The aggregates used to produce Shouldice stone products are manufactured from the natural reserves of stone that Mother Nature created millions of years ago. These resources are processed to an aggregate that is blended with recycled reserves, cement, iron oxide colours and stabilizing ingredients to create a stone product that rivals the beauty of natural stone with a guaranteed lifetime of performance."

## The Top 10 LEED Benefits

1. The Mass Factor for Energy Performance (EA) Credit 1
2. Construction Waste Management (MR) Credits 2.1 & 2.2
3. Recycled Content (MR) Credits 4.1 & 4.2
4. Local/Regional Material Use (MR) Credits 5.1 & 5.2
5. Durable Building (MR) Credit 8
6. Flexible by Design (ID) Credit 1.x
7. Fire Resistance (ID) Credit 1.x
8. Buildings with Minimal Maintenance (ID) Credit 1.x
9. Resource Protection (ID) Credit 1.x
10. Designed for Disassembly (I D) Credit 1.x

## Fusion Stone

The natural resources used to produce Fusion Stone are blended with ingredients in state of the art manufacturing complexes that create stone products which may be used not only above grade but at grade and below grade when required. The integral quality of Fusion Stone allows this

unrestricted use, a factor that is not always available from other manufactured stone producers. Fusion Stone is manufactured with the same composition of materials that are used in load bearing high-rise construction, bridge overpasses and every construction project demanding strength and performance. This is proof of the integral quality and value of Fusion Stone, a product that performs and replicates stone in every sense of the word and potentially contributes to the following sustainable LEED attributes:

## **The Mass Factor for Energy Performance**

(EA) Credit 1 (Points 1-10)

The weight of Fusion Stone provides a mass factor that absorbs the ambient air temperature and releases this stored energy throughout the day or night. This energy performance results in heating and cooling cost savings.

## **Waste Management** (MR) Credits 2.1 & 2.2 (Points: 2)

The manufacturing process utilizes advanced technology for absolute control during production. Capture, treatment and recycling provides minimal impact on the environment and all Fusion Stone may be crushed and recycled during manufacture or anytime during the life of the stone. Job-site efficiency is realized with the components of Fusion Stone being modular by design for minimal jobsite treatment needs in cutting, shaping or trimming.

## **Recycled Content** (MR) Credits 4.1 & 4.2 (Points: 2)

Fusion Stone is manufactured with the maximum percentage of re-cycled raw materials that will not affect the quality of the Stone. There are no toxic emissions and all excess water is treated and reused.

## **Local/Regional Material Use**

(MR) Credits 5.1 & 5.2 (Points: 2)

All natural aggregates used are from sources and reserves located at the manufacturing complexes which are some of the most natural and pure deposits in the world. This single source of quality raw materials provides a guarantee

of consistent quality wherever the stone is used. The major North American markets for Fusion Stone are within 500 (800km) miles by road or 1500 miles (2400km) by rail.

## **Durable Building** (MR) Credit 8 (Points: 1)

The durability of stone combined with a system including drainage cavities and durable fasteners results in a long service life for the building envelope.

## **Innovative Design** (ID) Credits

(Points: 1-4; Max. Points in ID Category are 4)

The modular components of all Fusion Stone products allows their use on intricate designs with the synergy of reducing additional load bearing structural capacity. Architectural expression without comparison along with the Fusion Stone guarantee and a lifetime warranty are without equal in the industry.

## **Fire Resistance** (ID) Credit (Points: 1)

Fusion Stone will not burn ... period! This results in additional safety for occupants and protection from external fire hazards.

## **Buildings with Minimal Maintenance**

(ID) Credit (Points: 1)

Fusion Stone quality allows application without restriction and this integral quality provides a lifetime of performance with minimal if any maintenance required.

## **Resource Protection** (ID) Credit (Points: 1)

The natural ingredients of Fusion Stone are inert (neutral) by design and have minimal impact on the environment.

## **Designed for Disassembly** (ID) Credit (Points: 1)

Fusion Stone is an innovative thin stone system installed with stainless steel clips and screws allowing disassembly with common power tools.



Proudly manufactured in Canada by Shouldice Designer Stone

281227 Shouldice Block Road, Shallow Lake, Ontario, N0H 2K0 CANADA  
800.265.3174 | [fusion@shouldice.ca](mailto:fusion@shouldice.ca)

**CCMC# 14008-R**





**FUSION**  
STONE

---

**SPECIFICATIONS**

# QUALITY

Producing a consistently high quality product doesn't happen by chance. Fusion Stone has become the premier choice of architects, designers, contractors, masons, corporations, and homeowners who are looking for the very best this industry has to offer.

Choosing Fusion Stone quality fulfills your dreams with not only lasting beauty but also real world investment value. There is nothing like stone to enhance the beauty of a home or to make a statement about your good taste, your consideration for future sustainability and your financial wisdom.

There are many things that contribute to our guarantee of high quality standards:

- We operate a full time quality control department dedicated to ensuring that our customers have only products of the highest quality with which to satisfy their creative desires.
- Operating from a single manufacturing facility provides us with comprehensive control over all aspects of the manufacturing process.
- Our state-of-the-art technology and equipment ensure Fusion Stone is produced only to highest quality standards that our customers can trust with absolute confidence.
- We have access to a very large supply of what is regarded as the best quality aggregate in the country. This not only guarantees quality but also consistency between colour lots.
- We are proud of our craftsmen that have decades of experience in meeting the exacting standards of architects and homeowners wishing to reflect their professional or personal creative visions.



---

The combination of our stone and your professional installer enhance your investment value with stunning curb appeal. We are always happy to provide advice and recommendations for expert installation services appropriate to your particular needs.



# A LIFETIME OF PERFORMANCE

Since 1947 Shouldice Designer Stone has responded to changing times and advancing technologies to develop and produce creative, high-quality products that exceed consumer expectations.

Fusion Stone is evidence of how this philosophical ideal has been transformed into a line of products that clearly places our customers first and foremost in mind. Fusion Stone offers more than several beautiful style and colour choices and a patented system ensuring ease of installation.

The list to the right demonstrates how the things you can't see are as much a part of Fusion Stone as the things you can see. Together they create an unassailable fusion of product integrity, security and a lifetime of performance!

## Exceeds Code

Fusion Stone is manufactured to exceed code standards of the CSA Standard A23.4 & the ASTM C1364-17 Specifications.

**INCREASES BUILDING EQUITY**

**LIFETIME GUARANTEE**

**MAINTENANCE FREE**

**SOUND PROTECTION**

**FIRE PROTECTION**

**WATER REPELLENT**

**MOULD RESISTANT**





# SERVICE

Service is what gives real meaning and value to our customers from our commitment to Innovation and Quality. We strive everyday to ensure that our customers benefit from the innovative and unsurpassed quality, beauty, and range of Fusion Stone products by providing an equally high level of customer service.

You can pursue your design aspirations with confidence, knowing that we are here to support, advise and so much more. We are the only coast-to-coast, full service, comprehensive masonry manufacturer/supplier in North America. We manufacture, sell and ship from a single location. As a result, we can guarantee product quality, colour consistency, and reliable delivery. As well, we can satisfy virtually all supply requirements including those of national commercial customers such as large retail chains.

Fusion Stone offers the industry's most extensive and comprehensive line of stone products, accents and accessories. We provide a range of full bed depth, load bearing and thin stone solutions to satisfy virtually any application requirement. There need be no limits to your inspirational or aspirational motivations.



# A LIFETIME GUARANTEE



The strongest attribute Fusion Stone products possess is the lifetime guarantee. Your complete satisfaction is very important and that commitment is reflected in our guarantee. We guarantee for life the structural, aesthetic and performance integrity of Fusion Stone products.

A guarantee of strength and performance on all Fusion Stone products is provided when used on structures that conform to local building codes and when installed in accordance to installation guidelines. Any product that proves defective will be replaced without cost, excluding labour.

The warranty does not cover what we have no control over, namely building settlement, wall movement, contact with chemicals and airborne contaminants that may cause staining or colour changes to the product.



# FUSION STONE SPECIFICATIONS

## A. PRODUCT:

- 1.0 Mechanically Fastened Masonry for Residential, Commercial, Institutional
- 1.1 Masonry Units shall be manufactured by:  
Shouldice Designer Stone:  
Shallow Lake, ON NOH 2K0  
Tel: 1-800-265-3174 | [www.fusionstone.ca](http://www.fusionstone.ca)
- 1.2 Masonry Units are CCMC 14008-R
- 1.3 Ontario Minister's Ruling MR2015-02
- 1.4 Manufacturer shall supply test data to support specifications requirements.
- 1.5 Part 4 of NBCC-05 & Part 9 of NBCC-05
- 1.6 CSA S304.1 Annex A
- 1.7 Units shall be manufactured with an integral water repellent additive.
- 1.8 Units are manufactured concrete varying from both dry-cast and wet-cast processes.
- 1.9 Starter Strip, Clips and Screws are Stainless Steel.
- 2.0 Application
- 2.1 Units shall be used for \_\_\_\_\_
- 3.0 Shapes and Sizes
- 3.1 Great Lakes Stone \_\_\_\_\_
- 3.2 Colour \_\_\_\_\_
- 3.3 Peninsula LedgeStone \_\_\_\_\_
- 3.4 Colour \_\_\_\_\_
- 3.5 Dry-Stack Stone \_\_\_\_\_
- 3.6 Colour \_\_\_\_\_
- 3.7 Sill \_\_\_\_\_
- 3.8 Colour \_\_\_\_\_
- 3.9 Accessories \_\_\_\_\_

### Spec. Note:

A: Please refer to [www.fusionstone.ca](http://www.fusionstone.ca) for Profiles, Sizes and Colours.

- 4.0 Appearance
- 4.1 Units shall be uniform and consistent in colour.
- 4.2 Refer to drawings for unit option(s) locations and quantities.
- 5.0 Weight
- 5.1 The weight of Fusion Stone products is approximately 10 13lbs per square foot depending on the stone profile and texture.

### Spec. Note:

A: Contractor will be held responsible for ordering the correct stone quantities for the entire project.  
B: Slight variations between manufacturing runs may occur. It is recommended, when installing Fusion Stone Units, that the product be blended from all material on site during installation.

- 6.0 Delivery
- 6.1 Manufacturer/Distributor shall deliver product to job site as scheduled.
- 6.2 Manufacturer/Distributor shall not be held responsible for any unforeseen delays due to outside influence.
- 6.3 Pallets shall be shrink-wrapped at time of delivery.
- 6.4 Product shall be delivered on approved packaging.
- 7.0 Storage and Handling
- 7.1 Store Fusion Stone to prevent damage and deterioration.
- 7.2 Product shall not be stacked more than two cubes high.
- 7.3 Contractor shall be held responsible for damaged product resulting from rough on-site handling and/or storage practice.
- 8.0 Limitations
- 8.1 Fusion Stone Units and Accessories are intended for above grade installations.
- 9.0 Environmental Requirements
- 9.1 Fusion Stone Units may be connected to the structural backing in wet, dry, cold, or hot weather without special requirement.



# FUSION STONE SPECIFICATIONS

## B. INSTALLATION:

- 1.0 Fusion Stone Units must be installed utilizing all supplied material.
- 1.1 Install Fusion Stone in accordance with CSA Standard A371 and in accordance with all other requirements of the Fusion Stone Specification herein.
- 1.2 Sheathing Membrane: Install in accordance with all requirements of the applicable Provincial Building Code, Cladding, and the manufacturer's instructions.
- 1.3 For exterior exposure, install not less than one layer of sheathing membrane directly over wall construction sheathing.
- 1.4 Sheet Metal Flashing and Trim: Install in accordance with Section 02 62 00 (07620).
- 1.5 Flexible Flashings: Install in accordance with Section 04 05 23 (04090). Install through-wall sheet metal flashing under all Fusion Stone Starter Strips.
- 1.6 Secure Fusion Stone Starter Strips to wall construction sheathing at pre-punched locations in vertical leg using one (1) specified Fusion Stone fastener per punched hole; do not predrill construction sheathing; do not over-torque fastener.
- 1.7 Install only product that is free from defects and deficiencies. Install only Fusion Stone units that are free from stains, chips, or cracks.

Spec. Note:

A: Please refer to [www.fusionstone.ca](http://www.fusionstone.ca) or the installation instructions included in the packaging.

## C. CLEANING:

- 1.0 To clean dirt or other particles from Fusion Stone, use a granulated type detergent mixed with water and a soft bristle brush.
- 1.1 Do not use acid or acid-based products, power washing, sandblasting or wire-brush cleaning.
- 1.2 Use alternative cleaning solutions and methods for difficult to clean masonry only after consultation with the Fusion Stone Units manufacturer.

## D. WARRANTY:

- 1.0 Fusion Stone Guarantees for Life the structural, aesthetic and performance integrity of their products. A Guarantee of Strength and Performance on all Fusion Stone products is provided when used on structures that conform to local building codes and when installed in accordance with installation guidelines. Any product that proves defective will be replaced without cost, excluding labour. The Warranty does not cover what we have no control over, namely building settlement, wall movement, contact with chemicals and airborne contaminants that may cause staining or colour changes to the product.



Proudly manufactured in Canada by Shouldice Designer Stone

281227 Shouldice Block Road, Shallow Lake, Ontario, N0H 2K0 CANADA  
800.265.3174 | [fusion@shouldice.ca](mailto:fusion@shouldice.ca)

**CCMC# 14008-R**