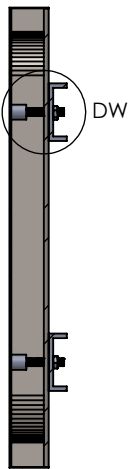


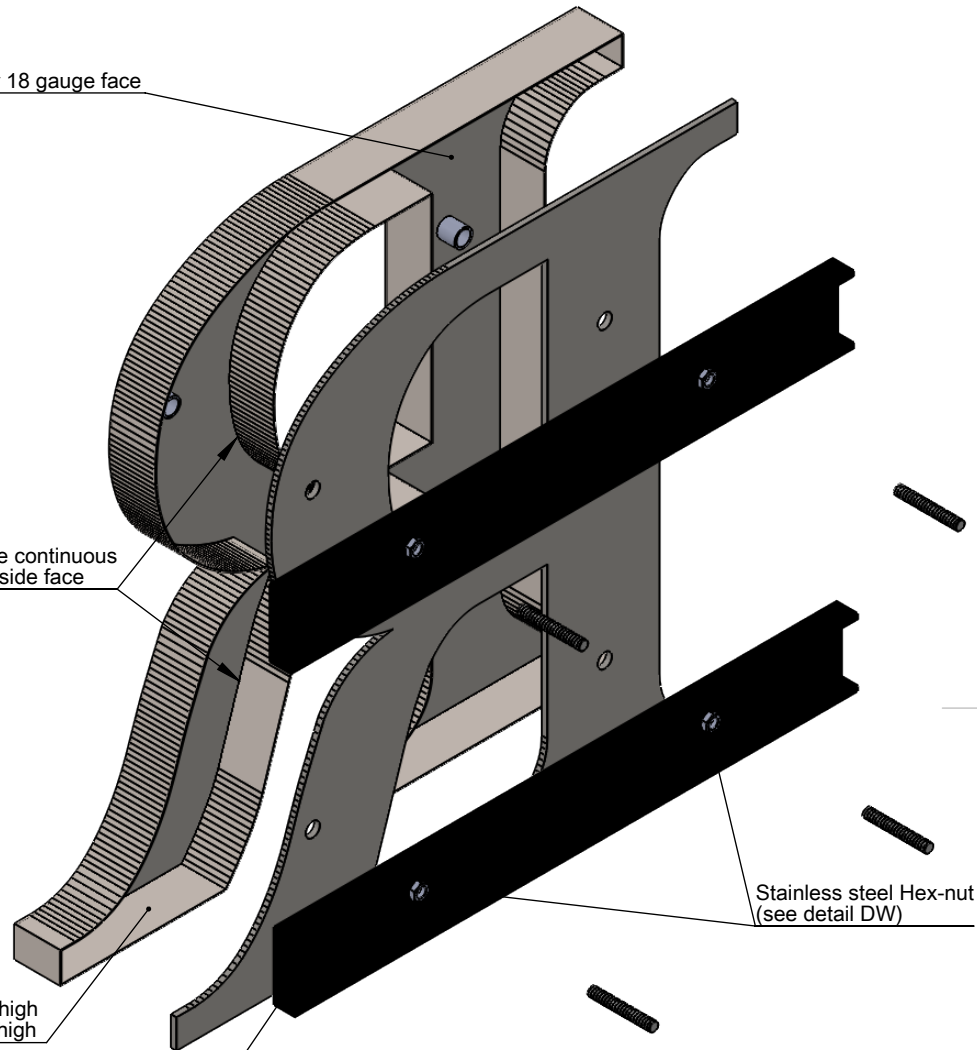
FRONT VIEW II SCALE 1:5



SECTION A-A II SCALE 1:5

16 or 18 gauge face

Lead free continuous solder inside face



ISOMETRIC BACK VIEW II SCALE 1:3

Rail position options  
Flushed to ends. Extended rails

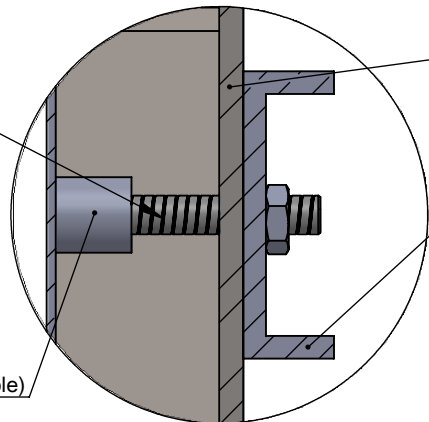
Stainless steel Hex-nut  
(see detail DW)

Stainless steel  
Mounting stud  
Size varies (see table)

Removable light diffused plastic or  
stainless steel back.

C-Shape aluminum painted rail  
1" deep x 2" or 3" wide or  
1/2" deep x 1" or 1 1/2" wide

24 gauge return material - 4" to 24" high  
22 gauge return material - over 24" high



DETAIL DW II SCALE 1:1

LETTER SIZE	MIN. DEPTH AND STROKE	STUD BOSS	STUD
4" to 6"	0.6" 15 mm	Small	6 - 32
over 6" to 24"	1.0" 25.4 mm	Medium	10 - 24
over 24"	1.75" 44.5 mm	Large	1/4 - 20

**MATERIAL OPTIONS**  
 Standard - 304 prefinished stainless steel  
 Optional - 316 prefinished stainless steel (more corrosion resistant)  
 - 304 prefinished stainless with titanium coating

**Note:**  
 - Return grain will run around the perimeter of the letter

**BACK OPTIONS**

- Light diffused plastic: 0.187" thick
- Stainless steel - same gauge as face



TITLE:  
**METAL FACE WITH BACK - DOUBLE RAIL MOUNT**

MATERIAL:  
**STAINLESS STEEL**

PRODUCT TYPE:  
**FABRICATED METAL**