



Ghana
International
School

Motto: "Understanding of Each Other"



Admissions
Frequently Asked Questions

FAQs

Accredited by:



Member of:





Infant School

This division corresponds to the Foundation Stage (Nursery and Reception) and Key Stage 1. There are approximately 230 children of over 15 different nationalities on roll, taught by over 50 teachers and graduate teachers who serve as Junior Teachers or Designated Support Assistants.

Nursery

Which curriculum do children follow at the Nursery level and what does the Nursery Programme look like?

The GIS Nursery curriculum employs a cross-curricular approach to learning, using the Cambridge Early Years curriculum, learning through play and specialist subjects experiences in Art, P.E., Computing, Music, and French. The curriculum is holistic, focusing on the whole child and connecting their development with the host country, the world, and the people around them enabling them to grow as confident global citizens.

The Cambridge curriculum focuses on six areas of learning rather than specific subject areas.

The Six Areas of Learning Are:

- » Communication, Language and Literacy
- » Physical Development
- » Personal, Social, and Emotional Development
- » Mathematics

- » Understanding the World
- » Creative Expression.

In keeping with the Reggio Emilia Approach to the education of very young children, pupils are encouraged and supported to develop to their fullest potential in all six areas: to observe and interact with each other and their environment in the cooperative, collaborative, co-construction of knowledge; to use their senses fully; to think, explore, experiment, question and express themselves in a hundred different languages, both verbal and non-verbal, using a myriad of tools and a variety of media, in multiple contexts and different settings.

The children in the Nursery are introduced to our GIS Attributes - Be Disciplined; Communicate Effectively, Think Critically; Be Internationally Minded; Be Socially Responsible, and Display Creativity. These attributes are embedded throughout teaching and learning in the Nursery. Pupils/children are encouraged to develop to their fullest potential in all six attributes. Our Nursery welcomes an open and supportive partnership with parents and home and school enjoy the benefits of this with children who are very settled, confident, and happy to learn in many ways and to try new things.





What ages are Nursery children?

Age 3-4 years

How are entry assessments carried out?

The children are invited to campus and are introduced to a member of the Infant School Teaching Team. The Teacher then sits with the child and goes through a series of age appropriate questions and hands-on activities to explore the child's abilities for their age. The Assessor uses the opportunity to build rapport with the child during this process. Observation notes are made and a holistic picture of the child's readiness for GIS Nursery is formed.

Does my child have to be potty-trained before enrolling?

Every child must be potty-trained before they enter the Nursery setting. Our Nursery setting requires the children to be fully potty-trained. We do not change nappies or pull-ups and all children must

be out of nappies and pull-ups when the children start Nursery in September.

How many children are in each class?

There are 15-18 children in each Nursery Class

What school supplies does my child need for school?

- » Labelled P.E. kit (green shorts and white T-shirt).
- » Labelled water bottle with your child's name.
- » Soft sports shoes or plimsolls.
- » A spare set of labelled clothes for changing into
- » Snack boxes and containers should be labelled with your child's name
- » An old oversized t-shirt for hands-on Art projects.



Reception

Which curriculum is run for Reception?

The Cambridge Early Years Curriculum Framework **sets standards for the learning, development, and care of children from birth to 5 years old.** It's the first stage of a child's education. It ends when a child enters Key Stage One (KS1). The Early Years Curriculum is based on **six key areas of learning.** The Early Years Foundation Stage (EYFS) sets the standards for learning, development, and care in early years settings. It ensures that children aged from birth to five learn and develop well, and are kept healthy and safe.

The Cambridge curriculum focuses on six areas of learning rather than specific subject areas.

The Six Areas of Learning Are:

- » Communication, Language, and Literacy
- » Physical Development
- » Personal, Social, and Emotional Development
- » Mathematics
- » Understanding the World
- » Creative Expression.

What ages are Reception?:

4-5 year olds.

How many children are in each class?

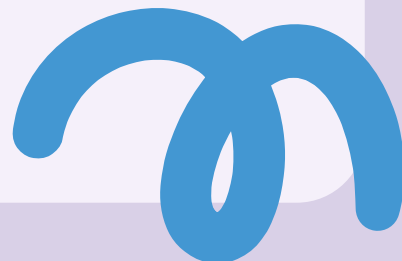
There are 15-22 students in Reception classes

How are entry assessments carried out?

Prospective pupils need to be physically present in the school to write an Entry assessment. The children are invited to campus and are introduced to a member of the Infant School Teaching Team. The Teacher then sits with the child and goes through a series of age appropriate questions and hands-on activities to explore the child's abilities for their age. The observation notes are made and a holistic picture of the child's readiness for GIS Reception is formed.

What school supplies does my child need for school?

- » Labelled water bottle.
- » Labelled P.E. Kit- White 'T' Shirt over yellow shorts.
- » Labelled P.E. canvas shoes.
- » A spare set of labelled clothes for changing into
- » Snack boxes and containers should be labelled with your child's name
- » An old oversized t-shirt for hands-on Art projects.





Year 1

Which curriculum is run for Year 1?

GIS follows Cambridge Primary International Curriculum for Year 1. We also use the English SEAL curriculum for Personal, Social, Health, and Economic (PSHE) education.

What ages are Year 1:

5yrs - 6yrs

How are entry assessments carried out?

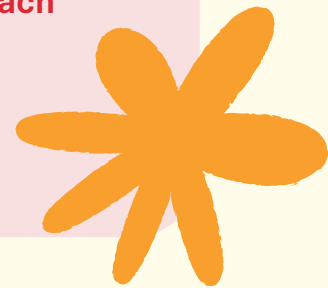
Prospective pupils need to be physically present in the school to write an Entry assessment for Literacy and Maths.

What is the dress code for Year 1 pupils:

- » Year 1 students wear the prescribed uniform.
- » Boys wear white shirts, blue/grey shorts, white socks and black shoes.
- » Girls wear white and green striped A-line uniforms, white socks, and black shoes.
- » The P.E. uniform - white T-shirt, red shorts, white socks and trainers.

How many children are in each class?

20-24 students



Year 2

Which curriculum is run for Year 2?

GIS follows Cambridge Primary International Curriculum for Year 2. We also use the English SEAL curriculum for PSHE.

What school supplies does my child need for school?

- » Labelled water bottle.
- » Labelled P.E. Kit- White 'T' Shirt over blue shorts.
- » Labelled P.E. canvas shoes.

- » Snack boxes and containers should be labelled with your child's name
- » An old oversized t-shirt for hands-on Art projects.

What ages are Year 2?:

6-7 years

How are entry assessments carried out?

Prospective pupils need to be physically present in the school to write Literacy and Maths



assessments. These assessments are carried out with a group of pupils who take the assessment at the same time.

How many children are in each class? :

22-24 students

What time does school begin?:

7:30 am - children can come into their classes and start on early morning activities registration is from 7.30-8.00 am all children must be in class by 8.00 am prompt

What time does school close?:

2:00 pm

Does the school run a transportation system?

No transportation is provided by the school.

How safe are the children on the school campus?

The school is safely monitored and guarded by professional security, engaged in routine checks of children coming in and out of campus.

Children are well supervised and taken care of. Teachers are on duty each and every day of the week to supervise children in and out of classroom activities, snack time, lunchtime, and playtime. A system is in place to release children to named and specified persons only. Children are not permitted to be released to any person who has not been named and verified as having permission to collect the child. All persons on campus go through our security protocols to be permitted on campus.



Snacks and Lunch

Does the school have catering providers?

The school has contracted a certified catering service that provides lunch for children on the parents' demand. A fee is paid termly, per child. However, children can also bring their own snacks/ lunch. Children who bring their food are required to come along with it to school in the morning.

If a parent opts for the school's catering services, what are the terms of payment?

The Wellness Team corresponds with parents and gives advance notice of upcoming options for signing up for School lunches. There is a website that supports this process. Parents pay for the term

and are given options on the menu in advance. There are specific deadlines for signing up and making payments which are communicated to parents.

Where do the children sit to eat the snacks and lunch?

We have a modern state-of-the-art Cafeteria that is available for use.

How many times do children go on break?

Snack Time:

1st Break (Snack) 9.00 - 9.30 a.m. and

2nd Break (Main food) 11.30 a.m. – 12.30 p.m.



Can a parent opt to bring their child food from home?

This is allowed.

What snacks are not allowed in the school?

Due to our commitment to promoting healthy dietary habits among students and school community members, the school does not allow fizzy drinks, energy drinks, drinks in glass bottles, and processed foods. We also do not allow nuts due to nut allergies. Parents are encouraged to provide nutritious snacks and healthy balanced meals for their children.

NB: Snacks/Lunches are not accepted at the school office at any time. Students who do not have a snack/lunch will be provided with a nutritious substitute.

Is jewellery allowed?

A simple pair of earrings and a simple watch is allowed. For safety purposes, we do not encourage the wearing of necklaces, bracelets, fancy jewellery or hoops, or long earrings.



Does the school have a Wellness centre?

The school has a well equipped wellness centre. Manned by three qualified nurses.

If my child is allergic to a substance how can a parent communicate it to the school?

You will receive an allergy and medical form to be completed by the parent, after a successful assessment.

What school supplies does my child need for school?

This is included in the Admission Package, in which parents will receive information from their child's class Year Group.

What facilities are available for Infant pupils?

In addition to brightly decorated classrooms, children have access to a Primary School Library, a Music Department, a French room, and an ICT lab. There is a Sports field, a basketball court, a Nursery garden, two assembly halls, a state-of-the-art cafeteria, and three small play areas and from Year 1, children have access to the pool through swimming lessons that are included in the curriculum. In addition to the IT Lab pupils have access to iPads and Chrome books in their teaching and learning experiences. Children use the Outside Atelier Learning Space each week to have an outdoor focused active learning session.

Support System

Does the school have an on-campus clinical/educational psychologist?:

The School has a qualified and dedicated Primary School Guidance Counsellor who is available for both parents and pupils through self-referral or referrals by the Vice Principal. The School also has three SENCos (Special Educational Needs Coordinators) with support teaching teams in the Infant School, Junior School, and Secondary School. The SEN Team facilitates teaching and learning, with IEPs (Individual Education Plans) where applicable, for children who require additional learning support. Our learning support programme is tailored to the needs of all students across the academic spectrum - low, average, and high achievers. This helps to manage possible stigma related tendencies.

We have qualified Clinical Psychologists contacts on call and we liaise with other health professionals and speech and language Therapists when needed.

What is your Bullying Policy?

GIS has ZERO tolerance for bullying! Our Anti-bullying policy is based on research and evidenced-based practices. We actively teach kindness as well as student advocacy to stand up to bullying. Our teachers are actively engaged in talking about kindness and responding professionally to any reports of bullying.

If a parent is not happy with a staff member's behaviour who can they report to?

The sectional Vice Principal of your child will be available to handle any parent or pupil's concerns.

On what basis can a parent be allowed to pick up their child before school closes?

A parent can pick their child up for either a medical appointment or for travel reasons. If your child is not well, you will be contacted to pick up your child from school.

What extracurricular/co-curricular activities are provided?

There is a wide range of co-curricular activities that the students can choose and participate in. African Rhythms, Contemporary Dance, Games & Sports, Beading, Arts & Craft, Nature Club, Robotics, Recorder, Traditional Dance, Drama, Sign Language, Coding. Currently, there is an after-school provision for Year 2 pupils only in French Club, Coding Club, Football, Arts Club.





Alfresco Student Autonomy

At our school, Alfresco offers children a unique platform to express their creativity and leadership in meaningful ways. Students are encouraged to showcase their talents and organise themselves by writing their own poems, scripts, choreographing dance performances, and creating live art pieces. These creative expressions not only allow them to develop their individual skills but also contribute to the well-being of the community by providing uplifting, engaging content that serves a purpose beyond the classroom.

The Alfresco platform beautifully integrates the creative talents of children while fostering a sense of community leadership. It encourages children to discover their hidden talents, supporting both personal growth and the growth of their peers.

The event occurs bi-monthly, and participation is open to all Infant School children and staff, allowing for a rich mix of performances and shared experiences. Through Alfresco, we empower students to be confident, creative thinkers while instilling values of teamwork and community



Student Leadership

The Student Leadership program at the Infant School offers a unique opportunity for young children to engage in decision-making and leadership. Each year group elects two student council representatives, ranging from 3 to 7 years old. The process is designed to be emotionally intelligent and empowering, allowing children to express their ideas and craft a manifesto as part of their leadership journey. These representatives actively participate in school committees, providing valuable insights and contributing to the overall decision-making of the school through the Infant School Student Council (ISSC).

This early leadership experience not only builds confidence but also fosters communication, critical thinking, and a sense of responsibility in young learners.





Junior School

The Junior School compound is situated on the north side of Second Circular Road and has approximately 415 children. It encompasses classes three to six. Children complete the Junior School at ten years of age.

What does the curriculum Programme look like?

The subjects are based on the Cambridge Primary Curriculum for the core subjects (English, Mathematics, and Science) and Key Stage 2 of the English National Curriculum.

The Areas of Learning Are:

Class teachers:

- » Mathematics
- » English
- » History
- » Geography
- » Personal, Social and Health Education (PSHE)

Specialist teachers:

- » Science
- » French
- » Music
- » Art
- » Physical Education
- » Information Technology
- » English as a Second Language
- » Spanish (Year 6 ONLY)

What ages are Junior children?

Age 7-10/11 years

How are entry assessments carried out?

Entry Assessments take place onsite in Mathematics and English. Remote assessments - Exemptions are made for our expatriate families on a “need-to” basis. This allows the student applicant to take the assessment remotely.

How many children are in each class?

There are 25-27 children in each Class, depending on the characteristics of the cohort. Note: Each class has a teacher, a Junior Teacher, and in some cases, a Designated Support Assistant. This allows for increased learner contact and a balanced student-adult ratio per class.

Does the school run a transportation system?

No, transportation is not provided by the school. Students are ferried to and from school by parents/drivers.

What time does school close?

School closes at 2.40 p.m. on Mondays, Tuesdays, Thursdays and Fridays, and at 2.00 p.m. on Wednesdays.

Does the school have catering/ canteen services?

The school has contracted a certified catering service that provides lunch for children on the parents’ demand. A fee is paid termly, per child. However, children can also bring their own snacks/lunch. Children who bring their food are required to come along with it to school in the morning. Food cannot be delivered to school when classes are in session. We do not reheat food that has been brought from home. All packed lunch/hot meals must be kept in a thermos/heat proof container.



If a parent opts for the school's catering services, what are the terms of payment?

The Wellness Team corresponds with parents and gives advance notice of upcoming options for signing up for School lunches. There is a website that supports this process. Parents pay for the term and are given options on the menu in advance. There are specific deadlines for signing up and making payments which are communicated to parents.

Where do the children sit to eat their snacks and lunch?

We have a modern state-of-the-art Cafeteria where children have their lunch.

How many times do children go on break?

Snack Break: 9:10 a.m. - 9:40 a.m

Lunch Break: 12:20 p.m. - 1:20 p.m..

Can a parent opt to bring their child food from home?

This is allowed.

What snacks are not allowed in the school?

Due to our commitment to promoting healthy dietary habits among students and school community members, the school does not allow fizzy drinks, energy drinks, drinks in glass bottles, and processed foods. We also do not allow nuts due to nut allergies. Parents are encouraged to provide nutritious snacks and healthy balanced meals for their children.

NB: Snacks/Lunches are not accepted at the school office at any time. Students who do not have a snack/lunch will be provided with a nutritious substitute.

Uniform

GIRLS - Dresses should be of the green and white striped material. The school dress style as provided on the style sheet MUST be adhered to, with the stripes running VERTICALLY and NOT horizontally.

BOYS SHIRTS: Plain white cotton short-sleeved shirt, oxford/pointed collar. Polo-type shirts are NOT allowed. Midriff shirts or tight-fitting shirts are NOT allowed. All shirts must have a plain front and MUST be long enough to be tucked into the shorts.

SHORTS: Grey or navy blue cotton shorts. The length of shorts must NOT be longer than knee length. All shorts should be worn with a black or brown belt at the waist and shirts neatly tucked in. Cargo or carpenter-style shorts are NOT allowed.

Where can I get a uniform for my child?

The school provides parents with recommended vendors. Alternatively, parents can buy the fabric from the Kingdom bookstore on campus and sew the uniform with their preferred tailor/seamstress, per the GIS uniform specifications.



Does the school have an on-campus clinical/educational psychologist?

The School has a qualified and dedicated Primary School Guidance Counsellor who is available for both parents and pupils through self-referral or referrals by the Vice Principal. The School also has three SENCos (Special Educational Needs Coordinators) with support teaching teams in the Infant School, Junior School and Secondary School. The SEN Team facilitates teaching and learning, with IEPs (Individual Education Plans) where applicable, for children who require additional learning support. Our learning support programme is tailored to the needs of all students across the academic spectrum - low, average and high achievers. This helps to manage possible stigma related tendencies.

We have qualified Clinical Psychologists contacts on call and we liaise with other health professionals and speech and language Therapists when needed.

What is your Bullying Policy?

GIS has ZERO tolerance for bullying! Our Anti-bullying policy is based on research and evidenced-based practices. We actively teach kindness as well as student advocacy to stand up to bullying. Our teachers are actively engaged in talking about kindness and responding professionally to any reports of bullying.

If a parent is not happy with a staff member's behaviour who can they report to?

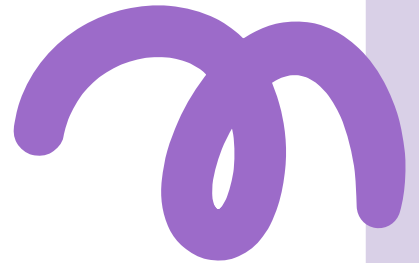
The sectional Vice Principal of your child will be available to handle any parent or pupil's concerns.

On what basis can a parent be allowed to pick up their child before school closes?

A parent can pick their child up for either a medical appointment or travel reasons. If your child is not well, you will be contacted to pick up your child from school.

What extracurricular/ co-curricular activities are provided?

There is a wide range of co-curricular and after-school activities that the students can choose and participate in. (e.g. Einstein Club, Taekwondo, Beading and Crocheting, Chess, Dance, Drama, Football, Coding/Robotics Clubs, Swimming, Public Speaking/ Debating, Basketball, etc.)





Secondary School

The Lower Secondary School consists of Forms 1 - 3. Its curriculum is fashioned after the Cambridge Lower Secondary Curriculum and the Key Stage 3 English Curriculum.

The Upper Secondary School offers IGCSE (Key Stage 4) and GCE A-Level. Forms 4 - 6 constitute the Upper Secondary School, with Forms 4 and 5 studying the Cambridge IGCSE Curriculum (Key Stage 4) to write the examination at the end of Form 5.

In the Secondary section, courses are validated through IGCSE examinations at age 16 and GCE Advanced Level at age 18. The 11-16 age groups are called Forms 1 to 5, with IGCSE being taken at the end of Form 5. The 16-18 age groups are called Lower 6 and Upper 6 with the A-Level being taken at the end of Upper 6.

GIS also offers Pearson BTEC Courses as an additional pathway at the IGCSE level as follows:

- » Pearson BTEC International Level 2 in Creative Media
- » Pearson BTEC International Level 2 in Music

What ages are Secondary children?

Age 11 - 18/19 years

How are entry assessments carried out?

Diagnostic written assessments are done onsite in Mathematics, English, and Sciences, and a Language option. Remote assessments - Exemptions are made for our expatriate families on a "need-to" basis. This allows the student applicant to take the assessment remotely.

How big are the class sizes?

There are about 27 children in each Form 1 -3 Class. In the Upper Secondary section, class sizes depend on the subject selection choice of the students.

What are the school times?

Registration/Assembly time is 7.45 a.m. All students are required to attend the registration/assembly. School closes at 3.10 p.m. During the Lower Secondary exam week school ends at 2.00 p.m.

Does the school run a transportation system?

No, transportation is not provided by the school. Students are ferried to and from school by parents/ drivers.

How does the school support students' social and emotional well-being? (including students transitioning to GIS from a foreign country)

The school's Admissions Team and the Guidance Counsellor (in collaboration with the VPs' offices) organise orientation for new students. One-to-one and group meetings are also arranged with new families of students who join midstream. Such students are monitored regularly to ensure their smooth transition academically, socially, and emotionally. New students are also assigned student buddies to support the seamless transition and integration into the school. Parents are brought in where necessary to deal with any problems that may be identified. Form Teachers provide a mentor for each new student, who will help the student to settle in as quickly as possible.

Every student will be assigned to a pastoral care Tutor who will provide an additional level of care and support to the students in his/her tutorial group. The Tutors will work closely with Form Teachers to ensure that students settle in comfortably and maximise the opportunities available throughout the academic year.



What extracurricular/co-curricular activities are provided?

There is a wide range of co-curricular and after-school activities that the students can choose and participate in. (e.g. Art appreciation, Athletics, Badminton, Beading and Crocheting, Chess, Community Service (Lab Work), Community Service (New Horizons Special School), Community Service (Literacy Clubs) Cookery, Dance, Drama, Film Appreciation, Football, French, Leadership Club/Commonwealth, Martial Arts, Maths Appreciation/MISE, Model United Nations Conferences, Coding/Robotics Clubs, Swimming, Public Speaking/ Debating, Basketball, Hockey, Volleyball, Table Tennis, Entrepreneurship Club.)

These do not come at an additional cost to parents. It forms an integral part of the school's educational design and provides an opportunity to reinforce the skills, values, and attributes taught through the formal curriculum. It also helps promote/develop student talents and abilities in non-academic areas.

Are there additional charges for extra-curricular/ co-curricular activities?

There are no extra fees or charges for co-curricular programmes, work shadowing opportunities, internship offers, etc. provided by the school. Students are only required to make payments in case of overnight stays on field trips, international conferences, and competitions among others.

What is the student-to-teacher ratio?

The student-to-teacher ratio is 9:1

What resources are available for students with special needs or learning differences?

Our Special Education Needs (SEN) Department provides support for students with disabilities or learning differences to receive the necessary assistance and resources to help them grow and succeed academically, socially, and emotionally.

What is the school's approach to discipline and behaviour management?

The secondary school has a nurturing (through Form teacher interactions, Pastoral care sessions, counselling sessions, PSHE - personal, social, health and economic education sessions, health studies, etc) and progressive approach to discipline which is guided by rules and regulations as outlined in the Students' Handbook. Students will make mistakes and the sanctions are imposed to hold them accountable for their mistakes.

What is your Bullying Policy?

GIS has ZERO tolerance for bullying! Our Anti-bullying policy is based on research and evidenced-based practices. We actively teach kindness as well as student advocacy to stand up to bullying. Our teachers are actively engaged in talking about kindness and responding professionally to any reports of bullying.

How does this school support students in their post-secondary plans?

Our College and Career Counselling Office has two Career and Guidance Counsellors who are available for one-on-one appointments. Additionally, all Form 3 students have weekly lessons with a College Counsellor for a full term. Lower Six students have regular scheduled sessions throughout the academic year.

What are the top University destinations of your students?

Our students are mostly accepted into universities, with scholarships in most cases, in Canada, Germany, Ghana, Switzerland, the United Kingdom, the United States of America, etc.

What are some examples of the universities your students have moved on to, over the last few years?



USA: Yale University, Stanford University, Cornell University, University of Pennsylvania, University of Richmond, Washington University in St. Louis, University of Michigan, Rice University, Bucknell University, Boston University, Smith College, Emory University, Maryland Institute College of Art, Brown University.

United Kingdom: London School of Economics, Lancaster University, University of Edinburgh, Durham University, University of Warwick, University of Bath, University of Manchester, University of Nottingham, University of Dundee, University of the Creative Arts, London, University of Kent, University of Birmingham, University of Buckingham, University of Oxford.

Canada: University of Toronto, McGill University, University of Alberta, University of British Columbia, Waterloo University, Concordia University, Carleton University, University of Ottawa, Dalhousie University, York University, Queens University, McMaster University, University of Victoria.

Switzerland: Ecole Hoteliere de Lausanne (EHL), Swiss Hotel Management School, Cesar Ritz Colleges.

Do you have boarding facilities?

Yes. Our boarding programme is available for students in Form Two - Upper Sixth Form only. We have both hybrid/ flexible and full boarding options. The hybrid/flexible is a weekly boarding offering where students are required to go back home at the end of each week (Fridays) and return to the boarding house on Sunday afternoon (ready for the start of the school week). For the purposes of extended learning (academic support), Duke of Edinburgh Award activities, experiential learning opportunities, etc., weekend stays are planned throughout the school year. These take place on selected weekends, for which parents are notified in advance, hence, requiring students not to go home but stay in the boarding House.

Does GIS offer sibling discounts?

We do not provide any sibling discounts. As a non-profit institution, all funds are channelled into providing high-quality educational programmes.

What is the background of your secondary school teachers? What proportion are UK trained?

All our teachers (across Primary and Secondary) are trained to deliver the curriculum available on offer - with some (e.g. Sociology, Economics, Business Studies, etc.) being Cambridge Examiners. They undergo regular and in some cases, annual Cambridge professional development and training (if need be - e.g. curriculum change requirements) facilitated by the School.

What are the nationalities of your students?



There are currently 35+ different nationalities represented in our student population - with the top 6 countries being Ghana, India, the United States of America, the United Kingdom, Nigeria, and China.


What is the average class size for GCSE and A-level subjects?

Our class sizes at this level are dependent on the popularity of the various subjects in a given academic year - with a wide range of subject choices available on offer. This is mainly influenced by students' college and career goals/objectives. We also have up to four sets per subject depending on the number of students who opt to offer that subject. This translates into class sizes of 18, 15, 8 or 5 in some cases.

As a school, we require IGCSE students to offer at least one science subject and encourage our students to keep a science subject for as long as they can. We are fully aware of the uncertainties of making definite college or career decisions at this stage of a child's growth. More so, we acknowledge the ease with which one can transition from the sciences to the arts and humanities, but almost impossible to move from the arts to science.

Connect with us

 Ghana International School | 2nd Circular Road, Cantonments
P.O. Box GP 2856, Accra Ghana
 Digital Address: GL- 059- 6323

 +233 (0) 30 3979198 / 3979588 / 3979589
+233 (0) 30 2773299 / 2777163 / 2775143

 www.gis.edu.gh

 prinoffice@gis.edu.gh

 Ghana International School (GIS)

 [@ghanainternationalschool](https://www.instagram.com/ghanainternationalschool)

 [@GhaIntSch](https://twitter.com/GhaIntSch)

 [@ghanainternationalschool](https://www.linkedin.com/company/ghanainternationalschool)

 [@ghanainternationalschool](https://www.youtube.com/channel/UC...)