



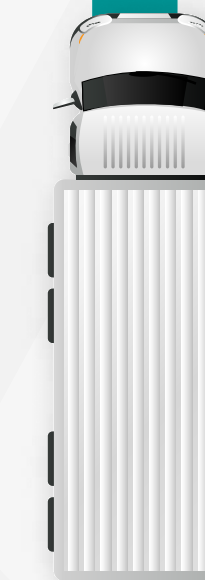
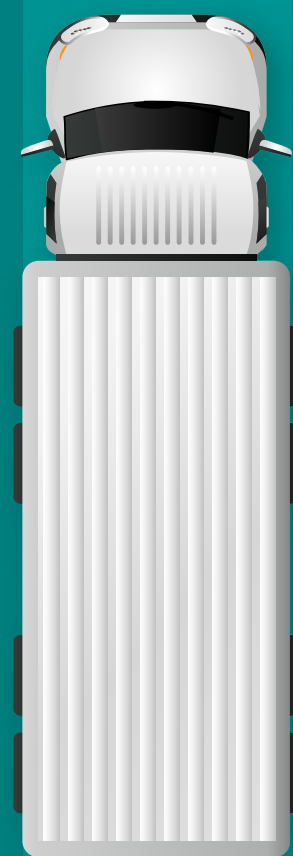
## PLATFORM INTEGRATION

# Freight Insurance *Fast*™

Offer Freight Insurance Fast excess cargo insurance to customers directly through your own platform.

### AVAILABLE FOR

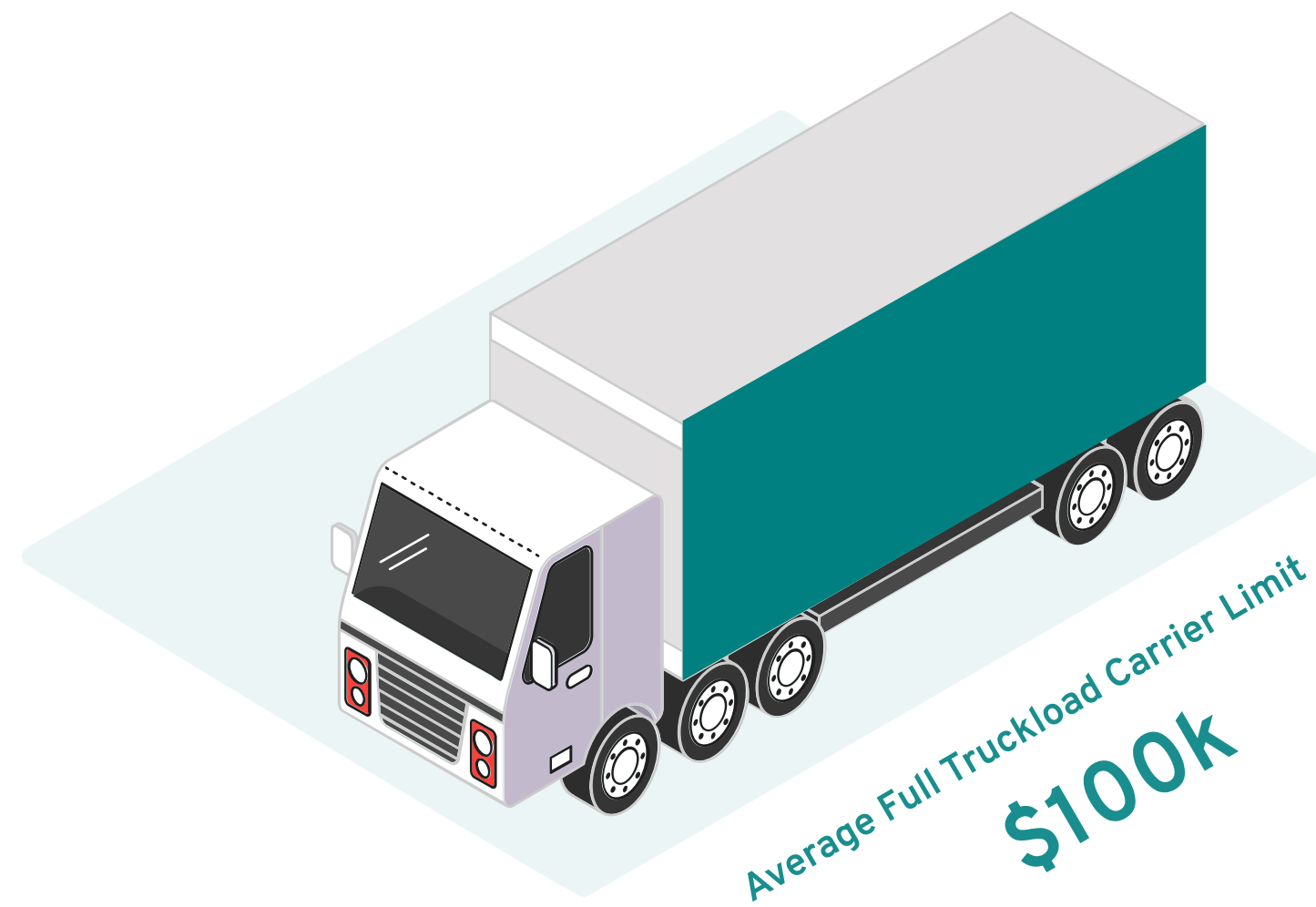
- TMS
- Load Boards
- Reseller Partners





# Millions of shipments are underinsured because of insufficient carrier limits

It's estimated that 90% of shipments scheduled through a TMS are underinsured and shippers don't even know it.





## Benefits for Brokers & Motor Carriers

# Give your brokers and motor carriers tools to quickly insure loads

Brokers and Motor Carriers are carrying cargo covers to protect their shipper's goods in the event of a loss, theft, or accident. But oftentimes they don't have enough. And with the nuances of LTL loads, it's very difficult for a shipper to recoup their loss. With Freight Insurance Fast, your users can instantly boost coverages to win loads and increase value with their clients.



Win higher value FTL loads despite reduced carrier cargo insurance limits



Provide LTL shippers primary cargo coverage for actual value of goods



Increase freight revenue with a wider range of cargo opportunities



Instant access through TMS or Load Board



Increased value proposition with the shipper



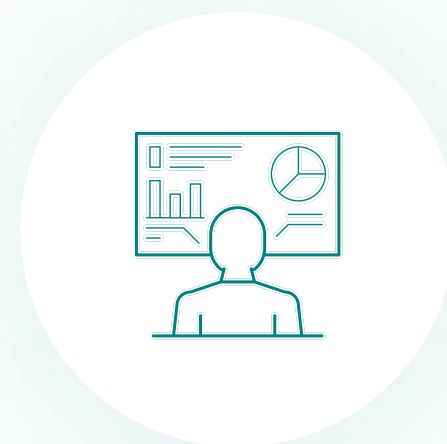


# Freight Insurance Fast gives your business low-maintenance revenue and a competitive advantage



## Low-Maintenance Revenue

Once Freight Insurance Fast is integrated into your platform, you're done. We manage the transactions, support, and claims, sending you monthly revenue checks.



## Platform Differentiation

Give your platform a competitive advantage by providing more tools that your clients can use to improve their win ratios and pace of business



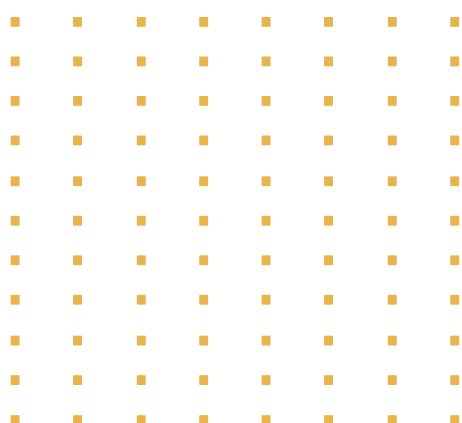
## Marketing Support

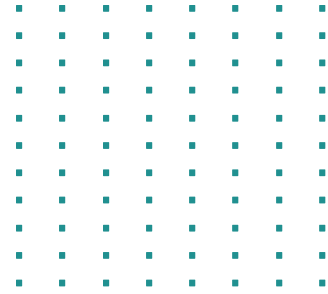
We will help you drive awareness and demand within your user base by providing premium content for your sales and marketing teams to leverage directly.



## One Stop Shop

Keep your customers on your platform by giving them everything they need within your ecosystem.





# Excess cargo insurance just makes sense for your customers



## Stop losing deals because your preferred carriers don't have enough insurance

As a freight broker, we understand that you need to be agile. Finding the right carrier for a load needs to happen quickly. When you're bidding on a load that requires above average insurance limits, your carrier pool shrinks, making it more difficult to provide a competitive quote. With Freight Insurance Fast excess cargo insurance, you can win higher value loads by supplementing your carrier's limits.



## Instantly boost your cargo coverage to win higher value loads

As premiums continue to increase, motor carriers are often forced to lower their limits in order to keep those costs manageable. The trade-off is that carriers can not service loads beyond their limit. But with Freight Insurance Fast, carriers can instantly boost their limits on a per load basis, giving them access to loads that require higher limits.





# It's easy for your users to set up an account and purchase insurance within your platform



01

Apply Online



02

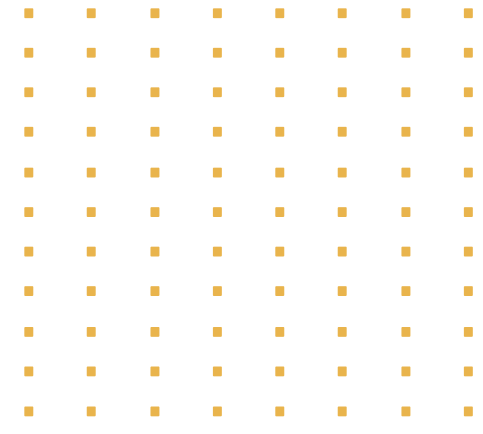
Get Freight Insurance Fast added to your account



03

Add excess cargo insurance to any shipment you want





## About Freight Insurance Fast

Freight Insurance Fast by LOGISTIQ provides quick excess coverage or cargo insurance for freight shippers, freight brokers and truck owners and operators. Our policy is written on an all-risk loss or damage basis to best match the situation for the excess coverage (spot insurance) needed.

Best of all, our all-risk cargo insurance coverage is affordable. The cost for excess cargo insurance is based on the commodity being hauled as well as the deductible selected. The nominal cost can often be passed along to the trucker or built into the freight charges to the shipper.

Freight Insurance Fast cargo coverage is underwritten by AM Best Rated "A" Excellent insurance carriers which confirms superior financial resources are in place standing behind the coverage.

