



**LITEON®**

-  [www.skyla.com](http://www.skyla.com)
-  +886.3.611.8511
-  +886.3.579.5353
-  [support@skyla.com](mailto:support@skyla.com)
-  8, Dusing Road, Hsinchu Science Park,  
Hsinchu 300, Taiwan

About skyla

skyla, derived from the Latin word "scilla", meaning "passionate and energetic", in such a way we focus to deliver reliable technological opportunities to the healthcare industry. skyla belongs to the LITE-ON CORPORATE GROUP, with multidisciplinary expertise in optics, mechanical, electronic, materials, chemistry biotechnology and medical engineering. Guaranteeing the development of high quality innovative medical products.

Visit us at [www.skyla.com](http://www.skyla.com)



skyla Hi Analyzer

Leading the change  
in advancing healthcare



# skyla Hi Analyzer

skyla Hi enables better access to testing and rapid clinical decision making, discussion, and implementation of optimized treatment.

## Features

 Only 0.8ul Fingertips Blood or Venous Blood Without Pretreatment (Depends on test item)

 <6 min Test Time to Get the Result (Depends on test item)

 Two Specimens per Run

 Fully Automated Operations

 Thermal Printer and skyla Data Manager PC Software supported

 Maintenance Free

 Intuitive User Interface and Multiple Languages Functions

 User-Friendly Design



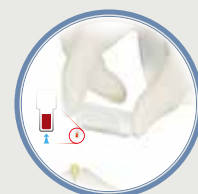
Accuracy  
Accessibility  
Reliability

## Support Test Items \*Under Development

Item	Testing Time	Samples Vol.
HbA1c	<6 min	0.8 $\mu$ L
CRP	6 min	5 $\mu$ L
Lipid Panel (TC, TG, HDL, LDL)	13 min	30 $\mu$ L
Lipid Plus Panel (TC, TG, HDL, LDL, GLU)	13 min	30 $\mu$ L

Item
Cardiac marker*
Inflammatory marker*
Fertility*
Renal Function*

## Easy Operation of skyla Hi HbA1c/CRP (Cartridge)



**Step 1**  
Use the reagent pack to collect sample



**Step 4**  
Insert the carrier and then press "OK" to start analyzing



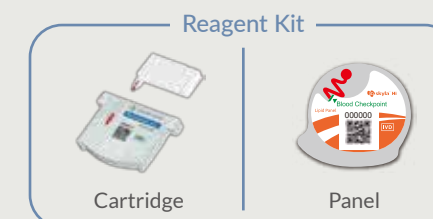
**Step 2**  
Insert sample to the cartridge



**Step 5**  
Read the results



**Step 3**  
Put the cartridge onto the carrier



## Main Specification

<b>Principle</b>	
Turbidimetric Method / Biochemistry	
<b>Device</b>	
Testing Time	6~13 minutes (depends on test items)
Display and Interface	5" TFT color touch screen LCD
Memory Capacity	50,000 test results
Dimension of Analyzer	270 x 188 x 148 mm
Weight of Analyzer	1.7 kg
Dimension of Printer Module	134 x 100 x 82.7 mm
Weight of Printer Module	0.37 kg
Power Supply	100~240 volts AC, 50-60Hz
Data Transmission	USB 2.0*4 / USB 3.0*1 / RS232*1 / RJ45*1 / Wi-Fi (optional)
<b>Reagent and Samples</b>	
Samples	Fingertips blood or venous blood
Samples Volume	0.8 ~ 30 $\mu$ L (depends on test item)
Storage Temperature (Reagent)	2 ~ 8 °C
<b>Operating Condition</b>	
Humidity	Relative humidity < 95% (Non-condensing)
Temperature	10 ~ 32 °C