



Beyond the limits of innovation

**HIOSSSEN**  
IMPLANT



**Optimized primary stability.  
Precise depth control with the proven tapered implants.**

Hiossen ET offers all the benefits of a straight and tapered body implants. Our improved design was created to secure primary stability in all bone types and provide flexibility at implant insertion.

When placing Hiossen Implants, we deliver the best option for reliable, easy, immediate placement and loading even in challenging cases.



## Smiles that last a lifetime

Hiossen is a global leader in the development of implant dentistry, headquartered in Englewood Cliffs, NJ. Together with our parent company, Osstem Implant, we became one of the top five dental implant companies with innovative implant design backed by proven clinical research.

Hiossen provides a broad spectrum of products and services to specifically meet our client's needs. We strive to provide the best surgical and restorative outcomes by conducting rigorous field testing and clinical studies. Our dedication to improving the quality of life of edentulous patients drove us to sponsor many clinical research projects around the world.

## Our Mission

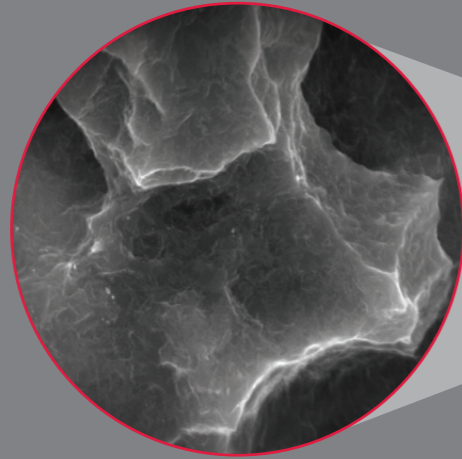
We are more than a Dental Implant manufacturer. Our mission is to discover, develop, and commercialize the most advanced technology to bring life-changing solutions to patients in need, and to become the No.1 company within the dental implant industry.

Our main focuses are:

- Dental Implant System
- Digital Dentistry
- Dental Equipment and Supplies
- Advanced Clinical Education

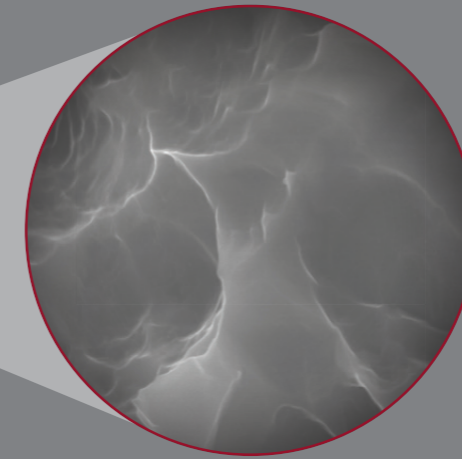
## NH Surface Treatment

Improves osseointegration enhancing healing time due to its unique nano layer of bio-resorbable apatite coating, which has **super hydrophilic properties**.



## SA Surface Treatment

Sandblasted with alumina and acid etched Implant Surface (SA) is a type of treatment that increases the self-tapping, path-correction and primary stability providing osseointegration.



### Aggressive Corkscrew Threads

Double Thread:

- Thread Pitch (0.8mm): the most effective stress distribution and better stability in low-density bone.
- Lead (1.6mm): faster and stabilized insertion.

### Apical Cutting Edge

Smaller diameter in the apex that mimics natural root providing great initial stability.

### Open Thread

Helps preventing necrosis on the cervical margin after implant placement.

### Tapered Body Implant

Increases bone-to-implant contact (BIC) for greater primary stability.

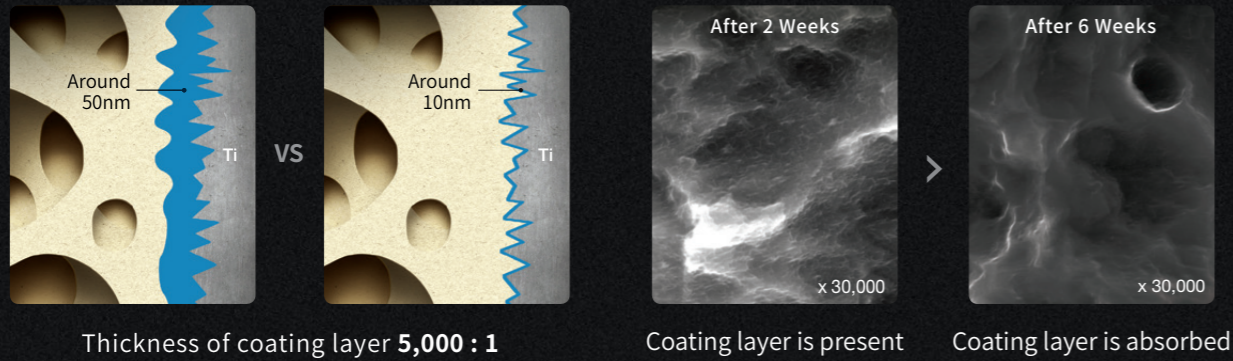
### Triple Helix Cutting Edge

- Self tapping effect: Increases BIC by penetrating through the bone.
- Chip pocket function: Cut and Collects autogenous bone.

# Hiossen NH Surface Treatment

## Faster Bone Healing. Improved Osseointegration.

Hiossen's ET NH (Nano-hydrophilic) provides a unique surface treatment that features a hydrophilic SA combined with a low crystalline Nano-HA. This super hydrophilic NH surface helps ensuring optimal treatment outcomes with every implant you place on any type of bone, providing faster bone healing and improved osseointegration.



Thickness of coating layer **5,000 : 1**

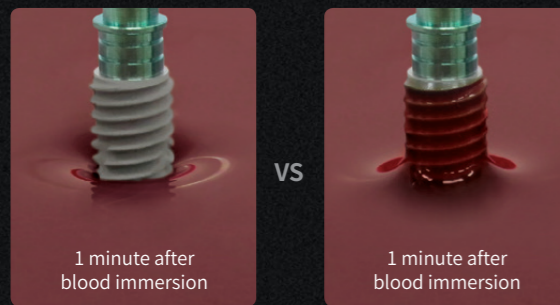
Coating layer is present    Coating layer is absorbed

### Ultra Thin Nano-Coating:

Bioresorbable apatite coating is 10 nanometers thick

### Bioresorbable apatite:

Bone forms directly to the SA surface as the apatite layer is resorbed during osseointegration

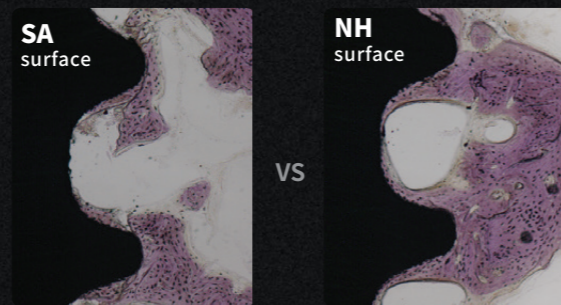


Hydrophobic

Super Hydrophilic

### Super Hydrophilic

12% increase in platelet adhesion (better initial osseointegration) and a 12% increase in cell differentiation (faster osseointegration)



### Significant Improvement to BIC

The super hydrophilic bioresorbable apatite increases Bone to Implant Contact (BIC) by 39% compared to SA

## Superior hydrophilic for enhanced osseointegration

- Increased implant success rates
- Excellent cell response and initial stability
- Shortened treatment times by over 30%

## Highly Predictable Success Rates

This prospective clinical study conducted in 2018 shows the ISQ (Implant Stability Quotient) measurement for four weeks after implant placement using Hiossen ETIII NH Implant. The following table shows the mean ISQ values of implants placed on the maxilla and mandible during the clinical study period. No implant failure or complication occurred.

ISQ values during the study period					
	Implant Placement	Week 1	Week 2	Week 3	Week 4
Maxilla	75.1±6.2	76.2±5.6	76.9±4.8	77.1±5.1	78.4±5.3
Mandible	79.5±6.4	80.5±6.3	80.7±6.4	81.7±5.2	82.6±4.8
Total	78.3±6.6	79.3±6.3	79.7±6.2	80.4±5.5	81.4±5.3

The high ISQ value of over 75 from implant placement indicates strong initial stability after implant placement. Throughout the osseointegration period of four weeks, the mean ISQ value improved with no stability drop. The super-hydrophilic surface improved wettability, significantly increasing blood adhesion. During the remodeling phase, the nano apatite coating was absorbed and the newly formed bone was integrated into the SA surface. The results of this study demonstrate that Hiossen ETIII NH Implant greatly improves the healing process and supports functional loading after approximately four weeks.

Yong-Jin Kim,, Marco Tallarico. (Evaluation of the implant stability quotient for early-loaded implants with a new hydrophilic surface. EDI Journal. 2018).

# Abutments

Abutment is the connecting piece that joins the implant and the crown together. It is an essential part of any implant prosthetics, assisting soft tissue healing and final aesthetics.

## Stock Abutment

A prefabricated abutment that is designed to be convenient and cost-effective. It can be used for either cement or screw-retained restoration. We offer a broad range of restorative options from straight to angled to multi unit abutments.

Dental stock abutments are by far the most popular option for many dental implant patients, providing cost-effective results. Hiossen Implants offers a variety of standard abutment components to maximize the appearance of your implant, bringing patients the best of both worlds.



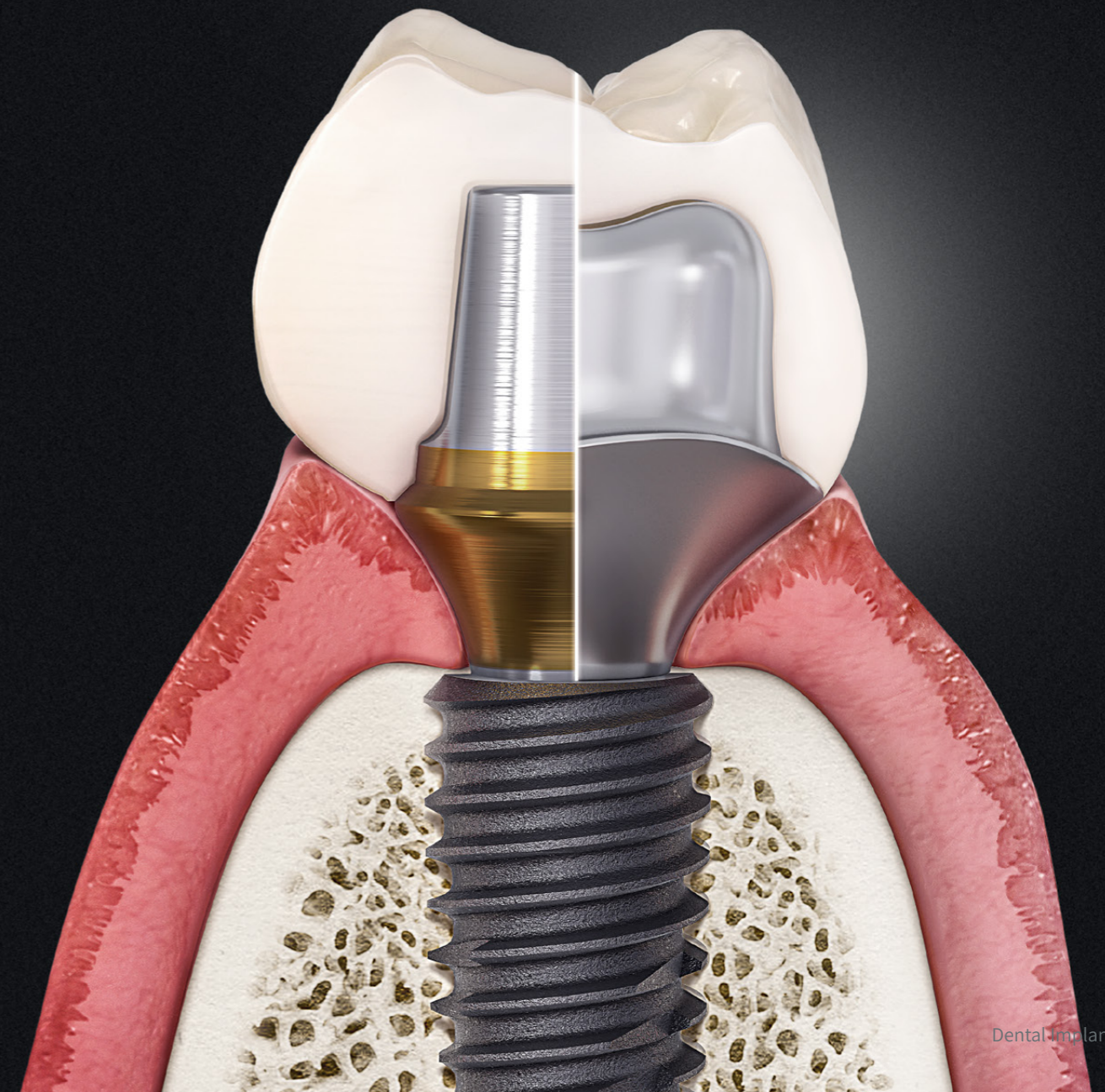
## SmartFit Abutments

Known as patient-specific custom-made abutments, Hiossen SmartFit abutments are CAD/CAM milled to a precise position corresponding to the crest of tissue of each case. Hiossen SmartFit abutments are all fabricated with Grade 5 Titanium alloy and are offered in 3 options, Titanium (Ti alloy), Hybrid (Zirconia and Titanium), and Gold-Colored (Nitro-coated Ti alloy).



## Benefits of SmartFit Abutments

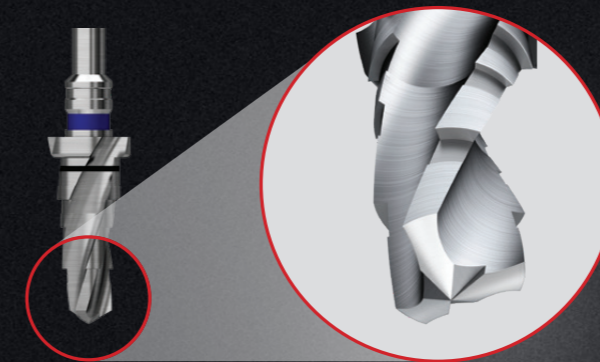
- Create a natural emergence profile
- Crown margin depth can be customized
  - Promote better hygiene
  - Improved esthetics
- CAD/CAM-milled abutments





### Excellent Drilling Power

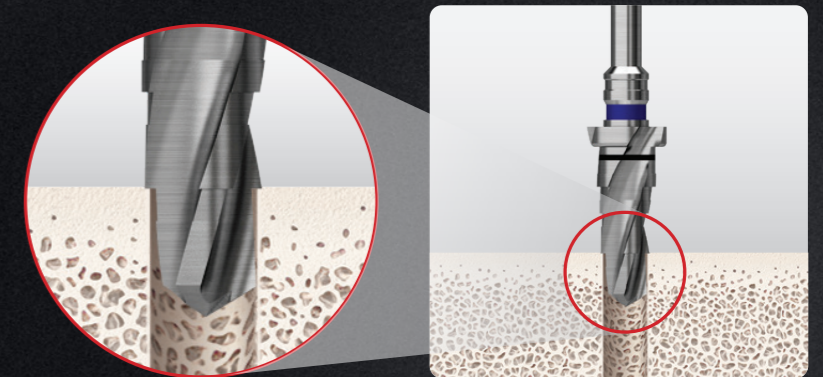
Maximized cutting power (with a distinguished drill design and innovative manufacturing technology) skips intermediate drilling and provides a smooth and fast drilling result.



Drill design has rounded edges and inverse conical shape that decreases the risk of membrane perforation

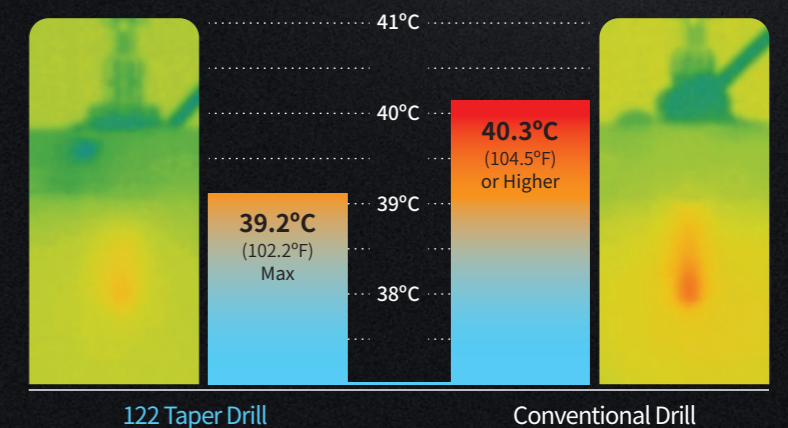
### Preventing Drill Bouncing

Multi-level tapered drill also functions as a pilot drill and prevents bouncing during drilling.



### Preventing Bone Heating

Excellent drilling power leads to skipping intermediate drilling and this prevents bone heating by maintaining low drilling temperature



## Surgical Kits

Our Surgical kits are designed to be as simple and as safe as possible. Featuring several precise drilling tools and guide development from Hiossen Implant, our kits allow for more accurate, efficient and safe surgery with higher predictable success rate

DIGITAL IMPLANT SURGERY	Guided Surgery Kits	ONEGUIDE KIT ONECAS KIT ONEMS KIT		
IMPLANT SURGERY	Implant Kits	122 TAPER KIT TAPER KIT ULTRA KIT DENTURE 4U KIT		
		Prosthetic & Maintenance Kits	PROSTHETIC KIT EFR KIT ESR KIT IM-CURE KIT	
			Sinus Surgery Kits	CAS KIT LAS KIT
				Narrow Ridge Surgery Kits

For more information about our Surgical Kits please reach out to your local Sales Rep.



Smiles that last a lifetime





Please contact your local sales representative or visit our website today to learn more about Hiossen and its products.



All Hiossen Implants are processed and  
Manufactured in the USA

270 Sylvan Ave. Ste 1130, Englewood Cliffs, NJ 07632  
Marketing@hiossen.com | 888.678.0001 | www.hiossen.com

 @hiossen\_implants

 @HiossenImplants

 @Hiossen