



MAP & GUIDE



Published by Tourism Malaysia, Ministry of Tourism, Arts and Culture, Malaysia

TOURISM MALAYSIA Your Free Copy

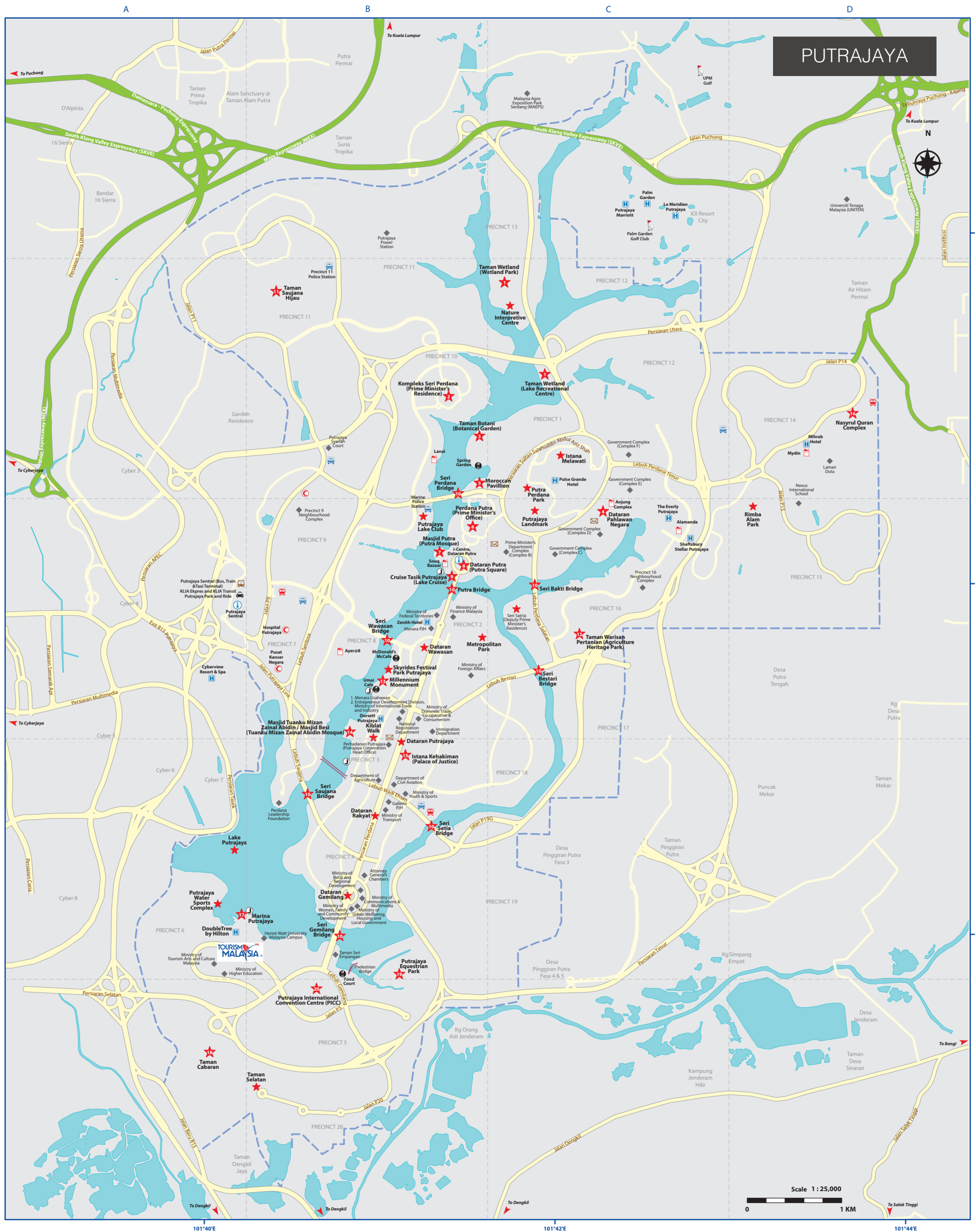
ALL RIGHTS RESERVED. No portion of this publication may be reproduced in whole or part without the written permission of the publisher. While every effort has been made to ensure that the information contained herein is correct at the time of publication, Tourism Malaysia shall not be held liable for any errors, omissions or inaccuracies which may occur.

RMG (English) / H / PR
December 2023

www.malaysia.travel
Follow us: Malaysia Truly Asia

ALSO AVAILABLE AS MOBILE APP
Available on Google Play and App Store

USEFUL CONTACTS
Tourist Information Centres
TIC Meet & Great Tourism Malaysia, KLIA
Tel: 603 8776 4720
KLIA 2
Tel: 603 8778 7090
KL Sentral
Tel: 603 2272 5823
Bangunan Sultan Abdul Samad
Tel: 603 2602 2014
Malaysia Tourism Centre
Tel: 603 9235 4848/4900/4800
Pertandingan Putrajaya
Tel: 603 8887 8000



Places of Interest

Cruise Tasik Putrajaya (Lake Cruise)	B3
Dataran Gemilang	B4
Dataran Pahlawan Negara	C2
Dataran Putra (Putra Square)	B3
Dataran Putrajaya	B4
Dataran Wawasan	B3
Istana Kehakiman (Palace of Justice)	B4
Istana Melawati	C2
Kiblat Walk	B3
Kompleks Seri Perdana (Prime Minister's Residence)	B2
Lake Putrajaya	A4
Marina Putrajaya	A4
Masjid Putra (Putra Mosque)	
Masjid Tuanku Mizan Zainal Abidin / Masjid Besi (Tuanku Mizan Zainal Abidin Mosque)	B3
Metropolitan Park	B3
Millennium Monument	B3
Moroccan Pavilion	B2
Nature Interpretive Centre	C2
Perdana Putra (Prime Minister's Office)	B3
Putra Bridge	B3
Putra Perdana Park	C2
Putrajaya Equestrian Park	B4
Putrajaya International Convention Centre (PICC)	B5
Putrajaya Lake Club	B3
Putrajaya Landmark	C3
Putrajaya Water Sports Complex	A4
Rimba Alam Park	D3
Seri Bakti Bridge	C3
Seri Bestari Bridge	C3
Seri Gemilang Bridge	B4
Seri Perdana Bridge	B2
Seri Satria (Deputy Prime Minister's Residence)	C3
Seri Saujana Bridge	B4
Seri Setia Bridge	B4
Seri Wawasan Bridge	B3
Skyrides Festival Park Putrajaya	B3
Taman Botani (Botanical Garden)	B2
Taman Cabaran	A5
Taman Saujana Hijau	B2
Taman Selatan	B5
Taman Warisan Pertanian (Agriculture Heritage Park)	C3
Taman Wetland (Wetland Park)	C2
Taman Wetland Lake Recreational Centre	C2
Nasyrul Quran Complex	D2
Putrajaya Challenge Park	D5

Dining

Alamanda	C3
Ayer@8	B3
D'Empangan Udang Galah	B4
Indus Cafe	A4
McDonald's McCafe	B3
Putrajaya Seafood Restaurant	B2
Umai Cafe	B3

Facilities

Ferry Terminal	B3
Heriot-Watt University	B4
Hospital Putrajaya	B3
Lanai	B2
Marine Police Station	B3
Pedestrian Bridge	B4
Pusat Kanser Negara	B4
Putrajaya Police Station	B2, B3, B4, C2
Putrajaya Sentral	A3
KLIA Ekspres and KLIA Transit	
Putrajaya Park and Ride	
Bus & Taxi Terminal	
Souq Bazaar	B3

Tourist Information Centre

i-Centre, Dataran Putra	B3
-------------------------	----

Hotel

Dorsett Putrajaya	B3
Zenith Hotel Putrajaya	B3
Pulse Grande Hotel	C2
The Everly Putrajaya	C3
Shaftsbury Stellar Putrajaya	C3
Mihrab Hotel	D2
DoubleTree by Hilton	B4

Legend

Built-up Area	
Field / Recreation	
River / Lake	
Expressway	
Major Road	
Secondary Road	
Railway Route & Station	
Place of Interest	
Tourism Malaysia Office	
Tourist Information Centre	
Hotel	
Shopping	
Dining	
Hospital / Clinic	
Fire Station	
Bus Station	
Taxi Station	
Post Office	
Library	
Sports Complex	
Important Landmark, University / College	
Place of Worship	
Jetty	

Malaysia

Situated in the heart of Southeast Asia, Malaysia is a vibrant destination with a diversity of cultures and traditions. This tropical paradise boasts pristine jungles and verdant national parks that are teeming with numerous species of birds and wildlife.

Malaysia's sun-drenched islands and beaches are home to a stunning range of marine life. Its natural wealth is complemented by magnificent modern landmarks and heritage buildings. There is something to charm every visitor, be it a history-lover, nature-enthusiast, sun-seeker or an avid shopper. Explore the length and breadth of the country to discover the many attractions of Malaysia!



Putrajaya

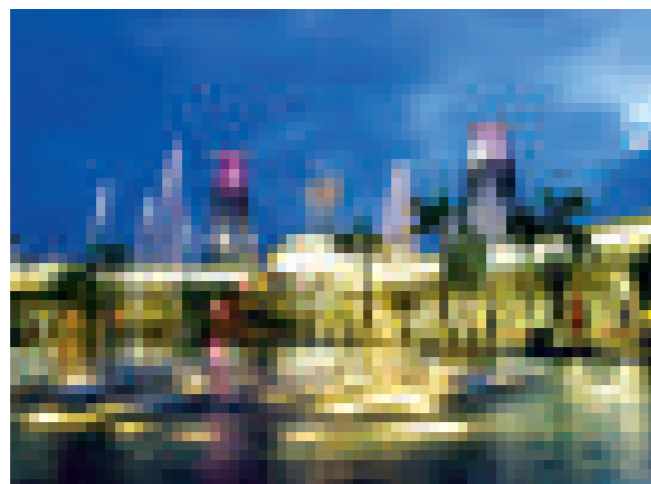
Putrajaya is situated about 28km from Kuala Lumpur and is easily accessible by road or train. The state-of-the-art KLIA Transit train provides easy access to Putrajaya from the KL Sentral Station (the city's transport hub). Visitors can also board the train from the Kuala Lumpur International Airport (Terminal 1) and Terminal 2 (the main entry points to Malaysia). The trains operate daily from 4.30am until midnight. From KL Sentral, the journey takes only 20 minutes with one stop along the way; at Bandar Tasik Selatan. From Terminal 1, the distance to Putrajaya/Cyberjaya is about 15 minutes. Visitors who are driving can use the Maju Expressway (MEX Highway) which connects Putrajaya to Kuala Lumpur. The journey takes less than one hour. Alternatively, RapidKL buses provide frequent services to the city.

GETTING THERE

Putrajaya is situated about 28km from Kuala Lumpur and is easily accessible by road or train. The state-of-the-art KLIA Transit train provides easy access to Putrajaya from the KL Sentral Station (the city's transport hub). Visitors can also board the train from the Kuala Lumpur International Airport (KLIA) Terminal 1 and KLIA Terminal 2 (the main entry points to Malaysia). The trains operate daily from 4.30am until midnight. From KL Sentral, the journey takes only 20 minutes with one stop along the way; at Bandar Tasik Selatan. From KLIA, the distance to Putrajaya/Cyberjaya is about 15 minutes. Visitors who are driving can use the Maju Expressway (MEX Highway) which connects Putrajaya to Kuala Lumpur. The journey takes less than one hour. Alternatively, RapidKL buses provide frequent services to the city.

GETTING AROUND

Nadi Putra buses ply almost every part of Putrajaya. The buses operate from Putrajaya Sentral, the main transport hub. Park and drive facilities are also available here. Alternatively, visitors can take a taxi from Putrajaya Sentral. Day tours are also available from Putrajaya Sentral.



SHOPPING

Putrajaya offers an interesting shopping experience. The main mall is Alamanda Putrajaya, which is situated in Precinct 1. It is the premier venue for shopping, dining and entertainment. Alamanda Putrajaya has over 160 tenants that are spread over two levels, making it easy for shoppers to move around the mall seamlessly. Anchor tenants are Parkson and Aeon Big. The Souq (situated at the Lower Level of the Putra Mosque) recreates the exotic experience of shopping in Persia. For a uniquely Malaysian experience, visit the numerous bazaars in Putrajaya. Some bazaars are held in public areas, while others are held in the vicinity of the government offices. Expect to find everything from food, fresh fruits to bags, accessories and clothes.



DINING

From alfresco eateries to air-conditioned restaurants, visitors are assured of a great variety of dining experiences. To try out local delights, head to Selera Putra Food Court at Precinct 1 or the Food Court at Precinct 8. To dine amidst a beautiful view, visit the Indus Putrajaya by Bora Ombak and Putrajaya Lake Club. Putrajaya FoodTrucks Hotspot offers more choices for foodies on-the-go. More dining is available in Galleria PJH, Selera Laman Perdana Precinct 1, Ayer@8, Precinct 9 and Alamanda Putrajaya.



PLACES OF INTEREST



PUTRAJAYA WETLAND

Putrajaya Wetland is the first man-made wetland in Malaysia and the largest constructed freshwater wetland in the tropics. It is divided into two parts, Taman Wetland and a Lake Recreational Centre. Home to plants, invertebrates, frogs, reptiles, fish and water birds, the wetland is a must-see attraction for nature lovers and environmentalists. Don't miss the Lookout Tower, Nature Interpretive Centre, nature trails and flamingo ponds. Tel: 03 888 7774



KOMPLEKS SERI PERDANA

Kompleks Seri Perdana is the official residence of the Prime Minister of Malaysia. Located on 42.5 acres of undulating and beautifully landscaped grounds, the building complex consists of three blocks with reception, banquet and residential facilities.

www.seriperdana.gov.my



TAMAN BOTANI (BOTANICAL GARDEN)

Spread over an area of 92 hectares, this is the largest botanical garden in Malaysia. It is divided into three sections, namely flowers, ornamental plants as well as preservation/research. More than 700 species of plants from Malaysia and other parts of the world can be found here. In addition to attractions such as the explorers' trail, vine garden and palm hill, there is also a gift shop selling environmentally-friendly souvenirs. Tel: 03 8887 7770



DATARAN PAHLAWAN NEGARA (THE NATIONAL HEROES SQUARE)

The National Heroes Square is a monument and war memorial in Putrajaya, Malaysia. The memorial, located at Precinct 1, was built to replace the National Monument (Tugu Negara) in Kuala Lumpur as a venue to commemorate Warriors Day (Hari Pahlawan), an occasion to honour fallen war heroes. The Heroes Square is laid down in a similar pattern to that of Horse Guards Parade in London.



MOROCCAN PAVILLION

Located within the Botanical Gardens, the Moroccan Pavilion is designed to showcase the rich arts and architecture of Morocco. The master plan follows the Moroccan tradition of movement from the public to private realms through gardens. The water channel was designed to represent the link between the countries of Morocco and Malaysia. It makes a perfect background for photoshoot and filming.



PERDANA PUTRA

With its distinctive green dome, the Prime Minister's Office Complex has become an icon in Putrajaya. Built in 1997, the complex houses the offices of the Prime Minister, his Deputy as well as several other government departments and agencies. The complex incorporates various architectural influences, including European, Islamic and traditional Malay.



MASJID PUTRA (PUTRA MOSQUE)

Located next to Perdana Putra, this is the principal mosque in Putrajaya. Built with rose-tinted granite that gives it its distinctive colour, the mosque can accommodate 15,000 worshippers at one time. An interesting feature of the mosque is the Sahn or courtyard, which is landscaped with decorative water features to provide a soothing feel.



DATARAN PUTRA (PUTRA SQUARE)

Dataran Putra or Putra Square is located opposite Perdana Putra. The square is actually two concentric plazas, divided into star-shaped segments that represent the states in Malaysia. An interplay of paths, water channels, flower beds and trees makes the square a picturesque spot for visitors. The newest landmark here is the 22 m stainless steel signage of Putrajaya that has become a huge attraction for tourists and photography enthusiasts. Tel: 03 8887 7690 / 3000



CRUISE TASIK PUTRAJAYA (LAKE CRUISE)

Visitors can embark on a leisurely cruise to take in the breathtaking sight of the city's landmarks. Two different modes of transportation are available, a passenger cruise boat, or gondola-like vessels that resemble a traditional Malay perahu. Daun is a luxury dining cruise boat that comes with the trimmings of a five-star restaurant, so passengers can dine in style while enjoying the view. Tel: 03 8881 0648



PUTRAJAYA BRIDGES

Putrajaya consists of eight signature bridges i.e Putra, Seri Perdana, Seri Saujana, Seri Gemilang, Seri Wawasan, Seri Bakti, Seri Bestari and Seri Setia. These bridges are built to link various parts of the city separated by the sprawling network of lakes. These bridges are popular among nature-lovers, photo buffs, joggers and cyclists especially at dawn or night when it is beautifully lit up.



TAMAN SAUJANA HIJAU

The 41-hectare Taman Saujana Hijau is located in the northwest corner of Putrajaya in Precinct 11, with unique landscapes using lush green conifers and pine trees offering a slightly less tropical feel for its visitors. The expansive park is divided into 3 zones: a European Garden, an Oriental Garden and an English Garden. The rolling hills and ridges also make this park a very popular place for runners and cycling enthusiasts.



TAMAN WARISAN PERTANIAN (AGRICULTURE HERITAGE PARK)

Located in Precinct 16, this park showcases Malaysia's commercial crops as well as agricultural practices. More than 170 different types of trees and plants can be viewed, including rubber, oil palm, cocoa, pepper, fruits, herbs and spices. Visitors can learn all about rubber planting and processing, and sample fresh fruits from the orchard. Tel: 03 8887 0099



MILLENNIUM MONUMENT

Standing at 68 m, this monument makes a commanding sight. It rises majestically from a 25-hectare park in Precinct 2. Constructed of solid metal, this national monument is uniquely shaped like an obelisk with etchings denoting important milestones and periods in the nation's history. At night, it serves as a beacon with lights projected at 360 degrees. It is visible from various locations in Putrajaya. Tel: 03 8887 0099



MASJID TUANKU MIZAN ZAINAL ABIDIN / MASJID BESI (TUANKU MIZAN ABIDIN MOSQUE)

Located in Precinct 3 opposite the Palace of Justice, this is the second principal mosque in Putrajaya. It was officially opened by the 13th Yang di-Pertuan Agong or King of Malaysia, Tuanku Mizan Zainal Abidin, in 2010. Built to accommodate 24,000 worshippers, the mosque employs "architectural wire mesh" and fine glass to create the illusion of a silvery white metallic structure. Tel: 03 8887 0099



ISTANA KEHAKIMAN (PALACE OF JUSTICE)

This imposing and majestic five-storey building houses the nation's Federal Court and Court of Appeal. Its design incorporates classical Islamic and Western design influences, creating an interesting facade. Its expansive courtyard has been the venue of many national events including the Colours of Malaysia cultural extravaganza.



NASYRUL QURAN COMPLEX

Nasyrul Quran Complex is the second largest Quranic printing centre in the world. It is developed on 5,514 acres of land in Precinct 14. The name Nasyrul Quran is inspired by the Arabic word which means "the spread of the Quran". This complex has exhibition galleries, a skills training area, meeting rooms, prayer room, cafeteria, as well as a viewing gallery of the printing process.



MARINA PUTRAJAYA

Situated adjacent to Putrajaya Water Sports Complex, Marina Putrajaya offers a wide range of watersports. Hover over the waters on a flyboard, experience stand up paddling on the lake and try the first water jetpack experience in Putrajaya or even ride an e-scooter around the lake. The watersport centre is located at Level B1, Marina Putrajaya.



TAMAN CABARAN (PUTRAJAYA CHALLENGE PARK)

Sprawling across 30 hectares of land, this park is touted to have the largest indoor climbing gym in Southeast Asia. The park offers climbing facilities and services for all levels of climbers. It is situated in Precinct 5. Tel: 03 8887 7538 / 03 8887 8443



PUTRAJAYA EQUESTRIAN PARK

Located in the southeast section of Precinct 5, the park is spread over 70 acres at the edge of the hilltop where the Putrajaya International Convention Centre is perched. The Equestrian Park provides a great environment for riders to hone their horse riding skills. It also offers activities such as horse riding lessons, outride, easyride and joyride coupled with escorted hacking and private photoshoot sessions with the beautiful horses. Stable tour is also available for public and students of all ages. Tel: 03 8000 8902



PUTRAJAYA INTERNATIONAL CONVENTION CENTRE (PICC)

Putrajaya International Convention Centre is Malaysia's largest convention centre. It features a unique design, based on the eye of Pending Perak or Malay royal belt buckle. Taking up an area of 135,000 sq m, this impressive convention centre has more than 49 halls and can accommodate more than 12,000 people. Tel: 03 8887 6000