



# Soil Burn Severity

Blue Lake BAER - Okanogan-Wenatchee National Forest

## Soil Burn Severity

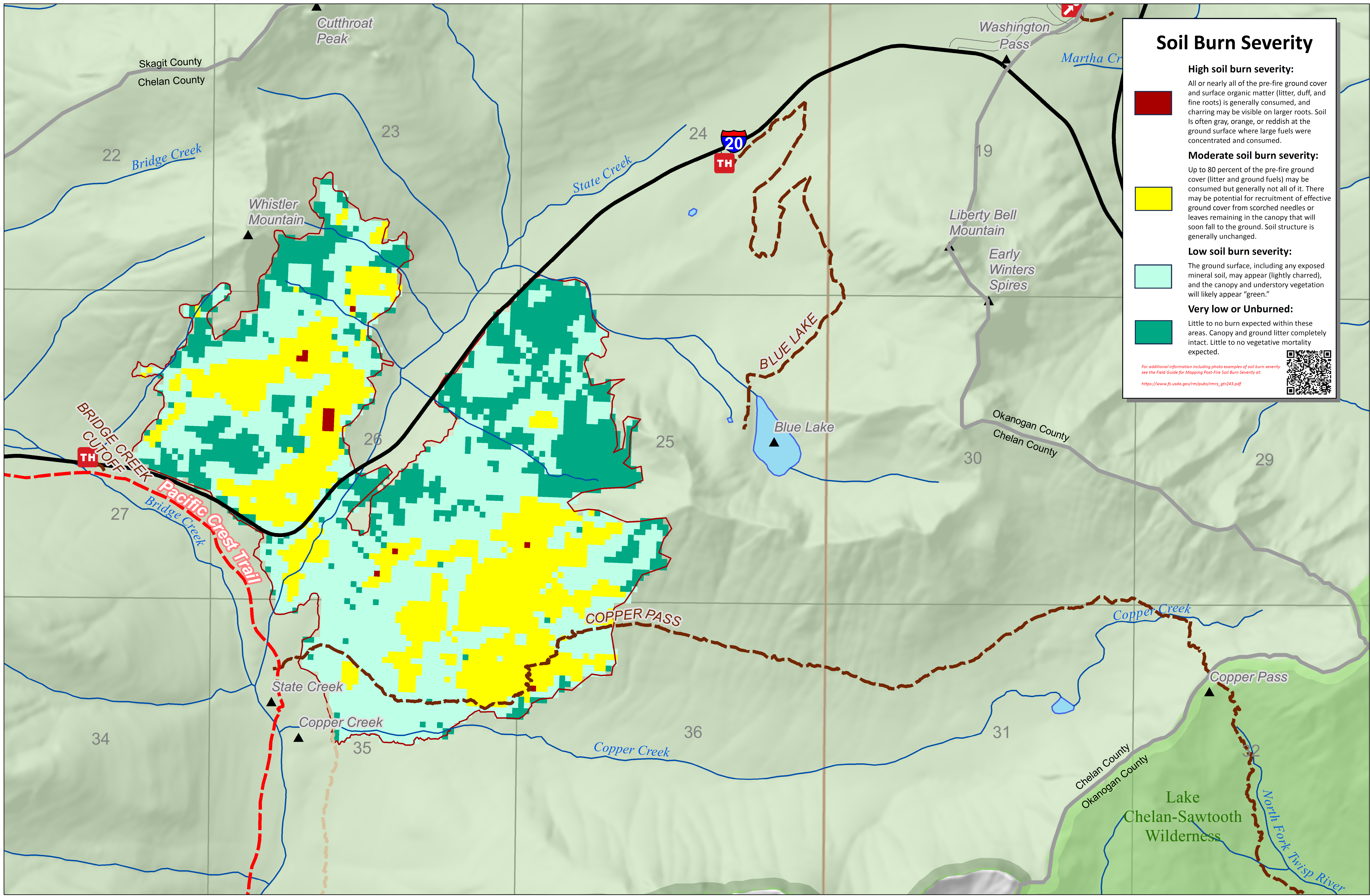
**High soil burn severity:**  
 All or nearly all of the pre-fire ground cover and surface organic matter (litter, duff, and fine roots) is generally consumed, and charring may be visible on larger roots. Soil is often gray, orange, or reddish at the ground surface where large fuels were concentrated and consumed.

**Moderate soil burn severity:**  
 Up to 80 percent of the pre-fire ground cover (litter and ground fuels) may be consumed but generally not all of it. There may be potential for recruitment of effective ground cover from scorched needles or leaves remaining in the canopy that will soon fall to the ground. Soil structure is generally unchanged.

**Low soil burn severity:**  
 The ground surface, including any exposed mineral soil, may appear (lightly charred), and the canopy and understory vegetation will likely appear "green."

**Very low or Unburned:**  
 Little to no burn expected within these areas. Canopy and ground litter completely intact. Little to no vegetative mortality expected.

For additional information including photo examples of soil burn severity see the Field Guide for Mapping Post-Fire Soil Burn Severity at: <https://www.fs.usda.gov/rm/pubs/mmr/gr243.pdf>



**Disclaimer**  
 This map is a product of the Blue Lake BAER assessment. The data used in this map were derived from the National Fire Inventory and Reporting System (NFIRS) and the National Fire Plan (NFP) data. The data were processed and analyzed by the Forest Service. The Forest Service makes no warranty, expressed or implied, regarding the accuracy, reliability, or completeness of the information provided. The data are provided "as is" and the user is responsible for verifying the accuracy of the information for their intended use. The data are provided for informational purposes only and are not intended to be used as a basis for any legal or financial decision. The user is responsible for verifying the accuracy of the information for their intended use. The data are provided for informational purposes only and are not intended to be used as a basis for any legal or financial decision. The user is responsible for verifying the accuracy of the information for their intended use.

- Blue Lake Fire Perimeter
- Pacific Crest Trail
- Highways
- NHD Flowline
- Wilderness
- Sections
- Mountain Features
- Trails
- ML 3 - Suitable for passenger cars
- Lake/Pond
- Okanogan-Wenatchee National Forest
- Townships
- Observation Site
- Non FS Trails
- ML 4 - Moderate Degree of user comfort
- County Boundary

