



Assistive TECHNOLOGY

Tips and Resources for Funding and Technical Assistance

Whether it's communication, recreation, employment, education, transportation or just plain daily living, technology levels the playing field for children and adults with disabilities. And, because technology is such a natural part of everyday life for everyone, the options for devices and apps are as numerous and diverse as the individuals who use them. Here are a few tips and resources to get you started:

TIPS

Identify the task first. Device Second. There are a lot of options out there, and no one device is right for every individual.

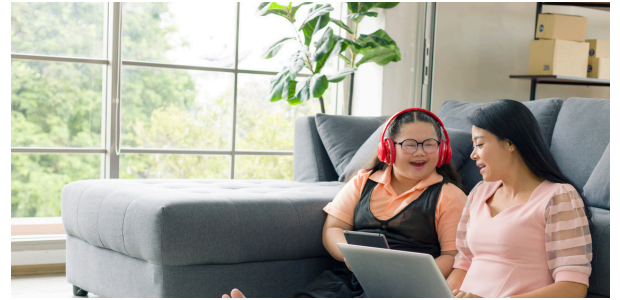
Get an AT Assessment. If your child is in school, ask for an AT evaluation as part of the IEP process (see inset below). For adults, contact one of the appropriate resources to the right.

Try Before You Buy. Make sure the device and/or apps are right for your son or daughter. The Washington Assistive Technology Alliance Program will loan devices for up to six weeks for a small fee.

Assistive Technology in the Schools:

Each school district shall ensure that assistive technology devices or assistive technology services, or both, are made available to a student eligible for special education if required as part of the student's:

- Special Education
- Related Services; or
- Supplementary aids or services
- On a case-by-case basis



RESOURCES

Division of Vocational Rehabilitation

Short-term employment services for adults. In addition to adults with disabilities, high school transition students are eligible for services. Visit <https://www.dshs.wa.gov/dvr>.

Developmental Disabilities Administration The Children's In-Home Intensive Behavior Support waiver and Individual & Family Services Program both include assistive technology in their covered services. Visit <https://www.dshs.wa.gov/dda>.

Division of Vocational Rehabilitation Short-term employment services for adults. In addition to adults with disabilities, high school transition students are eligible for services. Visit <https://www.dshs.wa.gov/dvr>.

Washington Assistive Technology Act Program Information, referrals, training and device loans. Visit <https://watap.org>

Northwest Access Fund Low interest loans and matched savings accounts for low-income households. Visit <https://www.nwaccessfund.org/>.

Work Incentive Programs The cost of work-related expenses, such as AT, may be offset by Social Security work incentive programs PASS and IRWE. Ask your DDA or DVR case manager for more information.

Distance-Based Observation and Reporting

DBOR is a part of the Assistive Technology (AT) waiver service from DDA. AT is available on all five waiver programs when a waiver participant requires technology in order to receive waivers-funded remote supports.

