



EATON HIGH SCHOOL

2024-2025

COURSE DESCRIPTION HANDBOOK

EDUCATE

EMPOWER

ENRICH

PREFACE STATEMENT

This curriculum guide has been designed in order for students, parents, teachers, counselors, and administrators to gain a better understanding and working knowledge of registration, graduation requirements, course offerings, and curriculum at Eaton High School.

EHS Vision Statement

*Eaton High School creates a safe and inclusive environment that educates and empowers global citizens through the **E.A.T.O.N.** values.*

E - Excellence

A - Awareness

T - Tenacity

O - Ownership

N - Noteworthy

EATON HIGH SCHOOL

1661 Collins Street

Eaton, CO 80615

Main Office – 970-454-3374

Counseling Office – 970-454-5158

In compliance with Title VI & VII of the Civil Rights Act of 1964, Title IX of the Education Amendments of 1972, Section 504 of the Rehabilitation Act of 1973, the Age Discrimination in Employment Act of 1967, the Americans with Disabilities Act, the Genetic Information Nondiscrimination Act of 2008, and Colorado law, Eaton School District does not unlawfully discriminate on the basis of race, color, sex, religion, national origin, ancestry, creed, age, marital status, services in admissions, access to, treatment, or employment in educational programs or activities which it operates.

Complaints regarding violations of Title VI, (race, national origin), Title IX (sex/gender), Section 504/ADA (handicap or disability), may be filed directly with the Office for Civil Rights, U.S. Department of Education, 1244 North Speer Blvd., Suite 310, Denver, CO 80204. Complaints regarding violations of Title VII (employment) and the ADEA (prohibiting age discrimination in employment) may be filed directly with the Federal Office of Equal Employment Opportunity Commission, 303 E. 17th Ave., Suite 510, Denver, CO 80202, or the Colorado Civil Rights Commission, 1560 Broadway, Suite 1050, Denver, CO 80202.

Table of Contents

Introduction.....	4
Develop a Plan.....	4
College Admissions Requirements.....	4
Registration.....	4
Course Load.....	5
Class Changes.....	5
Select Your Courses.....	6
Weighted Courses & Grading Scales.....	6
Concurrent Enrollment Program.....	6
Dual Enrollment Courses.....	7
Career Academy Opportunities.....	8
Graduation Requirements.....	9
EHS Graduation Requirements (Class 2025).....	10
EHS Graduation Requirements (Class of 2026 & 2027).....	11
EHS Graduation Requirements (Class of 2028 & Beyond).....	12
Graduation Values (Class of 2028 & Beyond).....	13
Colorado Career Cluster Model.....	59

Departments

Section I: Agriculture Education.....	16
Section II: Business & Technology.....	21
Section III: Construction Technology (P-Tech).....	25
Section IV: English.....	28
Section V: Family & Consumer Sciences.....	32
Section VI: Fine Arts.....	34
Section VII: Mathematics.....	41
Section VIII: Physical Education & Health.....	46
Section IX: Science.....	48
Section X: Social Studies.....	50
Section XI: Special Programs.....	53
Section XII: STEM Program.....	54
Section XIII: World Language.....	57

Introduction

The information in this guide is provided for you, the students of Eaton High School. We strongly encourage you to study this publication prior to registration and consult with your parents, school counselors and your advisor in devising your plan of study.

Develop a Plan

You have a variety of courses to choose from in the secondary curriculum. You need to develop a careful, long-range plan. Consider your future goals. Find out from the counselor the requirements of colleges, universities, apprenticeships programs, or employment opportunities that you might consider. Remember that competition will be a factor and you should get the strongest background possible. Learn more about using the resources in the counseling office at the high school. You are about to make serious decisions that will affect your potential to achieve your goals. We sincerely recommend that you discuss them with your parents, your advisor and your school counselor.

Colorado Higher Education Minimum Admission Requirements

Colorado has established Higher Education Admission Requirements for students who plan to attend a four-year public college or university in Colorado. The requirements help to ensure academic preparedness and place students on the path to college success.

Private colleges and universities set their own admission standards. Please contact those institutions directly for information regarding specific enrollment policies. Additionally, two-year public colleges have an open enrollment policy which means that students applying to these schools do not need to meet the following admission requirements.

Students planning to attend a four-year public college or university in Colorado will need to complete the following classes in order to fulfill the Higher Education Admission Requirements.

For more information about the Higher Education Admission Requirements call the [Colorado Commission on Higher Education](http://www.collegeboard.com/ceh) at 303-866-2723.

Academic Area	2010+ Graduates
English	4 Years
Mathematics (Algebra 1 and Above)	4 Years
Natural/Physical Sciences (2 years must be lab-based)	3 Years
Social Sciences (Must include 1 year of U.S. or World History)	3 Years
World Language	1 Year
Academic Electives	2 Years

N = Foundation Knowledge & Skills **B** = Ag & Natural Resources **G** = STEM, Arts, Design & Industrial Technology
O = Skilled Trade & Technology Science **Gr** = Health Science & Public Safety **P** = Hospitality, Human Services & Education
R = Business & Public Administration

Registration

Registration will be held in late January and February for upcoming 9th, 10th, 11th, and 12th grade students. Understanding the importance of registration, students will need to work closely and cooperatively with parents, teachers, counselors, and/or administrators. Registration is structured to serve a three-fold purpose. First, the student is to develop or update his/her four-year plan. Second, registration enables the student body to collectively select classes for the following year. Third, through analyzing the students' requests, the process of registration enables the school to build a course schedule, set class sizes, make teacher assignments, and prepare facilities and supplies for the upcoming school year. It is necessary then that student pre-registration for the upcoming year be considered as **FINAL** in order to provide an adequate schedule of classes for students. **Therefore, few schedule changes will be made once the student's schedule is created.**

Both the student and the school have a responsibility in the registration process to facilitate a degree of student flexibility in an effective manner. The student has the responsibility to select classes and build a schedule most appropriate to his/her needs. The school's responsibility is to build a schedule based on students' requests with the least number of conflicting classes. However, because of our school size, there may be some conflicts and students may have to choose courses and teachers that they might not want. Spend considerable time and thought on the following:

- Examine the programs of instruction and compare the required course work and electives.
- Know the requirements for graduation.
- Determine a program of instruction based on your Individual Academic & Career Plan (ICAP) through [Pathful](#).
- Speculate on future vocational and education goals. Be flexible yet realistic in your projections. Base your decision (selections) on the most demanding program and your identified career cluster.
- Complete the registration process in Infinite Campus.
- Students not completing the registration process will be registered by the counseling staff.

These selections will be at the convenience of the school, not the student.

Course Load: All students in grades 9-11 must enroll in a minimum of 8 units of credit during the school year. Grade 12 students must enroll in a minimum of 6 classes during the fall semester. Exceptions are those students who attend AIMS or UNC and students enrolled in work-based learning. Course load requirements for special situations may be appealed through the administration. Students are reminded they must be enrolled in 3 units of credit, or 6 classes per semester to be eligible to compete in athletics.

Class Changes: All course changes require the signatures of all teachers involved, the student's parents, and a counselor. **A student wishing to drop a class must consult with the teacher before presenting the problem to the counselor and submit a Schedule Change Form.** A class being dropped must have a teacher signature on the drop/add form and a teacher signature for an added class.

Select Your Courses

Your program should include courses that will meet the graduation requirements of Eaton High School, prepare you for your educational and occupational goals, and provide opportunities to develop new interests. Think about the following questions as you begin to select your courses:

- What are my goals?
- What are my strengths, abilities, and needs?
- What are my requirements for the type of work or college that I am considering?
- Are the courses I am selecting appropriate for my identified Career Cluster and do they align with my ICAP?

Your school counselor can help you plan by analyzing your test scores and your record of past achievements and by discussing with you your interests after graduation. Your school counselor also has the most up-to-date information available about various training programs and schools, colleges and universities, and employment possibilities.

Weighted Courses & Grading Scales

Eaton High School has a weighted grading system to reward students who pursue advanced academic courses. Students who take weighted courses will be ranked on the following grade point average scale:

A = 4.5 Quality Points

B = 3.5 Quality Points

C = 2.5 Quality Points

D = 1.5 Quality Points

F = 0 Quality Points

Eaton High School's Honors Courses (graded on a 4.5 scale)

These courses are part of Eaton High School's rigorous curriculum. The courses tend to move at a faster pace than their non-honors counterparts and are identified below:

- Honors Geometry
- Honors Algebra 2
- Honors Biology
- Human Anatomy & Physiology
- Physics
- Psychology
- Spanish 3
- School-based Enterprises

Concurrent Enrollment Program

In May 2009, Colorado State Legislature passed HB09-1319 and SB09-285 (hereafter the "Concurrent Enrollment Programs Act" or CRS 22-35-101 et seq). The collective intent is to broaden access to and improve the quality of concurrent enrollment programs, improve coordination between the state's high schools and institutions of higher education, and ensure financial transparency and accountability and to reward high school students who pursue challenging college-level course work. For updated information please visit the following link: https://www.cde.state.co.us/postsecondary/ce_legislation

Students in 9th, 10th, 11th, and 12th grades may qualify to concurrently enroll in postsecondary courses if the student:

- Has received approval for their academic plan of study;
- Applied for concurrent enrollment approval no later than sixty days before the end of the academic term that immediately precedes the intended term of concurrent enrollment;
- Met the minimum prerequisites for the course (students need not meet all Higher Education Admission Requirements [HEAR])

N = Foundation Knowledge & Skills **B** = Ag & Natural Resources **G** = STEM, Arts, Design & Industrial Technology
O = Skilled Trade & Technology Science **Gr** = Health Science & Public Safety **P** = Hospitality, Human Services & Education
R = Business & Public Administration

Concurrent Enrollment Courses

Concurrent Enrollment is defined as pre-approved coursework taken by high school students on a college campus which allows students to earn high school and college credit. Traditionally, Concurrent Enrollment classes are not included on a weighted grading scale. If a student is seeking a weighted grade for a Concurrent Enrollment course, the appropriate paperwork must be submitted to the principal thirty (30) days prior to the start date of the course. In addition, the course must meet or exceed the rigor presented in Dual Enrollment courses taught on the Eaton High School campus. This is only available beginning with the class of 2019 and beyond.

Eaton High School Dual Enrollment Courses (graded on a 4.5 scale)

In collaboration with Aims Community College, courses are taught on Eaton High School's campus, by Eaton High School instructors, but the curriculum belongs to the higher learning institutions (as designated). Students earn high school credit as well as college credit

BIO 1111 Gen College Biology I w/Lab (5 college credits)

ENG 1021 College Composition I (3 college credits)

ENG 1022 College Composition II (3 college credits)

ENG 1031 Technical Writing (3 college credits)

HIS 1210 US History to Reconstruction (3 college credits)

HIS 1220 US Hist Since Civil War (3 college credits)

LIT 1015 Intro to Literature (3 college credits)

MAN 2000 Human Resource Management (3 college credits)

MAT 1340 College Algebra (4 college credits)

MAT 1420 College Trigonometry (3 college credits)

MAT 2410 Calculus I (5 college credits)

SPA 1011 Spanish Language I (5 college credits)

Eaton High Schools Dual Enrollment Courses continued (graded on a 4.0 scale)

ACC 1001 Fundamentals of Accounting (3 college credits)

AEC 1200 Print Reading Res/Commercial (3 college credits)

AEC 1520 Construction Material/Systems (3 college credits)

AEC 2550 Building Electrical/Mechanical Systems (3 college credits)

AEC 2660 Construction Safety & Loss Prevention (2 college credits)

AEC 2700 International Building Codes (3 college credits)

AGE 1102 Agriculture Economics (3 college credits)

AGE 2110 Agriculture Marketing (3 college credits)

ASC 1100 Animal Science (3 college credits)

CAR 1000, 1001, 1002 Construction Technology 1-A (3 college credits)

CAR 1005 & 1070 Construction Technology 1-B (3 college credits)

MAR 2016 Principles of Marketing (3 college credits)

Aims Community College Career Academy Opportunities

Get a head start on your college career by taking college Career & Technical Education (CTE) classes and earn certificates while you're still in high school.

What is Career Academy?

Career Academy is a form of Concurrent Enrollment that provides you with the opportunity to take college classes while still in high school and to receive dual credit. However, it differs from the Concurrent Enrollment program in a number of ways. These opportunities are for **JUNIORS AND SENIORS ONLY**.

As a Career Academy student, you are able to take outlined college courses to earn certificates in the participating CTE programs, free of charge. The cost of tuition, fees and course materials are paid for by your school district, therefore the program is often described as a scholarship program. ****Note: Students must receive a final grade of at least a "C" in each course or the family will be responsible for reimbursing Eaton School District Re-2 for the cost of tuition, fees, books, supplies and other learning materials in the program.** There is a minimum one-year commitment (two semesters, although some programs are longer). Classes are offered at the Aims campuses in Greeley, Windsor, and Ft. Lupton, depending on the program or class. You must provide your own transportation to and from your courses. Upon graduation from high school, you can continue with your college career ahead of others and/or begin working at entry-level jobs in many of those fields.

How to get started?

- Ask your high school counselor about Career Academy opportunities.
- Find out if you qualify to participate, per Eaton School District Re-2 guidelines.
 - These programs/opportunities are huge commitments so it is for students who are 100% wanting to be in those fields. Students must have good attendance and grades at EHS. Students can only miss two classes per semester at Aims. Juniors must have at least 17 credits if on Honors and 16 credits if on non-honors by the end of their sophomore year. Seniors must have at least 23 credits if on Honors and 22 credits if on non-honors by the end of their junior year.
- To be considered, you must also apply to Aims Community College and get an A number (Student number from Aims). Apply at www.aims.edu.
- Attend Career Academy Day at Aims in the spring. This is a great way to find out if the program is a right fit for you. *Career Academy Applications will be available at the Career Academy Day.*
- Complete the Career Academy Application, including student and parent/guardian signatures, and submit it to your high school counselor. Students will need 2-3 letters of recommendation from teachers. Applications will be due each **March**.
- Students must also be able to have their own transportation. EHS does not provide transportation for these programs once enrolled.

Programs available during the 2024-2025 school year include (subject to change by Aims):

Air Traffic Control
Audio Production
Automotive Collision Repair
EMT
Exercise Specialist Certificate
General Aviation Pilot
Health & Exercise Specialist Certificate
Health & Fitness Certificate
Master Automotive Service Technology
Med Prep (Nursing-focused)
Professional Pilot
Unmanned Aircraft Systems (UAS) Sciences
Welding Technology

N = Foundation Knowledge & Skills **B** = Ag & Natural Resources **G** = STEM, Arts, Design & Industrial Technology
O = Skilled Trade & Technology Science **Gr** = Health Science & Public Safety **P** = Hospitality, Human Services & Education
R = Business & Public Administration

Graduation Requirements

Beginning with the class of 2021, districts must ensure that their requirements for graduation meet or exceed the guidelines established by the state of Colorado. In order to meet the state requirements, students must demonstrate college and career ready competency in English and Math. Eaton School District feels the best way to ensure that students are prepared for life after high school is to have them complete a robust course sequence of curricula aligned to the Colorado state standards and embedded with the skills necessary for success (Critical Thinking & Reasoning, Information Literacy, Collaboration, Self-Direction, and Innovation/Invention). Students who complete these courses will have the confidence and ability to demonstrate their mastery/competency in the two state required areas of English and Math.

Beginning with the graduating class of 2021, Eaton High School students must demonstrate mastery of the standards and skills through a combination of earned credits and competency-based measurements.

Graduates will complete 29 credits in grades nine through twelve in the prescribed categories listed below. Completion of the requirements and goals as listed on a student's Individualized Education Plan (IEP) which may include modified content standards.

In addition, students must demonstrate college and career ready competency in English and Math in at least one category from the menu of options below. Student's on an Individualized Education Plan (IEP), an Advanced Learning Plan, or an English Acquisition Plan may have modified requirements for demonstrating competency.

Demonstration of College and Career Readiness in English and Math

Students must show competency by meeting the minimum requirements in at least one from the options below in both English and Math in order to graduate.

Menu of Options	English Meet the requirements from one of the choices below.	Math Meet the requirements from one of the choices below.
SAT	470	500
ACT	18	19
ASVAB	31 (AFQT score)	31 (AFQT score)
Concurrent Enrollment	C or above in any of the following: ENG 1021 College Composition I ENG 1022 College Composition II ENG 1031 Technical Writing I LIT 1015 Introduction to Literature	C or above in any of the following: MAT 1340 College Algebra MAT 1420 College Trigonometry MATH 2410 Calculus I
Advanced Placement	2 on AP Composition/Literature	2 on AP Calculus
Classic Accuplacer	62 on Reading Comprehension or 70 on Sentence Skills	61 on Elementary Algebra
Next Generation Accuplacer	241 on Reading or 236 on Writing	255 on Arithmetic (AR) or 230 on Quantitative Reasoning, Algebra, and Statistics (QAS)
District Capstone	Students taking a Capstone class will use their Individual Career & Academic Plan (ICAP) to develop a Capstone Project or Experience that demonstrates they are ready for the next step in their chosen career pathway. Each Capstone (District, Business, Agriculture, FCS, Art, or English 12) must demonstrate mastery of the Colorado 21st Century Skills (Critical Thinking & Reasoning, Information Literacy, Collaboration, Self-Direction, and Invention).	
Industry Certificate	An industry certificate may be obtained by the student either by earning a certificate through an accredited post-secondary institution or by passing a test administered by a nationally recognized credentialing organization. Students planning to use an industry certification to meet competency requirements must have prior approval of the principal. Examples include the following, but are not limited to: Nurse Aide Certificate (CERT NA01, Aims CA) Basic Construction Methods (CERT CM19, Aims CC) Basic Welding & Cutting Certificate (CERT WT09, Aims CA) Colorado Department of Fire Prevention & Control Certificate (CERT CDFPC, Aims CA) EMT Certificate (CERT EMT, Aims CA)	

N = Foundation Knowledge & Skills **B** = Ag & Natural Resources **G** = STEM, Arts, Design & Industrial Technology
O = Skilled Trade & Technology Science **Gr** = Health Science & Public Safety **P** = Hospitality, Human Services & Education
R = Business & Public Administration

Graduation Requirements for the Class of 2025

The RE-2 Board of Education and the State of Colorado have set forth the following requirements for graduation at Eaton High School. A high school diploma will be granted only upon completion of all these requirements. Twenty nine (29) credits are required. One (1) credit is earned for each year-long class successfully completed and one-half (1/2) credit is earned for successfully completing a semester course. An elective is any course which is NOT required for graduation. Students begin earning credits toward graduation with their entrance into the ninth grade.

Eaton High School Graduation Requirements	Eaton High School Honors Diploma Requirements
<p><u>English - 4 Credits</u></p> <p style="padding-left: 20px;">Survey of Language Arts 1 Credit</p> <p style="padding-left: 20px;">World Literature 1 Credit</p> <p style="padding-left: 20px;">Early/Modern or American Literature 1 Credit</p> <p style="padding-left: 20px;">(2) English Electives 1 Credit</p> <p style="padding-left: 20px;"><i>(At least .5 English credit must be taken in student's senior year)</i></p> <p><u>Mathematics – 3 Credits</u></p> <p>To include: Algebra IA, Algebra IB, Geometry, Honors Geometry, Algebra II, Honors Algebra II, College Algebra (MAT 1340), Precalculus (College Algebra, MAT 1340 & College Trigonometry, MAT 1420), Intro to Statistics, Calculus I (MAT 2410), or Financial Algebra</p> <p><u>Science – 3 Credits</u></p> <p style="padding-left: 20px;">Earth Science 1 Credit</p> <p style="padding-left: 20px;">General or Honors Biology 1 Credit</p> <p style="padding-left: 20px;">Science Elective 1 Credit</p> <p><u>Social Studies – 3 Credits</u></p> <p style="padding-left: 20px;">Civics/World Geography 1 Credit</p> <p style="padding-left: 20px;">World History 1 Credit</p> <p style="padding-left: 20px;">United States History 1 Credit</p> <p><u>Physical Education – 2 Credits</u></p> <p style="padding-left: 20px;">Freshmen Physical Education/Health 1 Credit</p> <p style="padding-left: 20px;">(2) PE Electives 1 Credit</p> <p style="padding-left: 20px;">Personal Finance or Intro to Business .5 Credit</p> <p style="padding-left: 20px;">Life Skills/Applied Arts 3 Credits</p> <p style="padding-left: 20px;">Fine Arts 2 Credits</p> <p style="padding-left: 20px;">World Language 1 Credit</p> <p style="padding-left: 20px;">Electives—in addition to those listed above 7.5 Credits</p> <hr style="width: 50%; margin-left: 0;"/> <p style="padding-left: 20px;">Total 29 Credits</p>	<p><u>English- 4 Credits</u></p> <p style="padding-left: 20px;">Survey of Language Arts 1 Credit</p> <p style="padding-left: 20px;">World Literature 1 Credit</p> <p style="padding-left: 20px;">Early/Modern or American Literature 1 Credit</p> <p style="padding-left: 20px;">(2) English Electives 1 Credit</p> <p style="padding-left: 20px;"><i>(At least .5 English credit must be taken in student's senior year)</i></p> <p><u>Mathematics & Science – 7 Credits</u></p> <p>Math to include: Algebra IB or higher</p> <p>Science to include: Earth Science, General Biology or Honors Biology, Chemistry</p> <p style="padding-left: 20px;"><i>(Students must take a combination of approved Math and Science classes to obtain 7 credits total)</i></p> <p><u>Social Studies – 4 Credits</u></p> <p style="padding-left: 20px;">Civics/World Geography 1 Credit</p> <p style="padding-left: 20px;">World History 1 Credit</p> <p style="padding-left: 20px;">United States History 1 Credit</p> <p style="padding-left: 20px;">(2) Social Studies Electives 1 Credit</p> <p style="padding-left: 20px;"><i>(At least .5 credit of Psychology, HIS 1210, or HIS 1220)</i></p> <p><u>Physical Education – 2 Credits</u></p> <p style="padding-left: 20px;">Freshmen Physical Education/Health 1 Credit</p> <p style="padding-left: 20px;">(2) PE Electives 1 Credit</p> <p style="padding-left: 20px;">Personal Finance or Intro to Business .5 Credit</p> <p style="padding-left: 20px;">World Language 3 Credits</p> <p style="padding-left: 20px;"><i>(All 3 credits must be in the same language)</i></p> <p style="padding-left: 20px;">Electives—in addition to those listed above 9.5 Credits</p> <hr style="width: 50%; margin-left: 0;"/> <p style="padding-left: 20px;">Total 30 Credits</p> <p style="text-align: center; padding-top: 10px;">****Students must maintain a 3.0 cumulative GPA to earn an honors diploma****</p>

N = Foundation Knowledge & Skills **B** = Ag & Natural Resources **G** = STEM, Arts, Design & Industrial Technology
O = Skilled Trade & Technology Science **Gr** = Health Science & Public Safety **P** = Hospitality, Human Services & Education
R = Business & Public Administration

Graduation Requirements for the Class of 2026 and 2027

The RE-2 Board of Education and the State of Colorado have set forth the following requirements for graduation at Eaton High School. A high school diploma will be granted only upon completion of all these requirements. Twenty nine (29) credits are required. One (1) credit is earned for each year-long class successfully completed and one-half (1/2) credit is earned for successfully completing a semester course. An elective is any course, which is NOT required for graduation. Students begin earning credits toward graduation with their entrance into the ninth grade.

Eaton High School Graduation Requirements	Eaton High School Honors Diploma Requirements
<p><u>English - 4 Credits</u> Survey of Language Arts 1 Credit World Literature 1 Credit American Literature 1 Credit (2) English Electives 1 Credit <i>(At least .5 English credit must be taken in student's senior year)</i></p> <p><u>Mathematics – 3 Credits</u> To include: Algebra IA, Algebra IB, Geometry, Honors Geometry, Algebra II, Honors Algebra II, College Algebra (MAT 1340), Precalculus (College Algebra, MAT 1340 & College Trigonometry, MAT 1420), Intro to Statistics, Calculus I (MAT 2410), or Financial Algebra</p> <p><u>Science – 3 Credits</u> Earth Science 1 Credit General or Honors Biology 1 Credit Science Elective 1 Credit</p> <p><u>Social Studies – 3.5 Credits</u> World Geography 1 Credit World History 1 Credit United States History 1 Credit Civics - 12th .5 Credit</p> <p><u>Physical Education – 2 Credits</u> Freshmen Physical Education/Health 1 Credit (2) PE Electives 1 Credit</p> <p>Personal Finance or Intro to Business .5 Credit</p> <p>Life Skills/Applied Arts 3 Credits</p> <p>Fine Arts 2 Credits</p> <p>World Language 1 Credit</p> <p>Electives—in addition to those listed above 7 Credits</p> <hr style="width: 50%; margin-left: 0;"/> <p>Total 29 Credits</p>	<p><u>English- 4 Credits</u> Survey of Language Arts 1 Credit World Literature 1 Credit American Literature 1 Credit (2) English Electives 1 Credit <i>(At least .5 English credit must be taken in student's senior year)</i></p> <p><u>Mathematics & Science – 7 Credits</u> Math to include: Algebra IB or higher Science to include: Earth Science, General Biology or Honors Biology, Chemistry <i>(Students must take a combination of approved Math and Science classes to obtain 7 credits total)</i></p> <p><u>Social Studies – 4 Credits</u> World Geography 1 Credit World History 1 Credit United States History 1 Credit Civics - 12th .5 Credit Social Studies Elective .5 Credit <i>(Psychology, History 1210, or History 1220)</i></p> <p><u>Physical Education – 2 Credits</u> Freshmen Physical Education/Health 1 Credit (2) PE Electives 1 Credit</p> <p>Personal Finance or Intro to Business .5 Credit</p> <p>World Language 3 Credits <i>(All 3 credits must be in the same language)</i></p> <p>Electives—in addition to those listed above 9.5 Credits</p> <hr style="width: 50%; margin-left: 0;"/> <p>Total 30 Credits</p> <p style="text-align: center;">****Students must maintain a 3.0 cumulative GPA to earn an honors diploma****</p>

Graduation Requirements for the Class of 2028 and Beyond

The RE-2 Board of Education and the State of Colorado have set forth the following requirements for graduation at Eaton High School. A high school diploma will be granted only upon completion of all these requirements. Twenty nine (29) credits are required. One (1) credit is earned for each year-long class successfully completed and one-half (1/2) credit is earned for successfully completing a semester course. An elective is any course which is NOT required for graduation. Students begin earning credits toward graduation with their entrance into the ninth grade.

Eaton High School **Graduation Requirements for Class of 2028 & Beyond**

English- 4 Credits

Survey of Language Arts	1 Credit
World Literature	1 Credit
American Literature	1 Credit
(2) English Electives	1 Credit

(At least .5 English credit must be taken in students senior year)

Mathematics – 3 Credits

To include: Algebra IA, Algebra IB, Geometry, Honors Geometry, Algebra II, Honors Algebra II, Financial Algebra, College Algebra (MAT 1340), Precalculus (MAT 1340 & College Trigonometry MAT 1420), Intro to Statistics or Calculus I (MAT 2410)

Science – 3 Credits

Earth Science	1 Credit
General or Honors Biology	1 Credit
Science Elective	1 Credit

Social Studies – 3.5 Credits

World Geography	1 Credit
World History	1 Credit
United States History	1 Credit
Civics - 12th	.5 Credit

Physical Education – 2 Credits

Freshmen Physical Education/Health	1 Credit
(2) PE Electives	1 Credit

World Language 1 Credit *(2 credits strongly advised)*

Personal Finance or Intro to Business .5 Credit

Life Skills/Applied Arts 1 Credit

Fine Arts 1 Credit

Electives—*in addition to those listed above* 10 Credits

Total 29 Credits

******Students must maintain a 3.0 cumulative GPA AND accumulate >120 points to earn an honors diploma distinction******
(See pages 13-15 for more information about course point values)

Graduation Values for the Class of 2028 and Beyond

Use the following guidelines to determine what courses in which departments to earn honors distinction upon graduation. **Students earning > 120 total points AND have a cumulative GPA of 3.0 or higher** will earn a Honors Diploma cord. All students will be recognized at graduation based on their cumulative GPA as follows:

Cum Laude = GPA: 3.5 - 3.69
 Magna Cum Laude = GPA: 3.7 - 3.89
 Summa Cum Laude = GPA: 3.9 - above

Survey of LA	1
World Lit	1
American Lit	1
Public Speaking	3
Creative Writing	3
Sports in Lit	2
Contemporary Reading	2
JW I	2
JW II	3-4
ENG 1021 English Comp I	4
ENG 1022 English Comp II	4
ENG 1031 Technical Writing	4
LIT 1015 Intro to Lit	4

**JW II earns 3 points 1st time taken, 4 points each time after*

World Geography	1
World History	1
US History	1
Civics	1
Contemporary Issues	2
US Military History	2
Psychology	4
HIS 1210 US History to Reconstruction	4
HIS 1220 US History since Civil War	4

Algebra IA	1
Algebra IB	1
Geometry	1
Honors Geometry	2
Financial Algebra	2/3
Algebra II	2/3
Honors Algebra II	2
Intro to Stats	3
MAT 1340 College Algebra	3
MAT 1340 & 1420 Precalculus	4
MAT 2410 Calculus	4

**Honors Geometry, Algebra II, Financial Algebra = 3 points if elected*

Earth Science	1
General Biology	2
Honors Biology	3
Chemistry	3
Physics	4
Human Anatomy & Physiology	4
Physical Science	2
BIO 1111 College Biology I w/ Lab	4

Spanish I	1
Spanish II	2
Spanish III	3
Spanish for Heritage Speakers I	1
Spanish for Heritage Speakers II	2
SPA 1011 Spanish Language I (Heritage Speakers III)	4
SPA 1011 Spanish Language I (Spanish IIII)	4

**Highly advise all students to take at least 2 years of Spanish*

N = Foundation Knowledge & Skills **B** = Ag & Natural Resources **G** = STEM, Arts, Design & Industrial Technology
O = Skilled Trade & Technology Science **Gr** = Health Science & Public Safety **P** = Hospitality, Human Services & Education
R = Business & Public Administration

Graduation Values for the Class of 2028 and Beyond

Intro to Agriculture	1
Principles of Ag. Pwr, Struct, & Tech. Syst.	2
Advanced Welding	3
Principles of Ag. Business	2
Principles of Natural Resource Management	2
Principles of Food Science & Production	2
Animal Production	3
Floriculture	3
Structure Design & Fab.	3
Metal Fab.	4
Ag. Engine Tech.	4
Plumbing & Electrical Install.	4
Horticultural Sciences	2
Greenhouse Production	3
Capstone in CTE	4
ASC 1100 Animal Sciences	4
AGE 2110 Ag. Marketing	4
AGE 1102 Ag. Economics	4

Principles of Construction	1
Construction Systems	3
Advanced Woodworking/Carpentry	4
Construction Tech IA/IB	2
AEC 1200 Print Reading Res/Commercial	3
AEC 1520 Construction Material/Systems	4
AEC 2550 Building Electrical/Mechanical Sys.	4
AEC 2600 Construction Safety & Loss Prevention	4
AEC 2700 Adv. Carpentry/International Codes	4

Personal Finance	1
Intro to Business	1
Ethical Leadership	1
Fundamentals of Accounting (ACC 1001)	2
Principles of Marketing (MAR 2016)	2
Graphic Design	3
Legal Environment of Business	3
Event Marketing/Communications	3
Human Resource Management (MAN 2000)	4
School-based Enterprise - Operations/Retail	4
Capstone in CTE	4
Work-Based Learning	4

Culinary Nutrition	1
Design Seminar	1
Child & Adolescent Development	1
Catering I	2
Catering II	2
Capstone in CTE	4

Principles of Engineering	1
Intro to Engineering	2
Digital Electronics	2
Robotics & Automated Systems	3
Intro to Coding	1
Coding I/Coding II	2
Coding III/IV	4
HTML & Web Design	4
Technology Intern	4

Graduation Values for the Class of 2028 and Beyond

Intro to Art	1
Studio Art I	2
Studio Art II	3
Advanced Art	4
Ceramics I	2
Ceramics II	3
Beginning Theatre	1
Advanced Theatre	2
Theatre Production	3-4
Tech in Performing Arts	1-2
Intro to Video & Film Production	1
Video & Film Production	2-4
Intro to Yearbook & Social Media	1
Yearbook	2-4
Concert Band	1-2
Wind Ensemble	4
Jazz Ensemble	4
Jazz Band	1-2
Marching/Pep Band	3-4
History of Rock & Roll	1
Music Theory I	2
Advanced Music Theory	4
Piano Lab	2-3
Men's Choir	1-2
Women's Choir	1-2
Bella Voce	3
Troubadours	4
Concert Choir	1

**Video Film/Production, Yearbook, Concert Band, Jazz Band, Marching/Pep Band, Men's & Women's Choir can be taken multiple times for a higher point value*

Freshman PE & Health	1
Individual Sports	2
Personalized Training	2
Team Sports	2
Female Fit Challenge	2-4
Male Fit Challenge	2-4
Advanced Strength & Conditioning	3-4

**Fit Challenge and Advanced Strength can be taken multiple times for higher point value each time*

Study Skills	1
Transitions	2
Math Interventions	1
Lit Interventions	1
English 12 Capstone	3
English Language Learners	1-2
Academic Accelerator	1

**ELL may be taken more than once for high point value*

Teacher's Aide	.5
----------------	----

**TA's may be taken multiple time, but only 1 point will be awarded total*

Aims Career Academy	8
---------------------	---

Off-campus College Courses	Pre-Approved by Admin (Policy IKF)
----------------------------	------------------------------------

****Edgenuity courses will be awarded based upon circumstances**

Section I: Agriculture Education

Introduction to Agriculture A & B

| B |

Course Length: Year Long	Prerequisite: None	Grade Level: 9, 10, 11, 12	Elective: Life Skills/Applied Arts	Level 1
-----------------------------	-----------------------	-------------------------------	---------------------------------------	---------

This is an introductory course for first year agriculture education students. This course introduces students to the foundational principles of agriculture, food, and natural resources. Students will gain knowledge in career development, leadership, personal development, communications, animal science, plant science, natural resources, food science, power/structure, and agribusiness.

Principles of Ag Power, Structure, & Technical System - A

| B |

Course Length: Fall Semester	Prerequisite: Introduction to Agriculture A & B	Grade Level: 10, 11, 12	Elective: Life Skills/Applied Arts	Level 2	Fees/Dues: \$25.00
---------------------------------	--	----------------------------	---------------------------------------	---------	-----------------------

This is an introductory course educating students to the basic skills and knowledge in construction and land management. This course covers topics including safety, project management, land site management, irrigation and drainage and agriculture structures and components. Upon completion of this course, proficient students will be prepared for more advanced coursework in agricultural mechanics. **** Must take with Advanced Welding Technology second semester**

Advanced Welding Technology - B

| B |

Course Length: Spring Semester	Prerequisite: Introduction to Agriculture A & B	Grade Level: 10, 11, 12	Elective: Life Skills/Applied Arts	Level 3	Fees/Dues: \$25.00
-----------------------------------	--	----------------------------	---------------------------------------	---------	-----------------------

This is an advanced course educating students in the advanced skills and knowledge in metal fabrication. Students will build on the skills and competencies presented in prerequisite courses. Students will learn cutting and welding applications of increasing complexity used in the manufacturing/metal fabrication industry. Students will be proficient in fundamental project management, quality control methods and further advanced welding/metal fabrication technology and processes. **** Must take with Principles of Ag Power, Structure, & Technical System first semester**

Principles of Ag Business A & B

| B | R |

Course Length: Year Long	Prerequisite: Introduction to Agriculture A & B	Grade Level: 10, 11, 12	Elective: Life Skills/Applied Arts	Level 2
-----------------------------	--	----------------------------	---------------------------------------	---------

In this course, students will be comparing and contrasting business models and identifying the advantages and disadvantages to owners and customers within the agribusiness chains. Students will show an understanding of basic record keeping skills and applications in an agribusiness. Components include the general journal, balance sheet, cash flow statements, financial statements, reconciliation of accounts, net worth, income statements, and profit and loss statements. Students will understand how these records can allow for business decisions within an agribusinesses or Supervised Agriculture Experience (SAE) program. Instruction includes the use of economic principles such as supply and demand, budgeting, depreciation, ag. finance, risk management, business law, and careers in agribusiness. Students will understand how these records can allow for business decisions within an agribusinesses or SAE program.

N = Foundation Knowledge & Skills **B** = Ag & Natural Resources **G** = STEM, Arts, Design & Industrial Technology
O = Skilled Trade & Technology Science **Gr** = Health Science & Public Safety **P** = Hospitality, Human Services & Education
R = Business & Public Administration

Principles of Natural Resource Management A & B

| B | O |

Course Length: Year Long	Prerequisite: Introduction to Agriculture A & B	Grade Level: 10, 11, 12	Elective: Life Skills/Applied Arts	Level 2
-----------------------------	--	----------------------------	---------------------------------------	---------

This is an introductory course for agriculture education students pursuing careers in Natural Resources and Environmental Sciences. This course expands student learning to the foundational principles of ecology including the fields of geology, meteorology, biology and chemistry related to the conservation, natural resources, and fish and wildlife management. Students will gain knowledge in career development, leadership, personal development, communications, and environmental science.

Principles of Food Science and Production

| B | P |

Course Length: Year Long	Prerequisite: Introduction to Agriculture A & B	Grade Level: 10, 11, 12	Elective: Life Skills/Applied Arts	Level 2
-----------------------------	--	----------------------------	---------------------------------------	---------

This course will teach students to apply principles of nutrition, biology, chemistry, and human behavior to the food we eat every day. This course entails refined skills in measurement, following recipes, interpreting food labels, and identifying safe storage and processing techniques. Students will also identify changes and trends in local and global food systems while understanding the selection, evaluation and inspection of existing food systems. Students will learn about the production and distribution channels of both animal and plant products while also recognizing the role of marketing in the food industry.

Animal Production A & B

| B | G |

Course Length: Year Long	Prerequisite: Introduction to Agriculture A & B and Biology	Grade Level: 10, 11, 12	Elective: Life Skills/Applied Arts or Science	Level 3
-----------------------------	---	----------------------------	---	---------

In this course, students will gain knowledge, skills, and understanding in a variety of systems of production as well as the care, management, and handling of livestock, and companion animal species. Students will learn about the following topics: nutrients and nutrition, types of feeds, balancing rations, herd health management, common diseases, parasites, disease treatment and prevention, reproductive management, routine administration techniques, and basic animal handling. Current animal agriculture issues will be researched and addressed. The scientific processes of observation, hypothesizing, data gathering, interpretation, analysis and application will be included. Career opportunities and educational preparation will be examined. Learning activities are varied with classroom, laboratory and field experiences will be included. Students will gain knowledge, skill and understanding in a variety of animal behavior and handling techniques, biotechnology and animal genetics, small animal production/management, exotic/alternative livestock production and management, poultry production, aquaculture production and integrated resource management. Current animal agriculture issues will be researched and addressed. The scientific processes of observation, hypothesizing, data gathering, interpretation, analysis and application will be included. Career opportunities and educational preparation will be examined. Learning activities are varied with classroom, laboratory and field experiences will be included.

Floriculture A & B

| B | G |

Course Length: Year Long	Prerequisite: Introduction to Agriculture A & B	Grade Level: 10, 11, 12	Elective: Life Skills/Applied Arts or Fine Arts	Level 3	Fees/Dues: \$25.00
-----------------------------	--	----------------------------	---	---------	-----------------------

This is a year long course in which students will learn about the production, arrangement, and retailing of flowers. Classification and identification of common plants used in the floral industry will be taught. The class will include numerous labs where fresh, silk, and dried flowers are used to design corsages, wedding bouquets, table flower arrangements, and seasonal holiday decorations. The course will also highlight developing communication skills, business principles, and leadership skills in the floriculture industry. Participation in FFA student organization activities and Supervised Agricultural Experience (SAE) projects is an integral course component for leadership development, career exploration and reinforcement of academic concepts.

N = Foundation Knowledge & Skills **B** = Ag & Natural Resources **G** = STEM, Arts, Design & Industrial Technology
O = Skilled Trade & Technology Science **Gr** = Health Science & Public Safety **P** = Hospitality, Human Services & Education
R = Business & Public Administration

Structure Design & Fabrication

| B | O |

Course Length: Fall Semester	Prerequisite: Principles of Ag Power, Structure, & Technical System-A and Advanced Welding Technology-B	Grade Level: 11, 12	Elective: Life Skills/Applied Arts <u>or</u> Fine Arts	Level 3	Fees/Dues: \$25.00
---------------------------------	--	------------------------	--	---------	-----------------------

In this course students will gain knowledge and skills needed to enter the workforce or to prepare for a postsecondary degree in construction management, architecture, or engineering. Students will acquire knowledge and skills in safety, reading/creating construction drawings, tool ID and usage, building material ID and usage, building codes, and framing. ****Must take with Metal Fabrication second semester.**

Metal Fabrication

| B | O |

Course Length: Spring Semester	Prerequisite: Structure Design & Fabrication	Grade Level: 11, 12	Elective: Life Skills/Applied Arts <u>or</u> Fine Arts	Level 4	Fees/Dues: \$25.00
-----------------------------------	---	------------------------	--	---------	-----------------------

This course entails the application of basic metal welding skills to the construction of items through the fabrication process. Skills include project blueprint development, welding blueprint symbols interpretation, bill of materials, fabrication process determination, construction skills and quality control. ****Must take with Structure Design and Fabrication first semester**

Agriculture Engine Technology B

| B | O |

Course Length: Fall Semester	Prerequisite: Introduction to Agriculture A & B	Grade Level: 10, 11, 12	Elective: Life Skills/Applied Arts	Level 4	Fees/Dues: \$25.00
---------------------------------	--	----------------------------	---------------------------------------	---------	-----------------------

This course builds on the systems and information gained in Agriculture Engines Technology I. This course will use the fundamentals of small engines and move to the use of technical drawings and manuals for diagnosis, and service of the systems and components of all types of power engines such as outdoor power equipment, motorcycles, generators, and irrigation engines. Other course topics include multi-cylinder engines, hydraulics, and electric motors. This course is designed to provide hands-on and practical application for employment in the engine technology industry. Instruction includes the repair and service of cooling, air, fuel, lubricating, electrical, ignition, and mechanical systems and small engine overhauls. ****Must take with Plumbing and Electrical Installation second semester**

Plumbing and Electrical Installation

| B | O |

Course Length: Spring Semester	Prerequisite: Introduction to Agriculture A & B	Grade Level: 10, 11, 12	Elective: Life Skills/Applied Arts	Level 4	Fees/Dues: \$25.00
-----------------------------------	--	----------------------------	---------------------------------------	---------	-----------------------

In this course students will acquire knowledge and basic skills in electrical and plumbing technologies including how to identify and use power and hand tools; how to be safe on the jobsite and when using hand and power tools. Plumbing skills will include how to identify, fit, and use industry relevant plumbing pipe materials such as copper, PVC, poly, etc. Plumbing system design and troubleshooting will also be addressed. In addition, students will be introduced to gas, drainage, and water supply systems and continue their knowledge of workplace basics and green technologies. Skills in the electrical area include electrical theory, tool identification and use, electrical codes, installation of electrical equipment, and the reading of electrical drawings, schematics, and specifications. **** Must take with Agriculture Engine Technology B first semester**

N = Foundation Knowledge & Skills B = Ag & Natural Resources G = STEM, Arts, Design & Industrial Technology
O = Skilled Trade & Technology Science Gr = Health Science & Public Safety P = Hospitality, Human Services & Education
R = Business & Public Administration

Horticultural Sciences - A

| B | G |

Course Length: Fall Semester Prerequisite: Introduction to Agriculture A & B Grade Level: 10, 11, 12 Elective: Life Skills/Applied Arts or Science Level 2

This course is designed to introduce students to the horticulture industry. Major units of instruction include horticulture research, horticultural careers, plant anatomy, seed germination, plant propagation, growing media, pest management, hydroponics, identifying horticultural plants, soil science, growing greenhouse crops. Improving industry standard workplace skills will be a focus. Participation in FFA student organization activities and Supervised Agricultural Experience (SAE) projects is an integral course component for leadership development, career exploration and reinforcement of academic concepts. ****Honor Diploma students CANNOT take this course for a science credit. **Must take with Greenhouse Production second semester***

Greenhouse Production

| B | G |

Course Length: Spring Semester Prerequisite: Horticultural Sciences - A Grade Level: 10, 11, 12 Elective: Life Skills/Applied Arts or Science Level 2

This advanced course offers instruction in greenhouse production. Units of study include plant identification, greenhouse management, integrated pest management, propagation, growing media, growing greenhouse crops, horticulture mechanics. Agribusiness units will cover operating a horticultural business, pricing work, advertising, and sales. Participation in FFA student organization activities and Supervised Agricultural Experience (SAE) projects is an integral course component for leadership development, career exploration and reinforcement of academic concepts. ****Honor Diploma students CANNOT take this course for a science credit. **Must take with Horticultural Science A first semester***

Capstone in CTE

| B | G | P | O | R |

Course Length: Semester Prerequisite: Taken three years of Ag/CTE courses Grade Level: 12 Elective: Life Skills/Applied Arts Level 4

This course allows for advanced work in any Agriculture Program of Study. This advanced work can be individualized to the specific program of study to allow for specialized study for the student. It may include project based learning or preparation for the end of program industry certification. Specific content and course design will be determined by the instructor in collaboration with the individual student.

AIMS Community College Concurrent Enrollment

ASC 1100 Animal Sciences

| B | G |

Course Length: Fall Semester Prerequisite: Animal Production A & B Grade Level: 11, 12 Elective: Life Skills/Applied Arts or Science Level 4

In this course, students will study the basic fundamentals of livestock production pertaining to principles of breeding, genetics, nutrition, health, and physiology of beef, sheep, swine, dairy, and horses. Focuses on the Animal Science Industry in general and each species industry in regard to history, current situation, and future direction. *****Note: Eaton RE-2 School District will pay a portion of the course tuition. Please speak with an EHS counselor for further details. This course is for dual enrollment with AIMS Community College. Students will be responsible for cost of books, materials, and supplies for the course.***

AGE 2110 Agriculture Marketing

| B | O |

Course Length: Spring Semester Prerequisite: Principles of Ag Business A & B Grade Level: 11, 12 Elective: Life Skills/Applied Arts Level 4

In this course, students will study the agricultural marketing system and methods of marketing crops and livestock. Emphasizes hedging with futures options. *****Note: Eaton RE-2 School District will pay a portion of the course tuition. Please speak with an EHS counselor for further details. This course is for dual enrollment with AIMS Community College. Students will be responsible for cost of books, materials, and supplies for the course.***

N = Foundation Knowledge & Skills B = Ag & Natural Resources G = STEM, Arts, Design & Industrial Technology
O = Skilled Trade & Technology Science Gr = Health Science & Public Safety P = Hospitality, Human Services & Education
R = Business & Public Administration

AGE 1102 Ag Economics

| B | G |

Course Length:
Spring Semester

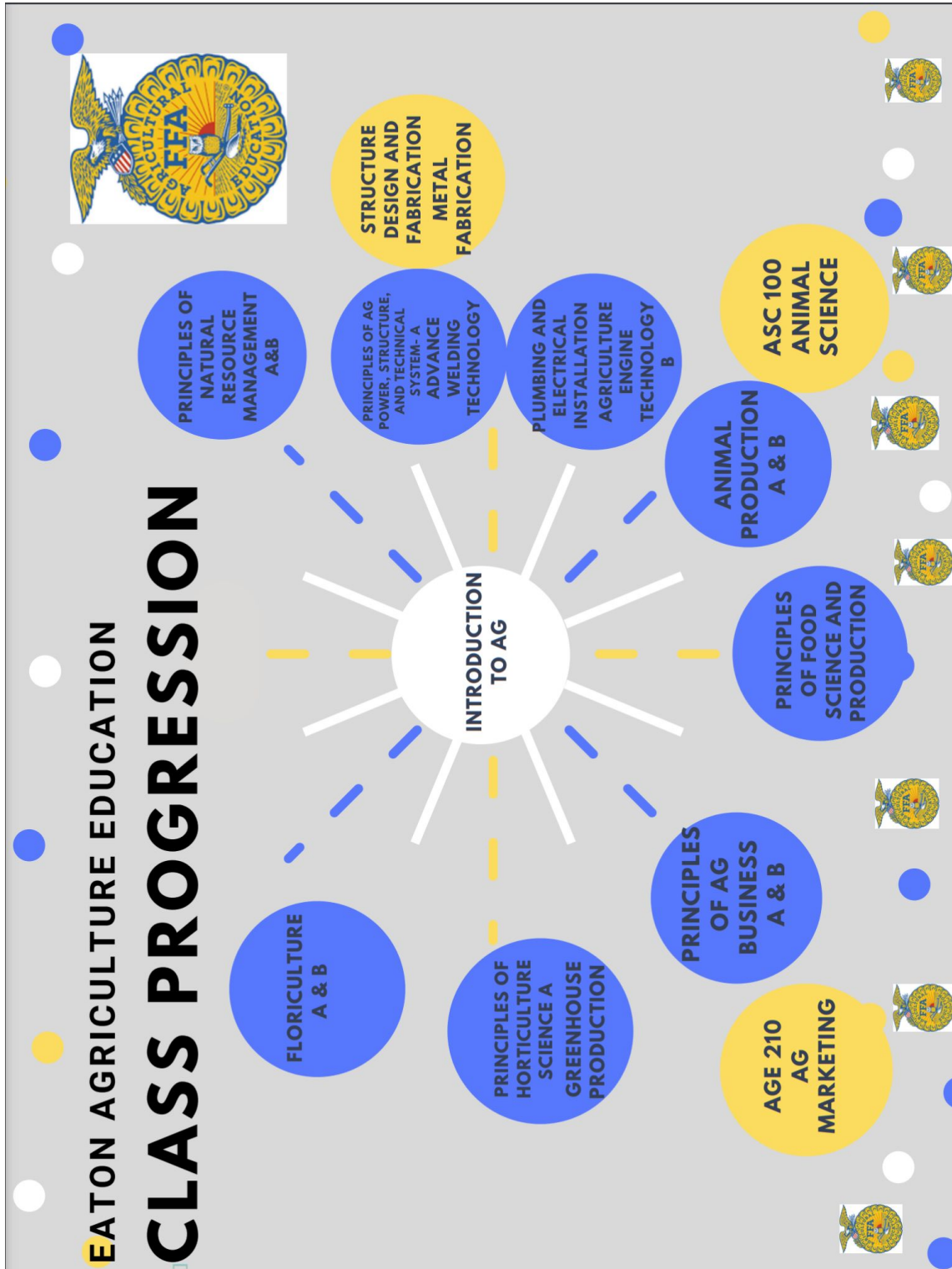
Prerequisite:
Principles of Ag Business A & B

Grade Level:
11, 12

Elective:
Life Skills/Applied Arts

Level 4

Focuses on economic principles and decision-making by consumers, firms, and government with emphasis on their application to the food, fiber, and natural resource sectors of the economy. This is a statewide Guaranteed Transfer course in the GT-SS1 category. ****Note: Eaton RE-2 School District will pay a portion of the course tuition. Please speak with an EHS counselor for further details. This course is for dual enrollment with AIMS Community College. Students will be responsible for cost of books, materials, and supplies for the course.**



Section II: Business & Technology

(Please see the Business Pathway flowchart for sequence of courses on page 24)

Personal Finance

| G | R |

Course Length: Semester	Prerequisite: None	Grade Level: 9, 10	Elective: Life Skills/Applied Arts	Level None
----------------------------	-----------------------	-----------------------	---------------------------------------	------------

This course surveys the basic personal finance needs of most individuals and introduces the personal finance tools useful in planning and instituting a successful personal financial philosophy. The course emphasizes the basics of budgeting, buying, saving, borrowing, career planning, investing, retirement planning, estate planning, insurance, and income taxes.

Introduction to Business

| G | R |

Course Length: Semester	Prerequisite: None	Grade Level: 9, 10	Elective: Life Skills/Applied Arts	Level 1
----------------------------	-----------------------	-----------------------	---------------------------------------	---------

This course introduces the application of fundamental business principles to local, national, and international forums. This course examines the relationship of economic systems, governance, regulations, and law upon business operations. It surveys the concepts of career development, business ownership, finance and accounting, economics, marketing, management, operations, human resources, regulations, and business ethics.

Graphic Design

| P | R |

Course Length: Semester	Prerequisite: Fundamentals of Accounting <u>or</u> Principles of Marketing	Grade Level: 10, 11, 12	Elective: Life Skills/Applied Arts	Level 3
----------------------------	--	----------------------------	---------------------------------------	---------

This course focuses upon the study of design layout and conceptual elements concerning graphic design projects such as posters, advertisements, logos, and brochures.

Ethical Leadership

| Gr | R | N | P |

Course Length: Semester	Prerequisite: None	Grade Level: 9, 10, 11, 12	Elective: Life Skills/Applied Arts	Level 1
----------------------------	-----------------------	-------------------------------	---------------------------------------	---------

Ethical Leadership is a principles-based ethics course introducing students to key leadership and ethical knowledge and skills, including integrity, trust, accountability, transparency, fairness, respect, rule of law, and viability. Throughout the course, students apply ethical principles to contemporary, real-world situations that teens and young adults often encounter in school, at home, with friends, and in entry-level job positions. They examine the concept of ethical leadership and strengthen their leadership and ethical decision-making skills through the planning, implementation, and evaluation of a class service-learning project.

Legal Environment of Business

| Gr | P | R |

Course Length: Semester	Prerequisite: Fundamentals of Accounting <u>or</u> Principles of Marketing	Grade Level: 10, 11, 12	Elective: Life Skills/Applied Arts	Level 3
----------------------------	---	----------------------------	---------------------------------------	---------

This course emphasizes public law, regulation of business, ethical considerations, and various relationships existing within society, government, and business. Specific attention is given to economic regulation, social regulation, labor-management issues, environmental issues, and contract fundamentals. This course analyzes the role of law in social, political, and economic change business environments.

N = Foundation Knowledge & Skills **B** = Ag & Natural Resources **G** = STEM, Arts, Design & Industrial Technology
O = Skilled Trade & Technology Science **Gr** = Health Science & Public Safety **P** = Hospitality, Human Services & Education
R = Business & Public Administration

Event Marketing/Communications

| B | G | O | P | R |

Course Length: Semester Prerequisite: Fundamentals of Accounting or Principles of Marketing Grade Level: 10, 11, 12 Elective: Life Skills/Applied Arts Level 3

This course defines the importance and role of marketing, media and public relations in the event planning industry. Identify marketing and communication tools such as social media, promotional events, networking and blogs. Design a marketing plan to include target market research, communication tools, objectives, strategies, and implementation.

School-based Enterprise - Operations Management

| B | G | O | Gr | P | R |

Course Length: Year Long Prerequisite: Fundamentals of Accounting or Principles of Marketing Grade Level: 11, 12 Elective: Life Skills/Applied Arts Level 4

This course focuses on all facets of starting and managing a school-based enterprise. Focus will include writing a business plan, holding interviews, and establishing operating policies and procedures. Building a solid framework of work-based learning for the student. (***Honors weighted GPA 4.5*)

Capstone in CTE

| R |

Course Length: Semester Prerequisite: Fundamentals of Accounting or Principles of Marketing and one additional Business course Grade Level: 12 Elective: Life Skills/Applied Arts Level 4

This course allows for advanced work in any Program of Study. This advanced work can be individualized to the specific program of study to allow for specialized study for the student. It may include project based learning or preparation for the end of program industry certification. Specific content and course design will be determined by the instructor in collaboration with the individual student.

Work-Based Learning - CTE

| N | B | G | Gr | P | R |

Course Length: Semester or Year Long Prerequisite: Paid employment, Work-based Learning Instructor Approval, and Application Grade Level: 11, 12 Elective: Life Skills/Applied Arts Level 4

This course is an opportunity for students to receive credit for time spent at a paid job (during semester enrolled). Students will be supervised by the instructor who will work with the employer/supervisor to evaluate student progress. Students may NOT work for parents or relatives without working directly through their business as a paid employee.

Work-Based Learning hours requirements are as follows:

.5 credit = minimum of 100 hours/semester

1 credit = minimum of 200 hours/semester

*****Hours must be verified by the employer, and students can earn a maximum of 1.0 credit per semester***

AIMS Community College Concurrent Enrollment

ACC 1001 Fundamentals of Accounting

| O | P | R |

Course Length:
Year Long

Prerequisite:
Introduction to Business

Grade Level:
10, 11, 12

Elective:
Life Skills/Applied Arts

Level 2

This course introduces accounting fundamentals with emphasis on the procedures and practices used in business organizations. Major topics include the accounting cycle for service and merchandising companies, including end-of-period reporting.

****Note: Eaton RE-2 School District will pay a portion of the course tuition. Please see an EHS Counselor for further details. 3 college credits**

MAN 2000 Human Resource Management

Course Length:
Semester

Prerequisite:
Principles of Marketing

Grade Level:
9, 10, 11, 12

Elective:
Life Skills/Applied Arts

Level 3

****Note: Eaton RE-2 School District will pay a portion of the course tuition. Please see an EHS Counselor for further details. 3 college credits**

MAR 2016 Principles of Marketing

| B | G | O | Gr | P | R |

Course Length:
Semester

Prerequisite:
Introduction to Business

Grade Level:
9, 10, 11, 12

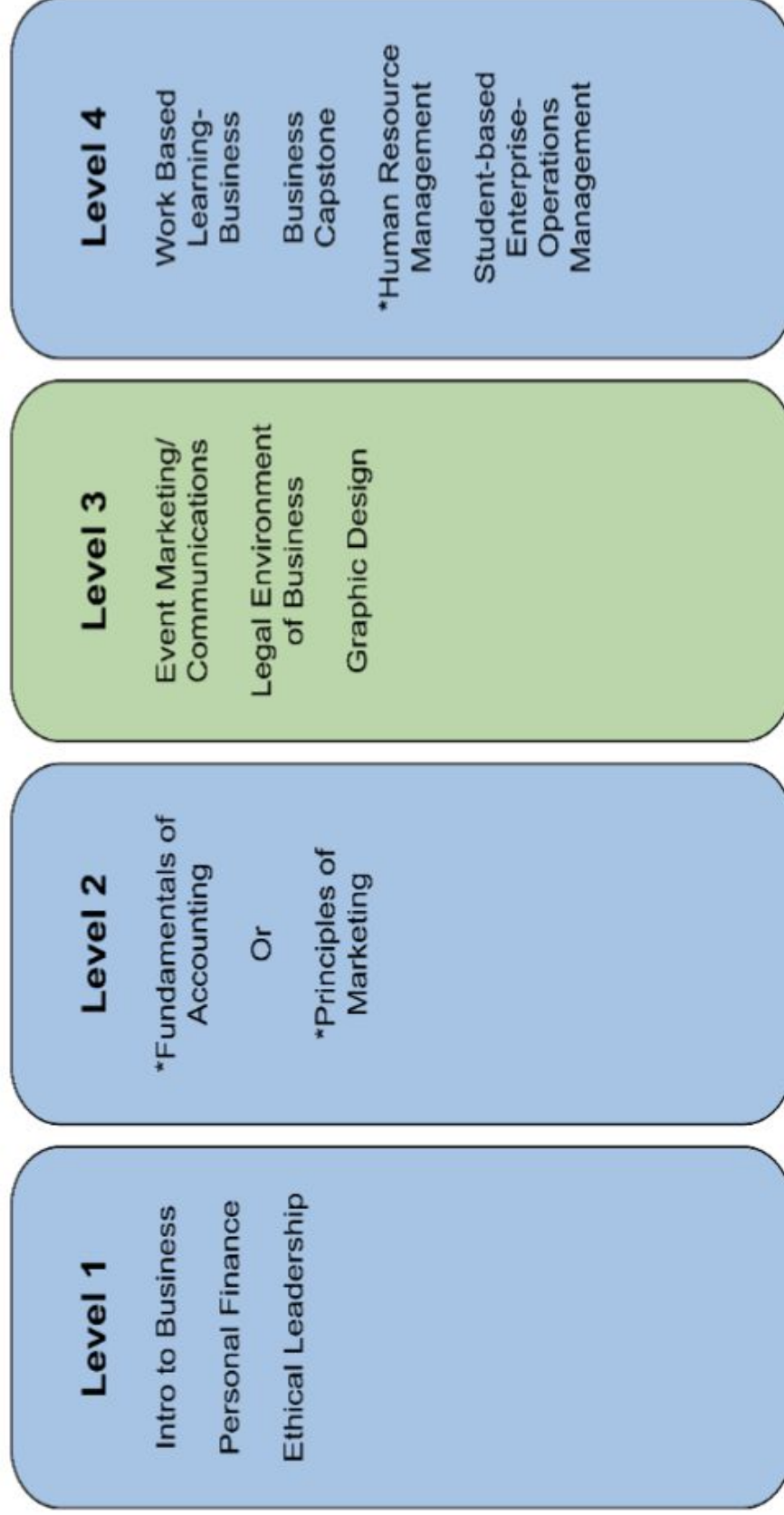
Elective:
Life Skills/Applied Arts

Level 2

This course presents the analysis of theoretical marketing processes and the strategies of product development, pricing, promotion and distribution, and their applications to businesses and the individual consumer.

****Note: Eaton RE-2 School District will pay a portion of the course tuition. Please see an EHS Counselor for further details. 3 college credits**

CTE Business Program Progression



*Denotes the class is Dual Enrollment through Aims Community College

Level 1: Introduction to Business is the best option for students interested in the Business Pathway. Personal Finance and Ethical Leadership are great classes for students interested in developing life skills.

Level 2: One of the two options must be taken before any student takes a Level 3 or Level 4 class.

Level 3: Elective classes used to support skills developed in Level 1 and Level 2 classes.

Level 4: Students who complete a Level 2 class can progress to Level 4 options without taking any Level 3 electives. Level 4 focuses on the real-world application of concepts rather than a teacher-led class.

Section III: Construction Technology (P-Tech Program)

Principles of Construction

| O |

Course Length:
Semester

Prerequisite:
None

Grade Level:
9, 10, 11, 12

Elective:
Life Skills/Applied Arts

Level 1

Fees/Dues:
\$35.00

Principles of Construction is a foundational course in the Architecture & Construction cluster covering essential knowledge, skills, and concepts required for careers in construction. Upon completion of this course, proficient students will be able to describe various construction fields and outline the steps necessary to advance in specific construction careers. Students will be able to employ tools safely and interpret construction drawings to complete projects demonstrating proper measurement and application of mathematical concepts. Standards in this course also include an overview of the construction industry and an introduction to building systems and materials

Work-Based Learning/Internship

| O |

Course Length:
Semester or Year-Long

Prerequisite:
Principles of Construction

Grade Level:
11, 12

Elective:
Life Skills/Applied Arts or
Fine Arts

Level 4

This course is designed to prepare students to enter the workforce through on-the-job training in the form of a work-based learning experience and may be combined with class instruction. Students will build on prior knowledge and skills in the program of study aligned to their career and academic plan to further develop and apply employability and technical skills that prepare them for success in future careers and postsecondary education. Students will have the opportunity to develop skills in supervised practical experience on the job or in a classroom-based job environment. A personalized learning plan is a requirement of this course.

***Significant industry engagement is required for this course and includes, but is not limited to, setting professional expectations for quality of work, mentoring students through a project and providing feedback, and evaluating employability skill development. Students should have a minimum contact of 30 hours with employers or in the job setting. A dedicated workplace mentor will supervise each student in workplace-based experiences such as internships, co-ops, and apprenticeships.*

AIMS Community College Dual Enrollment

Construction Technology IA & IB

| O |

Course Length: Year Long	Prerequisite: Principles of Construction	Grade Level: 10, 11, 12	Elective: Life Skills/Applied Arts	Level 2	Fees/Dues: \$25.00
-----------------------------	---	----------------------------	---------------------------------------	---------	-----------------------

This is the foundation course to basic residential construction. Students will demonstrate competencies that are nationally recognized by the construction industry. Students will learn and practice structural framing of floors, walls, ceilings, and roofs. This course also includes the use of basic construction tools and machinery, applied math, and an introduction to blueprint reading. This course teaches students industry safety including the use of all machines and tools. 6 total credits, 2 Industry Certificates and OSHA 10-hour card. ***This class may be chosen to be used for high school credit only.***

*****Note: Eaton RE-2 School District will pay a portion of the course tuition. Please see an EHS Counselor for further details. 3 college credits***

*****Fall Semester -- CAR 1000 - Introduction to Carpentry, CAR 1001 - Basic Safety & CAR 1002 - Hand and Power Tools for 3 total college credits***

*****Spring Semester -- CAR 1005 - Job Site Layout/Blueprint Reading & CAR 1070 - Clinical: Construction Lab for 3 total college credits***

AEC 1200 - Residential & Commercial Blueprint Reading

| O |

Course Length: Semester Long	Prerequisite: Construction Technology	Grade Level: 11 and 12	Elective: Life Skills/Applied Arts	Level 3	Fees/Dues \$25.00
---------------------------------	--	---------------------------	---------------------------------------	---------	----------------------

Students in this class will learn about various facets of construction in both a classroom and hands-on setting. This program of study is intended to prepare students for careers in construction by developing an understanding of the different phases of a construction project from start to finish. Upon completion of this course, proficient students will be able to demonstrate knowledge and skill in the earlier phases of building construction, including site layout, foundation systems, framing systems, and electrical systems.

*****Note: Eaton RE-2 School District will pay a portion of the course tuition. Please see an EHS Counselor for further details. 3 college credits***

AEC 1520 - Construction Material/Systems

| O |

Course Length: Semester Long	Prerequisite: Construction Technology & AEC 1200	Grade Level: 11 and 12	Elective: Life Skills/Applied Arts	Level 3	Fees/Dues \$25.00
---------------------------------	---	---------------------------	---------------------------------------	---------	----------------------

Introduces the student to the scope of the construction industry. Examines the qualities, uses, and characteristics of wood, ordering, pricing, fasteners, adhesives, manufactured wood products, steel, vinyl, and aluminum, and their applications in the construction process. Explores Built-Green products and their characteristics. This course explores inspection, estimation, and appraisal professions.

*****Note: Eaton RE-2 School District will pay a portion of the course tuition. Please see an EHS Counselor for further details. 3 college credits***

N = Foundation Knowledge & Skills **B** = Ag & Natural Resources **G** = STEM, Arts, Design & Industrial Technology
O = Skilled Trade & Technology Science **Gr** = Health Science & Public Safety **P** = Hospitality, Human Services & Education
R = Business & Public Administration

AEC 2550 - Building Electrical/Mechanical Systems

| O |

Course Length: Semester Long	Prerequisite: Construction Technology	Grade Level: 10, 11, 12	Elective: Life Skills/Applied Arts	Level 2	Fees/Dues: \$25.00
---------------------------------	--	----------------------------	---------------------------------------	---------	-----------------------

Mechanical, Electrical, and Plumbing Systems prepares students for electrical, plumbing, and HVAC careers by introducing students to the physical principles of these systems and the fundamental skills needed to work with them. Upon completion of this course, proficient students will be able to follow safety procedures and use tools to perform basic operations with electrical circuits, as well as demonstrate an understanding of fundamental concepts of electricity theory (i.e. Ohm's Law). Students will be able to apply proper tools and procedures to perform basic operations with plastic piping, including measuring, cutting, and joining pipe. Furthermore, students will be able to apply mathematics concepts to solve HVAC, electrical, and plumbing problems. This course is intended to provide an introduction and lay a solid foundation for those students entering the construction or craft skilled areas. The course provides a strong knowledge of construction safety, construction mathematics, and common hand and power tools. This course also provides communication and occupation skills to assist the student in obtaining and maintaining employment.

****Note: Eaton RE-2 School District will pay a portion of the course tuition. Please see an EHS Counselor for further details. 3 college credits**

AEC 2660 - Construction Safety & Loss Prevention

| O |

Course Length: Semester Long	Prerequisite: All other Level 3 courses	Grade Level: 11, 12	Elective: Life Skills/Applied Arts	Level 3	Fees/Dues \$25.00
---------------------------------	---	---------------------------	---------------------------------------	---------	----------------------

This course provides an introduction to construction management principles used in the industry, including the organization of project teams, the role of the project manager, how project management is used within the industry, and basic project management concepts and techniques.

****Note: Eaton RE-2 School District will pay a portion of the course tuition. Please see an EHS Counselor for further details. 2 college credits**

AEC 2700 - Advanced Carpentry/International Building Codes

| O |

Course Length: Semester Long	Prerequisite: All level 3 courses	Grade Level: 11, 12	Elective: Life Skills/Applied Arts	Level 4	Fees/Dues \$25.00
---------------------------------	--------------------------------------	------------------------	---------------------------------------	---------	----------------------

Advanced Woodworking and Carpentry is designed to introduce advanced skills for residential carpentry. Topics included in the course are cabinetry construction and installations, advanced trim work, flooring, custom cabinetry, and codes and regulations.

****Note: Eaton RE-2 School District will pay a portion of the course tuition. Please see an EHS Counselor for further details. 3 college credits**

Section IV: English

Four full years of English are required. Survey of Language Arts, World Literature, and American Literature are required plus two (2) English electives; *at least one of which must be taken senior year.*

EDGENUITY COURSE POLICY: *Edgenuity courses will be taken for grade reclamation only, meaning if you fail an English course, you can make it up either during summer school or with Edgenuity. We are unable to offer Edgenuity as substitutes for any of the four required English credits--either core or elective classes. Students who take Edgenuity for one of their four required English credits will not be eligible for an Honors Diploma.*

Survey of Language Arts

| N |

Course Length: Year Long	Prerequisite: None	Grade Level: 9	Elective: REQUIRED
-----------------------------	-----------------------	-------------------	-----------------------

This required course is designed to give students the essential grammar, reading, speaking, and composition skills that will serve as a foundation for all later English courses. This course will introduce essay writing including narrative essays, literary analysis, and research. Emphasis will be on the writing process (planning, drafting, re-writing, editing, and producing a final product) as well as identifying audience and purpose. It will also provide students with instruction in note-taking, listening skills, study skills, thinking skills, and vocabulary development. This course will also be an introductory literature course which will introduce novels, poetry, and short stories as content reading. In addition, students will prepare speeches based on non-fiction reading.

World Literature

| N |

Course Length: Year Long	Prerequisite: Survey of Language Arts	Grade Level: 10	Elective: REQUIRED
-----------------------------	--	--------------------	-----------------------

This required course is designed to give students fundamental skills in reading literature, in recognizing and appreciating cultural differences as they are used in literature from around the world, and in understanding and using literary terminology. Works selected will consist of myths, short stories, plays, poems, and novels. Writing skills will include narrative essays, literary analysis, research, poetry, and drama. Students will also continue learning and developing essential grammar skills. World Literature is designed to be taken concurrently with Sophomore World History, as connections between the two courses help develop students' worldview. Through this course, students will begin to discover the universal themes in literature and appreciate literature as a record of human experience.

American Literature

| N |

Course Length: Year Long	Prerequisite: World Literature	Grade Level: 11	Elective: REQUIRED
-----------------------------	-----------------------------------	--------------------	-----------------------

This required course will expand the fundamental skills in reading and writing about literature that students acquired in World Lit. Students will be exposed to a variety of themes and voices that define America. Works will consist of essays, autobiographies, poems, short stories, and novels. Students will write narrative essays, literary analysis, research, and poetry as part of their exploration of this literature. They will perform independent research projects which involves documenting oral history, historical research and presentation. They will also continue to use critical thinking to aid their own writing and understanding. American Literature is designed to be taken concurrently with American History, as connections between the two courses help develop students' worldview. Through this course, students will begin to discover the universal themes in literature and appreciate literature as a record of human experience.

Public Speaking

| N | B | G | O | Gr | P | R |

Course Length: Semester	Prerequisite: None: May only be taken one Semester	Grade Level: 11, 12 ONLY	Elective: English
----------------------------	---	-----------------------------	----------------------

This English elective for 11th and 12th graders is designed to introduce students to the basics of public speaking and build confidence to acquire public speaking skills. Styles of speeches emphasized will be informative, persuasive, and ceremonial speeches. These speeches will apply to "real-life" situations focusing on analytical, organizational and presentation skills as well as vocal delivery. Students will develop an understanding of communication concepts, especially focusing on non-verbal communication as it applies in all interpersonal interactions.

N = Foundation Knowledge & Skills **B** = Ag & Natural Resources **G** = STEM, Arts, Design & Industrial Technology
O = Skilled Trade & Technology Science **Gr** = Health Science & Public Safety **P** = Hospitality, Human Services & Education
R = Business & Public Administration

Creative Writing

| G | R |

Course Length: Semester Prerequisite: None: May only be taken one semester Grade Level: 11, 12 **ONLY** Elective: English Fees/Dues: Purchase of an instructor specified nonfiction book

This English elective for 11-12th graders offers students the opportunity to explore their own interests in both fiction and nonfiction writing. Elements of story, including character, plot, setting, theme, and conflict, are the foundational pieces of narrative writing that are explored in different genres throughout the semester. The class is organized around genres of writing such as memoir, satire, vignette, poetry, and interview. Students will develop an understanding of how elements of story, literary elements, and genre all intersect in creative writing while also considering the purpose and audience for writing. In addition to in-class writings, activities, and genre writings, a strong emphasis will be placed on peer review and the process of drafting for the purpose of eventual publication.

Sports in Literature

| N |

Course Length: Semester Prerequisite: None Grade Level: 12 **ONLY** OR Prior teacher approval Elective: English

This course is designed to engage students, who enjoy reading, in literature centered around sports. The focus of the class will be a shared literary experience to enhance comprehension and appreciation. Students will focus on contemporary sports literature. Students will read works such as athlete biographies, sports-related fiction, or books written by coaches. Students will be expected to read four novels, discuss using critical thinking skills, and respond in writing with review exercises for the novels read. Students will be required to obtain a copy of the novels read - purchase, library, borrow, etc.

Contemporary Reading

| N |

Course Length: Semester Prerequisite: None Grade Level: 12 **ONLY** OR Prior teacher approval Elective: English

This course is designed to engage students, who enjoy reading, in the critical thinking and discussion that accompanies great literature. The focus of the class will be a shared literary experience to enhance comprehension and appreciation. Students will focus on contemporary literature as social commentary. Students will analyze literary works as a reflection of society, themselves and their world. Students will be expected to read four novels, discuss using critical thinking skills, and respond in writing with review exercises for the novels read. Students will be required to obtain a copy of the novels read - purchase, library, borrow, etc.

Journalistic Writing I

| G | Gr | P | R |

Course Length: Semester Prerequisite: None: May only be taken one semester Grade Level: 9, 10, 11, 12 Elective: English

Journalistic Writing I is a prerequisite course for the student newspaper. Students will develop the skills that are essential for reliable, accurate and independent news reporting. This introductory course is designed to help students enhance their writing skills with a focus on a direct, technical writing style. A strong emphasis will be placed on First Amendment, journalistic ethics and student press law. Units include Ethics and Responsible Journalism, News Writing, Sports Writing, Editorial Writing, Review Writing, Layout and Design, and Photojournalism. Grades will be based on the quality of work and the ability to meet deadlines.

N = Foundation Knowledge & Skills **B** = Ag & Natural Resources **G** = STEM, Arts, Design & Industrial Technology
O = Skilled Trade & Technology Science **Gr** = Health Science & Public Safety **P** = Hospitality, Human Services & Education
R = Business & Public Administration

Journalistic Writing II

| G | Gr | P | R |

Course Length:
Semester

Prerequisite:
Journalistic Writing I or instructor approved

Grade Level:
9, 10, 11, 12

Elective:
English

Journalistic Writing II is the student-led school newspaper, *The Red Ink*. After learning the forms of journalistic writing, news gathering, and interviewing, students will help senior editors plan, write, edit, and design *The Red Ink*. Students will also learn basics in photography, layout and design, including Adobe Photoshop and InDesign. This class can be taken multiple semesters; however, for the purpose of NCAA requirements, only one semester will count toward core course requirements.

Aims Community College Dual Enrollment

ENG 1021 English Composition I

| N | B | G | O | Gr | P | R |

Course Length:
Semester

Prerequisite:
B or higher in American Literature OR SAT 470+ on Evidence-based Reading and Writing OR ACT 30+ on English OR Teacher Approval

Grade Level:
12 **ONLY** OR Prior teacher approval

Elective:
English

This course emphasizes the planning, writing, and revising of compositions, including the development of critical and logical thinking skills. This course includes a wide variety of compositions that stress analytical, evaluative, and persuasive/argumentative writing. *This course is for dual enrollment with the Aims Community College. Students will be responsible for the cost of books, materials and fees for the course. This is a weighted course graded on a 4.5 scale.*

ENG 1022 English Composition II

| N | B | G | O | Gr | P | R |

Course Length:
Semester

Prerequisite:
ENG 121

Grade Level:
12

Elective:
English

This course expands and refines the objectives of English Composition I. Emphasizes critical/logical thinking and reading, problem definition, research strategies, and writing analytical, evaluative, and/or argumentative compositions. *This course is for dual enrollment with the Aims Community College. Students will be responsible for the cost of books, materials, and fees for the course. This is a weighted course graded on a 4.5 scale.*

ENG 1031 Technical Writing

| N | B | G | O | Gr | P | R |

Course Length:
Semester

Prerequisite:
Passing grade in World & American Literature

Grade Level:
11 & 12 with Instructor Approval

Elective:
English

This course develops skills one can apply to a variety of technical documents. Focuses on principles for organizing, writing, and revising clear, readable documents for industry, business, and government. *This course is for dual enrollment with the Aims Community College. Students will be responsible for the cost of books, materials, and fees for the course. This is a weighted course graded on a 4.5 scale.*

LIT 1015 Introduction to Literature

| N | B | G | O | Gr | P | R |

Course Length:
Semester

Prerequisite:
Passing grade in World & American Literature

Grade Level:
11 & 12 with Instructor Approval

Elective:
English

This course introduces fiction, poetry, and drama. This course emphasizes active and responsive reading. *This course is for dual enrollment with the Aims Community College. Students will be responsible for the cost of books, materials, and fees for the course. This is a weighted course graded on a 4.5 scale.*

N = Foundation Knowledge & Skills **B** = Ag & Natural Resources **G** = STEM, Arts, Design & Industrial Technology
O = Skilled Trade & Technology Science **Gr** = Health Science & Public Safety **P** = Hospitality, Human Services & Education
R = Business & Public Administration

EHS ENGLISH COURSE OPTIONS

9TH GRADE REQUIRED*:

Survey of Lang. Arts
or
Survey of Lang. Arts+

10TH GRADE REQUIRED*:

World Literature
or
World Literature+

11TH GRADE REQUIRED*:

American Literature
or
American Literature+

12TH GRADE ONLY ELECTIVES:

Contemporary Reading (12)

Sports in Literature (12)

ENG 1021 College Composition
(12) concurrent enrollment w/
AIMS

ENG 1022 College Research
paper (12) concurrent
enrollment w/ AIMS

ENG 1031 Technical Writing
(12) concurrent enrollment w/
AIMS

MULTI-LEVEL ELECTIVES

Journalistic Writing I (9-12)

Journalistic Writing II (10-12
w/ instructor approval)

Public Speaking (11-12)

Creative Writing (11-12)

Lit 1015 Intro to Literature
(11-12) concurrent enrollment
w/ AIMS

Section V: Family & Consumer Sciences

Child and Adolescent Development

| P | Gr |

Course Length: Semester	Prerequisite: None	Grade Level: 10, 11, 12	Elective: Life Skills/Applied Arts	Level 1
----------------------------	-----------------------	----------------------------	---------------------------------------	---------

In this course, students will acquire knowledge and understanding of child and adolescent development necessary for strengthening the well-being of children and families. Content focuses on perspectives of human development, research and theories, understanding and nurturing development, and challenges to development.

Culinary Nutrition

| P |

Course Length: Semester	Prerequisite: None	Grade Level: 9, 10, 11, 12	Elective: Life Skills/Applied Arts	Level 1	Fees/Dues: \$25.00
----------------------------	-----------------------	-------------------------------	---------------------------------------	---------	-----------------------

This course strives to develop lifelong, healthy individuals with an understanding of healthy and nutritious preparation techniques utilizing various resources and skills. Emphasis is placed on implementing healthy nutritional choices, preparing nutrient-dense seasonal foods, sports nutrition, exploring careers related to culinary nutrition, and practicing wise consumer decisions.

Catering I

| P | R |

Course Length: Semester	Prerequisite: Culinary Nutrition	Grade Level: 9, 10, 11, 12	Elective: Life Skills/Applied Arts	Level 2	Fees/Dues: \$25.00
----------------------------	-------------------------------------	-------------------------------	---------------------------------------	---------	-----------------------

This course is designed for students with career interests in the food industry as well as owning their own catering business. This course is designed to be taken with Catering two. The purpose of this course is to develop skills in quantity, food preparation, safety and sanitation, planning, customer service, business plans and entrepreneurship. FCCLA is also an integral part of this course.

Catering II

| P | R |

Course Length: Semester	Prerequisite: Catering I	Grade Level: 10, 11, 12	Elective: Life Skills/Applied Arts	Level 2	Fees/Dues: \$40.00
----------------------------	-----------------------------	----------------------------	---------------------------------------	---------	-----------------------

This course is designed for students with career interests in the food industry as well as owning their own catering business. The purpose of this course is to develop skills in quantity, food preparation, safety and sanitation, planning, customer service, business plans and entrepreneurship. Students in this course will have the opportunity to receive their ServSafe Food Handler Certification following completion of course content and ServSafe exam.

**ServSafe Handler Exam costs \$15 and is included in the course fees*

Design Seminar

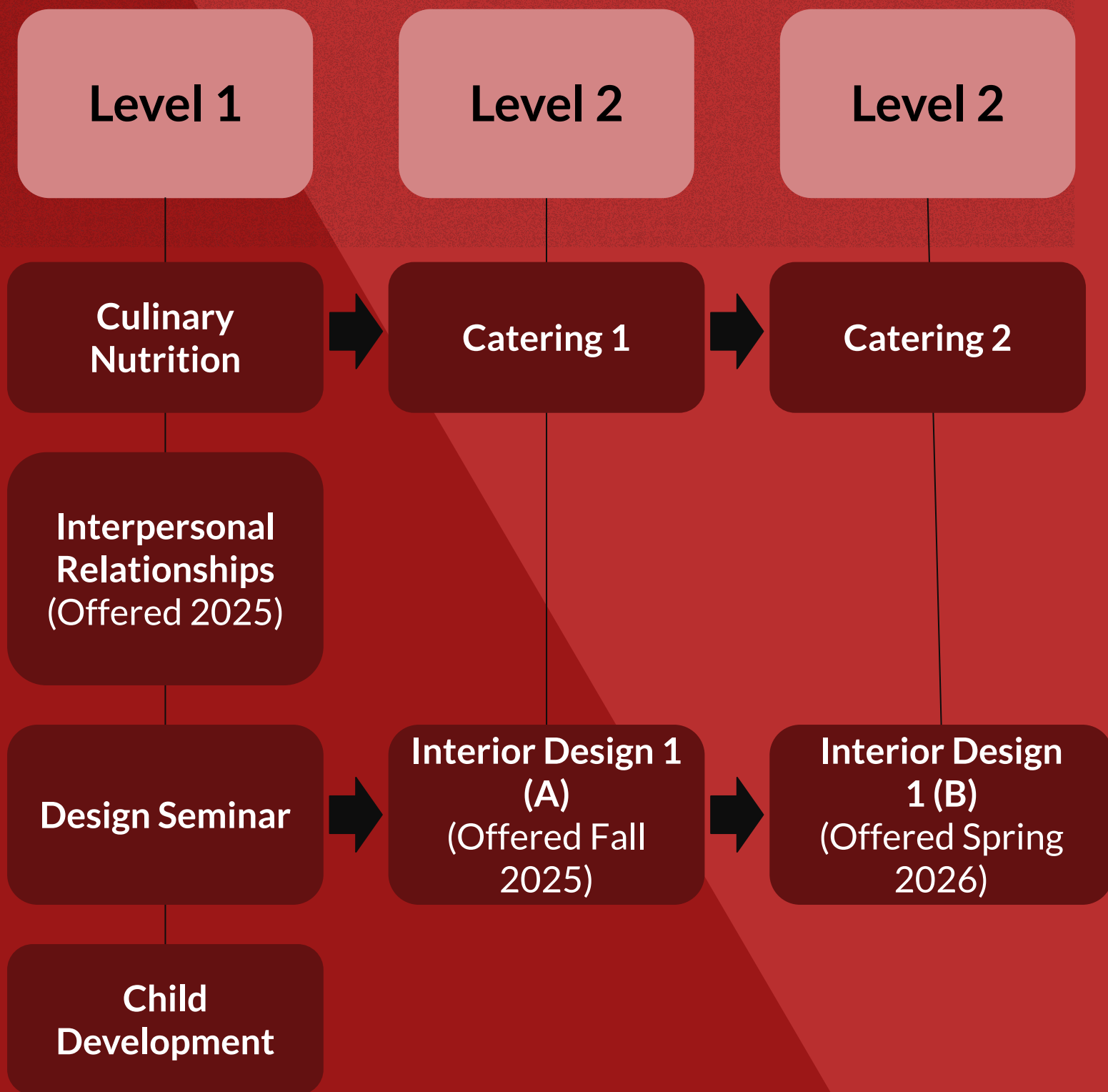
P | R |

Course Length: Semester	Prerequisite: None	Grade Level: 9, 10, 11, 12	Elective: Life Skills/Applied Arts	Level 1	Fees/Dues: \$25.00
----------------------------	-----------------------	-------------------------------	---------------------------------------	---------	-----------------------

This course focuses on introductory elements and principles of design as seen in Interior Design, Fashion Design, Publishing and a variety of other fields. In addition it will introduce students to the many careers that require design and allow them to analyze their own career pathways to determine where design might fit. This course is recommended as an introduction to the interior design and fashion design pathway.

FAMILY AND CONSUMER SCIENCES

EATON HIGH SCHOOL



Section VI: Fine Arts

Introduction to Art

| G |

Course Length: Semester	Prerequisite: None	Grade Level: 9, 10, 11, 12	Elective: Fine Arts	Fees/Dues: \$15.00
----------------------------	-----------------------	-------------------------------	------------------------	-----------------------

The course will cover the basic elements and principles of art in addition to color theory in relation to the basic needs that each person needs in order to learn how to motivate themselves. This class is designed to uncover the emotional well-being of the whole child through art exploration. Basic skills of communication and patience through the art making process will be the main focus of this class. We will be working on drawing, painting, printmaking, and some mixed media artworks over the semester. Some written work will be required.

Studio Art I

| G |

Course Length: Semester	Prerequisite: Passing Grade in Introduction to Art	Grade Level: 9, 10, 11, 12	Elective: Fine Arts	Fees/Dues: \$15.00
----------------------------	---	-------------------------------	------------------------	-----------------------

This course is designed to build upon the Intro course, scaffolding on the knowledge of self-awareness and emotional well-being while expanding our perspectives. The ultimate goal of this course is to understand how art can be integrated into our everyday lives while increasing our technical skills and overall appreciation for the arts. This class will work on drawing, painting, printmaking, and mixed media artworks over the semester. Some written work will be required.

Studio Art II

| G |

Course Length: Semester	Prerequisite: Passing Grade in Studio Art I	Grade Level: 10, 11, 12	Elective: Fine Arts	Fees/Dues: \$15.00
----------------------------	--	----------------------------	------------------------	-----------------------

This course is designed to build upon the previous two art courses (Introduction to Art and Studio 1), growing our perspectives, overlapping art into other disciplines, and building on our technical skills to improve realistic drawing skills. Students will explore the different styles of art through history and ultimately research and create a work of art inspired by an art movement or artist of that time. Some written work will be required.

Ceramics I

| G |

Course Length: Semester	Prerequisite: Passing Grade in Introduction to Art	Grade Level: 9, 10, 11, 12	Elective: Fine Arts	Fees/Dues: \$20.00
----------------------------	---	-------------------------------	------------------------	-----------------------

This course is designed to build upon Introduction to Art skills of understanding the Elements and Principles of Art in order to build 3-Dimensional Ceramic works. We will be covering some basic ceramic techniques and practice transferring 2-Dimensional ideas onto a 3-Dimensional artwork. This class will work with clay but may include other miscellaneous materials to add to our work.

Ceramics II

| G |

Course Length: Semester	Prerequisite: Passing Grade in Ceramics I	Grade Level: 10, 11, 12	Elective: Fine Arts	Fees/Dues: \$20.00
----------------------------	--	----------------------------	------------------------	-----------------------

This course is designed to build upon Intro to Art and Ceramics 1, practicing transferring 2-D ideas onto 3-Dimensional surfaces by exploring more advanced ceramic techniques. This course will also dive deeper into arts integration of other disciplines and explore different ways the arts can overlap into our lives. We will be working with clay while incorporating miscellaneous materials to make functional artworks.

N = Foundation Knowledge & Skills **B** = Ag & Natural Resources **G** = STEM, Arts, Design & Industrial Technology
O = Skilled Trade & Technology Science **Gr** = Health Science & Public Safety **P** = Hospitality, Human Services & Education
R = Business & Public Administration

Advanced Art

| G |

Course Length:
Semester

Prerequisite:
Intro to Art & Studio Art II OR Ceramics II

Grade Level:
11, 12

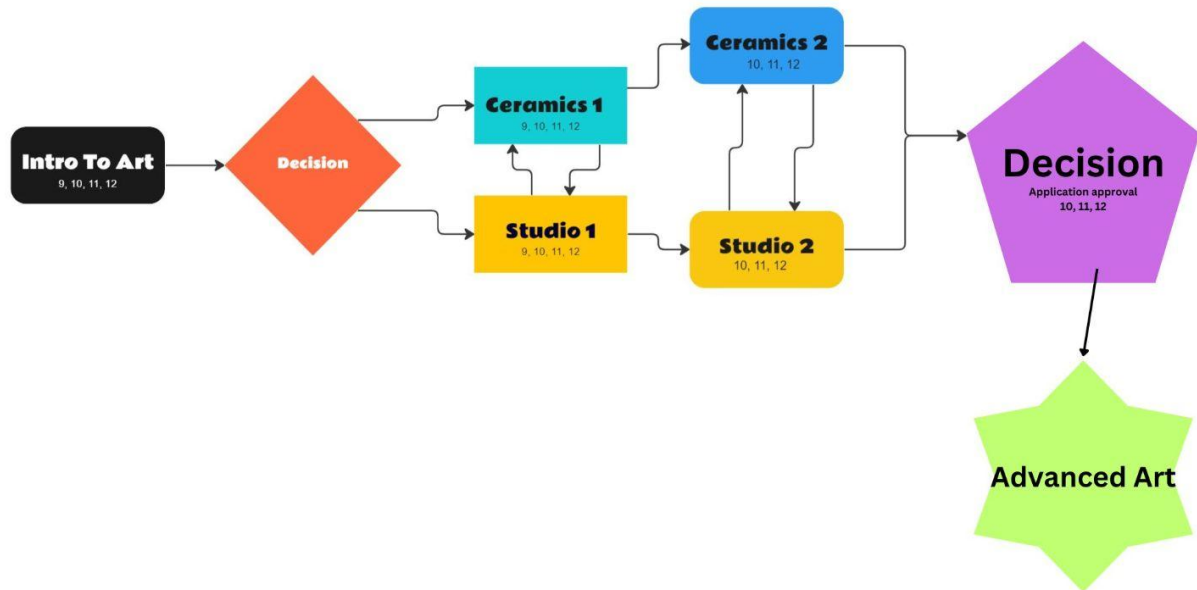
Elective:
Fine Arts

Fees/Dues:
\$20.00

This course is designed to build upon skills learned through Intro to Art, Ceramics, and Studio courses. Students will utilize Elements and Principles of art to conceptualize deeper big ideas to create artwork that is more in depth and personalized. This course will focus on utilizing all skills and incorporating multimedia works of art.

**Note: application process is required.*

Eaton High School Art Education: Class Sequence



Beginning Theatre: Acting & Intro to Theatre

| G |

Course Length:
Semester

Prerequisite:
None

Grade Level:
9, 10, 11, 12

Elective:
Fine Arts

This is an elective course in which you will learn beginning acting skills as well as fundamentals of theatre arts. The class curriculum is comprised mostly of performance evaluations as well as traditional assessments. Units will include: structure of drama, pantomime, improvisation, voice and diction, monologues, and scenes.

Advanced Theatre

| G |

Course Length:
Semester

Prerequisite:
Beginning Theatre

Grade Level:
9, 10, 11, 12

Elective:
Fine Arts

This course will focus on greater development of acting skills, theatre history, Meisner, Stanislavki and play writing. It is a much more of an intensive exploration of the theatre arts with practical experiences in each area.

Theatre Production: Full Length Play

| G |

Course Length:
Semester

Prerequisite:
Beginning Theatre, Advanced Theatre, Audition & Instructor Approval

Grade Level:
10, 11, 12

Elective:
Fine Arts

This course is designed for the more serious Drama student and will require time outside of class. All aspects of play production will be emphasized and most class time will be spent rehearsing, designing, constructing, and preparing for productions. In addition, students will continue to work on advanced acting skills, as well as advanced skills in their technical areas of interest. This class may be repeated for elective Creative Arts credit, as it is the highest-level drama course. Students are responsible for the fall and spring plays. ****Note: This course requires an audition.**

Technology in Performing Arts

| G |

Course Length:
Semester

Prerequisite:
Instructor approval, application process

Grade Level:
9, 10, 11, 12

Elective:
Fine Arts

In this course, students will learn the backstage portion of theatre. They may be trained in lighting, sound, and technology to assist in productions in the auditorium. Studies will include sound mixing and enforcement, lighting design and production, set design and building, and stage management. Students main responsibility will be to design and build the set for the fall and spring main stage shows. This class may require attendance at rehearsals and productions outside of the school day. Please see the director for details.

Introduction to Video and Film Production

| G |

Course Length:
Semester

Prerequisite:
None

Grade Level:
9, 10, 11, 12

Elective:
Fine Arts

This is a semester-long course that provides opportunities for students to write, produce, and edit video and film. Students will learn the essential skills of production including storyboarding, script writing, camera angles, lighting, sound, and editing. They will also be introduced to the basics of Adobe Premiere and TV studio skills. Students are responsible for planning, handling technical equipment, and employing technical knowledge.

Video and Film Production

| G |

Course Length:
Year-Long

Prerequisite:
Passing Grade in Introduction to Video and Film Production

Grade Level:
10, 11, 12

Elective:
Fine Arts

This is a course that is designed for the more serious video student and will require work outside of class times. This course requires students to write, produce, and edit short and medium length video projects. Projects will be written, filmed, and edited by students. Projects will be completed by students both independently and in collaboration with school organizations and/or community members. Students work hands-on to build skills in the areas of production, cinematography, camera operation, sound technology, and digital editing.

Concert Band

| G |

Course Length:
Year Long

Prerequisite:
None

Grade Level:
9, 10, 11, 12

Elective:
Fine Arts

Basic knowledge of how to play an instrument is necessary for this ensemble. This is the entry-level performing instrumental group for Eaton High School covering a wide variety of musical literature. The band will perform approximately 4 concerts each year alongside the other instrumental ensembles. Students will also have the opportunity to participate in regional contests, various honor bands, festivals and other playing opportunities throughout the community. Band members will explore and be exposed to a diverse repertoire of instrumental ensemble music literature from popular to classical “standards” to new and challenging selections.

Wind Ensemble

| G |

Course Length:
Year Long

Prerequisite:
Audition/Instructor Approval Required

Grade Level:
9, 10, 11, 12

Elective:
Fine Arts

This is the highest level of performing instrumental groups in EHS. An audition is required for all members. Auditions are held in late April for the following fall semester. The band will perform at approximately 4 concerts each year alongside the other instrumental ensembles, as well as a regional concert band competition in the spring semester. Students will also have the opportunity to participate in other contests, various honor bands, festivals, and other playing opportunities throughout the community. Band members will explore and be exposed to a diverse repertoire of high-level instrumental ensemble music literature from popular to classical “standards” to new and challenging selections.

Jazz Ensemble

| G |

Course Length:
Year Long

Prerequisite:
Audition/Instructor Approval Required

Grade Level:
9, 10, 11, 12

Elective:
Fine Arts

This is the highest level jazz band at EHS. An audition is required for all members. Auditions are held in late April for the following fall semester. The band will perform at approximately 4 concerts each year alongside the other instrumental ensembles, as well as the award-winning UNC / Greeley Jazz Festival in the spring semester. In this ensemble, students will develop musical skill in jazz studies through theory, history, and music rehearsal of music in the jazz idiom, including all styles of jazz. Students will also have the opportunity to participate in the other contests, various jazz honor bands, and other playing opportunities throughout the community.

Jazz Band

| G |

Course Length:
Year Long

Prerequisite:
None

Grade Level:
9, 10, 11, 12

Elective:
Fine Arts

Basic knowledge of how to play an instrument is necessary for this course. Admittance is open to all students who have had at least one year of experience playing an instrument. This is the entry-level jazz band at EHS. The band will perform at approximately 4 concerts each year alongside the other instrumental ensembles, as well as the award-winning UNC / Greeley Jazz Festival in the spring semester. In this ensemble, students will develop musical skill in jazz studies through theory, history, and music rehearsal of music in the jazz idiom, including all styles of jazz. Students will also have the opportunity to participate in other contests, various jazz honor bands, and other playing opportunities throughout the community.

Marching/Pep Band

| G |

Course Length:
Year Long

Prerequisite:
None

Grade Level:
9, 10, 11, 12

Elective:
Fine Arts

Fees/Dues:
\$100.00

This is the award-winning, competitive marching band program at EHS. This course is open to all students and gives students the opportunity to perform advanced marching and music at football games, parades, and marching competitions. Another essential part to the marching band is the color guard (please let instructor know if you are interested in Color Guard), in which Color Guard members will learn to spin flags and several forms of dance. Additionally, students who participate in 3 years of marching band may waive one semester of physical education. Marching Band involves a commitment to rehearsals during the summer and after school, as any after-school sport would. The marching band competitive season lasts from August until the first week of November, and you must play at least 3 games during the Spring semester. ****Note Requirements: Commitment to rehearsal dates during the summer, after-school practices, Zero-Hour meeting time.**

History of Rock and Roll

| G |

Course Length:
Semester

Prerequisite:
None

Grade Level:
9, 10, 11, 12

Elective:
Fine Arts

This course covers the history of rock and roll from its inception to the present day. Activities will include group band assignments, and music listening tests along with the standard assessment practices.

Music Theory I

| G |

Course Length:
Semester

Prerequisite:
None

Grade Level:
9, 10, 11, 12

Elective:
Fine Arts

If enrolled in any musical ensemble (both band and choir) at EHS, this course is strongly recommended to take concurrently! In this course, students will learn the fundamentals of how to play/sing and understand the musical language. Students will explore music theory concepts including basic note/rhythm reading and writing, chord structures, music writing styles, aural skills/ear training, composition, and performance. This course (and Advanced Music Theory) is an incredible benefit to any musician looking to get better at their instrument and understand how music works, and will greatly aid any student auditioning for any honor/all-state groups. It is strongly recommended that students have previous music experience before taking this class, although it is not completely necessary in order to take the course.

Advanced Music Theory

| G |

Course Length:
Semester

Prerequisite:
Music Theory I

Grade Level:
9, 10, 11, 12

Elective:
Fine Arts

This course is the second, more advanced section of the Music Theory curriculum, after taking Music Theory I. If enrolled in any musical ensemble (both band and choir) at EHS, this course is strongly recommended to take concurrently! In this course, students will learn more advanced skills & fundamentals of how to play/sing and understand the musical language. Students will explore music theory concepts including advanced note/rhythm reading and writing, chord structures, music writing styles, aural skills/ear training, composition, and performance. This course is an incredible benefit to any musician looking to get better at their instrument and understand the more advanced facets of musical performance, and will greatly aid any student auditioning for any honor/all-state groups. ****Note requirements: Must take Music Theory I before enrolling in this course.**

N = Foundation Knowledge & Skills B = Ag & Natural Resources G = STEM, Arts, Design & Industrial Technology
O = Skilled Trade & Technology Science Gr = Health Science & Public Safety P = Hospitality, Human Services & Education
R = Business & Public Administration

Piano Lab

| G |

Course Length: Semester	Prerequisite: None	Grade Level: 9, 10, 11, 12	Elective: Fine Arts	Fees/Dues: \$20.00 for piano book
----------------------------	-----------------------	-------------------------------	------------------------	--------------------------------------

This course is designed for students who want to develop basic piano playing skills, or expand on their existing skills. Students will learn how to read and write piano music, music theory, scales, and proper piano playing techniques. ****NOTE: Students will be required to purchase a piano book.**

Advanced Piano

| G |

Course Length: Semester	Prerequisite: Piano Lab	Grade Level: 9, 10, 11, 12	Elective: Fine Arts	Fees/Dues: \$20.00 for piano book
----------------------------	----------------------------	-------------------------------	------------------------	--------------------------------------

This course is designed for students who have completed Piano Lab or had prior piano lessons. Students will learn how to read and write intermediate to advanced piano music, music theory, scales, and proper piano playing techniques. ****NOTE: Students will be required to purchase a piano book.**

Men's Choir

| G |

Course Length: Year Long	Prerequisite: None	Grade Level: 9, 10, 11, 12	Elective: Fine Arts	Fees/Dues: Men's Choir Shirt & Tie: \$35.00
-----------------------------	-----------------------	-------------------------------	------------------------	--

This is a performance choir that trains and develops voices that naturally lie in the tenor/bass range. It is a year long class, open to students in grades 9-12 that wish to explore a variety of musical styles. Singers will learn to sing in harmony and learn basic music theory along with learning about and adapting to the changing tenor/bass voice. A desire to sing and perform is the only prerequisite to join! ****Note: Students will be required to purchase concert attire.**

Women's Choir

| G |

Course Length: Year Long	Prerequisite: None	Grade Level: 9, 10, 11, 12	Elective: Fine Arts	Fees/Dues: Women's Choir Dress: \$66.00
-----------------------------	-----------------------	-------------------------------	------------------------	---

This is a performance choir that trains and develops voices that naturally lie in the treble range. It is a year long class, open to students in grades 9-12 that wish to explore a variety of musical styles. Singers will learn to sing in harmony and learn basic music theory. A desire to sing and perform is the only prerequisite to join! ****Note: Students will be required to purchase concert attire.**

Bella Voce

| G |

Course Length: Year Long	Prerequisite: Audition & Instructor Approval	Grade Level: 10, 11, 12	Elective: Fine Arts	Fees/Dues: Bella Voce Dress: \$72.00
-----------------------------	---	----------------------------	------------------------	---

This is an audition only, select women's choir. It is a year long class in which students will learn and perform a wide variety of challenging musical styles and advanced music theory. This choir travels for special performances throughout the year.

****Note Students will be required to purchase concert attire.**

Troubadours

| G |

Course Length: Year Long	Prerequisite: Audition & Instructor Approval	Grade Level: 10, 11, 12	Elective: Fine Arts	Fees/Dues: Troubadour Dress: \$72.00 Troubadour Shirt/Vest/Tie: \$50.00
-----------------------------	---	----------------------------	------------------------	---

This is an audition only, select show choir. It is a year long class in which students will learn and perform a wide variety of challenging musical styles, partner choreography, National Anthem at sporting events, and advanced music theory. This choir travels for special performances throughout the year.

****Note: Students will be required to purchase concert attire.**

Introduction to Yearbook and Social Media Production

| G |

Course Length: Semester	Prerequisite: None	Grade Level: 9, 10, 11, 12	Elective: Fine Arts
----------------------------	-----------------------	-------------------------------	------------------------

In this course, students will learn skills necessary to become part of *The Eatonian* Yearbook staff and will be responsible for producing social media posts for our school. Skills include photography, forms of journalistic writing, interviewing, layout and graphic design, and social media ethics. Due to the nature of this class, students will be expected to attend a variety of school functions outside of class time to provide coverage for *Reds Yearbook Social Media*. The work done by the class provides real-world experiences and will contribute to *Eaton HS publications and social media* which strives to maintain a tradition of excellence in which the school and the community can take pride. ****Note: This is a prerequisite to be on the Eaton HS Yearbook Staff.**

Yearbook

| G |

Course Length: Year Long	Prerequisite: Instructor Consent & Introduction to Yearbook Production	Grade Level: 10, 11, 12	Elective: Fine Arts
-----------------------------	---	----------------------------	------------------------

Yearbook staff members will have full responsibility to produce the school yearbook, *The Eatonian*. Skills include forms of journalistic writing and interviewing, photography, layout and design, graphics, advertising, and marketing. Computer skills used include word processing, Adobe Photoshop, Yearbook Avenue design elements, and scanning for camera-ready items. Members are selected to the yearbook staff by the sponsor in the spring. Due to the nature of this class, students will be required to attend a variety of school functions throughout the school year to provide in-depth coverage for *The Eatonian*. There will be a minimum of 8-10 hours per week required by students outside of the regular class in order to cover events and meet yearbook deadlines.

Section VII: Mathematics

Algebra 1A

| N | G |

Course Length:
Year Long

Prerequisite:
None

Grade Level:
9

Elective:
Math

This course reviews essential prerequisite topics and introduces Algebra 1 topics. The course is required for all students with the exception of those who have already successfully mastered the subject in the 7th or 8th grade. The curriculum includes basic Algebraic topics such as operations with positive and negative real numbers, solving and graphing linear equations, solving and graphing linear inequalities and systems, and writing linear equations in multiple forms. Parallel and perpendicular lines are introduced. Additionally, geometric topics such as perimeter, area, and volume will be covered.

****Note: A simple 4-function calculator is recommended for this course.**

Algebra 1B

| N | G |

Course Length:
Year Long

Prerequisite:
None

Grade Level:
9, 10

Elective:
Math

This is a traditional Algebra 1 mathematics course. The class is required for all students with the exception of those who have already successfully mastered the content in the 7th or 8th grade. This is a College Preparatory Mathematics (CPM) course that takes a cooperative approach to a problem-based learning style. The curriculum includes solving and graphing a single linear equation, solving and graphing systems of linear equations, solving quadratic equations, graphing quadratic functions, operations with exponents and polynomials, factoring polynomials and work with geometric sequences and exponential functions. Students will also be introduced to data analysis and probability.

****Note: A simple 4-function calculator is recommended for this course.**

Geometry

| N | G |

Course Length:
Year Long

Prerequisite:
Algebra 1B

Grade Level:
9, 10, 11

Elective:
Math

This course will help students better understand the nature of our mathematics system and help them appreciate the basic structure of Geometry. This is a College Preparatory Mathematics (CPM) course that takes a cooperative approach to a problem-based learning style. Students will develop their abilities of spatial visualization and gain an understanding of coordinate geometry. The course includes frequent algebra review and establishes the complementary relationship between geometry and algebra. Introduction to inductive and deductive reasoning help complement problem solving skills. Students develop clarity and precision of language, and will write similarity and congruence proofs. Topics studied include right triangle relationships such as the Pythagorean Theorem, basic trigonometry, lines, angle relationships, polygons, and circles. Students are also introduced to probability and statistics topics. ****Note: A calculator featuring trigonometric functions (e.g. a TI-30) is recommended for this course.**

Honors Geometry

| N | G |

Course Length:
Year Long

Prerequisite:
A or B in Algebra 1B, qualifying score on a
Placement test & instructor approval

Grade Level:
9, 10, 11

Elective:
Math

Due to the highly rigorous nature of this course, Honors Geometry is only recommended for highly motivated students on the advanced mathematics pathway leading to our most advanced upper-level mathematics courses (Precalculus and Calculus). Honors Geometry will have a greater depth of knowledge of the Geometry topics covered as well as have a greater focus on logical reasoning and mathematical proofs. This is a College Preparatory Mathematics (CPM) course that takes a cooperative approach to a problem-based learning style. Students will develop their abilities of spatial visualization and gain an understanding of coordinate geometry. The course includes frequent algebra review and establishes the complementary relationship between geometry and algebra. Introduction to inductive and deductive reasoning help complement problem solving skills. Students develop clarity and precision of language, and will write similarity and congruence proofs. Topics studied include right triangle relationships such as the Pythagorean Theorem, basic trigonometry, lines, angle relationships, polygons, and circles. Students are also introduced to probability and statistics topics. ****Note: A calculator featuring trigonometric functions (e.g. a TI-30) is recommended for this course.**

Financial Algebra

| N | G |

Course Length:
Year Long

Prerequisite:
Geometry or Honors Geometry

Grade Level:
11, 12

Elective:
Math

Financial Algebra is a mathematics course for upperclassmen that develops logical thinking and problem solving. Students will be able to make informed decisions regarding matters of money and finance in their daily lives. Students apply what they learned in Algebra I and Geometry to topics including personal income, taxes, checking and savings accounts, credit, loans and payments, car leasing and purchasing, home mortgages, stocks, bonds, insurance and retirement, and education planning.

Algebra 2

| N | G |

Course Length:
Year Long

Prerequisite:
Geometry or Honors Geometry

Grade Level:
10, 11, 12

Elective:
Math

This course reinforces and builds upon the foundation laid in Algebra 1B. This is a College Preparatory Mathematics (CPM) course that takes a cooperative approach to a problem-based learning style. Students learn to graph, analyze, and solve linear, quadratic, polynomial, and rational functions, equations, and inequalities using a variety of techniques such as completing the square, quadratic formula, and finding zeros. Students explore properties and operations using powers, roots, and logarithms. They are introduced to conic sections, sequences, and series along with a more advanced discussion of probability and statistics. Finally, students are provided with an overview of trigonometric ratios, functions, graphs, and equations. ****Note: Students are required to have a TI-83, TI-84, or similar Texas Instruments product since these are the calculator types supported by the textbook. These may be rented from the school on a first-come, first-served basis.**

N = Foundation Knowledge & Skills **B** = Ag & Natural Resources **G** = STEM, Arts, Design & Industrial Technology
O = Skilled Trade & Technology Science **Gr** = Health Science & Public Safety **P** = Hospitality, Human Services & Education
R = Business & Public Administration

Honors Algebra 2

Course Length:
Year Long

Prerequisite:
A or B in Geometry or Honors Geometry, a qualifying
score on a placement test, and Instructor Approval

Grade Level:
10, 11, 12

| N | G |
Elective:
Math

Due to the highly rigorous nature of this course, Honors Algebra 2 is only recommended for highly motivated students on the advanced mathematics pathway leading to our most advanced upper-level mathematics courses (Precalculus and Calculus). Honors Algebra 2 will accelerate the pace of Algebra 2 topics covered as well as provide greater depth of knowledge on content vital to the understanding of higher level mathematics while attending to the precision of mathematical language. This is a College Preparatory Mathematics (CPM) course that takes a cooperative approach to a problem-based learning style. Emphasis will be placed on mastery of properties and operations using exponential, logarithmic, radical, and trigonometric functions. Students will also master series and sequences along with a more advanced understanding of statistics and probability. ****Note: Students are required to have a TI-83, TI-84, or similar Texas Instruments product since these are the calculator types supported by the textbook. These may be rented from the school on a first-come, first-served basis. This is a weighted course graded on a 4.5 scale.**

Introduction to Statistics

Course Length:
Year Long

Prerequisite:
Algebra 2 or Honors Algebra 2

Grade Level:
11, 12

| N | G | R |
Elective:
Math

This course is an introductory course in basic statistics. It offers students an opportunity to develop skills in statistical reasoning and data analysis. This is not intended to be an advanced statistics class, but demands a strong background in algebra. Topics covered in this course include descriptive statistics, methods of sampling, tables, graphs, percentiles, concepts of probability, normal and chi square distributions, sampling distributions, confidence intervals, hypothesis testing of one and two means, proportions, binomial experiments, sample size calculations, correlation, and regression. The focus is on statistical ideas related to the fields of medicine, business, education, environmental science, psychology, sports, politics, and entertainment. ****Note: Students are required to have a TI-83, TI-84, or similar Texas Instruments product since these are the calculator types supported by the textbook. These may be rented from the school on a first-come, first-served basis.**

Aims Community College Dual Enrollment

MAT 1340 College Algebra (Year-Long)

Course Length:
Year Long

Prerequisite:
Algebra 2 or Honors Algebra 2

Grade Level:
11, 12

| N | G |
Elective: Fee:
Math \$42

This course focuses on a variety of functions and the exploration of their graphs. Topics include: equations and inequalities, operations on functions, exponential and logarithmic functions, linear and non-linear systems, and an introduction to conic sections. This course provides essential skills for Science, Technology, Engineering, and Math (STEM) pathways. This is a statewide Guaranteed Transfer course in the GT-MA1 category. This course is intended to be taken for college credit, but may be taken without receiving college credit as well; students who earned a D in Algebra 2 may take the course for EHS credit but not for AIMS credit. **** Note: Students are required to have a TI-83, TI-84, or similar Texas Instruments product since these are the calculator types supported by the textbook. These may be rented from the school on a first-come, first-served basis. There are also Dual Enrollment fees for this course if taken for college credit (this is dependent on how many Dual Enrollment credits the student is enrolled in or has enrolled in during previous semesters). This is a weighted course graded in a 4.5 scale.**

N = Foundation Knowledge & Skills B = Ag & Natural Resources G = STEM, Arts, Design & Industrial Technology
O = Skilled Trade & Technology Science Gr = Health Science & Public Safety P = Hospitality, Human Services & Education
R = Business & Public Administration

Precalculus (MAT 1340 College Algebra & MAT 1420 College Trigonometry) | N | G |

Course Length: Year Long	Prerequisite: A or B in Algebra 2 or Honors Algebra 2 MAT 1340 is a prerequisite for MAT 1420	Grade Level: 11, 12	Elective: Math	Fee: \$42
-----------------------------	---	------------------------	-------------------	--------------

Semester 1 - MAT 1340 (College Algebra): This course focuses on a variety of functions and the exploration of their graphs. Topics include: equations and inequalities, operations on functions, exponential and logarithmic functions, linear and nonlinear systems, and an introduction to conic sections. This course provides essential skills for Science, Technology, Engineering, and Math (STEM) pathways. This is a statewide Guaranteed Transfer course in the GT-MA1 category.

Semester 2 - MAT 1420 (College Trigonometry): This course explores trigonometric functions, their graphs, inverse functions, and identities. Topics include: trigonometric equations, solutions of triangles, trigonometric form of complex numbers, and polar coordinates. This course provides essential skills for Science, Technology, Engineering, and Math (STEM) pathways. This is a statewide Guaranteed Transfer course in the GT-MA1 category.

****Note: Students are required to have a TI-83, TI-84, or similar Texas Instruments product since these are the calculator types supported by the textbook. These may be rented from the school on a first-come, first-served basis. There are also Dual Enrollment fees for this course (this is dependent on how many Dual Enrollment credits the student is enrolled in or has enrolled in during previous semesters). This is a weighted course graded in a 4.5 scale.**

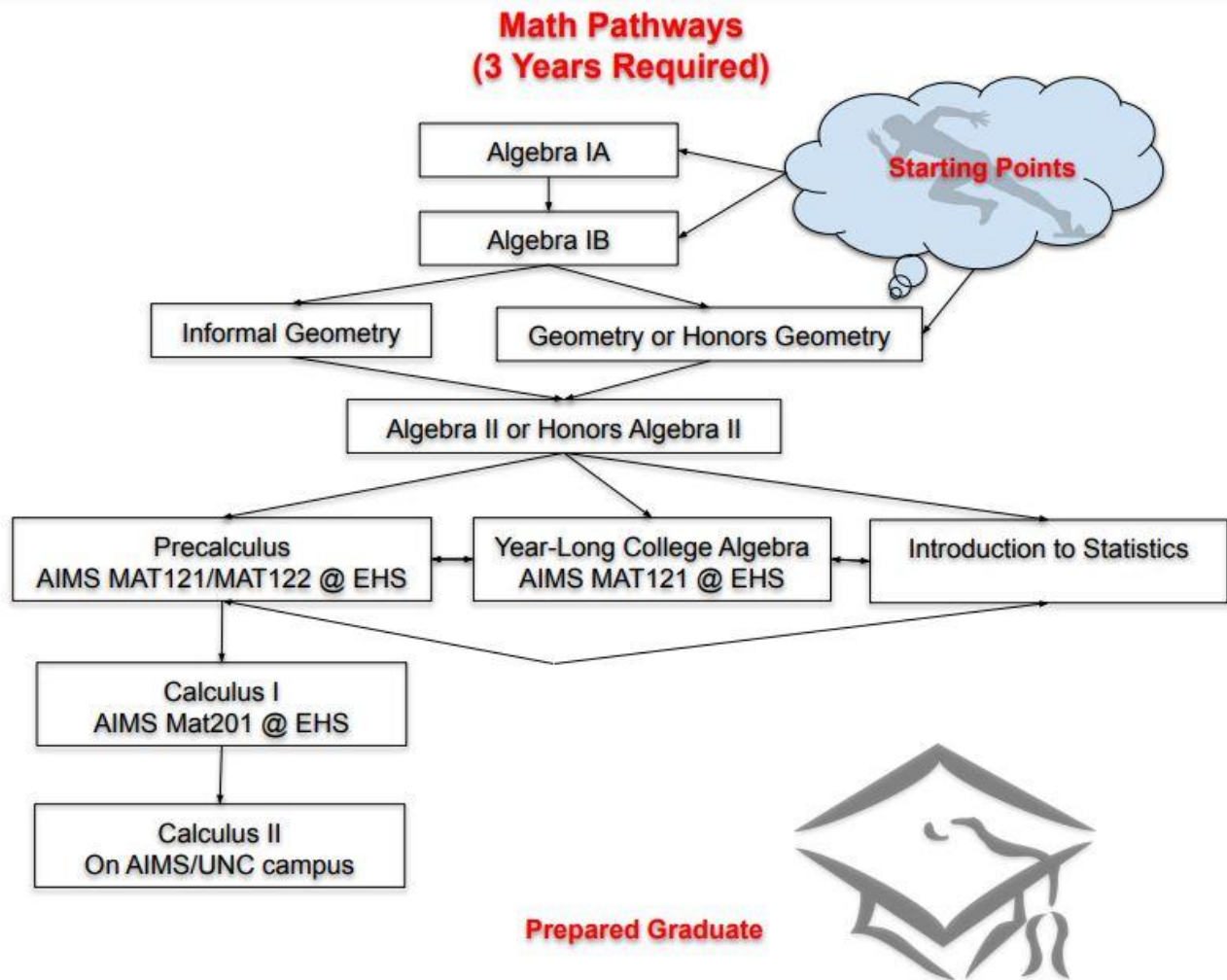
MAT 2410 Calculus I | N | G |

Course Length: Year Long	Prerequisite: C or higher in MAT 1340 & MAT 1420	Grade Level: 12	Elective: Math	Fee: \$42
-----------------------------	---	--------------------	-------------------	--------------

Introduces single variable calculus and analytic geometry. Includes limits, continuity, derivatives, and applications of derivatives as well as the indefinite and definite integrals and some applications. Calculus is an exploration of the mathematics surrounding change. Topics included in this course are: review of functions, limits, continuity, derivatives, applications of derivatives, integration, and applications of integration. This class is suitable for students wishing to enroll in a 4-year university with the intention of going into a STEM field (examples: math, science, statistics, engineering, economic, computer programming ect.) or for those with a genuine interest in mathematics who want to learn and are willing to work hard at it.

****Note: Students are required to have a TI-83, TI-84, or similar Texas Instruments product since these are the calculator types supported by the textbook. These may be rented from the school on a first-come, first-served basis. There are also Dual Enrollment fees for this course (this is dependent on how many Dual Enrollment credits the student is enrolled in or has enrolled in during previous semesters). This is a weighted course graded in a 4.5 scale.**

Mathematics Course Sequence Flowchart



Section VIII: Physical Education & Health

Two credits of PE are required for graduation. One credit or one year of PE/Health must be taken during the freshman year. The second year of the requirement may be fulfilled in a variety of options during grades 10-12. In grades 10-12, a student participating in athletics at Eaton High School may waive 1/2 of the second year's PE requirement. One must complete 3 sport seasons successfully. No grades will be given for athletic waivers. ***Students will be able to repeat the Team Sports / Individual Sports / Personalized Training / Fitness Challenge / Advanced Strength, Conditioning, & Agility courses upon passing. Students will only be allowed to enroll in ONE PE class per semester. Students may not enroll in Personalized Training if enrolled in Advanced Strength, Conditioning, & Agility.***

Freshman PE/Health

| N | Gr |

Course Length:
Year Long

Prerequisite:
None

Grade Level:
9

Elective:
REQUIRED

This is a year-long course dedicated to developing habits for a healthy lifestyle. Each student will be challenged both physically and mentally through a variety of learning experiences such as sport/game activities, lectures, and projects. This course must be repeated if a student fails. Elective courses do not meet this requirement. The curriculum includes:

1. Activities to enhance the Skill/Fitness-related components of the course (P.E.)
2. Activities to enhance the Health-related components of the course (Health)
3. P.E. units include: Volleyball, Softball, Tennis, Flag Football, Indoor Soccer, Floor Hockey, Badminton, Pickleball, Basketball, Archery, Team Handball etc
4. Health Topics Include: General Wellness/Goal Setting, Basic First Aid/Safety/Injury Prevention, Social Media, Nutrition, Drug/Tobacco/Alcohol Education, and Abstinence/STI/STD Education (in conjunction with Weld Waits)

Individual Sports

| Gr |

Course Length:
Semester

Prerequisite:
Freshman P.E.

Grade Level:
10, 11, 12

Elective:
Life Skills or Physical Education

This course is designed for students interested in activities on an individual basis. Activities covered in this class may include: Tennis, Bocce Ball, Pickleball, Badminton, and Bowling. Students will be assessed in the following areas: Performance, Career Readiness Skills, Fitness, Cognitive, and Skills.

Personalized Training

| Gr |

Course Length:
Semester

Prerequisite:
Freshman P.E.

Grade Level:
10, 11, 12

Elective:
Life Skills or Physical Education

This course is offered to any EHS student who has passed freshman physical education and is interested in mental and physical self-improvement. Weight training offers programs developed for men and women in various areas including power training, sport workouts, general fitness, and endurance workouts. Each student, with the help of the instructor, will develop his or her own workouts. It is highly recommended that only people willing to work hard every day take this class; it is not a recreational course. Students who fail this course will not be allowed to retake. Students will be assessed in the following areas: Performance, Career Readiness Skills, Fitness, Cognitive, and Skills. ****Note: Students who fail this course WILL NOT be allowed to retake.**

Team Sports

| Gr |

Course Length:
Semester

Prerequisite:
Freshman P.E.

Grade Level:
10, 11, 12

Elective:
Life Skills or Physical Education

A variety of team sports will be offered on a semester basis. Activities may include Flag football, basketball, volleyball, softball, floor hockey, and indoor soccer. Students will be assessed in the following areas: Performance, Career Readiness Skills, Fitness, Cognitive, and Skills.

Female Fitness Challenge

| Gr |

Course Length:
Semester

Prerequisite:
Freshman P.E.

Grade Level:
10, 11, 12

Elective:
Life Skills or Physical Education

This course is offered to any female student who has passed freshman physical education and is interested in a high level fitness class. This class includes a variety of activities such as; weight training, kickboxing, circuit training, running, crossfit, plyometrics, and more! We will also focus on nutrition, body composition and recovery methods. We will perform a full body assessment at the beginning and end of the semester. Students who fail this course will not be allowed to retake. ****Note: Students who fail this course WILL NOT be allowed to retake.**

Male Fitness Challenge

| Gr |

Course Length:
Semester

Prerequisite:
Freshman P.E.

Grade Level:
10, 11, 12

Elective:
Life Skills or Physical Education

This course is offered to any male student who has passed freshman physical education and is interested in a high level fitness class. This class includes a variety of activities such as; weight training, kickboxing, circuit training, running, crossfit, plyometrics, and more! We will also focus on nutrition, body composition, and recovery methods. We will perform a full body assessment at the beginning and end of the semester. Students who fail this course will not be allowed to retake. ****Note: Students who fail this course WILL NOT be allowed to retake.**

Advanced Strength, Conditioning, & Agility

| Gr |

Course Length:
Semester

Prerequisite:
Pass Personalized Training **QR**
instructor approval.

Grade Level:
9,10, 11, 12

Elective:
Life Skills or Physical Education

This course will be offered to all students on a semester basis. This class will be focused on proper technique in strength training, sprinting, acceleration, jumping & landing, and change of direction. This class is highly recommended to all Student-Athletes as they should continue training year round in order to keep improving athletic qualities and help with injury prevention and any student who is in need of a well structured training program. ****Note: Students who fail this course WILL NOT be allowed to retake.**

Section IX: Science

Earth Science

| N | G |

Course Length:
Year Long

Prerequisite:
None

Grade Level:
9, 10, 11, 12

Elective:
REQUIRED

This is a required science course that covers astronomy, climate and geology. These topics are in accordance with the Colorado Academic Standards in Earth and Space Science. The skills developed in this class include observation, application of concepts, data interpretation and synthesizing information. Earth Science is a prerequisite for General Biology or Honors Biology. This course may be used for the Honors Diploma.

General Biology

| N | G |

Course Length:
Year Long

Prerequisite:
Earth Science

Grade Level:
10, 11

Elective:
REQUIRED if not enrolled in
Honors Biology

This course is a standards-based, in-depth look at major Life Science concepts. Units of study will include biochemistry, cell biology, photosynthesis and respiration, cell reproduction, classic genetics, molecular genetics, evolutionary biology, population genetics, and ecology. A variety of assessments and project-based learning experiences will emphasize content understanding and development of scientific methods and skills. The purpose of this emphasis is to provide a broad scope of life science experiences to expose students to new ideas and information. This course may be used for the Honors Diploma.

Honors Biology

| N | G |

Course Length:
Year Long

Prerequisite:
Earth Science or General Biology with A or B both semesters
or Instructor Approval

Grade Level:
10, 11, 12

Elective:
REQUIRED if not enrolled in
General Biology

This course is a standards-based, in-depth look at major Life Science concepts. Units of study will include biochemistry, cell biology, photosynthesis and respiration, cell reproduction, classic genetics, molecular genetics, evolutionary biology, population genetics, and ecology. A variety of assessments and lab experiments emphasize content understanding and the use of evidence to write for science. The purpose of this emphasis is to prepare students for college coursework in science. Recommended for college-bound students. This course may be used for the Honors Diploma. ***This is a weighted course graded on a 4.5 scale.***

N = Foundation Knowledge & Skills **B** = Ag & Natural Resources **G** = STEM, Arts, Design & Industrial Technology
O = Skilled Trade & Technology Science **Gr** = Health Science & Public Safety **P** = Hospitality, Human Services & Education
R = Business & Public Administration

Chemistry

| N | G |

Course Length: Year Long	Prerequisite: Completion or simultaneously enrolled in Algebra 2, completions or simultaneously enrolled in Honors Biology or completion of General Biology with A or B both semesters or Instructor Approval	Grade Level: 10, 11, 12	Elective: Science
-----------------------------	--	----------------------------	----------------------

This introductory chemistry course engages students in the study of the composition, properties, changes, and interactions of matter. Students will examine the chemical world that surrounds us through laboratory experiments, discussion, lecture, and problem solving. Some topics covered in the year include the following: energy and matter, the periodic table, atomic structure, electron configuration, chemical formulas, chemical reactions, mole concept, stoichiometry, and gas laws. Recommended for college-bound students. ***This course may be used for the Honors Diploma.***

Physics

| G |

Course Length: Year Long	Prerequisite: Completion or simultaneously enrolled in Precalculus, completion of Chemistry or Instructor Approval	Grade Level: 11, 12	Elective: Science
-----------------------------	---	------------------------	----------------------

This course is the study of energy and motion in its many forms. This class focuses on the theories and mathematics that underlie and define the world around us. Main topics will include kinematics, Newton's Laws, energy, momentum, rotational dynamics, waves, and electricity. Students will engage in lectures, discussions, and problem solving designed to prepare them for an introductory college course in physics. ***This course may be used for the Honors Diploma. This is a weighted course graded on a 4.5 scale.***

Human Anatomy and Physiology

| G |

Course Length: Year Long	Prerequisite: Completion of Honors Biology, completion or simultaneously enrolled in Chemistry with Instructor Approval	Grade Level: 11, 12	Elective: Science	Fees/Dues: \$50.00 Lab Fee
-----------------------------	--	------------------------	----------------------	-------------------------------

This course is the study of form and function in the body. The first semester focuses on the physiology of systems, with emphasis on the interrelationships between form and function at the gross and microscopic levels of organization. The second semester focuses on body mechanics and gross anatomy, aided by an in-depth, two-and-a-half month cat dissection. Students must participate in the cat dissection second semester. This class provides students with an in-depth understanding and working knowledge of the human body. ***This course may be used for the Honors Diploma. This is a weighted course graded on a 4.5 scale.***

Physical Science

| N | B | G |

Course Length: Year Long	Prerequisite: Completion of General Biology or Honors Biology	Grade Level: 11, 12	Elective: Science
-----------------------------	--	------------------------	----------------------

This course is designed to provide students with the scientific principles, concepts, and methodologies required to understand basic principles of chemistry and physics. Physics concepts covered will include laws of motion, forces, and conservation and conversions of energy. Chemistry concepts covered will include composition and classification of matter, atomic structure, periodic table trends, chemical bonding, and chemical reactions. Students will examine the physical world that surrounds us through laboratory experiments, discussion, lecture, and problem solving.

Aims Community College Dual Enrollment

BIO 1111 Gen College Biology I w/Lab

| G |

Course Length: Year Long	Prerequisite: Completion of Chemistry and completion of General Biology or Honors Biology with A or B both semesters, Instructor Approval required	Grade Level: 11, 12	Elective: Science	Fees/Dues: \$35.00 Lab Fee
-----------------------------	--	------------------------	----------------------	-------------------------------

This course examines the fundamental molecular, cellular, and genetic principles characterizing plants and animals. Includes cell structure and function, and the metabolic processes of respiration, and photosynthesis, as well as cell reproduction and basic concepts of heredity. The course includes laboratory experience. ***This course is offered for dual enrollment with Aims Community College. Students will be responsible for cost of books, materials and supplies for the course. This course may be used for the Honors Diploma. This is a weighted course graded on a 4.5 scale.***

Section X: Social Studies

Please Note: Civics is a required senior class.

World Geography

| N |

Course Length: Year Long	Prerequisite: None	Grade Level: 9	Elective: REQUIRED
-----------------------------	-----------------------	-------------------	-----------------------

This is an introductory level geography course that is a year long in length. In this class, students will develop and extend their knowledge and understanding of a variety of regions of the world and many of their most prominent social, cultural, and physical characteristics. Students will encounter and discuss theories, models, and analyze a variety of historical and contemporary issues in the context of real places.

World History

| N |

Course Length: Year Long	Prerequisite: World Geography	Grade Level: 10	Elective: REQUIRED
-----------------------------	----------------------------------	--------------------	-----------------------

In this course, students examine the major ideas and events that shaped the modern world. Because of the enormous content inherent to World History, it is necessary to use a comparative approach in order to present the students with a sampling of numerous regions, cultures, and historical ideas. The students define what core ideas that all human beings share. Essentially, the students identify what it means to be a human being through several common characteristics: culture, society, agency/ self-determination, security/safety, human dignity, and compassion. The course is broken down into several units of study including: world religion, government, revolution, colonization, war, and genocide. Beside the historical component of the course, World History focuses on skill development. Students will work toward mastery of several skills that will assist them at the next level of social studies and in life. These skills include research, writing, reading, summarization, cause-effect determination, discussion, and map-skills. Each of these skills leads the students to the ultimate goal of the social studies curriculum which is the development of independent life-long thinkers.

US History

| N |

Course Length:
Year Long

Prerequisite:
World History

Grade Level:
11

Elective:
REQUIRED

In this course called “Twentieth Century American History”, students examine the major American historical eras of the Twentieth Century. The goal of students is to define what it means to be an American. The following concepts are emphasized: The American Dream, duty, patriotism, heroism, individualism, rights and responsibilities, sacrifice, loyalty, and courage. The first semester will review US history from the 1890s to the 1940s covering American Imperialism, the Progressive Era, the Roaring Twenties, and the Depression and the New Deal. Second semester will review American History from the 1940s through the 2000s to include World War II from the American perspective, the Cold War, the 1950s, 1960s, and 1970s to the present. Multiple primary and secondary sources are used to interpret the various concepts and eras and the skills of reading for comprehension, critical thought, historical analysis, and argumentative writing are a key focus in this course.

Civics

| N |

Course Length:
Semester

Prerequisite:
None

Grade Level:
11 - 12

Elective:
REQUIRED

Prior years EHS Civics Course Description

The study of Civics serves to prepare students to be thoughtful, active participants in our local and national democracy. The class will provide students with a framework for understanding present-day cultural, economic, political and social conditions, through teaching them the essential interrelatedness of the individual to community, society, and country as well as other nations and cultures. Throughout the class, students will study complex historical and social issues to help them become informed citizens in an increasingly global society. Through exploration of the United States governmental system and its diverse heritage, students will gain an understanding of themselves as members of American society.

2022-2023 and beyond Senior EHS Course Description

This course prepares students for their roles as informed, connected and engaged American citizens and global citizens ready to participate in the American political system. The class will provide students with a framework for understanding present-day cultural, economic, political and social conditions, through teaching them the essential interrelatedness of the individual to community, society, and country as well as other nations and cultures. Students will know the basic building documents of the American political system including, but not limited to, the Declaration of Independence, The US Constitution, and the Bill of Rights. Students will know the history and impact of these documents on current policies. Students will investigate the structure of the American government system, the three branches, Federalism and how these philosophies interact to form the American governmental and political systems. Additionally, the class will emphasize the importance of students participating as citizens through the voting process, volunteerism, and actively engaging in their local, state, and national communities.

Contemporary Issues

| R | N |

Course Length:
Semester

Prerequisite:
World Geography, World History, and
completion/simultaneously enrolled in US History

Grade Level:
11, 12

Elective:
Social Studies

The emphasis of the course will be analyzing political, social, economic, and environmental issues that affect the United States and the World. To understand the world we live in, it is vital to understand the people of today’s world and their thought processes. Studying, reading, and discussion of history, government and geography will be an integral part of this class. The course will stress the use of online periodicals (newspapers & magazines), documentaries, and other Internet resources to explore today’s world through research, analysis, group work, critical thinking, and discussion.

N = Foundation Knowledge & Skills **B** = Ag & Natural Resources **G** = STEM, Arts, Design & Industrial Technology
O = Skilled Trade & Technology Science **Gr** = Health Science & Public Safety **P** = Hospitality, Human Services & Education
R = Business & Public Administration

US Military History

Course Length:
Semester

Prerequisite:
World Geography, World History, and completion/simultaneously enrolled in US History

Grade Level:
11, 12

| R | N |
Elective:
Social Studies

This is an inquiry based course where students will investigate the role of the armed forces in American society. The course traces the beginnings of a uniquely American military and focuses not only on wars, leaders and strategy, but on such topics as civilian attitudes toward a standing army, soldier motivation, defense funding, anti-war movements and women's wartime roles. This course also covers major military conflicts in which the United States has been involved with an emphasis on cause-effect relationships.

Psychology

Course Length:
Semester

Prerequisite:
World Geography, World History, and completion/simultaneously enrolled in US History

Grade Level:
11, 12

| N | P |
Elective:
Social Studies

Why did you choose to wear the clothing you are wearing right now? Why do people react to social media posts? Why do athletes get mental blocks that inhibit them from performing? This honors-level course is a one semester introduction to Psychology, or the study of human behavior and mental processes. It will help to explain how human behavior is affected by their mental and physical states, and how a human's environment influences their behavior. Some of the topics that will be covered in the class include aspects that influence human behavior, gender roles, personality, motivations, and psychological disorders. The content of the class will be covered in classroom discussions, activities, seminars, and videos. The class is designed to equip students with critical thinking, organizational, discussion, and analytical skills necessary for higher education. This class will challenge you to be open-minded, and ask you to look at the human animal and his mind from different perspectives. Students will also read a novel as part of a culminating class project. The book will be used to explore possible explanations for individual behavior, thoughts, motivation, and possible psychological disorders. ***This is a weighted course graded on a 4.5 scale.***

Aims Community College Dual Enrollment

HIS 1210 US History to Reconstruction

Course Length:
Semester

Prerequisite:
World Geography, World History, and US History

Grade Level:
11,12

| G | R | N |
Elective:
Social Studies

This course explores events, trends, peoples, groups, cultures, ideas, and institutions in North America and United States history, including the multiple perspectives of gender, class, and ethnicity, between the period when Native American Indians were the sole inhabitants of North America and the American Civil War. Focuses on developing, practicing, and strengthening the skills historians use while constructing knowledge in the discipline. This course is available to Juniors to be taken in place of required US History. Juniors wanting to take this course must have earned a B or better in World Geography and World History. **Juniors taking this course must also take HIS 1220 to fulfill EHS US History graduation requirement. College credit will be earned with a C grade or better from Aims Community College. This is a weighted course graded on a 4.5 scale.**

HIS 1220 US Hist Since Civil War

Course Length:
Semester

Prerequisite:
World Geography, World History, and US History

Grade Level:
11,12

| G | R | N |
Elective:
Social Studies

This course explores events, trends, peoples, groups, cultures, ideas, and institutions in United States History, including the multiple perspectives of gender, class, and ethnicity, between the period of the American Civil War and the present. Focuses on developing, practicing, and strengthening the skills historians use while constructing knowledge in the discipline. This course is available to Juniors to be taken in place of required US History. Juniors wanting to take this course must have earned a B or better in World Geography and World History. **Juniors taking this course must also take HIS 1210 to fulfill EHS US History graduation requirement. College credit will be earned with a C grade or better from Aims Community College. This is a weighted course graded on a 4.5 scale.**

N = Foundation Knowledge & Skills B = Ag & Natural Resources G = STEM, Arts, Design & Industrial Technology
O = Skilled Trade & Technology Science Gr = Health Science & Public Safety P = Hospitality, Human Services & Education
R = Business & Public Administration

Section XI: Special Programs

An individualized program is developed to meet the needs of the student and gain growth in the subject area (Math or English) so a solid knowledge base is developed to move on to the next level class. State academic standards are used as the guidelines in developing the curriculum taught. **REFERRAL ONLY.**

Study Skills

| N |

Course Length:
Year Long

Prerequisite:
Referral, evaluation, and placement by committee

Grade Level:
9, 10

Elective:
Elective

This is an individualized course designed to improve study habits while supporting each student's individual needs in other core classes. Curriculum topics include time management, test taking skills, listening skills, note taking, summary writing, and research skills. These topics are taught while giving assistance and support in other high school courses. Admittance to this program is by referral only.

Transition

| N |

Course Length:
Year Long

Prerequisite:
Referral, evaluation, and placement by committee

Grade Level:
11, 12

Elective:
Life Skills/Applied Arts

This class is an individualized course designed to assist students transition from school to work, post-secondary education, and in the community. Topics will include: Self-determination, money management, career exploration, goal setting, independent living, and post-secondary educational options.

Math Interventions

| N |

Course Length:
Year Long

Prerequisite:
Referral, evaluation, and placement by committee

Grade Level:
9, 10, 11, 12

Elective:
Elective

This is an individualized course designed to improve mathematical calculation skills, problem solving, fluency, and mathematical vocabulary as a complement to the students regular Algebra Class. Students will study a variety of mathematical topics including addition, subtraction, multiplication and division facts; geometry and measurement; patterns, functions and algebra; probability and statistics; and story problems. This course utilizes weekly assessment to monitor progress. Admittance to this course is by referral only.

Literature Interventions

| N |

Course Length:
Year Long

Prerequisite:
Referral, evaluation, and placement by committee

Grade Level:
9, 10, 11

Elective:
Elective

This course is designed to help students build the essential grammar, reading, speaking, and composition skills that will serve as a foundation for later English courses. This course will build and scaffold essay writing skills. It will also provide students with instruction in note-taking, listening skills, study skills, critical thinking skills, and vocabulary development. This course is an introductory course and will include novels and short stories. Students will also work on fluency and understanding literature. Monthly assessments are given to monitor progress. Placement is based on assessments and instructor approval.

English 12 Capstone

| N |

Course Length:
Year Long

Prerequisite:
Referral, evaluation, and placement by committee

Grade Level:
12

Elective:
English

This course will look at a spectrum of literacy skills including public speaking, creative writing, research and expository writing, and will culminate in a capstone project showcasing the students skills. Students will be introduced to various styles of speeches including informative, persuasive, and ceremonial. They will explore their own interests in creative writing while learning and creating the structure of a story, types of poetry, and memoir writing. Students will enhance their research skills and compose pieces of expository writing. Students will use the skills from the year to create and present a capstone project. Monthly assessments are given to monitor progress. Placement is based on assessments and instructor approval.

N = Foundation Knowledge & Skills **B** = Ag & Natural Resources **G** = STEM, Arts, Design & Industrial Technology
O = Skilled Trade & Technology Science **Gr** = Health Science & Public Safety **P** = Hospitality, Human Services & Education
R = Business & Public Administration

English Language Learners (ELL)

| N |

Course Length:
Year Long

Prerequisite:
Referral, evaluation, and placement by committee

Grade Level:
9, 10, 11, 12

Elective:
Elective

This is an individualized course designed to improve study habits while supporting each student's individual needs in other core classes. Curriculum topics include time management, test taking skills, listening skills, note taking, summary writing, and research skills. These topics are taught while giving assistance and support in other high school courses. Admittance to this program is by referral only.

Academic Accelerator

| N |

Course Length:
Semester Long

Prerequisite:
Referral, evaluation, and placement by committee

Grade Level:
9, 10, 11, 12

Elective:
Elective

This is a course designed to help support students in academic and fundamental skills necessary to succeed and accelerate their education. Reinforcement strategies such as goal setting, individualized instruction, whole group/small group targeted instruction, test taking skills, and graduation requirement support are offered in order to meet specific areas of growth. Students may be placed in this class based on their individual needs and referral.

Section XII: STEM Education

Principles of Engineering

| G |

Course Length:
Semester

Prerequisite:
None

Level
3

Grade Level:
9, 10, 11, 12

Elective:
Life Skills/Applied Arts

Principles of Engineering and Technology is designed to introduce students to the STEM cluster for students interested in learning more about careers in engineering and technology. This course covers basic skills required for engineering and technology fields of study. Upon completion of this course, students are able to identify and explain the steps in the engineering design process. They can evaluate an existing engineering design, use fundamental sketching and engineering drawing techniques, complete simple design projects using the engineering design process, and effectively communicate design solutions to others.

Introduction to Engineering

| G |

Course Length:
Semester

Prerequisite:
None

Level
3

Grade Level:
9, 10, 11, 12

Elective:
Life Skills/Applied Arts

Introduction to Engineering Design is a fundamental course in the Engineering and Technology Program of Study for students interested in developing their skills in preparation for careers in engineering and technology. The course covers essential knowledge, skills, and concepts required for postsecondary engineering and technology fields of study. Upon completion of this course, proficient students are able to describe various engineering disciplines, as well as admissions requirements for postsecondary engineering and engineering technology programs in Colorado. They will also be able to identify simple and complex machines, calculate various ratios related to mechanisms, explain fundamental concepts related to energy, understand Ohm's Law, follow the steps in the engineering design process to complete a team project, and effectively communicate design solutions to others.

Digital Electronics

| G |

Course Length:
Year Long

Prerequisite:
Computer Science Foundations IA/IB

Grade Level:
10, 11, 12

Elective:
Life Skills/Applied Arts

Digital Electronics is intended to provide students with an introduction to the basic components of digital electronic systems and equip them with the ability to use these components to design more complex digital systems. Proficient students will be able to (1) describe basic functions of digital components (including gates, flip flops, counters, and other devices upon which larger systems are designed), (2) use these devices as building blocks to design larger, more complex circuits, (3) implement these circuits using programmable devices, and (4) effectively communicate designs and systems. Students develop additional skill in technical documentation when operating and troubleshooting circuits. Upon completion of the Digital Electronics course, students will be able to design a complex digital system and communicate their designs.

Robotics & Automated Systems

| G |

Course Length:
Year Long

Prerequisite:
Coding IA & IB

Grade Level:
11, 12

Elective:
Life Skills/Applied Arts

Robotics & Automated Systems is an applied course for students who wish to explore how robots and automated systems are used in industry. Upon completion of this course, students will have an understanding of the historical and current uses of robots and automated systems; programmable circuits, interfacing both inputs and outputs; ethical standards for engineering and technology professions; and testing and maintenance of robots and automated systems.

Introduction to Coding

| G |

Course Length:
Year Long

Prerequisite:
None

Grade Level:
9, 10, 11, 12

Elective:
Life Skills/Applied Arts

This is a year-long introductory course to learn Python programming. No coding experience is needed. Students begin by mastering fundamental coding concepts such as statements, variables, expressions, conditional and loops. Students also gain proficiency with advanced topics including software libraries, automation and sprite-based graphics. Students who wish to continue the four year program can test for Python programming credentials and compete for internships with tech companies in Northern Colorado.

Coding IA & IB (Python 1 & 2)

| G |

Course Length:
Year Long

Prerequisite:
Intro to Coding

Grade Level:
10, 11, 12

Elective:
Life Skills/Applied Arts

As the second year of the TechSmart program, students build off of Intro to Coding. During the course, students master fundamental data structures such as lists, tuples and dictionaries. Students also gain proficiency with advance topics including for-each loops, string operations, web APIs and user- defined functions. Students prepare and can take the Python Institutes' Certified Entry-Level Python Programmer certification exam.

Coding IIA & IIB (Python 3 & 4)

| G |

Course Length:
Year Long

Prerequisite:
Coding IA/IB

Grade Level:
10, 11, 12

Elective:
Life Skills/Applied Arts

As the third year of the TechSmart program, students build off Coding IA/IB. During the course, students master fundamental coding concepts such as file systems, information storage and retrieval and error handling. Student also gain proficiency with advanced topics including user-defined modules, data as values, data as references and graphical user interfaces. Students prepare for and can take the Microsoft's Introduction to Programming Using Python certification exam.

Coding IIIA & IIIB (HTML & Web Design)

| G |

Course Length:
Year Long

Prerequisite:
Coding IIA/IIIB

Grade Level:
11, 12

Elective:
Life Skills/Applied Arts

As the capstone course for the TechSmart program, this course leverages all of the coding from previous years. Student master object-oriented programming concepts through the use of classes and domain-driven design. Student also explore several different possible future path for study and careers in computer science and compete for internships with tech companies in Northern Colorado.

Technology Intern

| G |

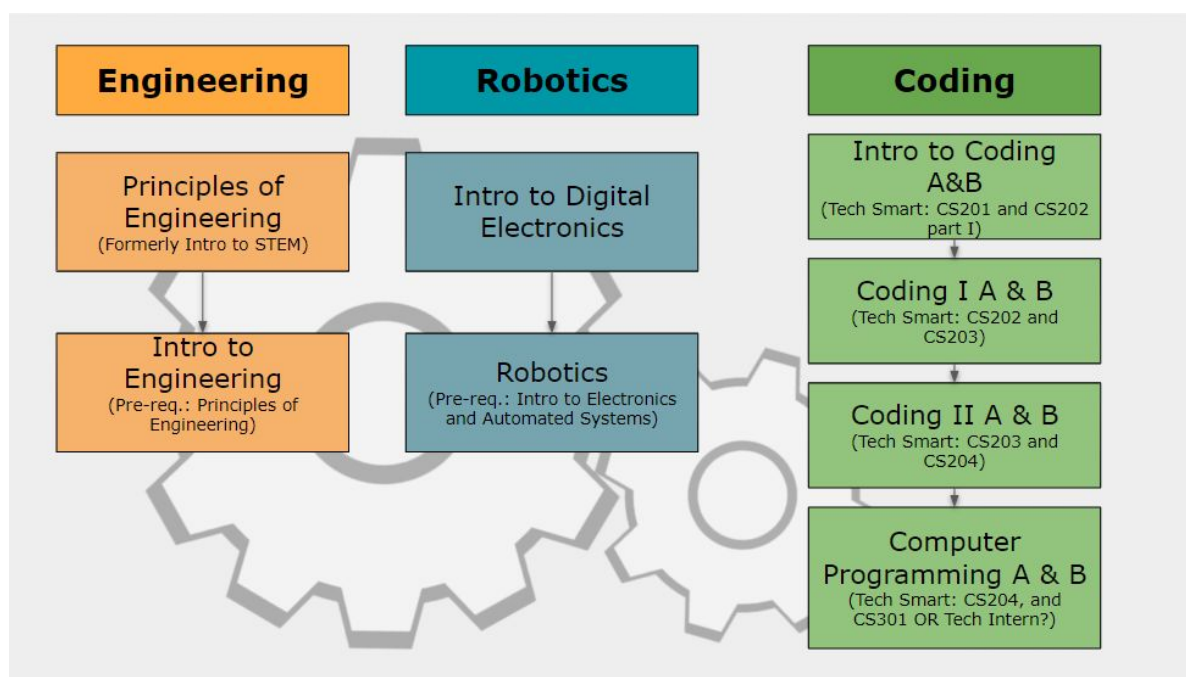
Course Length:
Semester or Year Long

Prerequisite:
Passing Coding I A/B, Coding II A/B, Computer
Programming III A/B
Application and 3.0 GPA or higher

Grade Level:
11, 12

Elective:
Life Skills/Applied Arts

In this course, students can go beyond the basic computer courses and delve into programming for both software and hardware purposes. Students will also have practical experience in troubleshooting and building networking systems throughout the school district. This program will be monitored by the Counseling Department while collaborating with the Technology Department. Attendance is important. Applications are in the counseling department.



N = Foundation Knowledge & Skills **B** = Ag & Natural Resources **G** = STEM, Arts, Design & Industrial Technology
O = Skilled Trade & Technology Science **Gr** = Health Science & Public Safety **P** = Hospitality, Human Services & Education
R = Business & Public Administration

Section XIII: World Language

Spanish 1

| R |

Course Length: Year Long Prerequisite: None Grade Level: 9, 10, 11, 12 Elective: World Language
 Must pass first semester to move onto second semester

This course is for beginning Spanish learners. Students acquire a basic knowledge of Spanish through stories, grammar lessons, vocabulary practices as well as a variety of other activities including songs, readings, games and dialogues. Students learn about the geographic and cultural diversity of the Spanish-speaking world with an emphasis on the culture and geography of Mexico. One year of a foreign language is required for EHS graduation.

Spanish 2

| R |

Course Length: Year Long Prerequisite: Spanish 1 with an 80% both semesters. Grade Level: 10, 11, 12 Elective: World Language
 Must have 70% first semester to move onto second semester (9 with Instructor Approval)

This course builds on the skills of the previous year through the teaching of grammatical concepts, sentence structure, and vocabulary. Students will advance their skills in reading, writing, listening to, and speaking Spanish. Students also learn about the culture and geography of Spanish speaking countries in Central and South America.

Spanish 3

| R |

Course Length: Year Long Prerequisite: Spanish 2 with 80% in both semesters and teacher signature. Grade Level: 11, 12 Elective: World Language
 Must pass first semester with 80% to move onto second semester. (10 with Instructor Approval)

In this course, students progress to an intermediate level by acquiring expanded vocabulary and advanced grammar through a variety of activities including note-taking in Spanish, readings, dialogues, songs, games, and worksheets. Students also learn more about the geography and culture of the Spanish-speaking world with an emphasis on Spain and South America. Instruction is primarily in Spanish. This is a weighted class for grading purposes. ***This is a weighted course graded on a 4.5 scale.***

Spanish for Heritage Speakers 1

| R |

Course Length: Year Long Prerequisite: Ability to communicate verbally in Spanish Grade Level: 9, 10, 11, 12 Elective: World Language
 Must pass first semester to move onto second semester

This course is for students who already understand and speak some Spanish. We will work to improve speaking, reading and writing skills. Study is based on grammar, vocabulary acquisition, literature, culture, discussion, writing, and correctness of expression. We will learn about the geography and cultures of the Spanish-speaking world, including Spain and Latin America, with a primary focus on the history and culture of Mexico, the border, and the Chicano movement.

Spanish for Heritage Speakers 2

| R |

Course Length: Year Long Prerequisite: Spanish for Heritage Speakers 1 80% in both semesters Grade Level: 10, 11, 12 Elective: World Language
 Must have 70% first semester to move onto second semester

This course is for students who speak and understand Spanish who have taken Level 1. Students will continue improving their grammar, speaking, and writing skills while increasing their knowledge of Hispanic geography and culture. The focus of Level 2 are the countries and cultures of Central and South America.

N = Foundation Knowledge & Skills **B** = Ag & Natural Resources **G** = STEM, Arts, Design & Industrial Technology
O = Skilled Trade & Technology Science **Gr** = Health Science & Public Safety **P** = Hospitality, Human Services & Education
R = Business & Public Administration

Aims Community College Dual Enrollment

SPA 1011 Spanish Language I (Spanish for Heritage Speakers Level 3)

Course Length:
Year Long

Prerequisite:
Spanish for Heritage Speakers 2 with 80% or higher and teacher signature
Must maintain a 70% or higher to earn college credit

Grade Level:
11, 12

Elective:
World Language

| R |

This course develops students' interpretive, interpersonal, and presentational abilities in Spanish. The use of Spanish is integrated in the cultural contexts in which the language is used. We will continue to study advanced grammar and acquire vocabulary, as well as learn about the art, history, music, geography and culture of the Spanish-speaking world, with an emphasis on Spain. This is a two semester course emphasizing the development of a functional proficiency in the four basic language skills of listening, speaking, reading and writing. ***This is a weighted course graded on a 4.5 scale.***

SPA 1011 Spanish Language I (Spanish 4)

Course Length:
Year Long

Prerequisite:
Spanish 3 with 80% or higher and teacher signature.
Must maintain a 70% or higher to earn college credit

Grade Level:
12

Elective:
World Language

| R |

This course develops students' interpretive, interpersonal, and presentational abilities in Spanish. The use of Spanish is integrated in the cultural contexts in which the language is used. We will continue to study advanced grammar and acquire vocabulary, as well as learn about the art, history, music, geography and culture of the Spanish-speaking world, with an emphasis on South America, Mexico, and the border. This is a two semester course emphasizing the development of a functional proficiency in the four basic language skills of listening, speaking, reading and writing. ***This is a weighted course graded on a 4.5 scale.***

Colorado Career Cluster Model

R

Management and Administration

- Accounting
- Banking Services
- Corporate Finance
- Business Information Technology
- Corporate/General Management
- Human Resource Management
- Operations Management

Marketing

- Marketing Communications
- Marketing Management
- Marketing Research
- Merchandising
- Professional Sales/Sales Management

Government & Public Administration

- Foreign Service
- Governance
- Legal Services
- Planning
- Public Management & Administration
- Regulation
- Revenue & Taxation

Business, Marketing & Public Administration

CTSOs – DECA, FBLA, PBL

Hospitality, Human Services & Education (+)

Hospitality & Tourism

- Lodging
- Recreation, Amusements & Attractions
- Restaurants, Food & Beverage Services
- Travel & Tourism

Human Services

- Consumer Services
- Counseling & Mental Health Services
- Early Childhood Development
- Family & Community Services
- Personal Care Services

Education & Training

- Administration and Administrative Support
- Professional Support Services
- Teaching and Training

+ FACS Core & World Of Work (WOW)

CTSOs – FCCLA, SkillsUSA

P

B

Agriculture, Food & Natural Resources

- Animal Science*
- Agribusiness Systems
- Food Products & Processing Systems*
- Natural Resource & Environmental Systems*
- Plant Science*
- Power, Structural & Technical Systems*

Energy

- Electromechanical Generation & Maintenance*
- Electrical Energy Transmission & Distribution*
- Energy Efficiency & Environmental Technology*
- Fossil Energy Extraction, Processing & Distribution*
- Renewable Energy Production*

CTSO – FFA

* STEM affiliated pathway

Agriculture, Natural Resources & Energy

N

Postsecondary & Workforce Readiness (PWR)

Entrepreneurial: Critical Thinking & Problem Solving, Creativity & Innovation, Inquiry & Analysis, Informed Risk Taking

Personal: Initiative & Self-Direction, Personal Responsibility & Self-Management, Adaptability & Flexibility, Learning Style Awareness

CMCE: Core Academic Foundation, Collaboration & Teamwork, Communication, Global & Cultural Awareness

Professional: Time & Work Management, Career Literacy, Grit & Resilience, Work Ethic, Dependability & Reliability

Academic: Application of Knowledge & Skills, Evaluation, Discernment

+ CTE Pathway for Special Populations include:
Alternative Cooperative Education (ACE) CTSO – [SC]²

Health Science, Criminal Justice & Public Safety

Health Science

- Biotechnology Research & Development*
- Diagnostic Services
- Health Informatics
- Supportive Services
- Therapeutic Services

Law, Public Safety, Corrections & Security

- Correction Services
- Emergency & Fire Management Services
- Law Enforcement Services
- Security & Protective Services

CTSOs – HOSA & SkillsUSA

* STEM affiliated pathway

GR

G

STEM (Science, Technology, Engineering & Math)
See also STEM affiliated pathways noted by*

- Research, Exploration & Innovation
- Design, Development & Application

Arts, A/V Technology and Communication

- Audio/Video Technology & Film
- Journalism & Broadcasting
- Performing Arts
- Printing/Publishing
- Visual & Design Arts^A

Information Technology

- Information Support and Services
- Interactive Media
- Network Systems & Telecommunications*
- Programming & Software Engineering*

CTSOs – TSA, CCCSO, SkillsUSA, AFCLA

STEM, Arts, Design & Information Technology

Skilled Trades & Technical Sciences

Architecture & Construction

- Construction
- Design & Pre-construction*
- Maintenance & Operations

Transportation, Distribution & Logistics

- Facility & Mobile Equipment Maintenance
- Health, Safety & Environmental Management
- Logistics, Planning & Management Services
- Planning, Management & Regulation
- Logistics & Inventory Control
- Manufacturing Production
- Maintenance, Installation & Repair
- Production/Process Technology*
- Quality Assurance

Manufacturing

- Health, Safety & Environmental Assurance
- Logistics & Inventory Control
- Manufacturing Production
- Maintenance, Installation & Repair
- Production/Process Technology*
- Quality Assurance

Transportation, Distribution & Logistics

- Facility & Mobile Equipment Maintenance
- Health, Safety & Environmental Management
- Logistics, Planning & Management Services
- Planning, Management & Regulation
- Logistics & Inventory Control
- Manufacturing Production
- Maintenance, Installation & Repair
- Production/Process Technology*
- Quality Assurance

CTSOs – TSA, SkillsUSA

* STEM affiliated pathway

O