



בלשנות
התורה ר' נחמן
בעיקריות שלישית
אין זמין קיט יזג



2023-2024

PRODUCT LIST

TABLE OF CONTENTS

4 | Sliced Deli

7 | Sausages

8 | Franks

10 | Ready Meals

12 | Frozen

14 | Bulk Deli

16 | Bulk Frozen

17 | Chicken Tray Pack

18 | Bulk Chicken

21 | Item List

SLICED DELI



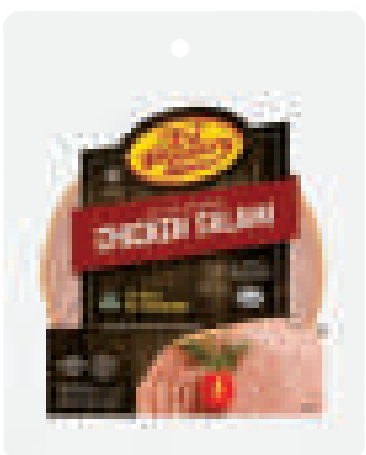
Sliced Smoked Chicken Breast
12/6 OZ.

Item# 11411



Sliced Oven Roasted Chicken Roll
12/6 OZ.

Item# 11422



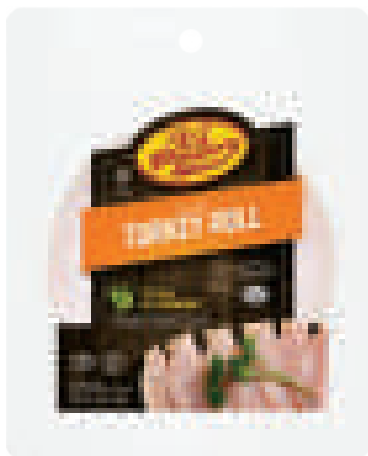
Sliced Smoked Chicken Salami
12/6 OZ.

Item# 11424



Sliced Smoked Flavor Turkey Breast
12/6 OZ.

Item# 11417



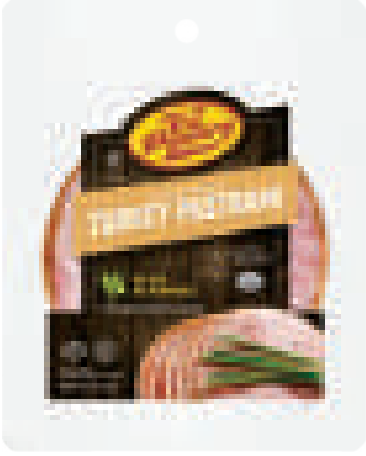
Sliced Turkey Roll
12/6 OZ.

Item# 11415



Family Pack Sliced Home Style Turkey Roll
6/16 OZ.

Item# 11405



Sliced Smoked Turkey Pastrami
12/6 OZ.

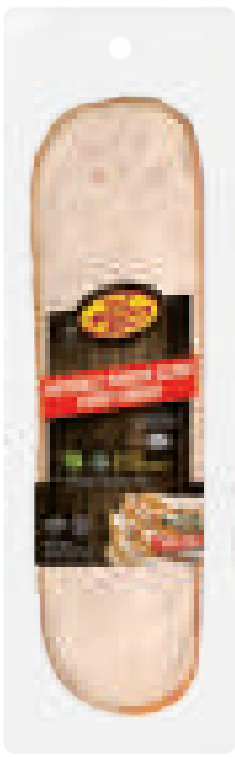
Item# 11420



Sliced Oven Roasted Turkey Breast
12/6 OZ.

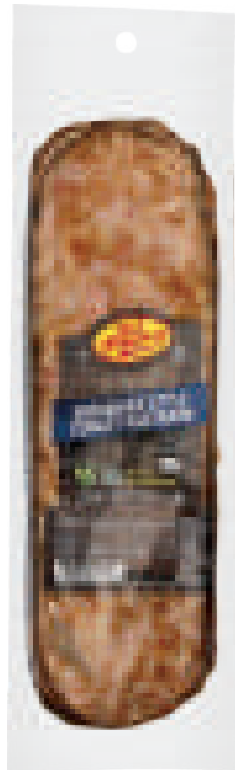
Item# 11400





Sliced Smoked Turkey Breast
12/6 OZ.

Item# 11403



Sliced Romanian Style Turkey Pastrami
12/6 OZ.

Item# 11419



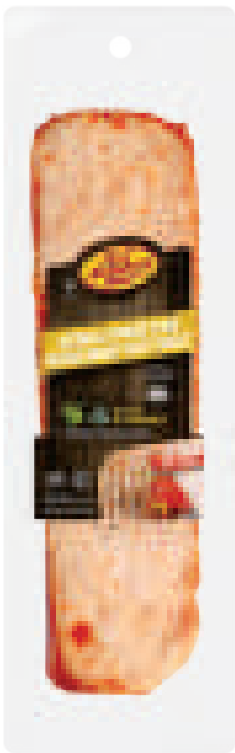
Sliced Beef Salami
12/6 OZ.

Item# 00431



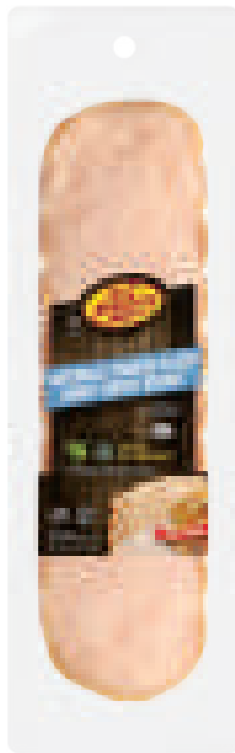
Sliced Beef Bologna
12/6 OZ.

Item# 00439



Sliced Mexican Brand Smoked Turkey Breast
12/6 OZ.

Item# 11446



Sliced Smoked Honey Turkey Breast
12/6 OZ.

Item# 11423



Sliced Pastrami
12/6 OZ.

Item# 00434



Cooked Corned Beef
12/6 OZ.

Item# 00437





Oven Roasted Turkey Croutons

12/6 OZ.

Item# 11447



Mini Beef Chulent Pastrami Chub

12/1 LB.

Item# 00401



Turkey Roll Chub

6/1 LB.

Item# 11406



Smoked Turkey Drumettes

6/1.25 LB.

Item# 11404



Smoked Chicken Pastrami Chub

6/1 LB.

Item# 11525



Beef Salami Chubs

12/12 OZ.

Item# 00287



Broiled Chicken Liver

12/8 OZ.

Item# 11253



Smoked Turkey Breast Chub

6/1 LB.

Item# 11503





FRANKS



Chicken Franks
12/12 OZ.

Item# 11410
8 947921100201 0



Chicken Franks
6/24 OZ.

Item# 11409
0 1402321159567 7



Chicken Franks
2/5 LB.

Item# 10418
8 947921100242 3



Beef Franks

12/12 OZ.

Item# 00436



Turkey Franks

12/12 OZ.

Item# 11413

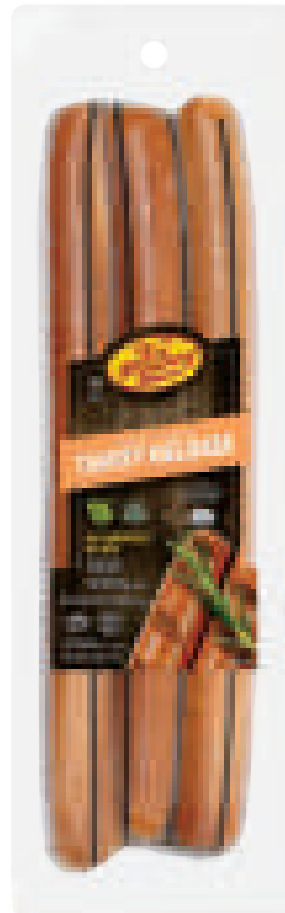


**MEGA
PACK
— 5 LB —**

**Beef
Franks**

2/5 L.B.

Item# 00435



**Smoked Turkey
Kielbasa**

12/16 OZ.

Item# 11414



**Cooked Beef
Kielbasa**

12/16 OZ.

Item# 00442



Chicken Cocktail Frank

12/12 OZ.

Item# 11412



EAT WELL ON THE GO...



Buy on
amazon



No Refrigeration
Necessary



Chicken Chulent
with Potato Kugel
and Kishka
12/12 OZ.

Item# 00491



Chicken Meat Balls
Served with Rice
& Mushrooms
12/12 OZ.

Item# 00494



Chicken Soup
with Matzoh Balls
12/12 OZ.

Item# 00495



Turkey Shwarma
Served with
Chick Peas
12/12 OZ.

Item# 00498



Chicken Chow Mein
Served with
Rice in Gravy
12/12 OZ.

Item# 00492



Bone-In Chicken
Served with
Carrot Tzimmes,
Potato Kugel & Ferfel
12/12 OZ.

Item# 00490



Stuffed Chicken
with Rice &
Mushrooms
12/12 OZ.

Item# 00496



Fillet of Salmon
with White Rice,
Carrots & Peppers
12/12 OZ.

Item# 00489





Beef Stuffed Cabbage
in Gravy
12/12 OZ.

Item# 00484



Beef Cholent
with Potato Kugel and Kishka
12/12 OZ.

Item# 00487



Beef Pepper Steak
Served with Rice in Gravy
12/12 OZ.

Item# 00485



Rib Steak
Served with Potato Kugel, Carrot Tzimmes & Farfel
12/12 OZ.

Item# 00488



Beef & Lamb Kabob
with Onions & Pimento
12/12 OZ.

Item# 00486



Beef Stuffed Cabbage
Served with Gravy
12/12 OZ.

Item# 00482



Kosher
for
Passover



Roast Chicken
with Carrots & Potatoes
12/12 OZ.

Item# 00483



Kosher
for
Passover



Chicken Soup
with Non-Gebrochts Matzoh Balls,
Chicken and Vegetables
12/12 OZ.

Item# 00497



Kosher
for
Passover



Beef Goulash
Rich Stew with Beef and Savory Vegetables
12/12 OZ.

Item# 00493



Kosher
for
Passover



FROZEN



Breaded Chicken Schnitzel

6/2 LB.

Item# 91270



Breaded Chicken Tenders

6/2 LB.

Item# 91275



Breaded Sesame Chicken Tenders

6/24 OZ.

Item# 91276



Breaded Chicken Cutlets

6/21 OZ.

Item# 91272





Breaded Chicken Fries
6/2 LB.

Item# 91479
8 94792110023117



Breaded Chicken Fries - Spicy
6/24 OZ.

Item# 91271
8 94792110027113



Chicken Kreplach
12/7 OZ.

Item# 00400
8 947921100299117



Buffalo Style Chicken Wings - Mild
6/2 LB.

Item# 91451
8 94792110024815



Buffalo Style Chicken Wings - Spicy
6/2 LB.

Item# 91452
8 94792110024912



Beef Patties - 4 Pc.
12/11 OZ.

Item# 00443
8 94792110022817



12 Cocktail Beef Franks 'n Blankets
12/6 OZ.

Item# 00280
8 94792110028015



Breaded Chicken Nuggets
6/2 LB.

Item# 91273
8 94792110021216



Alef Beis Breaded Chicken
6/2 LB.

Item# 91274
8 94792110021313



Beef Kishke
12/1 LB.

Item# 00453
8 94792110024116



BULK DELI



Sliced Cooked Oven Roasted Turkey Breast

APPROX. 2/7.5 LB.

Item# 15402



Sliced Smoked Turkey Breast

APPROX. 2/7.5 LB.

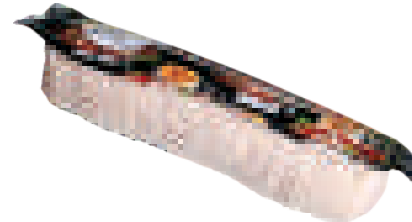
Item# 15403



Sliced Turkey Roll

APPROX. 2/7.5 LB.

Item# 15415



Sliced Smoked Flavor Turkey Breast

APPROX. 2/7.5 LB.

Item# 15417



Sliced Turkey Pastrami

APPROX. 2/7.5 LB.

Item# 15420



Sliced Smoked Chicken Salami

APPROX. 2/7.5 LB.

Item# 15424



Sliced Smoked Chicken Pastrami (w/Rub)

APPROX. 2/7.5 LB.

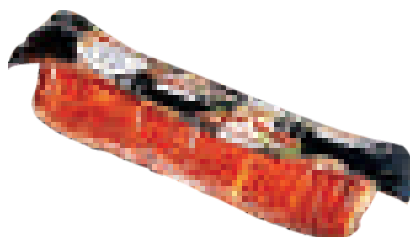
Item# 15425



Sliced Bologna

APPROX. 2/7.5 LB.

Item# 15426



Sliced Mexican Brand Turkey Breast

APPROX. 2/7.5 LB.

Item# 15446



Chicken Liver

APPROX. 2/5 LB.

Item# 10253



Turkey Roll
APPROX. 2/8 LB.
Item# 10415



Turkey Pastrami
APPROX. 2/8 LB.
Item# 10420



Smoked Flavored Turkey Breast
APPROX. 3/5.5 LB.
Item# 10417



Gourmet Smoked Turkey
APPROX. 3/5.5 LB.
Item# 10403



Honey Turkey
APPROX. 3/5.5 LB.
Item# 10423



Mexican Turkey
APPROX. 3/5.5 LB.
Item# 10446



Oven Roasted Cooked Turkey
APPROX. 3/5.5 LB.
Item# 10402



Beef Fry
APPROX. 3/8 LB.
Item# 00429



Turkey Pastrami with Rub
APPROX. 3/5 LB.
Item# 10421



Chicken Roll
APPROX. 2/8 LB.
Item# 10422



Chicken Salami
APPROX. 2/8 LB.
Item# 10424



Chicken Pastrami
APPROX. 3/3.5 LB.
Item# 10425



Pickled Chicken
APPROX. 3/3.5 LB.
Item# 10426



Cooked Corned Beef
APPROX. 4/5 LB.
Item# 00273



Shoulder Pastrami
APPROX. 3/6 LB.
Item# 00433



Chuck Pastrami
APPROX. 3/6 LB.
Item# 00447



Salami
APPROX. 2/6 LB.
Item# 00430



Bologna
APPROX. 2/6 LB.
Item# 00438



Long Salami
APPROX. 4/4 LB.
Item# 00449



BULK FROZEN



Stuffed Cabbage

APPROX. 2/40 PCS.

Item# 00276



Mini Stuffed Cabbage

APPROX. 3/50 PCS.

Item# 00277



Breaded Chicken Tenders

20 LB. BOX

Item# 90275



Breaded Sesame Chicken Tenders

20 LB. BOX

Item# 90276



Breaded Chicken Nuggets

20 LB. BOX

Item# 90277



Franks 'n Blankets

288 PCS. - APPROX. 9 LB.

Item# 04477



Beef Patties

80 PCS. - APPROX. 19-23 LB.

Item# 04450



Chicken Kreplach

APPROX. 10 LB.

Item# 00409



Kishke

APPROX. 8/4 LB.

Item# 00279



Chicken Legs
12 TRAYS PER BOX
Item# 00541



Chicken Cutlets
12 TRAYS PER BOX
Item# 00503



Chicken Bones
12 TRAYS PER BOX
Item# 00521



Chicken Wings
12 TRAYS PER BOX
Item# 00565



Whole Chicken Cut in 4
12 TRAYS PER BOX
Item# 00570



Whole Chicken Cut in 8
12 TRAYS PER BOX
Item# 00583



4 Legs in Pouch
12 POUCHES PER BOX
Item# 05248



BULK CHICKEN



Boneless Skinless Breast Fresh

APPROX. 55 LB.

Item# 00203



Chicken Bones

APPROX. 45LB.

Item# 00221



Chicken Legs

APPROX. 55 LB.

Item# 00241



Chicken Thighs

APPROX. 55 LB.

Item# 00263



Chicken Wings

APPROX. 50LB.

Item# 00265



Chicken Gizzards

APPROX. 45 LB.

Item# 00237



Chicken Necks

APPROX. 40 LB.

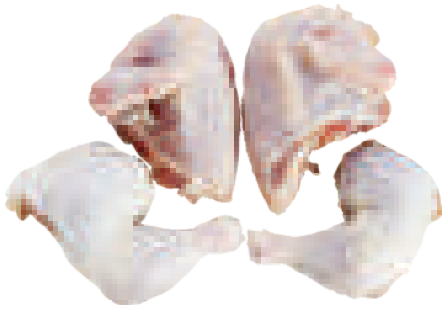
Item# 00254



Whole Chicken

APPROX. 50 LB.

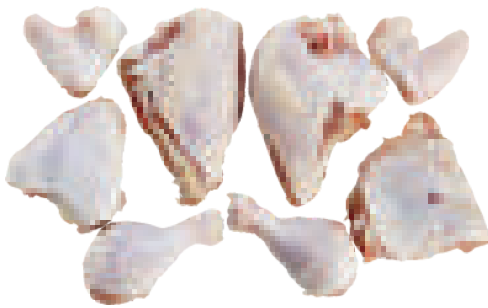
Item# 00311



Whole Chicken Cut in 4

APPROX. 55 LB.

Item# 00270



Whole Chicken Cut in 8

APPROX. 55 LB.

Item# 00282



Boneless Chicken Legs (Dark)

APPROX. 45 LB.

Item# 00249



Boneless Chicken Legs (Dark) with skin

APPROX. 45 LB.

Item# 00250



Turkey Boneless Thighs Skinless

APPROX. 50 LB.

Item# 00318



Turkey Drums

APPROX. 50 LB.

Item# 00323



Turkey Bones

APPROX. 30 LB.

Item# 00322



Turkey Wings

APPROX. 50 LB.

Item# 00335



Whole Duck

6 IN A BOX

Item# 00375

PASSOVER



Turkey Roll
APPROX. 2/8 LB.
Item# 10615



Oven Roasted Cooked Turkey
APPROX. 3/5.5 LB.
Item# 10602



Turkey Pastrami
APPROX. 2/8 LB.
Item# 10620



Chicken Pastrami
APPROX. 3/3.5 LB.
Item# 10625



Chuck Pastrami
APPROX. 3/6 LB.
Item# 00647



Chicken Liver
APPROX. 2/5 LB.
Item# 10653



Broiled Chicken Liver
12/8 OZ.
Item# 11653
0 40232 159579 0



Beef Stuffed Cabbage
Served with Gravy
12/12 OZ.

Item# 00482



Roast Chicken
with Carrots & Potatoes
12/12 OZ.

Item# 00483



Beef Goulash
Rich Stew with Beef
and Savory Vegetables
12/12 OZ.

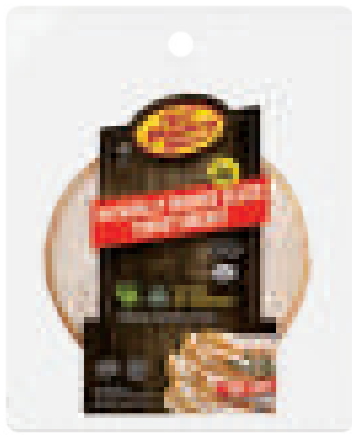
Item# 00493



Chicken Soup
with Non-Gebrochts Matzoh Balls,
Chicken and Vegetables
12/12 OZ.

Item# 00497





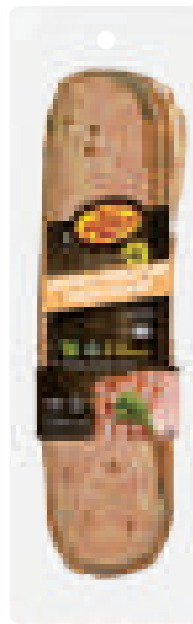
Gourmet Smoked Turkey Breast
12/6 OZ.

Item# 11603



Sliced Turkey Roll
12/6 OZ.

Item# 11615



Chicken Pastrami
12/6 OZ.

Item# 11625



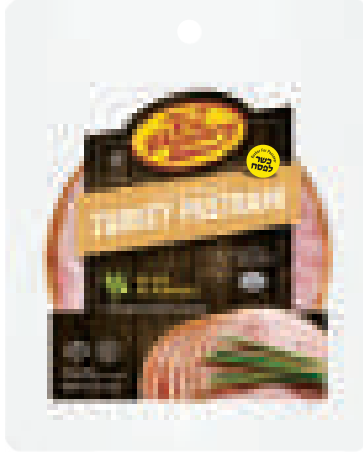
Sliced Mexican Brand Smoked Turkey Breast
12/6 OZ.

Item# 11646



Sliced Smoked Flavor Turkey Breast
12/6 OZ.

Item# 11617



Sliced Smoked Turkey Pastrami
12/6 OZ.

Item# 11620



Sliced Pastrami
12/6 OZ.

Item# 11634



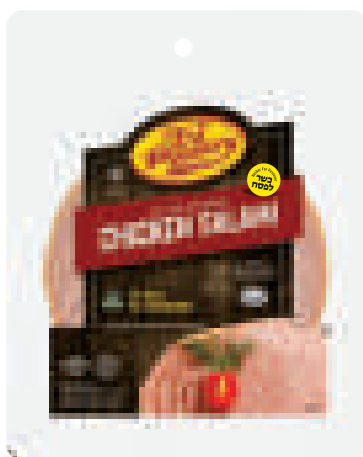
Cooked Corned Beef
12/6 OZ.

Item# 11637



Sliced Oven Roasted Chicken Roll
12/6 OZ.

Item# 11622



Sliced Smoked Chicken Salami
12/6 OZ.

Item# 11624



Chicken Franks
12/12 OZ.


Item# 11610



Beef Franks
12/12 OZ.

Item# 11636





**KASHIRUS.
QUALITY.
TASTIE.**



For wholesale: 845.783.8085
info@kjppoultry.com



| ITEM | DESCRIPTION | COUNT | PRICE | UPC | QTY |
|------|-------------|-------|-------|-----|-----|
|------|-------------|-------|-------|-----|-----|

SLICED DELI

| | | | | | |
|-------|--|---------|--|--------------|--|
| 00431 | SLICED BEEF SALAMI | 12/6 OZ | | 894792002157 | |
| 00434 | SLICED PASTRAMI | 12/6 OZ | | 894792002171 | |
| 00437 | COOKED CORNED BEEF | 12/6 OZ | | 894792002188 | |
| 00439 | SLICED BEEF BOLOGNA | 12/6 OZ | | 894792002164 | |
| 11400 | SLICED OVEN ROASTED TURKEY BREAST | 12/6 OZ | | 040232595615 | |
| 11403 | SLICED SMOKED TURKEY BREAST - LONG | 12/6 OZ | | 894792002959 | |
| 11405 | SLICED HOME STYLE TURKEY ROLL - FAMILY PACK | 6/16 OZ | | 040232595684 | |
| 11411 | SLICED SMOKED CHICKEN BREAST | 12/6 OZ | | 040232595660 | |
| 11415 | SLICED TURKEY ROLL | 12/6 OZ | | 894792002058 | |
| 11417 | SLICED SMOKED FLAVOR TURKEY BREAST | 12/6 OZ | | 894792002034 | |
| 11419 | SLICED ROMANIAN TURKEY PASTRAMI - LONG | 12/6 OZ | | 894792002898 | |
| 11420 | SLICED SMOKED TURKEY PASTRAMI | 12/6 OZ | | 894792002041 | |
| 11422 | SLICED OVEN ROASTED CHICKEN ROLL | 12/6 OZ | | 894792002119 | |
| 11423 | SLICED SMOKED HONEY TURKEY BREAST - LONG | 12/6 OZ | | 894792002966 | |
| 11424 | SLICED SMOKED CHICKEN SALAMI | 12/6 OZ | | 040232595622 | |
| 11446 | SMOKED SLICED MEXICAN BRAND TURKEY BREAST - LONG | 12/6 OZ | | 894792002096 | |

CHUBS

| | | | | | |
|-------|---------------------------------|----------|--|--------------|--|
| 00287 | BEEF SALAMI CHUB | 12/12 OZ | | 894792002874 | |
| 00401 | MINI BEEF CHULENT PASTRAMI CHUB | 12/1 LB | | 894792002706 | |
| 11406 | TURKEY ROLL - CHUB | 6/1 LB | | 894792002676 | |
| 11503 | SMOKED TURKEY BREAST CHUB | 6/1 LB | | 040232595608 | |
| 11525 | CHICKEN PASTRAMI CHUB | 6/1 LB | | 040232595639 | |

FRANKS

| | | | | | |
|-------|------------------------|----------|--|--------------|--|
| 00435 | BEEF FRANKS | 2/5 LB | | 894792002201 | |
| 00436 | BEEF FRANK | 12/12 OZ | | 894792002195 | |
| 00442 | COOKED BEEF KIELBASA | 12/16 OZ | | 894792002270 | |
| 10418 | CHICKEN FRANKS | 2/5 LB | | 894792002423 | |
| 11409 | CHICKEN FRANKS | 6/24 OZ | | 040232595677 | |
| 11410 | CHICKEN FRANKS | 12/12 OZ | | 894792002010 | |
| 11413 | TURKEY FRANKS | 12/12 OZ | | 894792002089 | |
| 11412 | CHICKEN COCKTAIL FRANK | 12/12 OZ | | 040232595691 | |
| 11414 | SMOKED TURKEY KIELBASA | 12/16 OZ | | 040232595752 | |

READY MEALS

| | | | | | |
|-------|----------------------|----------|--|--------------|--|
| 00484 | BEEF STUFFED CABBAGE | 12/12 OZ | | 894792002355 | |
| 00485 | BEEF PEPPER STEAK | 12/12 OZ | | 894792002331 | |
| 00486 | BEEF & LAMB KABOB | 12/12 OZ | | 894792002348 | |
| 00487 | BEEF CHULENT | 12/12 OZ | | 894792002362 | |
| 00488 | RIB STEAK | 12/12 OZ | | 894792002324 | |
| 00489 | FILLET OF SALMON | 12/12 OZ | | 894792002553 | |
| 00490 | BONE IN CHICKEN | 12/12 OZ | | 894792002232 | |
| 00491 | CHICKEN CHULENT | 12/12 OZ | | 894792002683 | |
| 00492 | CHICKEN CHOW MEIN | 12/12 OZ | | 894792002300 | |
| 00494 | CHICKEN MEAT BALLS | 12/12 OZ | | 894792002263 | |
| 00495 | CHICKEN SOUP | 12/12 OZ | | 894792002102 | |
| 00496 | STUFFED CHICKEN | 12/12 OZ | | 894792002294 | |
| 00498 | TURKEY SHWARMA | 12/12 OZ | | 894792002256 | |

SPECIALTY

| | | | | | |
|-------|------------------------------|-----------|--|--------------|--|
| 11253 | BROILED CHICKEN LIVER | 12/8 OZ | | 094792002133 | |
| 11404 | SMOKED TURKEY DRUMETTES | 6/1.25 LB | | 894792002669 | |
| 11447 | OVEN ROASTED TURKEY CROUTONS | 12/6 OZ | | 894792002386 | |

| ITEM | DESCRIPTION | COUNT | PRICE | UPC | QTY |
|---------------|-------------------------------------|----------|-------|--------------|-----|
| FROZEN | | | | | |
| 00280 | 12 COCKTAIL BEEF FRANKS 'N BLANKETS | 12/6 OZ | | 894792002805 | |
| 00400 | CHICKEN KREPLACH | 12/6 OZ | | 894792002997 | |
| 00443 | BEEF PATTIES 4 PC | 12/11 OZ | | 894792002287 | |
| 00453 | BEEF KISHKE | 12/1 LB | | 894792002416 | |
| 91270 | BREADED CHICKEN SHNITZEL | 6/2 LB | | 894792002904 | |
| 91271 | BREADED CHICKEN FRIES SPICY | 6/24 OZ | | 894792002713 | |
| 91272 | BREADED CHICKEN CUTLETS | 6/21 OZ | | 894792002720 | |
| 91273 | BREADED CHICKEN NUGGETS | 6/2 LB | | 894792002126 | |
| 91274 | ALEF BEIS CHICKEN | 6/2 LB | | 894792002133 | |
| 91275 | BREADED CHICKEN TENDERS | 6/2 LB | | 894792002140 | |
| 91276 | BREADED SESAME CHICKEN TENDERS | 6/2 LB | | 894792002546 | |
| 91451 | BUFFALO STYLE CHICKEN WINGS - MILD | 6/2 LB | | 894792002485 | |
| 91452 | BUFFALO STYLE CHICKEN WINGS - SPICY | 6/2 LB | | 894792002492 | |
| 91479 | BREADED CHICKEN FRIES | 6/2 LB | | 894792002317 | |

BULK FROZEN

| | | | | | |
|-------|---|-------------------|--|--|--|
| 00276 | STUFFED CABBAGE | 2/40 PCS | | | |
| 00277 | MINI STUFFED CABBAGE | 3/50 PCS | | | |
| 00279 | KISHKE | 8/4 LB | | | |
| 00409 | CHICKEN KREPLACH | 10 LB - BOX | | | |
| 04450 | BEEF PATTIES | 80 PCS - 19-23 LB | | | |
| 04477 | FRANKS 'N BLANKETS | 288 PCS - 9 LB | | | |
| 90269 | BREADED CHICKEN SCHNITZEL | 20 LB - BOX | | | |
| 90271 | BREADED CHICKEN FRIES - SPICY | 20 LB - BOX | | | |
| 90272 | BREADED CHICKEN CUTLETS | 20 LB - BOX | | | |
| 90275 | BREADED CHICKEN TENDERS | 20 LB - BOX | | | |
| 90276 | BREADED SESAME CHICKEN TENDERS | 20 LB - BOX | | | |
| 90277 | BREADED CHICKEN NUGGETS | 20 LB - BOX | | | |
| 90278 | BREADED CHICKEN BREAST BITES | 20 LB - BOX | | | |
| 90300 | COOKED CHICKEN PATTIES | 20 LB - BOX | | | |
| 90451 | BUFFALO STYLE CHICKEN WINGS - MILD | 20 LB - BOX | | | |
| 90452 | BUFFALO STYLE CHICKEN WINGS - HOT & SPICY | 20 LB - BOX | | | |
| 90460 | GRILLED CHICKEN BREASTS | 20 LB - BOX | | | |
| 90479 | BREADED CHICKEN FRIES | 20 LB - BOX | | | |

BULK DELI

| | | | | | |
|-------|--|----------|--|--|--|
| 00273 | COOKED CORNED BEEF | 4/5 LB | | | |
| 00429 | BEEF FRY | 3/8 LB | | | |
| 00430 | SALAMI | 2/6 LB | | | |
| 00438 | BOLOGNA | 2/6 LB | | | |
| 00443 | SHOULDER PASTRAMI | 3/6 LB | | | |
| 00447 | CHUCK PASTRAMI | 3/6 LB | | | |
| 00449 | LONG SALAMI | 4/4 LB | | | |
| 10402 | OVEN ROASTED COOKED TURKEY | 3/5.5 LB | | | |
| 10403 | GOURMET SMOKED TURKEY | 3/5.5 LB | | | |
| 10415 | TURKEY ROLL | 2/8 LB | | | |
| 10417 | SMOKED FLAVORED TURKEY BREAST | 3/5.5 LB | | | |
| 10420 | TURKEY PASTRAMI | 2/8 LB | | | |
| 10421 | TURKEY PASTRAMI WITH RUB | 3/5 LB | | | |
| 10422 | CHICKEN ROLL | 2/8 LB | | | |
| 10423 | HONEY TURKEY | 3/5.5 LB | | | |
| 10424 | CHICKEN SALAMI | 2/8 LB | | | |
| 10425 | CHICKEN PASTRAMI | 3/5.5 LB | | | |
| 10426 | PICKLED CHICKEN | 3/5.5 LB | | | |
| 10446 | MEXICAN TURKEY | 3/5.5 LB | | | |
| 10253 | CHICKEN LIVER | 2/5 LB | | | |
| 15402 | SLICED COOKED OVEN ROASTED TURKEY BREAST | 2/7.5 LB | | | |
| 15403 | SLICED SMOKED TURKEY BREAST | 2/7.5 LB | | | |
| 15415 | SLICED TURKEY ROLL | 2/7.5 LB | | | |
| 15417 | SLICED SMOKED FLAVOR TURKEY BREAST | 2/7.5 LB | | | |
| 15420 | SLICED TURKEY PASTRAMI | 2/7.5 LB | | | |
| 15424 | SLICED SMOKED CHICKEN SALAMI | 2/7.5 LB | | | |
| 15425 | SLICED SMOKED CHICKEN PASTRAMI W/RUB | 2/7.5 LB | | | |
| 15426 | SLICED BOLOGNA | 2/7.5 LB | | | |
| 15446 | SLICED MEXICAN BRAND TURKEY BREAST | 2/7.5 LB | | | |

TRAY PACK

| | | | | | |
|-------|-----------------|------------------|--|--|--|
| 05030 | CHICKEN CUTLETS | 12 TRAYS PER BOX | | | |
| 05210 | CHICKEN BONES | 12 TRAYS PER BOX | | | |



For wholesale:
845.783.8085
info@kjppoultry.com

| ITEM | DESCRIPTION | COUNT | PRICE | UPC | QTY |
|-------|------------------------|------------------|-------|-----|-----|
| 05248 | 4 LEGS IN POUCH | 12 TRAYS PER BOX | | | |
| 05410 | CHICKEN LEGS | 12 TRAYS PER BOX | | | |
| 05650 | CHICKEN WINGS | 12 TRAYS PER BOX | | | |
| 05700 | WHOLE CHICKEN CUT IN 4 | 12 TRAYS PER BOX | | | |
| 05830 | WHOLE CHICKEN CUT IN 8 | 12 TRAYS PER BOX | | | |

BULK POULTRY

| | | | | | |
|-------|--|------------|--|--|--|
| 00203 | BONELESS SKINLESS BREAST FRESH | 55 LB | | | |
| 00221 | CHICKEN BONES | 45 LB | | | |
| 00237 | CHICKEN GIZZARDS | 45 LB | | | |
| 00241 | CHICKEN LEGS | 55 LB | | | |
| 00249 | BONELESS CHICKEN LEGS (DARK) | 45 LB | | | |
| 00250 | BONELESS CHICKEN LEGS (DARK) WITH SKIN | 45 LB | | | |
| 00254 | CHICKEN NECKS | 40 LB | | | |
| 00263 | CHICKEN THIGHS | 55 LB | | | |
| 00265 | CHICKEN WINGS | 50 LB | | | |
| 00270 | WHOLE CHICKEN CUT IN 4 | 55 LB | | | |
| 00282 | WHOLE CHICKEN CUT IN 8 | 55 LB | | | |
| 00311 | WHOLE CHICKEN | 60 LB | | | |
| 00318 | TURKEY BONELESS THIGHS SKINLESS | 50 LB | | | |
| 00322 | TURKEY BONES | 30 LB | | | |
| 00323 | TURKEY DRUMS | 50 LB | | | |
| 00335 | TURKEY WINGS | 50 LB | | | |
| 00375 | WHOLE DUCK | 6 IN A BOX | | | |

MEGA PACK

| | | | | | |
|-------|--------------------------------|------------|--|--|--|
| 16410 | CHICKEN FRANKS | 50/12 OZ | | | |
| 16412 | TURKEY FRANKS | 50/12 OZ | | | |
| 16414 | HUNGARIAN FRANKS | 50/12 OZ | | | |
| 16416 | COCKTAIL FRANKS | 50/12 OZ | | | |
| 16426 | SLICED CHICKEN BOLOGNA | 30/12 OZ | | | |
| 16441 | SMOKED CLASSIC TURKEY PASTRAMI | 50/12 OZ | | | |
| 16444 | SLICED SMOKED CHICKEN SALAMI | 27/16 OZ | | | |
| 16664 | SMOKED CHICKEN SALAMI | 30/12 OZ | | | |
| 92277 | BREADED CHICKEN NUGGETS | 24/16 OZ | | | |
| 92283 | BREADED CHICKEN CUTLETS | 16 OZ/4 PC | | | |
| 92304 | COOKED CHICKEN PATTIES | 24/16 OZ | | | |
| 93312 | CHICKEN FUN SHAPE | 25/16 OZ | | | |
| 92459 | MILD CHICKEN WINGS | 26/16 OZ | | | |
| 92479 | CHICKEN FRIES | 25/16 OZ | | | |

PASSOVER

| ITEM | DESCRIPTION | COUNT | PRICE | UPC | QTY |
|-------------|-------------------------------------|-----------|-------|--------------|-----|
| DELI | | | | | |
| 11603 | SLICED GOURMET SMOKED TURKEY BREAST | 12-6 oz. | | 040232187384 | |
| 11610 | CHICKEN FRANKS | 12/12 oz. | | 040232187414 | |
| 11615 | SLICED TURKEY ROLL | 12-6 oz. | | 040232187377 | |
| 11617 | SLICED SMOKED FLAVOR TURKEY BREAST | 12-6 oz. | | 040232187339 | |
| 11620 | SLICED TURKEY PASTRAMI | 12-6 oz. | | 040232187421 | |
| 11622 | SLICED CHICKEN ROLL | 12-6 oz. | | 040232187407 | |
| 11624 | SLICED CHICKEN SALAMI | 12-6 oz. | | 040232187391 | |
| 11625 | SLICED CHICKEN PASTRAMI (WITH RUB) | 12-6 oz. | | 040232187346 | |
| 11634 | SLICED BEEF PASTRAMI | 12-6 oz. | | 040232337284 | |
| 11636 | BEEF FRANKS | 12-12 oz. | | 040232337291 | |
| 11637 | SLICED COOKED CORNED BEEF | 12-6 oz. | | 040232337327 | |
| 11646 | SLICED MEXICAN TURKEY BREAST | 12-6 oz. | | 040232187353 | |
| 11653 | BROILED CHICKEN LIVER | 12-8 oz. | | 040232595790 | |

BULK DELI

| | | | | | |
|-------|-----------------------------------|--------|--|--------------|--|
| 00647 | CHUCK PASTRAMI | 3/ BOX | | | |
| 10602 | COOKED OVEN ROASTED TURKEY BREAST | 3/ BOX | | | |
| 10615 | TURKEY ROLL | 2/ BOX | | | |
| 10620 | TURKEY PASTRAMI (NO RUB) | 2/ BOX | | | |
| 10625 | CHICKEN PASTRAMI (WITH RUB) | 3/ BOX | | | |
| 10653 | BROILED CHICKEN LIVER 5 LB | 2/ BOX | | 040232187360 | |

READY MEALS

| | | | | | |
|-------|----------------------|----------|--|--------------|--|
| 00482 | BEEF STUFFED CABBAGE | 12/12 OZ | | 894792002591 | |
| 00483 | ROAST CHICKEN | 12/12 OZ | | 894792002607 | |
| 00493 | BEEF GOULASH | 12/12 OZ | | 894792002928 | |
| 00497 | CHICKEN SOUP | 12/12 OZ | | 894792002911 | |

ITEM LIST



KJ Poultry Processing Plant Inc.
7 Dinev Ct, Monroe, NY 10950
www.kjpoultry.com

For wholesale call:
845.783.8085

