



# PRINCE WILLIAM

---

## COUNTY

# COMMUNITY SAFETY INITIATIVE



# Agenda

1

## Safe and Secure Community

*Strategic Vision and Goal*

2

## Community Safety Initiative Framework

*What is CSI, the approach and potential implementation steps*

3

## Community Safety Initiative in PWC

*Potential CSI structure in PWC*

4

## Community Safety Initiative PWC Projects

*What CSI looks like in PWC*



# 2021-2024 STRATEGIC PLAN

*A Community of Choice*

## VISION

PRINCE WILLIAM COUNTY IS A DIVERSE COMMUNITY STRIVING TO BE HEALTHY, **SAFE** AND **CARING** WITH A THRIVING ECONOMY AND A PROTECTED NATURAL ENVIRONMENT.



### ACCOUNTABILITY

To strive to achieve outcomes that align with community vision and goals, and to evaluate and publicly share progress on a periodic basis.



### COMMUNICATION & ENGAGEMENT

To inform and engage residents to encourage collaboration on projects, policies, and progress in a timely manner.



### EQUITY & INCLUSION

To eliminate barriers to fair treatment, access, opportunity, and advancement for all residents.



### INNOVATION

To strive for excellence by exploring new and creative ways to solve problems and serve the community.



### INTEGRITY

To behave at all times in a manner that is ethical and professional with the highest degree of honesty, respect, and fairness.

# SAFE & SECURE COMMUNITY

## Goal Statement:

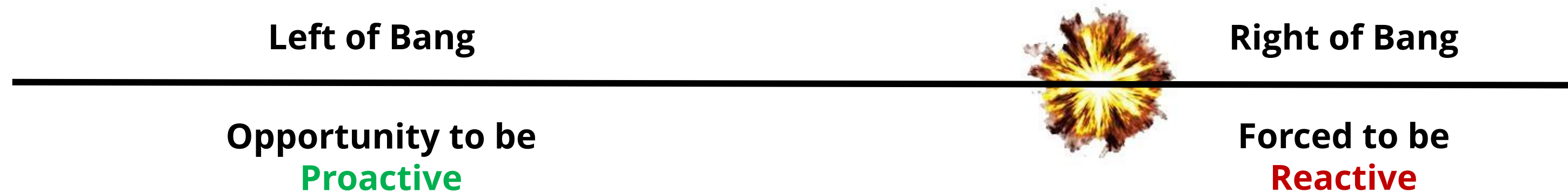
Provide a safe and secure community through prevention, readiness and service excellence.

## Goal Description:

Prince William County residents desire to live in a **safe** community where they **feel secure** in knowing they will be **protected from harm, treated equitably, and provided resources** that will assist them in continuing to thrive. Prince William County considers the **safety and security of its residents a top priority** and is **forward thinking** in meeting the challenges of this goal. Ensuring a safe and secure community entails **regular community engagement** with law enforcement and criminal justice services agencies; **great collaboration** between law enforcement and a cross section of **multiple stakeholders** in order to enhance prevention, treatment and services; actively recruiting, hiring and retaining highly qualified and diverse public safety personnel reflective of the community they serve; ensuring public safety personnel are equipped with the most up to date and cutting edge tools and technology; and making certain emergency operations planning is regularly updated and communicated to the public. **Building a positive rapport, establishing an environment where everyone feels heard, strengthening relationships and collaboration between public safety agencies, county stakeholders and county residents are the building blocks to a safer community.**

# Toward a "Left of Bang" Orientation

- The "Left of Bang" concept was developed by the US Marine Corps and reflects activities before a critical incident (a bang) occurs. "Bang" represents a central event (crash, attack, etc.) on a timeline. "Right of Bang" describes reactions to an event that has already occurred.
- Left of bang strategies focus on **prevention** and avoiding danger. Right of bang reactions focus on **handling the damage**.
- Our current approach to community safety is predominantly right of bang oriented, with a focus on post-incident activities in the formal criminal justice system.
- Staff is recommending a left of bang approach to put more resources and efforts towards proactive actions so that there is less of a need to be reactive.



# Community Safety Initiative

*Prince William County will establish a Community Safety Initiative (CSI) that is holistic, evidence-informed, equitable, and inclusive, using data and active community engagement to determine strategic priorities and focused action plans.*



# Community Safety Initiative Approach

1

## **MULTI-SECTOR STAKEHOLDERS**

*Public, private and community stakeholders building authentic relationships to enhance safety, strengthen community resilience and build social capital.*

2

## **TRUSTED MESSENGERS & PRACTITIONERS**

*Trusted, credible messengers and practitioners to deliver key intervention elements.*

3

## **DRIVEN BY DATA**

*Data and research to support decision-making to effectively address the target factors that impact community safety.*

4

## **TRAUMA INFORMED**

*Practices that are culturally competent and responsive to the impact of trauma on individuals and the broader population.*



# CSI Strategy Implementation Steps

## 1 BUILD COMMUNITY COLLABORATION

- *Create a PWC Community Safety Advisory Committee comprised of representatives from public safety, Criminal Justice Services, schools, Community Services, Social Services, public health, housing, faith-based organizations, nonprofits, community-based organizations, businesses and other stakeholders.*

## 2 ENGAGE AND ASSESS

- *Actively engage residents and stakeholders to understand their perspectives on, and insights into, safety in the community and form trusting relationships that ensure equal and active roles throughout the CSI process.*
- *Compile data and perform an in-depth community assessments that identify the root causes of safety problems, assets that can support the CSI strategies, and gaps/needs to be addressed.*

## 3 PLAN & IMPLEMENT

- *Based on the results of the assessment, determine strategic priorities that are customized and focused to community needs.*
- *Create a roadmap and action plan that provide a framework for role accountability, timelines, monitoring and evaluation.*
- *Implement a Community Safety Plan that incorporates community-based intervention and prevention approaches that foster opportunities for positive change.*





# CSI Strategy Implementation Steps (cont'd)

4

## ENSURE SUCCESS

- Continue to actively engage the community and seek frequent feedback using multiple communication channels.
- Focus on authentic engagement, ensuring all community groups are represented and heard.
- Develop a continuous quality improvement plan to ensure input is incorporated into the strategy.
- Ensure approaches are holistic.

5

## MEASURE SUCCESS

- Identify and track performance measures; collect and analyze data on the outcomes.
- Create an evaluation plan that incorporates process and outcome measures; incorporate equity and inclusion into the evaluation plan.

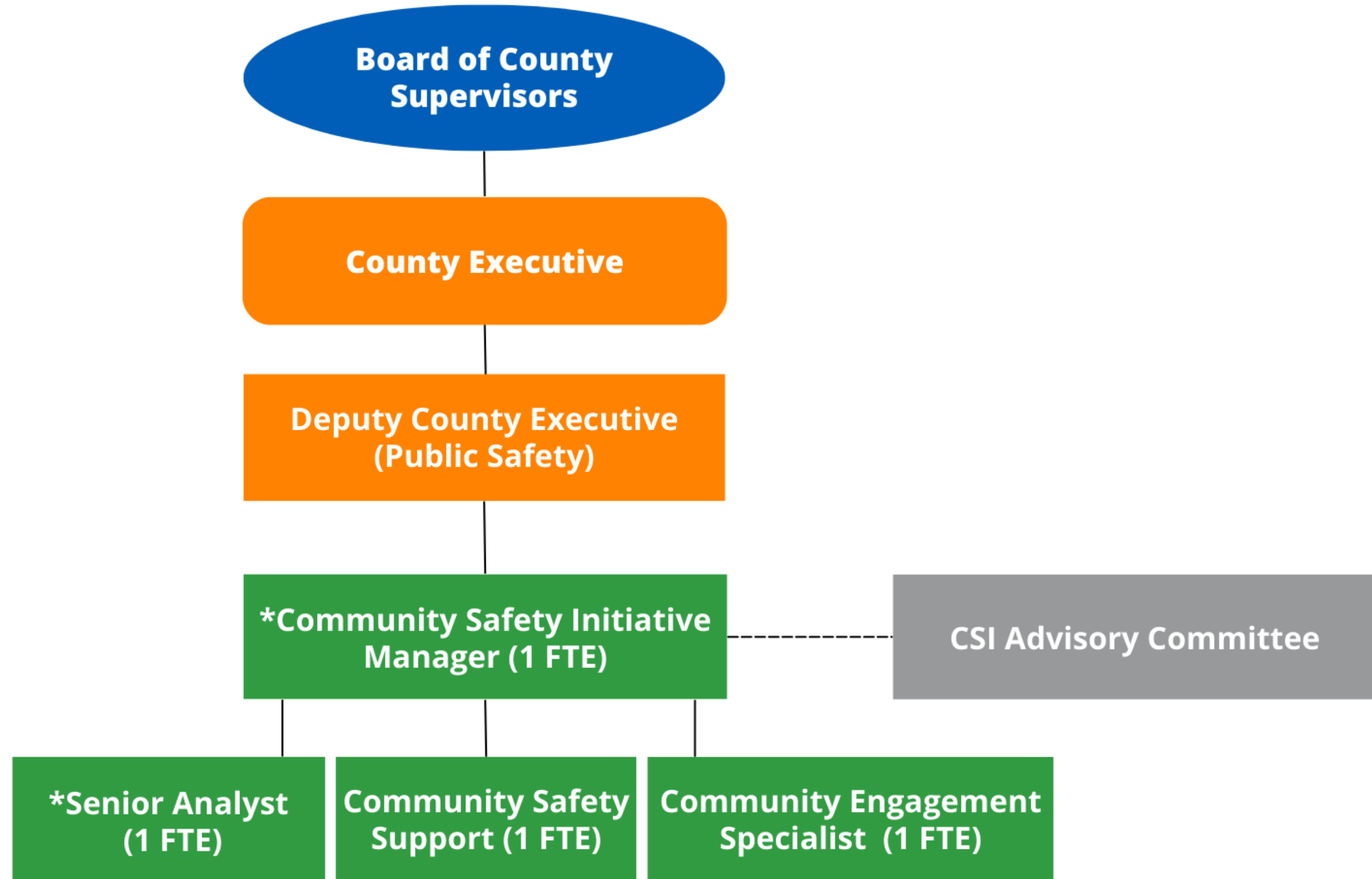
6

## CREATE SUSTAINABILITY

- Implement a sustainability process, to include building relationships with stakeholders from all sectors and identifying CSI champions to gain and sustain community buy in, support and resources.
- Use performance measures, evaluation findings, storytelling and culturally literate messaging to demonstrate CSI value.
- Continuously learn and leverage other communities' experiences and efforts.

# What Could CSI Look Like in PWC?

## Community Safety Initiative Structure



# What Could CSI Look Like in PWC?

## Community Safety Initiative Advisory Committee

- *Focus: Primarily proactive measures to improve safety, to include prevention, intervention and education.*
- *No more than 20 members*
- *Managed by the Community Safety Initiative Manager*
- *Comprised of a comprehensive group of representatives from appropriate governmental agencies and members of the community*
- *Group will define the shared goal and vision, as well as the roles and responsibilities of each partner*
- *Group will evaluate outcomes and provide reports as needed and on a regular basis, to include agency reporting and accountability*

# What Could CSI Look Like in PWC?

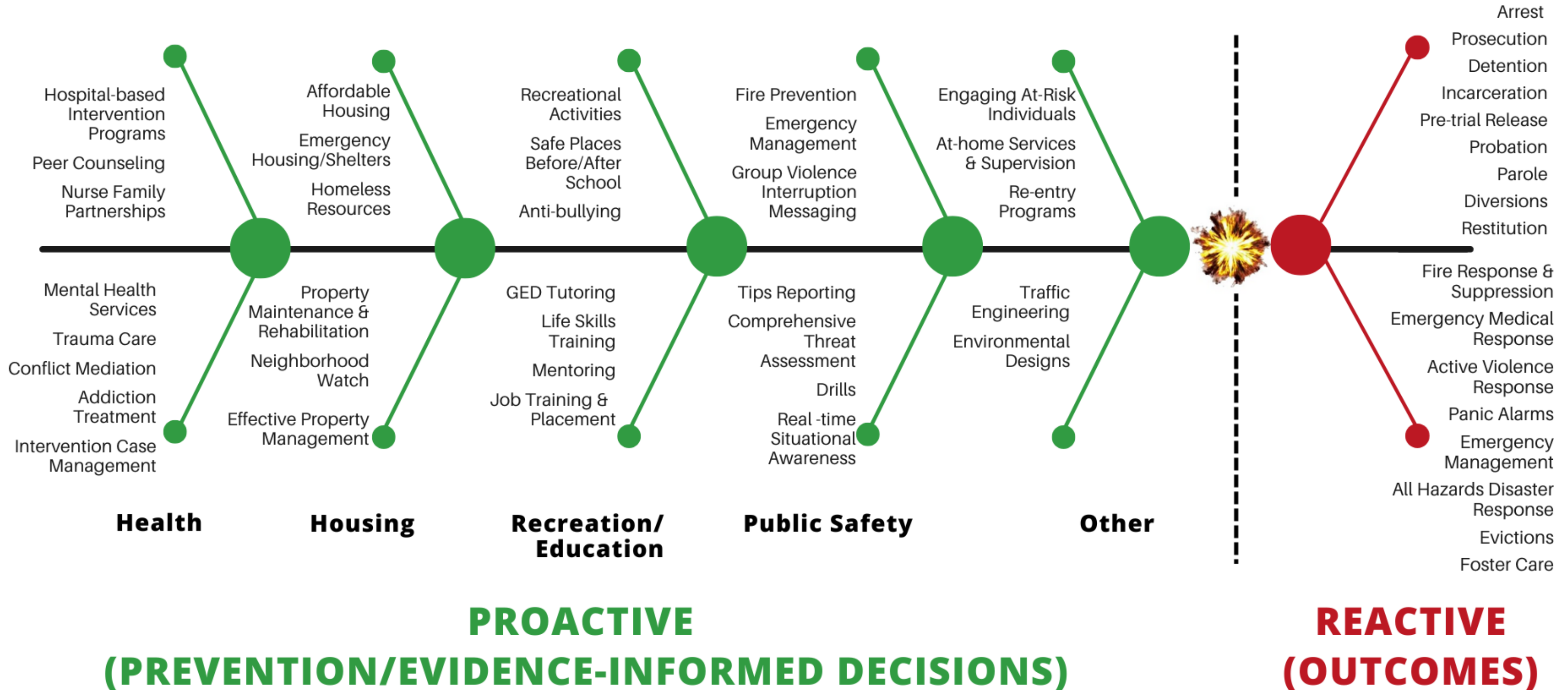
## Community Safety Initiative Advisory Committee, cont.

- Potential Areas of Focus (Work Groups):
  - Community Violence Intervention
  - Traffic Safety
  - Active Violence Prevention and Response
  - Panhandling
  - Substance Misuse
  - Human Trafficking
  - Other Areas of Community Safety



# PWC Community Safety Initiative

\*The areas listed below are for example and do not represent an all-inclusive list.



# Example #1: Community Violence Intervention (CVI)

*Community Violence is generally defined as intentional acts committed between unrelated individuals, who may or may not know each other, generally outside the home. Examples include assaults or fights among groups and shootings in public places.*

# CSI Example #1: CVI Action Plan

Our CSI strategy (*Collaborate, Engage and Assess, Plan & Implement, Ensure Success, Measure Success and Create Sustainability*) would apply to our CVI approach with the support of our CSI Advisory Committee.

Concurrent with the CSI strategy, we would continue an evidence-informed CVI action plan to ensure community safety, which could include the following:

1

## **High-Risk Individuals**

*Use police data and community knowledge to identify individuals who have a high likelihood for involvement with violence.*

2

## **Violence Interruption**

*Develop credible messengers and interventionists to identify potential disputes, assess needs and broker for services to address unmet needs.*

# CSI Example #1: CVI Action Plan (cont'd)

3

## **Multi-Sector Services**

*Employ various services to include hospital-based CVI, supervision, education, employment, mental health, recreational programs and mentoring.*

4

## **Environmental Design**

*Apply Crime Prevention through Environmental Design principles to clean up and rehab properties to reduce criminal activity.*

5

## **Strategic Accountability**

*Ensure close supervision or monitoring of certain at-risk individuals by co-responder teams. Employ hot spot patrols, home visits, and prosecutorial involvement.*



# Next Steps

## **Establish 2 positions**

- *CSI Program Manager*
- *Senior Analyst*

## **Begin Gathering Data**

- *Commence evidence-informed community assessment*
- *Engage community regarding community safety priorities*

## **Establish Community Safety Advisory Committee**

## **Establish CSI Program in FY24 Budget**