

THE MONTHLY FEED-SEPTEMBER 2024

jamie.nicholson@lincoln.k12.or.us
sara.gibson@lincoln.k12.or.us
patty.graves@lincoln.k12.or.us

NUTRITION SERVICES

Lincoln County School District
School Meals Gardens Food Pantry



Meet our school teams!



Waldport
High/Middle
School



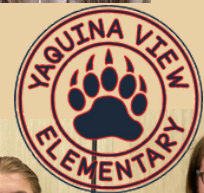
Toledo
Elementary
School



Sam Case
Elementary
School



Newport
Middle School

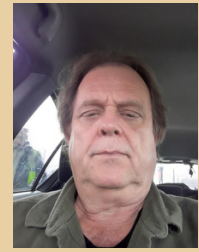




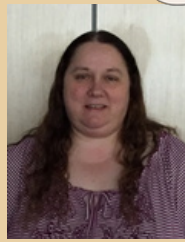
**Taft
Elementary
School**



**Taft 7-12
Middle & High
School**



**Oceanlake
Elementary
School**



**LINCOLN COUNTY
SCHOOL DISTRICT**



Welcome back to another great year !

WHAT'S GROWING ON? -LCSD SCHOOL GARDENS-

Summer School was Pretty SWEET!

K-6 Summer School students got daily doses of garden lessons. They explored topics like creating spaces for our pollinator friends, how water moves through the environment, how to use compasses to help plants grow, the flavors and fragrances of plants, mini-microgreen nutrition powerhouse farms, and creating wearable art with plant pigments. It was a joy to see all the hands-on learning and exploration that was taking place in the classrooms and gardens.



Toledo High summer school students had a lesson on honey bees and their importance in Oregon agriculture. The students learned how to harvest and process comb honey.



Want to be part of an amazing team?
Go to us.sodexo.com or call (541) 336-2156.



@lcsdschoolgardens



@Lincoln County Oregon School Gardens

FRESH FRUIT AND VEGETABLE PROGRAM (FFVP)

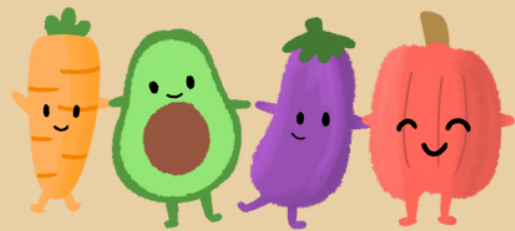


The Fresh Fruit and Vegetable Program (FFVP) is an important tool in our effort to combat childhood obesity. The program has been successful in introducing elementary school children (K-8) to a variety of produce that they otherwise might not have the opportunity to try.

This month's offerings include: Kiwi, Pears, Star Fruit, Avocado, Pineapple, Blackberries, Tangerines, and Orange Cauliflower.

DID YOU KNOW?

The Star Fruit gets its name from its star-like shape when sliced crosswise.



166 pounds



The weight above represents school garden harvests from 7/1/24 to the end of the prior month that have been put back into school meals.