

Survival Impact of Primary Tumor Lymph Node Status and Circulating Tumor Cells in Patients with Colorectal Liver Metastases

Lars Thomas Seeberg, MD^{1,6}, Cathrine Brunborg, MSc², Anne Waage, MD, PhD¹, Harald Hugenschmidt, MD¹, Anne Renolen, MSc³, Ingunn Stav, MSc³, Bjørn A. Bjørnbeth, MD, PhD¹, Elin Borgen, MD, PhD³, Bjørn Naume, MD, PhD^{4,5}, Kristoffer W. Brudvik, MD, PhD¹, and Gro Wiedswang, MD, PhD¹

¹Department of Gastrointestinal Surgery, Oslo University Hospital, Oslo, Norway; ²Oslo Centre of Biostatistics and Epidemiology, Research Support Services, Oslo University Hospital, Oslo, Norway; ³Department of Pathology, Oslo University Hospital, Oslo, Norway; ⁴Department of Oncology, Oslo University Hospital, Oslo, Norway; ⁵Institute of Clinical Medicine, Oslo University Hospital, Oslo, Norway; ⁶Department of Gastrointestinal Surgery, Vestfold Hospital Trust, Tønsberg, Norway

ABSTRACT

Objective. The aim of this study was to analyse the survival impact of primary tumor nodal status (N0/N+) in patients with resectable colorectal liver metastases (CLM), and to determine the value of circulating and disseminated tumor cells (CTCs/DTCs) in this setting.

Methods. In this prospective study of patients undergoing resection of CLM from 2008 to 2011, peripheral blood was analyzed for CTCs using the CellSearch System[®], and bone marrow was sampled for DTC analyses just prior to hepatic resection. The presence of one or more tumor cells was scored as CTC/DTC-positive. Following resection of the primary tumor, the lymph nodes (LNs) were examined by routine histopathological examination.

Results. A total of 140 patients were included in this study; 38 patients (27.1%) were negative at the primary colorectal LN examination (N0). CTCs were detected in 12.1% of all patients; 5.3% of patients in the N0 group and 14.7% of patients in the LN-positive (N+) group ($p = 0.156$), with the LN-positive group (N+) consisting

of both N1 and N2 patients. There was a significant difference in recurrence-free survival (RFS) when analysing the N0 group versus the N+ group ($p = 0.007$) and CTC-positive versus CTC-negative patients ($p = 0.029$). In multivariate analysis, CTC positivity was also significantly associated with impaired overall survival (OS) [$p = 0.05$], whereas DTC positivity was not associated with survival.

Conclusion. In this cohort of resectable CLM patients, 27% had primary N0 colorectal cancer. Assessment of CTC in addition to nodal status may contribute to improved classification of patients into high- and low-risk groups, which has the potential to guide and improve treatment strategies.

In surgery for colorectal cancer (CRC), primary tumors are resected with curative intent, if possible. However, more than 25% of CRC patients with localized disease at diagnosis will die as a result of cancer relapse,^{1,2} with liver being the most frequent metastatic site.^{1–3}

Postoperative staging of the primary cancer is based on histological examination of the specimen, traditionally according to the tumor, node, metastases (TNM) staging system.⁴ Currently, the indication for adjuvant treatment is founded on this staging as colon cancer patients with lymph node (LN) involvement are offered chemotherapy postoperatively. Although the prognosis of patients with node-positive disease is inferior to those with node-negative disease, the outcome differs highly within the same TNM stage.⁵ In fact, between 25 and 40% of patients with primary node-negative CRC will develop liver metastases.^{5–9}

Electronic supplementary material The online version of this article (doi:10.1245/s10434-017-5818-2) contains supplementary material, which is available to authorized users.

© The Author(s) 2017. This article is published with open access at Springerlink.com

First Received: 14 November 2016;
Published Online: 3 March 2017

L. T. Seeberg, MD
e-mail: sbseel@siv.no

Traditionally, the development of metastases has been understood as a sequential cancer progression where malignant transformation of the epithelial cells initially takes place in the intestinal mucosa, then infiltrates into the intestinal wall and thereafter secondary LN involvement, and, subsequently, metastasize to distant organs. Accordingly, a high-risk patient for future relapse of a non-metastatic cancer will then be a patient with LN involvement.^{10,11} However, in agreement with recent understanding of cancer biology, cancer cell dissemination may occur at all stages of cancer development.^{12,13}

The presence of circulating tumor cells (CTCs) is a significant prognostic factor in both non-metastatic¹⁴ and metastatic CRC.^{15–17} Disseminated tumor cells (DTCs) in the bone marrow (BM) have a prognostic impact in CRC patients, at least in long-term follow-up.¹⁸ The aim of the present study was to determine the relationship between primary tumor nodal status and CTC and DTC status in relation to survival in patients resected for colorectal liver metastases (CLM).

METHODS

Patients

Patients included in this study represent a subgroup from a prospective cohort study of 194 CLM patients referred to Oslo University Hospital for surgical treatment from May 2008 to December 2011. This cohort has been previously described in detail by Seeberg et al.¹⁵ In order to obtain a homogenous study population of CLM patients with resectable liver metastases and reliable LN status for the present analysis, two patients without resection of their primary tumor, and hence unknown nodal status, were excluded. Thirteen of the 60 node-negative patients had received neoadjuvant radiotherapy and/or chemotherapy before resection of the primary tumor, and were excluded because of uncertain nodal status. Another three patients had an inadequate number of lymph nodes resected (<8), according to the present Norwegian guidelines,¹⁹ and were therefore excluded. In addition, 17 patients were evaluated as primary unresectable for their liver metastases. In 19 patients, the liver metastases were non-resectable preoperatively or due to progression after the first-stage liver resection. After exclusion of all these patients, 140 patients remained and were eligible for the present analysis (Fig. 1). Clinical follow-up consisted of regular consultations every 4 months, with clinical and radiological assessments. Recurrence was determined as radiologically-proven relapse of the disease.

Ethics/Study Approval

All patient characteristics were registered prospectively in a database using the Filemaker Pro Advanced

documentation (Santa Clara, CA, USA). The study protocol was approved by the Regional Ethical Committee in Oslo, Norway, and the Oslo University Hospital Patient-Surveillance Service. The database was approved by the Data Protection Officer for Research, and permission for biobanking was obtained from the National Health Department.

Circulating Tumor Cell (CTC) Detection

The US FDA-approved CellSearch System (Janssen Diagnostics LLC, Raritan, NJ, USA) was used for CTC detection. The samples were taken under general anesthesia, just prior to liver resection from peripheral blood. The method has been previously described in detail.²⁰ Blood samples were collected into CellSave tubes, one tube per patient (7.5 ml), and the samples were kept at room temperature and processed at the Micrometastasis Laboratory, Oslo University Hospital, within 96 h of collection. CTC positivity was defined as one or more CTCs detected per sample of blood.²¹

Bone Marrow Preparation and Disseminated Tumor Cell (DTC) Detection

The BM aspirations were performed at the same time as the CTC sampling, by bilateral aspiration from the crista iliaca anterior (5 ml BM from each site), and processed as previously described.²² As the CellSearch System is not recommended or validated for BM analyses, immunocytochemical detection was performed manually by density centrifugation using ficoll-hypaque to isolate the BM mononuclear cells, followed by the preparation of cytopins. The spins were immunostained using anticytokeratin antibodies AE1/AE3, and screened using the Ariol SL-50 automated screening system to identify epithelial cancer cells.^{22,50} The same number of slides were analyzed with an irrelevant control antibody to rule out false positives. All immunopositive candidate cells were evaluated by a pathologist (EB), and only cells with immune morphology satisfying the standard criteria for DTCs were scored as positive. DTC positivity was defined as one or more DTCs detected, and thus DTC detection is based on a different system than CTC detection with separate sensitivity and specificity.

Pathological Examination

The specimens were analyzed at the local hospital, assessing tumor differentiation, resection margins, and T status. No assessment of KRAS status or microsatellite instability were performed. LNs exceeding 3 mm were divided into two or more parts parallel to their long axis,

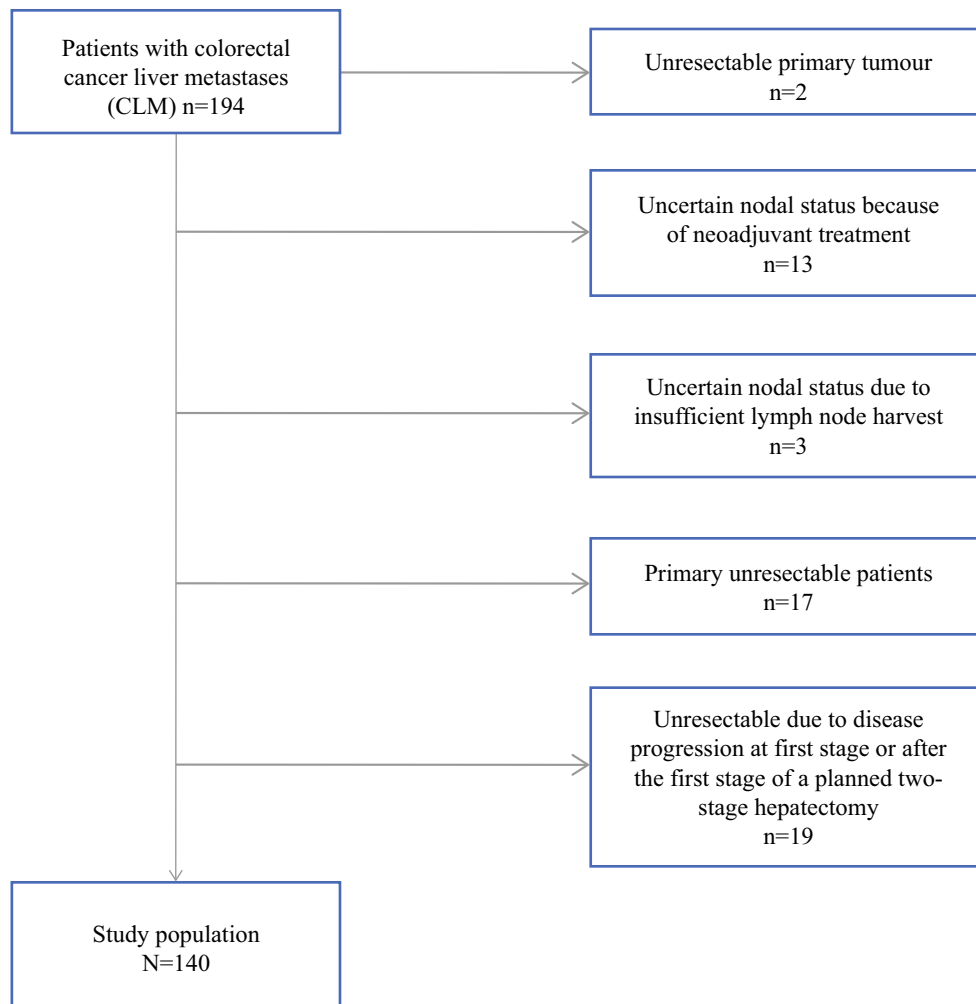


FIG. 1 Study selection process for the cohort of 194 CLM patients, selecting the actual study population of 140 patients with resectable CLM. CLM colorectal liver metastases

and all nodes were examined by routine microscopy, i.e. in 3–4 μm hematoxylin and eosin-stained sections. Patients were registered as being LN-positive (N+) or LN-negative (N0); the N+ group included both N1 (67 patients) and N2 (35 patients) [Table 1]. According to the Norwegian guidelines at the time,²³ immunohistochemistry or polymerase chain reaction (PCR) analyses were not routinely performed.

Statistical Methods

Data were analyzed using IBM SPSS version 20 (IBM Corporation, Armonk, NY, USA) and STATA 11.0 (StataCorp LP, College Station, TX, USA). Differences in continuous variables were tested using an independent sample *t* test and the Pearson Chi square test for contingency tables. The Fisher's exact test was used to compare ratios. An explanatory strategy was used to investigate the

relationship between N status and survival. All other variables were only of interest as possible confounders or effect modifiers of this association. A Mantel–Haenszel stratification analysis using the patient years (time) model was performed to quantify confounders and to pinpoint effect modifiers, using the Breslow–Day test of heterogeneity.

Adjustment for multiple confounders was carried out using the Cox proportional hazard regression model with a manual backward elimination procedure. Kaplan–Meier survival curves were used to determine differences in survival between N0/N+ , and outcomes were recorded as recurrence-free survival (RFS) and overall survival (OS). OS/RFS was defined as the number of days from resection of CLM to death/radiological recurrence. The association between N status and survival was quantified by hazard ratio (HR) with its 95% confidence interval (CI). Statistical significance was set at $p < 0.050$.

TABLE 1 Characteristics of the CLM patient cohort [*n* = 140]

	N0 [<i>n</i> = 38] (%)	N+ [<i>n</i> = 102] (%)	<i>p</i> -Value
Age, years (\pm SD)	64.4 (11.0)	65.1 (9.2)	0.71 ^a
Sex			0.81 ^b
Males	21 (55.3)	54 (52.9)	
Females	17 (44.7)	48 (47.0)	
Primary			0.007 ^b
Colon	32 (84.2)	61 (59.9)	
Rectum	6 (15.8)	41 (40.1)	
T status			0.001 ^c
T2	11 (28.9)	3 (2.9)	
T3	25 (65.8)	82 (80.4)	
T4	1 (2.6)	15 (14.7)	
Nodal status ^c	38 (27.1)	102 (72.9)	
CEA (range)	3.5 (1–106)	6 (1–1381)	0.06 ^d
Liver metastases			0.002 ^c
Synchronous	15 (39.5)	70 (68.7)	
Metachronous	23 (60.5)	32 (31.3)	
Neoadjuvant ^f			0.004 ^c
Yes	15 (39.5)	66 (66.7)	
No	23 (60.5)	33 (33.3)	
Adjuvant ^g			0.14 ^c
Yes	21 (55.3)	68 (68.7)	
No	17 (44.7)	31 (31.3)	
CTCs			0.16 ^b
Positive, \geq 1 CTC	2 (5.3)	15 (14.7)	
Negative	36 (94.7)	87 (85.3)	
DTCs			0.73 ^b
Positive, \geq 1 DTC	4 (10.5)	8 (7.8)	
Negative	34 (89.5)	94 (92.2)	
Death			0.27 ^c
Yes	7 (18.4)	28 (27.5)	
No	31 (81.6)	74 (72.5)	
Recurrence			0.008 ^c
Yes	19 (50.0)	75 (73.5)	
No	19 (50.0)	27 (26.5)	

CLM colorectal liver metastases, SD standard deviation, CEA carcinoembryonic antigen, CTCs circulating tumor cells, DTCs disseminated tumor cells

^a Independent sample *t*-test

^b Fisher's exact test

^c Pearson's *Chi* square test

^d Mann–Whitney *U* test. The following variables have missing values: T status, *n* = 3; neoadjuvant treatment, *n* = 3; adjuvant treatment, *n* = 3

^e In the lymph node-positive group (N+), 67 were N1 and 35 were N2. Median number of lymph nodes in the N0 group was 14 (8–53)

^f Neoadjuvant treatment before liver resection (FOLFOX, *n* = 69; FOLFIRI, *n* = 3; FOLFIRI-bevacizumab, *n* = 7; folinic acid-fluorouracil, *n* = 2)

^g Adjuvant treatment after liver resection (FOLFOX, *n* = 74; FOLFIRI, *n* = 1; FOLFIRI-bevacizumab, *n* = 12; folinic acid-fluorouracil, *n* = 2)

RESULTS

Patients

Table 1 summarizes the characteristics of the 140 CLM patients, with 27.1% N0 ($n = 38$) and 72.9% N+ ($n = 102$) tumors. A T2 primary tumor was significantly more common in the N0 group (29.0% vs. 2.9% in the N+ group, $p = 0.001$) and primary colon cancer had a higher frequency of N0 status than primary rectal cancer ($p = 0.007$). Patients with RFS of more than 6 months between the primary tumor resection and liver metastases were more prone to have N0 primary cancer (60.5%), and, correspondingly, patients with <6 months RFS were more prone to have N+ disease (68.7%, $p = 0.002$). Fifteen patients in the N0 group (15/38) and 66 patients in the N+ group (66/102) received neoadjuvant treatment before liver resection. Patients were followed until the date of death or end of/last follow-up. The median follow-up time was 24 (1–61) months.

CTC and DTC Detection

CTCs were detected in 12.1% of all patients; 5.3% in the N0 group and 14.7% in the N+ group ($p = 0.156$). Of the 17 CTC-positive patients, the number of CTCs detected were one in four (four patients), two CTCs (four patients), three CTCs (three patients), four CTCs (four patients) and five CTCs (two patients).

Interestingly, 80.2% (69/86) of the CTC-negative patients received neoadjuvant chemotherapy to the primary tumor compared with 60% (9/15) in the CTC-positive patients, supporting the sterilization effect of chemotherapy. However, in CTC-negative patients, 62.4% (53/85) received neoadjuvant treatment before liver resection compared with 92.9% (13/14) of the CTC-positive patients. To date, in this study a sterilization effect of chemotherapy on CTCs cannot be confirmed (data not shown).

DTCs were present in 8.6% of all patients; 10.5% in the N0 group and 7.8% in the N+ group ($p = 0.734$). DTC presence had no impact on either RFS or OS.

Recurrence-Free Survival

Kaplan–Meier curves show a significant difference in RFS comparing N0 patients with N+ patients (26 vs. 9 months, $p = 0.007$) [Fig. 2a]. There was also a significant difference in RFS between CTC-positive and CTC-negative patients (6 vs. 13 months, $p = 0.029$) [Fig. 2b].

The crude HR for N status of the primary tumor and RFS after resection of the CLM was 1.95 (95% CI 1.17–3.23, $p = 0.010$). Potential confounders of the association between N status and RFS were identified, and the

results of the stratified analysis are shown in electronic supplementary Table 1.

In the stratified analysis, the timing and number of liver metastases, in addition to neoadjuvant chemotherapy, were identified as possible confounders (confounding effect >8%). By multivariate Cox regression analysis, the number and timing of liver metastasis were identified as the strongest confounders (Table 2).

Controlling for multiple confounding, the association between N status and RFS remained statistically significant (adjusted HR [HR_{adj}] 1.74, 95% CI 1.07–2.83, $p = 0.03$). Overall, an association was noted between N+/N0 and synchronous/metachronous liver metastases and RFS ($p = 0.006$; electronic supplementary Fig. 1).

Overall Survival

Kaplan–Meier analyses showed no significant difference in OS between N0 and N+ patients (Fig. 2c). Analysing CTC status, no significant difference in OS between positive and negative patients was detected (53 vs. 52 months, $p = 0.098$) [Fig. 2d]. However, studying survival and CTC status in N+ patients, CTC-positive N+ patients had impaired survival compared with CTC-negative N+ patients (median survival 27 vs. 52 months, $p = 0.024$) [Fig. 3].

The crude HR for the association between N status and OS was 1.59 (95% CI 0.69–3.64, $p = 0.274$). Potential confounders were identified, and the results of the stratification analyses are shown in electronic supplementary Table 2.

In multivariate Cox regression analysis, CTC positivity and number of liver metastases were identified as the strongest confounders (Table 3). When controlling for multiple confounding, the association between N status and OS was not statistically significant (HR_{adj} 1.43, 95% CI 0.62–3.32, $p = 0.065$).

Mortality in CTC-positive patients was 2.3-fold higher than in CTC-negative patients when adjusting for primary nodal status and number of liver metastases (Table 3).

DISCUSSION

In this study of resectable CLM patients, 27% of patients were N0 when examining their primary surgical specimen LNs. The frequency of CTC positivity at the time of CLM surgery was 12.1%, and was considerably higher in the N+ group compared with N0 patients. LN+ CTC-positive was associated with significant inferior RFS and OS. In the N0 group, only 5.3% of patients were CTC-positive; however, nodal status at primary surgery was not significantly associated with a difference in OS (Fig. 2). The presence of one or more CTCs at the time of CLM

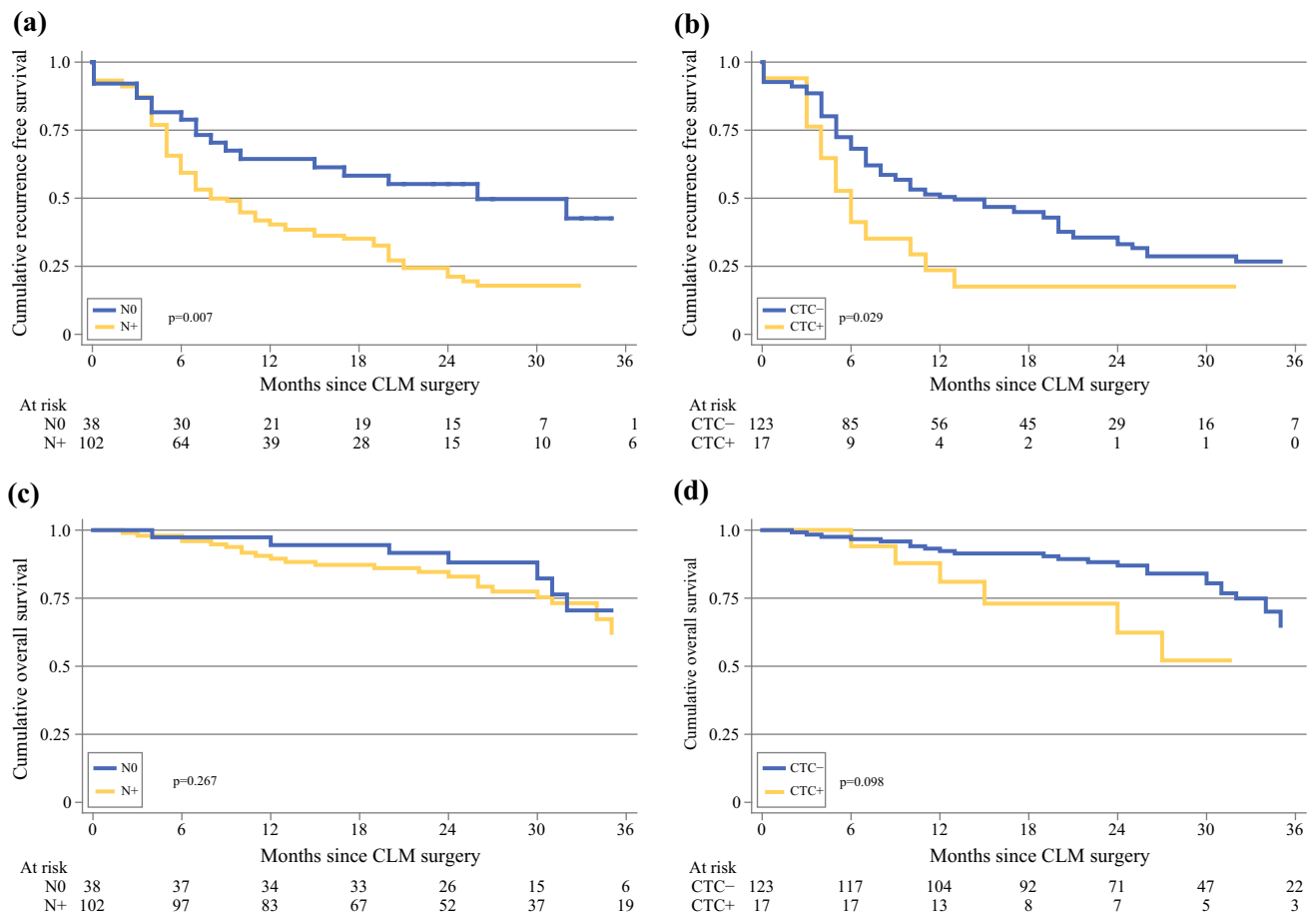


FIG. 2 (a) Recurrence-free survival according to lymph node status (N+/N0) in 140 patients with resectable CLM ($p < 0.01$). (b) Recurrence-free survival according to CTC status in peripheral blood detected at liver surgery in 140 patients with resectable CLM ($p = 0.029$). (c) Overall survival analysing lymph node status (N+/N0) in 140 patients with resectable CLM ($p = 0.267$). (d) Overall

survival according to CTC status in the peripheral blood at liver surgery in 140 patients with resectable CLM ($p = 0.098$). CLM colorectal liver metastases, CTC circulating tumor cells

TABLE 2 Association between N+/N0 and recurrence-free survival after adjusting for multi-confounders in a cohort of 140 patients with CLM (multivariate analysis)

	Level	HR	95% CI	Standard error	<i>p</i> -Value
N status	N+/N0	1.78	1.02–3.13	0.43	0.04
No. of liver metastases	>3/1–3	1.92	1.17–3.16	0.32	0.009
Synchronous liver metastasis	Yes/no	1.45	0.91–2.31	1.08	0.12

CLM colorectal liver metastases, HR hazard ratio, CI confidence interval

surgery was one of the strongest covariates for RFS and OS. This is in agreement with previous reports, suggesting CTCs are equal to, or even superior to, the conventional staging tools in estimating prognosis.^{15, 24} The combination of CTC and nodal status was superior to either variable individually.²⁵

The presence of LN metastases is a well-recognized prognostic factor^{26–28} but the optimal number of LNs

required for adequate staging is uncertain. Evaluation of at least 12 nodes is widely cited in clinical guidelines.^{29–31} LN harvest is affected by several factors, such as microsatellite instability and tumor location.³² Rhabari et al. showed that molecular detection of tumor cells in regional LNs was associated with an increased risk of disease recurrence and poor survival in patients with apparently node-negative CRC. This emphasizes the

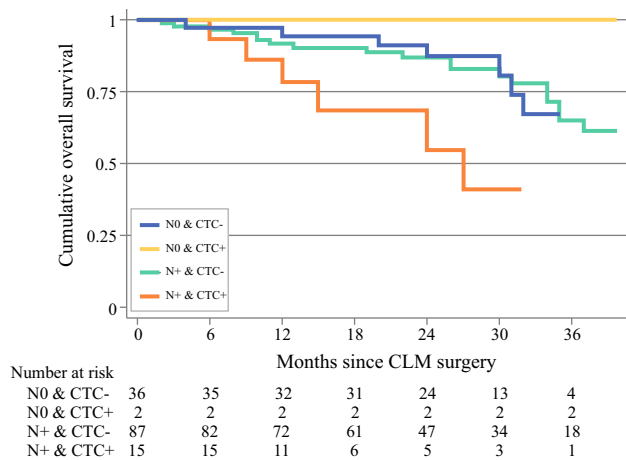


FIG. 3 Overall survival analyzing the combination of lymph node status (N+/N0) and CTC status at liver surgery in 140 patients with resectable CLM. *CTC* circulating tumor cells, *CLM* colorectal liver metastases

importance of adequate molecular examination of the retrieved nodes for correct staging.³³

In spite of general improvement in diagnostics, prognostic tools, and surgical and pathological evaluation, 25–50% of CRC patients experience recurrence. On the other hand, 50% of node-positive CRC patients seem to be cured by surgery alone. Adjuvant treatment has been proven to increase survival in non-metastatic CRC,^{34,35} but the survival benefit of chemotherapy treatment varies.³⁶ Selection criteria for chemotherapy and targeted treatment are warranted, and biological markers may contribute to this.³⁷

CTCs are components of the metastatic cascade, and CTC presence has proven to be a strong predictor of survival in patients with early and metastatic epithelial cancer, including CRC.^{38–41} The impact of CTCs on survival in CRC has been reported in a meta-analysis by Rahbari et al. but the study has been criticized for methodological heterogeneity.⁴⁰ A recent meta-analysis by Huang et al. confirms the prognostic significance of CTCs detected using the CellSearch system in CRC.²⁴ Huang et al. conclude that uncertainties still remain regarding the optimal sampling time for CTC analyses to provide the most accurate prognostic information. Serial sampling seems to represent an important tool for monitoring treatment.^{42,43}

The cut-off value for CTC positivity differs between studies. The impact of the number of CTCs on survival has been published by our group.¹⁷ The low cut-off value in this study (one or more CTCs per 7.5 ml of blood) was chosen because the study included patients being treated with chemotherapy, knowing the negative impact of such treatment on CTC levels,⁴⁴ as also reported in the present study. Thus, the cut-off value of being CTC-positive in metastatic CRC patients is not yet settled.⁴⁵

In this study, 15 of the N0 patients had synchronous liver metastases and all received neoadjuvant chemotherapy. These patients had a significantly better RFS than N+ patients with synchronous liver metastases (electronic supplementary Fig. 1). The high frequency of metastases in the N0 patients supports the view that cancer cell contamination occurs at different stages in cancer development. In N0 patients with synchronous liver metastases, the tumor cells have bypassed the LNs, and one could hypothesize that the disease may be more chemoresponsive when limited to the liver.^{46,47} These patients may be prime candidates for neoadjuvant treatment.

Supported by the results in our study, a possible approach to improve prognostic accuracy could be to combine CTC detection and N staging, as also suggested by Allen-Mersh et al.²⁵ and Van Dalum et al.⁴⁸ This might improve selection to adjuvant chemotherapy in both LN-negative and LN-positive CRC patients. Serial CTC monitoring during follow-up may further improve surveillance of metastatic CRC patients.⁴⁸ Our recent results indicate the potential impact of detection of CTCs for prognosis and recurrence through serial monitoring.⁴⁷ In addition, further molecular characterization of CTCs to identify therapeutic targets opens the possibility of tailoring CRC treatment individually.

The presence of DTCs at primary surgery is reported to be a prognostic biomarker of impaired survival in patients with CRC in long-term follow-up.¹⁸ This may be explained by DTCs representing dormant tumor cells with the ability to later escape dormancy, proliferate, and cause relapse in apparently curatively resected cancer patients, suggesting a role for DTCs as a biomarker in CRC.⁴⁹ In the present study, the presence of DTCs in CLM surgery did not seem to have an impact on survival, but the follow-up time was limited.

This study has several limitations. The short median follow-up is partly because 40.8% of the study population

TABLE 3 Association between N+/N0 and overall survival after adjusting for multi-confounders in a cohort of 140 patients with CLM (multivariate analysis)

	Level	HR	95% CI	Standard error	p-Value
N status	N+/N0	1.43	0.61–3.32	0.55	0.40
No. of liver metastasis	>3/1–3	2.07	1.00–4.28	0.54	0.05
CTC-positive	Yes/No	2.31	1.00–4.28	0.66	0.05

CLM colorectal liver metastases, *HR* hazard ratio, *CI* confidence interval, *CTC* circulating tumor cell

had died within 4 years of follow-up. More extensive follow-up would further elucidate the clinical outcome for these patients. Sampling of CTC and DTC was performed at the time of liver surgery. Thus, we cannot exclude the possibility that any chemotherapy given before sampling (adjuvant for the primary or neoadjuvant for the liver metastases) may have affected the CTC and DTC status. This could explain a relative low rate of positivity. Only a small number of N0 patients ($n = 38$) were analyzed, and the frequency of CTC positivity among these patients was low (5.3%). N0 CTC-positive patients appear to be a high-risk group but further studies are needed to confirm this.

Due to non-standardized pathology reports at the time of this study, more than 30% did not report vascular invasion. Unfortunately, the presence of vascular invasion could not be analyzed in the present study. Molecular analyses for characterization of CTCs as microsatellite instability and KRAS/BRAF mutation may also provide clinically relevant information for prognosis and treatment options in these patients, and should be further tested in clinical studies.

CONCLUSION

This study shows the presence of CTCs is associated with impaired survival. CTC status seems to provide additive prognostic information to LN status in patients with CLM.

ACKNOWLEDGMENT The work was supported by Oslo University Hospital, Oslo, Norway, Vestfold Hospital Trust, Tønsberg, Norway, Finn Wilhelmsen Foundation, Eckbo Foundation and The Blix Family Foundation.

FUNDING Lars Thomas Seeberg received funding from The Eckbo Foundation, The Finn Wilhelmsen Foundation and The Blix Family Foundation.

CONFLICT OF INTEREST Lars Thomas Seeberg, Cathrine Brunborg, Anne Waage, Harald Hugenschmidt, Anne Renolen, Ingunn Stav, Bjørn A. Bjørnbeth, Elin Borgen, Bjørn Naume, Kristoffer W. Brudvik, and Gro Wiedswang have no conflicts of interest or economic concerns that may influence the issues or conclusions in this article.

OPEN ACCESS This article is distributed under the terms of the Creative Commons Attribution 4.0 International License (<http://creativecommons.org/licenses/by/4.0/>), which permits unrestricted use, distribution, and reproduction in any medium, provided you give appropriate credit to the original author(s) and the source, provide a link to the Creative Commons license, and indicate if changes were made.

REFERENCES

- Brenner H, Kloor M, Pox CP. Colorectal cancer. *Lancet*. 2014;383:1490–502.
- Sargent D, Sobrero A, Grothey A, et al. Evidence for cure by adjuvant therapy in colon cancer: observations based on individual patient data from 20,898 patients on 18 randomized trials. *J Clin Oncol*. 2009;27:872–77.
- Karsa LV, Lignini TA, Patnick J, et al. The dimensions of the CRC problem. *Best Pract Res Clin Gastroenterol*. 2010;24:381–96.
- Edge SB, Compton CC. The American Joint Committee on Cancer: the 7th Edition of the AJCC cancer staging manual and the future of TNM. *Ann Surg Oncol*. 2010;17:1471–74.
- Rees M, Tekkis PP, Welsh FKS, et al. Evaluation of long-term survival after hepatic resection for metastatic colorectal cancer. *Ann Surg*. 2008;247:125–35.
- Fong Y, Fortner J, Sun RL, Brennan MF, Blumgart LH. Clinical score for predicting recurrence after hepatic resection for metastatic colorectal cancer. *Ann Surg*. 1999;230(3): 309–318; discussion 318–21.
- Mala T, Bøhler G, Mathisen Ø, et al. Hepatic resection for colorectal metastases: can preoperative scoring predict patient outcome? *World J Surg*. 2002;26:1348–53.
- Nordlinger B, Peschard F, Malafosse R. Resection of liver metastases from colorectal cancer-how can we improve results? *Colorectal Dis*. 2003;5:515–17.
- Adam R, Delvart V, Pascal G, et al. Rescue surgery for unresectable colorectal liver metastases downstaged by chemotherapy: a model to predict long-term survival. *Ann Surg*. 2004;240:644–57; discussion 657–8.
- Veen T, Nedrebø BS, Stormark K, et al. Qualitative and quantitative issues of lymph nodes as prognostic factor in colon cancer. *Dig Surg*. 2013;30:1–11.
- Veen T, Stormark K, Nedrebø BS, et al. Long-term follow-up and survivorship after completing systematic surveillance in stage I-III colorectal cancer: who is still at risk? *J Gastrointest Cancer*. 2015;46(3):259–66.
- Stoecklein NH, Klein CA. Genetic disparity between primary tumours, disseminated tumour cells, and manifest metastasis. *Int J Cancer*. 2010;126:589–98.
- Klein CA. Parallel progression of primary tumours and metastases. *Nat Rev Cancer*. 2009;9:302–12.
- Bork U, Grützmann R, Rahbari NN, et al. Prognostic relevance of minimal residual disease in colorectal cancer. *World J Gastroenterol*. 2014;20:10296–304.
- Seeberg LT, Waage A, Brunborg C, et al. Circulating tumor cells in patients with colorectal liver metastasis predict impaired survival. *Ann Surg*. 2015;261(1):164–71.
- Torino F, Bonmassar E, Bonmassar L, et al. Circulating tumor cells in colorectal cancer patients. *Cancer Treat Rev*. 2013;39(7):759–72.
- Groot Koerkamp B, Rahbari NN, Büchler MW, et al. Circulating tumor cells and prognosis of patients with resectable colorectal liver metastases or widespread metastatic colorectal cancer: a meta-analysis. *Ann Surg Oncol*. 2013;20(7):2156–65.
- Flatmark K, Borgen E, Nesland JM, et al. Disseminated tumour cells as a prognostic biomarker in colorectal cancer. *Br J Cancer*. 2011;104(9):1434–39.
- Cancer in Norway 2013. Cancer Registry of Norway; 2015.
- Riethdorf S, Fritsche H, Müller V, et al. Detection of circulating tumor cells in peripheral blood of patients with metastatic breast cancer: a validation study of the Cell Search system. *Clin Cancer Res*. 2007;13:920–28.
- Allard WJ, Matera J, Miller MC, et al. Tumor cells circulate in the peripheral blood of all major carcinomas but not in healthy subjects or patients with nonmalignant diseases. *Clin Cancer Res*. 2004;10:6897–904.
- Wiedswang G, Borgen E, Kåresen R, et al. Detection of isolated tumor cells in bone marrow is an independent prognostic factor in breast cancer. *J Clin Oncol*. 2003;21:3469–3478.
- Haugland HK, Casati B, Dørum LM, et al. Template reporting matters: a nationwide study on histopathology reporting on colorectal carcinoma resections. *Hum Pathol*. 2011;42:36–40.

24. Huang X, Gao P, Song Y, et al. Meta-analysis of the prognostic value of circulating tumor cells detected with the Cell Search System in colorectal cancer. *BMC Cancer*. 2015;30:15:202.
25. Allen-Merish TG, McCullough TK, Patel H, et al. Role of circulating tumour cells in predicting recurrence after excision of primary colorectal carcinoma. *Br J Surg*. 2007;94:96–105.
26. Compton CC, Fielding LP, Burgart LJ, et al. Prognostic factors in colorectal cancer. *Arch Pathol Lab Med*. 2000;124(7):979–94.
27. Baxter NN, Virnig DJ, Rothenberger DA, et al. Lymph node evaluation in colorectal cancer patients: a population-based study. *J Natl Cancer Inst*. 2005;97:219–25.
28. Baxter NN. Is lymph node count an ideal quality indicator for cancer care? *J Surg Oncol*. 2009;99:265–268.
29. Compton CC, Greene FL. The staging of colorectal cancer: 2004 and beyond. *CA Cancer J Clin*. 2004;54:295–308.
30. Sobin LH, Greene FL. TNM classification: clarification of number of regional lymph nodes for pNo. *Cancer*. 2001;92(2):452.
31. Fleshman J. Should total number of lymph nodes be used as a quality of care measure for stage III colon cancer? *Ann Surg*. 2009;249(4):564.
32. Søreide K, Nedrebø BS, Søreide JA, et al. Lymph node harvest in colon cancer: influence of microsatellite instability and proximal tumor location. *World J Surg*. 2009;33:2695–703.
33. Rahbari NN, Bork U, Motschall E, et al. Molecular detection of tumor cells in regional lymph nodes is associated with disease recurrence and poor survival in node-negative colorectal cancer: a systematic review and meta-analysis. *J Clin Oncol*. 2011;30:60–70.
34. Gray R, Barnwell J, McConkey C, et al. Adjuvant chemotherapy versus observation in patients with colorectal cancer: a randomised study. *Lancet*. 2007;370:2020–29.
35. André T, Boni C, Navarro M, et al. Improved overall survival with oxaliplatin, fluorouracil, and leucovorin as adjuvant treatment in stage II or III colon cancer in the MOSAIC Trial. *J Clin Oncol*. 2009;27:3109–16.
36. O'Connor ES, Greenblatt DY, LoConte NK. Adjuvant chemotherapy for stage II colon cancer with poor prognostic features. *J Clin Oncol*. 2011;29:3381–88.
37. Dent S, Oyan B, Honig A, et al. HER2-targeted therapy in breast cancer: a systematic review of neoadjuvant trials. *Cancer Treat Rev*. 2013;39:622–31.
38. Cohen SJ, Punt CJA, Iannotti N, et al. Prognostic significance of circulating tumor cells in patients with metastatic colorectal cancer. *Ann Oncol*. 2009;20:1223–29.
39. Sastre J, Maestro ML, Puente J, et al. Circulating tumor cells in colorectal cancer: correlation with clinical and pathological variables. *Ann Oncol*. 2008;19:935–38.
40. Rahbari NN, Aigner M, Thorlund K, et al. Meta-analysis shows that detection of circulating tumor cells indicates poor prognosis in patients with colorectal cancer. *Gastroenterology*. 2010;138:1714–26.
41. Peach G, Kim C, Zacharakis E, et al. Prognostic significance of circulating tumour cells following surgical resection of colorectal cancers: a systematic review. *Br J Cancer*. 2010; 102:1327–34.
42. Sastre J, Vidaurreta M, Gómez A, et al. Prognostic value of the combination of circulating tumor cells plus KRAS in patients with metastatic colorectal cancer treated with chemotherapy plus bevacizumab. *Clin Colorectal Cancer*. 2013;12:280–86.
43. Brudvik KW, Seeberg LT, Hugschmidt H, et al. Detection of circulating tumor cells at surgery and at follow-up assessment to predict survival after two-stage liver resection of colorectal liver metastases. *Ann Surg Oncol*. 2015;22(12):4029–37.
44. Alix-Panabières C, Pantel K. Challenges in circulating tumour cell research. *Nat Rev Cancer*. 2014;14:623–31.
45. Gazzaniga P, Raimondi C, Gradilone A, et al. Circulating tumor cells in metastatic colorectal cancer: do we need an alternative cutoff? *J Cancer Res Clin Oncol*. 2013;139:1411–16.
46. Katsuno H, Zacharakis E, Aziz O, et al. Does the presence of circulating tumor cells in the venous drainage of curative colorectal cancer resections determine prognosis? A meta-analysis. *Ann Surg Oncol*. 2008;5:3083–91.
47. Giessen C, Fischer von Weikersthal L, Laubender RP, et al. Evaluation of prognostic factors in liver-limited metastatic colorectal cancer: a preplanned analysis of the FIRE-1 trial. *Br J Cancer*. 2013;109:1428–1436.
48. Van Dalum G, Stam G-J, Scholten L, et al. Importance of circulating tumor cells in newly diagnosed colorectal cancer. *Int J Oncol*. 2015;46(3):1361–8.
49. McGowan PM, Kirstein JM, Chambers AF. Micrometastatic disease and metastatic outgrowth: clinical issues and experimental approaches. *Future Oncol*. 2009;5:1083–98.
50. Borgen E, Naume B, Nesland JM, et al. Use of automated microscopy for the detection of disseminated tumor cells in bone marrow samples. *Cytometry*. 2001;46:215–21.