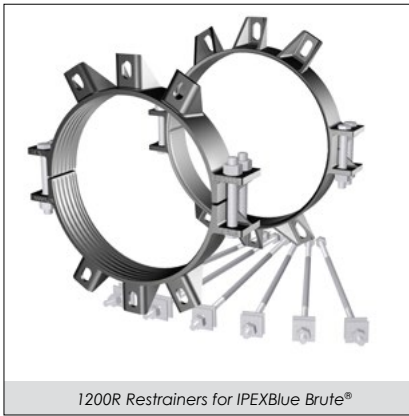




# Pipe Restrainers series 1200R

1200R Restrainer only  
for 14"-24" IPEX / Blue Brute® PVC Pressure Fittings



1200R Restrainers for IPEX Blue Brute®

### SUBMITTAL INFORMATION

PROJECT NAME:

ENGINEER:

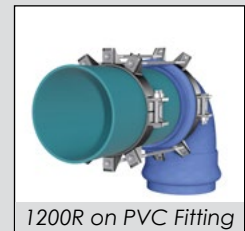
CONTRACTOR:

SPEC. SECTION:



### FEATURES & ADVANTAGES

- 360° contact, no pipe distortion or point loading
- Restrainers work with IPEX Blue Brute® PVC Pressure Fittings and C905 PVC Pressure Pipe.
- All restrainers are machined to exact tolerances.
- Rated at the full rated pressure of IPEX PVC Pipe fitting or the C905 pipe being installed, whichever is less with a 2:1 Safety Factor
- Supports wall of pipe with 360 degree contact
- Can be installed outside the trench, to ease installation
- T-Bolts/Rods/Hex Nuts: Low Alloy Steel Per ANSI/AWWA C111/A21.11
- Clamping Bolts: SAE J429 Grade5



1200R on PVC Fitting

\* Blue Brute® is a trademark of IPEX Branding, Inc.

### MATERIAL SPECIFICATIONS:

- Gland: Ductile Iron per ASTM A536, Grade 65-45-12

#### GLAND FINISH OPTIONS (Please check one):

- Standard: alkyd enamel coating
- Optional: Starbond™ TGIC polyester powder coating applied by an electrostatic spray process
- Optional: Other (specify) \_\_\_\_\_

#### HARDWARE OPTIONS (Please check):

- Standard: Bolt rods and nuts are high strength low alloy steel manufactured in accordance with ANSI/AWWA C111/A21.11-00
- Optional: Bolt rods and nuts alloy SS 304 per ASTM F593
- Optional: Bolt rods and nuts alloy SS 316 per ASTM F593
- Optional: Bolt rods and nuts Fluoropolymer Star-Blue coated high strength low alloy steel manufactured in accordance with ANSI/AWWA C111/A21.11-00



STAR® PIPE PRODUCTS



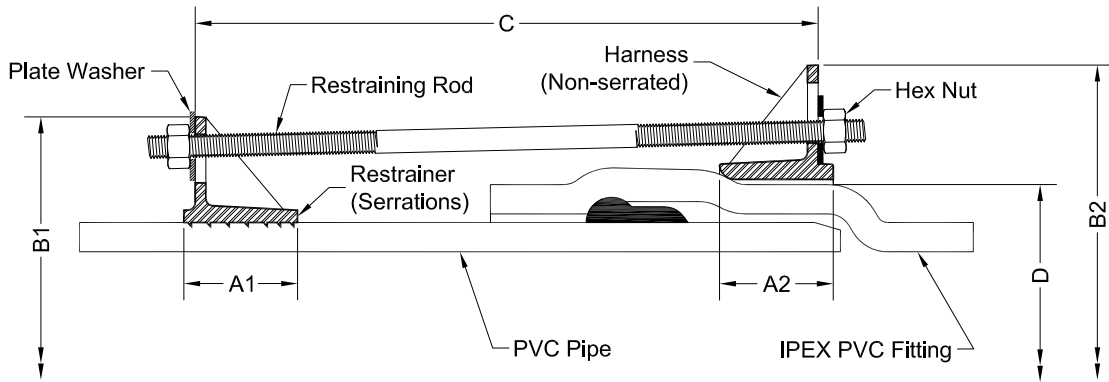
# Pipe Restrainers series 1200R

1200R Restrainer only  
for 14"-24" IPEX / Blue Brute® PVC Pressure Fittings

TECHNICAL INFORMATION

(TABLE A) CLAMPING BOLTS RECOMMENDED TORQUE

PIPE SIZE (IN)	MINIMUM TORQUE (FT-LBS)
14 - 24	130



PIPE RESTRAINERS 1200R SPECIFICATIONS\*

NOM. SIZE <sup>1</sup>	PVC PIPE WITH DUCTILE IRON PIPE O.D. STYLE 1200C	PVC FITTING BELL OD "D"		A1	A2	B1 APPROX.	B2 APPROX.	C MAX.	RESTRAINT BOLTS/RODS		CLAMPING BOLTS		APPROX WT. (LBS)
		O.D.	MIN.						MAX.	QTY	SIZE	QTY	
14	15.30	17.28	17.73	4.00	3.75	22.68	25.27	21	6	3/4 x 24	8	7/8 x 7**	130
16	17.40	19.64	20.17	3.75	3.75	24.65	27.71	27	6	3/4 x 30	8	7/8 x 6 1/2	123
18	19.50	22.25	22.50	4.25	4.00	26.65	30.04	27	8	3/4 x 30	8	7/8 x 6 1/2	150
20	21.60	25.00	25.25	5.00	5.00	28.88	32.79	27	8	3/4 x 30	8	1 1/8 x 8 1/2	220
24	25.80	30.00	30.25	5.00	5.00	33.98	37.93	33	12	3/4 x 36	8	1 1/2 x 8 1/2	290

Please check sizes:

\*All dimensions in inches except where indicated.  
\*\* Clamping bolt size for harness is 7/8 x 6 1/2

Pressure Rating (PSI) For PVC Pipe To PVC Pressure Fitting Connections\*

NOM. SIZE (IN.)	AWWA C900 (CIOD)									AWWAC909 (CIOD)
	DR14+	DR17+	DR18	DR21	DR25	DR27.5	DR32.5	DR41	DR51	IPEX PVCO
14	235	235	235	200	165	-	-	-	-	PV235
16	-	235	235	200	165	-	-	-	-	200
18	-	235	235	200	165	-	-	-	-	200
20	-	-	235	200	165	-	-	-	-	-
24	-	-	235	200	165	-	-	-	-	-

\*For ordinary water works with transient surges only. Ratings are for PVC pipes with SERIES 1200R Restrainer.  
+ Derated due to rating of PVC pressure fitting.

STAR® PIPE PRODUCTS