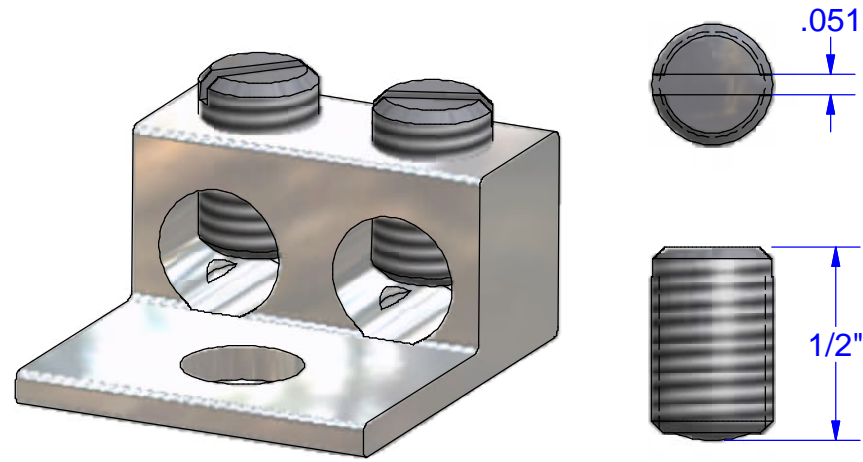
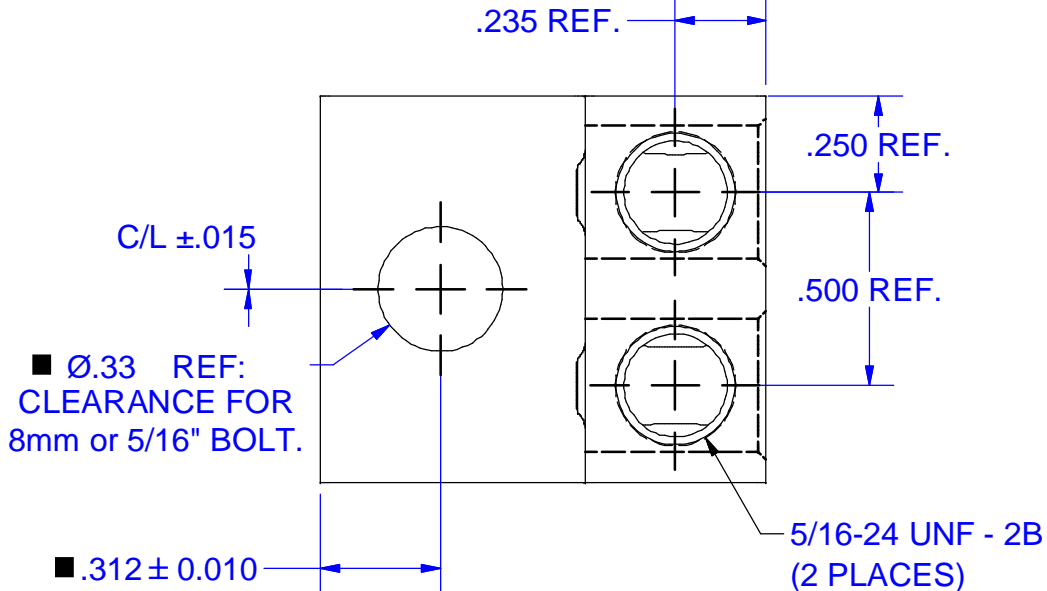


IHI UL/CSA Installation Guide to Drill or Enlarge Mounting Holes:

<https://lugsdirect.com/PDF%20Documents/IHI-MTG-HOLE-FIELD-MODS-UL&CSA-CERTIFICATIONS.pdf>

FLEX WIRE 4-12 AWG



RECOMMENDED DRIVER BITS

- CHAPMAN CM-96 9.5 x 1.0mm (.375" x .039")
- WIHA NO. 74021 8 x 1.2 mm (.31" x .047")
- WERA 05059517001 8 x 1.2mm (.31" x .047")
- 05072063001 8 x 1.2mm (.31" x .047")
- SEALS S2 8 x 1.2mm (5/16 HEX)



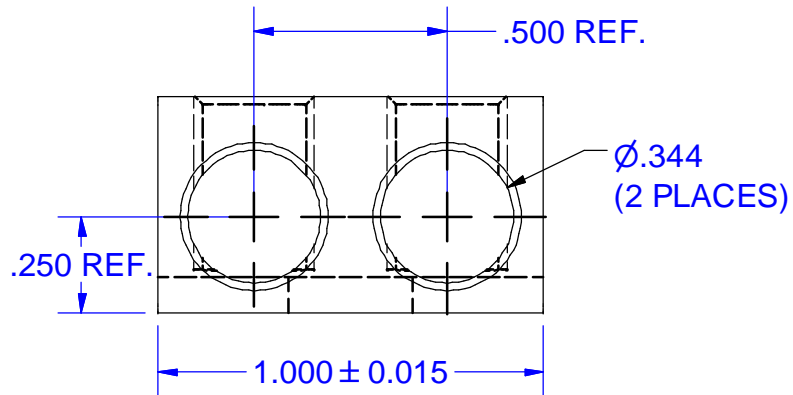
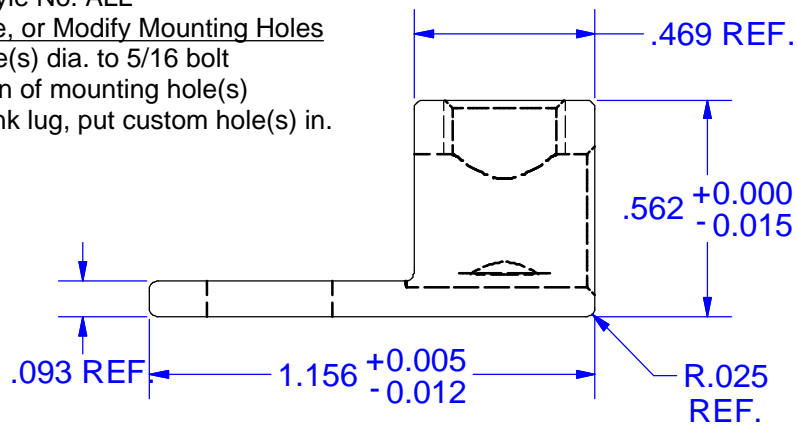
Cat. No. S2 Style No. ALL

■ Drill, Enlarge, or Modify Mounting Holes

- 1) Increase hole(s) dia. to 5/16 bolt
- 2) Move location of mounting hole(s)
- 3) If buying blank lug, put custom hole(s) in.

MARKING

- S2
- IHI Logo
- CSA Logo
- UL Logo
- 2-14
- CU9AL



NOTE:

PARTS TO BE SHIPPED WITH TORQUE VALUES ON UNIT CONTAINER

NOT FOR USE WHERE FAILURE CREATES A HAZARD TO HUMAN HEALTH OR SAFETY. ALL PRODUCTS ARE SUBJECT TO THIS FULL DISCLAIMER: <http://www.ihiconnectors.com/disclaimer.html>

FOR FURTHER INFORMATION ON THE PROPER USE OF THIS PRODUCT IN SPECIFIC APPLICATIONS SEE

<https://www.ihiconnectors.com/GuideToFlexFlexibleFineStrandedWireCableMechanicalLugsFAQ.html>

<https://www.ihiconnectors.com/Technical-Data-Installation.htm>

<https://lugsdirect.com/PDF Documents/5-16-SLOTTEDSCREW-BIT-RECOMMENDED-SPECS-IHICONNECTORS.pdf>



Expanded wire range with use of ferrules.

TORK KRIMP®, self crimping of standard UL Listed ferrules protected by PATENT No.10630005.

PATENT: www.ihiconnectors.com/patent.html

For full instructions: <https://lugsdirect.com/PDF Documents/IHI Agency Labels/S2-AGENCY-LABEL.pdf>

THIS DRAWING AND DESIGN ARE THE PROPERTY OF INTERNATIONAL HYDRAULICS, INC., CLEVELAND, OHIO, AND MAY NOT BE DUPLICATED, USED FOR THE BASIS OF DESIGN OR MANUFACTURE WITHOUT THE WRITTEN PERMISSION OF INTERNATIONAL HYDRAULICS, INC., CLEVELAND, OHIO.		INTERNATIONAL HYDRAULICS, INC.		
GENERAL TOLERANCES ±.015 (±0,038)		TITLE: 2S2 CONNECTOR		
MATERIAL: 6061-T6 (1011)	SIZE:	DRAWN BY: TDS	DWG NO.: 2S2 (SALES)	REV:
FINISH: TIN PLATE EMS	DATE: 8/17/09	IHI CONNECTORS		