



Split Screen Sonar/GPS

This divides the screen in half, allowing sonar to only use part of the screen. This is the MX-7gps factory setting and will come on automatically, giving you the most popular configuration.



GPS

When traveling or planning your next trip, you can turn off all sonar functions and use your MX-7gps with the mapping only features.



Sonar/GPS

Turning off SPLIT SCREEN will allow you to use more (or less) space towards your sonar displays. You can enable all 5 sonar screens and GPS simultaneously.

MarCum

TECHNOLOGIES

MX7 GPS

Quick Start Guide



LifePO4

Our most powerful and precise True Time® sonar engine now comes with the lightest, longest lasting, and fastest charging power source. Reduction in weight along with increased run times and faster recharge rates means you'll spend more time fishing and less time re-powering. The L-Series comes equipped with a 12-volt 10amp LiFePo4 battery weighing less than 3 pounds. *Estimated run time: 30 hours



Charging

To charge, simply couple the end of the charger with the end of the wiring harness. It is also normal for the light on the charger to be green if it is just plugged into the wall. When it is plugged into the wall and battery, you will see a red LED light appear on the charger. If the light is red, the battery is being charged. When your battery is fully charged, this red light should change to green.

Warranty

MarCum warranties this product to be free from defects in materials and workmanship for two years from the date of purchase. The warranty of the battery may differ from the system warranty, see website for details. This warranty applies to customers who properly complete the online product registration form found on the MarCum Technologies Website: www.MarCumTech.com

Service

If your unit is malfunctioning, check the support section of our website. You may find that the solution to your problem is something you can resolve yourself. If you need to send it in, there is no need to contact our office. Getting repairs made is as simple as going to our website, www.MarCumTech.com clicking the support tab and then filling out the MarCum Warranty claim.



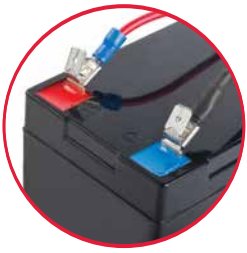
MarCum User Manuals are available for download from www.MarCumTech.com
Les manuels d'utilisation de MarCum sont disponibles en téléchargement sur www.MarCumTech.com

*Actual run times may vary depending on conditions.
30-1076-82192 2023-0316



LifePO4

www.MarCumTech.com



Connect Power

Your MX-7gps comes virtually ready to fish. Open the top cover of the soft pack, loosen the knobs and the monitor can now be positioned how you want it. Once the monitor is positioned, tighten the knobs again to hold the monitor in place. Look behind the monitor and connect the red wire to the red terminal and the black wire to the black terminal on the battery.



Insert Map Chip & Power up the system

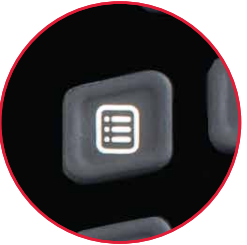
(map chip sold separately)

Using the MX-7gps can be as simple as installing a Navionics® Map Chip (sold separately) and pushing the Power Button—the factory settings will allow you to use the MX-7gps in the most popular configuration. Hit the Menu Key to explore all the options to customize your Display. With five different sonar portals, four different color palettes, two cone angles, and GPS Mapping, there are many possibilities.



Deploy the Transducer

When used in conjunction with the retractable pivoting transducer arm and rubber stopper, the transducer will automatically level itself in your ice hole. To begin operation, take the transducer out of the recessed holder, and rotate the adjustable ice arm out from inside the shuttle. Extend the transducer arm, (the cable should already be threaded through it with stopper in place) and deploy the transducer into the water.



Menu

To access the menu options, start by pressing the Menu button just above the power button. Use the arrow buttons to highlight the desired sub-menu and access other functions of the MX-7gps. Some of these functions are also accessible using the other buttons. When you press the MENU button, four sub-menus will be revealed—SONAR SETTINGS, GPS MAP SETTINGS, DISPLAY SETTINGS, and SYSTEM SETTINGS. When you press and hold down the MENU button, the system will alternate between full screen GPS map, when held again it will revert back to your last saved sonar layout.



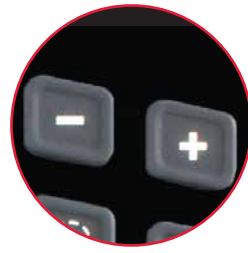
Scrolling

When the GPS functions are enabled, use the arrow buttons to scroll around map to find your next destination. You can also use the arrow buttons to highlight the desired sub-menu and access other functions of the MX-7gps.



Enter Key / Back Button

Many of the menu options within the MX-7gps are ON/OFF toggle or Radio buttons. This button allows your to activate or deactivate these functions within the sub-menus. If you have not highlighted a function that has a radio button, this will act as a "BACK" or previous screen button.



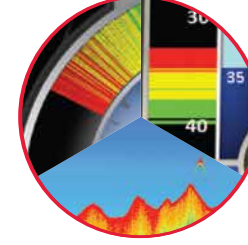
Zoom Function

When the GPS functions are enabled, the PLUS/MINUS buttons allow you to zoom in or out of the GPS window. When accessing the SENS, IR, or other functions within the menu system with a sliding scale, the PLUS/MINUS buttons allow you to increase or decrease the functions.



Adjust the Sensitivity

To adjust your sensitivity, first press the SENS button and the menu will appear with Sensitivity highlighted. Pressing the PLUS/MINUS will adjust your sensitivity, and the setting will now be displayed on the SENS gauge. The best SENS setting is achieved by turning up your sensitivity until you receive a clear and steady bottom reading. Now turn up the SENS until you just begin to display your bait without it fading or flickering.



Bottom Return

Hard-bottom readings (rock or gravel) will be displayed by a wide band of RED light indicating a strong signal. Conversely, a soft bottom (mud or silt) will return a weaker signal and will result in a narrower RED band or even a combined RED and GREEN band. A soft bottom with weed growth will often appear as a narrow RED or GREEN band combined with both solid and broken YELLOW segments indicating weeds.



IR Button

When other sonar units are causing interference to the display, activate the IR feature by depressing the IR key. There are 12-levels of Interference Rejection, and each press of the PLUS/MINUS buttons will change the level of Interference Rejection. The correct level of IR will be achieved when the display is clear of display clutter. In some extreme cases, clutter will be greatly reduced but not eliminated, try changing your Cone Angle.



Waypoints

To mark your location as a waypoint simply touch the WAYPOINT button located above the "X" EXIT button. If you would like to mark a waypoint that is not your current location, simply search the map with the four ARROW keys and press and hold the WAYPOINT button where you would like the waypoint to be located.



Exit Menu

The "X" or EXIT button will take you out of any screen that you have selected and return you the SONAR/GPS screen. If you have been searching the GPS section for a new location, the EXIT button will return you to your current GPS location on the map.