

ALPINE TRAIL E



TECHNICAL MANUAL

TABLE OF CONTENTS

Important Information	2	Cable Routing & Rubber Grommets	6
Adjusting the Bottom Bracket Height & Chainstay Length	3	Frame Technical Specifications	8
Adjusting the Headtube Angle	4	Bosch Technical Specifications	10
Battery Removal and Installation	5	Marin Customer Support	11

IMPORTANT INFORMATION

The Marin Alpine Trail E is a bike that can be adjusted to match the rider's needs and terrain. This document is intended to supplement the complete owner's manual. This document contains an overview of some parts diagrams, specifications, and adjustment instructions. This document is NOT a complete owner's manual and does not include important safety and installation information. You must refer to the complete owner's manual and get help from your official Marin dealer with assembly, use, service, and maintenance. Visit marinbikes.com/support for more information.

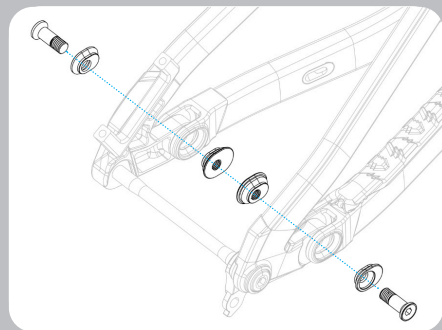
Failure to follow proper assembly instructions, hazard warnings, and compatible part recommendations may result in loss of control while riding and can lead to serious injury and/or death. We recommend having your bike assembled, adjusted, and serviced by a trained, professional bicycle mechanic. This manual is not intended to replace the assembly and service instructions provided by third-party component manufacturers.

ADJUSTING THE BOTTOM BRACKET HEIGHT & CHAINSTAY LENGTH

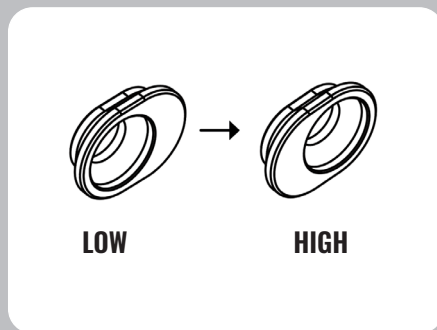
The Alpine Trail E frame can be adjusted for both bottom bracket (BB) height and chainstay (CS) length via flip chips at the chainstay pivot point to adapt to the trail and rider's preferences. The rider can choose between the factory setting LOW BB and LONG CS or a HIGH BB and SHORT CS position. To change to the HIGH BB and SHORT CS position, follow the steps below.

1. Remove the rear wheel. Then use a 6 mm hex wrench to remove the pivot bolts on the left and right chainstay rear pivot.
2. Rotate the flip chips 180 degrees (from LOW to HIGH). The HIGH call out will be right side up.
3. Use a 6 mm hex wrench to reinstall the two pivot bolts. Torque the bolts to 20 N·m. Reinstall the rear wheel. The bike is now in the HIGH BB and SHORT CS position.

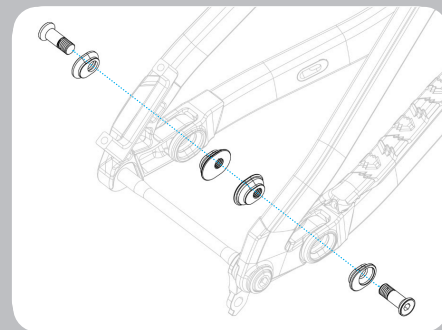
1



2



3

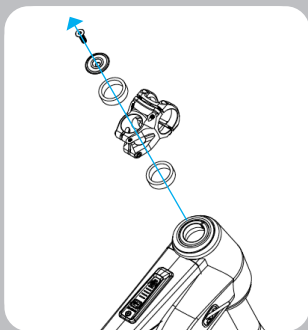


ADJUSTING THE HEADTUBE ANGLE

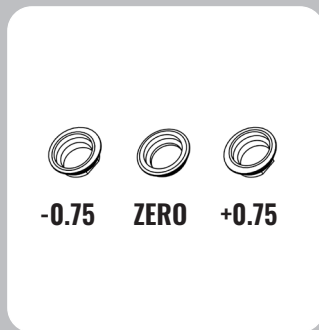
The Alpine Trail E bike features an adjustable headtube angle which can be changed by swapping the upper headset cup. The factory setting is the ZERO offset cup and is set to 63.5 degrees. Steeper headtube angle (-0.75) offers increased agility for climbing and tighter/flatter trails, and a slacker headtube angle (+0.75) offers increased stability for descending. To change the headtube angle by +/- 0.75 (64.25 or 62.75) degrees, follow the steps below.

1. Use a 4 mm hex wrench to remove the stem bolts. Use a 5 mm hex wrench to remove the top cap bolt. Remove the stem, spacers, top cap, and upper bearing. Remove the ZERO upper headset cup.
2. Note the laser etched -0.75 and +0.75. The marking that is pointing to the front of the bike indicates the headtube angle adjustment.
3. Select and install your preferred upper headset cup.
4. Reinstall the other headset parts in the correct order and tighten the headset compression bolt (3-4 N•m) and then align the stem and tighten the stem bolts to 5-6 N•m (see stem for exact torque recommendations). Make sure the assembly is aligned and all parts are in place. Check the headset for play. If play exists, do not ride the bicycle and contact your local Marin dealer.

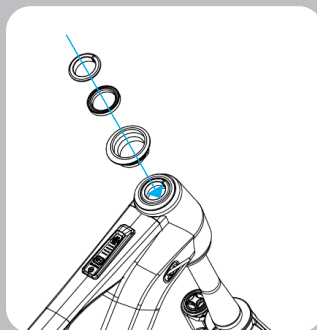
1



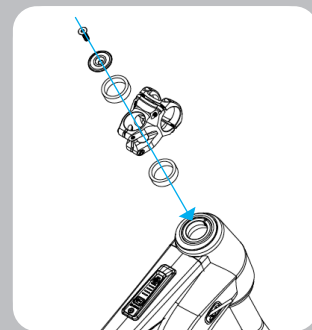
2



3



4

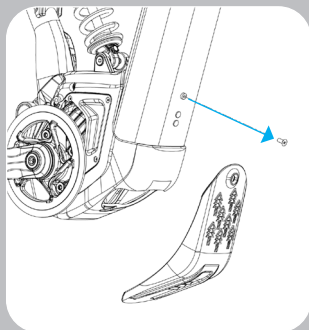


BATTERY REMOVAL & INSTALLATION

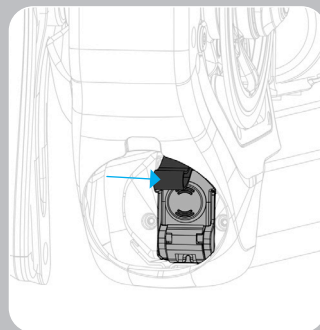
The battery can be charged on the bike without removal. However, you may need to bring the battery indoors to charge without the bike, or for storage during cold months. Battery removal and installation can be done with the bike on its side, or upside down. When turning the bike upside down, lower the seat and be very careful not to damage the mini-remote on the handlebar. You may wish to loosen the mini-remote bolt slightly and rotate it out of the way. You can also use blocks under the handlebars in order to create space for the mini-remote to not contact the ground.

1. Use a 3 mm hex wrench to remove the bolt from the downtube cover. Pull down on the downtube cover to release it from the bike.
2. Pull the loop and release the lever, at this time the battery will begin to slide out.
3. Remove the battery from the bike.
4. To reinstall the battery, press the lever down to secure it back onto the battery. Then, slide the battery back in along the rails on the bottom surface of the downtube. Use a 3 mm hex wrench to reinstall the bolt and downtube cover.

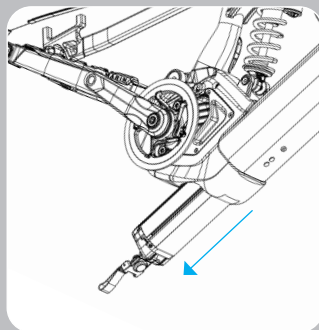
1



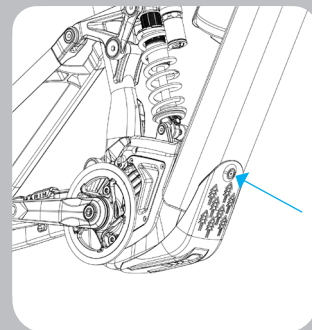
2



3



4

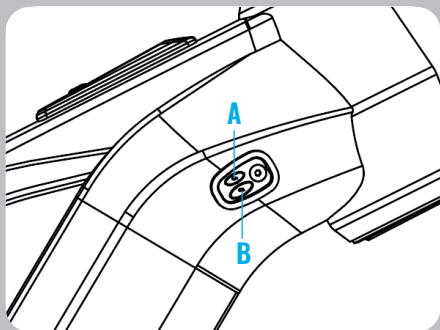


CABLE ROUTING & RUBBER GROMMETS

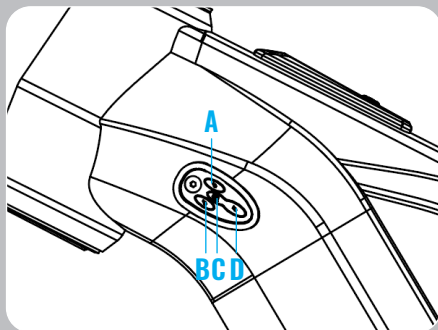
All cables and housing travel through Marin's Series 4 grommets, which are sealed with a rubber membrane to keep out the elements. On the next page is a diagram to help guide you on how the routing is designed through the frame. We recommend only trained, professional bicycle mechanics complete this installation.

1. Drive side grommets: 4 mm/dropper or shifting cable port (Figure 1A), 5 mm/brake line port (Figure 1B).
2. Non-drive side grommets: 4 mm/dropper or shifting cable port (Figure 2A and Figure 2B), display or light cable (Figure 2A), 5 mm/brake line port (Figure 2D).
3. The rubber gasket keeps things rattle-free and protects the frame.

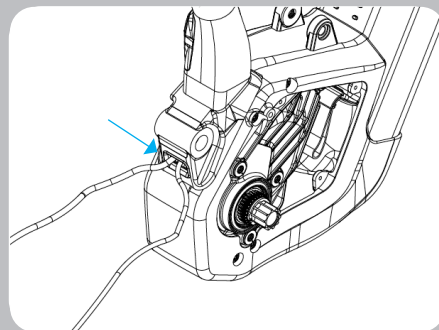
1



2

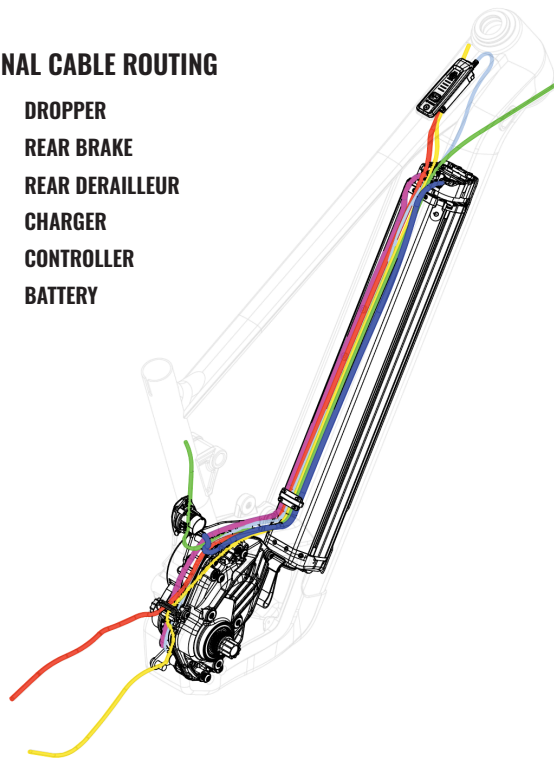


3



INTERNAL CABLE ROUTING

-  DROPPER
-  REAR BRAKE
-  REAR DERAILLEUR
-  CHARGER
-  CONTROLLER
-  BATTERY



FRAME TECHNICAL SPECIFICATIONS

FORK AXLE TO CROWN

OE Specification 586 mm

MAX 596 mm

*NOT dual crown compatible

SHOCK INFO

Eye to Eye 205 mm

Stroke 65 mm

SHOCK HARDWARE

Upper Trunnion

Lower 30 mm x M8

REAR WHEEL TRAVEL

160 mm

TIRE COMPATIBILITY

Front 29x2.6" MAX TIRE
COMPATIBILITY

Rear 2.6" (27.5" stock or 29")

HEADSET SPECIFICATION

FSA Number 76 Marin Specific Design (see
page 10 for Marin part number)

Top Bearing FSA MR122

Bottom Bearing FSA MR127

CHAINLINE

52 55 mm

SEAT COLLAR DIAMETER

38.9 mm

REAR BRAKE MOUNT

Post Mount 180 mm

Max Rotor Size 220 mm

REAR AXLE

148x12 mm

174 mm length, M12 x 1.0 Pitch

BEARING SPECIFICATION QUANTITY

9602 15x28x7 mm 4

6802 15x24x5 mm 4

3802 15x24x7 mm 2

6801 12x24x6 mm 2

SEATPOST DIAMETER

34.9 mm

SEAT TUBE INSERTION DEPTH

S 270 mm

M 290 mm

L 300 mm

XL 320 mm

BOSCH E PARTS

Speed Sensor Rim Magnet for
Smart System

Motor Mount BDU37, CX

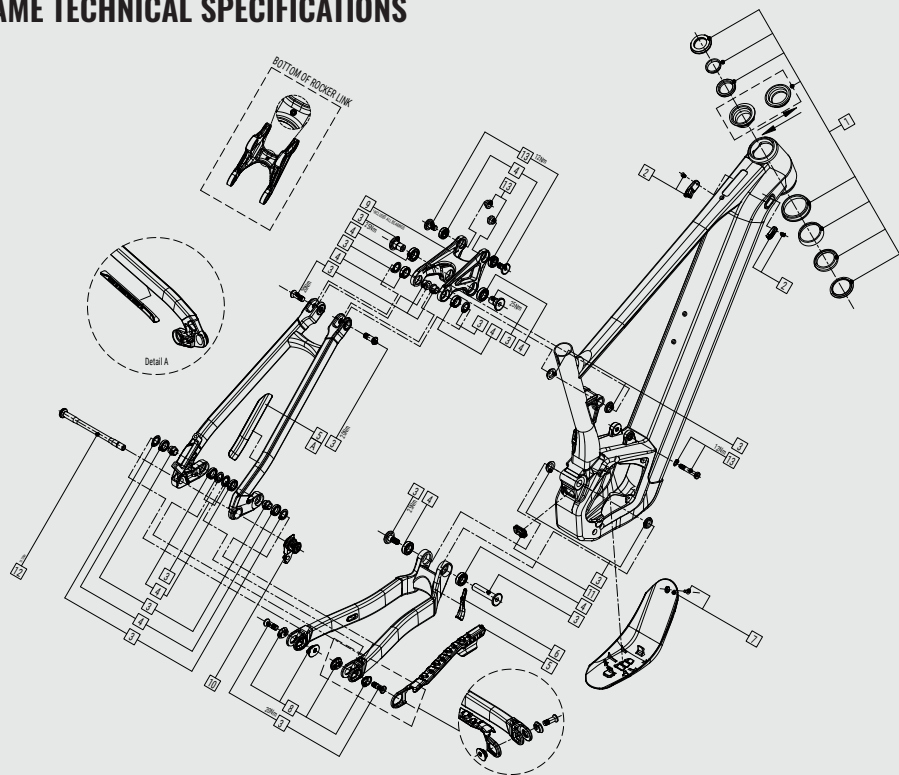
Battery Compatibility PT750

Battery Mount PT750 Horizontal
RailCharge Port COBS connector
with V6 cover holderPower Switch BRC3100 Systems
Controller

Assist Mode Switch Mini-Remote

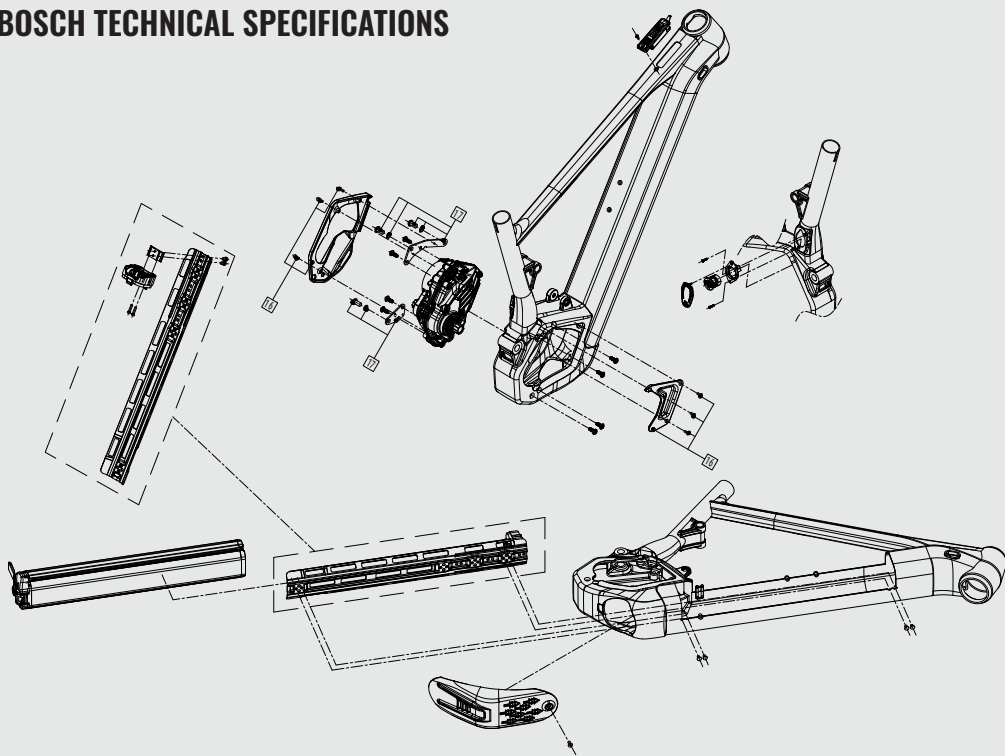
Charger 2A

FRAME TECHNICAL SPECIFICATIONS



ITEM #	ARTICLE #	DESCRIPTION
1	738409	Adjustable Headset Assembly
2	738410	Series 4 Cable Grommet Kit
3	738400	Pivot Bolt Kit J
4	738244	Bearing Kit F
5	738403	Chainstay & Seatstay Protector
6	738405	Chainstay Yoke Cover, Stick-On, Alpine Trail E Bosch
7	738408	Skid Plate, Alpine Trail E Bosch
8	738245	Chainstay Flip Chip Assembly
9	739301	Rocker Link, Alpine Trail E Bosch
10	AC-DRHG-MTB-A1	SRAM UDH
11	739317	Cable Grommet for FT Exit Hole
12	736031	Bolt On Axle Kit 148x12mm, 174MM Length, Tapered Head
13	738243	Shock Bolt Kit I

BOSCH TECHNICAL SPECIFICATIONS



ITEM #	ARTICLE #	DESCRIPTION
16	739679	Motor Side Covers L & R, with Bolts
17	739679	ATE Bosch CX Mounting Brackets, bolts included

MARIN CUSTOMER SUPPORT

Your local Marin dealer is your best resource for service and repairs, but if you need to contact us directly, visit marinbikes.com/about/contact-us

Warranty

Visit marinbikes.com/support