

RADIOSTATION

MALABAR

EN OVERIGE STATIONS OP DE
BANDOENGSCHE HOOGVLAKTE

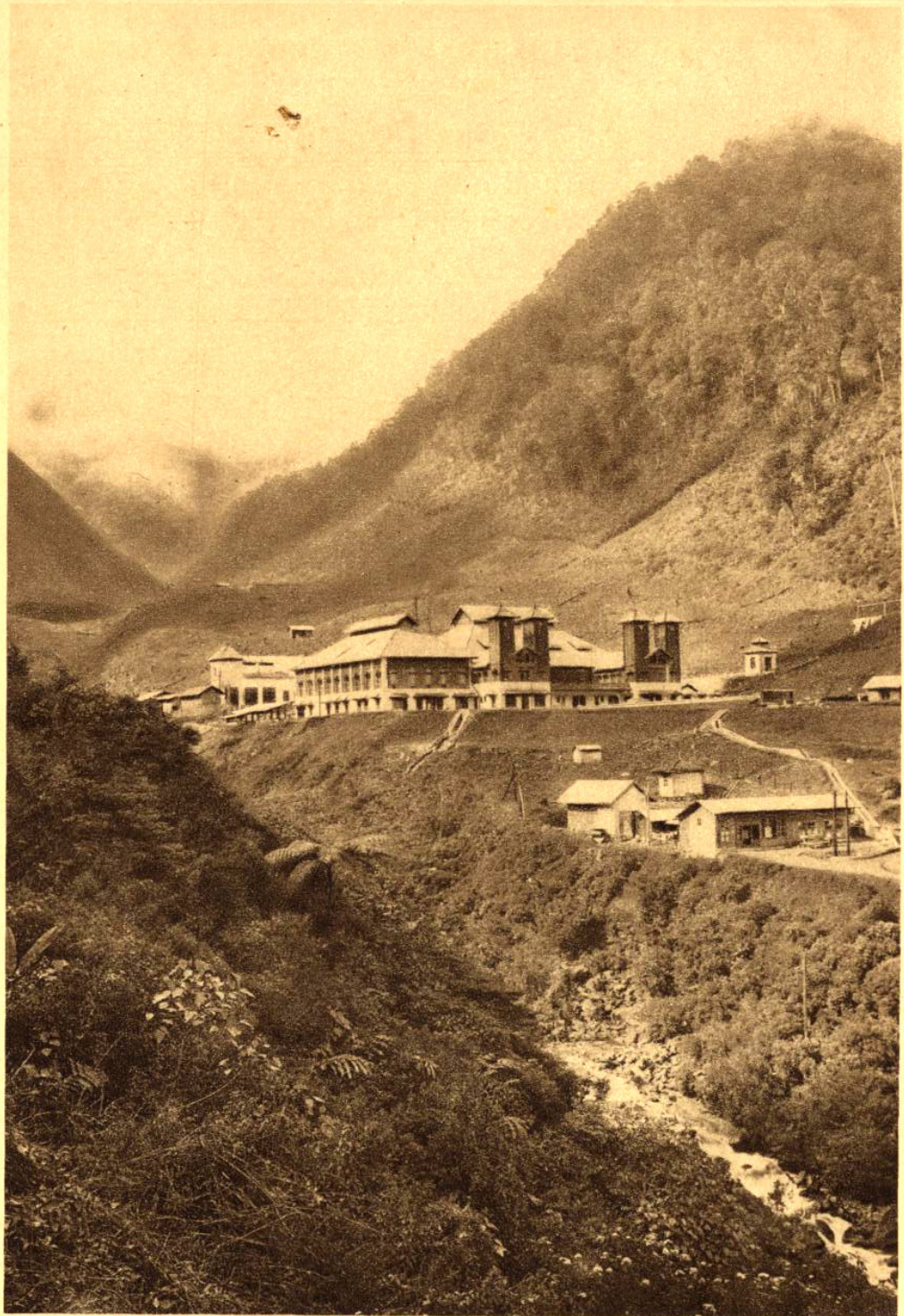
GOUVERNEMENTS POST - TELEGRAAF EN TELEFOONDIENTST
IN
NEDERLANDSCH-INDIË

BANDOENG JUNI 1928.



1. Département van Gouvernements Bedrijven.

Department of Government Industries.



2. Panorama van het Radiozend-
station Malabar.

General View of the Transmitting
station Malabar.



3. Panorama van het Station Malabar.

General View of the Station Malabar.



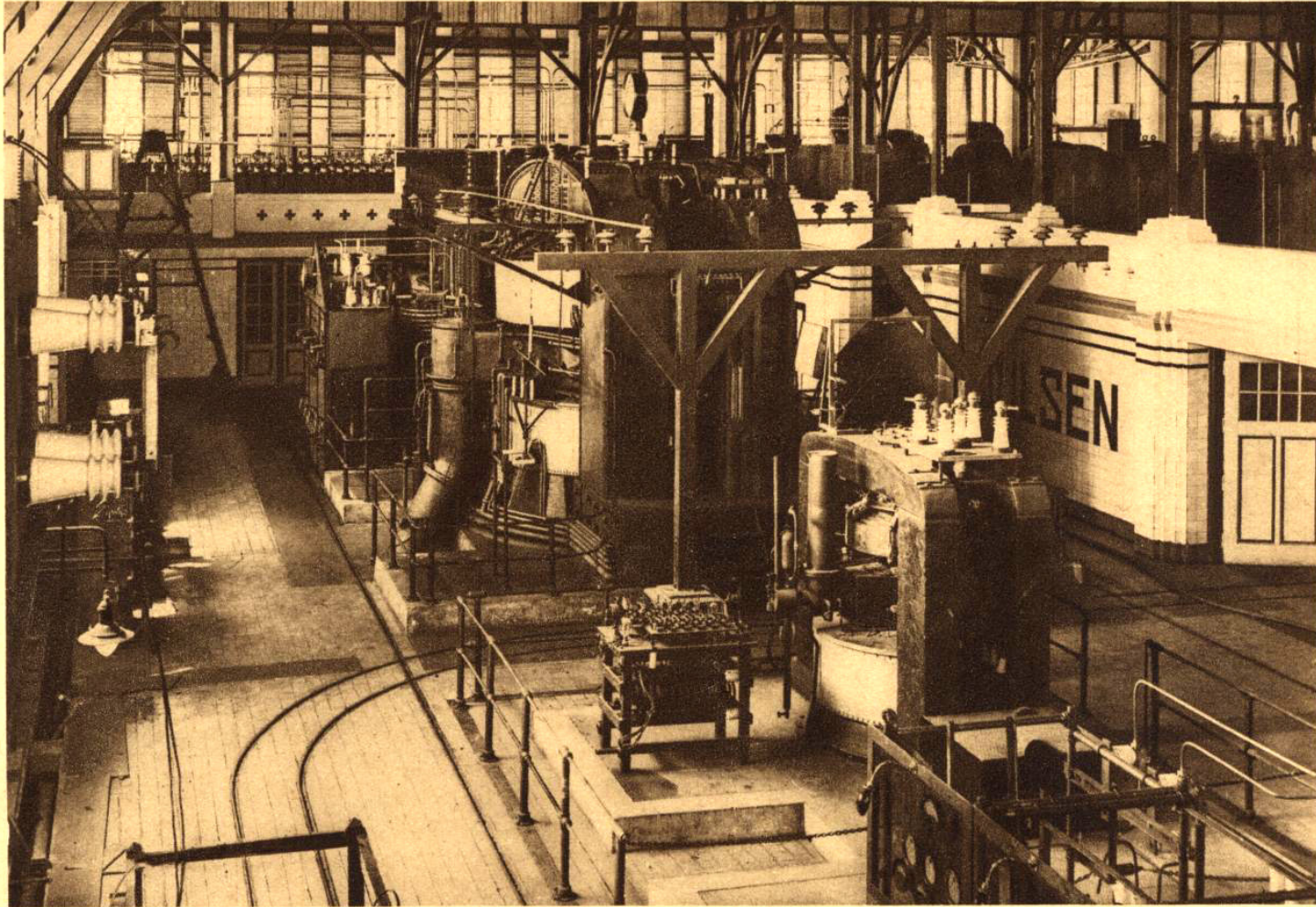
4. Gebouw van het station Malabar.

Building of the station Malabar.



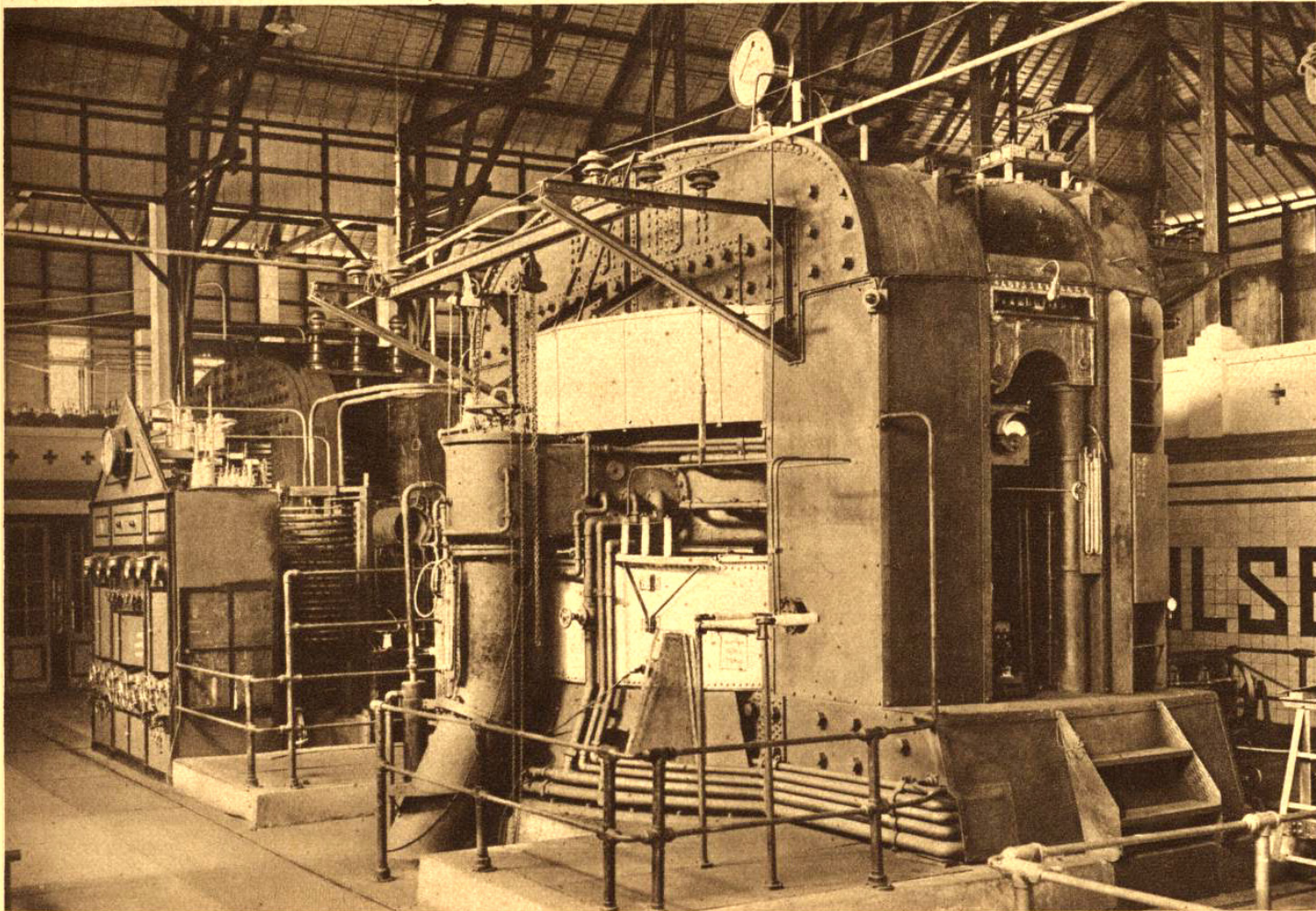
5. Voorgevel gebouw Malabar met
gezicht op antennes.

Front of the building at Malabar
with view of aerials.



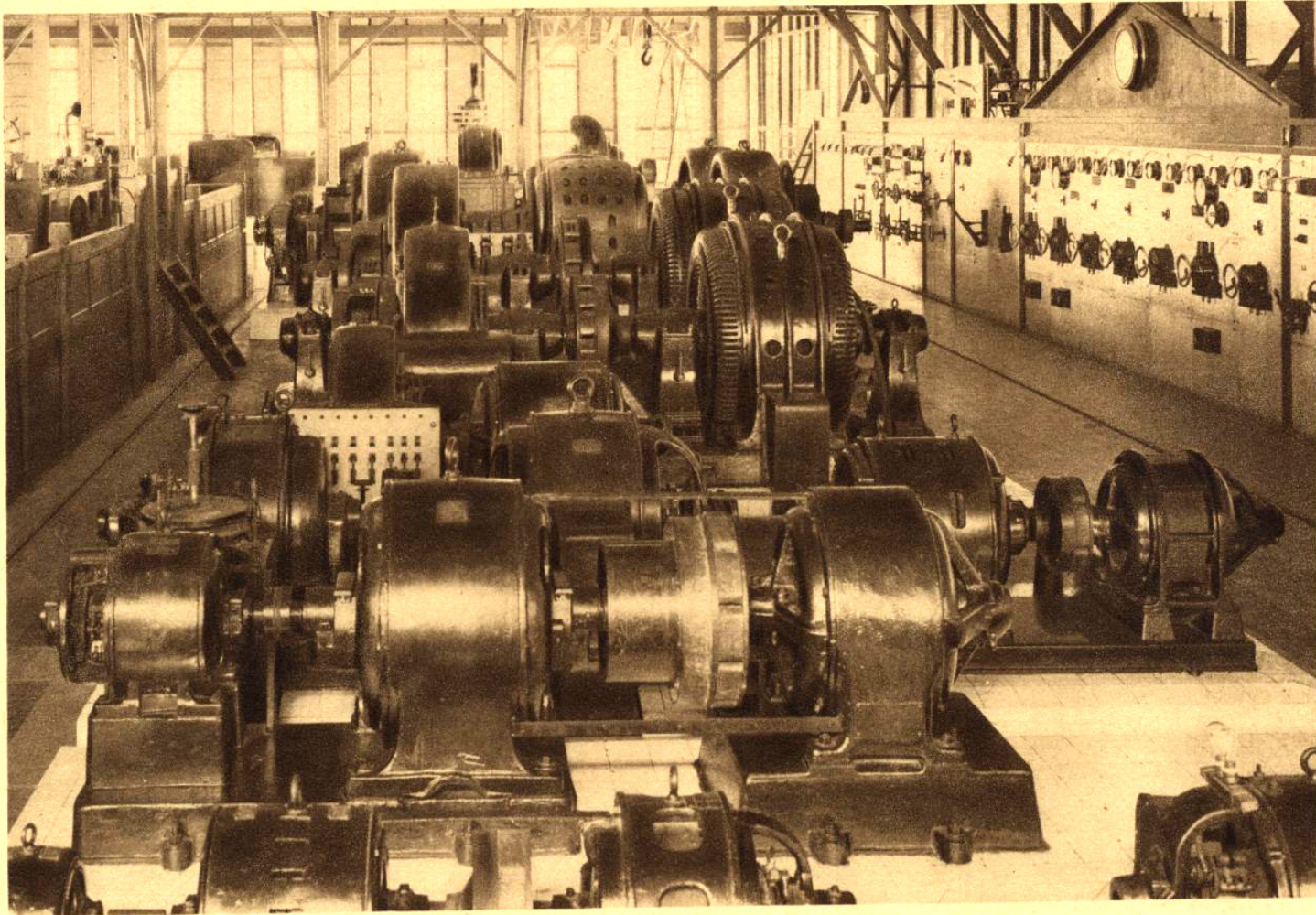
6. Zenderzaal te Malabar. Gezicht op de boogzenders van 200 en 2400 KW

Transmitting Hall at Malabar. View of the arc transmitters of 200 and 2400 KW



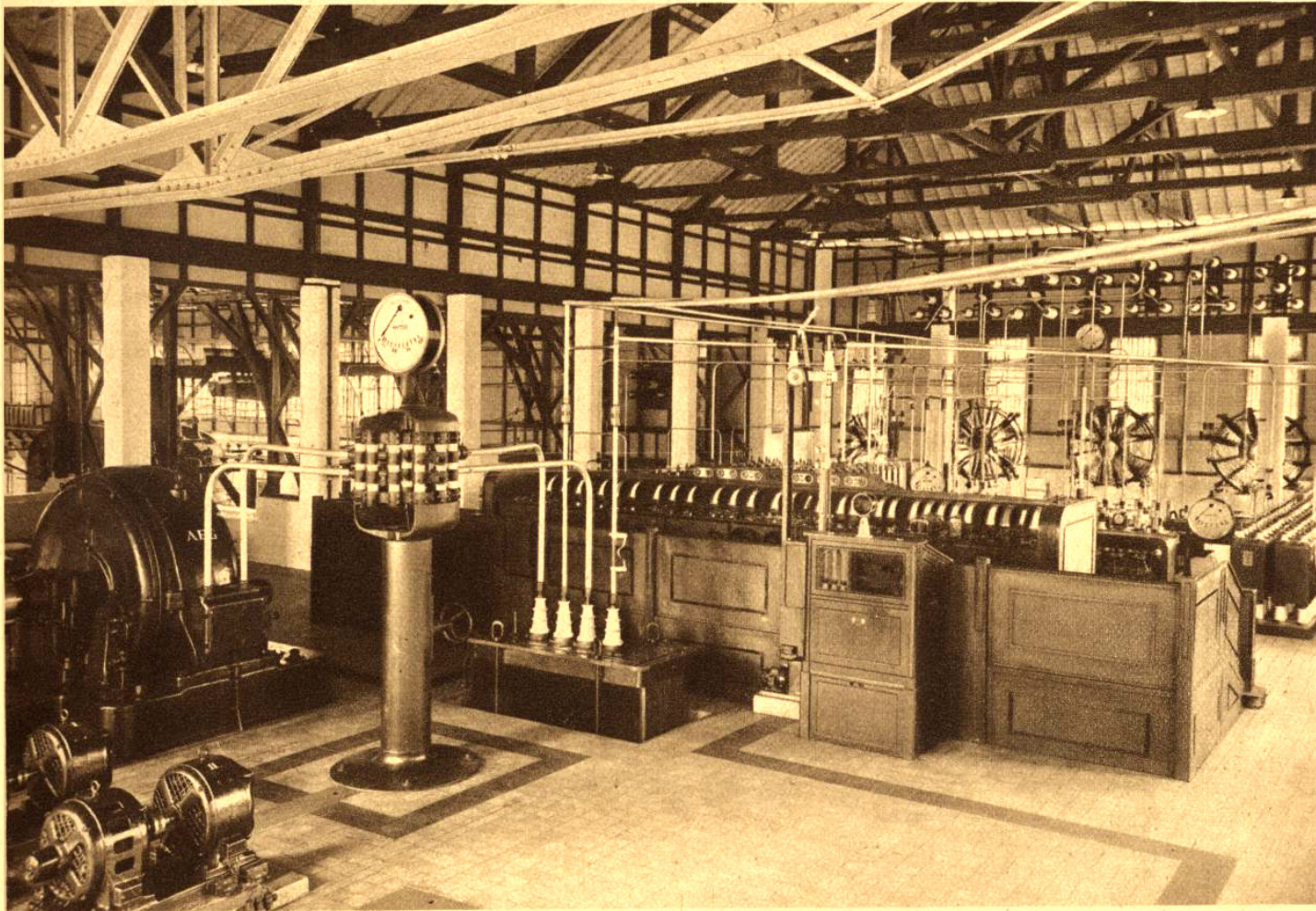
7. Zenderzaal te Malabar. Gezicht op de twee groote boogzenders van 2400 K.W.

Transmitting Hall at Malabar. View of the two great arc transmitters of 2400 K.W.



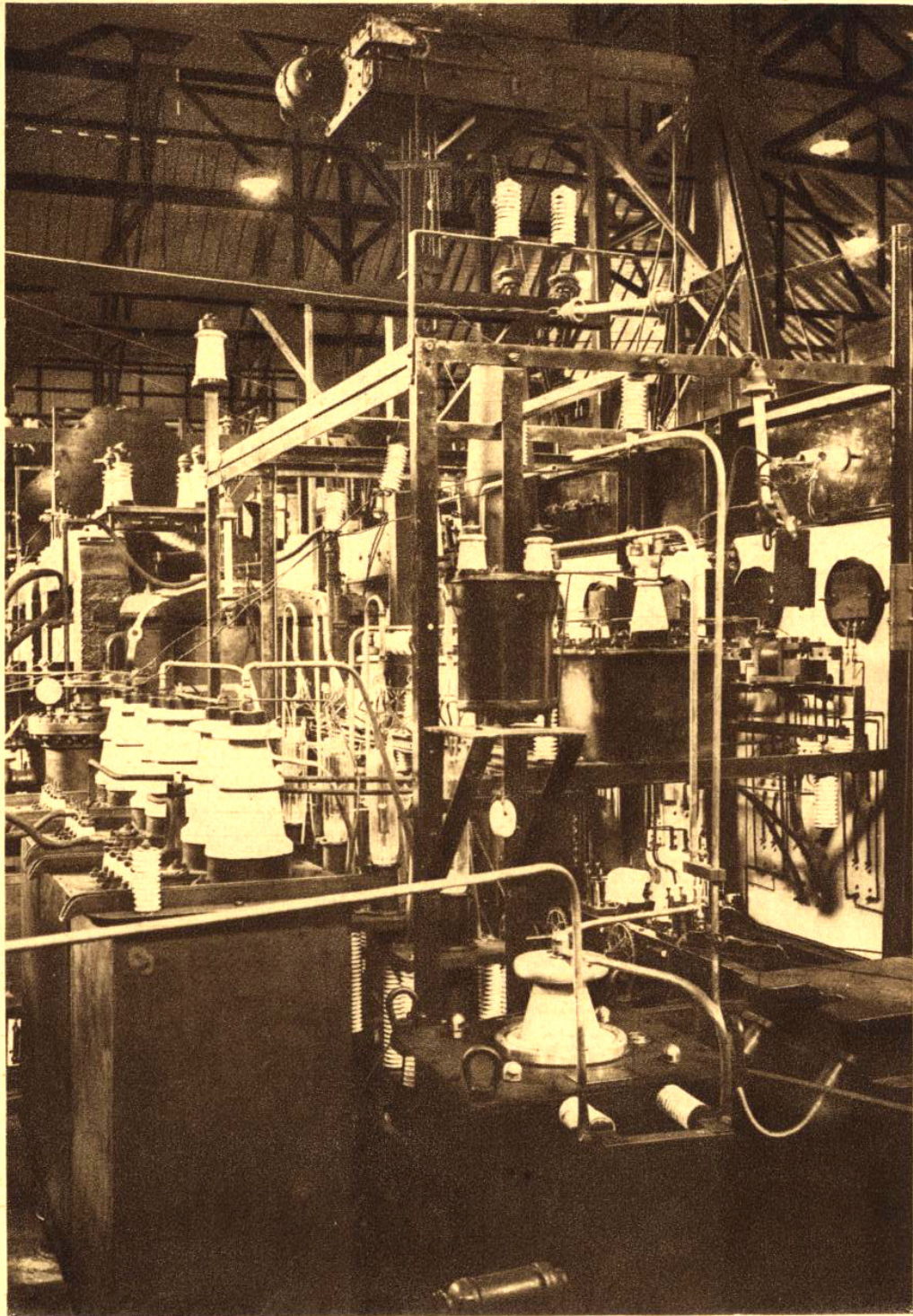
8. Machinegalerij met bedieningstafel en schakelbord te Malabar.

Machine gallery with control tables and switchboard at Malabar.



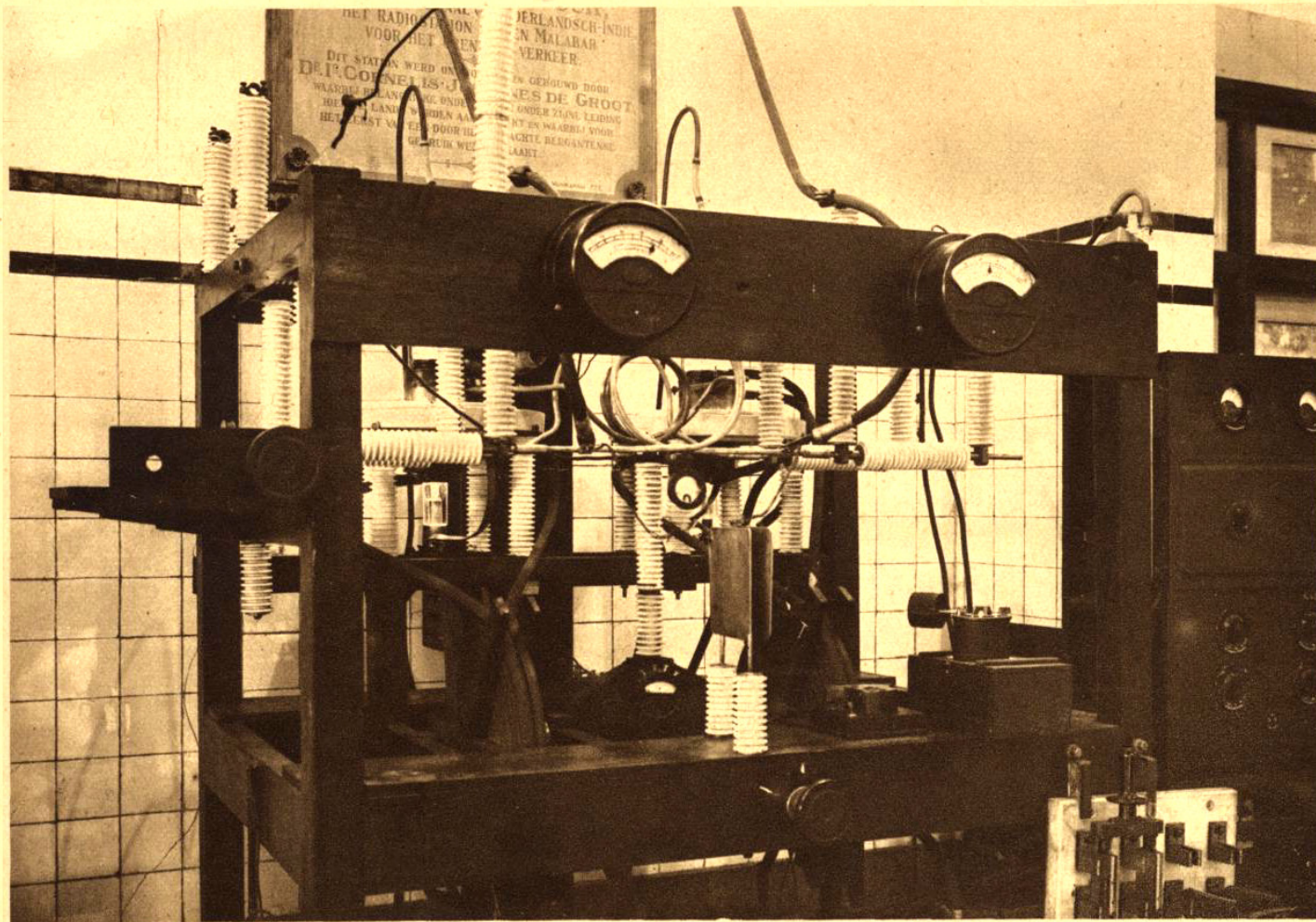
9. Telefunken Machinezender te Malabar.

Telefunken H.F. alternator Transmitter at Malabar.



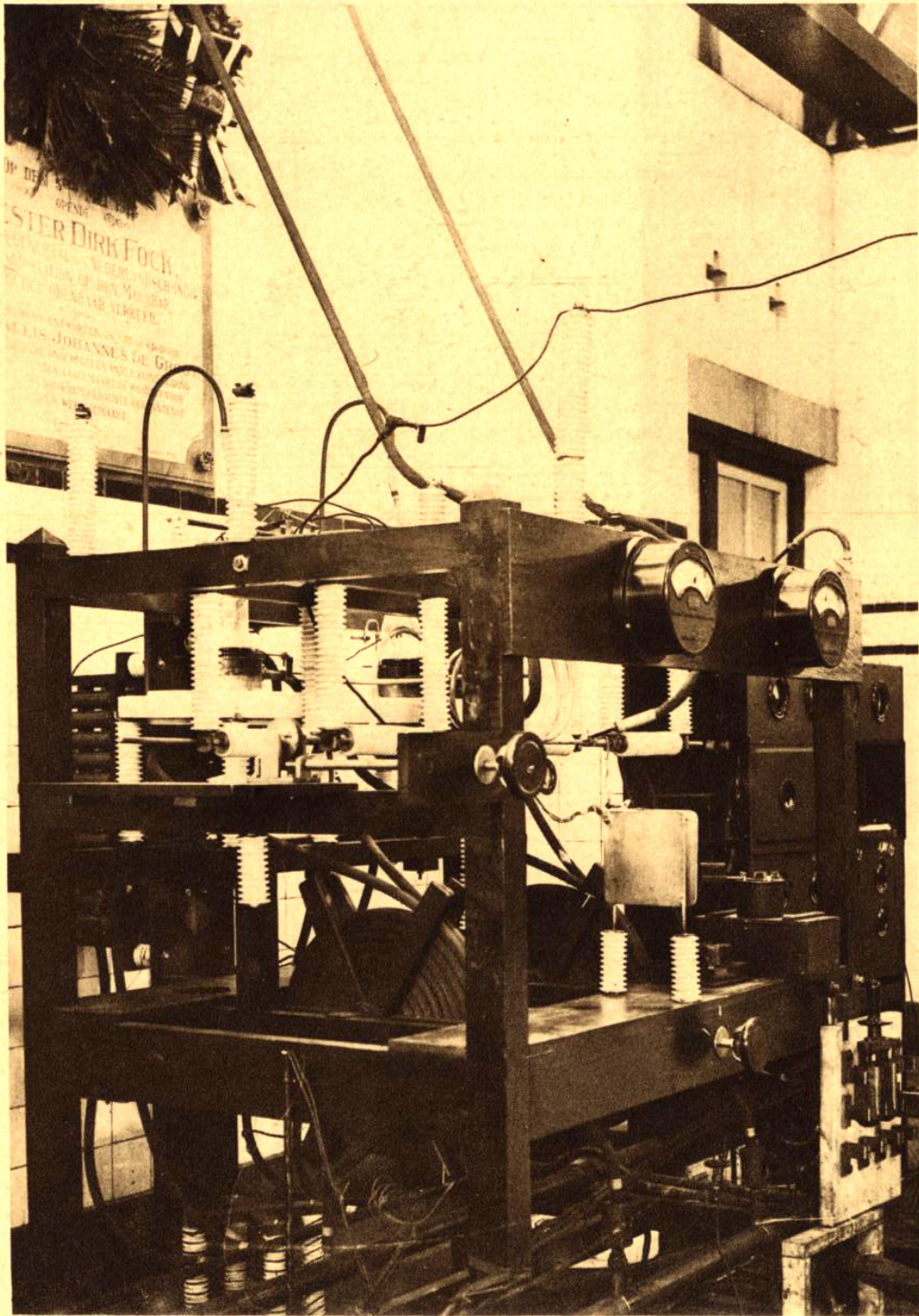
10. Gezicht in de Zenderzaal
te Malabar.

View in the transmitting Hall
at Malabar.



11. Korte-golfzender Anh. (van voren gezien.)

Short-wave transmitter Anh. at Malabar (front view.)



12. Korte - golfzender Anh. (van ter zijde gezien.)

Short - wave transmitter Anh. (side-view.)



13. Woonhuizen voor het personeel te Malabar. (Op den achtergrond de Bandoengsche Hoogvlakte)

Dwellings for the Chief and the officials at Malabar. (On the background the Plateau of Bandoeng)



14. Woonhuizen te Malabar. (Op den achtergrond de bergkloof)

Dwellings at Malabar. (On the back-ground the cleft of mountain)



15. Panorama van het radiostation Tjililin.

General View of the Transmitting Station Tjililin.



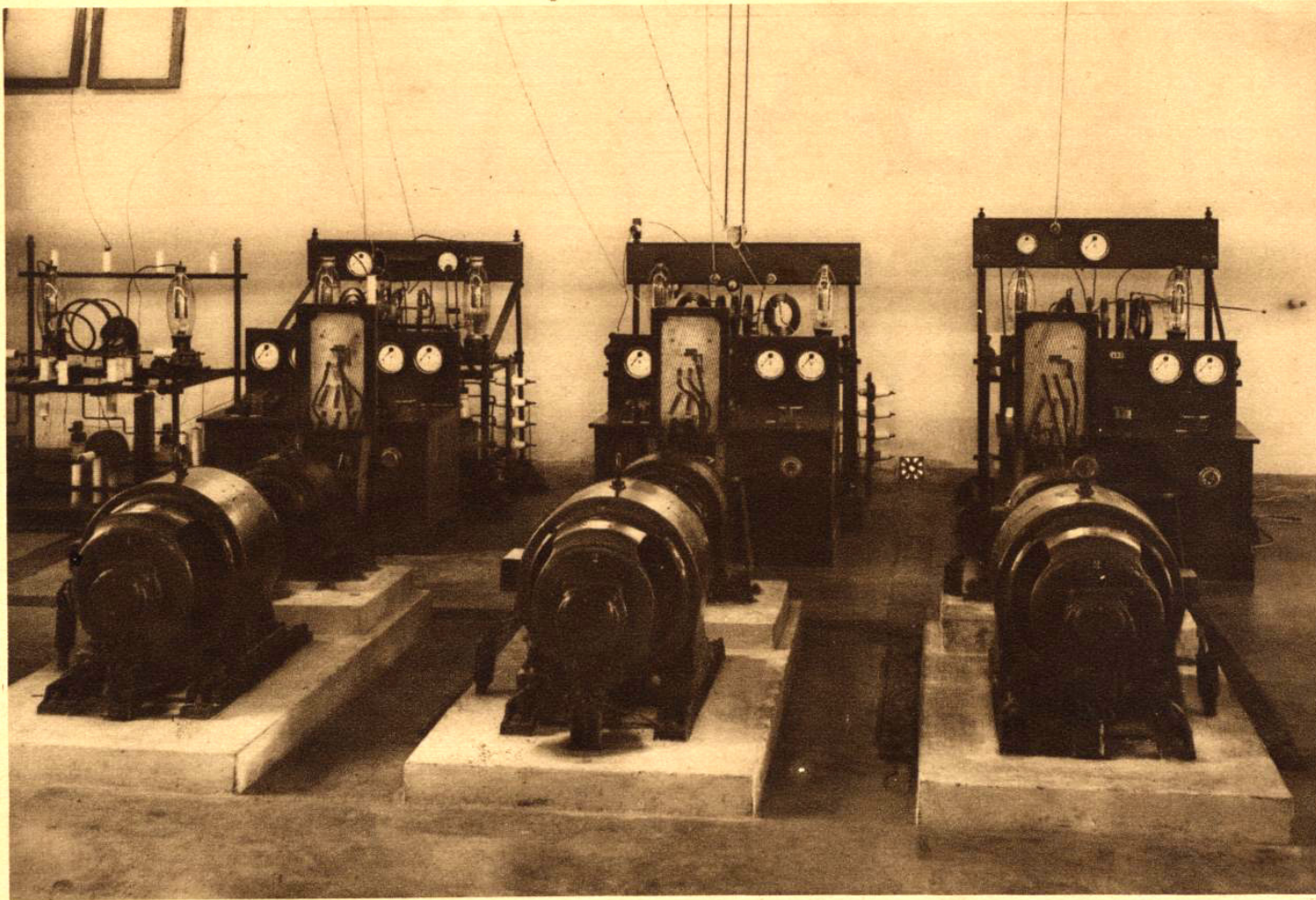
16. Gebouw van het radiostation Tjililin.

Building of the station Tjililin.



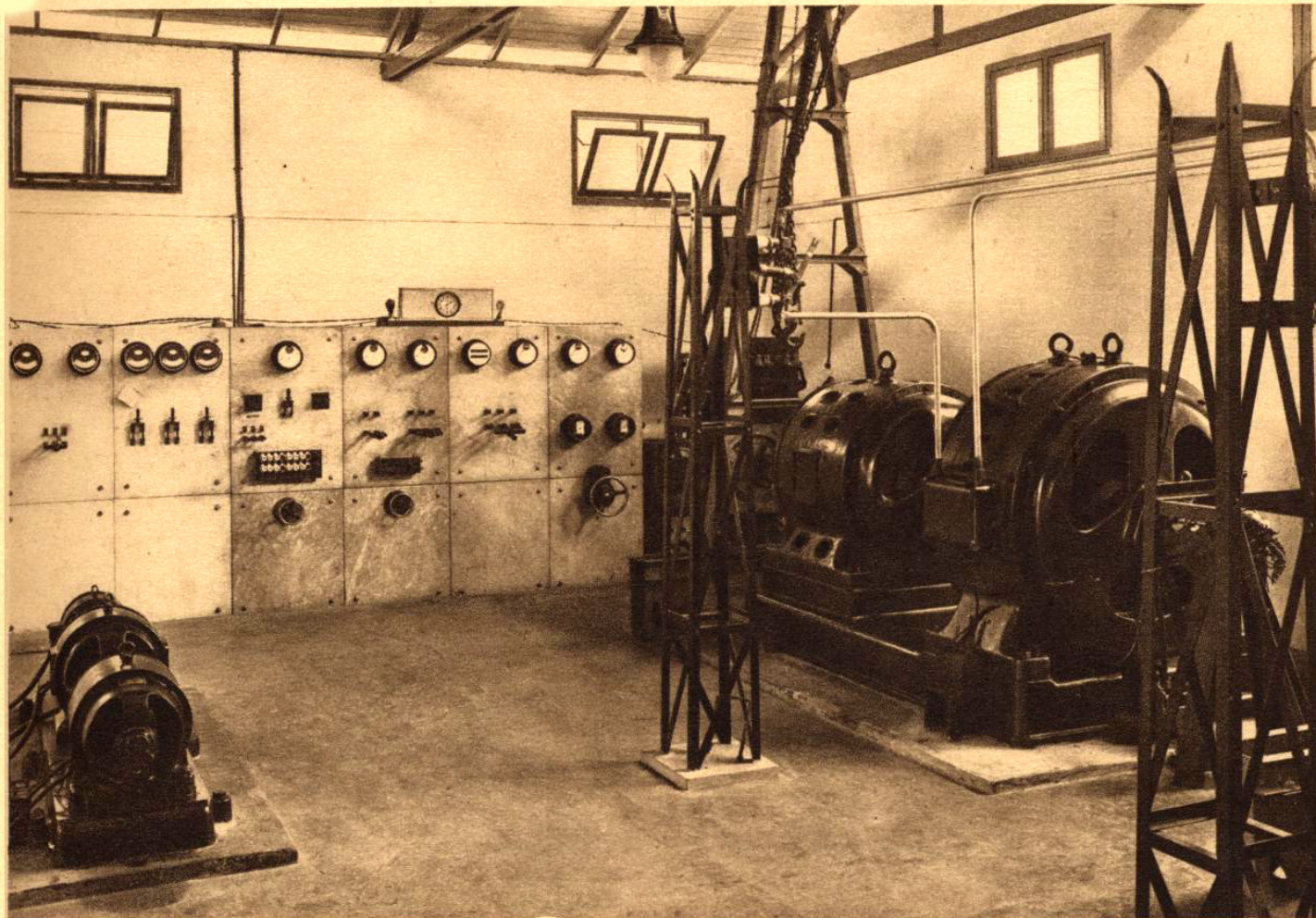
17. Zenderzaal te Tjililin.

Transmitting Hall at Tjililin.



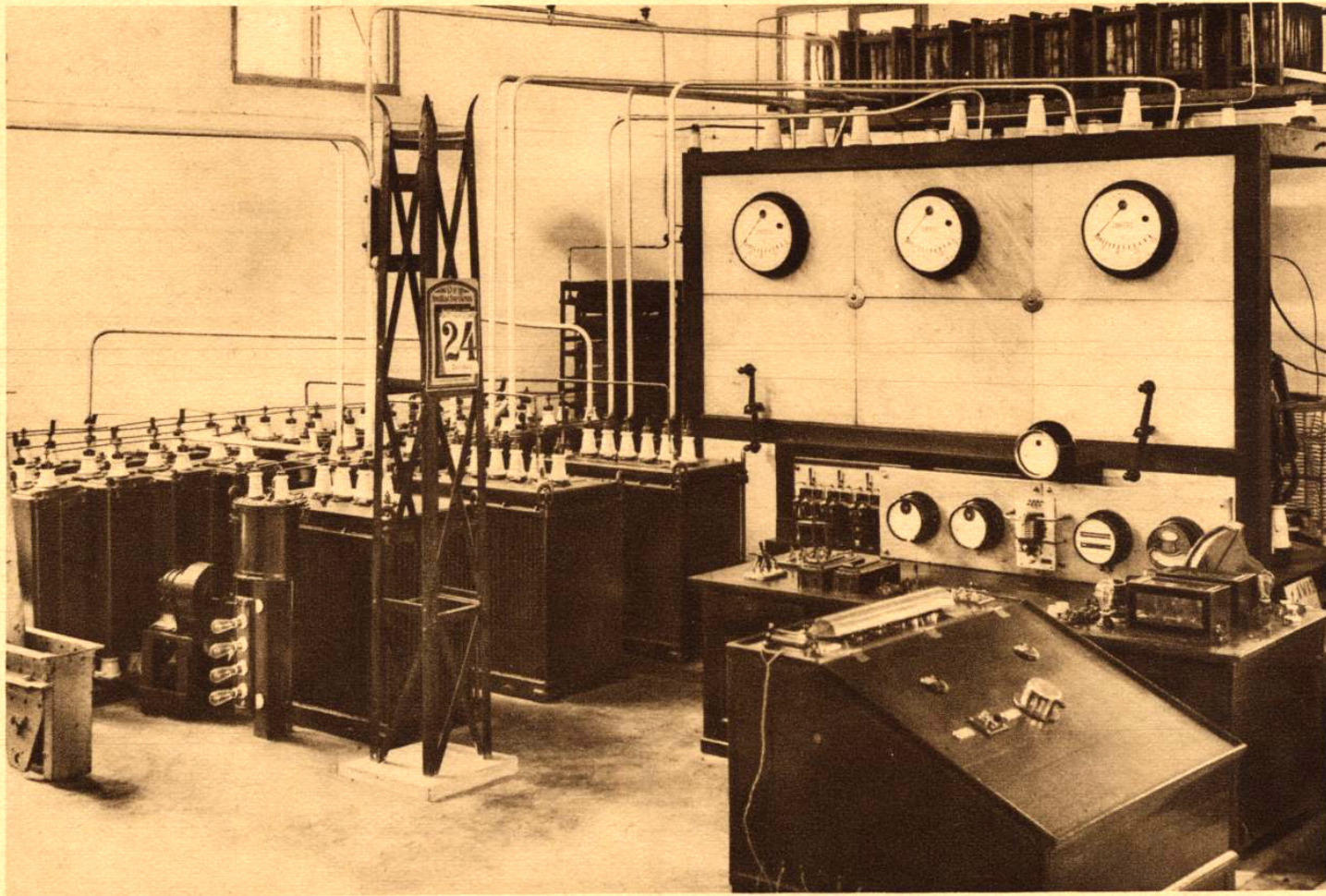
18. Korte-golfzenders met machines te Tjililin.

Short-wave transmitters with machines at Tjililin.



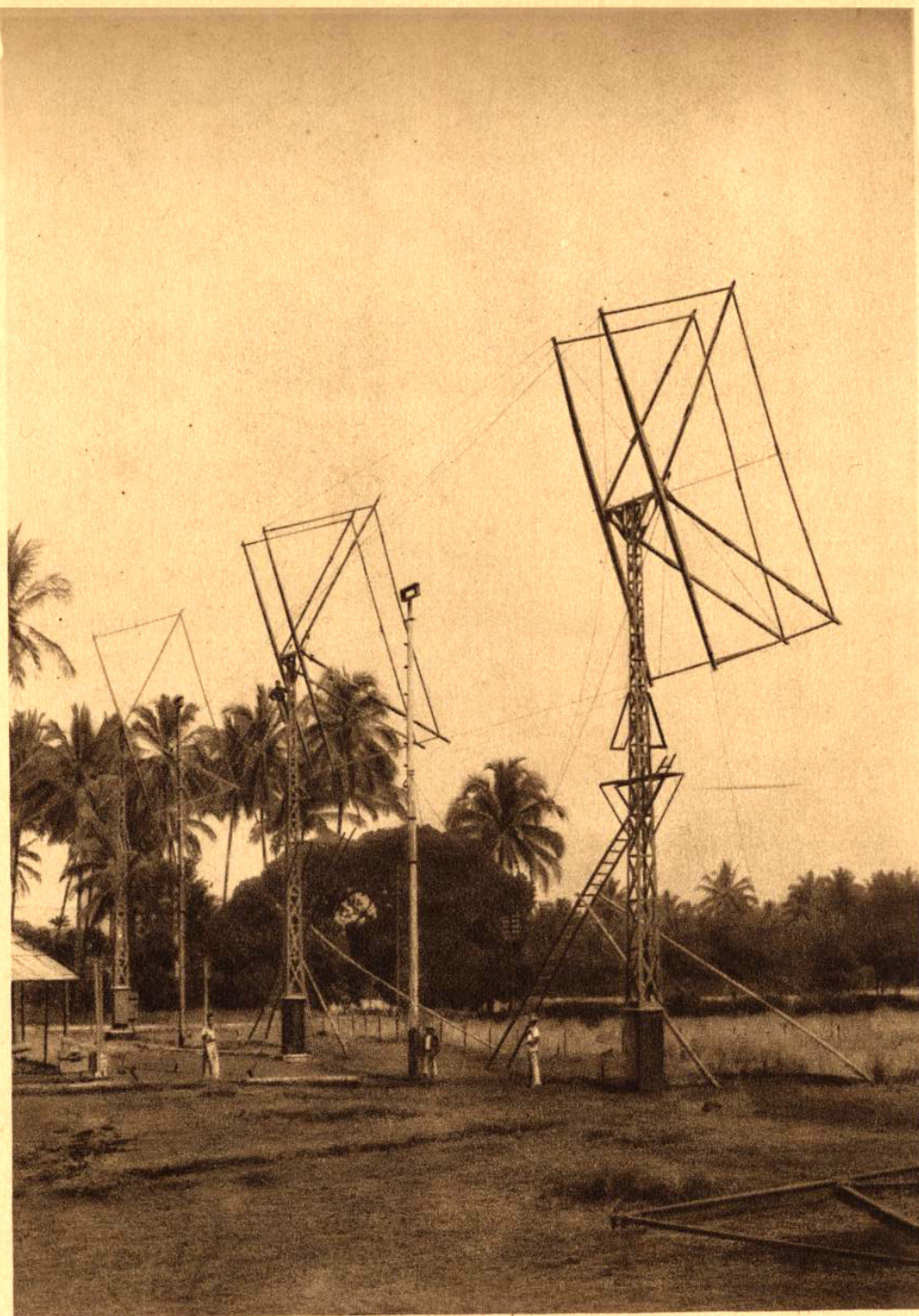
19. Telefunken h.f. Machine en schakelbord te Tjililin.

Telefunken h.f. alternator and Switchboard at Tjililin.



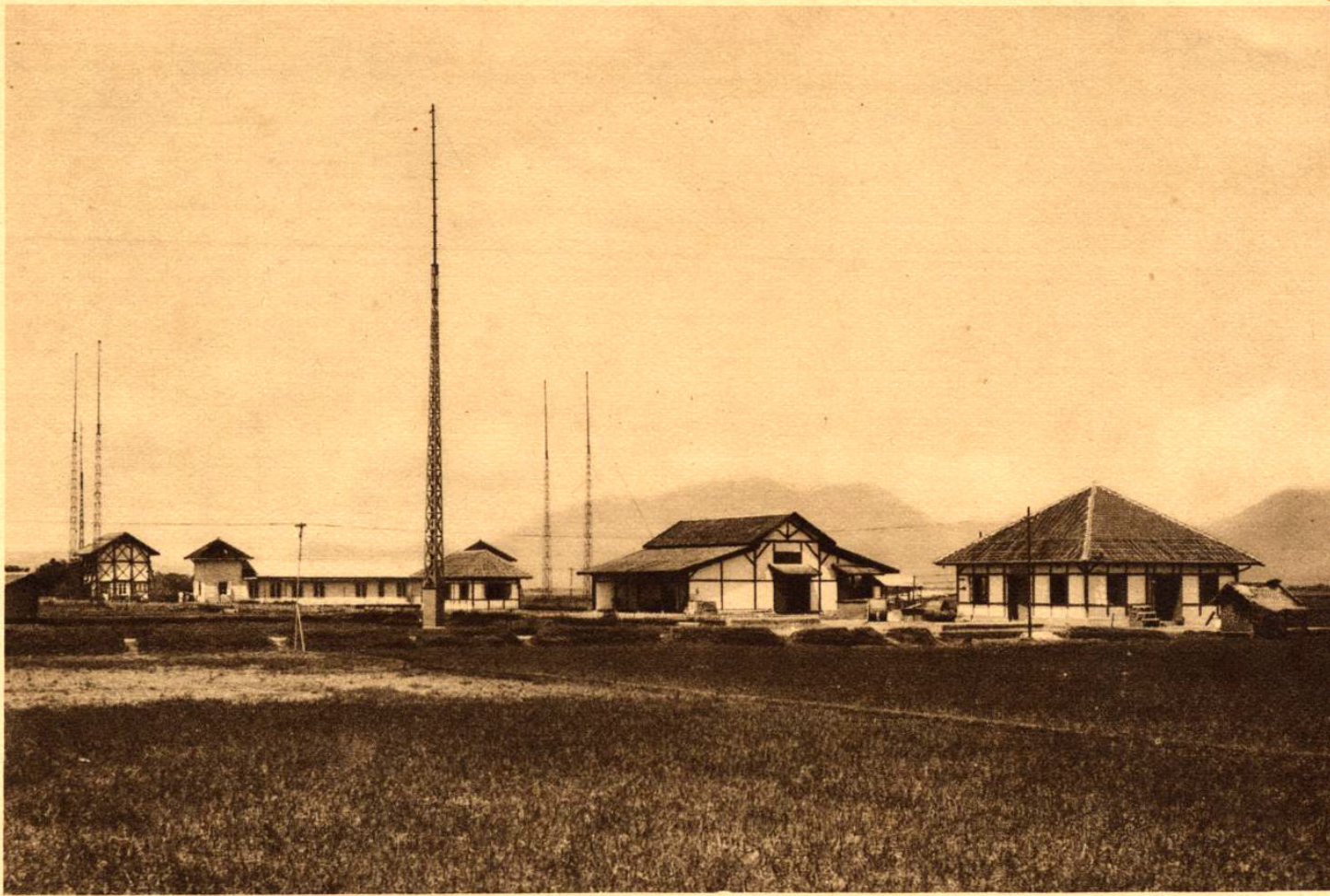
20. Telefunken machinezender te Tjililin.

Telefunken alternator transmitter at Tjililin.



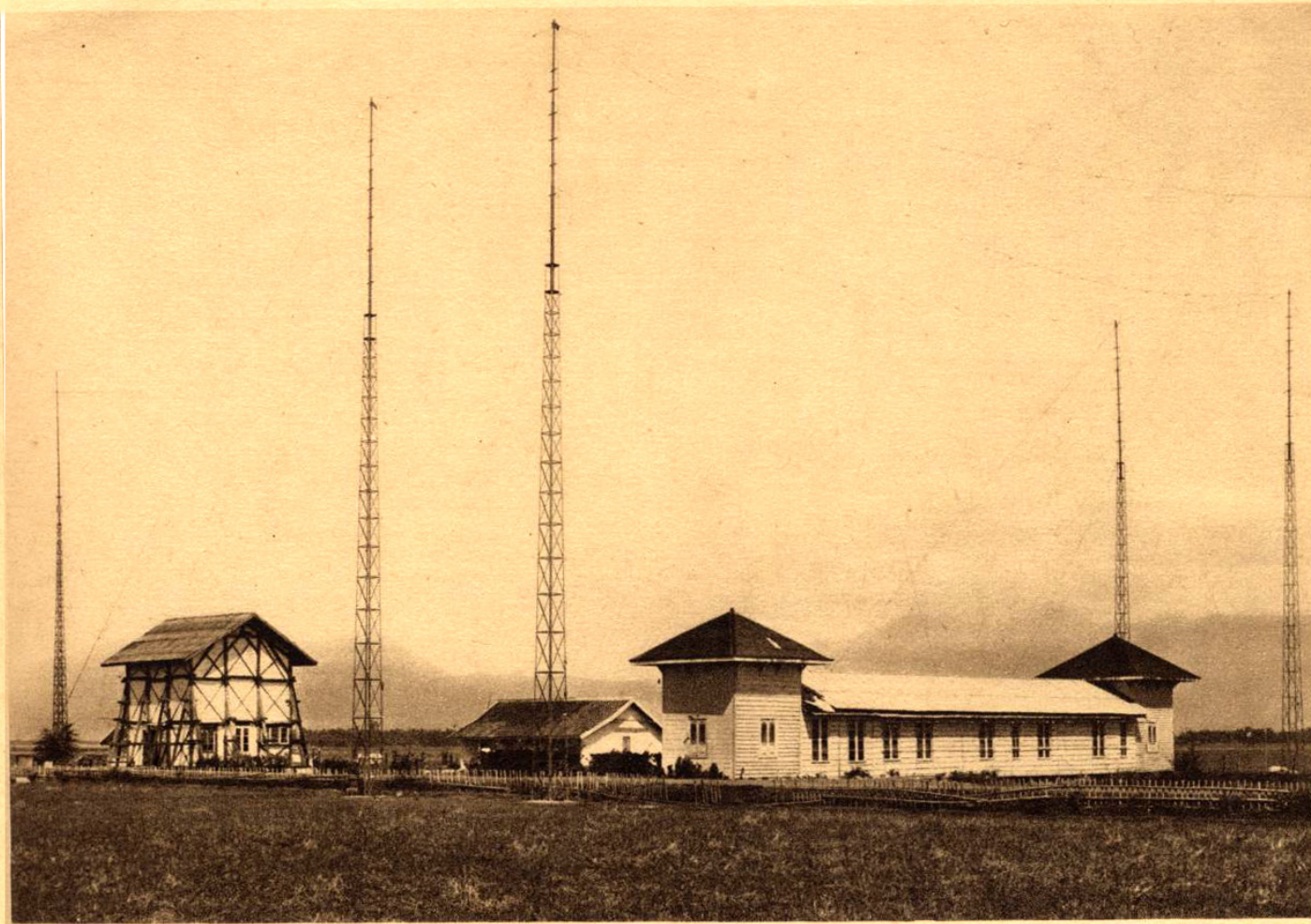
21, Radiostation Tjimindi.

Transmitting station at Tjimindi.



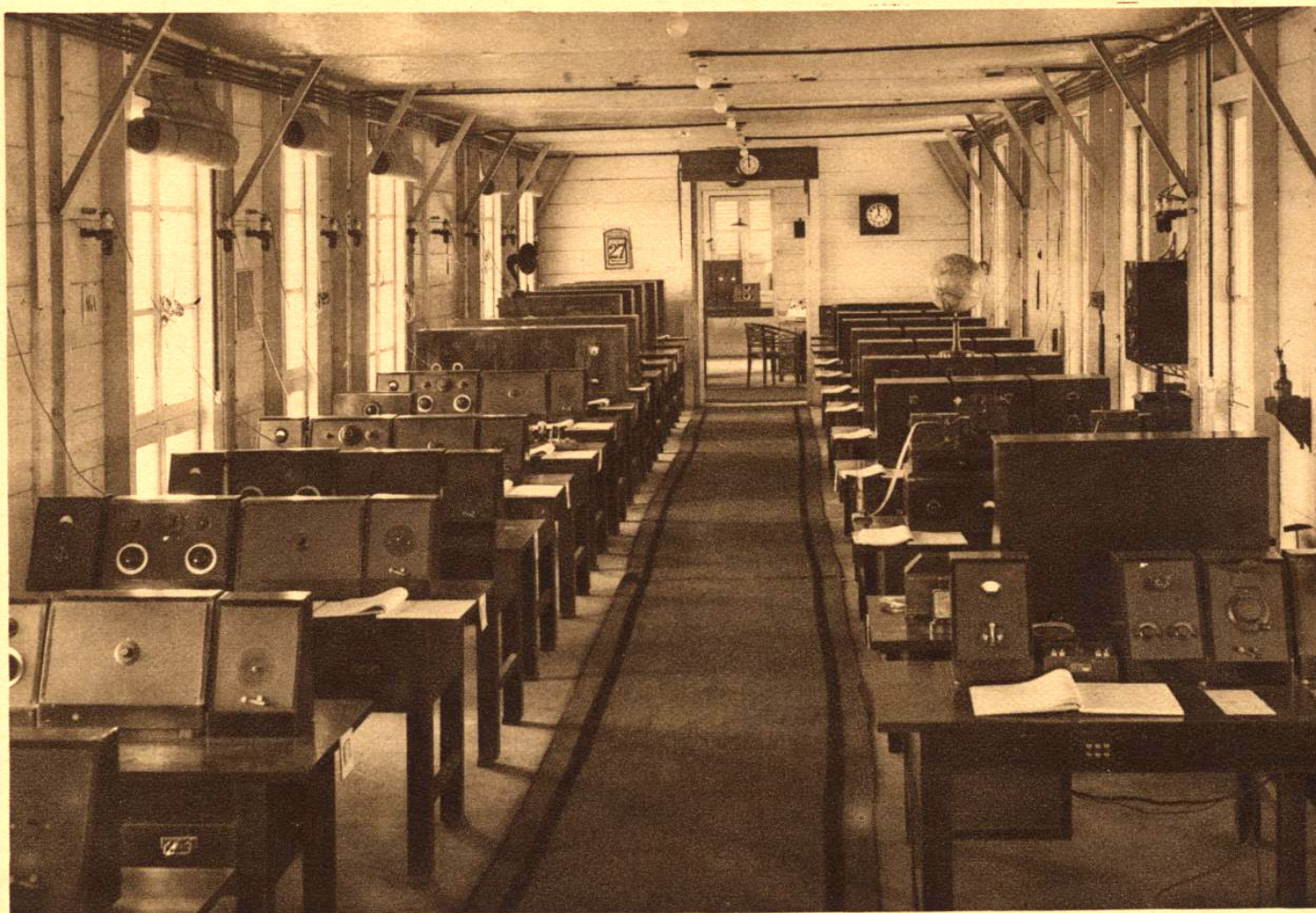
22. Gebouwen van het ontvangstation te Rantja-Ekek.

Buildings of the Receiving Station at Rantja-Ekek.



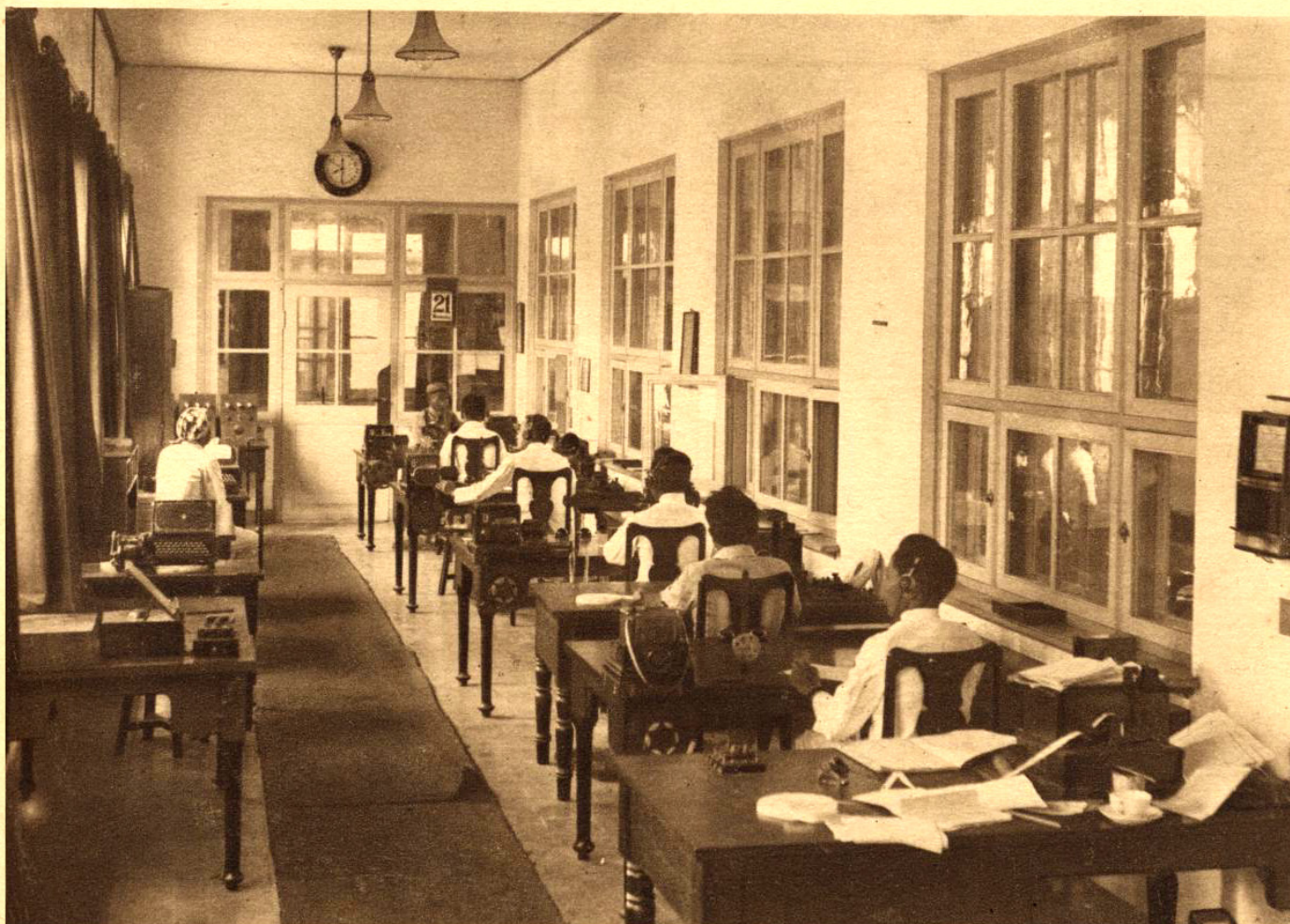
23. Gebouwen van het ontvangstation te Rantja Ekek.

Buildings of the Receiving Station at Rantja Ekek.



24. Zaal met ontvangtoestellen te Rantja-Ekek.

Hall with Receiving Installations at Rantja-Ekek.



25. Bedrijfscentrale te Bandoeng Zendafdeeling.

Radio central at Bandoeng. Transmitting part.



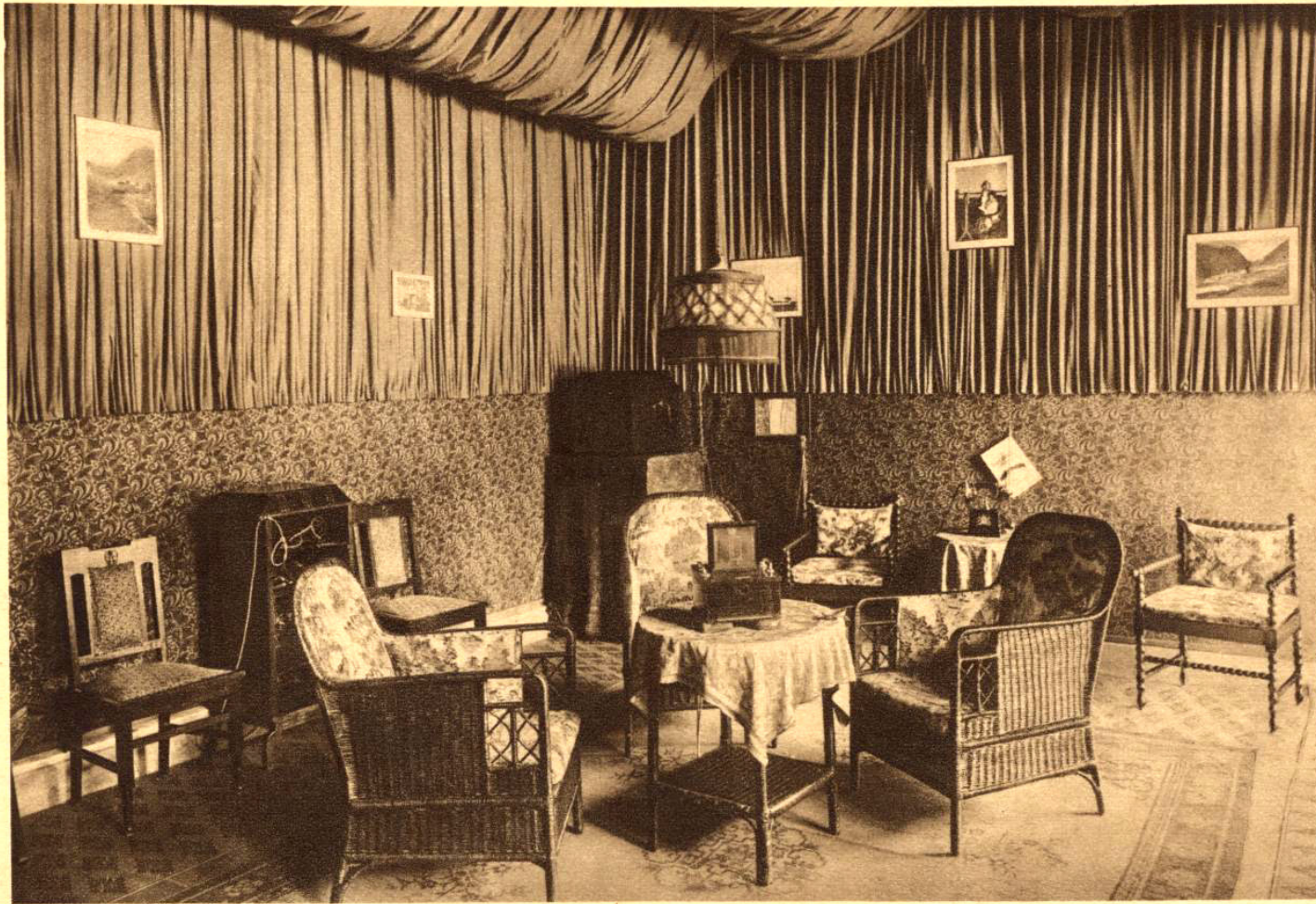
26. Bedrijfscentrale te Bandoeng. Ontvang afdeeling.

Radio central at Bandoeng Receiving part



27. Ingang van de Studio voor de
Radio-telefonie te Bandoeng.

Entrance of the Studio for Radio
Telephony at Bandoeng.



28. Studio.

Studio.



29. Zaal met instrumenten en plaats voor den omroeper.

Hall with the instruments and place for the announcer.



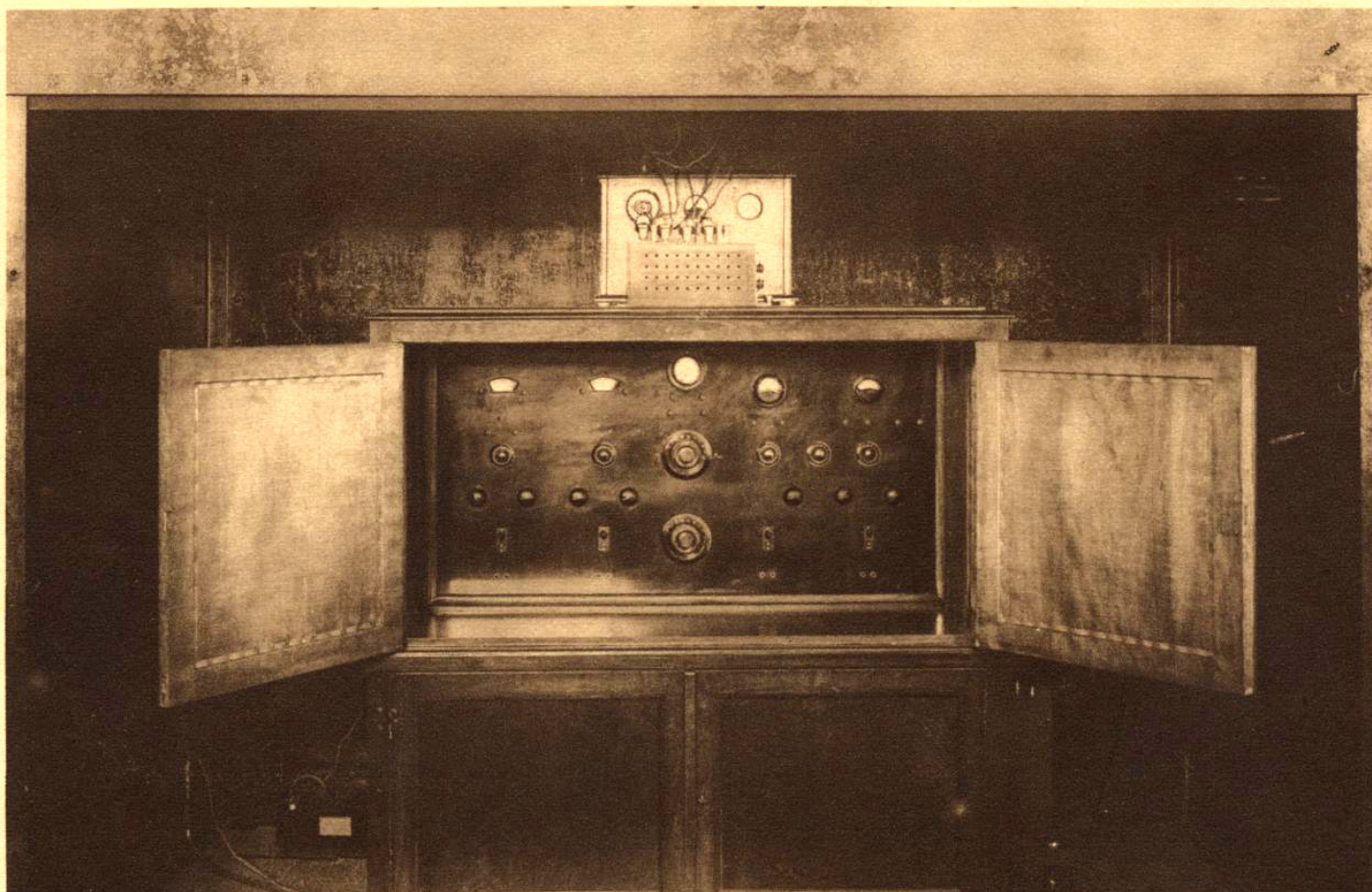
30. Radio Laboratorium te Bandoeng.

Radio Laboratory at Bandoeng.



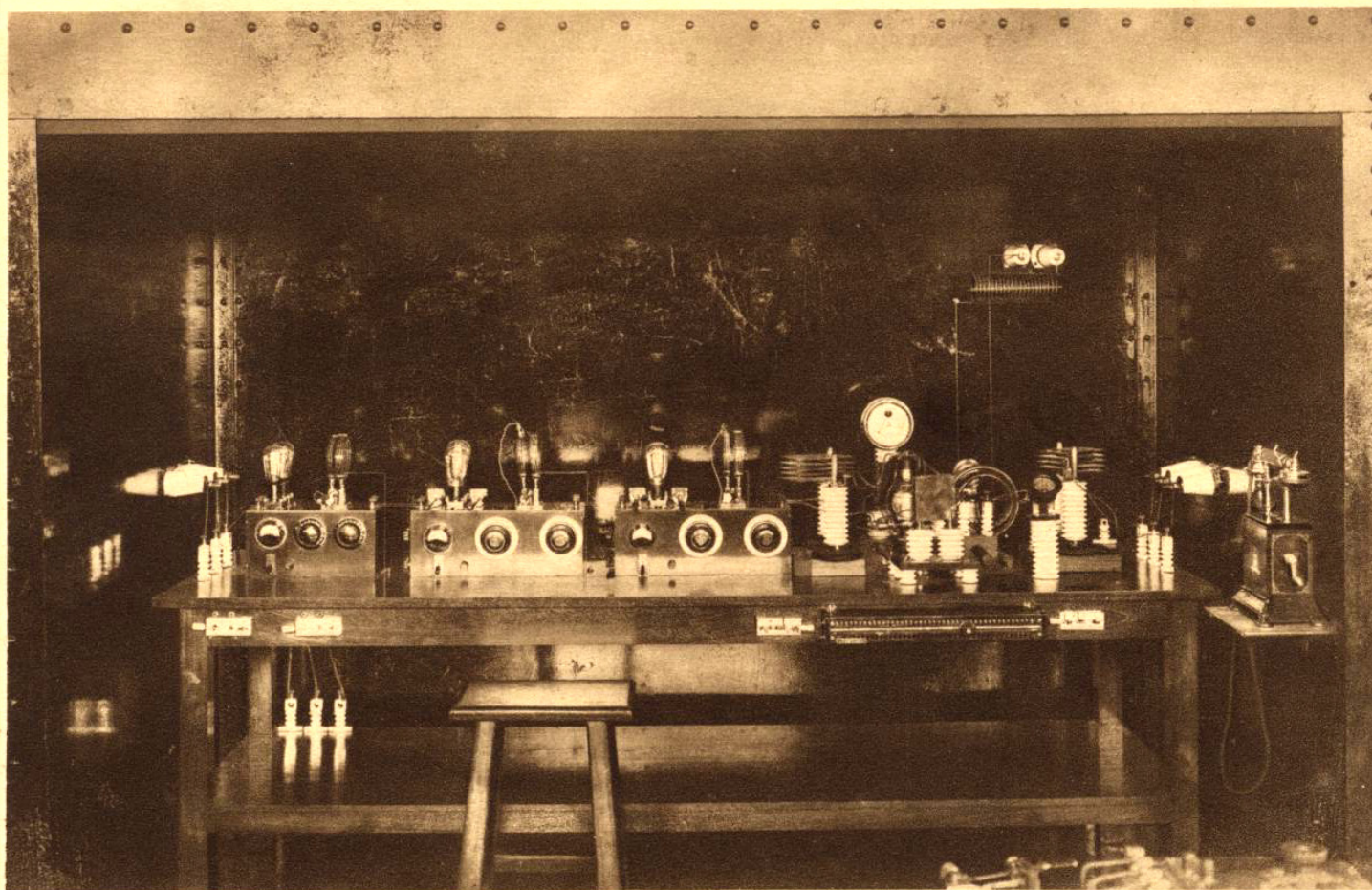
31. Radio Laboratorium te Bandoeng.

Radio Laboratory at Bandoeng.



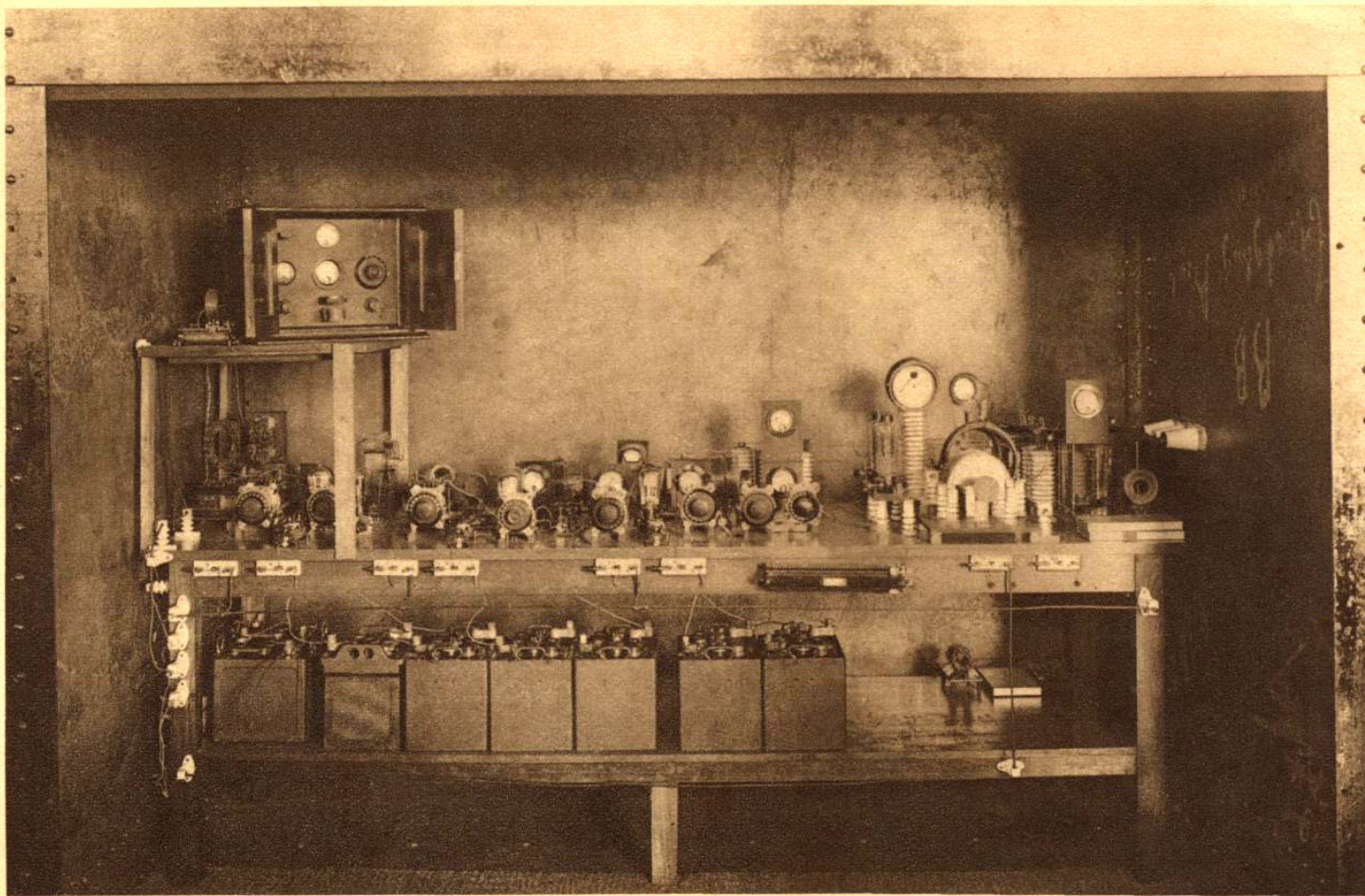
32. Radio Telefonie Zender ANE van het Laboratorium te Bandoeng (1e gedeelte)

Radio Telephony Transmitter ANE of the Laboratory at Bandoeng (1st part)



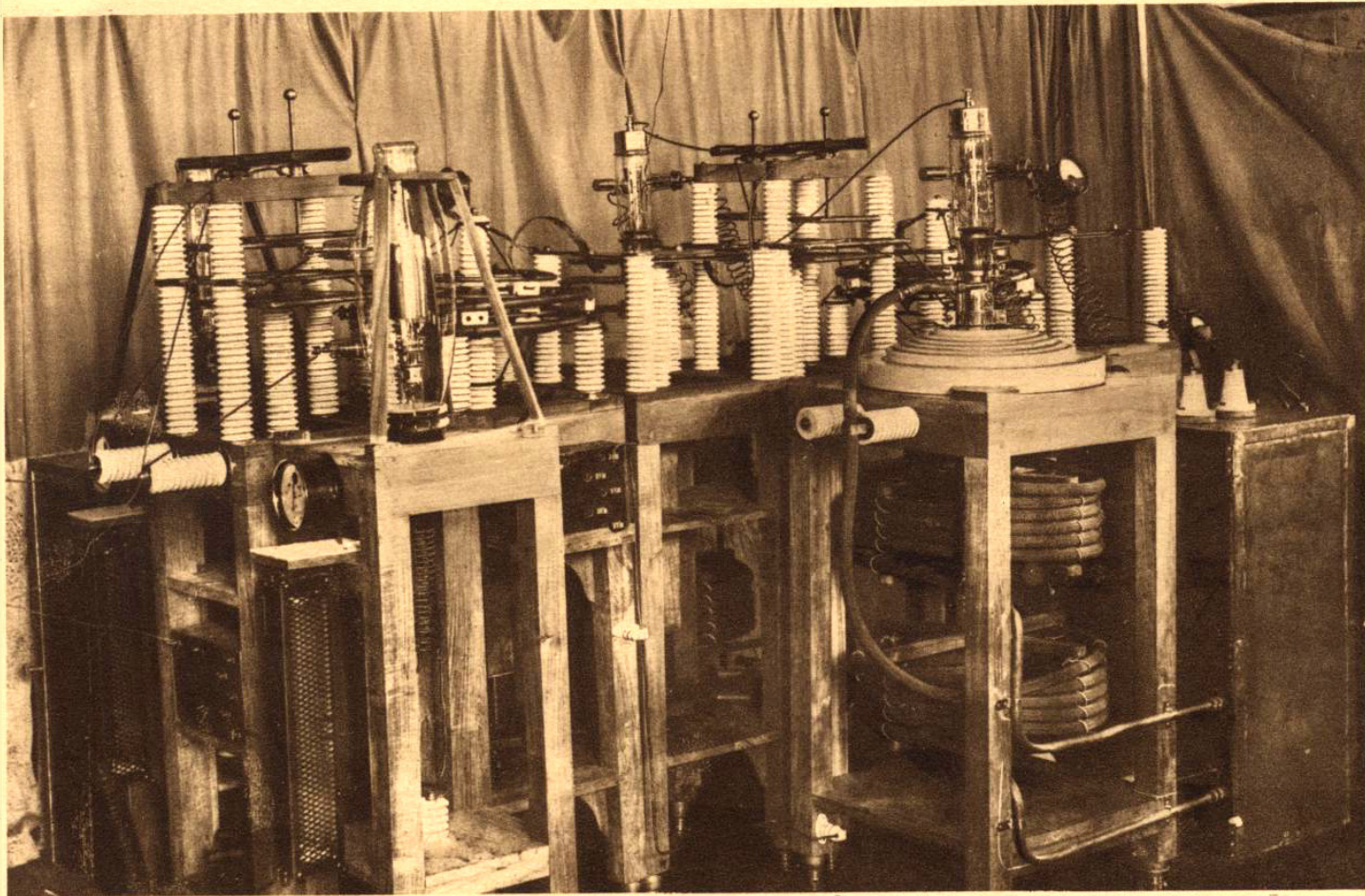
33. Telefoniezender ANE (2e gedeelte)

Telephony Transmitter ANE (2nd part)



34. Telefoniezender A.N.E. (3e gedeelte)

Telephony Transmitter A.N.E. (3rd part)



35. Telefoniezender A.N.E. (4e gedeelte)

Telephony Transmitter A.N.E. (4th part)



36. Verschillende toestellen, in gebruik bij den Gouvernements Radiodienst.

Different apparatus, in use by the Government Radio Service.