

# Men's Health Network

Slides provided by CDC: Health US 2019

Slides updated by Amber Schaffer

## Key Health Indicators

June 2021

[www.menshealthnetwork.org](http://www.menshealthnetwork.org)

[www.menshealthresourcecenter.com](http://www.menshealthresourcecenter.com)

[www.menshealthlibrary.com](http://www.menshealthlibrary.com)

Like us on Facebook:

[Facebook.com/MensHealthNetwork](https://www.facebook.com/MensHealthNetwork)

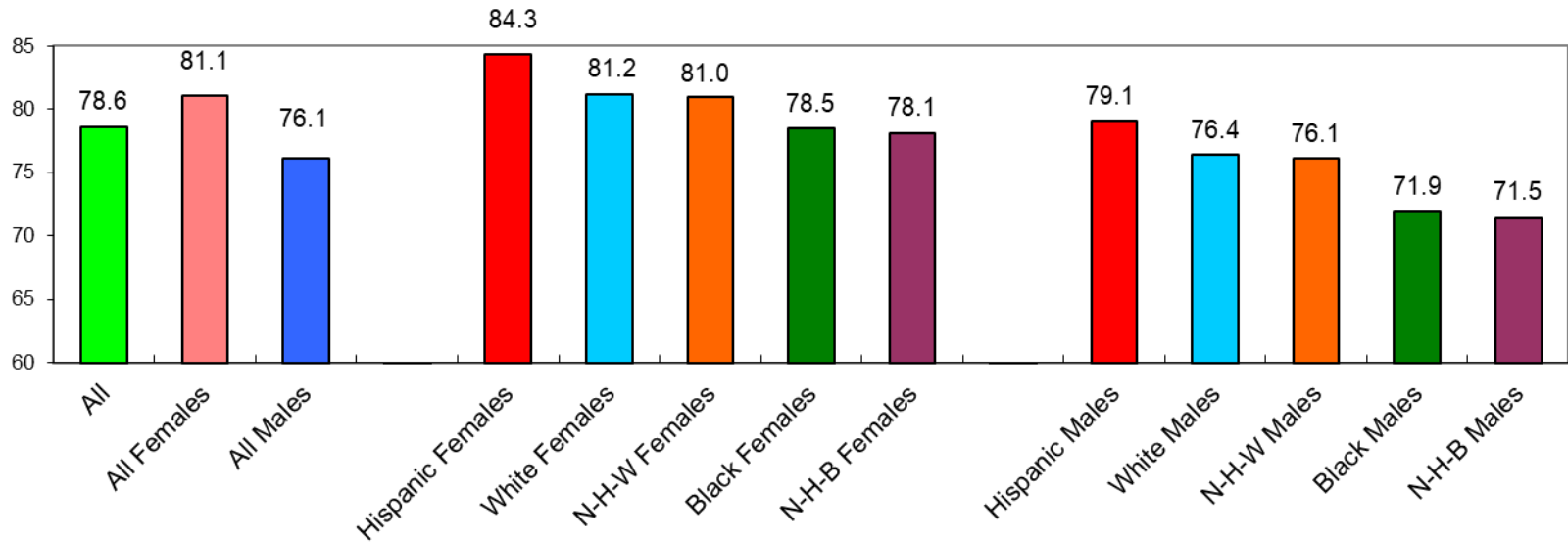
Follow us on Twitter:

[twitter.com/MensHlthNetwork](https://twitter.com/MensHlthNetwork)

# Life Expectancy at Birth, 2017

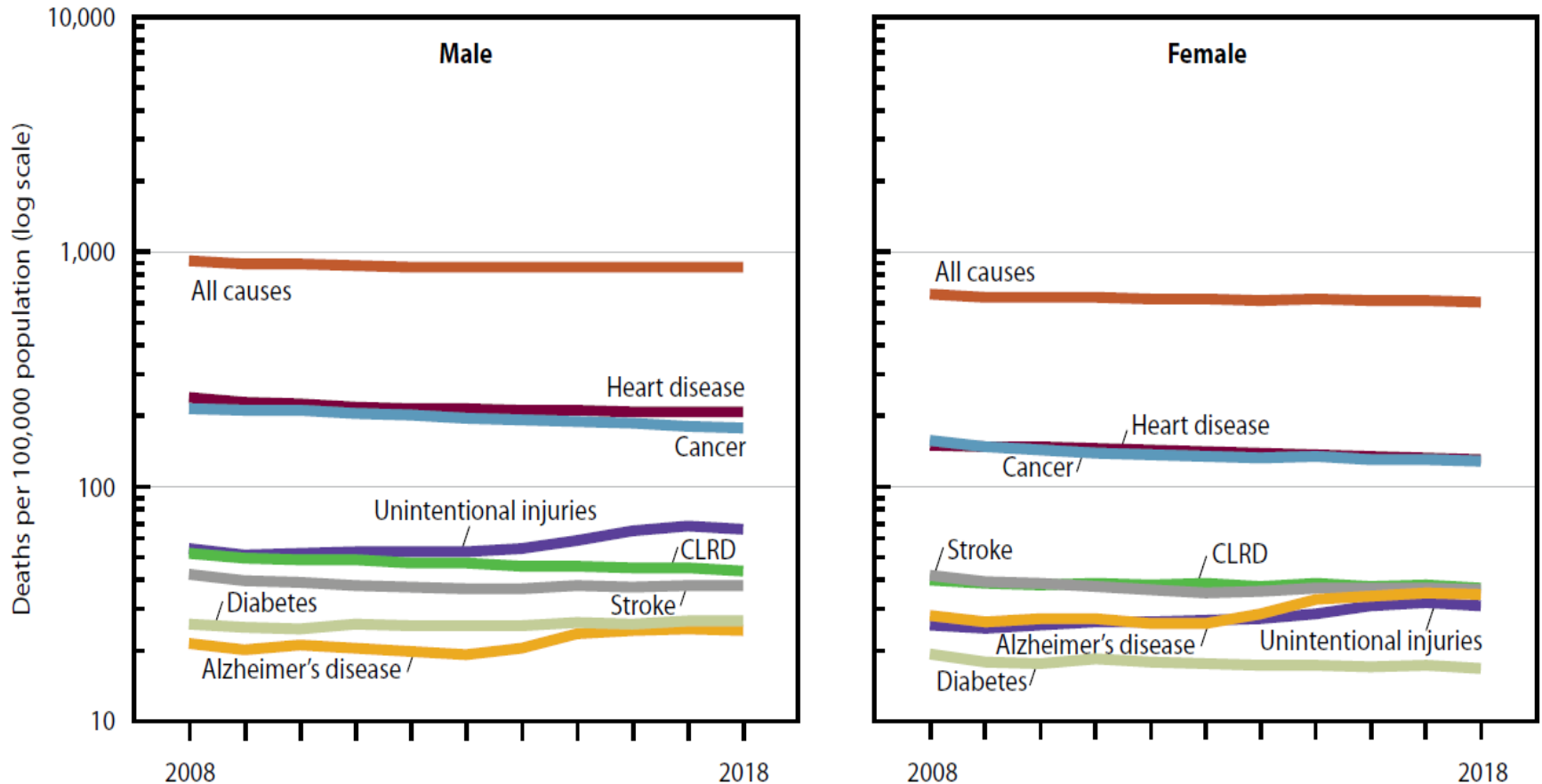
Native Americans and Asian/Pacific Islanders are not charted because of reporting problems. However, Native American and Alaska Natives born today have a life expectancy that is 5.5 years less than the U.S. all races population. Life expectancy for females exceeds that of males in every category.

## Life Expectancy at Birth, 2017



Source: CDC/NCHS/Health, US, 2019: Life Expectancy at Birth, 65 and 85 Years of Age, US, Selected Years 1900-2017 (Source: NVSS) Obtained 6-4-21

# Selected causes of death

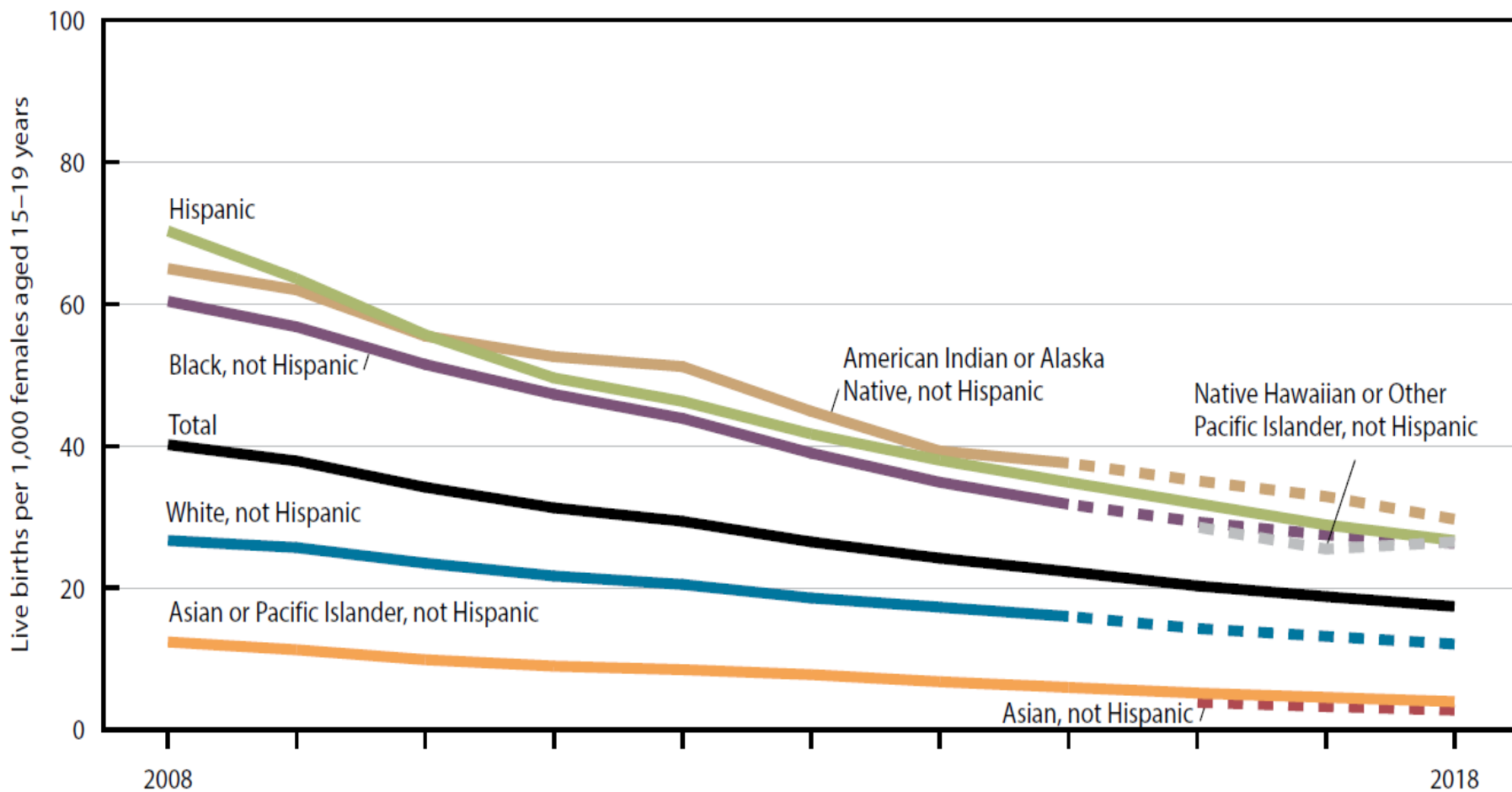


NOTES: CLRD is chronic lower respiratory disease. Unintentional injuries is another term for accidents. Stroke is the major component of cerebrovascular disease. See data table for Figure 3.

SOURCE: NCHS, National Vital Statistics System (NVSS), Mortality. Excel and PowerPoint:

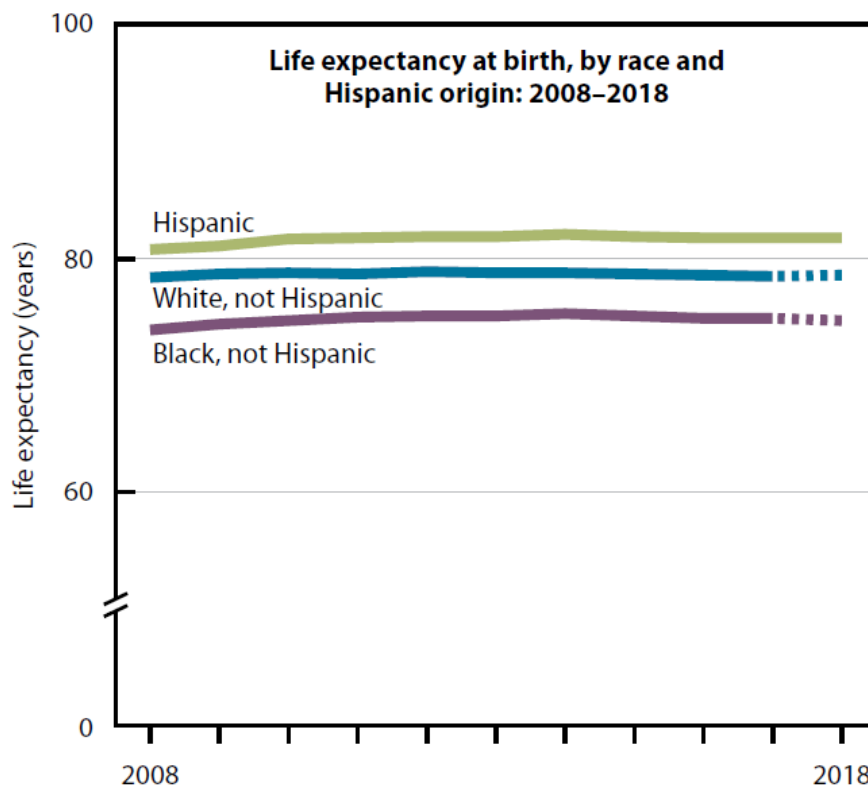
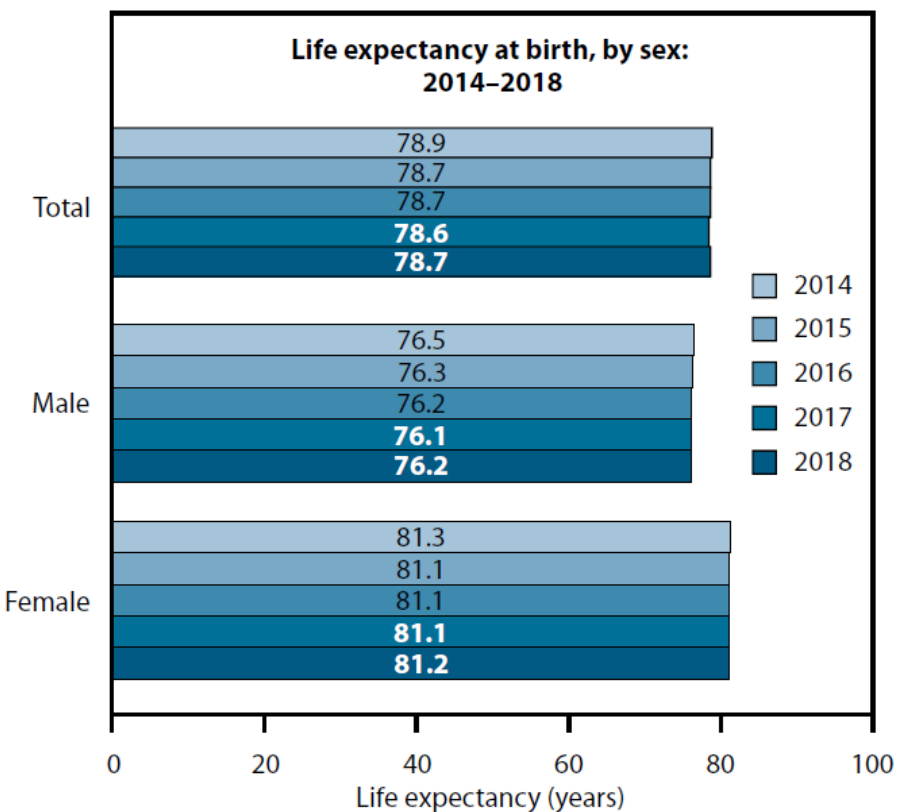
<https://www.cdc.gov/nchs/hus/contents2019.htm#Figure-003>

# Teenage childbearing



SOURCE: NCHS, National Vital Statistics System (NVSS), Natality. Excel and PowerPoint: <https://www.cdc.gov/nchs/hus/contents2019.htm#Figure-007>

# Life expectancy at birth 2008-2018

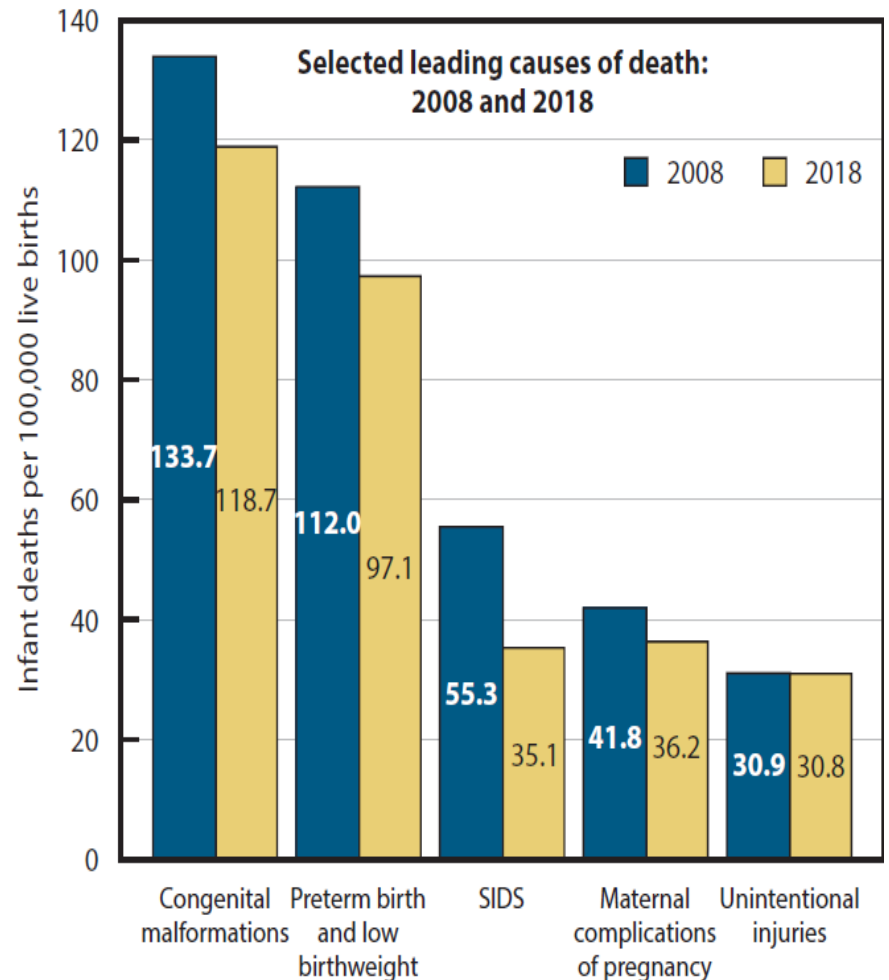
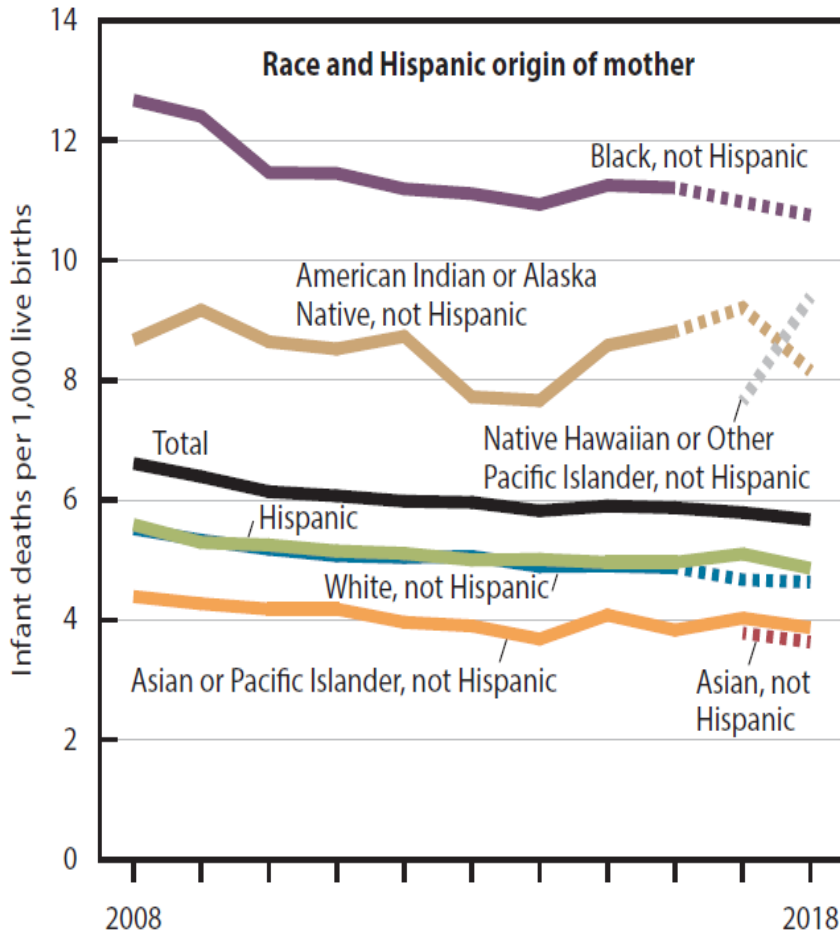


NOTES: Starting with 2018 data, race-specific estimates (dashed lines) are tabulated according to the 1997 "Revisions to the Standards for the Classification of Federal Data on Race and Ethnicity" and are not completely comparable with estimates for earlier years. Persons of Hispanic origin may be of any race.

SOURCE: NCHS, National Vital Statistics System (NVSS), Mortality. Excel and PowerPoint:

<https://www.cdc.gov/nchs/hus/contents2019.htm#Figure-001>

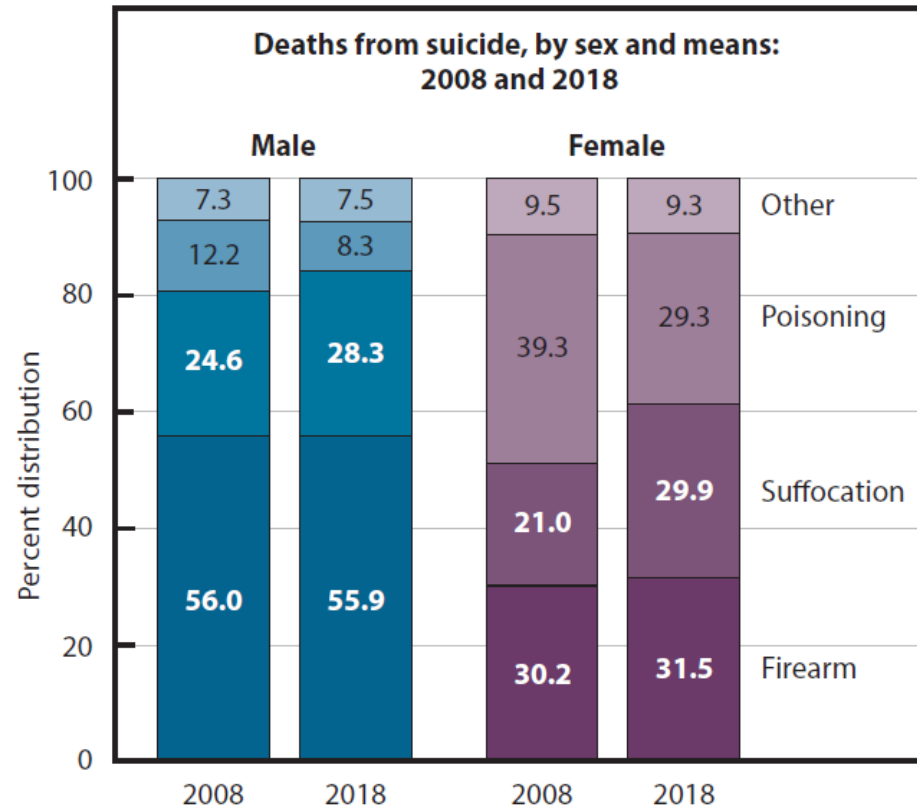
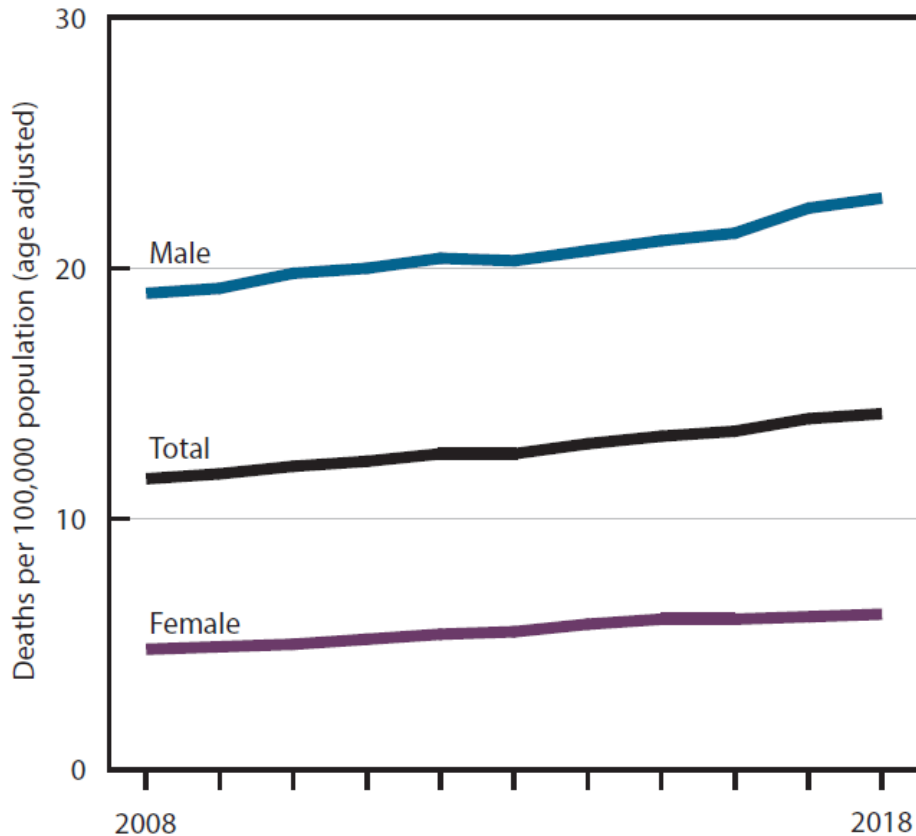
# Infant Mortality



SOURCE: NCHS, National Vital Statistics System (NVSS), Linked Birth/Infant Death Data Set. Excel and PowerPoint: <https://www.cdc.gov/nchs/hus/contents2019.htm#Figure-002>

# Suicide

Suicide is the 10<sup>th</sup> leading cause of death since 2008.

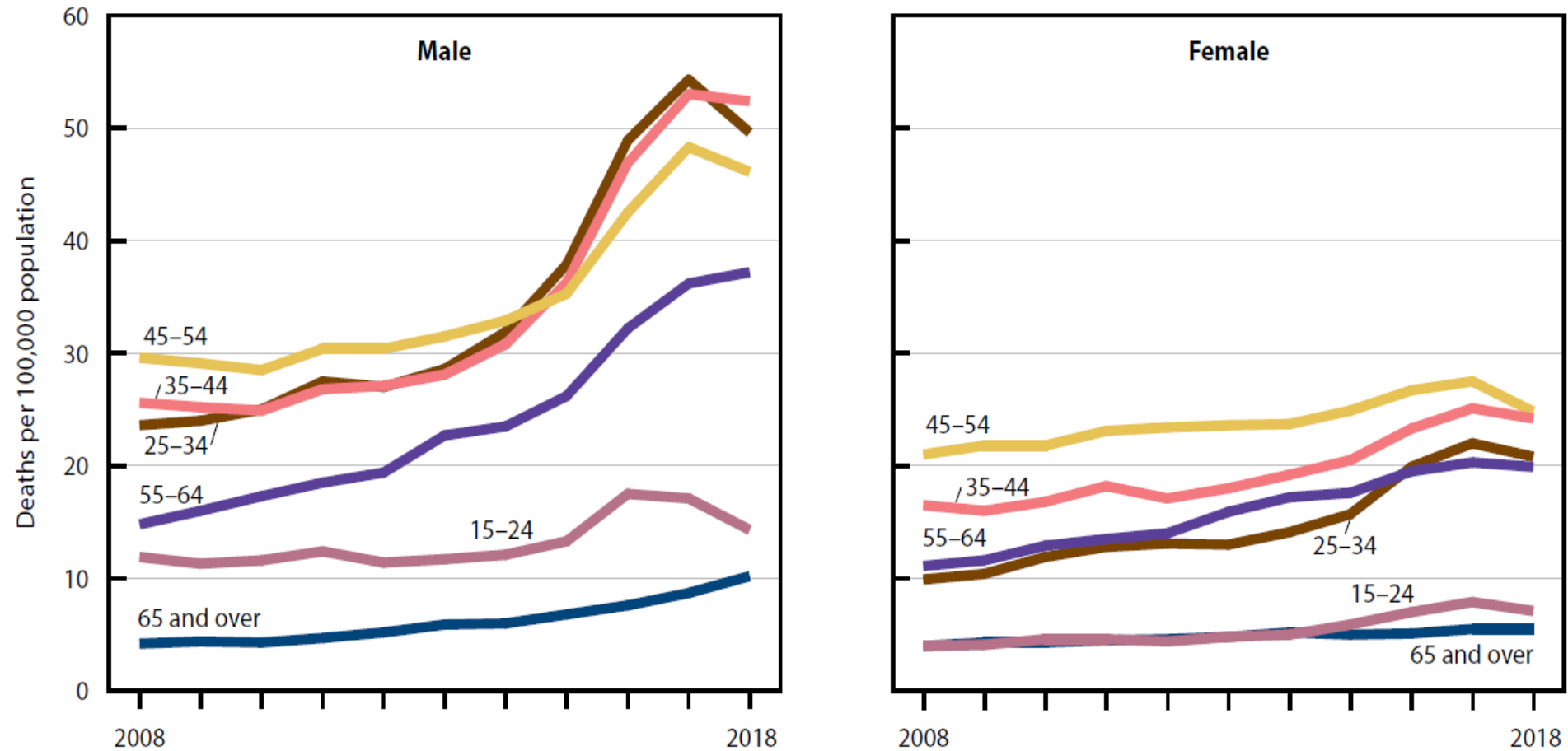


NOTES: Suicide deaths are identified using *International Classification of Diseases, 10th Revision (ICD-10)* underlying cause of death codes U03, X60–X84, and Y87.0. Estimates may not sum to 100% due to rounding. See data table for Figure 5.

SOURCE: NCHS, National Vital Statistics System (NVSS), Mortality. Excel and PowerPoint:

<https://www.cdc.gov/nchs/hus/contents2019.htm#Figure-005>

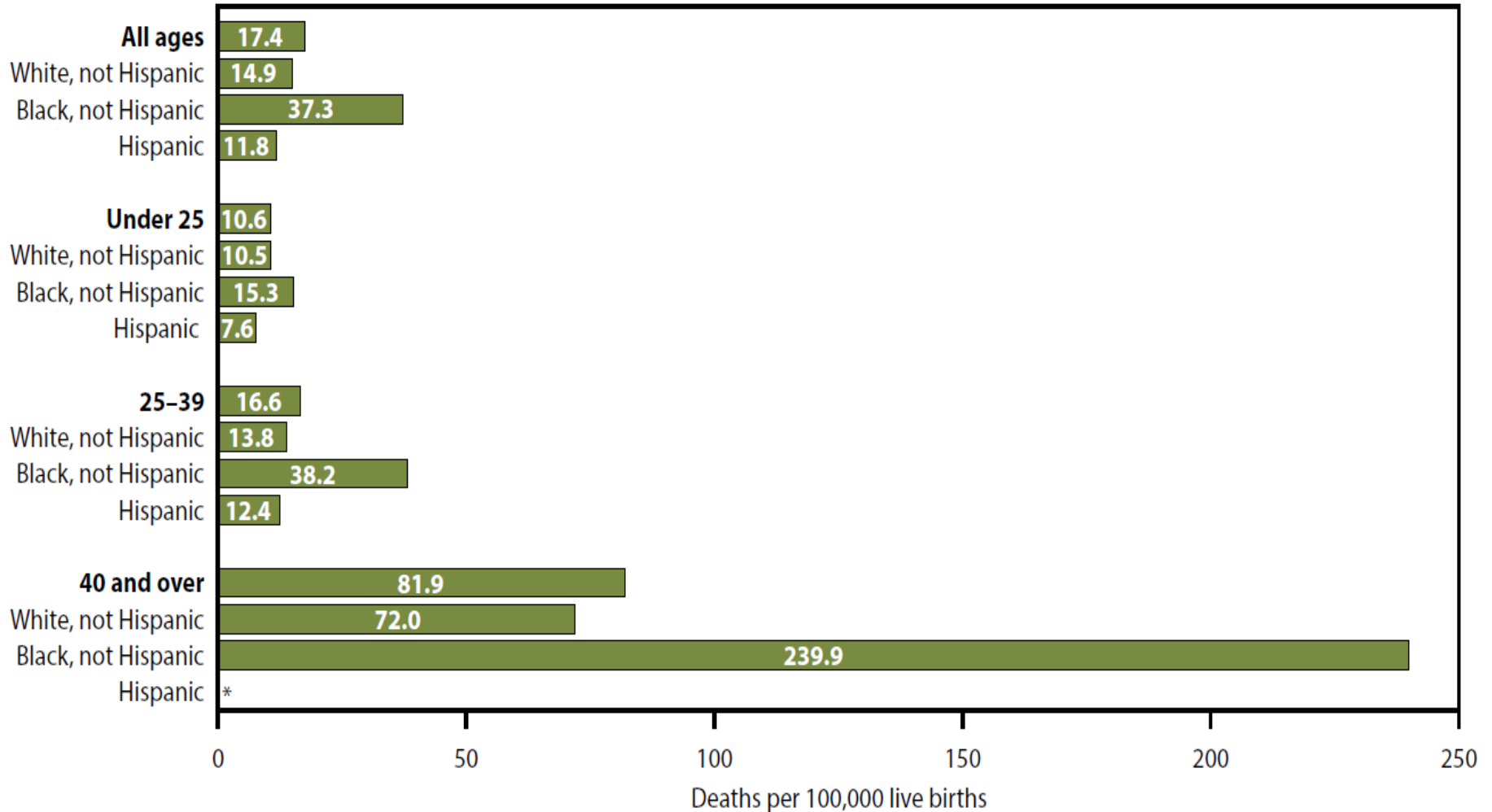
# Drug Overdose Deaths



SOURCE: NCHS, National Vital Statistics System (NVSS), Mortality. Excel and PowerPoint:  
<https://www.cdc.gov/nchs/hus/contents2019.htm#Figure-004>



# Maternal Mortality

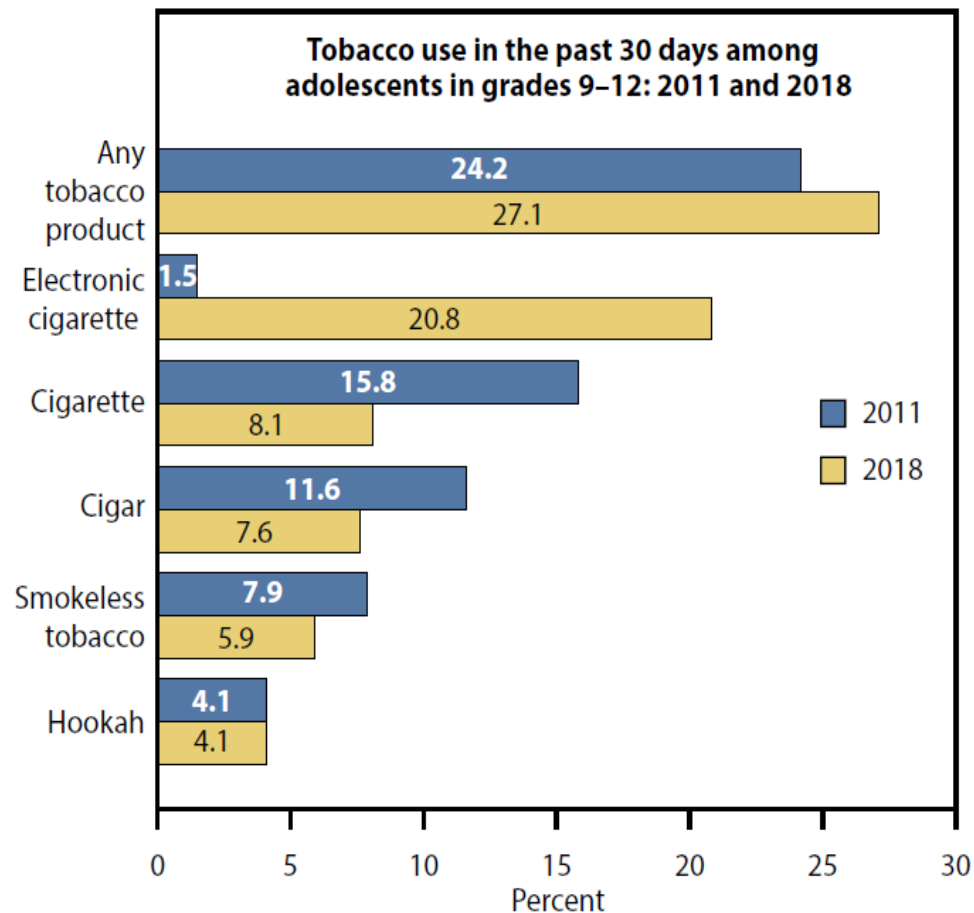
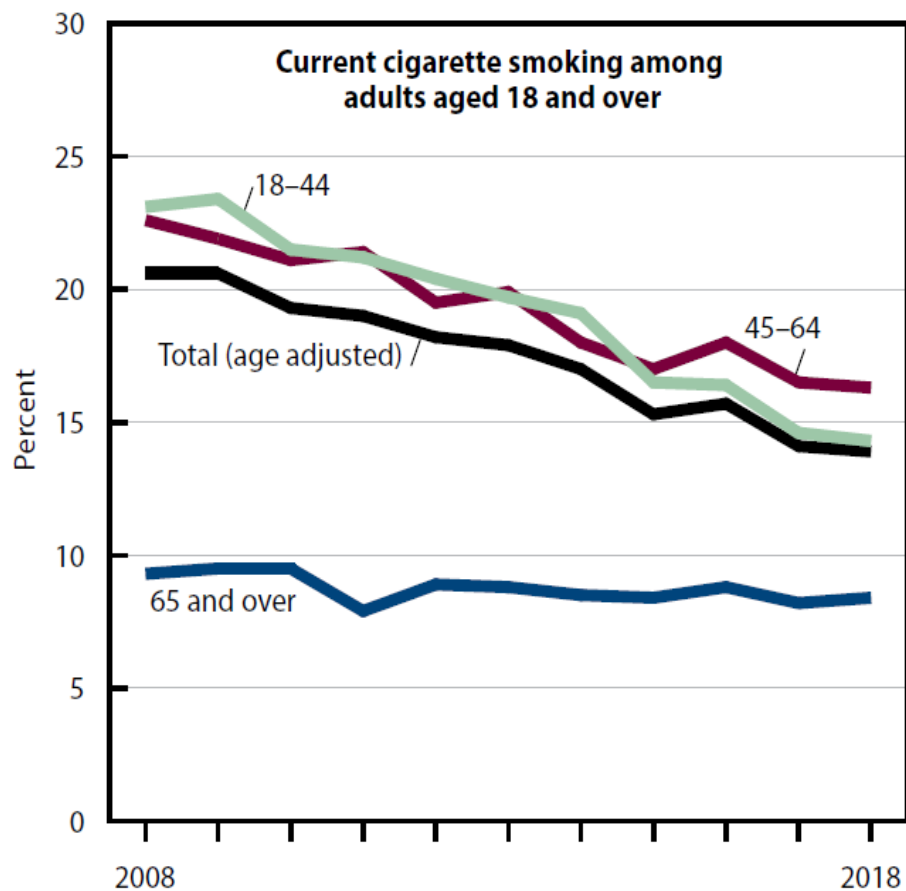


Estimate is considered unreliable; rate not shown is based on fewer than 20 deaths in the numerator.

SOURCE: NCHS, National Vital Statistics System (NVSS), Mortality. Excel and PowerPoint:

<https://www.cdc.gov/nchs/hus/contents2019.htm#Figure-006>

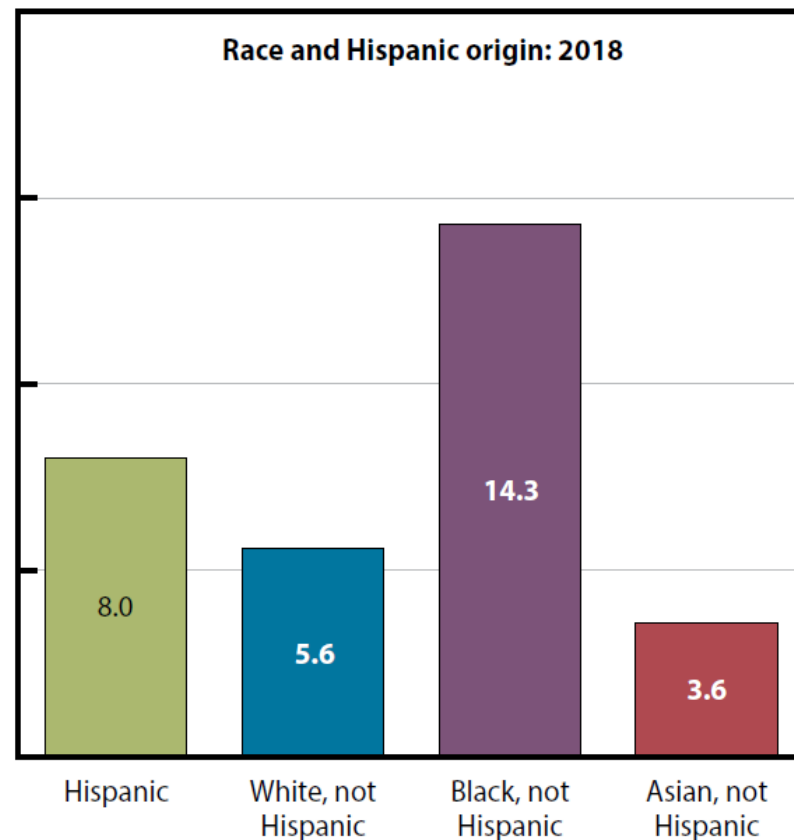
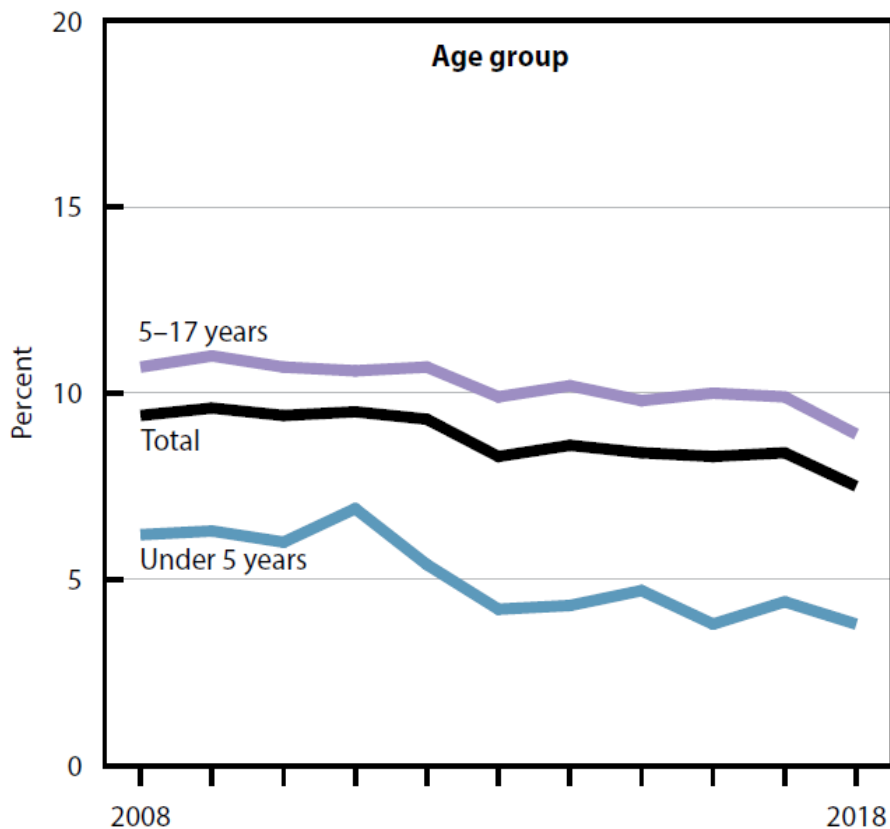
# Use of Tobacco Products



NOTES: Current cigarette smoking by adults is defined as ever smoking 100 cigarettes in their lifetime and smoking now every day or some days. Use of tobacco products by high school students in grades 9-12 is defined as having used the product on one or more days during the past 30 days. Data on pipe tobacco can be found in the data table. See data table for Figure 9.

SOURCE: NCHS, National Health Interview Survey (NHIS) (Current cigarette smoking chart); and CDC, National Youth Tobacco Survey (NYTS) (Tobacco use chart). Excel and PowerPoint: <https://www.cdc.gov/nchs/hus/contents2019.htm#Figure-009>

# Current Asthma Among Children

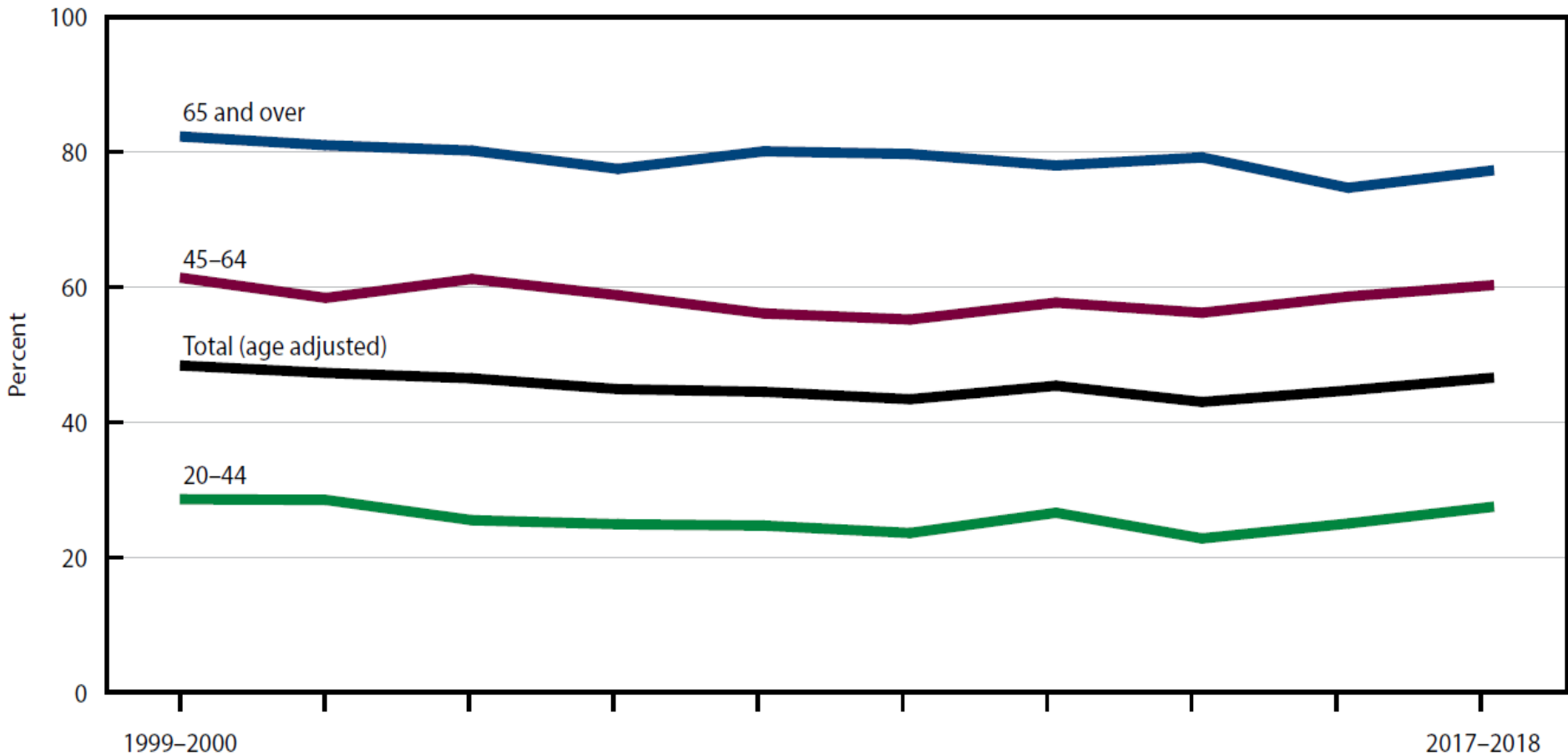


NOTES: Current asthma is based on a parent or knowledgeable adult responding yes to both questions, "Has a doctor or other health professional ever told you that your child had asthma?" and "Does your child still have asthma?" See data table for Figure 10.

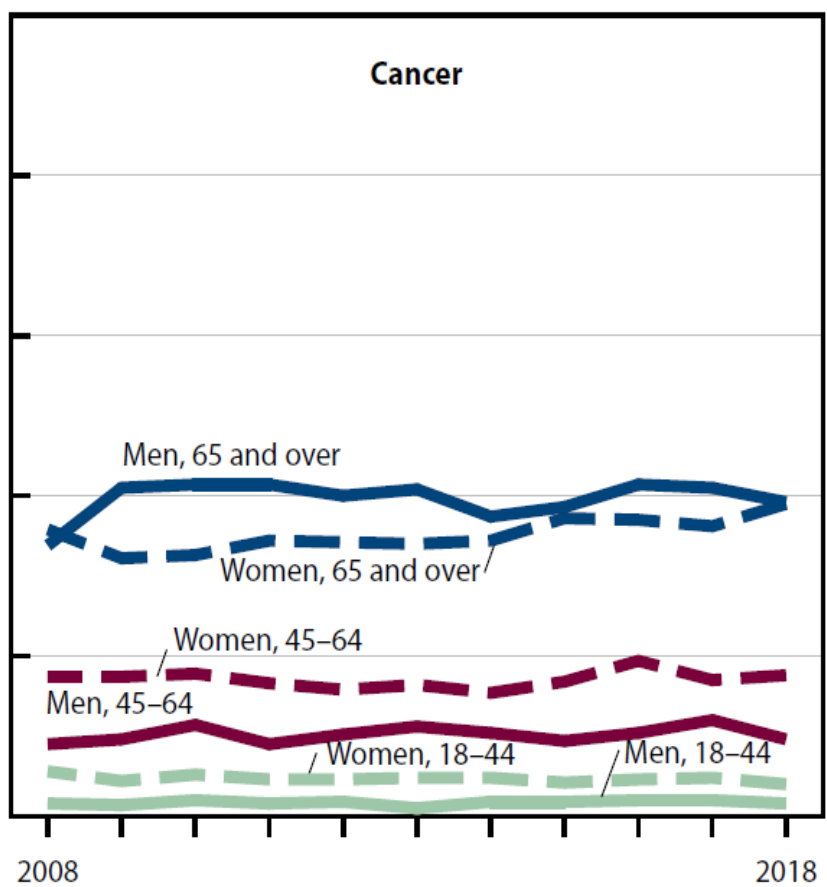
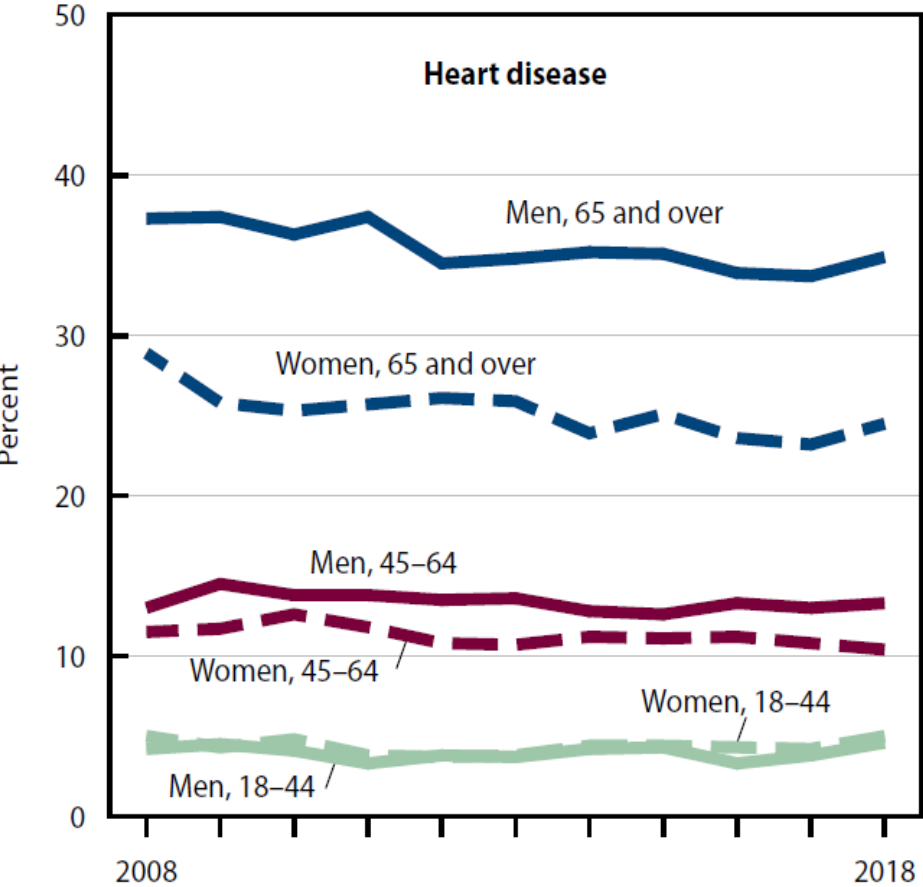
SOURCE: NCHS, National Health Interview Survey (NHIS). Excel and PowerPoint: <https://www.cdc.gov/nchs/hus/contents2019.htm#Figure-010>

# Hypertension

Among adults aged 20 and over, by age: United States, 1999–2000 through 2017–2018

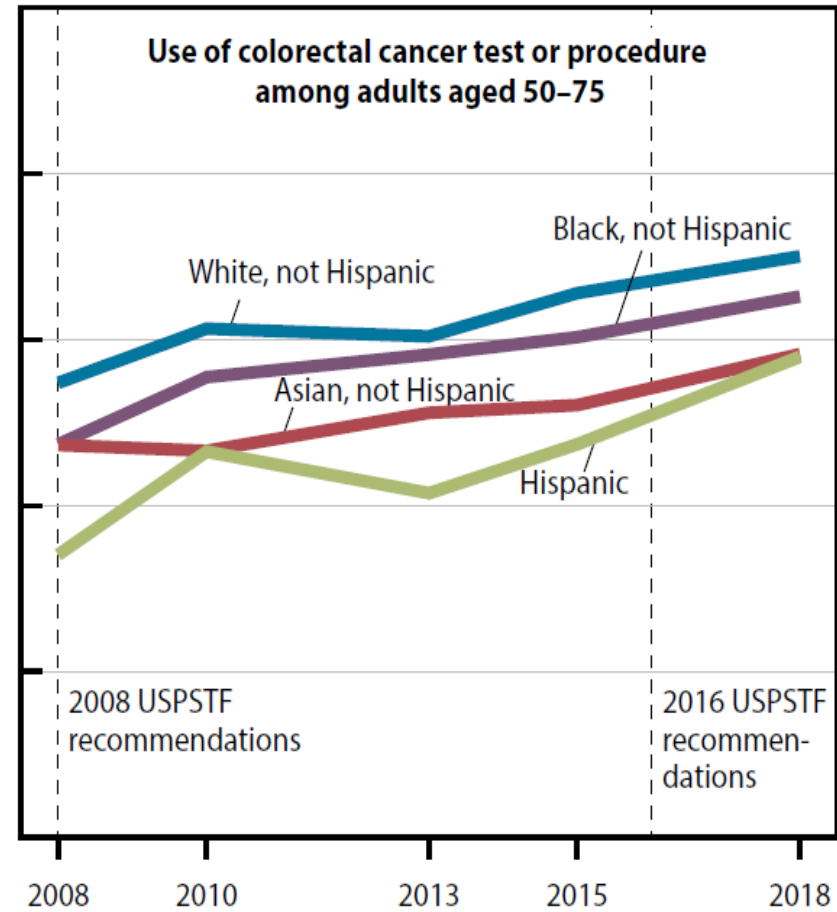
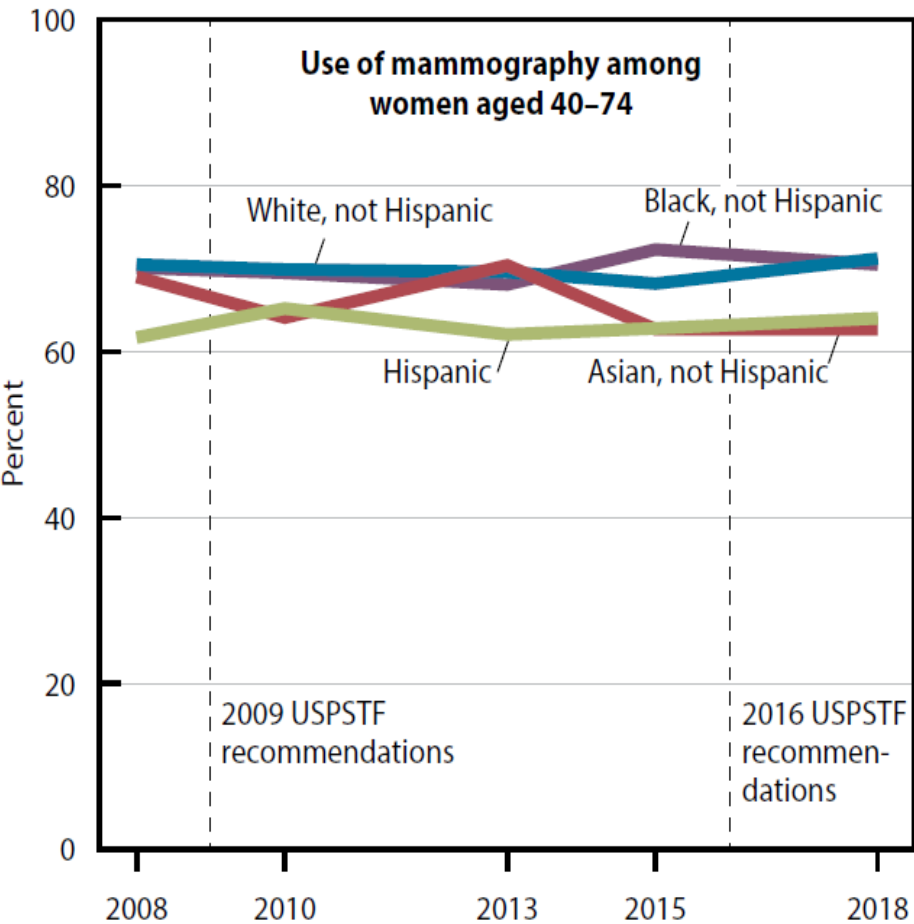


# Heart Disease and Cancer



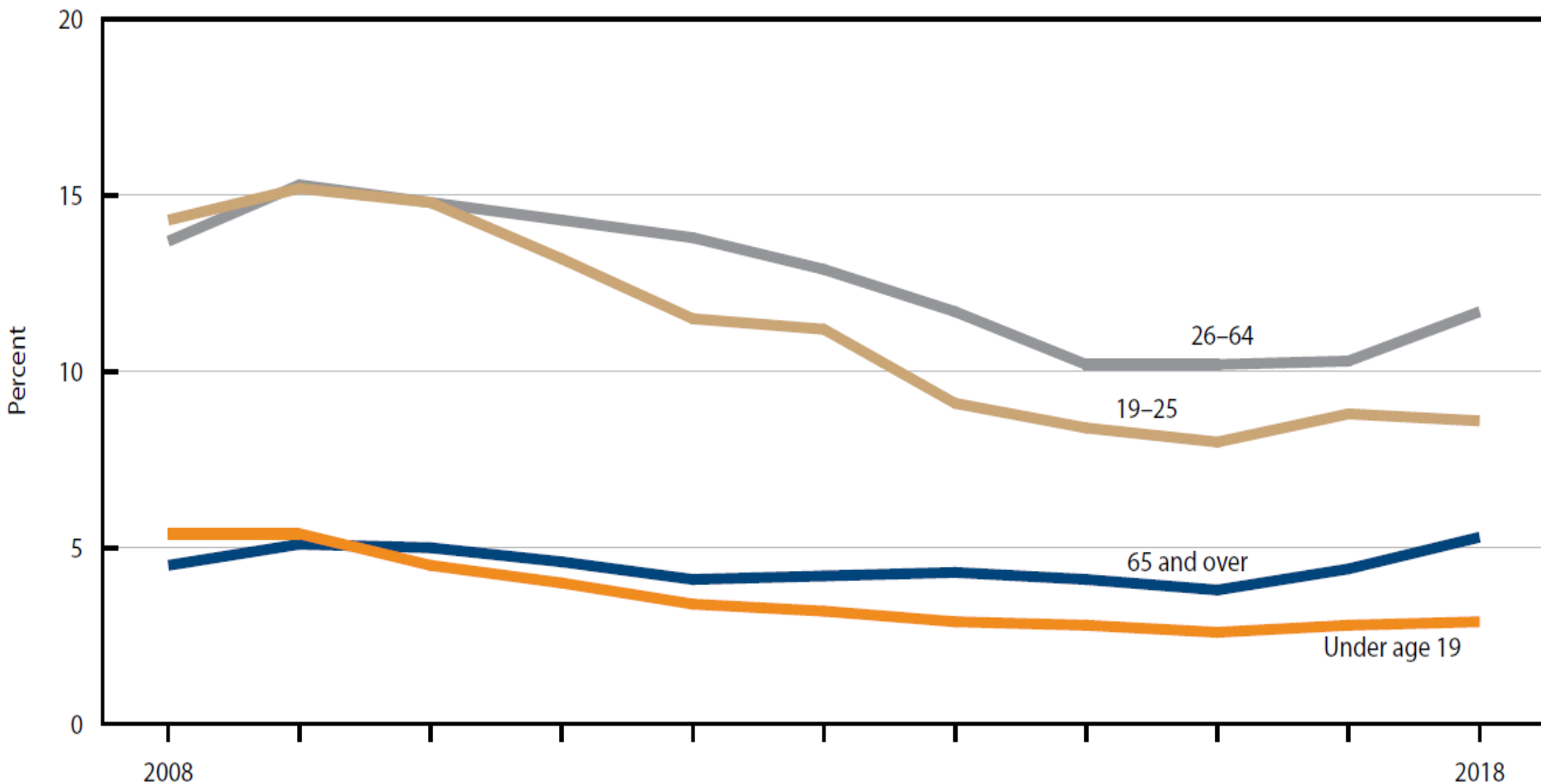
SOURCE: NCHS, National Health Interview Survey (NHIS). Excel and PowerPoint: <https://www.cdc.gov/nchs/hus/contents2019.htm#Figure-012>

# Use of Mammography and Colorectal Tests and Procedures



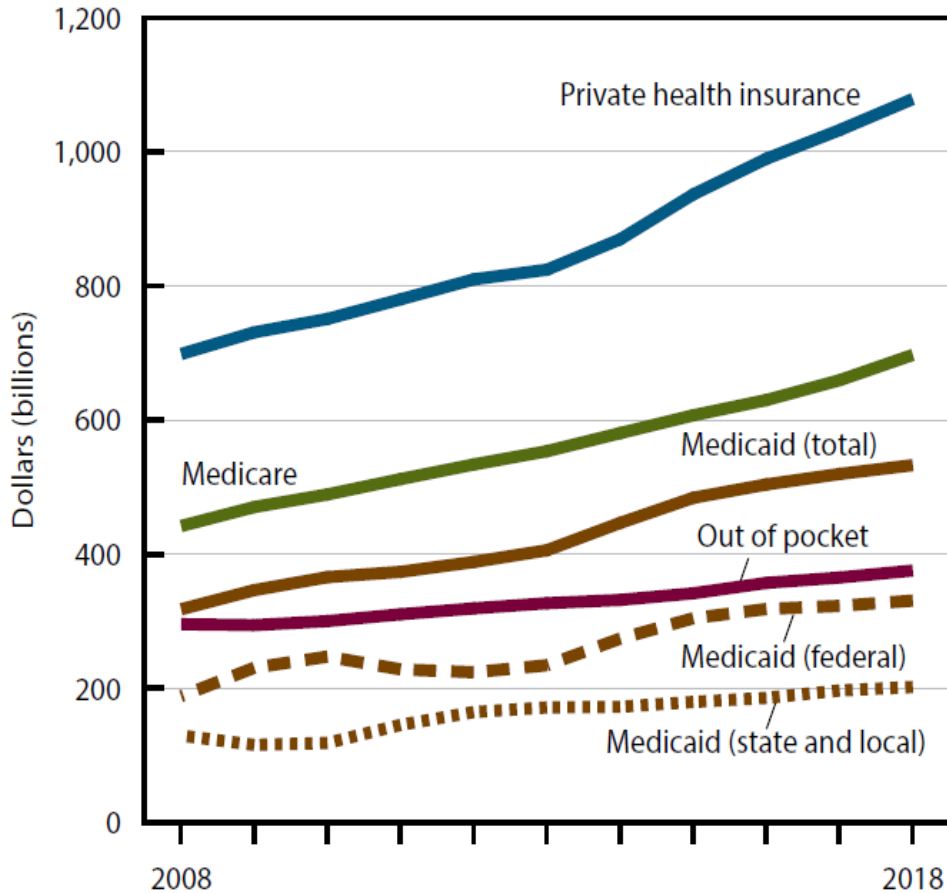
# Unmet Need Due to Cost

Delay or non-receipt of needed medical care in the past 12 months due to cost, by age: United States, 2008-2018

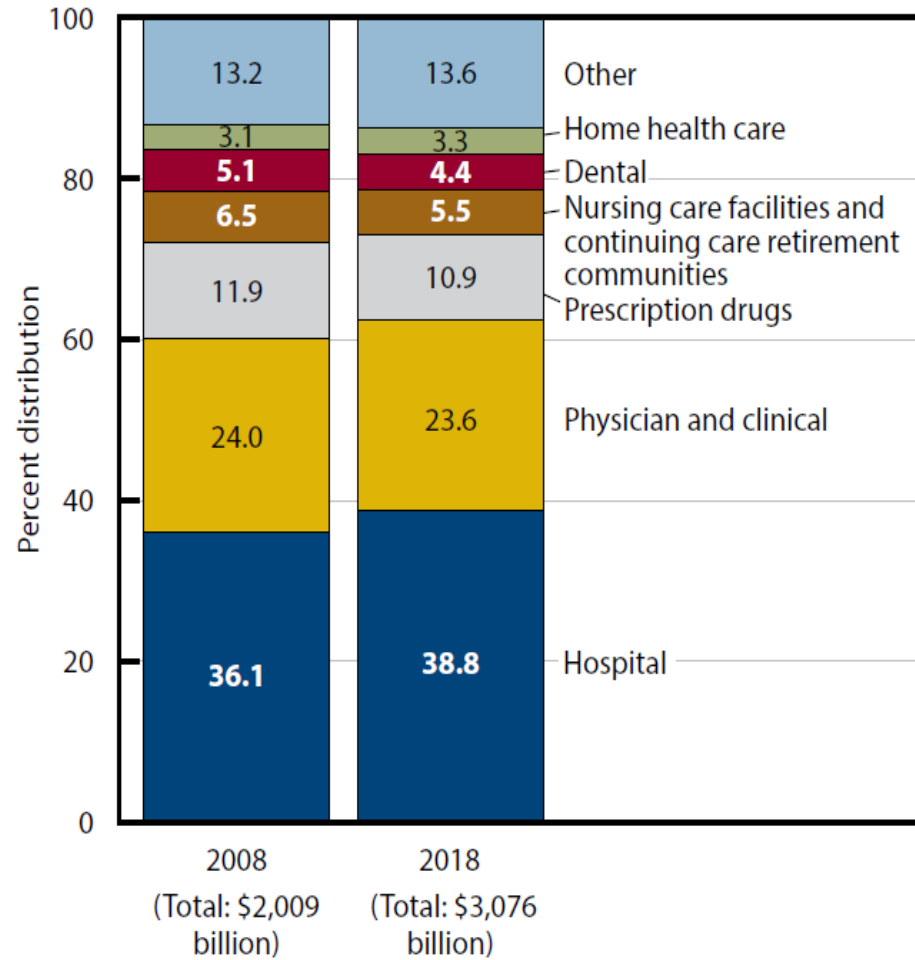


# Personal Health Care Expenditures

Source of funds

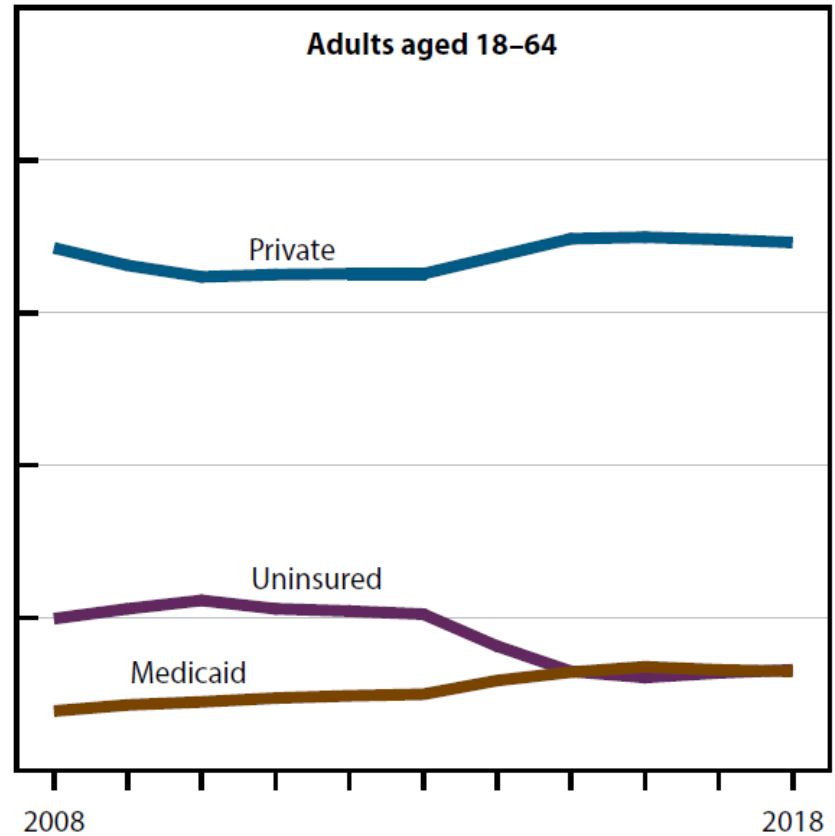
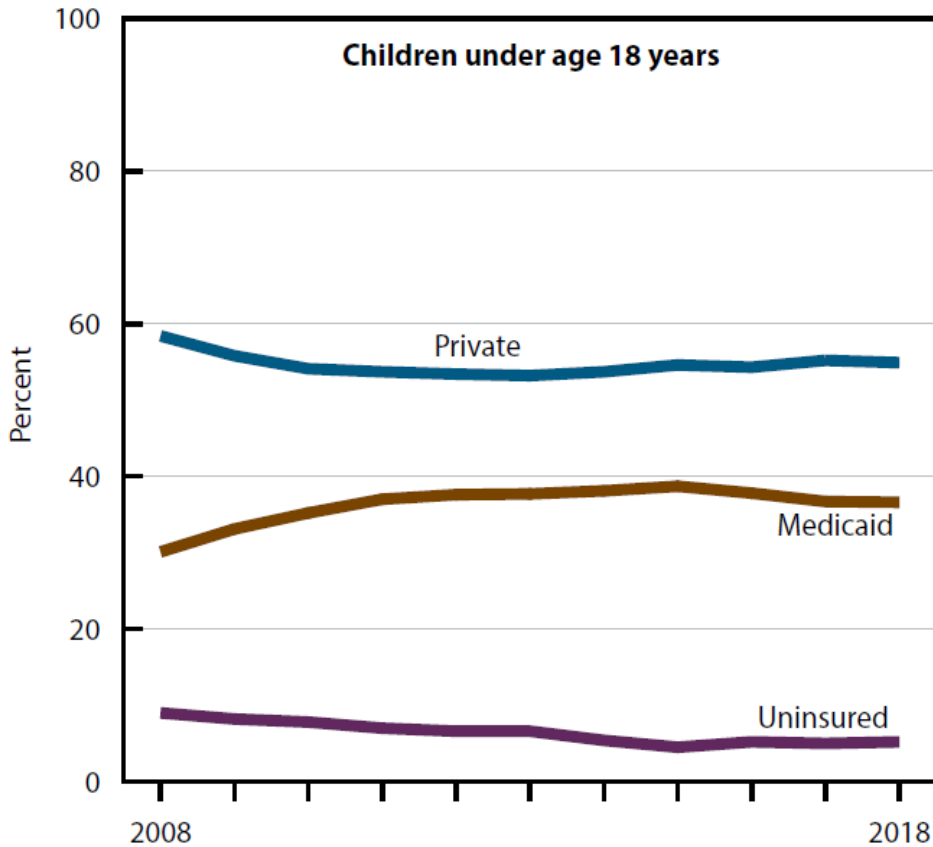


Type of expenditure

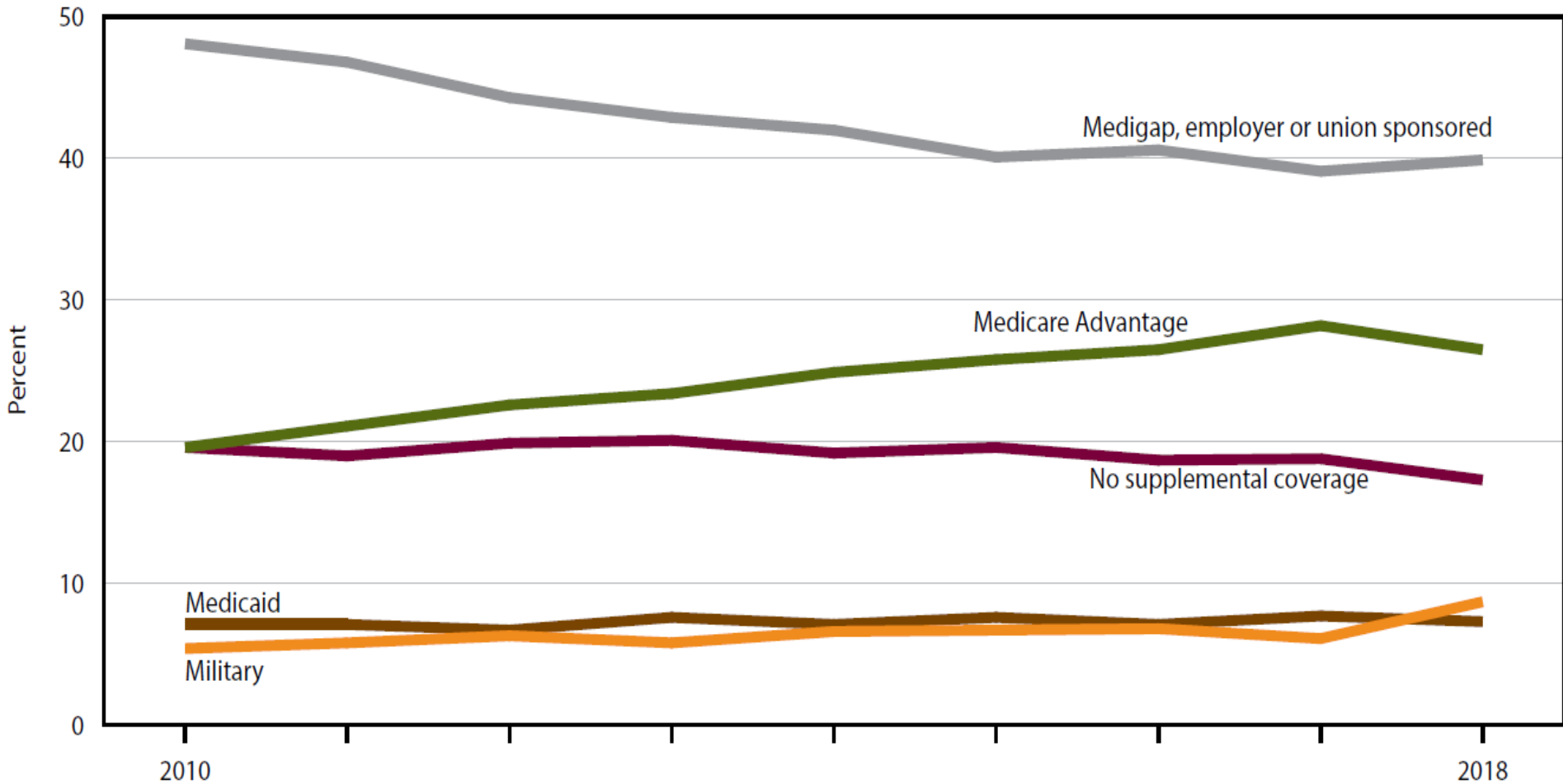




# Health Insurance Coverage

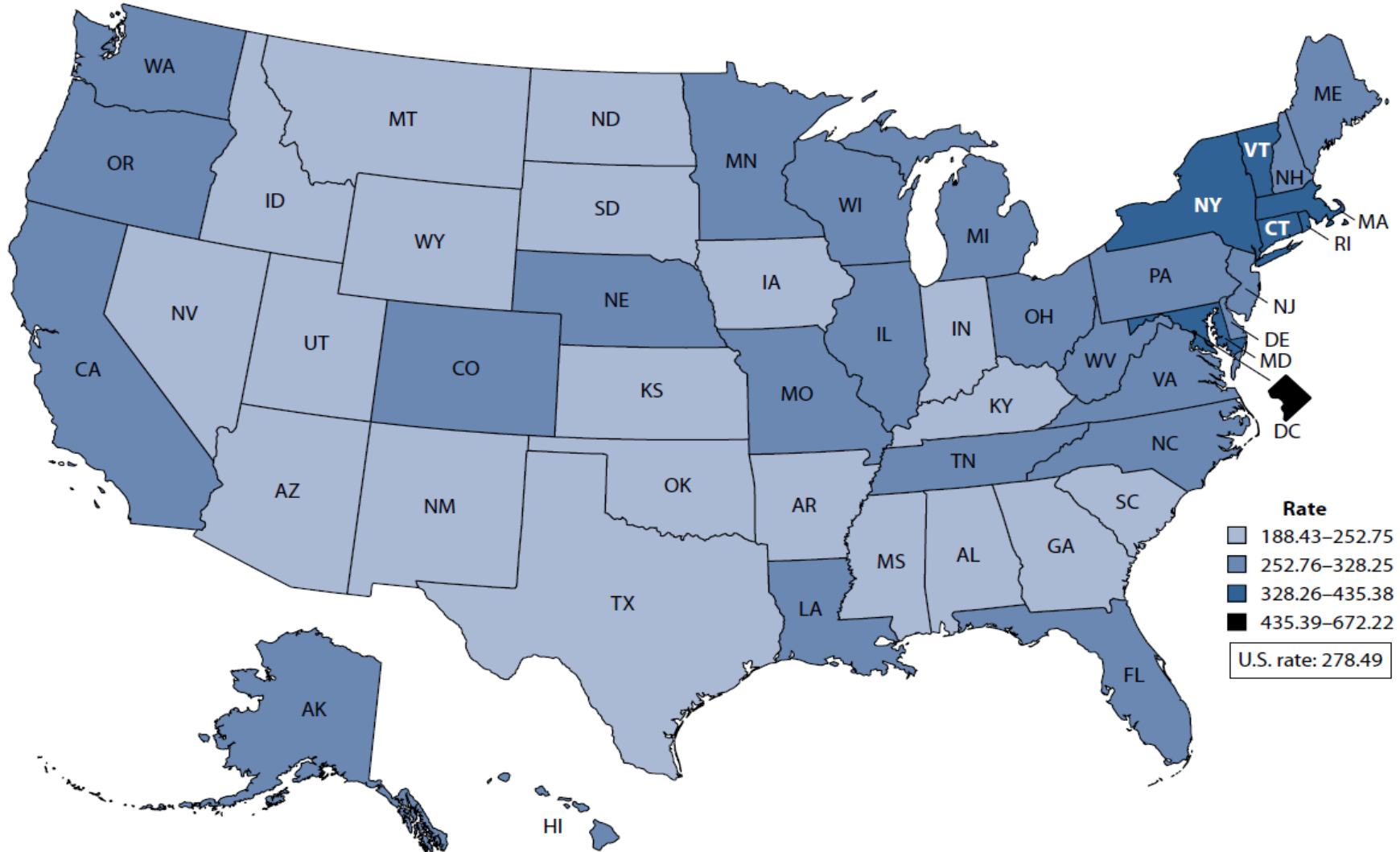


# Supplemental Insurance Among Medicare Beneficiaries



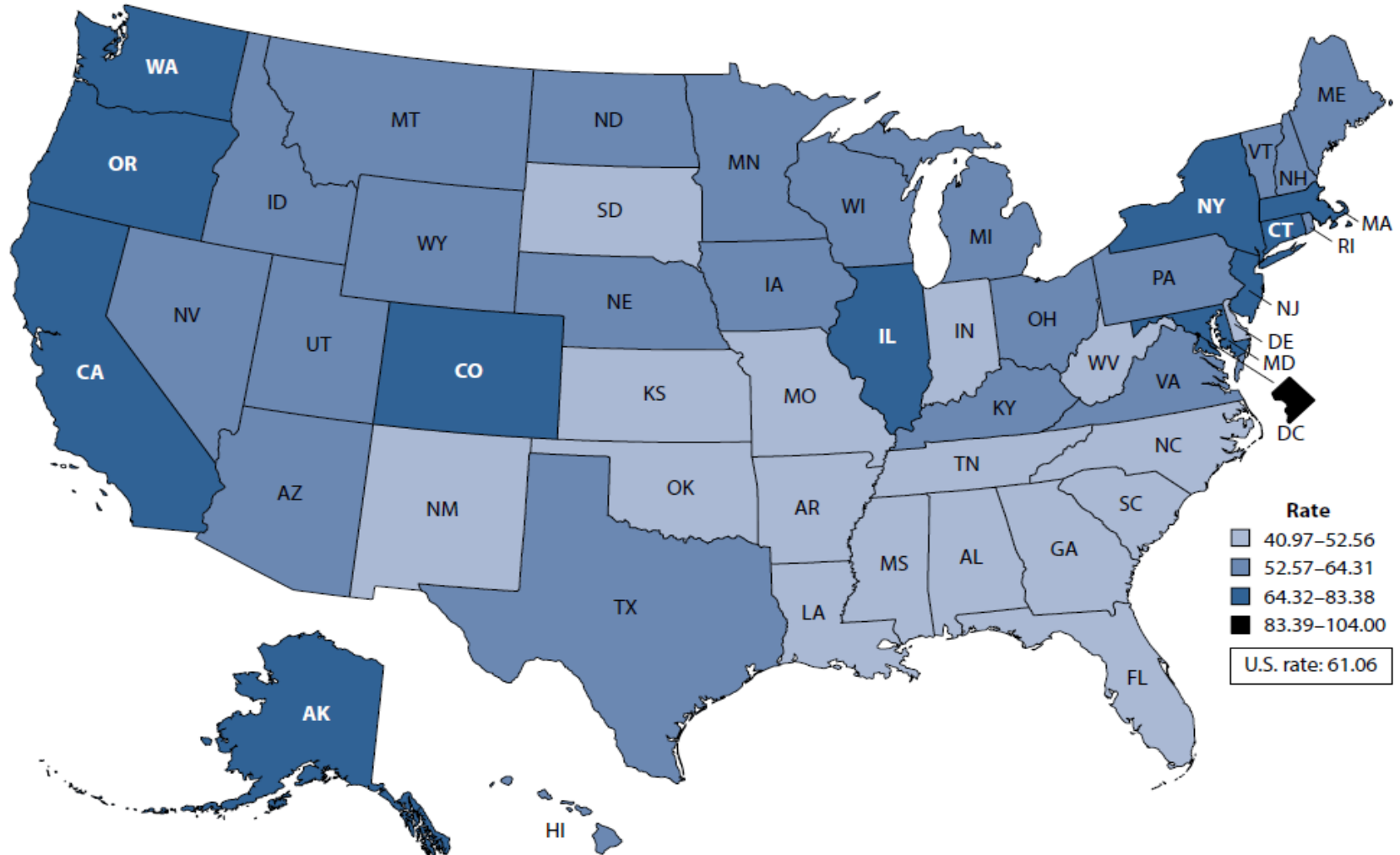
# Physicians

Number of physicians in patient care per 100,000 resident population, by state:  
United States, 2018



# Dentist

Number of dentists per 100,000 residents population, by state: United States, 2019



The complete Health-US 2019 Report,  
published in 2019, can be found at

<https://www.cdc.gov/nchs/data/hus/hus19-appendix-508.pdf>

**Men's Health Network:**

[www.menshealthnetwork.org](http://www.menshealthnetwork.org)

[info@menshealthnetwork.org](mailto:info@menshealthnetwork.org)

Like us on Facebook: [Facebook.com/MensHealthNetwork](https://www.facebook.com/MensHealthNetwork)

Follow us on Twitter: [twitter.com/MensHlthNetwork](https://twitter.com/MensHlthNetwork)