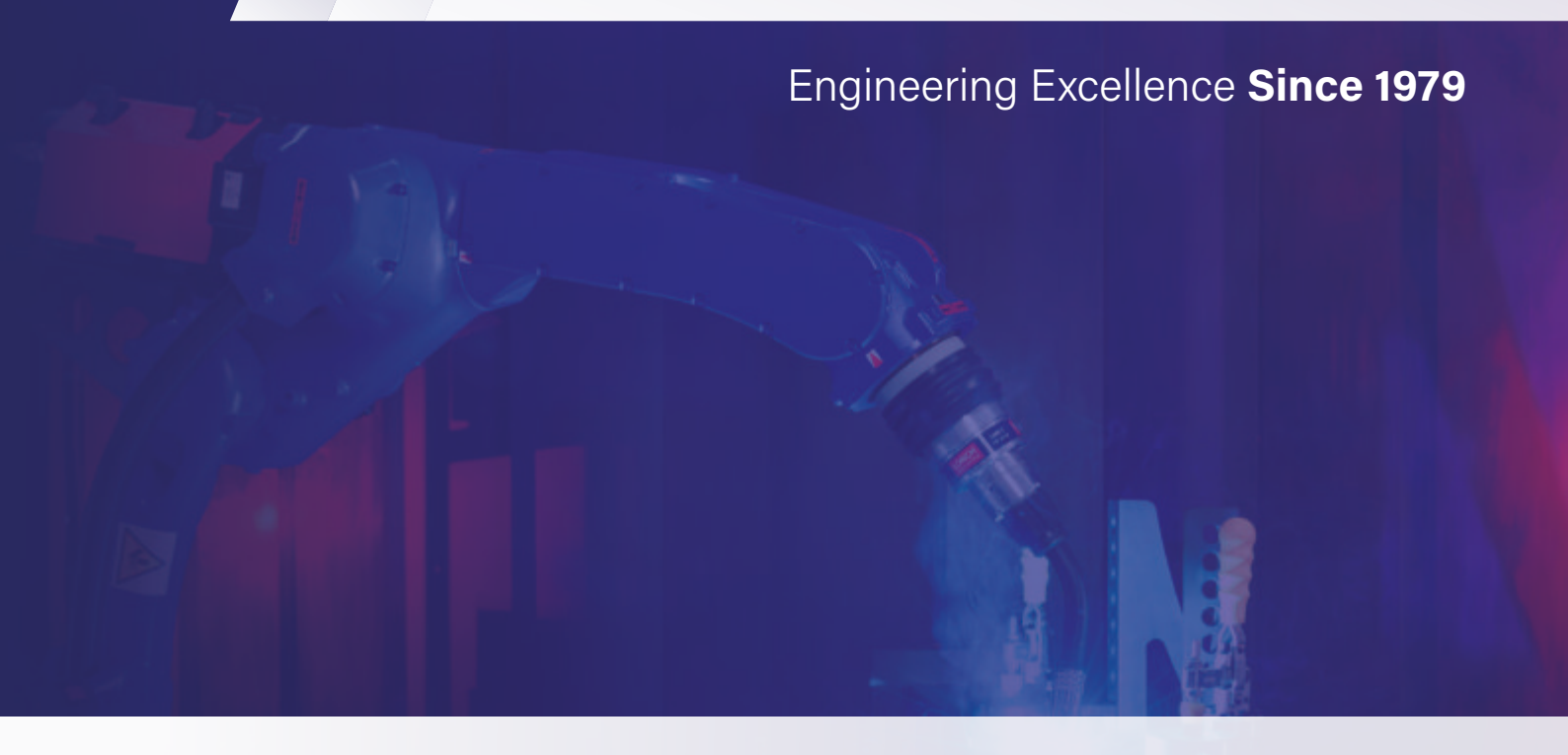




///METALTEX

Engineering Excellence **Since 1979**





Company

Metaltex Australia Pty Ltd is an ISO 9001:2015 accredited business located in Melbourne, specialising in Sheet Metal, Fabrication, Manufacturing and Engineering.

We are a leading OEM supplier to industry of high-quality precision manufactured steel and aluminium products, with over 40 years of experience in a wide range of key manufacturing industries, including **automotive, aerospace, defence, infrastructure, aviation, mining, energy, rail and rollingstock, food processing, entertainment, RV, point of sale, water transfer and storage, agriculture, signage and electronics, general manufacturing.**

We offer complete precision manufacturing solutions and services to industry for projects of any size and scale. As Industry demands and expectations change, Metaltex continues to evolve and invest in our capabilities, facilities and services.

Metaltex produces and manufactures general sheet metal products for a range of industries. We aim to continually improve the products and services we provide to meet our client's requirements and to produce finished work that we can be proud of.

We aim to achieve the above by implementing a quality management system that complies with the international standard ISO 9001. It also includes a commitment to meet the requirements of our clients, as well as legal and regulatory requirements. Also to the continual development of the system and helping to ensure it remains effective.



Industry 4.0

Metaltex has worked meticulously to achieve technological advancement stage jump to latest fourth gen. The change is based on the adoption of new technologies for the progressive automation of the production process. This allows manufacturing of highly customized, flexible and efficient products. It affects the entire product lifecycle, ensuring its vertical and horizontal integration, resulting in an increased productivity and competitiveness, as well as reduction in costs.





Capabilities

Metaltex has a world class facility providing a range of in-house manufacturing capabilities that are scalable to suit domestic and international applications. Our capabilities include:

- PRECISION FIBRE LASER CUTTING
- PRECISION FIBRE TUBE LASER CUTTING
- PRECISION TURRET PUNCHING
- CNC FOLDING UP TO 6.1 M ON 6 AXIS'
- CNC AUTOMATED ROBOT BENDING CELLS
- CNC PLATE ROLLING
- SECTION ROLLING
- TUBE AND PIPE BENDING
- POWDER COATING
- INSERTING
- MACHINING
- RUMBLING AND DEBURRING
- CAD DRAWING AND DESIGN
- WELDING (TIG, MIG, PULSE MIG)
- ROBOT WELDING
- PROJECT MANAGEMENT
- COMPLETE ASSEMBLY SERVICES



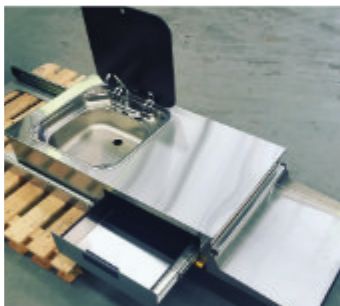
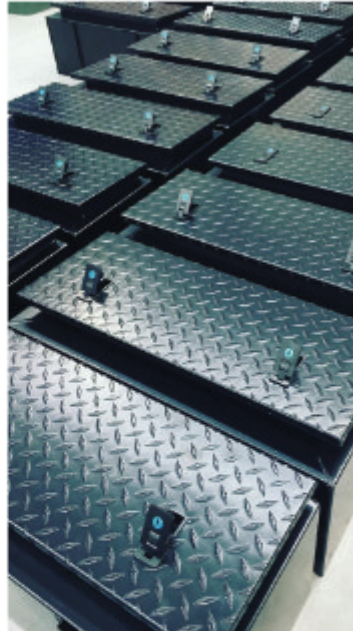
*We ensure every product is powder coated to the highest possible standard utilizing only **Dulux and Interpon** powders.*

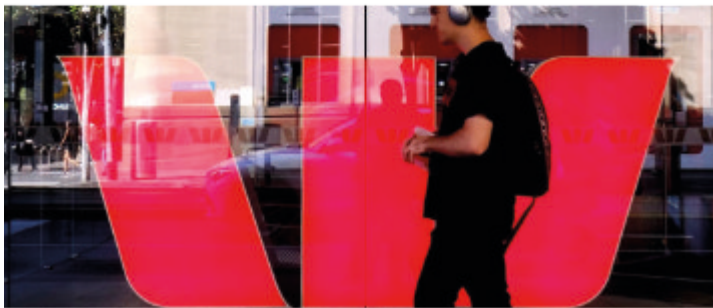
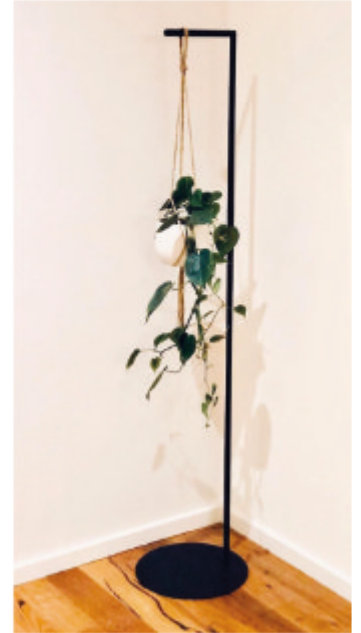


View our work on Instagram



@metaltexaustralia

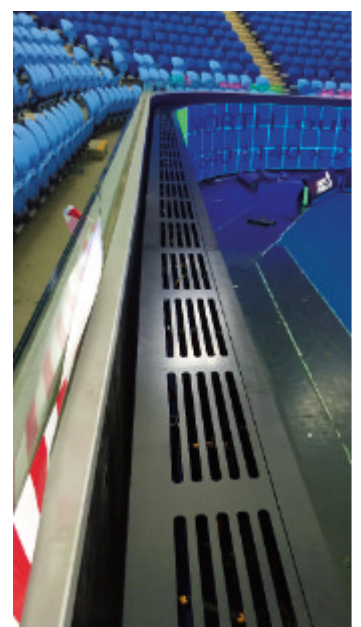




View our business profile on LinkedIn



@metaltex-australia



Design & Drafting

At Metaltex we strive for excellence in building client relationships and delivering services. A large portion of our partners are repeat clients who have complete confidence in the quality that we provide.

To meet customer demands and expectations, we've assembled an experienced design team consisting of highly trained engineers and fabricators supported by first class production staff, enabling us to provide a complete solution from concept to finished product.

Metaltex's design services incorporating advanced CAD/CAM technologies utilises the following systems:

RADAN

AUTOCAD

SOLIDWORKS

PRO ENGINEER

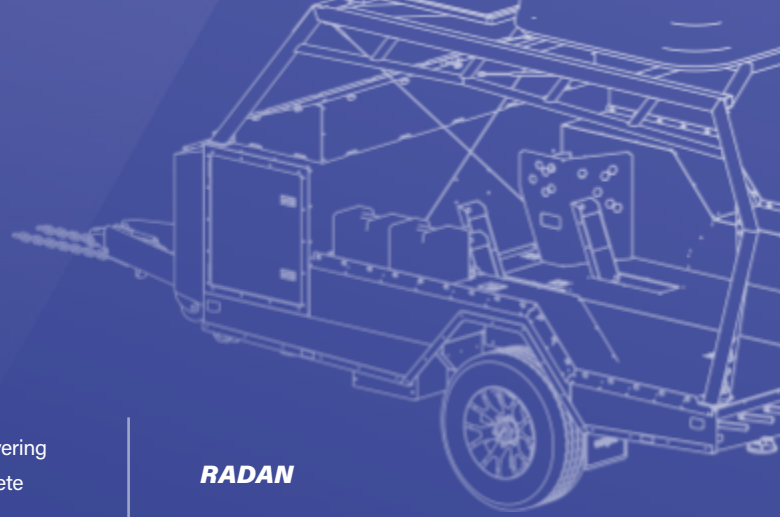
INVENTOR

EDRAW

At Metaltex we utilize **Hexagon Workplan** in addition to Radan, Radquote and Radbend. This combination of ERP/MES and RADAN Programming software ensures we remain industry leaders when it comes to project management and Industry 4.0.

In addition to this software we have live shop floor visuals that enables us to monitor:

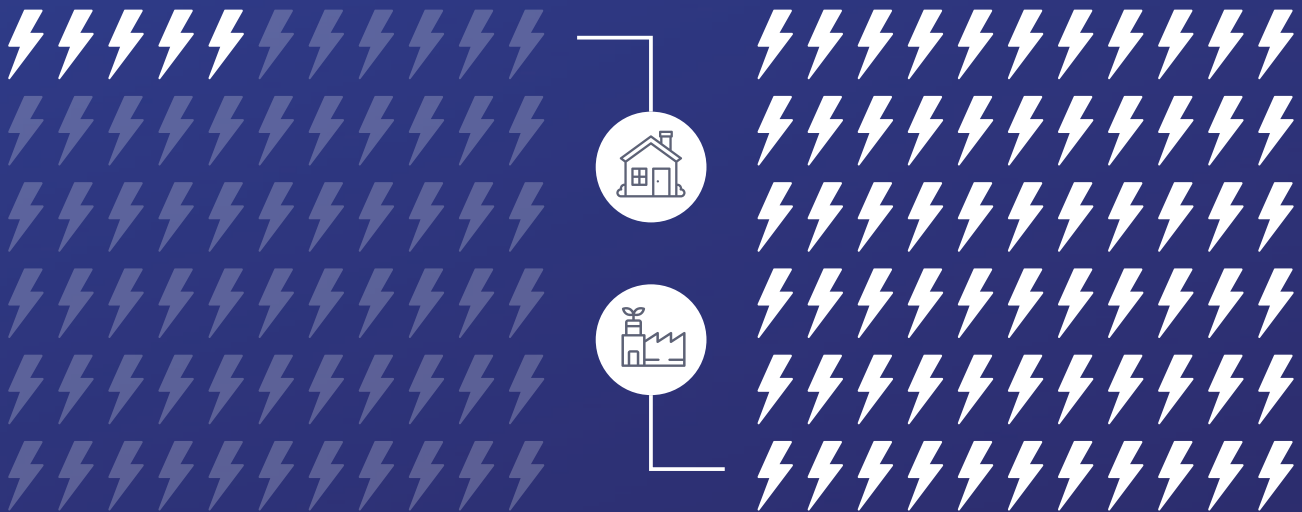
- AREA PRODUCTION
- MATERIAL ALLOCATION
- MACHINE EFFICIENCY
- CLIENT DELIVERY BOARD



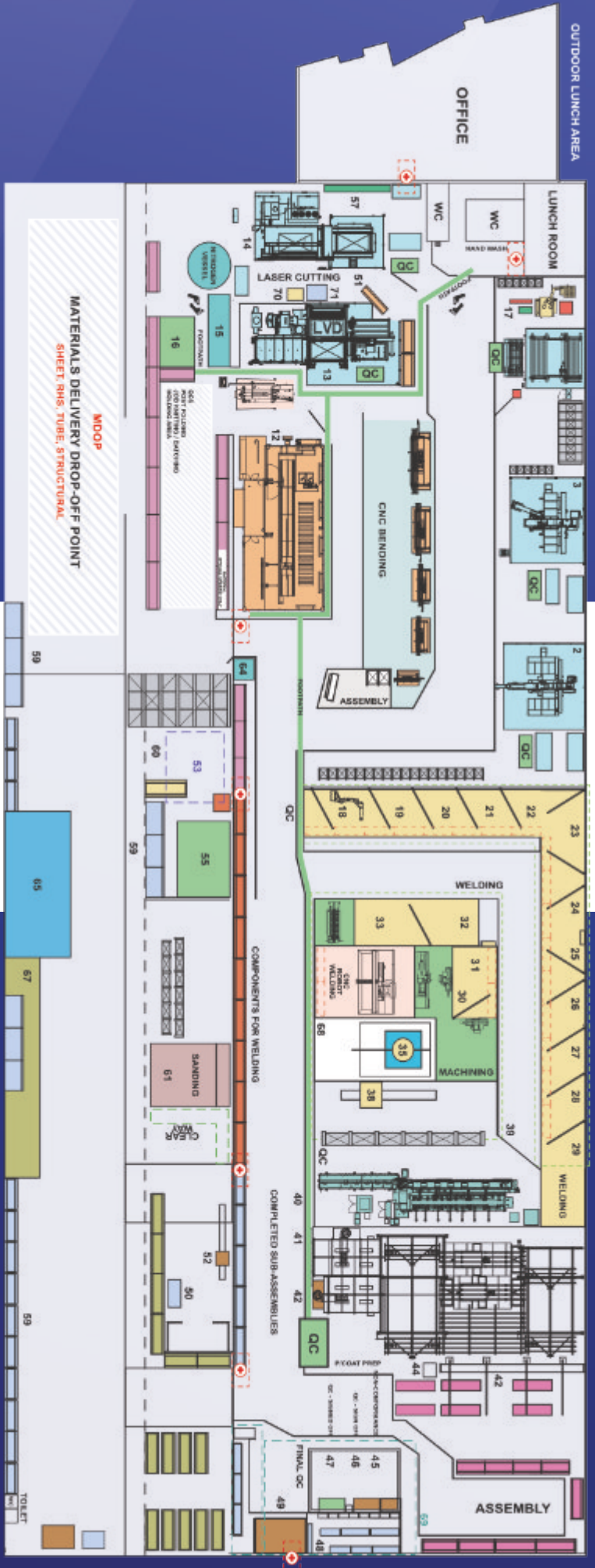


Solar Manufacturing

Metaltex factory has a 66kW/h rooftop solar energy system installed with goals to minimize carbon footprint and significantly reduce day-to-day operations electricity consumption. Renewable energy utilisation brings Metaltex in the family of today's Smart Factory movement and at the pinnacle of contemporary Solar Manufacturing solutions.



Average household 5kW/h solar system compared to the Metaltex 66kW/h solar system.



Factory Floor Plan 2025

As Industry demands and expectations increase so too will the investment in our capabilities, facilities and services. We will continue to invest time, energy and money in order to broaden and expand our client base. To learn more about our frequent equipment and standards upgrades, visit our news section at www.metaltex.com.au/news.

The 8D Approach

Metaltex implements the 8D approach in problem solving as a proven way of increasing manufacturing output quality and creating a better work environment for our staff.

D0

PLAN

D1

CREATE A TEAM

D2

DEFINE AND DESCRIBE THE PROBLEM

D3

CONTAIN THE PROBLEM

D4

IDENTIFY, DESCRIBE, AND VERIFY ROOT CAUSES

D5

CHOOSE CORRECTIVE ACTIONS

D6

IMPLEMENT AND VALIDATE CORRECTIVE ACTIONS

D7

TAKE PREVENTIVE MEASURES

D8

CONGRATULATE YOUR TEAM

Learn more at www.metaltex.com.au/about-us



Quality
ISO 9001
SAI GLOBAL

QUALITY POLICY
ISO 9001:2015

● **D0: Plan**

Plan for solving the problem and determine the prerequisites.

● **D1: Use a team**

Select and establish a team of people with product/process knowledge.

● **D2: Define and describe the problem**

Specify the problem by identifying in quantifiable terms the who, what, where, when, why, how, and how many (5W2H) for the problem.

● **D3: Develop interim containment plan; implement and verify interim actions**

Define and implement containment actions to isolate the problem from any customer.

● **D4: Determine, identify, and verify root causes and escape points**

Identify all applicable causes that could explain why the problem occurred. Also identify why the problem was not noticed at the time it occurred. All causes shall be verified or proved, not determined by fuzzy brainstorming. One can use 5 Whys and cause and effect diagrams to map causes against the effect or problem identified.

● **D5: Choose and verify permanent corrections (PCs) for problem/nonconformity**

Through preproduction programs, quantitatively confirm that the selected correction will resolve the problem for the customer.

● **D6: Implement and validate corrective actions**

Define and implement the best corrective actions (CA).

● **D7: Take preventive measures**

Modify the management systems, operation systems, practices, and procedures to prevent recurrence of this and all similar problems.

● **D8: Congratulate your team**

Recognise the collective efforts of the team. The team needs to be formally thanked by the organisation.

Only by providing an outstanding service and product quality, will we achieve our aims of long term success and sustained improvements. All personnel within the company are responsible for the quality of their work. The company provides training and has established systems to assist all personnel to achieve the standards required.

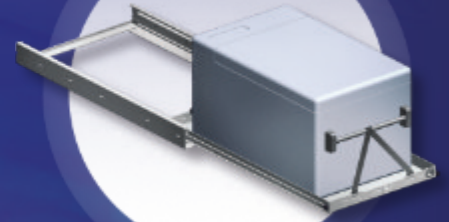
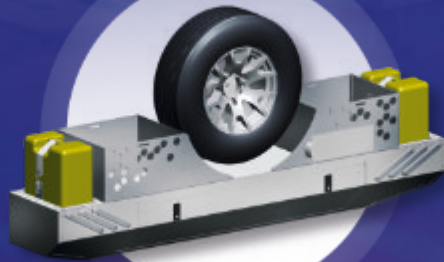
While we endeavour to produce work and offer a service that we can be proud of, we have to recognise that we don't always achieve our own standards. When a customer complains, we are committed to investigating the complaint and will do our best to put right all justified complaints. The policy, organisation and procedures necessary to achieve the compulsory requirements are described in our quality management system.

The Quality Manager is responsible for monitoring the quality system and reports regularly to the Senior Management team on the system's implementation, status and effectiveness. The objectives of the company are set out in the quality manuals/business plan. Objectives for individual jobs are to carry out the works to the satisfaction of the client and in accordance with the contract as agreed with the client.

DANIEL PIETERSON

Company Director





18-24 Evolution Drive Dandenong
South, 3175 VIC



+61 (03) 9706 6106



sales@metaltex.com.au



www.metaltex.com.au



@metaltexaustralia



@metaltex-australia