



Munich Personal RePEc Archive

Central bank digital currency and cryptocurrency in emerging markets

Le, Anh H.

20 September 2022

Online at <https://mpra.ub.uni-muenchen.de/114734/>
MPRA Paper No. 114734, posted 03 Oct 2022 09:31 UTC

Central bank digital currency and cryptocurrency in emerging markets

Anh H. Le*

This Version: 20th September, 2022

Abstract

Blockchain technology has opened up the possibility of digital currency, smart contracts and much more applications including the launch of central bank digital currencies (CBDC). However, literature about the effect of CBDC with the presence of cryptocurrency for an emerging market economy seems to be left behind. In this paper, we introduce a New Keynesian - Dynamic Stochastic General Equilibrium (NK-DSGE) model to examine the implications of CBDC and cryptocurrency in an open economy for emerging markets. In our model, cryptocurrency is implemented as a form of deposit in banks where bankers can also receive deposits from abroad. Lastly, CBDC is introduced as a payment and saving instrument. We find that cryptocurrency has a crucial role in banking sectors and a significant effect on the dynamic of foreign debt which is deeply important for emerging markets. We also conduct optimal monetary policy under different scenarios. Hence, we uncover that a flexible rate in CBDC can affect the responses of the monetary rate and can reinforce the conventional monetary policy to achieve the central bank's targets.

Keywords: Central bank digital currency, Cryptocurrency, Open-economy, Financial frictions, Optimal monetary policy

JEL Codes: E50, F30, F31, G15, G18, G23

*Goethe University Frankfurt, haanh.le@hof.uni-frankfurt.de

1 Introduction

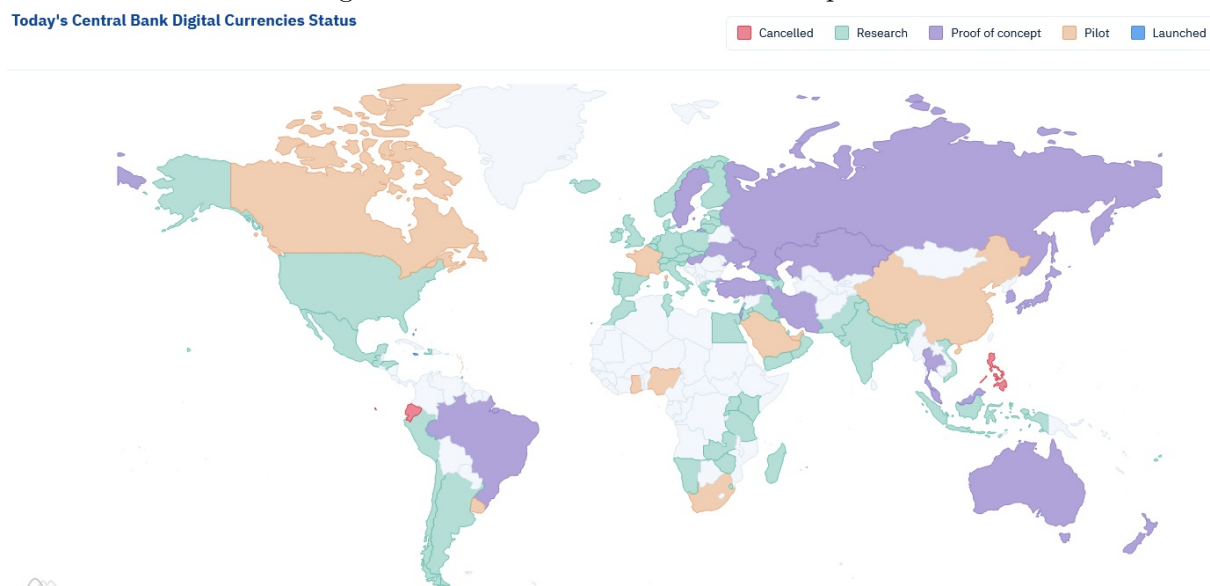
In the last 10 years, we have observed a significant development of digital currencies which are backed by blockchain technology. Blockchain technology opens up the possibility of decentralized digital currencies which are commonly called cryptocurrency or digital money. Currently, the size of the cryptocurrency market reaches more than 1000 billion USD and continues to grow. However, there are several issues with using cryptocurrencies such as Bitcoin and others from the macroeconomic and financial stability perspective. The main concerns include the high volatility in price, liquidity and credibility of issuers. Holders of cryptocurrencies also wobble the value of their savings following the cryptocurrency volatility in price, which will then lead to fluctuations in consumption, investment and hours worked. Thus, it causes macroeconomic fluctuation and financial instability.

Furthermore, the decentralisation of cryptocurrency allows issuers of their cryptocurrency to have full control of the cryptocurrency supply. This creates a moral hazard problem between issuers and buyers. To hedge the volatility of cryptocurrency, another form of cryptocurrency named stablecoin has been created to create a safe “parking space” for traders. However, after the crash of Terra USD and Luna, stablecoin might also be subject to some concerns related to the issuer’s decisions. Therefore, the regulation of crypto is highly recommended by the IMF to many countries ([IMF \(2020b\)](#), [IMF \(2020a\)](#)).

Central banks, within their mandate, have a responsibility to control price stability as well as ensure financial stability, and they can only do this through their fiat currency or financial regulations on fiat currency-related instruments. However, cryptocurrencies or crypto assets, due to their nature of decentralization, are not controlled by central banks or central institutions. A potential solution for this matter is the introduction of central bank digital currencies (CBDC). In nutshell, CBDC are digital tokens and have no difference compared to cryptocurrencies except for being controlled by central banks. If stablecoin is regulated, the differences between CBDC and stablecoin are negligible. As a result, central banks in both developed and emerging market economies are studying

the optimal adoption of CBDC intensively. According to [Auer et al. \(2021a\)](#), more than 86% of central banks are doing research on the advantages and disadvantages of issuing CBDC. Among many central banks who are actively conducting research on this matter, some remarkable examples include China’s Digital Currency Electronic Payment from The People’s Bank of China (PBOC) and the Digital Euro from The European Central Bank (ECB) as well as the Digital Dollar—or Fedcoin from The Federal Reserve (FED). Having said that, looking at Figure 1, we can see that most of the countries are working intensively on their CBDC. Until now, only the Bahamas and Nigeria have already issued their own CBDC. Nevertheless, the optimal design for CBDC and its effects on the economy are still studied intensively.

Figure 1: Global status of CBDC development



Source: CBDC Tracker (cbdctracker.org)

Among many theoretical models about digital currency (both cryptocurrency and CBDC) , some of them includes [Auer and Böhme \(2020\)](#), [Auer et al. \(2021a\)](#), [Auer et al. \(2021b\)](#), [Agur, Ari and Dell’Ariccia \(2022\)](#), [Schilling and Uhlig \(2019\)](#) [Benigno \(2019\)](#), [Brunnermeier and Niepelt \(2019\)](#), [Ikeda et al. \(2020\)](#), [Kumhof et al. \(2021\)](#), [Minesso, Mehl and Stracca \(2022\)](#), [Kumhof and Noone \(2018\)](#), [Kumhof et al. \(2021\)](#), [Engert and Fung \(2017\)](#), [Fernández-Villaverde et al. \(2021\)](#). The main focuses of these papers are the macroeconomic effect of CBDC and optimal designs for banking. However, most papers

concentrate on the view of the large economies such as the U.S. and EU but leave a gap in the literature for the implication for the small emerging economy as well as developing countries. According to [Chen et al. \(2022\)](#), central banks in developing countries also join the race of issuing their own CBDC following the FED or ECB. However, as pointed out by [IMF \(2020c\)](#), emerging market and developing economies need some distinguished features in dealing with policy challenges which are called Integrated Policy Framework by the IMF. Thus, studying the implications of CBDC in emerging markets also requires modifications in the model structures modelling. Hence, this paper is aimed to fill the gap in the literature on CBDC as well as cryptocurrencies for emerging markets.

The main goal of this paper is to study the implications of CBDC in an emerging market economy with financial sectors and the presence of a cryptocurrency. Thus, the paper contributes to the fast-growing literature on CBDC as well as cryptocurrencies. I conduct the study by building up the small open economy model of [Aoki, Benigno and Kiyotaki \(2016\)](#). However, this model differs in some aspects. First, I include the presence of cryptocurrencies similar to [Sockin and Xiong \(2018\)](#) and [Asimakopoulos, Lorusso and Ravazzolo \(2019\)](#). However, I allow the banking sector to take cryptocurrencies as a deposit following [Murakami and Viswanath-Natraj \(2021\)](#). This extension aims to reflect the fact that the banking sector started incorporating cryptocurrencies into its balance sheet. Moreover, due to strict capital control policies in many emerging markets, I assume that the trade in foreign currency-denominated assets (i.e deposits or bonds) can only be conducted through the banking system but not the households. Second, I introduce CBDC as a digital instrument inside a menu of the monetary assets following [Agur, Ari and Dell’Araccia \(2022\)](#) and [Minesso, Mehl and Stracca \(2022\)](#). Besides the concerns on decentralization, CBDC differs from cryptocurrencies in the sense that cryptocurrencies are mainly considered financial assets for investment purposes rather than a payment instrument for daily activities. The digital aspect of CBDC brings up two main advantages: it has no storage cost compared to cash and can be mounted up easily. Also, due to the nature of CBDC, we can consider it as a mixture of a payment instrument and a financial asset. First, CBDC can be liquid anytime similar to cash. Second, it also

has features such as bonds and deposits as it can be a saving asset with an interest rate. Third, it is perfectly safe in the sense that it is backed by central banks. Therefore, it is not subject to a decentralized risk such as the issuer of digital assets can control the supply for their benefit. Lastly, CBDC is also not subject to partial financial risks such as bank deposits. As pointed out by [Keister and Monnet \(2020\)](#), CBDC might be helpful for the bank run scenario by central bank credibility. Hence, the CBDC is particularly useful during financial distress with liquidity problems.

In this model, the central bank issues cash and a CBDC, which can be used for payment and distributed synchronously. Moreover, our model tries to include as many technical features in CBDC design as possible especially the hybrid feature of using for payment and saving. However, I leave the possibility for households to hold foreign CBDC out of the model. We calibrate our model using the parameter assumptions of [Aoki, Benigno and Kiyotaki \(2016\)](#) and [Minesso, Mehl and Stracca \(2022\)](#). In general, with this model, I try to address the following questions.

- 1) How does the CBDC affect macroeconomic dynamics?
- 2) Are the designs of CBDC matter for the economy?
- 3) What is the effect of CBDC on the banking sector with foreign debt?
- 4) What are the effect of CBDC and cryptocurrency in emerging markets?

The results of this paper shed some light on a growing body of literature on digital assets, CBDC. Some of these results are in line with the existing literature. In particular, I also find that the introduction of CBDC does not affect the domestic macroeconomic variables significantly when we fix the return on CBDC as 1. With the fixed return of CBDC as 1, we assume that CBDC is only used for payment but not for saving. However, different from the results of [Murakami and Viswanath-Natraj \(2021\)](#), I find that allowing bankers to hold cryptocurrencies can mitigate the negative effect of some shocks because the return of cryptocurrency is partly shielded from changes in the policy rate. This allows the banking sectors to have more options in funding sources. The main reason for our contrast can be traced back to the fact that I implement a different form of the utility function and assume the household can hold cash, CBDC and cryptocurrency at

the same time compared to [Murakami and Viswanath-Natraj \(2021\)](#). This gives rise to a substitution effect for households in responding to shocks. Surprisingly, with CBDC and cryptocurrencies, we observe significant changes in the dynamic of foreign debt. Cryptocurrency and CBDC seem to help reduce the dependence on foreign debt which is important for an emerging market economy. However, the model is not able to depict the high volatility of cryptocurrency. Thus, our cryptocurrency should be referred to as a stablecoin and our results should be considered with caution. Moving forward, alternative designs of CBDC reveal many more interesting observations. I find that CBDC can provide an additional tool for central banks and sustain the movement of the nominal rate in achieving the central bank's targets. Last but not least, a flexible rate in CBDC return can also affect the responses in the banking sector. To the best of my knowledge, there is yet a model to include CBDC and cryptocurrency for an emerging market model with financial frictions.

Related literature: Various studies have studied the implications of cryptocurrencies and CBDC. Because the body of literature is too vast to enumerate, I can only provide a partial list.

In cryptocurrency, most of the theoretical models are the partial equilibrium and asset-pricing models. [Böhme et al. \(2015\)](#) presents a non-technical paper to sum up cryptocurrency's principles and properties. They also discuss potential risks and issues of cryptocurrency. [Fernández-Villaverde and Sanches \(2019\)](#) study the competition among privately-issued currencies. [Athey et al. \(2016\)](#) and [Garratt and Wallace \(2018\)](#) study the behaviour and mechanism of Bitcoin-to-Dollar exchange rate. [Schilling and Uhlig \(2019\)](#) present the model with Bitcoin and the U.S. Dollar which allow both currencies to be used for transactions. [Sockin and Xiong \(2018\)](#) build the model with cryptocurrency producers for clearing conditions and allow cryptocurrency to fulfil transactions for goods. [Benigno \(2019\)](#) assume that cryptocurrency can be a global currency. They use a two-country model with a global stablecoin that can be traded freely. The results suggest that the unified interest rate makes the global cryptocurrency and the domestic currency to be indifferent. [Baughman and Flemming \(2022\)](#) study the welfare effects of global

stablecoins which correlate with sovereign currencies. Their results suggest the demand for global stable coins is low which is contradict the findings of [Benigno \(2019\)](#).

In CBDC, the literature has been growing swiftly last 5 years. [Boar, Wehrli et al. \(2021\)](#) provide a survey of CBDC adoption around the world. In the study on CBDC, the first strand is about the effect of CBDC on commercial banks as well as its financial inclusion. Theoretically, CBDC is a hybrid instrument and can serve as an interest-bearing substitute for commercial bank deposits. [Foster et al. \(2021\)](#) and [Andolfatto \(2021\)](#) suggest that the idea of accessing fintech for everyone with CBDC can accelerate financial inclusion and enlarge the digital economy. [Andolfatto \(2021\)](#) also argue that the benefit of CBDC may outweigh the competitive pressure for commercial banks and the situation may end up with an expansion in deposits. [Chiu et al. \(2019\)](#) extend the study of [Andolfatto \(2021\)](#) by allowing commercial banks to hold CBDC to meet their reserve requirements. They find that the return on CBDC has a significant effect on commercial banks' activities. [Fernández-Villaverde et al. \(2021\)](#) study the bank run scenario with CBDC.

The second strand is about the function of central banks with CBDC on monetary policy and financial stability. [Barrdear and Kumhof \(2016\)](#) build an NK-DSGE where newly issued CBDC can be exchanged one-for-one with government debt. They find that CBDC can have a positive effect on GDP growth and mimic the drop in GDP for a liquidity demand shock because it fulfils the need for a flight to safety for households. [Cukierman \(2019\)](#) argue that central banks need CBDC to preserve the effectiveness of monetary policy with the presence of cryptocurrencies. Moreover, it also has a welfare effect on central banks. Nevertheless, [Cukierman \(2019\)](#) does not provide a theoretical model to rationalize arguments. [Schilling, Fernández-Villaverde and Uhlig \(2020\)](#) claim that issuing CBDC cause an impossible trilemma for central banks on efficiency, financial stability and price stability. The paper concludes that only two targets can be achieved at once. [Keister and Monnet \(2020\)](#) also conduct an intensive study about CBDC effects on government policy in periods of financial distress. They claim that CBDC provides an alternative means of payment to bank deposits but is not subject to the risk of bank

runs because CBDC is backed by the central bank. This reduces the severity of the bank run. By appropriately choosing the interest rate on CBDC to make it more attractive in times of stress, the central bank can stabilise the financial system better and respond more effectively.

The remainder of the paper is organized as follows. Section 2 characterizes a model for an open economy with CBDC, cryptocurrency, financial frictions, nominal rigidities, and foreign debt in banking sectors. Section 3 analyzes the simulation results. Section 4 concludes.

2 Model

Below I introduce the baseline model for the paper. In general, the main framework is a NK-DSGE model with financial frictions under the style of [Gertler and Kiyotaki \(2010\)](#) and [Gertler and Karadi \(2011\)](#) (henceforth GK). I extend the banking sector following [Aoki, Benigno and Kiyotaki \(2016\)](#) (henceforth ABK) in which we allow a possibility of funding from foreigners in the financial sector. Moreover, we allow bankers to hold cryptocurrencies on their balance sheets. The model focuses on modelling financial intermediaries in which bankers face endogenously determining balance sheet constraints. Compared to the GK model, our model does not have capital utilization, quantitative easing rule or price indexation.

On the household side, different from [Murakami and Viswanath-Natraj \(2021\)](#), we assume there is only one type of representative household that has physical cash, cryptocurrencies, and CBDC in their utility function. The representative household consists of a continuum of households of measure unity following DSGE literature. In each period, we assume the portion $(1 - f)$ of the population are workers, and the other portion f are bankers. Each banker remains their work in the banking sector with probability χ in the following period. Therefore, in every period, $(1 - \chi)f$ bankers become workers. This is important to prevent banks from accumulating an infinite amount of net worth, making financial frictions irrelevant. Because we also assume a fraction of $(1 - \chi)f$

workers choose to be bankers every period, the proportion of bankers in the population remains unchanged. In banking sectors, each of them runs a bank and their profits go to the households. Deposits from the households are assumed to go to banks that the households do not own. Lastly, we assume that each household shares the idiosyncratic risk. The creation of cryptocurrency is modelled following [Sockin and Xiong \(2018\)](#) and [Asimakopoulos, Lorusso and Ravazzolo \(2019\)](#). Each period corresponds to a quarter. In a nutshell, the model includes six types of agents: households, banking sectors, intermediate goods producers, retailers, capital producers, cryptocurrency producers, and a government that conducts monetary policy following a standard Taylor rule and has CBDC and cash as her liability. As the paper relies heavily on the structure of ABK, we use the same notations as ABK when it is convenient.

2.0.1 Households

First, different from the GK model, households can also directly invest in firms' equity with an extra cost $\chi^h(K_t^h, K_t)$. This cost can be interpreted as management cost for their investment. At the same time, bankers can also hold equity. For simplicity, we assume the function form of the cost as, $\chi^h(K_t^h, K_t) = \frac{\varkappa^h}{2} \left(\frac{K_t^h}{K_t} \right)$. Because we assume that bankers are more productive in conducting investment, a positive parameter \varkappa^h governs the disadvantage of households relative to professional bankers in financing firms.

Households can hold deposits into banking sectors, D_t , cryptocurrency, $Crypt_t$, and CBDC, DC_t . Following [Asimakopoulos, Lorusso and Ravazzolo \(2019\)](#), [Murakami and Viswanath-Natraj \(2021\)](#) and [Minesso, Mehl and Stracca \(2022\)](#), I include all three instruments inside the utility function. Follow [Woodford \(2003\)](#), households can derive utility from liquidity service because they need liquid instruments for payment. Hence, utility parameters follow their liquidity level.

Stem from [Agur, Ari and Dell'Ariccia \(2022\)](#) and [Minesso, Mehl and Stracca \(2022\)](#), we assume that only cash and CBDC are used for paying for consumption goods. Hence, households encounter a Hotelling linear city where they minimize the spread between the available forms of liquid tools for payment and their preferences. First of all, we assume

the representative agent as the household¹. However, the representative household is a unit continuum of atomistic households with heterogeneous preferences on payment instruments which are uniformly distributed. Intuitively, a part of the population prefers cash relative to CBDC and the other part prefers CBDC relative to cash. For example, younger people might like CBDC more as it can be used for many digital services while other people might like using cash because of its anonymity. For getting those features into our model, we implement a utility loss function where the function depends on the share of instruments households like the least. For example, if a person dislikes using cash but moves to use cash as the return on CBDC decreases, they face a utility loss for rebalancing their payment method.

Similar to [Minesso, Mehl and Stracca \(2022\)](#), I introduce the re-balancing payment utility loss function, $\varrho\left(\frac{M_t}{M_t+DC_t}, \Gamma\right)$, and $\varrho(0) = 0$, $\varrho(\cdot)' > 0$, $\varrho(\cdot)'' > 0$. Γ is the function's global minimum and the household's preferred mix of payment instruments. Because we set a global minimum of function as $\left(\frac{M_t}{M_t+DC_t}\right) = \Gamma$, Γ can also be interpreted as the fraction of household members in steady state who prefer cash over CBDC. If the global minimum is achieved, there is no utility loss from using that mix. However, depending on many other factors, a household's optimal decisions might be different from Γ in responding to shocks.

$$U_t = E_t \sum_{t=0}^{\infty} \beta^t \left[\ln \left(C_t - \zeta_0 \frac{H_t^{1+\zeta}}{1+\zeta} \right) - \chi_{DC} \varrho \left(\frac{M_t}{M_t + DC_t}, \Gamma \right) + \mu^C \left(\frac{Cryp_t^{1-\sigma^c}}{1-\sigma^c} \right) \right] \quad (1)$$

s.t.

$$\begin{aligned} & C_t + D_t + B_t + Q_t K_t^h + M_t + DC_t + Cryp_t + \chi^h(K_t^h, K_t) \\ & = w_t H_t + \frac{R_{t-1}}{\pi_t} B_{t-1} + \frac{R_{t-1}^D}{\pi_t} D_{t-1} + (Z_t + \lambda Q_t) K_{t-1}^h + \epsilon^m M_{t-1} + \frac{R_{t-1}^{DC}}{\pi_t} DC_{t-1} + \frac{R_{t-1}^C}{\pi_t} Cryp_{t-1} + \Pi_t \end{aligned}$$

where C_t denotes total consumption, w_t denotes the real hourly wage and H_t is total labour, K_{t-1}^h stands for the physical capital at time t, R_{t-1}^D is the risk-free nominal

¹Allowing for heterogenous agents in the sense of preference is another approach to model the heterogeneity in preference of payment instruments

interest rate for deposits calculated using available information at time t , and Π_t is total transfers from either the government or firms (profit). R_{t-1}^{DC} is the CBDC nominal interest rate and R_{t-1}^C is the return on cryptocurrency. ϵ^m is the storage cost for holding cash. Z_t and Q_t denotes productivity and price of household capital respectively.

2.1 Production Sectors

$$Y_t(i) = \Gamma_t(i), \quad (2)$$

where $Y_t(i)$ is the combination of an intermediate input using differentiated intermediate goods. The CES aggregator of all retail products and a demand function of the representative final-good firm for the generic input i is the following:

$$Y_t = \left[\int_0^1 Y_t(i)^{\frac{\epsilon-1}{\epsilon}} di \right]^{\frac{\epsilon}{\epsilon-1}} \quad (3)$$

$$Y_t(i) = \left(\frac{P_t(i)}{P_t} \right)^{-\epsilon} Y_t \quad (4)$$

Because the profits for final-good producers are zero in equilibrium, it implies the relationship between the price level and retail prices as:

$$P_t = \left[\int_0^1 P_t(i)^{1-\epsilon} di \right]^{\frac{1}{1-\epsilon}} \quad (5)$$

Retailer (i) chooses $P_t(i)$, expressed in terms of the domestic CPI, to maximize her future discounted profit.

$$E_t \sum_{t=0}^{\infty} \beta^t \frac{\lambda_t}{\lambda_0} \left[\frac{P_t(i) - mc_t}{P_t} Y_t(i) - \frac{AC_t(i)}{P_t} \right] \quad (6)$$

with mc_t is the marginal costs of the retail sector and adjustment costs for setting prices are defined as:

$$AC_t(i) = \frac{\Omega_P}{2} \left(\frac{P_t(i)}{P_{t-1}(i)} - \bar{\pi} \right)^2 P_t Y_t \quad (7)$$

A change in retail prices requires quadratic adjustment costs $AC_t(i)$ in nominal term à la [Rotemberg \(1982\)](#) where they change prices with respect to $\bar{\pi}$. The NK Philips curve is expressed as:

$$mc_t = p_t \left(\frac{\epsilon - 1}{\epsilon} \right) + \frac{\Omega_P}{\epsilon} (\pi_{Ht} - \bar{\pi}) \pi_{Ht} - \beta \left(\frac{\lambda_{t+1}}{\lambda_t} \pi_{H,t+1} (\pi_{H,t+1} - \bar{\pi}) \frac{p_{H,t+1} Y_{H,t+1}}{p_t Y_t} \right) \quad (8)$$

Given symmetric assumption, the aggregate output, Y_t can be written in the following form:

$$Y_t = A_t \left(\frac{K_{t-1}}{\alpha_K} \right)^{\alpha_K} \left(\frac{X_t}{\alpha_X} \right)^{\alpha_X} \left(\frac{H_t}{1 - \alpha_K - \alpha_X} \right)^{1 - \alpha_K - \alpha_X} \quad (9)$$

where K_{t-1} , X_t and H_t are aggregate capital stock, imported materials and labour from households. To ensure model solution, we consider K_{t-1} as cumulative capital predetermined by the end of the $t - 1$ and is used for production at time t

Instead of allowing households to produce capital, in line with [Gertler and Kiyotaki \(2010\)](#), [Gertler and Karadi \(2011\)](#) and ABK, capital producers purchase the final goods and non-depreciated capital to produce capital goods which are bought later by intermediate firms. However, she is subject to an investment adjustment cost.

$$\max E_t \sum_{t=0}^{\infty} \beta^t \frac{\lambda_t}{\lambda_0} [q_t K_t - (1 - \delta) q_t K_{t-1} - I_t] \quad (10)$$

s.t

$$K_t = (1 - \delta)K_{t-1} + \left[1 - \frac{\kappa_I}{2} \left(\frac{I_t + I}{I_{t-1} + I} \right)^2 - 1 \right] (I_t + I) \quad (11)$$

On the foreign demand, we assume exogenous foreign demand and characterize it as a function of the relative price of the export and foreign income. Intuitively, the foreign demand increases with their purchasing power by either a drop in the cost of the export or an increase in income.

$$EX_t = \left(\frac{P_t}{s_t P_t^*} \right)^\varphi Y_t^* \quad (12)$$

with s_t is the real exchange rate and Y_t^* is exogenous foreign demand from the perspective of the small open economy.

2.2 Financial Intermediates

In this part, we quickly present the banking sector (bankers). Bankers have three sources of funding to make their capital investment to producers. There are domestic deposits, D_t , foreigner deposits, D_t^* , and cryptocurrencies, $Crypt_t$. The foreign deposits are converted into domestic currency with an exchange rate, s_t . However, we assume that borrowing from foreigners is costly in terms of resources to take into risk premium on emerging markets' foreign debt accumulation, $(1 + \frac{\alpha_b}{2})^2$. Hence, the flow of funds constraints for a representative bank are given as follows:

$$\left(1 + \frac{\alpha_b}{2} x_t^2 \right)^2 Q_t K_t^b = N_t + D_t + s_t D_t^* + Crypt_t, \quad (13)$$

As mentioned briefly above, businesses may receive two sources of capital. The first is from the household directly. The second is from the financial sector, K_t^b . Then the net

worth is as follows:

$$N_t = (Z_t + Q_t \lambda) K_{t-1}^b - \frac{D_{t-1} R_{t-1}}{\pi_t} - \frac{s_t D_{t-1}^* R_{t-1}^*}{\pi_t^*} - \frac{Cryp_{t-1} R_{t-1}^c}{\pi_t} \quad (14)$$

2.3 Bankers Optimization

At the beginning of period t , bankers raise funds and purchase assets from the businesses. During the period, the banker decides whether to keep working as a banker (operating honestly) or divert assets. Deciding to keep being a banker means holding capital until the payoffs are realized and the banker fulfils the obligations to creditors. To divert means to secretly divert funds as much as a fraction θ of total assets away from investment in order to consume personally.

We define V_t as the bank's value function, which can be considered as the "market value" of bankers. θ is the fraction of diverted assets. Hence, the incentive constraint is as followed:

$$V_t(N_t) \geq \theta Q_t K_t^b \quad (15)$$

For convenience, the leverage ratio and Tobin's Q ratio are defined respectively.

$$\psi_t = \frac{V_t}{N_t} \quad (16)$$

$$lev_t = \frac{Q_t K_t^b}{N_t} \quad (17)$$

Under a perfect financial market, the incentive constraint always holds with equality to prevent an indefinitely asset expansion. However, in our model, banks are also subject to a terminal wealth maximization problem. Banks maximize the expected terminal wealth which is written in the recursive formulation.

$$V_t(N_t) = \max E_t \Lambda_{t;t+1} [(1 - \sigma)N_{t+1} + \sigma V_{t+1}(N_{t+1})] \quad (18)$$

We rewrite the problem in terms of Tobin's Q maximization².

$$\psi_t = \max_{lev_t, x_t} \left(\mu_t lev_t + \left(1 + \frac{\alpha_b}{2} lev_t^2 x_t \right) v_t + \mu_t lev_t x_t + \mu_t^c lev_t x_t^c \right) \quad (19)$$

s.t.

$$\phi_t \geq \Theta(x_t, x_t^c) lev_t, \quad (20)$$

We define that $\Omega_{t;t+1}$ is the stochastic discount factor of the banker. μ_t is the excess return on capital over home deposits. μ_t^c is the cost advantage of cryptocurrency holdings over home deposits. μ_t^* is the cost advantage of foreign currency debt over home deposits or the deviation from real uncovered interest parity (UIP). v_t is the marginal cost of deposits. All of the above terms are defined as follows.

$$\mu_t = E_t \left[\Lambda_{t;t+1} \left(\frac{Z_{t+1} + \lambda Q_{t+1}}{Q_t} - R_{t,t+1} \right) \right] \quad (21)$$

$$\mu_t^* = E_t \left[\Lambda_{t;t+1} \left(R_{t+1} - \frac{s_{t+1}}{s_t} R_{t,t+1}^* \right) \right] \quad (22)$$

$$\mu_t^c = E_t \left[\Lambda_{t;t+1} (R_{t+1} - R_{t,t+1}^c) \right] \quad (23)$$

$$v_t = E_t [\Lambda_{t;t+1} R_{t+1}] \quad (24)$$

$$\Omega_{t+1} = \Lambda_{t;t+1} (1 - \sigma + \sigma \psi_{t+1}) \quad (25)$$

2.4 Government and Central Bank

The home central bank determines the nominal interest rate with a Taylor rule, targeting CPI inflation and exchange rate stabilisation. Lastly, government expenditure is

²A detailed derivation of banks problem can be found in the appendix

financed by lump-sum tax from households.

$$\ln\left(\frac{r_t}{\bar{r}}\right) = \rho_r \ln\left(\frac{r_{t-1}}{\bar{r}}\right) + (1 - \rho_r) \ln\left(\left(\frac{\pi_t}{\bar{\pi}}\right)^{\phi_\pi} \left(\frac{\Delta e_t}{\Delta e}\right)^{\phi_e}\right) + \epsilon_t^m \quad (26)$$

where $\Delta e_t = \frac{s_t \pi_t}{s_{t-1} \pi_t^*}$

2.5 Parameterisation

As mentioned above, parameter values are taken from [Aoki, Benigno and Kiyotaki \(2016\)](#), [Minesso, Mehl and Stracca \(2022\)](#), [Asimakopoulos, Lorusso and Ravazzolo \(2019\)](#), and [Murakami and Viswanath-Natraj \(2021\)](#). Most of the important values are reported in Table 1. Also, most parameters of the production and household sectors are relatively standard in macroeconomic models. As we have no evidence of elasticity of leverage on cryptocurrency, we set it equal to elasticity to foreign borrowing. For banking sectors, we set ex-ante the steady-state leverage ratio to 4 and spread to 2% annually. This results in proportional transfer to the new bankers to be 0.002 and the fraction of foreign borrowing accounts for 25% of bank assets. In addition, the survival rate of the bankers is set as 0.972.

Notably, we assume the household prefer liquidity asset. We set the cryptocurrency sub-utility parameter to 0.0025. Moreover, as CBDC is assumed to be more efficient, we set $\mu^{DC} = \mu * 1.1$ which means that it is 10% more efficient than cash. The elasticity of substitution will follow the efficiency governing parameters as $\sigma^c = \sigma^m + (1 - \Xi)\sigma^m$ and $\sigma^{DC} = \sigma^m$. Ξ governs the liquidity level of the instrument. As cryptocurrency has a low liquidity level, we set it to 0.25 compared to a benchmark of 1 for cash.

3 Numerical Simulations

This section is aimed to illustrate the quantitative results of the paper. I mainly focus on the dynamic responses to these shocks: productivity shock (TFP), monetary policy shock, and foreign rate shock. I conduct analysis through the impulse response function step by step. First, I focus on the model's dynamics with and without the presence of

cryptocurrencies and CBDC. Second, I focus on the effect of alternative CBDC designs on the economy. Thirdly, I conduct the optimal policy analysis for different versions of our model. Finally, I also provide other results from the model.

Table 1: Calibrated Parameter Values

Parameter	Value	Description
θ	0.401	elasticity of leverage wrt foreign borrowing
θ^c	0.401	elasticity of leverage wrt cryptocurrency
σ	0.94	survival probability
ξ	0.0045	fraction of total assets brought by new banks
\varkappa^b	0.0197	management cost for foreign borrowing
β	0.985	discount rate
ζ	0.333	inverse of Frisch elasticity of labour supply
ζ_0	7.883	inverse of labour supply capacity
\varkappa_h	0.0197	cost parameter of direct finance
α_K	0.30	cost share of capital
α_M	0.18	cost share of imported intermediate goods
λ	0.98	one minus the depreciation rate
η	9	elasticity of demand
ω	0.667	Calvo parameter of price stickiness
κ_I	0.667	cost of adjusting investment goods production
φ	1.000	price elasticity of export demand
ω_P	52.450	slope of NKPC
χ_{DC}	0.5	Loading of payment instrument preferences in the utility function
ρ_{DC}	0.01	Substitution between payment instruments
ϵ^m	1	storage cost
μ	0.5	Cash efficiency
μ^{DC}	$\mu * 1.1$	CBDC efficiency
μ^C	0.0025	Crypto efficiency
\bar{A}	1.000	steady state productivity
ρ_i	0.800	Taylor rule persistence
ϕ_π	1.500	Taylor rule response to inflation
$\phi_{\delta e}$	0.3	Taylor rule response to depreciation rate
ρ_A	0.900	TFP persistence
ρ_{R^*}	0.900	foreign interest rate persistence
ρ_{Y^*}	0.900	foreign income persistence
σ_i	0.0025	standard deviation of interest rate shock
σ_{i^*}	0.0025	standard deviation of foreign interest rate shock
σ_A	0.01	standard deviation of TFP shock

3.1 Baseline Results

First, we consider the effect of a 1% expansionary shock on total productivity in the domestic economy. A positive TFP shock creates an expansion of output on impact.

Then, we investigate the effects of the introduction of CBDC and the presence of cryptocurrency in the banking sector. For doing that, I compare results from models in which we have different combinations of available assets in household hands. The Base model is our model with crypto, cash and CBDC. Lastly, the return on CBDC for the Base model will be fixed.

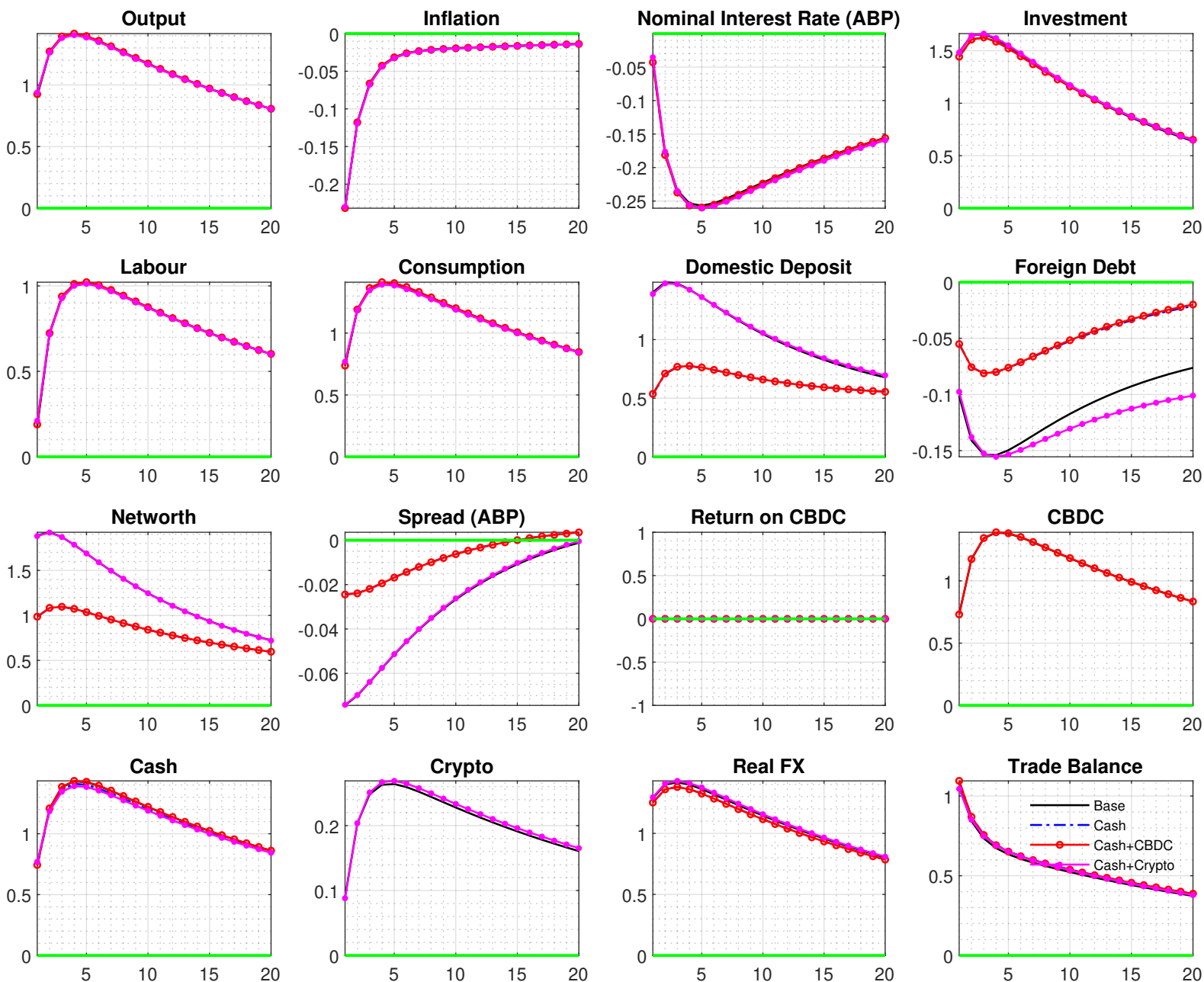


Figure 2: Response of selected variables to a 1% expansionary total factor productivity shock in the domestic economy

The reaction of variables to the positive TFP shock is standard following other NK-DSGE models. Similar to output responses, investment and consumption increase follow-

ing the TFP shock. Besides, working labour decreases following a positive productivity shock. To unload extra production as the production is more efficient, prices of goods decline which pushes inflation down. The central bank reacts to deflationary pressures by adapting the nominal interest rate downwards. Hence, the economy goes through a deterioration of its inflation rate. However, through UIP, the exchange rate is depreciating which makes the imported goods more expensive relative to domestic goods. Therefore, as can be seen from an increase in the trade balance, exports are growing much faster than imports. This diminishes the effect of increasing imported prices (via exchange rate depreciation) on the composition of CPI prices. The investment and consumption increase persistently after the shock but the trade balance only increases temporarily and dissipates gradually over time. For the banking sector, the net worth of banks increases on impact. An increase in total productivity level improves intermediary balance sheets, which helps to reduce the spread even further. This results in a lower credit spread rate in the market due to a lower profit pressure for banks and high economic activity.

As can be seen from Figure 2, the introduction of CBDC seems to not generate huge differences compared to the model with only cash which is similar to the finding of [Minesso, Mehl and Stracca \(2022\)](#). As we impose CBDC and cash as payment instruments, this should not cause much difference in responses to shocks in other sectors. However, we find that the introduction of cryptocurrency can bring a significant effect on the banking sector. Both the net-worth and spread react mostly double compared to the model without cryptocurrency. Moreover, foreign debt in the banking sector also reacts much stronger compared to the model with only cash and CBDC. This may raise the concern of higher volatility in financial sectors for adapting cryptocurrency as an official financial instrument. This fact was not observed in [Murakami and Viswanath-Natraj \(2021\)](#) which also implements cryptocurrencies in the ABK model. This paper differs from [Murakami and Viswanath-Natraj \(2021\)](#) by allowing only one kind of household that can decide between cash, CBDC and cryptocurrencies. Also, we implement a different setup of cryptocurrency inside the utility function. Hence, this might give rise to the responses of the financial sector.

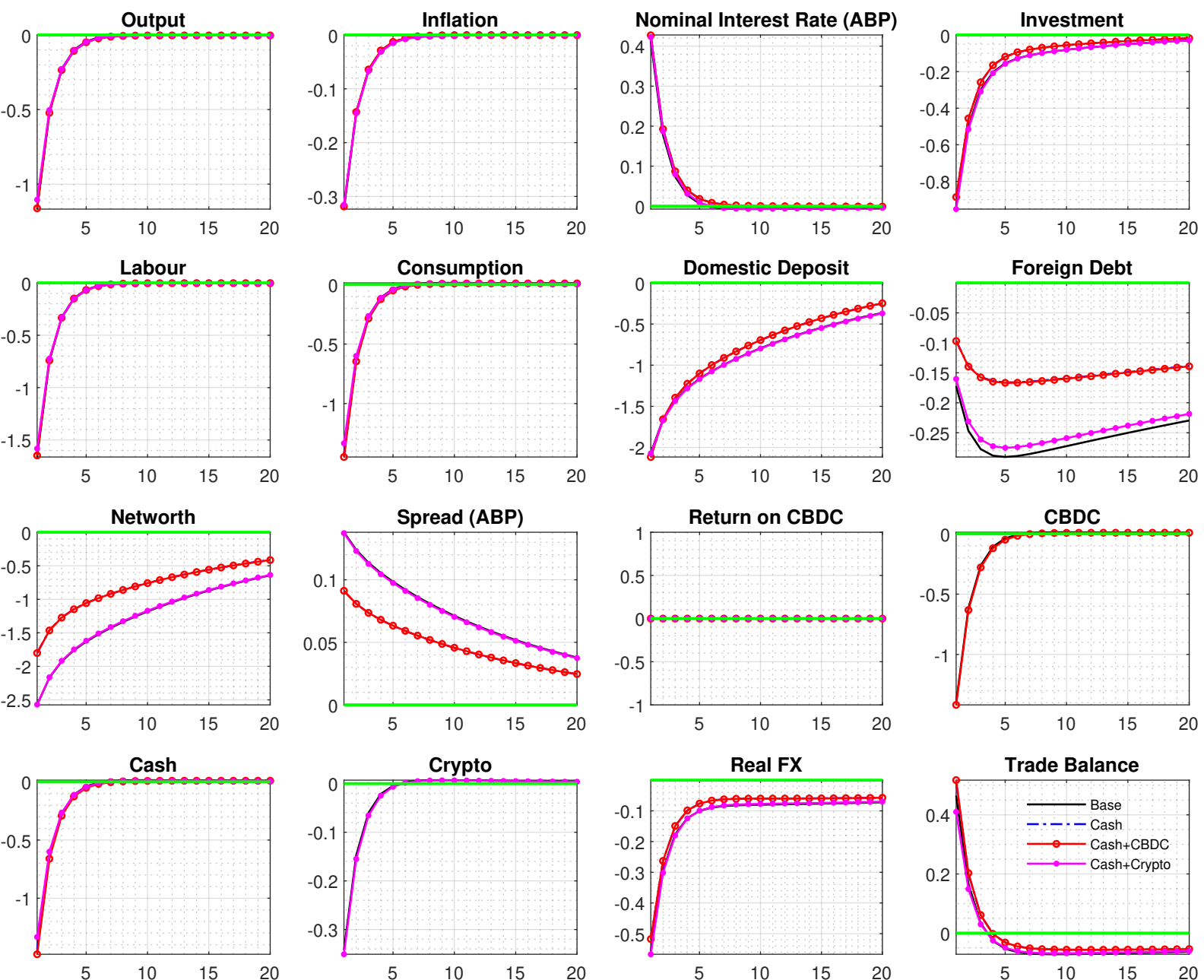


Figure 3: Response of selected variables to a 25 basis point contractionary monetary policy shock in the domestic economy

Now, we consider the effect of 25 basis points contractionary shock of domestic monetary rate in Figure 3. Again, similar to TFP shock, the responses are also in line with other models. The shock leads to a contraction in output on impact. Contraction of output shows the standard recession effect by decreasing both investment and consumption and pushing down the inflation rate. This shock decreases consumption as it affects transmit through wealth effects as well as inter-temporal effects. As the real interest rate also increases, it reduces investment. The asset price, Tobin's q , drops significantly. The

friction is between depositors (foreign and domestic) and bankers. First, banks receive deposits from households. Combined with their current net worth, they make a profit by lending this to intermediate firms. With an increase in monetary rate, both capital good value and investment surge because a higher nominal means that rental income of capital is discounted heavily. However, banks have to suffer from the fluctuation in the asset price themselves. Hence, this causes an on-impact decrease in bank net worth. Compensating for the risk of increasing leverage, banks need to increase profit by raising the lending rate to intermediate firms which increases the spread. However, due to a decreasing path of banks' leverage, the spread rises on impact and decreases over time. Therefore, households expect a decrease in bank future profit. Intuitively, the banking sector is assumed to be competitive. Banks with generous net worth can expand their loan capacity to firms. Therefore, loans decrease via two channels. Firstly, due to decreasing future profit, bankers may choose to divert. Households have to force the bank to restrict their loan supply. Secondly, firms also reduce their demand for loans due to economic activity on the demand side. In total, total loan drops. As the result, the asset price and investment dropped dramatically.

Similar to the TFP shock, responses in the banking sector are stronger for a model with cryptocurrency which can be mainly traced back to the decrease in foreign debt. Due to the availability of cryptocurrency financing, this fetches in the substitution effect on sources of funding for banks. As we assume that cryptocurrencies are affected indirectly by monetary policy, the substitution effect kicks in because the effect of an interest rate hike is higher for foreign debt with the reaction of the exchange rate. Overall, the model shows that there are no big differences in the introduction of CBDC in the domestic economy. However, allowing cryptocurrencies as a type of deposit creates substitution effects among sources of funding for the banking sector. From our model predictions, we see that cryptocurrency may amplify the responses of banking sectors. Therefore, it gives rise to concern about regulating cryptocurrency in the financial sector.

Finally, following strong empirical evidence on the "Global Financial Cycle" by [Miranda-Agrippino and Rey \(2020\)](#), [Miranda-Agrippino, Nenova and Rey \(2020\)](#), the foreign mon-

etary shocks are particularly important for emerging markets and developing countries because the financial markets became progressively more integrated internationally over the past decades. Moreover, due to post-Covid high inflation all around the world, central banks have begun their race on raising the monetary rate. This imposes a great challenge for emerging markets. Hence, we will look at our model responses to the increase in foreign (global) interest rates.

Now, we consider a 25 basic point shock of foreign interest rate. First, the shock cause contraction in the domestic output. As the domestic currency loses its attraction, the real exchange rate depreciates by around 2%. The real exchange rate depreciation boosts export mostly through an expenditure switching effect because of the positive price elasticity of export demand. This should sustain the output by the aggregate demand. However, the depreciation in the exchange rate raises the inflation rate by increasing the price of imported goods. The central bank reacts to inflationary pressure and exchange rate stabilisation by raising the interest rate by around 0.6% annually. Consumption drops follow the increase in saving rate. Even though the high inflation environment helps to reduce the real burden of home-currency-denominated debt, the fall in asset price followed by an interest rate hike and increase in foreign debt followed by real exchange rate depreciation decrease net worth significantly. The increase in credit spread follows as a consequence to compensate for a higher-risk financial market. Hence, the investment decreases dramatically after the shock following the shrinkage in demand in production sectors. The relationship between worsening bank balance sheet and falls in investment and capital price is similar to [Kiyotaki and Moore \(1997\)](#) and [Gertler and Karadi \(2015\)](#). Including the foreign borrowing with foreign currency denominated magnifies the effects following [Aoki, Benigno and Kiyotaki \(2016\)](#). As these contractionary effects through the bank's balance sheet dominate an expansionary effect of export stimulus in our small open economy. CBDC and cash drop followed by a decrease in demand for consumption goods.

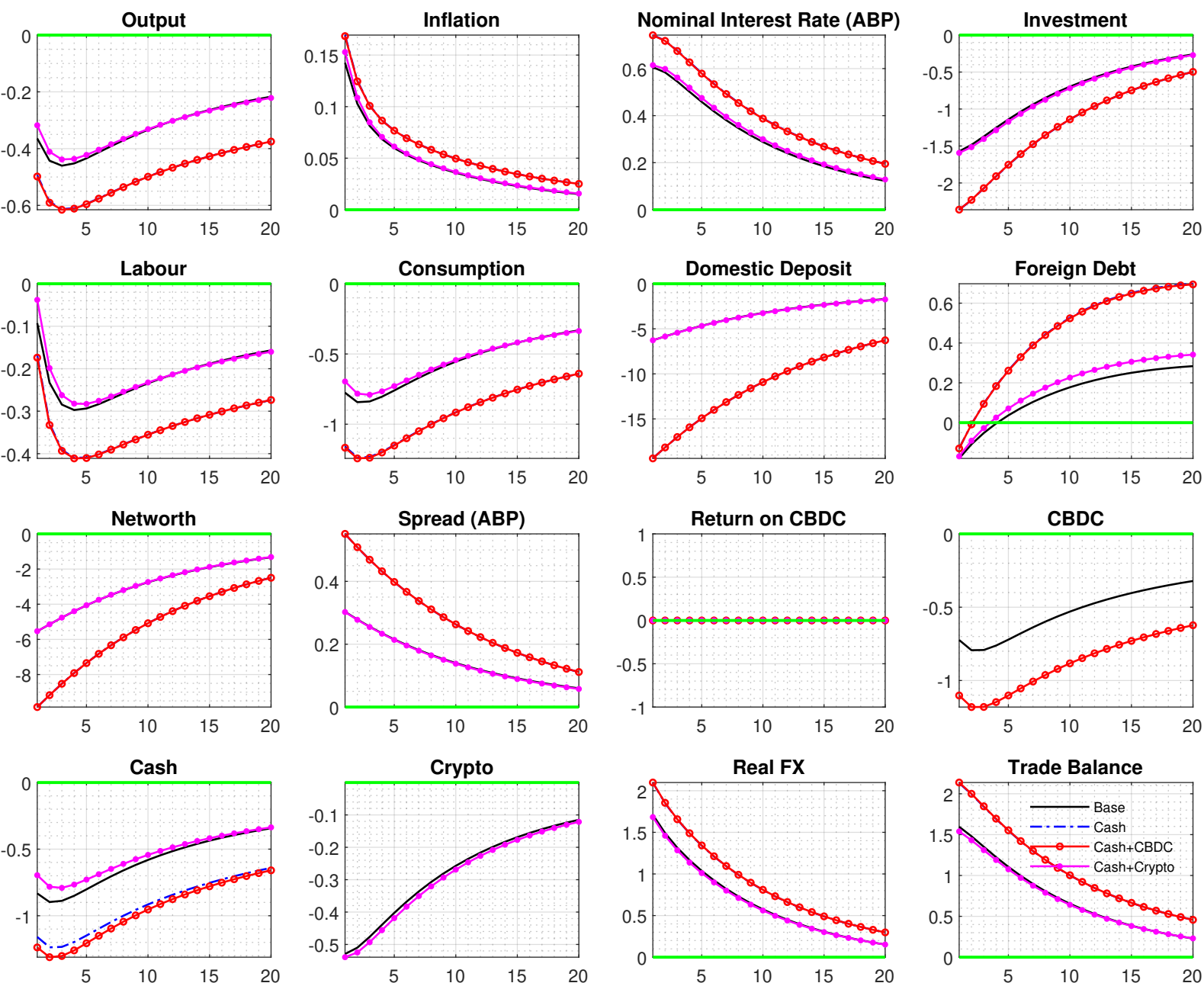


Figure 4: Response of selected variables to a 25 basis point contractionary foreign monetary policy shock in the domestic economy

An emerging market economy is extremely vulnerable to the foreign borrowing interest rate hike because it leads to a "debt deflation". This kind of inflation raises the value of foreign currency-denominated debt through exchange rate depreciation and a "credit cycle" of falling productive asset values: both depress the aggregate investment and production through the worsening of the balance sheet of intermediaries.

The foreign interest rate shock reveals some interesting points on incorporating cryptocurrencies and CBDC inside an emerging market macroeconomic model. First, the

presence of cryptocurrency in the banking sector reduces the effect of foreign rate shock significantly. This is mainly due to the substitution effects on funding sources for the banking sectors. As the domestic interest rate adjusts with inflation and exchange rate, the funding cost from domestic agents increases. Without the other option of cryptocurrency funding, bankers suffer more from increasing funding costs domestic and abroad. As can be seen from Figure 4, the model with cryptocurrency help to mitigate the transmission of the shock with a smaller change in net worth, spread and foreign debt. By reducing the need for foreign debt, cryptocurrencies also help to dampen the depreciation of the exchange rate. Thus, the nominal rate reacts less strongly. As a result, output, consumption and investment drop more intensively for the model without cryptocurrency. However, we only consider the case that cryptocurrency holders are not foreigners. This is important to mention due to two reasons. First, the funding cost with cryptocurrency is not subject to exchange rate fluctuation compared to foreigners' deposits. Second, for foreign interest rate shocks, the foreigner holders of cryptocurrencies take into account the increase of lending by cryptocurrencies instead of other forms of investment due to a higher foreign interest rate. Thus, they may ask for a higher return rate for cryptocurrency deposits in other countries. Lastly, as the reaction in consumption is different among model versions, the changes in CBDC and cash are also different. However, we note that the differences are not highly significant.

With baseline simulation, we note that allowing for cryptocurrency deposits in the banking sector affects the responses of core macroeconomic variables to shocks. We observe many deviations among model versions with foreign interest rate shock which is crucial for emerging markets. This is different from the finding of [Murakami and Viswanath-Natraj \(2021\)](#) with separated holders of cryptocurrencies. Also, the model assumes high elasticity for cryptocurrency for households due to low liquidity ability. This is crucial to depict the fact that cryptocurrency is not preferred to be a payment instrument but rather for investment purposes. Also, we observe that implementing CBDC does not come with significant changes in core macroeconomic variables in response to shock. This is in line with the results of [Minesso, Mehl and Stracca \(2022\)](#) who find that the effect

on the domestic economy is rather negligible but implementing CBDC has a significant effect on the international market. However, we use the base model in which CBDC have a fixed return. Hence, the difference between cash and CBDC in the base model is minimal. In the next section, we will see the implications of alternative designs on CBDC.

3.2 Results of alternative CBDC designs

In this section, I present the results of alternative CBDC designs. We investigate the implications of CBDC through three kinds of shocks and four different designs of CBDC. The Base model means a fixed return on CBDC holding. The Flex model means that the return of CBDC follows a Taylor rule which makes it compatible with deposits. The Markdown model means that the return of CBDC reacts with a constant spread to the nominal rate. Lastly, the Quantity model means that the amount of CBDC is a fixed proportion of GDP and the return is determined by the market.

Again, we look at the impulse response functions of three main shocks. As pointed out from the beginning, CBDC is a hybrid instrument which can be used for payment and saving at the same time. Allowing for different designs on CBDC, the model predicts significant differences in responses of the economy. Using a Taylor-type rule for return rate on CBDC, we see that the Flex differs the most from the other models. For all three shocks, the Flex model shows that the output reacts stronger to shocks compared to the Base model. Besides, the flexible rate on CBDC seems to interact with the responses of the monetary rate. This reaction of output is mainly followed by consumption but not investment because the model implies that only cash and CBDC can be used for payment of consumption. Hence, altering the CBDC design has a direct effect on consumption.

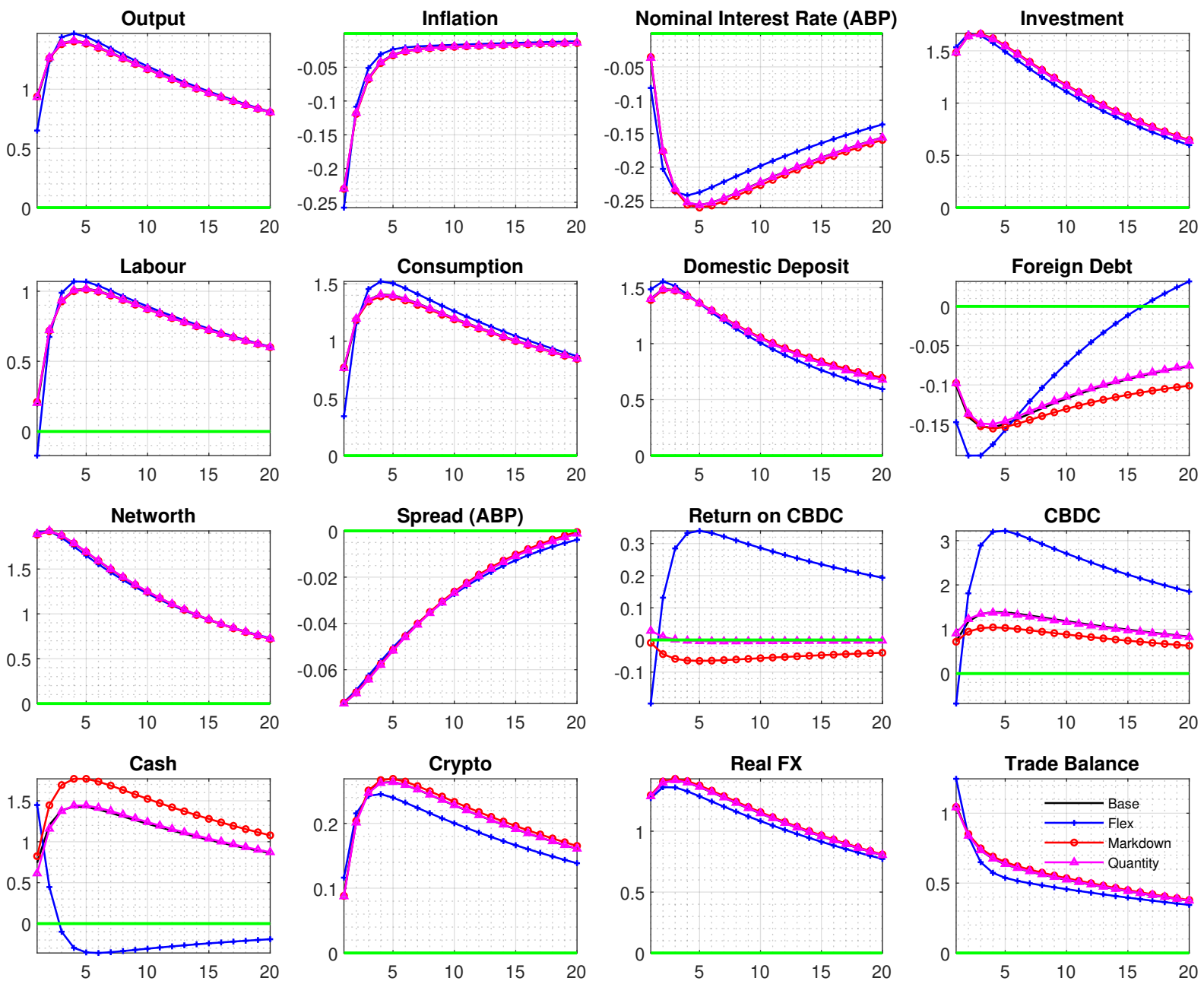


Figure 5: Response of selected variables to a one standard deviation expansionary total factor productivity shock in the domestic economy

Looking broadly, allowing for flexible return on CBDC also affects other macroeconomic factors. Inflation and investment also react differently compared to the Base model. As inflation seems to react stronger with the flexible rate, investment decrease less in the Flex model with a contractionary domestic monetary shock. This is due to the substitution effect between consumption and investment. Moreover, the nominal interest rate reacts slighter when we allow for the CBDC rate to react to the inflation rate and output. Hence, under the model scope, CBDC flexible rate can also share the work of the

nominal rate in fighting inflation. Hence, it reduces the reaction of the nominal interest rate to shocks. This is important for emerging markets as it reduces the pressure on the exchange rate with the changes in nominal rate which plays a crucial role in conducting emerging markets policies.

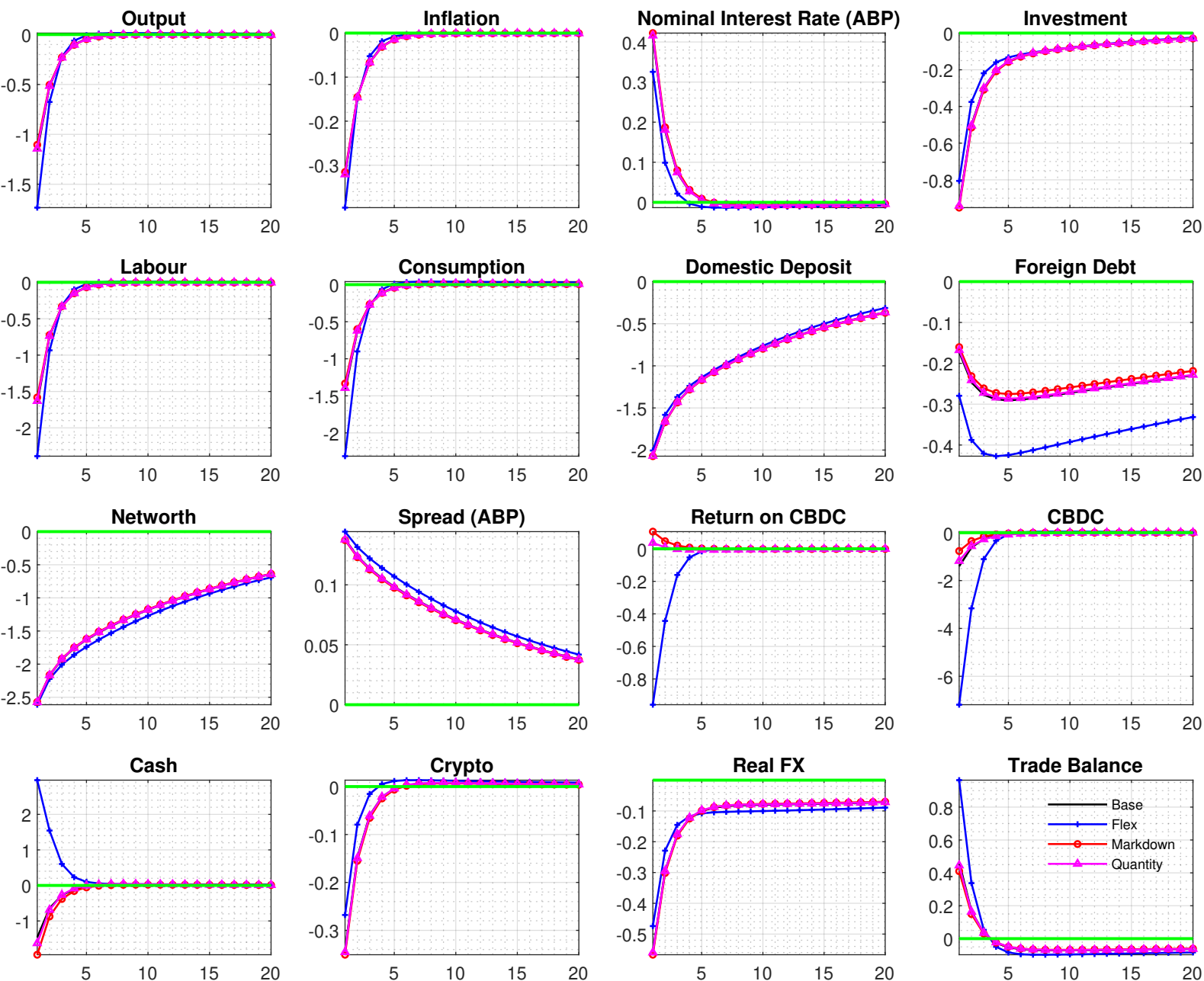


Figure 6: Response of selected variables to a 25 basic point tightening monetary policy shock in the domestic economy

Lastly, because CBDC can affect the nominal interest rate, it affects the foreign debt indirectly. This observation comes from the optimization problem in the banking sector where there is a substitution effect between domestic and abroad funding sources. First,

it is worth mentioning that the foreign borrowing burden is affected by the foreign interest rate and the fluctuation of the exchange rate. In our case, the exchange rate reacts less forcefully following the dynamic of the nominal interest rate. Hence, it reduces the value of foreign debt. Second, the domestic nominal rate decreases more with a TFP shock and increases less with an interest rate shock means a smaller increase in the cost of domestic borrowing. Hence, it helps to decrease the foreign debt in both cases.

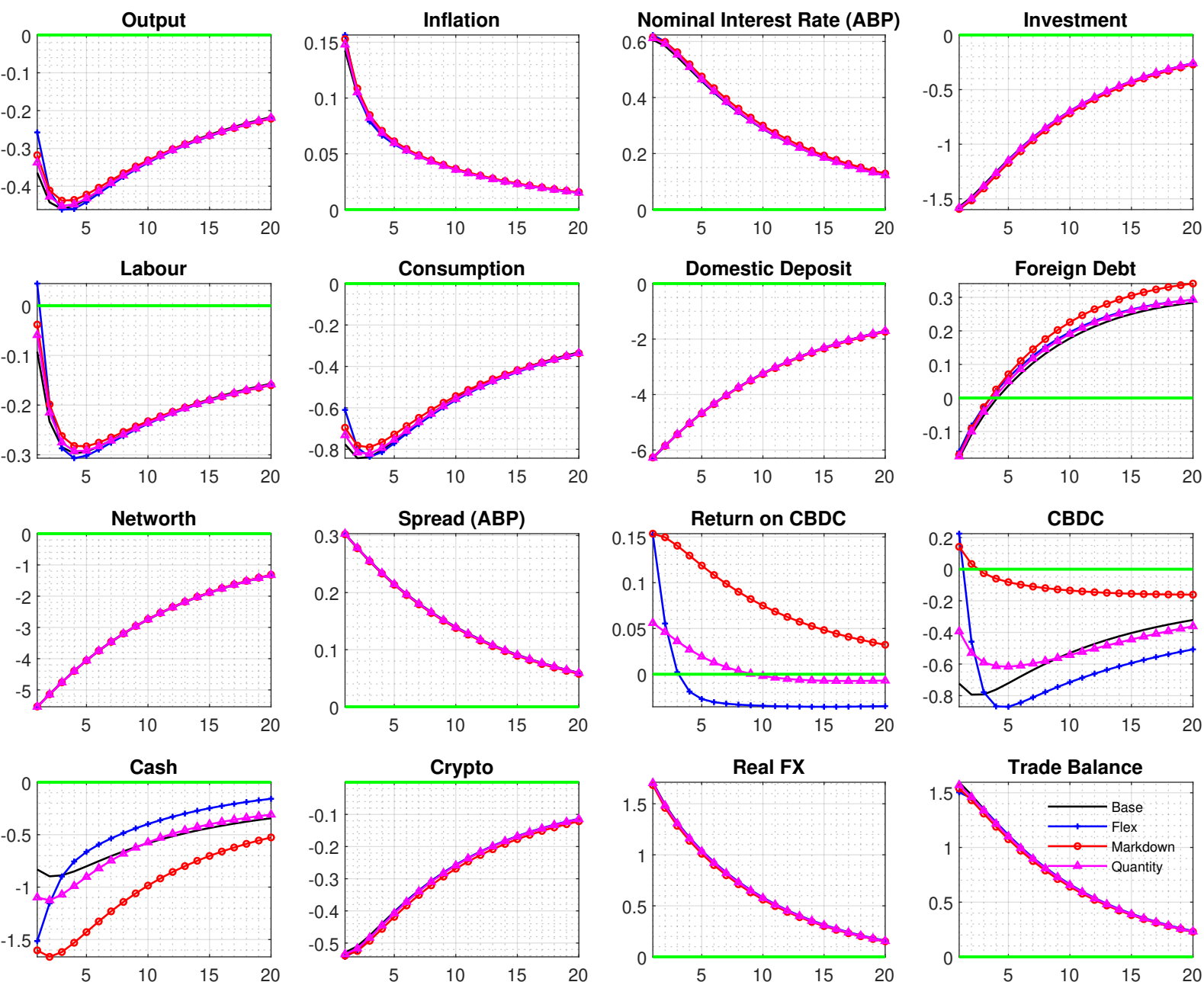


Figure 7: Response of selected variables to a one standard deviation expansionary foreign monetary policy shock in the domestic economy

3.3 Optimal monetary policy rule

In this part, I conduct the optimal welfare policy exercise for the model without CBDC and four alternative designs of CBDC. We want to see the role of CBDC and their designs on optimal policy. To address this question, we now turn to the analysis of the systematic component of monetary policy. Following other literature on optimal policy, I compute the reaction to inflation and depreciation rate parameters of the monetary policy rule that maximizes household welfare. Welfare is defined as a recursive form as $W_t = U_t + E_t \beta W_{t+1}$ in which it is a sum of current and expected future utility. Our model is solved at second order approximation with the pruning method and the welfare gain is reported under consumption equivalent. The results are shown in Table B.2.

Different from other optimal welfare exercises on the policy rule, we do not impose an upper bound on the response to inflation. This is a common approach due to price stability can have a big effect on welfare. Except for the Flex version, all others show that they will put all the weight on fighting inflation but not stabilizing the depreciation rate. This finding is in line with ? who also conduct a welfare analysis using the exchange rate targeting with ABK model. They find that there are significant welfare losses with exchange rate targeting in addition to inflation targeting. The main finding which emerges is that the Flex version returns a positive value in response to the depreciation rate. This suggests that implementing the flexible rule on CBDC can provide valuable help to conventional policy on fighting inflation. Thus, it provides space for targeting depreciation rate which is important for emerging markets.

3.4 Further Results

Different Storage Cost of Cash: In this part, I present the results with higher storage of physical cash. This reduces the incentive for households to hold physical cash relative to CBDC. To this extent, even with fixed returns on CBDC, holding physical cash is less preferred compared to holding CBDC. In B.1, the smaller value of ϵ^m means a higher cost of storage of cash compared to CBDC. $\epsilon^m = 0.8$ means a 20% storage cost while $\epsilon^m = 0$ means a zero storage cost. In Figure B.1, I report the response of

output and CBDC holdings for a positive total factor productivity shock in the domestic economy. The intuition for the results is simple. Higher storage costs make CBDC more attractive relative to cash even without the saving feature for CBDC. It provokes the usage of CBDC compared to cash. Under the flexible rate regime of CBDC, storage cost has a significant effect on the arbitrage condition that links together deposit return, the exchange rate and the interest rate on CBDC. Hence, the effect spreads to consumption and the banking sector which also affects foreign debts.

Different Liquidity Level: In this part, we vary the substitutability between CBDC and cash for the liquidity aggregator in the utility function. Undoubtedly, higher substitutability affects the decisions of households on cash and CBDC in response to shocks. Unlike results for differing storage costs, the difference among different values is not large even though we observe some differences in the dynamic of foreign debt under the flexible return regime of CBDC. Hence, the changes in substitutability between CBDC and cash seem to not change significantly in the general equilibrium of our model.

Variance Decomposition: Lastly, I provide the variance decomposition of three main shocks for 4 different versions of our model. Including cryptocurrency and CBDC into the model increases the effect of TFP shock and decreases the foreign interest rate shock on consumption. Moreover, we observe less volatility in foreign debt in response to a foreign interest rate shock in the model with CBDC and crypto. However, domestic policy rate shock accounts for a bigger role under this circumstance. Hence, including CBDC seems to increase the transmission of domestic monetary policy. subsectionOptimal monetary policy

4 Conclusion

This paper studies the implications of CBDC inside an emerging market economy with cryptocurrency. We build an open economy model with CBDC, cryptocurrency inside the banking sector with foreign debt. The results of this paper shed some light on a growing body of literature on digital assets, CBDC, and the digital economy. Some

of these results are in line with the existing literature. In particular, I also find that the introduction does not affect the domestic macroeconomic variables significantly when the return on CBDC is fixed as 1. With the fixed return of CBDC as 1, we assume that CBDC is only used for payment but not for saving. However, different from the results of [Murakami and Viswanath-Natraj \(2021\)](#), I find that allowing bankers to hold cryptocurrencies as a source of funding can mitigate the negative effect of some shocks. The reason is due to the fact that the return of cryptocurrency is partly shielded from changes in the domestic and abroad policy rate. Hence, this allows the banking sectors to have more options in funding sources. The main reason can be traced back to the fact that I implement a different form of the utility function and assume the household can hold cash, CBDC and cryptocurrency at the same time compared to [Murakami and Viswanath-Natraj \(2021\)](#). This gives rise to a substitution effect for households in responding to shocks. Surprisingly, with CBDC and cryptocurrencies, we observe significant changes in the dynamic of foreign debt. Cryptocurrency and CBDC seem to help reduce the dependence on foreign debt which is important for an emerging market economy. However, the model is not able to depict the high volatility of cryptocurrency. Thus, our results should be considered with caution. Moving forward, alternative designs of CBDC reveal many more interesting observations. I find that CBDC can provide an additional tool for central banks and support the nominal rate in achieving the central bank's targets. Last but not least, a flexible rate in CBDC return can also affect the responses in the banking sector. To the best of my knowledge, there is yet a model to include CBDC and cryptocurrency for an emerging market model with financial frictions.

Nevertheless, this model has not included some relevant features of CBDC in an emerging market which should be tackled in future. First, for instance, we do not include the possibility of firms either using foreign capital (i.e foreign direct investment firms) or borrowing directly from abroad (i.e foreign currency or foreign CBDC). Second, we can allow the banking sectors to hold CBDC as a reserve requirement. Third, I have not implemented any macroprudential policy on either domestic or abroad borrowing. Hence, the question about the interaction of CBDC and macroprudential tax has re-

mained doubtful. Last but not least, the possibility for households to hold foreign CBDC such as the Digital Dollar is crucial to study for emerging markets policymakers. Allowing domestic households to trade foreign CBDC will affect the USD reserve of the central bank. Hence, it limits the power of emerging market central banks to conduct foreign exchange intervention policy to stabilise the domestic economy from foreign shocks such as exchange rates or foreign interest rate shocks. Although our model has already shed some light on the effect of foreign interest rate shock, including all the above features might change the results significantly. Finally, results are generated with our model structure and assumptions as well as our parameterisation. Hence, using the model for policy need to be conducted with caution and estimation of the model is highly desired with a specific dataset. These issues are left for future research.

References

- Agur, Itai, Anil Ari, and Giovanni Dell’Ariccia.** 2022. “Designing central bank digital currencies.” *Journal of Monetary Economics*, 125: 62–79.
- Andolfatto, David.** 2021. “Assessing the impact of central bank digital currency on private banks.” *The Economic Journal*, 131(634): 525–540.
- Aoki, Kosuke, Gianluca Benigno, and Nobuhiro Kiyotaki.** 2016. “Monetary and financial policies in emerging markets.” *Unpublished paper, London School of Economics*. [652].
- Asimakopoulos, Stylianos, Marco Lorusso, and Francesco Ravazzolo.** 2019. “A new economic framework: a DSGE model with cryptocurrency.”
- Athey, Susan, Ivo Parashkevov, Vishnu Sarukkai, and Jing Xia.** 2016. “Bitcoin pricing, adoption, and usage: Theory and evidence.”
- Auer, Raphael, and Rainer Böhme.** 2020. “The technology of retail central bank digital currency.” *BIS Quarterly Review, March*.
- Auer, Raphael, Codruta Boar, Giulio Cornelli, Jon Frost, Henry Holden, and Andreas Wehrli.** 2021*a*. “CBDCs beyond borders: results from a survey of central banks.” Bank for International Settlements.
- Auer, Raphael, Jon Frost, Leonardo Gambacorta, Cyril Monnet, Tara Rice, and Hyun Song Shin.** 2021*b*. “Central bank digital currencies: motives, economic implications and the research frontier.” *Annual Review of Economics, forthcoming*.
- Barrdear, John, and Michael Kumhof.** 2016. “The macroeconomics of central bank issued digital currencies.”
- Baughman, Garth, and Jean Flemming.** 2022. “Global demand for basket-backed stablecoins.” *Review of Economic Dynamics*.
- Benigno, Pierpaolo.** 2019. “Monetary policy in a world of cryptocurrencies.”

- Boar, Codruta, Andreas Wehrli, et al.** 2021. “Ready, steady, go?-Results of the third BIS survey on central bank digital currency.” *BIS papers*.
- Böhme, Rainer, Nicolas Christin, Benjamin Edelman, and Tyler Moore.** 2015. “Bitcoin: Economics, technology, and governance.” *Journal of economic Perspectives*, 29(2): 213–38.
- Brunnermeier, Markus K, and Dirk Niepelt.** 2019. “On the equivalence of private and public money.” *Journal of Monetary Economics*, 106: 27–41.
- Chen, Sally, Tirupam Goel, Han Qiu, and Ilhyock Shim.** 2022. “CBDCs in emerging market economies.” *BIS Papers*.
- Chiu, Jonathan, Seyed Mohammadreza Davoodalhosseini, Janet Hua Jiang, and Yu Zhu.** 2019. “Bank market power and central bank digital currency: Theory and quantitative assessment.” *Available at SSRN 3331135*.
- Cukierman, Alex.** 2019. “Welfare and political economy aspects of a central bank digital currency.”
- Engert, Walter, and Ben Siu-Cheong Fung.** 2017. “Central bank digital currency: Motivations and implications.” Bank of Canada Staff Discussion Paper.
- Fernández-Villaverde, Jesús, and Daniel Sanches.** 2019. “Can currency competition work?” *Journal of Monetary Economics*, 106: 1–15.
- Fernández-Villaverde, Jesús, Daniel Sanches, Linda Schilling, and Harald Uhlig.** 2021. “Central bank digital currency: Central banking for all?” *Review of Economic Dynamics*, 41: 225–242.
- Foster, Katherine, Sofie Blakstad, Sangita Gazi, and Martijn Bos.** 2021. “Digital currencies and CBDC impacts on least developed countries (LDCs).” *The Dialogue on Global Digital Finance Governance Paper Series*.
- Garratt, Rodney, and Neil Wallace.** 2018. “Bitcoin 1, bitcoin 2,...: An experiment in privately issued outside monies.” *Economic Inquiry*, 56(3): 1887–1897.

- Gertler, Mark, and Nobuhiro Kiyotaki.** 2010. “Financial intermediation and credit policy in business cycle analysis.” In *Handbook of monetary economics*. Vol. 3, 547–599. Elsevier.
- Gertler, Mark, and Peter Karadi.** 2011. “A model of unconventional monetary policy.” *Journal of Monetary Economics*, 58(1): 17–34.
- Gertler, Mark, and Peter Karadi.** 2015. “Monetary policy surprises, credit costs, and economic activity.” *American Economic Journal: Macroeconomics*, 7(1): 44–76.
- Ikeda, Daisuke, et al.** 2020. “Digital money as a unit of account and monetary policy in open economies.” Institute for Monetary and Economic Studies, Bank of Japan.
- IMF.** 2020a. “Digital Money Across Borders: Macro-Financial Implications.” *IMF Policy Paper*. October 19, 2020.
- IMF.** 2020b. “Regulation of Crypto Assets.”
- IMF.** 2020c. “Toward an Integrated Policy Framework.” *IMF Policy Paper No. 2020/46*.
- Keister, Todd, and Cyril Monnet.** 2020. “Discussion of “Central Bank Digital Currency: Stability and Information”.”
- Kiyotaki, Nobuhiro, and John Moore.** 1997. “Credit cycles.” *Journal of political economy*, 105(2): 211–248.
- Kumhof, Michael, and Clare Noone.** 2018. “Central bank digital currencies-design principles and balance sheet implications.”
- Kumhof, Michael, Marco Pinchetti, Phurichai Rungcharoenkitkul, and Andrej Sokol.** 2021. “Central Bank Digital Currencies, Exchange Rates and Gross Capital Flows.” *ECB International aspects of digital currencies and fintech*.
- Minesso, Massimo Ferrari, Arnaud Mehl, and Livio Stracca.** 2022. “Central bank digital currency in an open economy.” *Journal of Monetary Economics*, 127: 54–68.

- Miranda-Agrippino, Silvia, and H elene Rey.** 2020. "US monetary policy and the global financial cycle." *The Review of Economic Studies*, 87(6): 2754–2776.
- Miranda-Agrippino, Silvia, Tsvetelina Nenova, and H el ene Rey.** 2020. *Global footprints of monetary policies*.
- Murakami, David, and Ganesh Viswanath-Natraj.** 2021. "Cryptocurrencies in Emerging Markets: A Stablecoin Solution?" *Available at SSRN 3949012*.
- Rotemberg, Julio J.** 1982. "Sticky prices in the United States." *Journal of political economy*, 90(6): 1187–1211.
- Schilling, Linda, Jes us Fern andez-Villaverde, and Harald Uhlig.** 2020. "Central bank digital currency: When price and bank stability collide." National Bureau of Economic Research.
- Schilling, Linda M, and Harald Uhlig.** 2019. "Currency substitution under transaction costs." Vol. 109, 83–87.
- Sockin, M, and W Xiong.** 2018. "A model of cryptocurrencies. Princeton University." *Unpublished manuscript.[Google Scholar]*.
- Woodford, Michael.** 2003. "Interest and prices."

A Appendix 1: Details on derivations³

A.1 Households

$$U_t = E_t \sum_{t=0}^{\infty} \beta^t \left[\ln \left(C_t - \zeta_0 \frac{H_t^{1+\zeta}}{1+\zeta} \right) - \chi_{DC} \varrho \left(\frac{M_t}{M_t + DC_t}, \Gamma \right) + \mu^C \left(\frac{Cryp_t}{1 - \sigma^c} \right)^{1-\sigma^c} \right] \quad (\text{A.1})$$

s.t.

$$\begin{aligned} & C_t + D_t + B_t + Q_t K_t^h + M_t + DC_t + Cryp_t + \chi^h(K_t^h, K_t) \\ &= w_t H_t + \frac{R_{t-1}}{\pi_t} B_{t-1} + \frac{R_{t-1}^D}{\pi_t} D_{t-1} + (Z_t + \lambda Q_t) K_{t-1}^h + \epsilon^m M_{t-1} + \frac{R_{t-1}^{DC}}{\pi_t} DC_{t-1} + \frac{R_{t-1}^C}{\pi_t} Cryp_{t-1} + \Pi_t \end{aligned}$$

We assume that consumption goods are only paid by cash and CBDC. Thus, the cash in advance is following:

$$C_t = [\mu^m M_t^{1-\rho_{dc}} + \mu^{DC} DC_t^{1-\rho_{dc}}]^{\frac{1}{1-\rho_{dc}}} \quad (\text{A.2})$$

The re-balancing utility loss function takes the following functional form:

$$\varrho \left(\frac{M_t}{M_t + DC_t}, \Gamma \right) = \left(\Gamma - \frac{M_t}{M_t + DC_t} \right)^2 \quad (\text{A.3})$$

A.2 Bankers

Similar to [Aoki, Benigno and Kiyotaki \(2016\)](#) and [Gertler and Karadi \(2011\)](#), we write the banker's problem in a recursive form:

$$V_t(N_t) = \max_{K_t^b, D_t, D_t^*} E_t \Lambda_{t;t+1} [(1 - \sigma) N_{t+1} + \sigma V_{t+1}(N_{t+1})] \quad (\text{A.4})$$

³For more detailed derivations, viewer can read [Aoki, Benigno and Kiyotaki \(2016\)](#)

Rewritten in term of Tobin's Q as:

$$\psi_t = \frac{V_t}{N_t} = E_t \Lambda_{t,t+1} [(1 - \sigma) + \sigma \varkappa_{t+1} \left(\frac{N_{t+1}}{N_t} \right)] \quad (\text{A.5})$$

Including the flow of fund, we rewrite:

$$\frac{N_{t+1}}{N_t} = \frac{Z_{t+1} + Q \lambda_{t+1} lev_t}{Q_t} - \frac{R_t}{\Pi_{t+1}} - \frac{s_t D_t^* R_t^*}{\Pi_{t+1}^*} - \frac{Cryp_t R_t^c}{\Pi_{t+1}} \quad (\text{A.6})$$

As we assume amount of cryptocurrency and foreigner deposit relate to leverage as $\frac{s_t D_t^*}{n_t} = x_t lev_t$ and $\frac{Cryp_t}{n_t} = x_t^c lev_t$, we have definition for $\frac{D_t}{n_t}$ as:

$$\frac{D_t}{n_t} = \left(1 + \frac{\varkappa_b}{2} x_t^2 \right) lev_t - x_t lev_t - x_t^c lev_t \quad (\text{A.7})$$

Then we express Tobin's Q as:

$$\psi_t = \mu_{tt} + \left(1 + \frac{\varkappa_b}{2} x_t^2 lev_t \right) lev_t + \mu^* x_t lev_t + \mu^c x_t^c lev_t \quad (\text{A.8})$$

Now, we can rewrite the the banker optimization problem into the Lagrangian similar to [Aoki, Benigno and Kiyotaki \(2016\)](#) using all the definition from (21)-(25):

$$\mathcal{L}_\square = (1 + \lambda_t) \left[\mu_t lev_t + \mu_t^c x_t^c lev_t + \mu_t^* x_t lev_t + \left(1 + \frac{\varkappa_b}{2} x_t^2 \right) v_t \right] - \lambda_t \theta lev_t \quad (\text{A.9})$$

Using FOCs, we express a closed form of the fraction of assets funded by foreign borrowing.

$$x_t = \frac{\theta \mu_t^* - \varkappa_b v_t}{\theta \varkappa_b v_t} + \sqrt{\left(\frac{\mu_t^*}{\varkappa_b v_t} \right)^2 + 2 \left(\frac{\mu_t^c}{\varkappa_b v_t} x_t^c + \left(\frac{1}{\theta} \right)^2 + 2 \frac{\mu_t}{\varkappa_b v_t} \right)} \quad (\text{A.10})$$

A.3 Cryptocurrency producer

In this part, for modelling cryptocurrency producers (miners), we follow the idea of [Asimakopoulos, Lorusso and Ravazzolo \(2019\)](#) for including cryptocurrencies from [Socin and Xiong \(2018\)](#) into a general equilibrium set-up. As standard, we assume that there is

a continuum of cryptocurrency producers indexed by n , where $n \in [0, 1]$, and all miners operate under perfect competition. Similar to [Sockin and Xiong \(2018\)](#), producing the number of tokens requires some cost to ensure unlimited supply. Cost for producing relates to the common component and programming skills. Producers conduct their profit maximization as follows:

$$\Pi_t^c = \max_{Cryp_t} ((1 - \rho^c)P_t^c - \kappa^{-\varpi_t}) Cryp_t \quad (\text{A.11})$$

where ϖ_t governs the efficiency of producers and $1 - \rho^c$ is a fraction of revenue from selling to households. The setup is mainly aimed to create a proxy for cryptocurrency producer productivity shock.

B Appendix 2: Figures

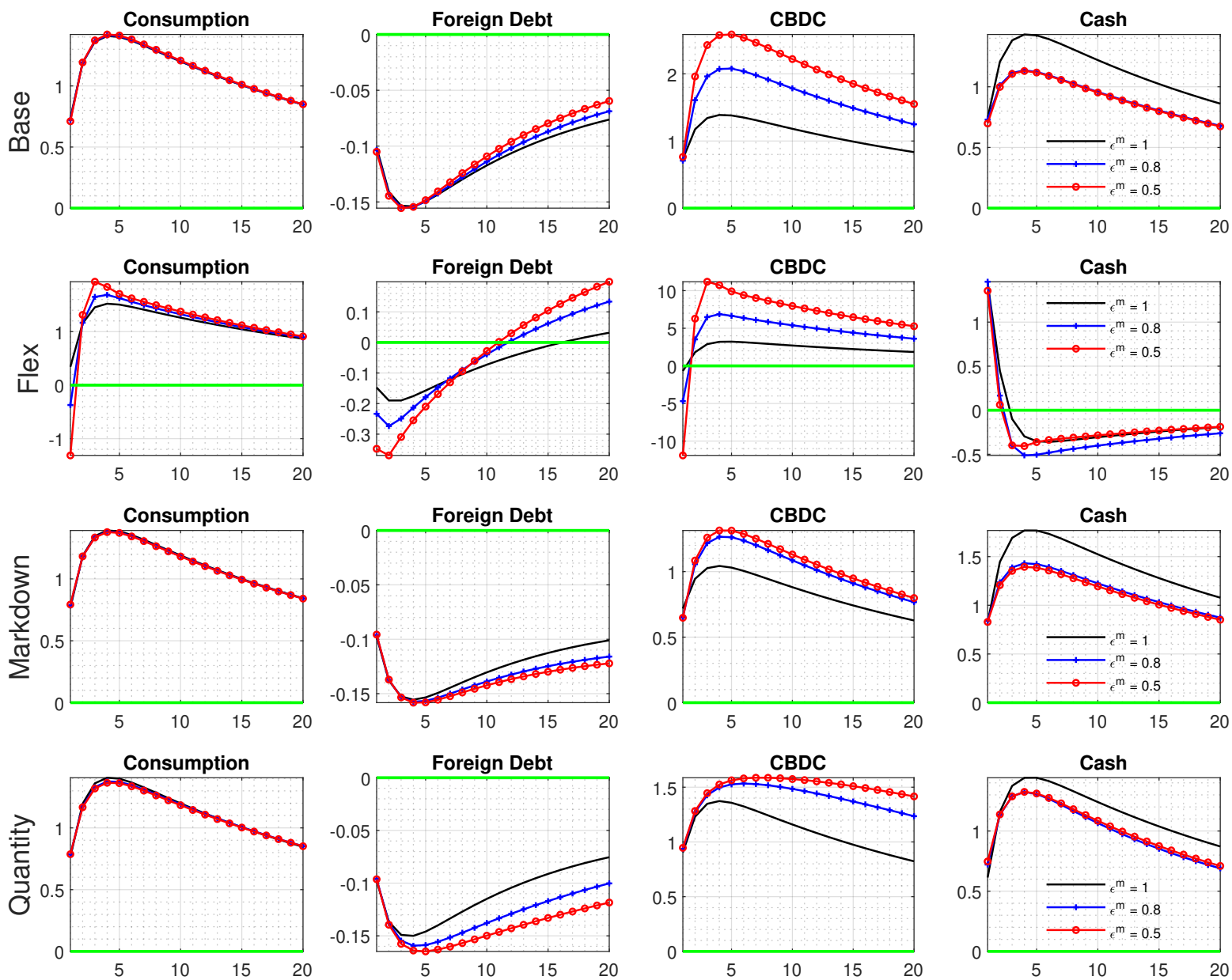


Figure B.1: Response of selected variables to a 1% expansionary total factor productivity shock in the domestic economy

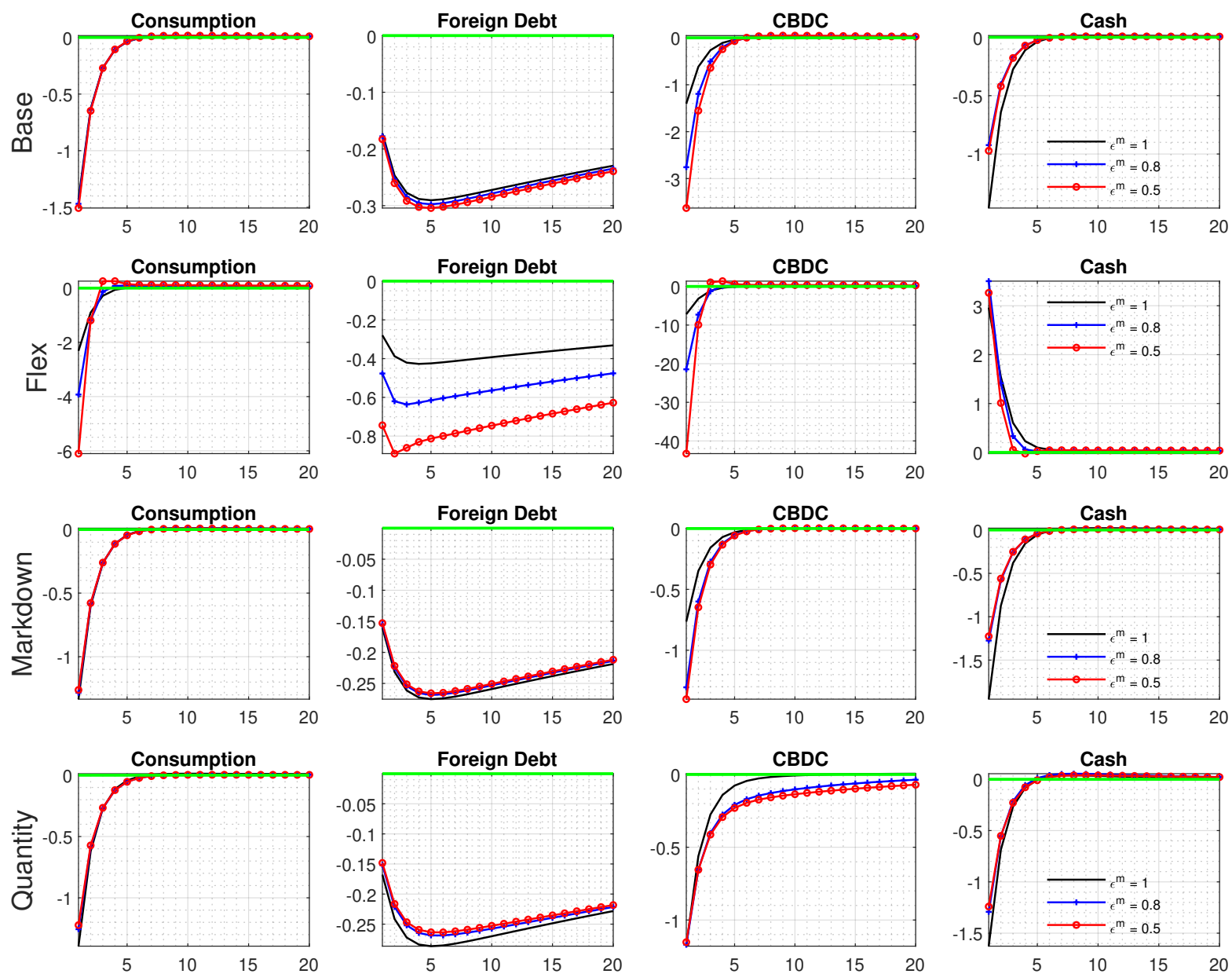


Figure B.2: Response of selected variables to a 25 basis point tightening monetary policy shock in the domestic economy

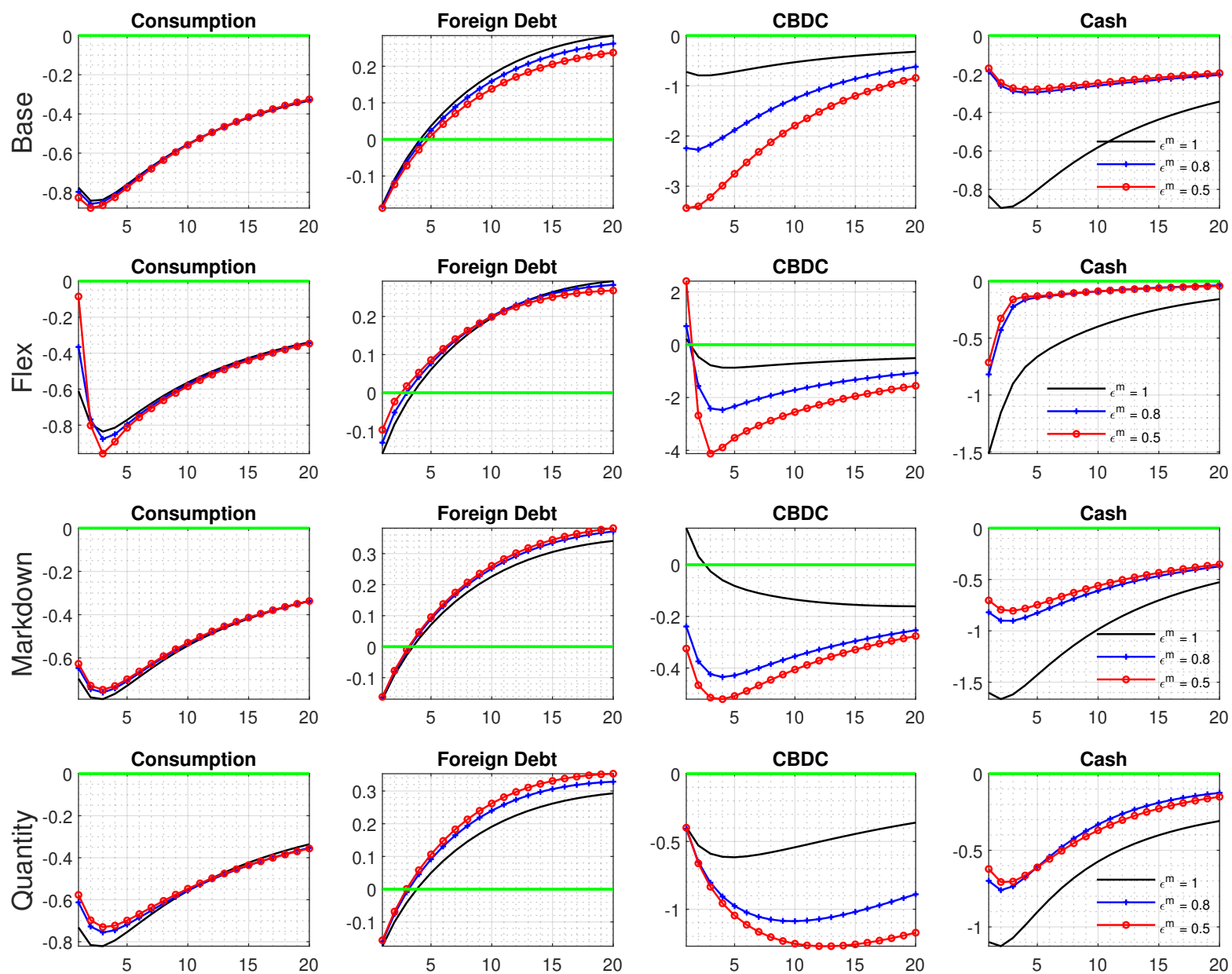


Figure B.3: Response of selected variables to a one standard deviation expansionary foreign monetary policy shock in the domestic economy

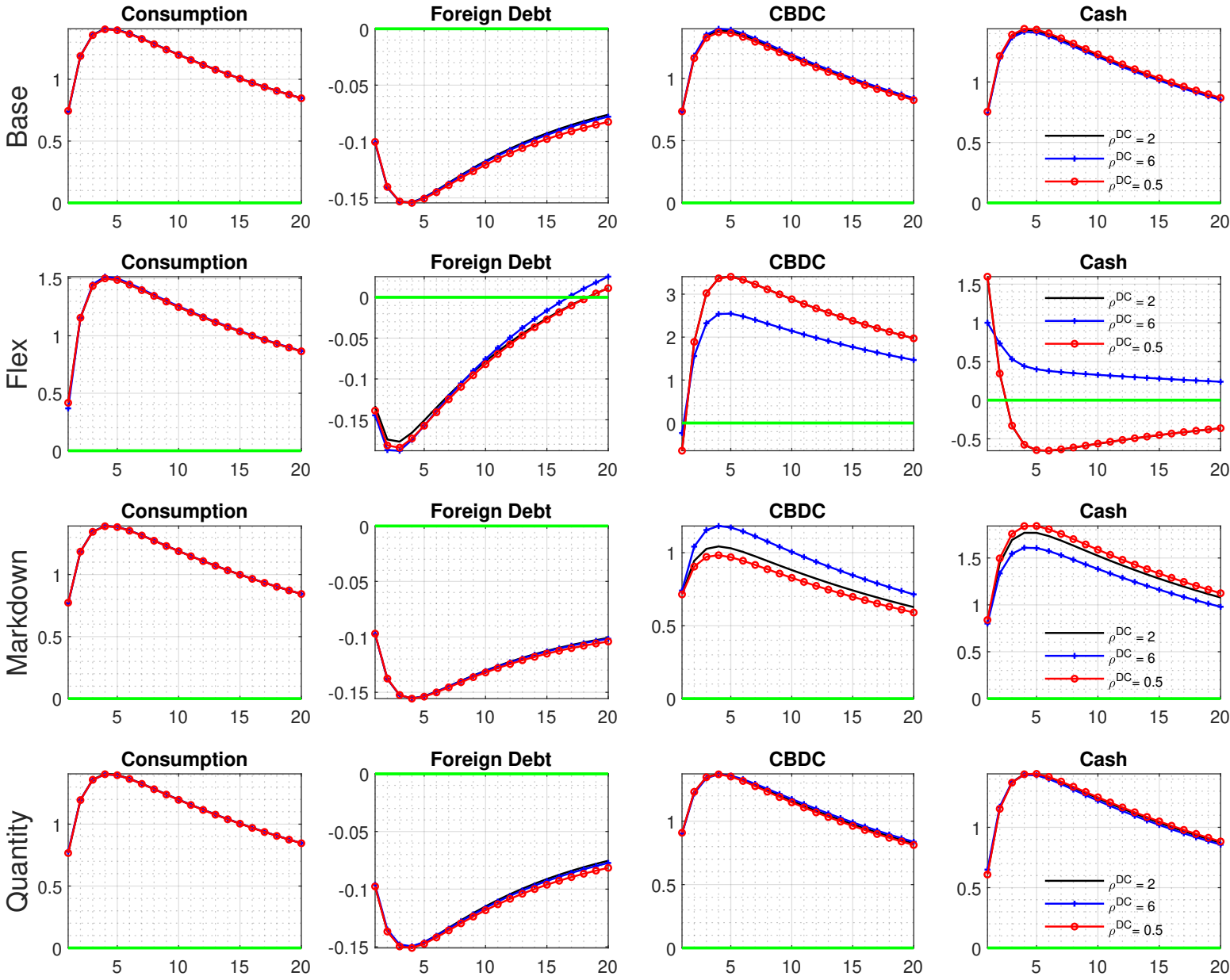


Figure B.4: Response of selected variables to a 1% expansionary total factor productivity shock in the domestic economy

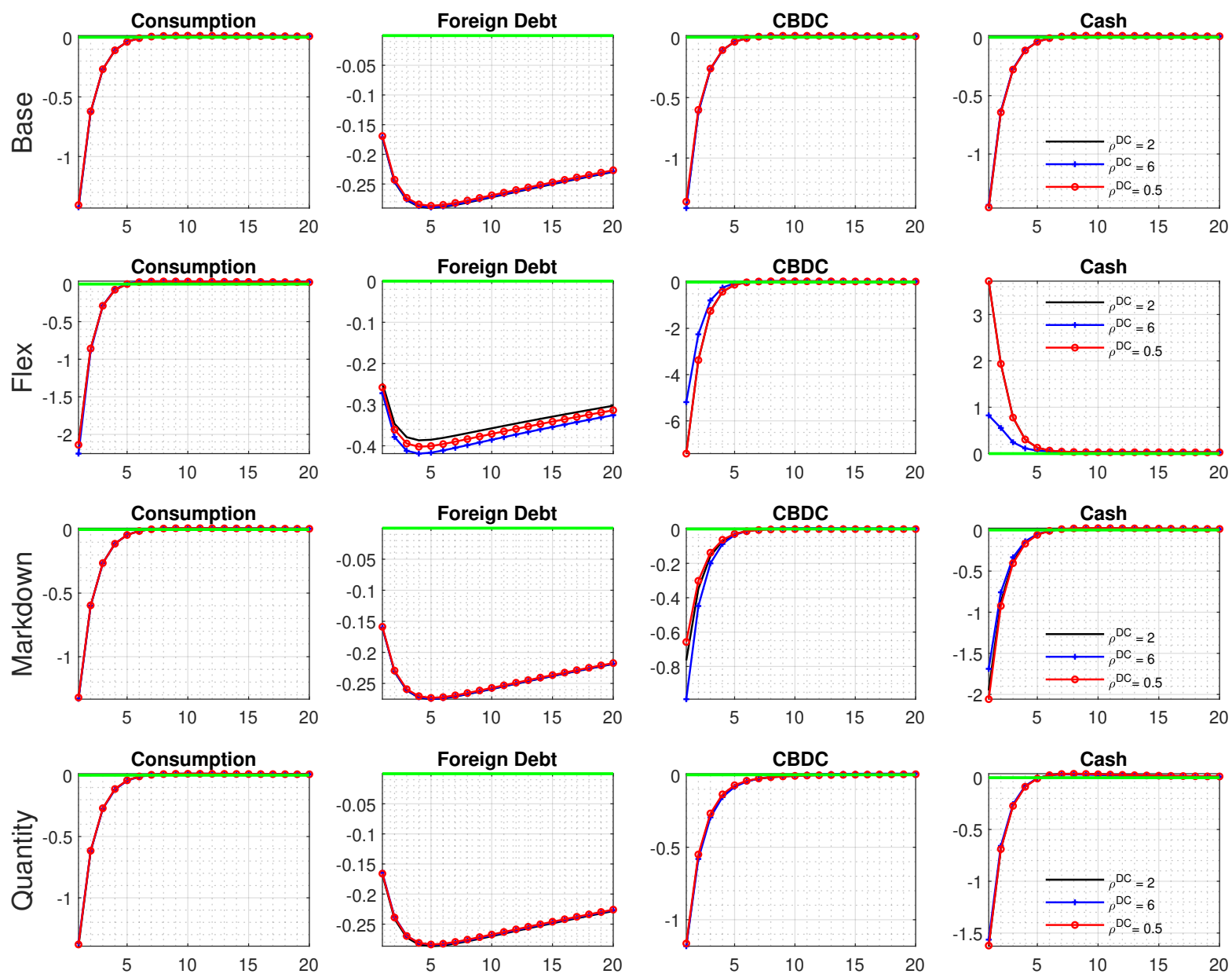


Figure B.5: Response of selected variables to a 25 basis point tightening monetary policy shock in the domestic economy

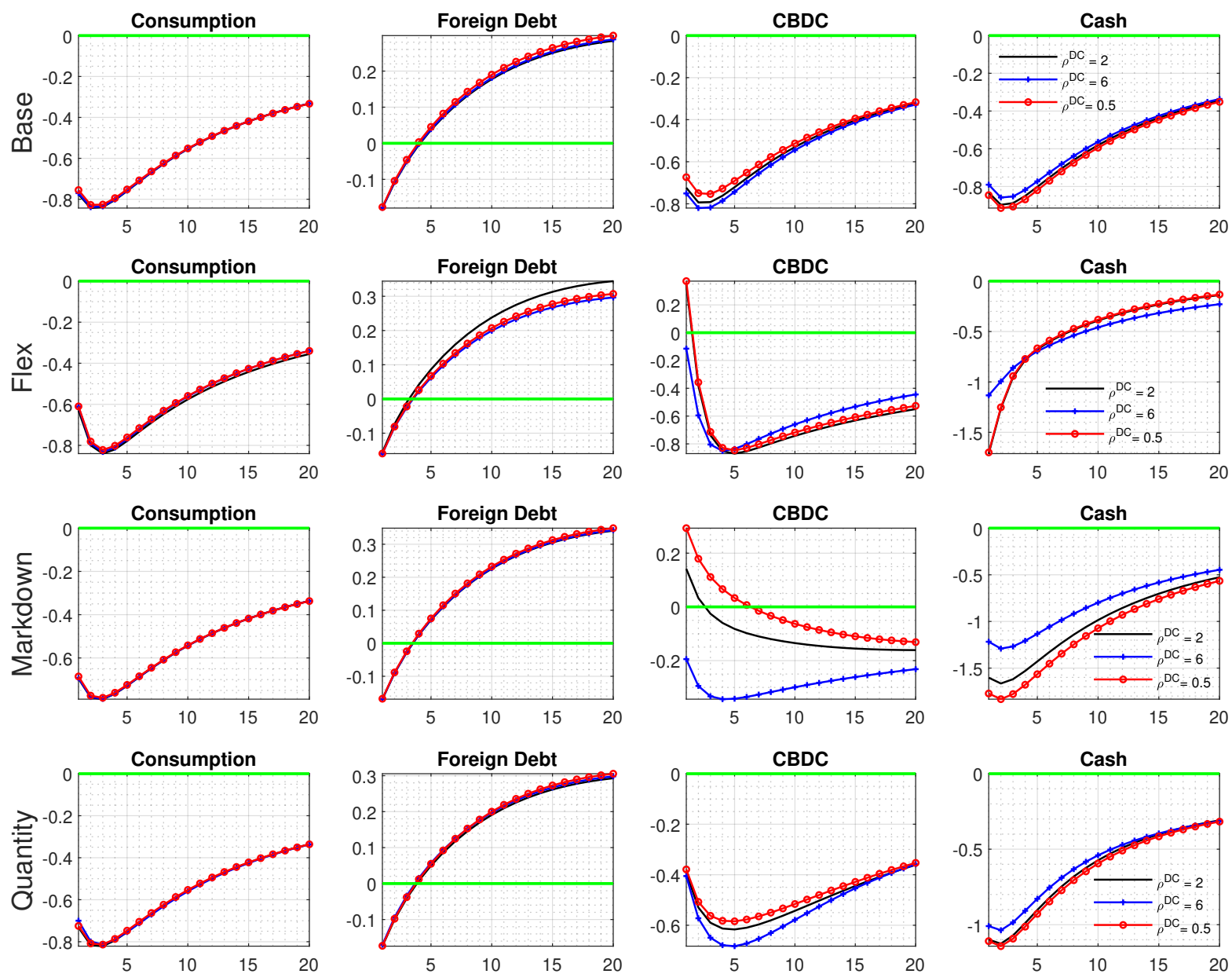


Figure B.6: Response of selected variables to a one standard deviation expansionary foreign monetary policy shock in the domestic economy

Table B.1: Variance Decomposition

Cash			
	R	A	R^*
Consumption	3.86	55.36	40.77
Inflation	40.17	26.35	33.49
Real FX	0.92	59.60	39.48
Foreign Debt	3.88	0.23	95.89
Cash+CBDC			
	R	A	R^*
Consumption	3.90	55.32	40.78
Inflation	40.35	26.36	33.29
Real FX	0.92	59.49	39.59
Foreign Debt	3.95	0.22	95.82
Cash+Crypto			
	R	A	R^*
Consumption	4.66	77.28	18.06
Inflation	45.30	29.88	24.82
Real FX	1.39	72.91	25.69
Foreign Debt	23.21	9.77	67.02
Cash+Crypto+CBDC (Base)			
	R	A	R^*
Consumption	5.21	76.41	18.38
Inflation	47.43	29.87	22.70
Real FX	1.38	71.81	26.80
Foreign Debt	32.92	7.02	60.05

Table B.2: Volatility and welfare under optimal monetary rule: foreign interest rate shocks.

Parameters	Cash+Cryp		Base		Flex		Quantity		Markdown	
	Baseline	Optimal	Baseline	Optimal	Baseline	Optimal	Baseline	Optimal	Baseline	Optimal
ϕ_π	1.49	7.5686	1.49	7.4864	1.49	5.9683	1.49	7.6489	1.49	8.0006
ϕ_ϵ	0.3	0	0.3	0	0.3	0.0886	0.3	0	0.3	0
Volatility										
Output	2.1157	2.2915	2.1186	2.2853	2.1099	2.2780	2.1139	2.2874	2.1157	2.2950
Consumption	3.5352	3.7010	3.5849	3.7204	3.5686	3.7531	3.5692	3.7136	3.5354	3.7052
Inflation	0.2800	0.0569	0.2675	0.0569	0.2737	0.0622	0.2721	0.0575	0.2800	0.0540
Net-worth	17.5905	19.4314	17.6745	19.3794	17.6270	19.4142	17.6475	19.4480	17.5903	19.4743
CBDC	N/A	N/A	3.4458	3.6350	3.0215	1.1414	3.2764	3.4603	1.5629	2.4154
Crypto	1.6137	1.0443	1.5552	1.0154	4.6945	6.3762	1.5702	1.0344	1.6135	1.0421
Cash	3.5352	3.7010	3.7364	3.8130	1.5618	1.0255	3.9870	4.0798	6.0611	5.1795
Foreign Debt	3.9377	3.5764	3.5423	3.3685	3.4456	2.9292	3.5887	3.3929	3.9370	3.5672
Welfare gain (consumption equivalence to steady state welfare)										
ΔW	1.3525%	1.4040%	1.3615%	1.4056%	1.3423%	1.3860%	1.3560%	1.4017%	1.3450%	1.4016%