



# Pozzolana



**ELEVATION 1**



**ELEVATION 2**



**ELEVATION 3**



**ELEVATION 4**



**ELEVATION 5**



**ELEVATION 6**



**ELEVATION 7**

REV 06/24 (5046)



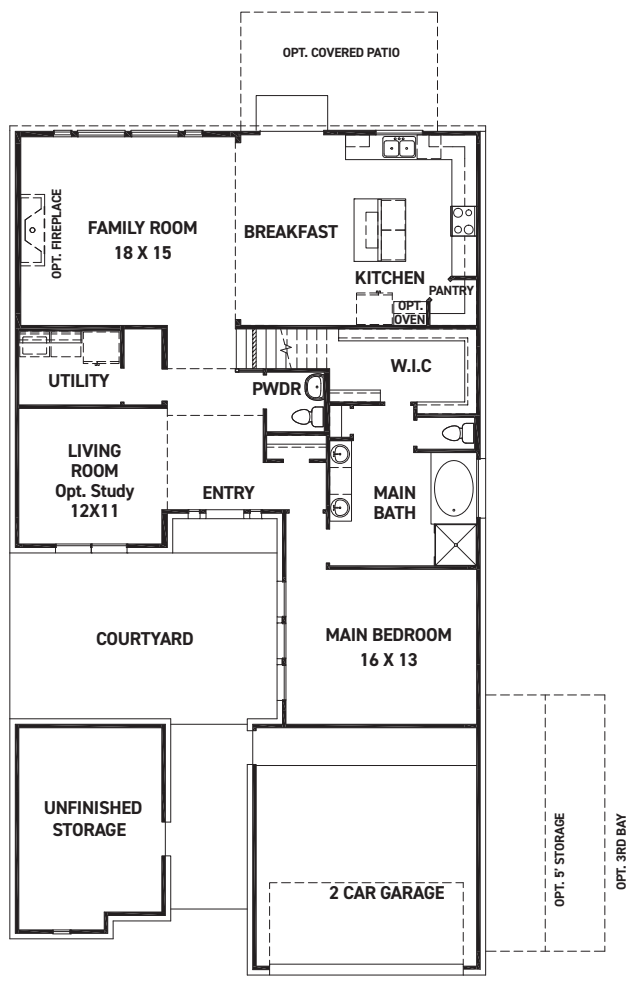
These drawings are conceptual only and are for the convenience of reference. They should not be relied upon as representations, express or implied, of the final detail of the residences. The builder expressly reserves the right to make modifications, revisions, and changes it deems desirable in its sole and absolute discretion. Dimensions and square footages are approximate and may vary with actual construction. Due to design and footage requirements not all options/elevations are available in all locations.



[newmarkhomes.com](http://newmarkhomes.com)



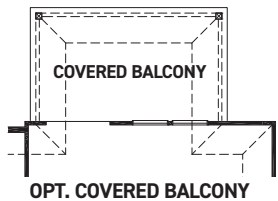
# Pozzolana



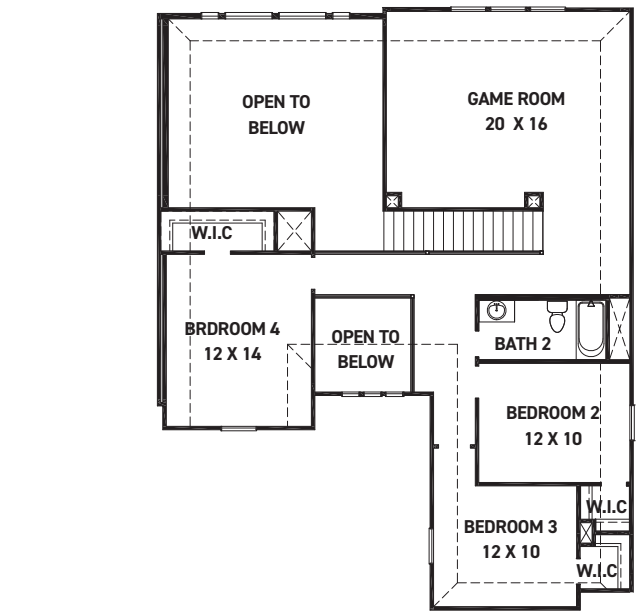
FIRST FLOOR PLAN

### FEATURES:

- 2813 SQUARE FT.
- 4 BEDROOM
- 2 1/2 BATHROOM
- 2 CAR GARAGE



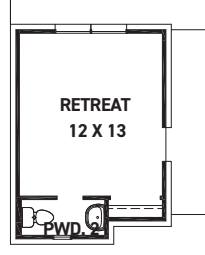
OPT. COVERED BALCONY



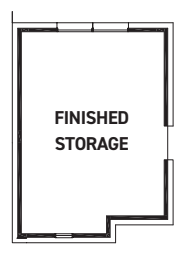
SECOND FLOOR PLAN



OPT. BEDROOM 6 / BATH 5 @ STORAGE +242 SQ. FT.



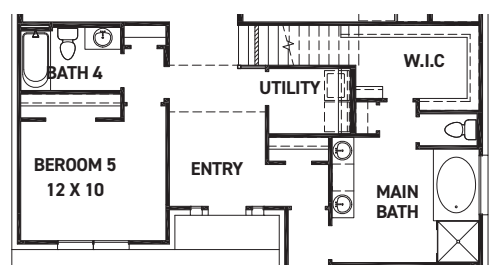
OPT. RETREAT / POWDER @ STORAGE +242 SQ. FT.



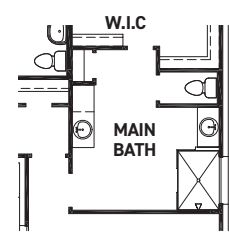
OPT. FINISHED STORAGE @ STORAGE +242 SQ. FT.



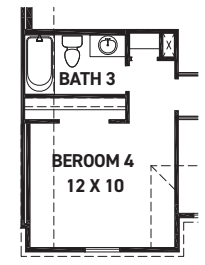
OPT. CORNER FIREPLACE



OPT. BEDROOM 5 / BATH 4 @ LIVING



OPT. ENLARGED MAIN SHOWER



OPT. BATH 3

REV 06/24(5046)



These drawings are conceptual only and are for the convenience of reference. They should not be relied upon as representations, express or implied, of the final detail of the residences. The builder expressly reserves the right to make modifications, revisions, and changes it deems desirable in its sole and absolute discretion. Dimensions and square footages are approximate and may vary with actual construction. Due to design and footage requirements not all options/elevations are available in all locations.



[newmarkhomes.com](http://newmarkhomes.com)