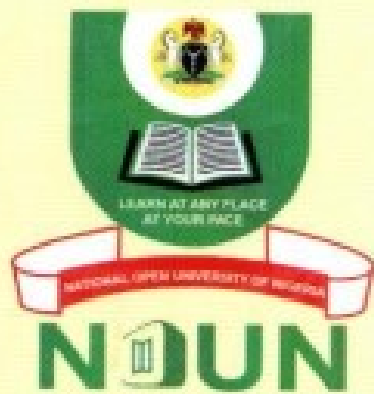


National Open University of Nigeria



**National Open
University of Nigeria**

At a glance

National Open University of Nigeria (NOUN)

Founded as NOU: July, 1983; Suspended: April, 1984

Resuscitated as NOUN: October, 2001 / 2018

Location Address:

Plot 91, Cadastral Zone, University Village,
Nnamdi Azikiwe Expressway, Jabi, Abuja.

Telephone: **+234 7064701747**

Email: centrainfo@nou.edu.ng

URL: www.nou.edu.ng

Third Edition

© NOUN, 2022

A publication of the Vice-Chancellor's Office
National Open University of Nigeria
Abuja, Nigeria



▪ The NOUN Logo is open at the top to emphasise the open nature of the university. It carries the national emblem to confirm that it is a national university; the open book at the centre indicates that you can learn at any place, at your pace and time. The colours of green and white are national colours and the red colours carrying the name of the university underscores the distinctiveness of the institution in Nigeria.

▪

*University Motto: **Learn at any place at your pace***

The University motto “Learn at any place at your pace” underscores the flexibility of options open to different learners to study what they want, when they want and where they want.



Our Vision

To be regarded as the foremost University providing highly accessible and enhanced quality education anchored by social justice, equality and national cohesion through a comprehensive reach that transcends all barriers.

Our Mission

To provide functional, cost effective, flexible learning which adds life-long value to quality education for all who seek knowledge.

Objectives

Some of the major objectives of the National Open University of Nigeria are to:

- Ensure equity and equality of opportunities in education generally but specifically in university education;
- Provide a wider access to education generally but specifically university education in Nigeria;
- Entrench lifelong learning culture;
- Provide functional education using instructional resources via intensive use of information and communication technology;
- Provide flexible, but qualitative education; and
- Reduce the cost, inconveniences and hassles militating against easy access to education and its delivery.

National Anthem

1. Arise, O compatriots,
Nigeria's call obey
To serve our father land
With love and strength and faith
The labour of our heroes past
Shall never be in vain
To serve with heart and might
One nation bound in freedom,
Peace and unity
2. O God of creation,
Direct our noble cause
Guide thou our leaders right;
Help our youth the truth to know
In love and honesty to grow
And living just and true
Great lofty heights attain
To build a nation where peace
And justice shall reign.

National Pledge

I pledge to Nigeria my country
To be faithful, loyal and honest
To serve Nigeria with all my strength
To defend her unity
And uphold her honour and glory
So help me God

NOUN Anthem

National Open University of Nigeria
Determined to be the foremost university in Nigeria
Providing highly accessible
And enhanced quality education
Anchored by social justice
Equity, equality and national cohesion

Refrain:

Come to NOUN
For quality, cost effective and flexible learning
That adds lifelong value
For all who yearn
For quality education
And for all who seek knowledge.

NOUN *at a Glance*



8
Faculties



36
Departments



100
Academic Programmes



2,700
Courses



Total Enrolled Students - 687,586
Total Active Students - 110,431

Key Priorities of NOUN



Learning Support



eLearning Infrastructure



Quality Assurance

Gender Equity and Distribution

Students



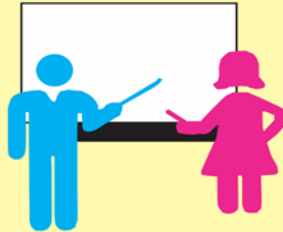
Enrolled	376,465	311,121
Registered	57,942	52,489

Programme Type



UG	298,863	254,683
PG	77,602	56,654

Full Time Academics



227 123

Librarians



21 32

Non-Teaching Staff



2,666 1,509



Skill Development Programmes



Infrastructure Development



Open Education Resources



114
Study Centres

Main Study Centre -	44
Community Study Centre -	49
Special Study Centre -	21



64,527 (49%)



66,951 (51%)

Total Number of Graduated Students from Inception to 2022

131,478



Curriculum and Content Revision



Research



International Outreach and Collaborations



Capacity Building

INTRODUCTION

The National Open University of Nigeria (NOUN) is Nigeria's leading and only specialist-provider of Open and Distance Learning (ODL) university education. It is also the country's largest tertiary institution in terms of student population. It operates from the Administrative Headquarters located at Plot 91 Cadastral Zone, Jabi, Abuja, a Liaison Office at 14/16 Ahmadu Bello Way, Victoria Island, Lagos with study centres spread across the six (6) geopolitical zones in the country. At the moment, we have one hundred and three (114) of such study centres.

BRIEF HISTORY OF THE UNIVERSITY

The Beginning

The idea of an open university in Nigeria has been with the National Universities Commission (NUC), the Nigerian government regulatory agency for all universities, since 1976. The NUC sent a memo to the Federal Military Government suggesting that an autonomous open university be established for the country during the Fourth National Development Plan (1981-85). This recommendation was accepted by the Federal Government.

The Higher Education Division of the Ministry immediately started planning the process of establishing an open university and integrating it into the existing educational system in the country. Professor Gabriel Afolabi Ojo, of the Department of Geography, University of Ife (later Obafemi Awolowo University), was appointed Chairman of the Presidential Planning Committee for the National Open University on 14th April, 1980. The Committee was inaugurated on 1st May 1980 by the Federal Government of Nigeria. Other members of the Committee included Professor A. E. Afigbo of University of Nigeria, Nsukka and Dr. Aminu Dorayi of Ahmadu Bello University, Zaria. Mr. E.C.C. Uzodinma served as the Secretary but was later replaced by Mr. Olamogoke.

The terms of Reference of the Committee were to:

- work out the educational functions of the University and formulate proposals on the form that they should take;
- draw up guidelines along which it would develop;
- operate a plan of operation so that the University could reach an enrolment target of 100,000 students in five years;
- examine ways in which radio, television, correspondence courses and face-to-face teaching could be used to attain the objectives of the Open University and make concrete corrections; and
- carry out any other assignments that would facilitate the discharge of the duties.

The Committee presented its first report in October 1980. The report, which included a draft Bill for the University, was approved by the Government and the National Open University Bill was sent to the National Assembly on 16th July 1981. In the same month, a Course Materials Production Workshop was organized by the Presidential Planning Committee. The primary aim of the workshop was to develop the topics of the syllabuses in the various courses into instructional materials which may be produced in form of correspondence texts, audio and video cassette materials, radio and television broadcasts, face-to-face teaching materials, and student assessment materials. The main focus was on the production of Foundation Year programmes that were more general in nature and as a permanent feature of the University's educational services to the public.

The workshop provided an opportunity for selected academics and representatives of media houses to interact with experts in distance teaching from within and outside the country. It paved the way for the initiation of various aspects of course material production from course design, course writing, production, packaging to delivery of the materials to the students.

In the course of one year, the course developers produced the outline of the Foundation Year Programmes and the relevant courses in a forty-four paged booklet. The course outlines were grouped into *Modules* and *Units*. A Module covers a main topic of a course, while a Unit deals with a segment of a Module, representing approximately the content that an average student is expected to cover in a week. It was made up of correspondence lecture notes, supplemented by radio and television broadcasts as deemed appropriate, and necessary follow-up exercises and directions for further readings.

Professor Gabriel Afolabi Ojo, the Chairman of the Presidential Planning Committee was appointed the University's first Vice-Chancellor on 1st September, 1981. On 23rd June, 1983, the Senate and the House of Representatives finally ratified the Bill, and on 22nd July, 1983, the Act received Presidential Assent and was Gazetted on 27th July 1983 as the National Open University Act, No 6 of 1983, thus giving the University legal basis for its existence.

From January, 1984, the first lectures of the six themes were aired weekly. Within a short time, the enrichment lectures of the National Open University filled the Nigerian airwaves and received many appreciative responses. Requests were to the National Open University directly and also through FRCN and NTA for repeat broadcasts of the lectures, which were at first aired between 18:00 and 21:00, as advertised by both the FRCN and NTA.

The operations of the University was based at the Study Centres, which were identified throughout the country, and the Study Centres Managers appointed to manage the centres in terms of students enrolment and disbursement of study materials. The University then had a nascent Senate of ten professors and about fifteen other academic staff below the rank of professors. It also had few administrative staff. The Chancellor of the University at that time was Alhaji Aliyu Obaje, the Attah of Igalaland, while the Pro-Chancellor was Alhaji Shuaibu Na'ibi, the Madakin Suleja. The Acting Registrar was Alhaji H. A. Erubu. Between March and April 1984, about 20,000 students paid a non-refundable fee of N10.00 each for application forms to the University. The University also introduced the inaugural lecture series with effect from the 1984/85 academic year, with the first lecture delivered by the Vice-Chancellor, Professor Gabriel Afolabi Ojo on 24th April 1984.

However, the operations of the National Open University were unexpectedly suspended on 25th April, 1984. The suspension of the university was announced by the then Military Head of State, Major-General Muhammadu Buhari during a budget speech. The suspension of NOU created a vacuum that led to conventional universities rushing to establish 'satellite' and 'outreach' campuses in various cities across Nigeria. The proliferation of the outreach campuses and mode of operation created a lot of concern about the quality of education being given at the satellite campuses, not the least because these universities operated the external campuses without the permission or license from the National Universities Commission, possibly because several of them were using makeshift business centres as study centres. The proliferation of satellite campuses became a source of concern to the National Universities Commission (NUC) which raised alarm about the poor quality of education being offered at the campuses. Consequently, the NUC recommended the closure of all satellite campuses and the resuscitation of the Open University system.

Further to the recommendations of the NUC, a National Workshop on ODL Policy was organised in September, 2001. The workshop had two major outcomes: first, the National Policy on open and distance education was introduced as a component of Nigeria's National Policy on Education. The second major outcome of the workshop is the resuscitation of the National Open University. As a first stage to restarting the university, as the National Open University of Nigeria, a Course Materials Development Workshop at the Confluence Beach Hotel, Lokoja, in March 2002 to write the study materials for the initial courses to be offered by the University. following the course materials workshop, the first cohort of academic and non-teaching staff were recruited and professor Olugbemi Jege was appointed as the National Coordinator of the National Open and Distance Learning Programmes.

By 15th October 2003, Professor Jege was confirmed as the substantive Vice-Chancellor of the National Open University of Nigeria (NOUN) and the University commenced full academic operations in 2004 with about 9,700 students at the Headquarters in 14-16, Ahmadu Bello Way, Victoria Island, Lagos, and at 23 study centres across the federation. The central operations of the university moved to Plot 91 Cadastral Zone, University Village, Jabi, Abuja (FCT), in March 2016.

Governance and Leadership

The President and Commander-in-Chief is the Visitor to the university, as is the case for all federal universities in Nigeria. NOUN also has a Chancellor appointed by the Visitor. There is a Governing Council, headed by the Pro-Chancellor, whose membership is constituted by the Visitor. The Vice-Chancellor is the CEO and Chief Accounting Officer of the university and is responsible for the day-to-day running of the University. The National Open University of Nigeria has had visionary leaders with international reputation from inception.

Professor Gabriel J. Afolabi-Ojo, whose tenure lasted between September, 1981 and April, 1984 was the first and only Vice-Chancellor of the National Open University (NOU) before it was suspended by the then military authorities on 25th April 1984. Prior to his appointment as Vice-Chancellor, Professor Afolabi-Ojo was a Professor of Geography at the University of Ife (now Obafemi Awolowo University). The Act that established the university was ratified during Professor Afolabi-Ojo's tenure.

Professor Olugbemi Jege was formally appointed as the first Vice-Chancellor of the rechristened National Open University of Nigeria (NOUN) by the Visitor on 15th October 2003. He held Professorial Chairs in Science Education (1990) and Open and Distance Learning (1997), as well as, the UNESCO Chair in Open and Distance Learning (2002). Already entrenched at the Open University of Hong Kong, he brought significant experience to bear on the resuscitation of the University and used his vast international network to provide a solid foundation for the National Open University of Nigeria. Staff recruitment, staff development, programme development and

national and international advocacy for NOUN were the key pillars of Professor Jedgege's pioneering administration. Professor Jedgege was Vice-Chancellor until 14th October, 2010.

Professor Vincent Ado Tenebe, was appointed as the second Vice-Chancellor of the National Open University of Nigeria on 15th October 2010 by the University Council. Professor Tenebe is a Professor of Agronomy and was the Provost of the Kaduna Campus of NOUN, and later Deputy Vice-Chancellor (Administration), prior to his appointment as Vice-Chancellor. His tenure saw the expansion of the University in terms of student population, academic programmes, staff strength and study centre growth. Significantly, it was during his tenure that the Government, through TETFund's Special Intervention Project, built a brand new campus for the university at Abuja. This was commissioned on 16th January 2016 by President Muhammad Buhari. Professor Tenebe was the Vice-Chancellor until 10th February, 2016.

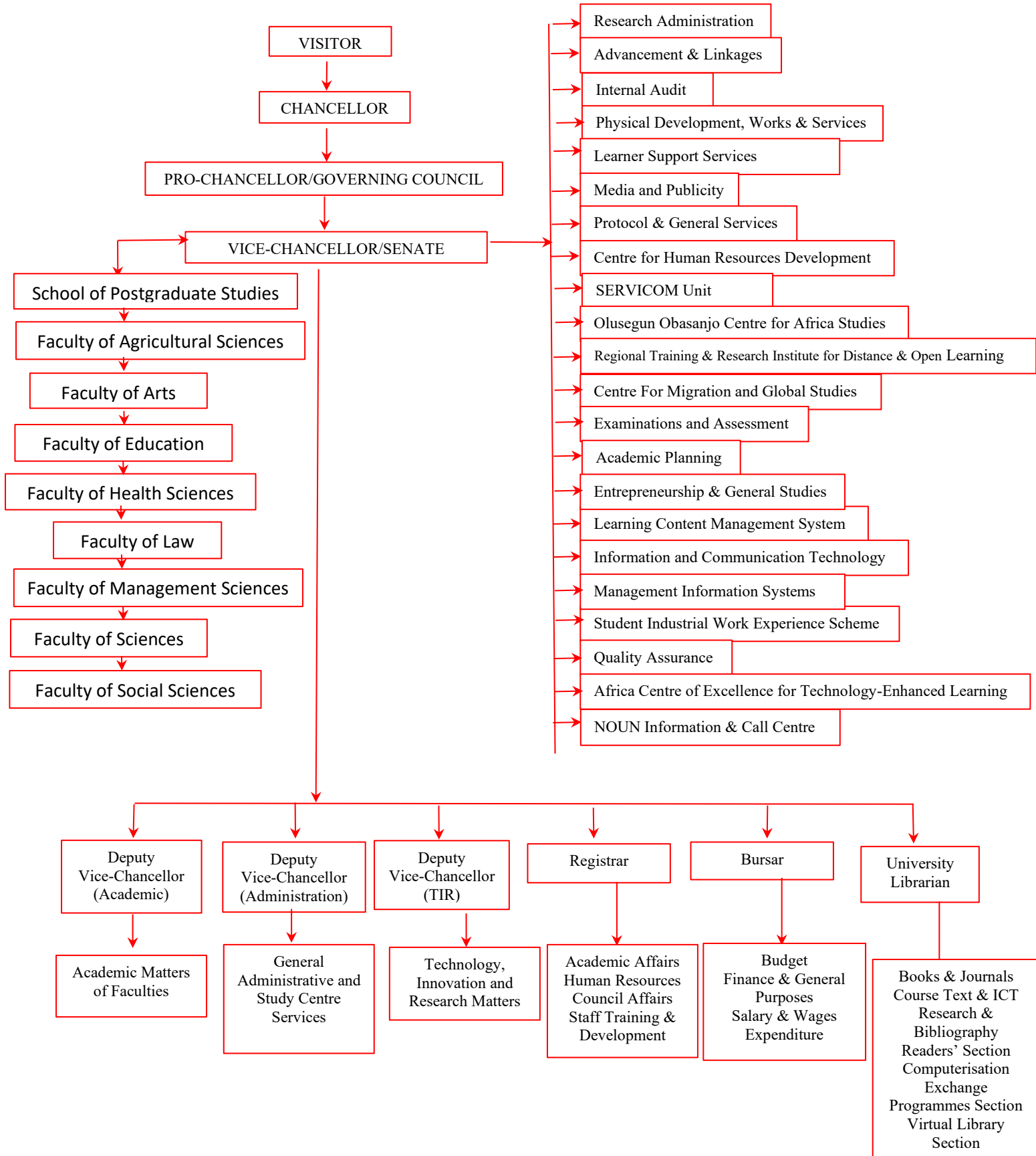
Professor Abdalla Uba Adamu became the third Vice-Chancellor of NOUN. He was appointed on 11th February 2016 by the Visitor to the university. Prior to his appointment, Professor Adamu taught at the Department of Information and Media Studies, Faculty of Communication, Bayero University Kano. He holds double professorships in two disciplines. He is first a Professor of Science Education (1997) and later a Professor of Media and Cultural Communication (2012). It was during his tenure that the University moved its headquarters from Lagos to Abuja on 29th March 2016. Professor Adamu was Vice-Chancellor until 10th February, 2021.

Professor Olufemi A. Peters was appointed as the fourth Vice-Chancellor on Thursday, December 3rd, 2020 by the University Council. Professor Peters has undertaken a number of pioneering roles in the University, having been the first Dean, School of Science and Technology (2003-2006); first Director, Examinations and Assessment (2006-2008); and first Deputy Vice-Chancellor (Academic) (2008-2010). He was the Director, Academic Planning (2011-2013). Professor Peters also has the distinction of being the first academic to be elevated to the rank of Professor in NOUN. Professor Peters took over the leadership of NOUN on 11th February, 2021.

The organisational structure of the University is depicted below in a flow diagram. The President of the Federal Republic of Nigeria is the Visitor. The Governing Council is the highest policy making body of the University. The Senate is the principal academic decision-making body of the University

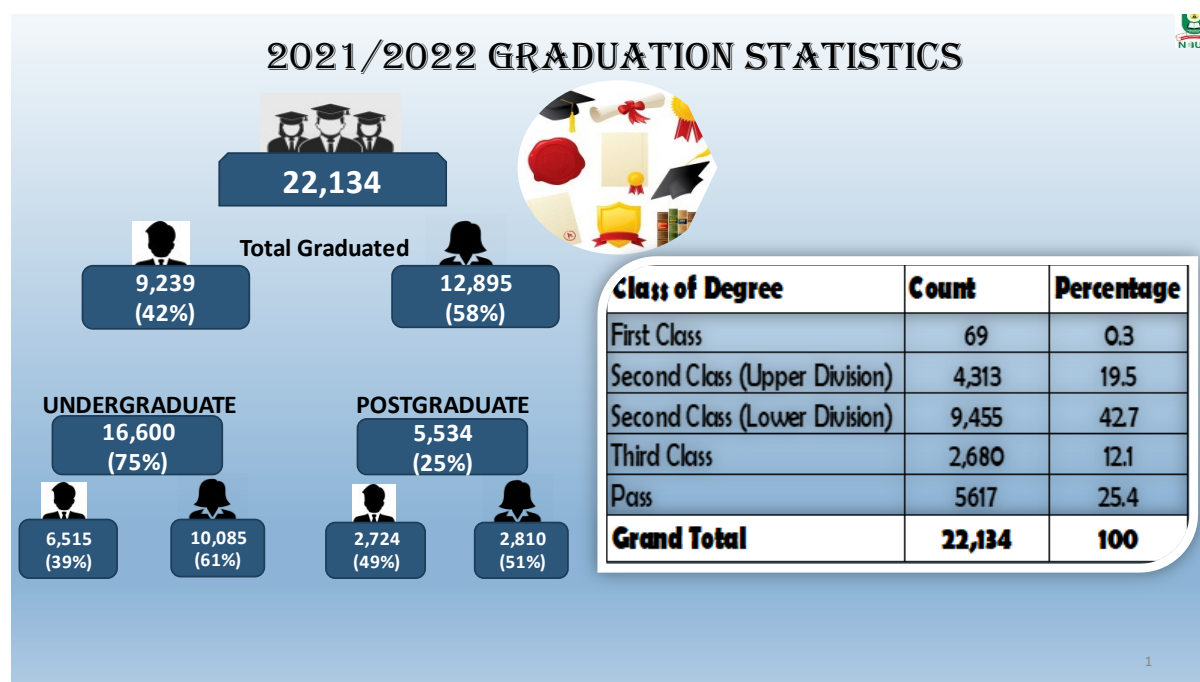
ORGANISATIONAL STRUCTURE

The organisational structure of the University is depicted below in a flow diagram. The President of the Federal Republic of Nigeria is the Visitor. The Governing Council is the highest policy making body of the University. The Senate is the principal academic decision-making body of the University.

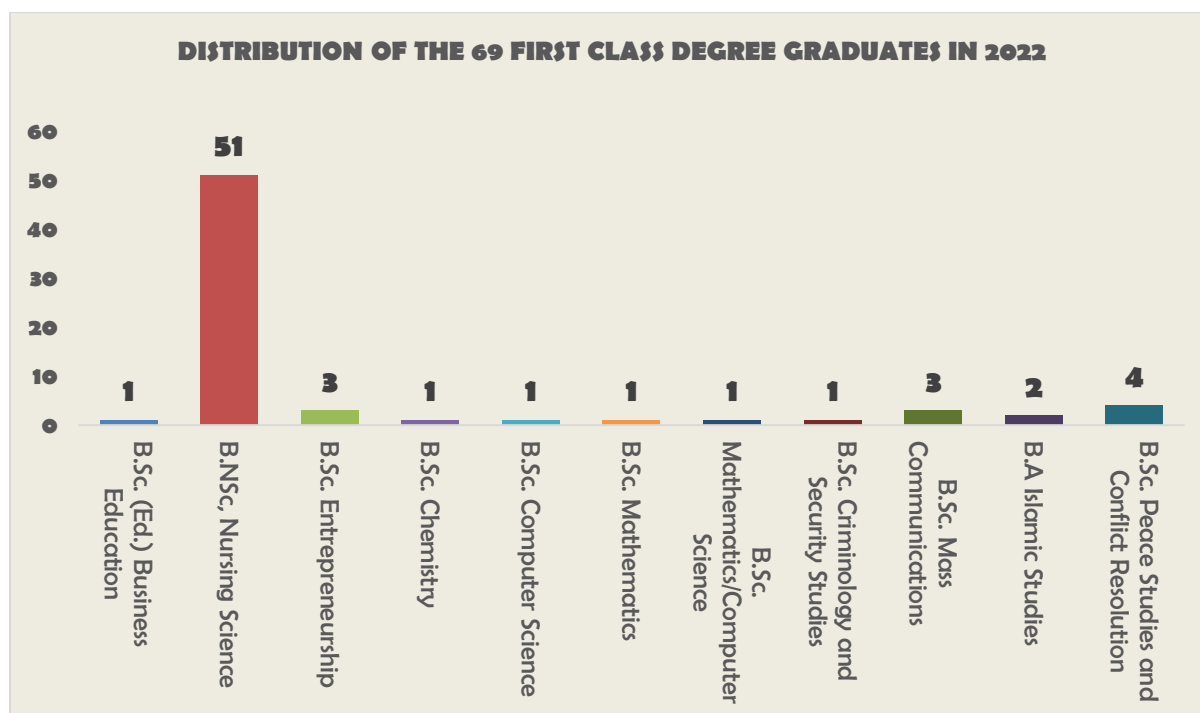


Present Status and Next Steps

One of the significant milestones of Professor Peters' tenure is the proposal for the creation of the office of the 3rd Deputy Vice-Chancellor (Technology, Innovation and Research), which Council, at its 66th meeting on 14th July 2021 graciously approved bringing the number of DVCs in the university to three (3). Besides the Vice-Chancellor, NOUN has six other principal officers who support the Vice-Chancellor in the administration of the university. The three Deputy Vice-Chancellors (Academics, Administration, and Technology Innovation and Research) provide direct assistance to the Vice-Chancellor in specific areas of university governance. The other principal officers are the Registrar, Bursar and the University Librarian.



At the 11th Convocation Ceremony held on 26th March 2022, a total of twenty-two thousand one hundred and thirty-four (22,134) graduated from the University out of which sixteen thousand six hundred seventy-nine (16,600) were undergraduates while five thousand five hundred and thirty-four (5,534) were postgraduate students. There were 69 students who graduated with a first-class degree and the chart representation is shown below:



Staffing

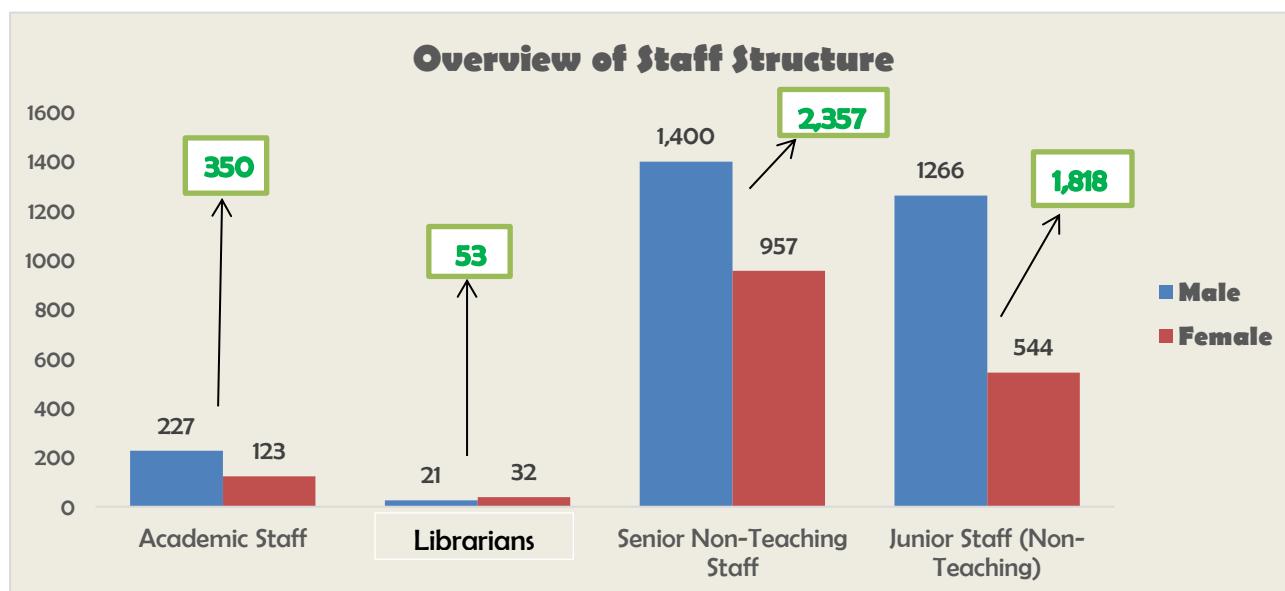
As at February 2023, NOUN has a total of four thousand six hundred and eighty (4,578) permanent staff consisting of teaching, librarians, non-teaching and junior staff, of which two thousand nine hundred and fifteen (2,915) (64%) were males and one thousand six hundred and sixty-three (1,663) (36%) were females. These staff are located at the Main Campus in Abuja and across the 108 study centres in the country.

NOUN academic faculty consists of teaching staff, of which there were three hundred and fifty (350) (227 males and 123 females). Resident at the Faculties, these staff develop learning materials, set test items, and grade students. They also provide the bulk of the online student facilitation of the University.

The teaching staff are supported by Librarians of which there are fifty-three (53) (21 male and 32 female) who provide critical information services for the NOUN staff, students as well as the general public. The Course Materials Development Unit handles all issues pertaining to course materials development and supply including overseeing the NOUN University Press, as well as the production of all study materials.

The Senior non-teaching staff are two thousand three hundred and fifty-seven (2,357) (1,400 males and 957 females). They provide administrative and technical support for all operations of the University both at the headquarters and the study centres. They are engaged in the Registry, Study centres, Security, Bursary division, ICT directorates, Media, Academic centres and so on. The one thousand eight hundred and six (1,818) (1,266 males and 544 females) junior staff cadre provides the custodial janitorial and municipal services needed for the smooth running of the University. Predominantly recruited from local communities, they serve as credible points of acceptability of the University in these communities and part of the community service rendered by the university, i.e. job provision to our host communities.

NOUN also has a category of non-permanent teaching staff, consisting of lecturers of other universities who operate at the study centres and are engaged in contractual agreements with NOUN to provide face-to-face facilitation of courses, serve as course writers/developers, course editors, research project supervisors, external examinations/project moderators, and examiners (i.e. markers of examination scripts). In all, there are over five thousand (>5,000) of such academic personnel providing learning support to NOUN students across NOUN's one hundred (100) study centres.



Teaching and Learning Systems

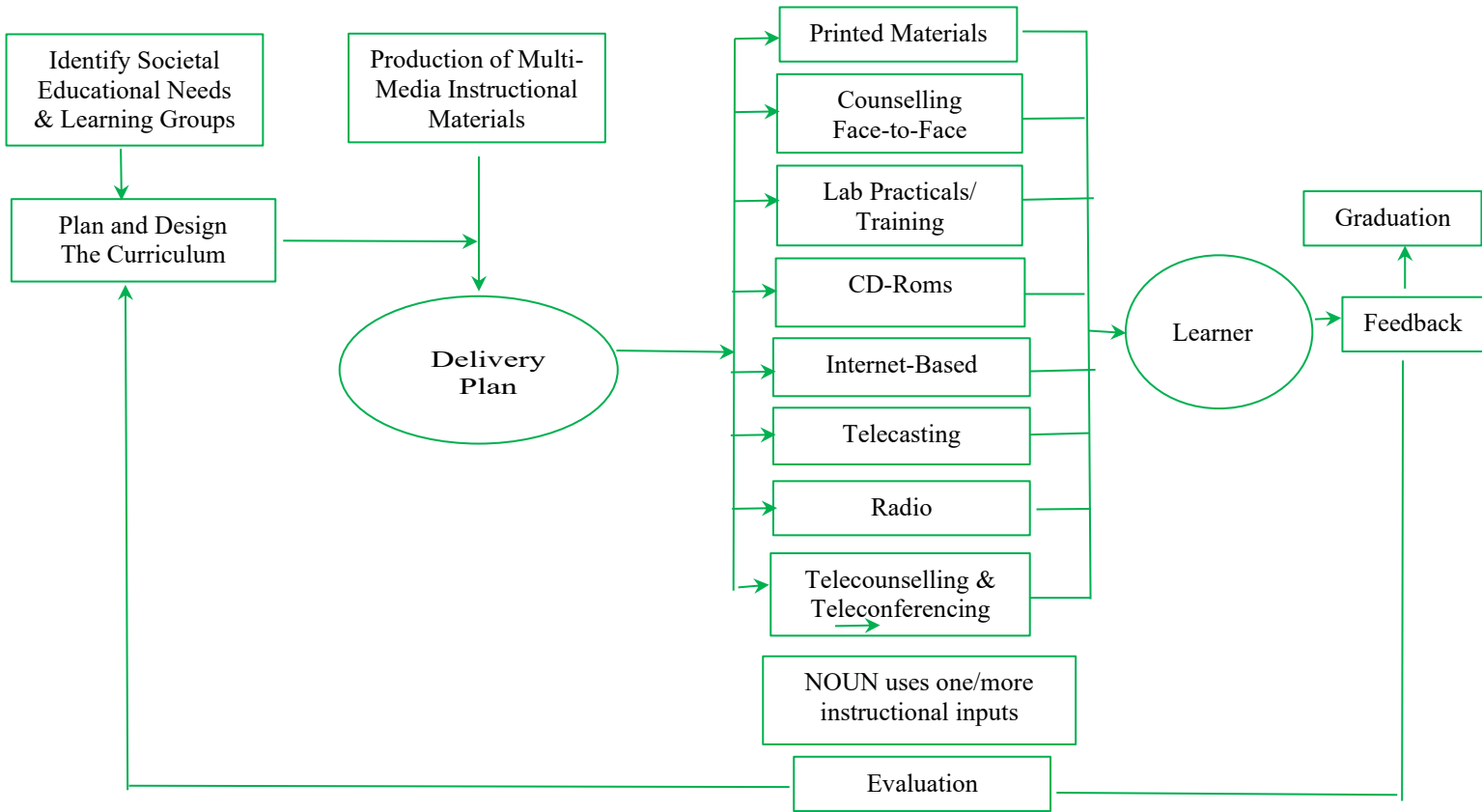
NOUN is primarily a Distance Learning Institution, providing instruction to its learners remotely through a variety of ways including the use of self-learning instructional materials, face-to-face facilitation, online facilitation, and radio/television facilitation. The course materials are self-learning instructional materials. Each course in the University is developed into modules that conform to the Benchmark Minimum Academic Standard (BMAS) prescribed by the National Universities Commission (NUC). NOUN's self-learning materials are available in print, CDs and online formats. Some are also presented as e-videos. A typical self-learning material contains course objectives, course requirements, study units, summaries, self-assessment exercises, and suggestions for further readings of books and other resources. As is the practice in ODL institutions, NOUN's self-learning materials are mostly prepared by in-house subject specialists and ODL experts. In cases where these are not available, subject matter experts are sourced both locally and internationally. Quality assurance of the self-learning materials is in form of a collaborative approach to their development which involves the subject matter expert also called the course developer, the instructional designer, the ODL expert, the language editor, and the content editor.

Following the global preference for a blended learning approach to content delivery, face-to-face facilitation is at times deployed in some of the courses to aid students' understanding of their subjects in the various study centres. However, there are courses for which face-to-face facilitation are mandatory. They include all Law courses, practical Science and Nursing Science courses as well as Research Methodology courses. The online facilitation platform provides opportunity for central coordination of every course by the faculties. The NOUN Radio, hosted at Frequency Moderation airwave, in Lagos, is equally deployed for facilitation purposes. Since the inception of the current administration, the development of instructional videos has become an important component of instructional delivery processes.

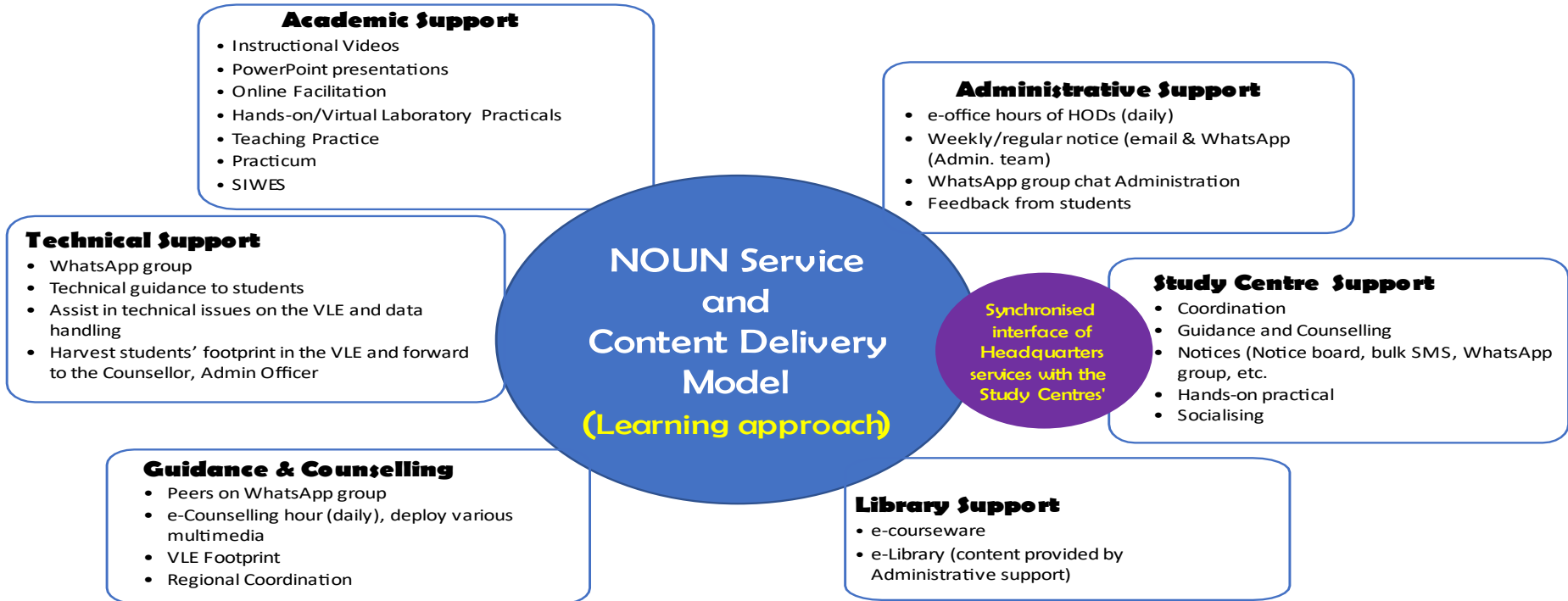
Students are regularly assessed in a variety of ways. The first of these is the self-assessment exercise which assesses students' comprehension at the end of every unit of the course. No mark is awarded for these but students are strongly advised to attempt them before proceeding to another unit. Tutor Marked Assessment (TMA) is another form of students' assessment. They comprise three (3) sets of Fill-in-the-Blank (FB) and Multiple-Choice Answers (MCAs) questions. The cumulative score in the three sets of these TMAs, per course, is graded for each student and this carries a total of 30%. The end-of-semester examination which comes at the end of each semester carries the remaining 70%. At 100 and 200 levels, e-examinations are conducted, with the exception of law courses which are undertaken as pen on paper (PoP). From 300 level and above, all examinations are conducted as pen on paper (PoP).

NOUN also deploys learning technologies in form of web, e-learning, teleconferencing, video, open educational resources (OER), and massive open online courses (MOOCs). These are driven by the strong Management Information System (MIS) and Information and Communication Technology (ICT) arms of the University.

NOUN INSTRUCTIONAL DELIVERY ARCHITECTURE



NOUN SERVICE AND CONTENT DELIVERY MODEL, NSCoDeM



INSTRUCTIONAL MODES

The key components of delivery are illustrated below.

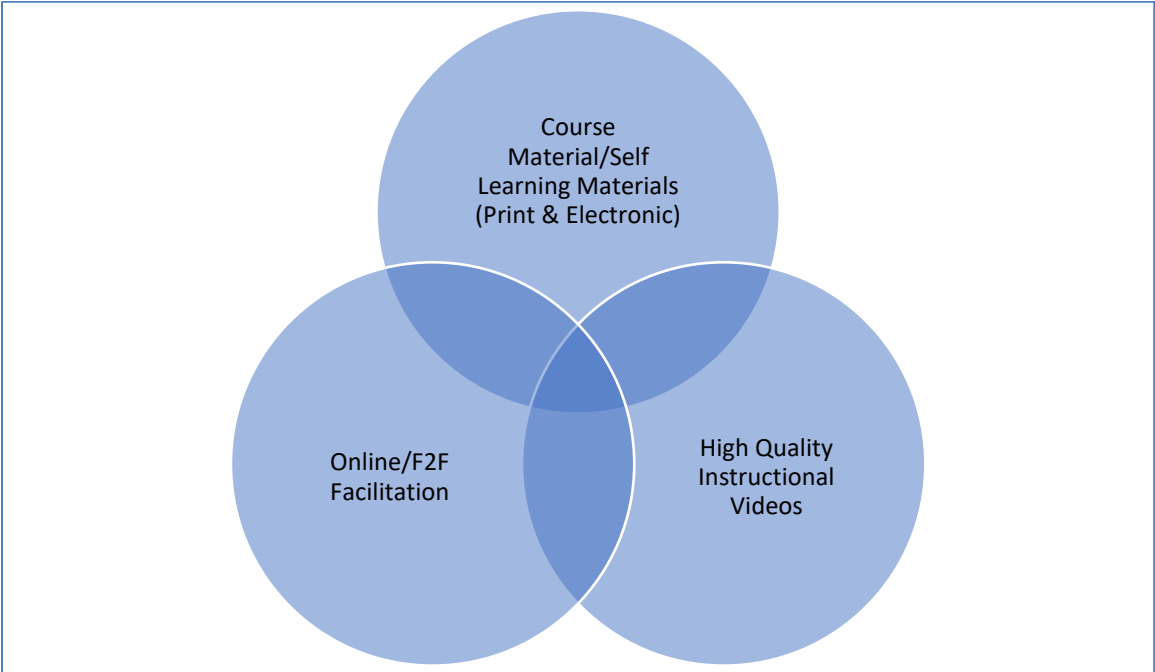


Figure 1: NOUN’s Blended Learning strategy

The processes leading to this delivery is further illustrated with Figure2

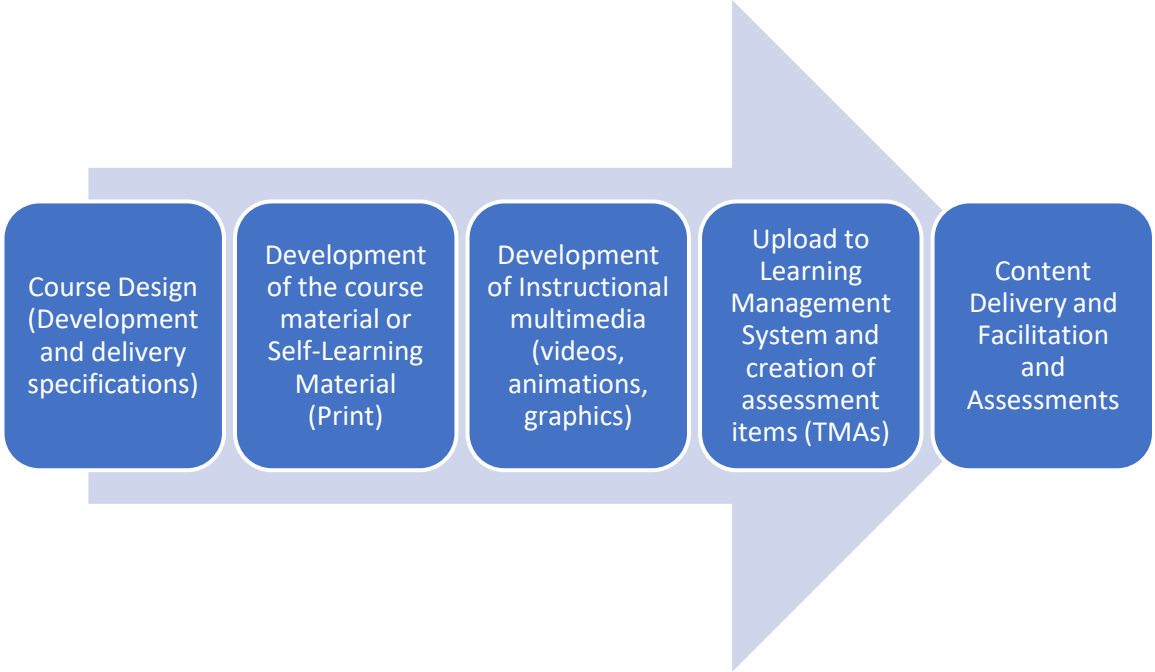


Figure 2: Main processes leading to delivery

Academic Programmes

NOUN awards degrees at the undergraduate and postgraduate levels in eight disciplinary areas. These include Agricultural Sciences, Arts, Education, Health Sciences, Law, Management Sciences, Sciences, and the Social Sciences. The postgraduate studies are just emerging from the gestation state through largely due to increased visibility of the University.

S/N	Faculty	Number of Programmes			
		Undergraduate	Postgraduate		
			PGD	M.Sc.	Ph.D.
1.	Agricultural Sciences	5	1	0	0
2	Arts	9	1	3	2
3	Education	15	1	4	5
4.	Health Sciences	3	1	0	0
5.	Law	0	1	1	1
6.	Management Sciences	7	3	5	2
7	Sciences	8	1	1	1
8	Social Sciences	10	4	3	2
	Total	57	13	17	13

The University presently offers forty-three (43) programmes at the postgraduate diploma, master and doctoral levels.

Outside these disciplinary areas, the University, through its Centre for Human Resources Development situated along Kaduna – Zaria Expressway at Rigachikun in Kaduna State, also offers short-term vocational training to artisans including prison inmates. About 530 persons have been trained through the centre in Bead making, Masonry, Hairdressing, Fashion designing, among others.

The Open Educational Resource (OER) unit equally offers short term professional online certificate courses.

Student Enrolment

Since 2021, the university has experienced improved student enrolment at both undergraduate and postgraduate levels of study. One hundred and ten thousand four hundred and thirty-one (110,431) fresh and returning students registered during the 2022_1 semester. This is an improvement on the one hundred thousand, eight hundred and eighty-seven (100,887) students registered for the 2021_2 semester. The newly registered students in those semesters were fifteen thousand two hundred and twelve (15, 212) in 2021_2 compared with the increased number of seventeen thousand nine hundred and fifty-six (17,956) in 2022_2.

The first PhD graduate of the University was the former Nigerian President, Chief Olusegun Obasanjo, who was awarded doctorate degree in Christian Theology in the year 2018. A Ph.D. in Educational Technology was awarded by the Faculty of Education to Dr. Oluwafisoye Peter Adefisoye in 2020. Three (3) other students graduated in 2022, obtaining PhD in English. They were Dr. Theodore Osagie Iyere (English), Dr. Stephen Ekere Oseafuaba (Literature in English) and Dr. Sunday Adekunle Osinloye (English). At present enrolment levels, the University has over 200 students who are now studying at the Doctoral levels at various departments. As the university stabilises its instructional delivery processes at the undergraduate levels as well as meet the challenges of the students studying at a distance, more efforts will be directed at studying at all postgraduate levels.

Student enrolment and registration across semesters in 2021 and 2022

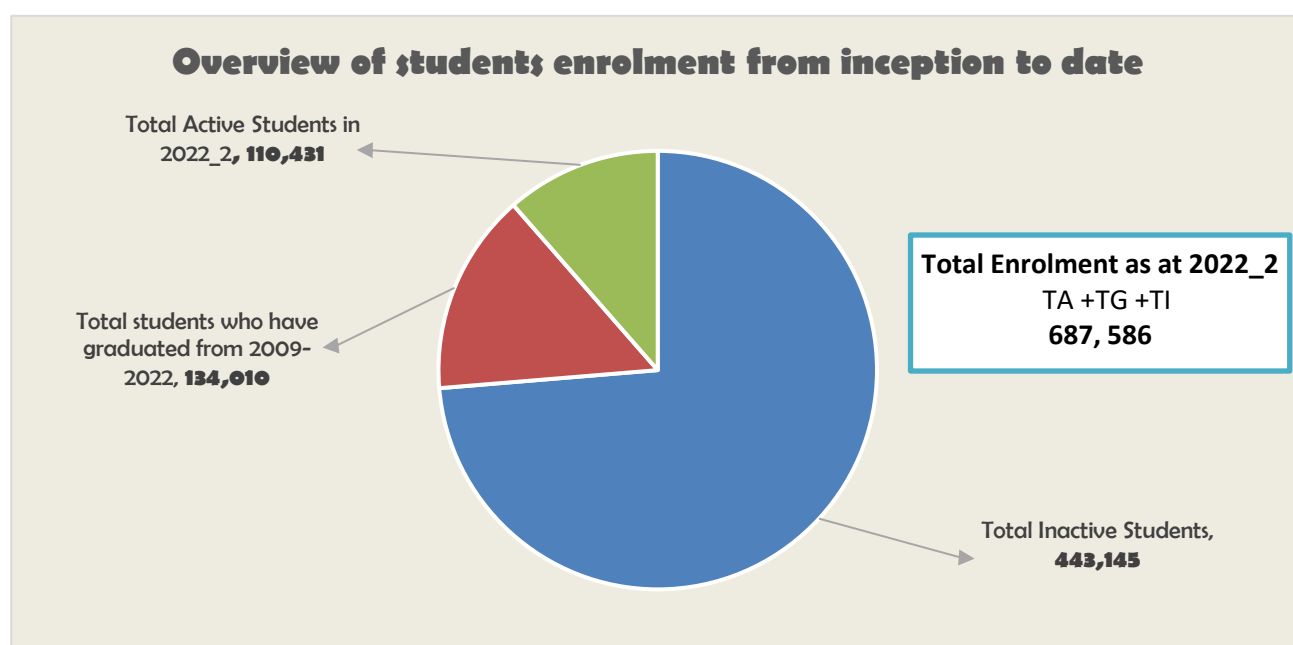
Semester	Newly Enrolled			Newly Registered			Registered (new + returning)		
	Male	Female	Total	Male	Female	Total	Male	Female	Total
2021_1	12,782	12,263	25,045	9,532	9,855	19,387	46,690	54,058	100,748
2021_2	10,307	9,641	19,948	7,561	7,651	15,212	47,197	53,690	100,887
2021 Total	23,089	21,904	44,993	17,093	17,506	34,599	93,887	107,748	201,635
2022_1	13,394	12,124	25,518	9,962	9,803	19,765	51161	56186	107347
2022_2	12,374	11,697	24,071	8,914	9,042	17,956	52489	57942	110431
2022 Total	25,768	23,821	49,589	18,876	18,845	37,721	103,650	114,128	217,778

Student population based on Geopolitical Zones and the FCT (As of February 2023)

S/N	Geopolitical Zone	Enrolled	Actively Registered
1.	South-West	261,715	36,905
2.	South-South	120,658	16,266
3.	North-Central	67,885	10,320
4.	Federal Capital Territory	106,242	23,191
5.	South-East	61,503	7,134
6.	North-West	47,080	11,005
7.	North-East	22,503	5,610
	Grand Total	*687,586	**110,431

*Global total enrolled students since inception. About **134,010** graduated out of these

**Registered totals for the Geopolitical zones



Enrolled/Registered Students Per Programme

	Enrolled Students			Registered Students 2022_1		
	Male	Female	Total	Male	Female	Total
Faculty of Agricultural Sciences						
• B. Agric. Agricultural Economics and Agro-Business	310	146	456	121	63	184
• B. Agric. Agricultural Extension and Rural Development	419	172	591	176	65	241
• B. Agric. Animal Science	478	197	675	188	84	272
• B. Agric. Aquaculture and Fisheries Management	-	-	-	-	-	-
• B. Agric. Crop Science	108	36	244	46	18	64
• B. Agric. Soil and Land Resources Management	60	21	81	22	16	38
• B.Sc. Agricultural Extension & Management	373	150	523	156	72	228
• B.Sc. Hotel and Catering Management	137	515	652	6	30	36
• PGD Agricultural Extension & Management	620	276	896	35	27	62
Faculty of Arts						
• B.A. Christian Religious Studies (or Christian Theology)	-	-	86	-	-	86
• B.A. English	2,150	4,348	6,498	218	660	878
• B.A. French and International Studies	348	416	764	5	12	17
• B.A. Islamic Studies	-	-	135	-	-	135
• B.A. French	27	51	78	13	15	28
• B.A. Philosophy	-	-	107	-	-	107
• B.A. Arabic	95	30	125	48	22	70
• B.A. Hausa	47	37	84	27	18	45
• B.A. Igbo	-	1	1	-	1	1
• B.A. Yoruba	16	13	29	10	7	17
• PGD Christian Religious Studies	-	-	84	-	-	84
• PGD Christian Theology	-	-	169	-	-	169
• M.A. Christian Religious Studies	-	-	184	-	-	184
• M.A. Christian Theology	-	-	93	-	-	93
• M.A. English	86	157	243	57	118	175
• M.A. English (Language)	11	14	25	9	12	21
• M.A. English (Literature in English)	3	3	6	3	3	6
• M.A. Islamic Studies	-	-	90	-	-	90
• Ph.D. Christian Religious Studies/Theology	-	-	5	-	-	5
Faculty of Education						
• B.A.(Ed.) Early Childhood Education	1,107	4,261	5,368	190	1,193	1,383
• B.A.(Ed.) English	1,779	4,159	5,938	237	704	941
• B.A.(Ed.) French	89	126	215	16	26	42
• B.A.(Ed.) Primary Education	2,410	5,472	7,882	334	900	1,234
• B.Sc.(Ed.) Business Education	3,600	6,782	10,382	446	995	1,441
• B.Sc.(Ed.) Agricultural Science	973	680	1,653	103	101	204
• B.Sc.(Ed.) Biology	1,326	2,641	3,967	197	504	701
• B.Sc.(Ed.) Chemistry	495	348	843	58	59	117
• B.Sc.(Ed.) Computer Science	1,223	882	2,105	217	163	380
• B.Sc.(Ed.) Integrated Science	202	282	484	25	40	65
• B.LIS (Library and Information Science)	-	-	186	-	-	186
• B.Sc. (Ed.) Health Education	-	-	378	-	-	378
• B.Sc. (Ed.) Human Kinetics	-	-	54	-	-	54
• B.Sc.(Ed.) Mathematics	-	-	44	-	-	44
• B.Sc.(Ed.) Physics	-	-	23	-	-	23
• PGD Education	-	-	13,238	-	-	13,238
• PGD Distance Education	-	-	21	-	-	21
• M.Ed. Educational Administration and Planning	-	-	14,091	-	-	14,091
• M.Ed. Educational Technology	-	-	2,269	-	-	2,269
• M.Ed. Guidance and Counselling	-	-	1,653	-	-	1,653
• M.Ed. Science Education	-	-	2,419	-	-	2,419
• Ph.D. Educational Administration	-	-	16	-	-	16

● Ph.D. Educational Planning	-	-	2	-	-	2
● Ph.D. Educational Technology	-	-	7	-	-	7
● Ph.D. Mathematics Education	-	-	-	-	-	-
● Ph.D. Science Education	-	-	10	-	-	10

Faculty of Health Sciences

● B.NSc. Nursing (new)	1,722	14,747	16,469	638	6,037	6,675
● B.NSc. Nursing (old)	1,607	9,087	10,695	19	132	151
● B.NSc. Nursing Science	289	1,433	1,722	225	1,246	1,471
● B.Sc. Nursing	5	41	46	-	-	46
● B.Sc. Community Health	-	2	2	-	2	2
● B.Sc. Dental Technology	7	3	10	3	7	10
● B.Sc. Environmental Health	-	-	-	200	340	540
● B.Sc. Public Health	5,426	8,753	14,179	1,398	1,519	2,945
● PGD HIV/AIDS Education and Management	679	719	1,398	-	-	1,398
● M.Sc. HIV/AIDS Education and Management	5	2	7	-	-	7
● M.Sc. Public Health	-	-	-	-	-	-

Faculty of Law

● LLB Law*	19,988	8,933	28,921	1,029	415	1,444
● PGD Legislative Drafting	17	14	31	-	1	1

*Students enrolled in the programme before the suspension of admission into the LLB programme. They are being mopped up till December 2023 when they will cease to exist

Faculty of Management Sciences

● B.Sc. Accounting	-	-	1,169	-	-	1,169
● B.Sc. Banking and Finance	-	-	145	-	-	145
● B.Sc. Business Administration	8,942	10,548	19,490	3,225	4,569	7,794
● B.Sc. Cooperative and Rural Development	-	-	48	-	-	48
● B.Sc. Entrepreneurship	-	-	672	-	-	672
● B.Sc. Entrepreneurship and Business Management	-	-	1	1,152	1,358	2,510
● B.Sc. Marketing	-	-	172	-	-	172
● B.Sc. Public Administration	5,648	5,909	11,557	2,575	-	5,640
● B.Sc. Business Administration	-	-	2	-	-	2
● PGD Business Administration	6,388	5,320	11,708	505	-	1,090
● PGD Public Administration	1,622	1,995	3,617	311	404	715
● PGD Entrepreneurship	-	-	214	-	-	214
● M.Sc. Business Administration	4,960	3,031	7,991	661	-	1,213
● M.Sc. Public Administration	1,670	1,250	2,920	287	-	517
● Masters of Business Administration	8,925	5,950	14,875	884	230	1,588
● Masters of Public Administration	2,566	2,278	4,844	192	704	392
● M.Sc. Entrepreneurship	-	-	371	-	-	371
● Ph.D. Business Administration	-	-	28	-	-	28
● Ph.D. Public Administration	-	-	9	-	-	9
● MPhil/Ph.D. Business Administration	-	-	8	-	-	8
● MPhil/Ph.D. Public Administration	-	-	4	-	-	4

Faculty of Sciences

● B.Sc. Biology	-	-	690	-	-	690
-----------------	---	---	-----	---	---	-----

• B.Sc. Chemistry	-	-	135	-	-	135
• B.Sc. Communication Technology	-	-	13,857	-	-	13,857
• B.Sc. Computer Science	36,963	14,276	51,239	4,975	2,068	7,043
• B.Sc. Environmental Science and Resource Management	9,377	8,882	18,259	400	395	795
• B.Sc. Information Technology	3,694	1,363	5,058	1,672	717	2,389
• B.Sc. Mathematics	1,098	248	1,346	106	40	146
• B.Sc. Mathematics and Computer Science	-	-	113	-	-	113
• B.Sc. Physics	-	-	80	-	-	80
• PGD. Information Technology	6,838	1,986	8,824	558	213	771
• M.Sc. Information Technology	8,874	2,303	11,177	938	268	1,206

Faculty of Social Sciences

• B.Sc. Criminology and Security Studies	-	-	2,305	-	-	2,305
• B.Sc. Economics	10,956	8,018	18,974	1,967	1,587	3,554
• B.Sc. International Relations	961	1,390	2,351	571	901	1,472
• B.Sc. Mass Communication	10,242	20,774	31,017	1,635	3,833	5,469
• B.Sc. Peace Studies and Conflict Resolution	-	-	1,169	-	-	1,169
• B.Sc. Political Science	-	-	1,132	-	-	1,132
• B.Sc. Tourism Studies	-	-	315	-	-	315
• B.Sc. Broadcast Journalism	66	110	175	31	61	92
• B.Sc. Development Studies	-	-	111	-	-	111
• B.Sc. Film Production	-	-	105	85	49	134
• PGD Economics	186	80	266	98	39	137
• PGD Mass Communication	536	848	1,384	99	154	253
• PGD Criminology and Security Studies	-	-	2,305	-	-	2,305
• PGD e-Business	-	-	1	-	-	1
• PGD Peace Studies and Conflict Resolution	-	-	2,818	-	-	2,818
• M.Sc. Criminology and Security Studies	-	-	509	-	-	509
• M.Sc. Journalism	-	1	1	-	-	1
• M.Sc. Mass Communication	991	1,160	2,151	117	154	253
• M.Sc. Peace Studies and Conflict Resolution	-	-	5,358	-	-	5,358
• Ph.D. Peace Studies and Conflict Resolution	-	-	29	-	-	29
• Ph.D. Mass Communication	-	-	13	-	-	13
• MPhil/Ph.D. Peace Studies and Conflict Resolution	-	-	32	-	-	32

Centre of Excellence for Technology-Enhanced Learning/Faculty of Sciences

• M.Sc. Artificial Intelligence	41	7	48	28	6	34
• M.Sc. Cyber Security	54	12	66	44	8	52
• M.Sc. Management Information System	36	8	44	23	7	30
• Ph.D. Artificial Intelligence	21	1	22	19	0	19
• Ph.D. Cyber Security	18	1	19	17	3	20
• Ph.D. Management Information System	13	3	16	9	3	12

Graduation Statistics 2021/2022 by Faculties and programme Type

S/N	Faculty	Undergraduate		Postgraduate		Grand Total	%
		M	F	M	F		
1	Agricultural Sciences	66	78	10	15	169	1%
2	Arts	107	97	30	0	234	1%
3	Education	390	1,108	630	1,096	3,224	15%
4	Health Sciences	500	3,566	9	13	4,088	18%
5	Law	636	306	1	3	946	4%
6	Management Sciences	1,424	2,030	1,003	1,063	5,520	25%
7	Sciences	708	522	415	140	1,785	8%
8	Social Sciences	2,684	2,378	626	480	6,168	28%
Grand Total		6,515	10,085	2,724	2,810	22,134	100%

Learner Support Services

Given the spatial separation between learners and tutors in the ODL system, NOUN established a vibrant Directorate of Learner Support Services (DLSS). The directorate offers guidance and counselling services to students on a wide array of issues ranging from choice of academic programmes, studying in an ODL system, social challenges; issues regarding course and examination registrations, etc. Since the study centres are the bridge for interaction between the university and its students, most of the learner support services are undertaken at the study centres. Library, Information and Communication Technology (ICT), Moot Courts, Laboratories, and even the Registry, are some of the learner support services offered to students at the study centres. The university also has a NOUN information and Call Centre (NICC) at the Headquarters that attends to students' and external stakeholders' enquiries. To conclusively resolve students' complaints timeously, the administration of Professor Olufemi Peters instituted an e-Ticketing system, which is administratively situated at the NICC. Senior non-teaching staff of the university who serve as Agents and Supervisors on the e-Ticketing system, work 24/7 and are required to conclusively resolve complaints of students within 48 hours. The Directorate of Learning Content Management System (DLCMS) is the eLearning platform that provides learning resources and support (including e-facilitation) to learners, who also access their Tutor Marked Assignments (TMAs) on the platform. The Directorate of Examinations and Assessment (DEA) also provides support services to students.

Study Centres

The university currently has one hundred and eight (108) study centres which are located in the state capitals, major towns in all the six geo-political zones of the country as well as the Federal Capital Territory (Abuja). Some of these centres have permanent NOUN structures, while others are situated within some selected Colleges of Education and Polytechnics. The Centres are grouped into categories. A recently approved administrative structure by the Council place the centres into geopolitical zones for administrative convenience. Within each of the geopolitical zone, the categories of the different centres are discernible. We have the state study centres; the community study centres; the Special correctional centres and the special studies. All state study centres are established by the University. The community centres are built up by the community it is situated. Special study centres are sited in the military and para-military formations including the Correctional centres. The centres provide an avenue for enhancing the economic development of the rural communities and alleviate poverty as well as serve as viable avenues for information and communication technology (ICT) penetration into the Nigerian society which has the capability to raise the technological literacy of the communities.

At these study centres, students have access to professional counsellors whose job is to inform, advice and guide them through their studies as long as they remain are our student. At the centres, we also have physical facilitation rooms, examination hall, ICT hall and library. It is at the study centres, that admissions into a department are checked; course registrations are done and where study materials are collected. It is also at the Centres that students seat for their examinations.

Table showing the list of Study Centres, their Locations and their respective Heads

Geo-Political Zone	S/No	Study Centre and Location	Type of Study Centre
SOUTH-SOUTH	1.	Port Harcourt Study Centre <i>Obiri-Ikwere Junction, NTA/Choba Road, Ozuoba, Rivers State.</i>	Main study centre
	2.	Benin Study Centre <i>1, Okpe Road Off Ekenwa Road, Old SDP Secretariat, Benin City, Edo State.</i>	Main study centre
	3.	Asaba Study Centre, Asaba <i>Federal College of Education (Technical), Asaba, Delta State.</i>	Main study centre
	4.	Calabar Study Centre, Calabar <i>Opposite Zone 6 Police Hqtrs (Former Teachers Training College), Calabar, Cross River State.</i>	Main study centre
	5.	Uyo Study Centre, Uyo <i>Udo-Udoma Avenue, Opposite 100 Unit Housing Estate, Beside Headquarters 2 Brigade, Nigerian Army, Uyo, Akwa Ibom State.</i>	Main study centre
	6.	Bayelsa Study Centre, Yenegoa <i>288 Mbiama/Yenegoa Road, Ekeki (Opp. Looking Good Plaza) Yenegoa, Bayelsa State.</i>	Main study centre
	7.	Emevor Community Study Centre <i>72 Emevor-Orogun Road, via Emewha Primary school, Emevor, Isoko North Local Govt. Area, Delta State.</i>	Community study centre
	8.	Owrhode Community Study Centre, Owrhode Udu Local Government Area, Oto-Udu Delta State	Community study centre
	9.	Ikom Community Study Centre Beside Government Secondary School, Ogoja Road-Ikom Cross Rivers State	Community study centre
	10.	Uromi Community Study Centre, Uromi Okpere Villa, close to Angle 90, Uromi, Edo State, Nigeria.	Community study centre
	11.	Fugar Community Study Centre, Fugar <i>Off Chief Mike Oghiadohme Way, Fugar Etsako Central LGA, Edo state</i>	Community study centre
	12.	Sapele Community Study Centre, Sapele, Delta State No 1 Igbuya Drive, off Akintola Road (By MTD) Sapele, Delta State	Community study centre
	13.	Onicha-Ugbo Community Study Centre, Asaba/Agbor highway, Onicha-Ugbo, Delta State	Community study centre
	14.	Patani Community Study Centre Along Patani/Agoloma Road by Holy Rosary Catholic Church, Ayama Quarters, Patani, Patani LGA, Delta state.	Community study centre
SOUTH-EAST	15.	Owerri Study Centre, Owerri <i>No. 63 Okigwe Road, Owerri, Imo State.</i>	Main Study centre
	16.	Umudike Study Centre, Umudike <i>National Root Crop Institute, P.M.B 7296 Umuahia, Abia State.</i>	Main study centre
	17.	Enugu Study Centre, Enugu <i>78/89 Nike-Lake Road, Enugu, Enugu State.</i>	Main study centre
	18.	Abakaliki Study Centre, Abakaliki <i>Former State Secretariat, Opposite Unity Square, Amagu Street, Off Ezza Road, Abakaliki, Ebonyi State.</i>	Main study centre
	19.	Awka Study Centre, Awka <i>Defunct Party Building, P.M.B 2017, Abagana, Anambra State.</i>	Main study centre
	20.	Awgu Community Study Centre, Awgu <i>National Youth Development Centre, Old Okigwe Road, Ori Awgu, Enugu State.</i>	Community study centre
	21.	Opi Community Study Centre, Opi <i>Behind Opi High School, Opi, or immediately after Opi Market ,Opi, Nsukka Local Government Area, Enugu State.</i>	Community study centre
	22.	Isulo Community Study Centre, Isulo, Anambra State	Community study centre

		<i>Ekwoibia-Umunze Road, Orumba South LGA, Anambra State</i>	
	23	Ohafia Community Study Centre, Asaga Ohafia, Abia State Plot 2/3 Professor Kalu Ezera Road, Asaga Ohafia, Abia State	Community study centre
SOUTH-WEST	24.	Ibadan Study Centre, Ibadan <i>Former Party Secretariat, Faith Clinic Road, Ijokodo Junction, Sango-Eleyele, P.M.B 5061, Ibadan, Oyo State.</i>	Main study centre
	25.	Abeokuta Study Centre, Abeokuta <i>NNPC Mega Station, Ogun State.</i>	Main study centre
	26.	Ado-Ekiti Study Centre <i>Federal Polytechnic Road, Beside Government College, Ado-Ekiti, Ekiti State.</i>	Main study centre
	27.	Akure Study Centre <i>Old NRC Building, Idanre Road, Ondo State.</i>	Main studycentre
	28.	Osogbo Study Centre <i>Beside St. Charles Okedo, former SDP Building, Ilesha Road, Oshogbo, Osun State.</i>	Main study centre
	29.	Lagos Study Centre, <i>14/16 Ahmadu Bello Way, Victoria Island, Lagos State.</i>	Main study centre
	30.	McCarthy Study Centre, McCarthy <i>No. 38/40 McCarthy Street, Off Obalende Road, Victoria Island, Lagos State.</i>	Main study centre
	31.	Mushin Study Centre, Mushin <i>14/16 Ahmadu Bello Way, Victoria Island, Lagos State.</i>	Main study centre
	32.	Ikorodu Model Study Centre 132B Jumofak Bus stop, Lagos Road, Ikorodu	Main study centre
	33.	Badagry Study Centre No. 1, Ajoh Street, Beside Ajara Vetho New Community Hall, Badagry, Lagos	Main study centre
	34	Lagos Mainland Study Centre formerly Special Centre Nig. Navy, Apapa <i>14/16 Ahmadu Bello Way, Victoria Island, Lagos State.</i>	Main study centre
	35	Ijebu Awa Community Study Centre <i>Km 17, Ibadan-Ijebu-Ode, Express Road, Ijebu Awa, East Local Government Area, Ogun State.</i>	Community study centre
	36	Otan-Aiyegbaju Community Study Centre 4, Ikotun Street, Oke Omi, Along Ila-Orangun Road, Otan-Aiyegbaju Osun State	Community study centre
	37	Iwo Community Study Centre <i>Old party secretariat, Opposite OSSADEP, Oyo Road, Iwo, Osun State</i>	Community study centre
	38	Isua-Akoko Community Study Centre, Isua civic centre, Ipala Quarters, Isua-Akoko, Akoko south east LGA Ondo State	Community study centre
	39	Kishi Community Study Centre Oke Ajangba, Kishi, Oyo State	Community study centre
	40	Oka-Akoko Community Study Centre, Oka-Okoko Adjacent Oke-Maria, Along Oke-Oka, Iwaro, Road Oka-Akoko, Ondo State	Community study centre
	41	Ilaro Community Study Centre, Ilaro Tunde Ibikunle/federal Polytechnic Road, Beside OCE Pharmacy, Ilaro, Ogun State.	Community study centre
	42	Okeho Community Study Centre, Okeho Okeho/ Ilua road, beside General Hospital Meseole road, Okeho, Oyo	Community study centre
	NORTH-EAST	43	Bauchi Study Centre, Bauchi <i>Former NRC Building, Federal Low Cost Housing Estate, Bauchi, Bauchi State.</i>

	44.	Gombe Study Centre, Gombe <i>After All Saints College, Gombe Federal Low Cost, P.M.B 0163, Gombe, Gombe State.</i>	Main study centre
	45.	Jalingo Study Centre, Jalingo <i>Education Resource Centre, Former T/C Staff Quarters Jalingo, Taraba State.</i>	Main study centre
	46.	Yola Study Centre, Yola <i>Army Barracks Road, Yola, Adamawa State.</i>	Main study centre
	47.	Maiduguri Study Centre, Maiduguri <i>Baga Road, P.O. Box 548, Maiduguri- Mubi Express Way, Borno State.</i>	Main study centre
	48.	Damaturu Study Centre, Damaturu <i>Former Amusement Park, Maiduguri Road, Damaturu, Yobe State.</i>	Main study centre
	49.	Azare Community Study Centre, Azare <i>Azare Old Maidugurin-Kano Bye Pass, Off Federal Low Cost , Azare, Katagum LGA, Bauchi State.</i>	Community study centre
	50.	Wukari Community Study Centre, Wukari <i>Former Local Government Lodge, Tsokundi Road, Wukari, Taraba State.</i>	Community study centre
	51.	Bogoro Community Study Centre, Bogoro Along Gobbiya Road, Marang Gwaranga Bogoro LGA Bauchi State	Community study centre
	52.	Gulak Community Study Centre, Gulak <i>Mubi North Local Government Secretariat Mubi, Adamawa State</i>	Community Study centre
NORTH-WEST	53.	Kano Study Centre, Kano <i>Independence Road, Sauna-Dakata, Kano, Kano State.</i>	Main study centre
	54.	Dutse Study Centre, Dutse <i>3rd Floor Federal Government Secretariat, Kiyawa Road, Dutse, Jigawa State.</i>	Main study centre
	55.	Zamfara Study Centre, Gusau <i>A4, Commissioner's Quarters, Bye-Pass, Gusau, Zamfara State.</i>	Main study centre
	56.	Kaduna Study Centre, Kaduna <i>Kaduna Campus (Old NETC) by Trade Fair Complex, KM 4 Zaria Road, Kaduna, Kaduna State.</i>	Main study centre
	57.	Sokoto Study Centre, Sokoto <i>Shehu Shagari College of Education, Sokoto, Sokoto State.</i>	Main study centre
	58.	Kebbi Study Centre, Kebbi <i>Emir Haruna Yahaha Road, adjacent State Scholarship Board, Birnin Kebbi, Kebbu State</i>	Main study centre
	59.	Katsina Study Centre, Katsina <i>After Katsina State House of Assembly, Kaita Road, Katsina State.</i>	Main study Centre
	60.	Airforce Special Study Centre NAF, Kaduna <i>325 Ground Training Group, Nigerian Air Force Base, Kaduna, Kaduna State.</i>	Special study centre
	61.	Kagoro Community Study Centre, Kagoro <i>Along Kagoro-Kafanchan Road, Kagoro, Kaduna State.</i>	Community study centre
	62.	Masari Community Study Centre Kafur-Katsina Road, Katsina state	Community study centre
	63.	Danbata Community Study Centre, Kano State <i>Danbatta local government secretariat, Kano State</i>	Community study centre
	64.	Makoda Community Study Centre, Kano State <i>Makoda local government secretariat, Kano State</i>	Community study centre

	65.	Kunchi Community Study Centre, Kano State Kunchi local government secretariat, Kano State	Community study centre
	66.	Dawakin Tofa community Study Centre, Kano State Dawakin Tofa local government secretariat, Kano State	Community study centre
	67.	Gwarzo, Community Study Centre, Kano State Gwarzo local government secretariat, Kano	Community study centre
	68.	Shanono Community Study Centre, Kano State Shanono local government secretariat, Kano	Community study centre
	69.	Kabo Community Study Centre, Kano State Kabo local government secretariat, Kano	Community study centre
	70.	Rimin-Gado Community Study Centre, Kano State Rimin-Gado local government secretariat, Kano	Community study centre
	71.	Bichi Community Study Centre, Kano State Behind Bichi Local Government Secretariat, Kano State	Community study centre
	72.	Tofa Community Study Centre, Kano State Behind Tofa Local Government Secretariat, Kano State	Community study centre
	73.	Tsanyawa Community Study Centre, Kano State Behind Tsanyawa Local Government Secretariat, Kano State	Community study centre
	74.	Bagwai Study Centre, Kano State Behind Bagwai Local Government Secretariat, Kano State	Community study centre
	75.	Dawakin Kudu Community Study Centre, Kano State Dawaki Road, Dawakin Kudu local Government, Kano State	Community study centre
	76.	Fagge Community Study Centre, Kano State Katsina Road, old triumph Building Fagge local government Kano	Community study centre
	77.	Kwachiri Community Study Centre, Kano State Rijiyar Lemo Beside Masama stores Fagge local government Kano sta	Community study centre
	78.	Gabasawa Community Study Centre, Kano State Local Government Secretariat Zakirai Gabasawa LGA, Kano State	Community study centre
	79.	Hadejia Study Centre, Hadejia New GRA Extension, Behind Shagari Community School Hadejia LGA, Jigawa State	Main study Centre
NORTH-CENTRAL	80.	Jos Study Centre, Jos Lomay International Hotel Road, P.M.B.0983, Bukuru, Sabon Barki, Jos, Plateau State.	Main study Centre
	81.	Ilorin Study Centre Old Party Building, Kulende Housing Estate, Ilorin, Kwara State.	Main study centre
	82.	Abuja Model Study Centre Dutse-Alhaji, Kubwa Express Way, Abuja, FCT.	Main study centre
	83.	Wuse II Study Centre, Wuse II 5 Dar-es Salaam Street, Off Aminu Kanu Crescent, Wuse II, Abuja, FCT.	Main study centre
	84.	Minna Study Centre NRC Secretariat, Opp. Mariam Babangida Girls Science College, Bosso, Minna, Niger State.	Main study centre
	85.	Makurdi Study Centre Former NDE office, Opp. Mechanic Village, Kanshio, Markurdi, Benue State.	Main study centre
	86.	Lokoja Study Centre Defunct NRC Secretariat, Opposite Bishop Dennis College, Lokoja, Kogi State.	Main study centre
	87.	Lafia Study Centre Bukan-Sidi, Jos Road, Lafia, Nasarawa State.	Main study centre
	88.	Special Study Centre for Nigerian Army P.M.B 1514 (Army School of Education) Sobi Cantonment,	Special study centre

	<i>Ilorin, Kwara State.</i>	
89.	Special Study Centre for Immigration Pension Board Office, (Immediately after Atlas Hotel) Secretariat Road, Gwagwalada, Abuja, FCT.	Special study centre
90.	Special Study Centre for Civil Defence Civil Defense Academy, Sauka, Abuja, FCT.	Special study centre
91.	Special Study Centre, NURTW Garki II Plot 1236, Sapele Street, Garki II, Abuja, FCT.	Special study centre
92.	Special Study Centre for the Nigeria Police Directorate of Police Education Complex (Beside Mopol Barracks) Suleja Express Way Deidei, Kubwa, Abuja.	Special study centre
93.	Special Study Centre, Nigerian Correctional Centre Bill Clinton Avenue, Sauka, Abuja, FCT.	Special study centre
94.	NOUN Special Study Centre, Abeokuta Correctional Centre	Special study centre
95.	NOUN Special Study Centre, Ilesha Correctional Centre	Special study centre
96.	NOUN Special Study Centre, Kaduna Correctional Centre	Special study centre
97.	NOUN Special Study Centre, Kuje Correctional Centre	Special study centre
98.	NOUN Special Study Centre, Lafia Correctional Centre	Special study centre
99.	NOUN Special Study Centre, Awka Correctional Centre	Special study centre
100.	NOUN Special Study Centre, Ikoyi Correctional Centre	Special study centre
101.	NOUN Special Study Centre, Keffi Correctional Centre	Special study centre
102.	NOUN Special Study Centre, Enugu Correctional Centre	Special study centre
103.	NOUN Special Study Centre, Port Harcourt Correctional Centre	Special study centre
104.	NOUN Special Study Centre, Kirikiri (Female) Correctional Centre	Special study centre
105.	NOUN Special Study Centre, Kirikiri (Maximum) Correctional Centre	Special study centre
106.	NOUN Special Study Centre, Kirikiri (Medium) Correctional Centre	Special study centre
107.	NOUN Special Study Centre, Umuahia Correctional Centre	Special study centre
108.	Offa Community Study Centre, Igosun Road, Offa, Kwara State	Community study centre
109.	Otukpo Community Study Centre, 59/60 Upu Road, Otukpo, Benue State.	Community study centre
110.	Ugbokolo Community Study Centre Along Otukpo-Enugu Express way, Ugbokolo, Benue State.	Community study centre
111.	Idah Community Study Centre, Behind Moda Motel, Idah, Kogi State.	Community study centre
112.	Ogori Community Study Centre, Aiyeromi Along Ogori-Ekpe Road, Before General Hospital Ogori.	Community study centre
113.	Iyara Community Study Centre, Defunct SDP Party Building Secretariat, Iyara-Kabba Road, Iyara, Kogi State.	Community study centre
114.	Isanlu Community Study Centre, Abdulsalami Oladimeji Musa Street, (former Town Hall), Isanlu	Community study centre

Education Trust Fund (TETFund), COL, and, UNESCO are some of the organizations that also provide funding support for research activities to NOUN staff.

Currently NOUN has established a number of research centres and laboratories including; Drosophila Laboratory, collaboration between NOUN and the University of Leeds, UK on Capstone Projects, and collaboration with the University of Maryland USA on Bioethics and Cancer Epidemiology in Public Health; all in the faculty of Health sciences.

NOUN Drosophila Laboratories:

The Drosophila Laboratories of the National Open University of Nigeria (NOUN) is a multi-faculty based facility that is domiciled in the Faculty of Health Sciences where it has been assigned Laboratories 1-4 in the Faculty's Laboratory Suite. The centrepiece of NDL is the common fruit fly, *Drosophila melanogaster*, which has been shown to be very versatile for research and teaching not only in the biological sciences but across disciplines. The NOUN Drosophila Laboratories has pledged to be a centre of excellence for research, training and outreach using Drosophila, in Nigeria and Africa, establishing vibrant services that provide cost-effective opportunities for research, training and advocacy.

Collaboration between NOUN and the University of Leeds, UK on Capstone Projects:

A Capstone Project (which may or may not be research-based), is a multifaceted assignment that serves as a culminating academic and intellectual experience, typically during a student's final year. It is premised on the idea that all students do not necessarily have to undertake traditional research project, but all students need to do a project that is directly applicable to the duties they are likely to perform in their workplaces. Capstone projects which originated from the United States are now trending in universities all over the world primarily because of their direct impact on employability. A collaboration was formalised between NOUN and the University of Leeds, UK on capstone project in the last quarter of 2022. The project commenced in January 2023 and would end in March and reports written in April.

Collaboration with the University of Maryland USA on Bioethics and Cancer Epidemiology in Public Health:

The University in partnership with the University of Maryland USA is developing capacity in M.Sc. Public Health in Bioethics and Cancer Epidemiology. It's a joint curriculum developed with the University of Maryland in which the centre of Bioethics Research, University of Maryland will provide tuition for the students to be enrolled and as well support them with laptops and other study materials. Facilitators will also be funded on the project by the Centre for Bioethics research.



Participants with the Consultant (from UNISA) at the Workshop on Learning Analytics organized by the University from 17th to 20th October 2022

Quality Assurance

Quality Assurance and Quality Control Methods and Processes are issues of great challenge for open and distance-learning providers in general, especially in design, development and delivery of course materials. An additional concern in the delivery of open and distance learning in Nigeria is the possible abuse of the assessment process through cheating and examination malpractices.

The Directorate of Quality Assurance has been ensuring strict compliance with academic content to conform to NUC benchmarks and global best practices. Beyond academic compliance, the DQA also checks various activities and operations of the university to ensure that they align with the prescribed quality culture. The SERVICOM Unit has the mandate of ensuring strict compliance with the Federal Government's service charter with the Nigerian people by always ensuring efficient and effective service delivery. This unit's activities align with the ongoing Federal Government's programme on Economic Recovery and Growth Plan (ERGP), as well as, the Ease of Doing Business in Nigeria (EDBN).

International Reach

NOUN is at the forefront of internationalisation of higher education in Nigeria. The University is a member of the Association of West African Universities (AWAU), Association of African Universities (AAU), African Council for Distance Education (ACDE), and International Council for Distance Education (ICDE), among others. Through these organizations, the University shares best practices with its global peers. Through conference participation and research collaboration, NOUN academics reach out to their international colleagues. As the foremost ODL institution in the West African sub-region, NOUN serves as a vehicle of distance learning to other countries in West Africa. NOUN, through RETRIDOL, has provided expertise to a number of institutions in Nigeria and within the West Africa sub-region on modalities for establishing and running distance learning institutions. The University houses the African Council for Distance Education Quality Assurance Agency (ACDEQAA).

NOUN's Involvement in capacity building in partnership with the Association of Commonwealth Universities (ACU).

- Training of 11 universities from Nigeria and Ghana in online facilitation and the use of Learning Management Systems (LMS) on the project titled Partnership for Enhanced and Blended Learning (PEBL) West Africa
- 328 academic staff across the 11 universities were trained in phase 1 of the project and in phase 2, 92 academics and ICT staff of these universities are being guided to cascade the training and institutionalise the blended learning scheme in their respective institutions.
- Each institution is training at least 120 academics and 500 students under the guidance of the National Open University of Nigeria

Capacity Building

The Staff Training & Development (ST&D) Directorate and the Regional Training and Research Institute for Distance and Open Learning (RETRIDOL) provide capacity building and professional training for academic and non-teaching staff at different cadres on a needs-basis. While the Centre for Human Resource Development (CHRD), Directorate of Entrepreneurship and General Studies (DE&GS), as well as, the Student Industrial Work Experience Scheme (SIWES) are responsible for proficiency skills training for students to enable them acquire the needed knowledge, skills and attitudes.

Milestones

Since its resuscitation in 2001, NOUN has made significant achievements in popularising ODL as a functional, effective and efficient mode of education in Nigeria. This has led to increased acceptance of NOUN and her delivery method and by extension the enrolment of students into the University. The introduction of more academic programmes at different levels mean that prospective students have a variety of choices from the wide array of programmes on offer across faculties, centres and institutes of the university. So far, about **134,010** students have graduated from the University from 2009 to-date.

The NOUN's Involvement with the NUC through the VICBHE

- The Virtual Institute for Capacity Building in Higher Education operates under the auspices of the National Universities Commission Strategy Advisory Board (STRADVCOM). NOUN's involvement with NUC through VICBHE is in four main areas. First, NOUN provides the technical infrastructure for the institute with the hosting of the VICBHE LMS portal and the emails for communicating activities are on NOUN's cloud server infrastructure. The institute also leverages on NOUN's Zoom infrastructure.
- The second area is the provision of technical support where the university's technical team supports the institute in the installation and deployment of applications and services needed to run the programs being offered by the institute.
- The third area of NOUN's involvement is in the engagement of technical and academic staff members in grading activities. VICBHE deploys many open-ended essay-type questions which require human graders. Over 80 academic and IT staff members from NOUN are regularly recruited to grade submissions from VICBHE participants.

Academic Programmes

All academic programmes offered at the institution are NUC accredited.

NUC-Accredited Programmes of NOUN

Faculty of Agriculture

- B.Agric. Animal Science
- B.Agric. Aquaculture and Fisheries Management
- B.Agric. Agricultural Extension and Rural Development
- B.Agric. Agricultural Economics and Agro-Business
- B.Agric. Crop Science
- B.Agric. Soil and Land Resources Management
- B.Sc. Agricultural Extension and Management
- B.Sc. Hotel and Catering Management

Faculty of Arts

- B.A. English
- B.A. Christian Religious Studies
- B.A. Islamic Studies
- B.A. French and International Studies
- B.A. French
- B.A. Arabic
- B.A. Hausa
- B.A. Igbo
- B.A. Yoruba

Faculty of Education

- B.A. (ED) Early Childhood Education
- B.A. (ED) English
- B.A. (ED) French
- B.A. (ED) Primary Education
- B.Sc. (ED) Agricultural Science
- B.Sc. (ED) Biology
- B.Sc. (ED) Business Education
- B.Sc. (ED) Chemistry
- B.Sc. (ED) Computer Science
- B.Sc. (ED) Health Education
- B.Sc. (ED) Human Kinetics
- B.Sc. (ED) Integrated Science
- B.Sc. (ED) Mathematics
- B.Sc. (ED) Physics
- B.LIS Library and Information Science

Faculty of Health Sciences

- B.Sc. Environmental Sciences
- B.NSc. Nursing Sciences
- B.Sc. Public Health

Faculty of Law

- LLB. (Suspended)

Faculty of Management Sciences

- B.Sc. Accounting.
- B.Sc. Banking and Finance
- B.Sc. Business Administration
- B.Sc. Cooperative and Rural Development
- B.Sc. Entrepreneurship
- B.Sc. Marketing
- B.Sc. Public Administration

Faculty of Sciences

- B.Sc. Biology
- B.Sc. Chemistry
- B.Sc. Communication Technology
- B.Sc. Computer Science
- B.Sc. Environmental Science and Resource Management
- B.Sc. Mathematics
- B.Sc. Mathematics and Computer Science
- B.Sc. Physics

Faculty of Social Sciences

- B.Sc. Criminology and Security Studies
- B.Sc. Economics
- B.Sc. Mass Communication
- B.Sc. Peace Studies and Conflict Resolution
- B.Sc. Political Science
- B.Sc. Tourism Studies

Postgraduate Diplomas (PGD)

- PGD Agricultural Extension Management
- PGD Business Administration
- PGD Christian Religious Studies
- PGD Criminology and Security Studies
- PGD Economics
- PGD Education
- PGD Entrepreneurship
- PGD Information Technology
- PGD Legislative Drafting
- PGD Mass Communication
- PGD Peace Studies and Conflict Resolution
- PGD Public Administration
- PGD Open and Distance Learning

Masters Programmes

- LL.M Law
- M.A. Christian Religious Studies
- M.A. English
- M.A. Islamic Studies
- M.Ed. Educational Administration and Planning
- M.Ed. Educational Technology
- M.Ed. Guidance and Counselling
- M.Ed. Science Education
- M.Sc. Business Administration
- M.Sc. Criminology and Security Studies

- M.Sc. Entrepreneurship
- M.Sc. Information Technology
- M.Sc. Mass Communication
- M.Sc. Peace Studies and Conflict Resolution
- M.Sc. Public Administration
- M.Sc. Public Health
- M.Sc. Artificial Intelligence
- M.Sc. Cybersecurity
- M.Sc. Management Information System

PhD Programmes

- Ph.D. Artificial Intelligence
- Ph.D. Business Administration
- Ph.D. Christian Religious Studies/Christian Theology
- Ph.D. Cybersecurity
- Ph.D. Educational Administration
- Ph.D. Educational Planning
- Ph.D. Educational Technology
- Ph.D. English Language
- Ph.D. Information Technology
- Ph.D. Law
- Ph.D. Management Information Systems
- Ph.D. Mass Communication
- Ph.D. Mathematics Education
- Ph.D. Peace Studies and Conflict Resolution
- Ph.D. Public Administration
- Ph.D. Science Education
- MPhil/Ph.D. Business Administration
- MPhil/Ph.D. Peace Studies and Conflict Resolution
- MPhil/Ph.D. Public Administration



NATIONAL OPEN UNIVERSITY OF NIGERIA

University Village Plot 91, Cadastral Zone, Nnamdi Azikiwe Expressway, Jabi, Abuja

INTRODUCING

Student's Support/e-Ticketing System

Lodge your complaints online at:

support.nou.edu.ng

- Dedicated Team Resolves Issues Within 24 Hours
- User-friendly Interface
- Tracks Progress and Provides Real-time Updates
- Hassle-free Complaint Resolution
- Students Access to Statement of Results

.....Always available to resolve your complaints



Scan Me

support.nou.edu.ng
nicc@nou.edu.ng