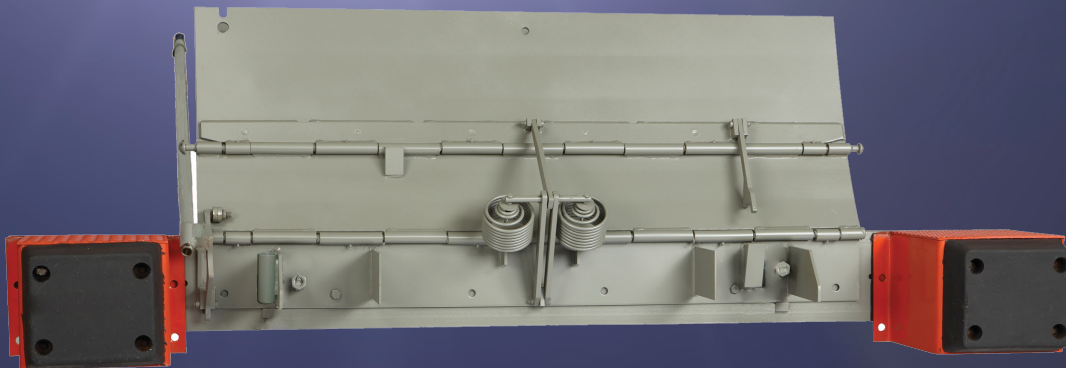




... YOUR PARTNER IN  
LOADING DOCK SAFETY AND EFFICIENCY SOLUTIONS



**NOVA MECHANICAL EDGE-OF-DOCK LEVELERS**

# NOVA MECHANICAL EDGE-OF-DOCK LEVELERS



*\*Mechanical edge-of-dock leveler shown with heavy duty bumpers*

When dock space is limited or the working range of a full size, pit-style leveler is not needed; NOVA's edge-of-dock levelers are an economical option. Edge-of-dock levelers mount to the dock face and provide a working range of 5-inches above and 5-inches below the dock.

## FEATURES AND BENEFITS

- Dual-extension spring lift mechanism
- Heavy-duty self-storing steel lever with EZ grip handle
- Roller-bearing lift mechanism for easy lifting
- Cold-rolled steel hinge pins for added strength and long life
- Grease fittings
- Heavy-duty bumper block assemblies with reinforced rubber molded bumpers
- Bumper/blockout projection, 15-inches

## ROBUST PERFORMANCE AND DURABILITY

- Milled lip edge for smooth tire rollover
- Leveler lip and deck are constructed with high-strength 55,000 PSI minimum yield steel safety tread plate
- Four steel gussets for added strength and extended life
- Full-width distribution bar for extra durability
- Deck construction is capacity dependent to insure your loading bridge matches the demands of the facility

NOVA's Mechanical Edge-of-Dock Levelers offer a variety of sizes and capacities with a standard operating range of 5-inches above and 5-inches below dock.

NOVA MODEL	DECK WIDTH	TOTAL UNIT WIDTH	CAPACITIES (CIR)*
NL-66	66"	104"	20,000 lbs 25,000 lbs
NL-72	72"	110"	30,000 lbs 35,000 lbs
NL-78	78"	116"	
NL-84	84"	122"	*CIR = Comparative Industry Rating

## WARRANTY

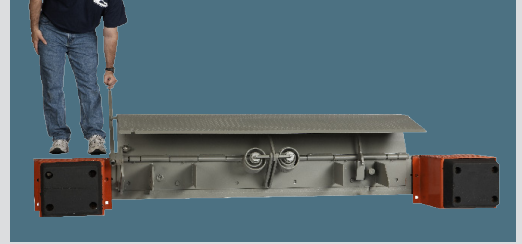
All NOVA Mechanical Edge-of-Dock models feature a full one (1) year base warranty on all structural and mechanical parts, including freight and labor charges, in accordance with NOVA's standard warranty policy.



**WARNING:** This product can expose you to chemicals including lead, which are known to the State of California to cause cancer or birth defects or other reproductive harm. For more information go to [www.P65Warnings.ca.gov](http://www.P65Warnings.ca.gov)

## SIMPLE OPERATION

- Place the handle in the side-mounted receiver and pull back on the lever approximately 50°
- Next push the lever toward its original position using the positioning rivet
- Leveler is deployed
- To store simply repeat the process until the lip clears the trailer and allows the unit to collapse into its stored position or when truck departs the leveler will automatically return to the stored position



*Simple operation*

## INSTALLATION METHOD

- For new construction, a flush or recessed 8 to 12-inch embed channel is the standard requirement and strongly recommended; the unit is then welded to the embed channel in the foundation wall
- For existing docks without a preferred embed channel, but with an angle embedded at the front edge of the dock, the EOD is welded across the top angle and anchored to the face of the dock, or an optional approach ramp can be added on the dock floor for additional strength
- For docks with no steel embed material of any kind, a formed angle, or independent approach, faceplates are available to maximize the strength of installation



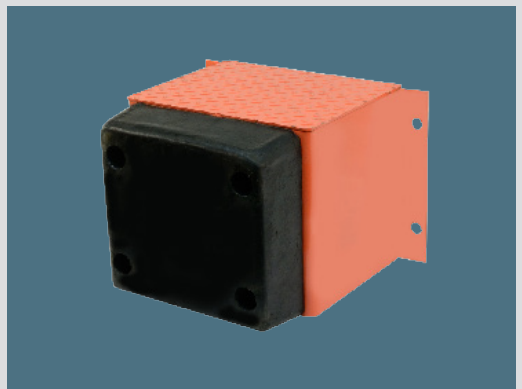
*Embed Channel*

## BUMPERS AND BLOCKOUTS

- Properly designed dock bumpers help protect the deck plate and building from the approaching truck
- Constructed of formed steel and incorporate a full height internal gusset for extra support
- Feature 4-inch thick reinforced rubber molded bumpers
- Every leveler is shipped standard with 12 x 13-inch heavy-duty bumper blocks

## OPTIONAL FEATURES

- Low-profile design (flat center plate)
- 17-inch lip (for refrigerated trailers with rear step)
- Tapered lip (tapered at sides)
- Recessed installation packages for mini-pits
- Torsion spring
- EOD angles and transition plates
- 3-inch run-off guards
- EOD embed channel 10-inches height (highly recommended for new construction)
- Other options available—consult NOVA



*Heavy-duty bumper blocks*

**1-800-236-7325**  
[www.novalocks.com](http://www.novalocks.com)



# LOADING DOCK EQUIPMENT PRODUCTS BUILT FOR SAFETY, RELIABILITY AND STRENGTH



## VEHICLE RESTRAINTS

The most effective way to prevent accidents caused by trucks and trailers from prematurely pulling away from docks during loading and unloading.



## DOCK LEVELERS

Allow forklifts to make a smooth, safe transition between loading dock and trailer, reducing the effects of dock shock and the jarring that occurs when a lift truck crosses between the warehouse floor and trailer bed.



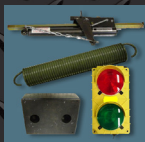
## SEALS AND SHELTERS

A wide variety of designs to fit your facility's needs for vehicle type, door size, dock height, driveway grade, dock traffic and weather conditions.



## SAFETY BARRIER PRODUCTS

Reduce your risk of injury as well as damage to your building, equipment and products.



## LOADING DOCK ACCESSORIES

Comprehensive line of loading dock accessories and loading dock aftermarket products to improve safety, productivity, security and environmental control.

Since 1986, NOVA has been providing innovation and reliability to the loading dock industry. We manufacture and distribute a comprehensive line of vehicle restraints, mechanical, air-powered and hydraulic dock levelers, edge-of-dock levelers, dock seals and shelters, safety barrier products, and other loading dock accessories to improve safety, productivity, security and environmental control.

For a dealer in your area or for additional information on routine service, preventative maintenance, product questions, or to request a quote, contact NOVA Technology.



1-800-236-7325

[www.novalocks.com](http://www.novalocks.com)