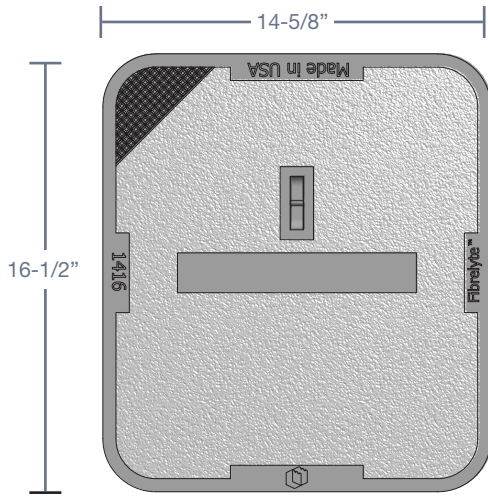


1416 Composite Covers

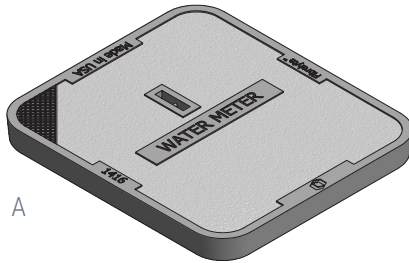


COVER

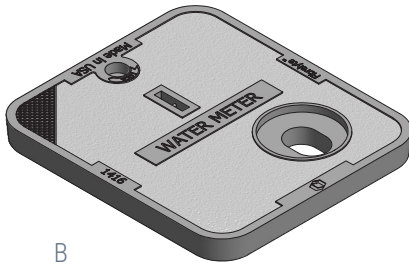
Material: Composite
 Style: Flush Solid
 Model: 14" x 16"
 Weight: 16.5 lbs
 Surface: Slip Resistant
 Performance: 20K

OPTIONS

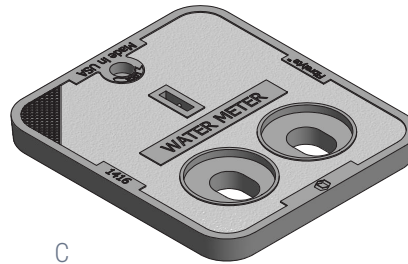
- Logos and Special Markings
- (A) Flush Solid
- (B) AMR
- (C) Double AMR
- Hex Head Bolt
- Penta Head Bolt
- Vandal Resistant Bolt
- L Bolt



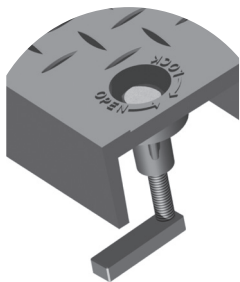
A



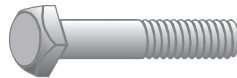
B



C



L Bolt



Standard Thread



Hex Head



Penta Head



Vandal Resistant



MEDIUM DUTY
ANSI/SCTE TIER 8

WARNING: Cancer - www.P65Warnings.ca.gov

All information contained on this sheet is current at the time of publication. Oldcastle reserves the right to discontinue or update product information without notice.

Revision 01/17/19

For use in non-vehicular traffic situations only. Weights and dimensions may vary slightly. Actual load rating is determined by the box and cover combination.

© 2019 Oldcastle Infrastructure, Inc.