

**FL36** Composite Covers

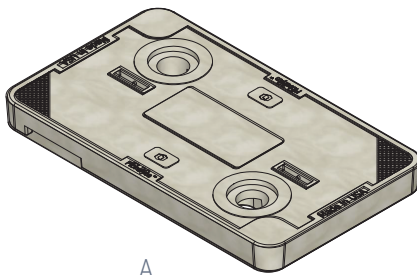


**COVER**

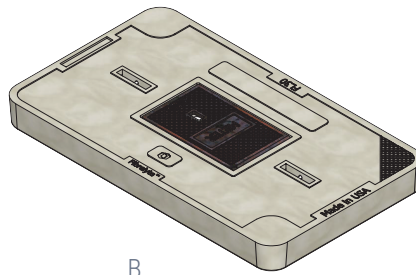
Material: Composite  
 Style: Flush Solid  
 Model: 17" x 30"  
 Weight: 35 lbs  
 Surface: Slip Resistant  
 Performance: 20K

**OPTIONS**

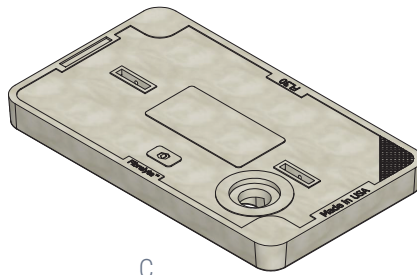
- Logos and Special Markings
- (A) Flush Solid
- (B) Reader Door
- (C) AMR
- (D) AMR and Reader Door
- Hex Head Bolt
- Penta Head Bolt
- Vandal Resistant Bolt
- L Bolt



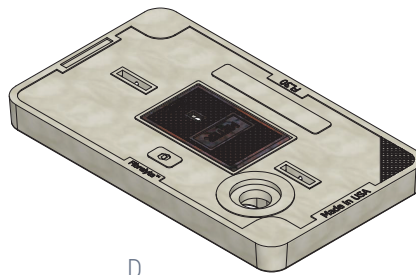
A



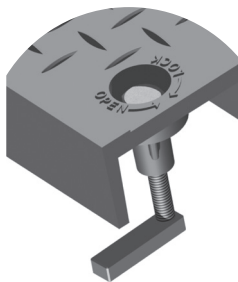
B



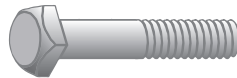
C



D



L Bolt



Standard Thread



Hex Head



Penta Head



Vandal Resistant



**MEDIUM DUTY**  
ANSI/SCTE TIER 8

**WARNING:** Cancer - [www.P65Warnings.ca.gov](http://www.P65Warnings.ca.gov)

All information contained on this sheet is current at the time of publication. Oldcastle reserves the right to discontinue or update product information without notice.

Revision 01/17/19

For use in non-vehicular traffic situations only. Weights and dimensions may vary slightly. Actual load rating is determined by the box and cover combination.

© 2019 Oldcastle Infrastructure, Inc.