

Underground Enclosures

Product Offerings

Oldcastle Infrastructure is working with engineers, contractors, and suppliers across the world to deliver the most efficient, high-quality products, with products lines designed to protect the critical infrastructure running below our feet for the irrigation, potable water, energy and communications markets.

[Handholes](#) | [Meter Boxes](#) | [Meter Pits](#) | [Pull Boxes](#) | [Valve Boxes](#)

Carson®

Carson® high-density polyethylene (HDPE) enclosures deliver reliable, chemical and water resistant performance and install with ease. The Carson brand offers a wide variety of sizes and is preferred and specified by industry professionals nationwide. You can depend on the trusted Carson brand, delivering reliable hand holes, valve boxes, meter boxes and vaults for nearly 50 years.

  **Pedestrian • Tier 8**



Carson® Heavywall BCF

Carson® Heavywall meter boxes are a lightweight alternative to concrete. Made using our Structural foam molding process and designed to exceed 20,000 lb. vertical load (20k); these boxes also providing the Best in Class lateral load rating of any plastic box on the market today. Extra wide shoulders beneath the lid seat as well as increased footer on the bottom provide the largest amount of anti-setting surface area of any meter box on the market today.

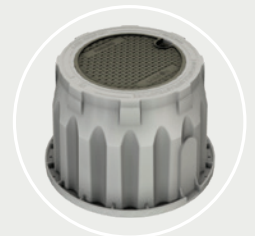
 **20K**



Carson® NexGen

Carson® NexGen meter pit system is attractively priced and prepared for the AMR/AMI advances to come. Easy to order, easy to ship, and easy to manage.

 **20K**



Fibrelyte®

Fibrelyte® manufactured from an exclusive composite formulation of polyester resin, fiberglass and calcium carbonate yields lightweight, high strength enclosures. This proprietary composite material is stronger, easier to handle and much lighter than concrete, saving both time and money during installation, service work and transportation.

 **Tier 8**



Oldcastle FRP

The Oldcastle FRP family of enclosures are produced in a unique hybrid process bonding strong, polymer concrete rings with high-impact resistant fiberglass sidewalls, forming a monolithic body. Paired with polymer concrete lid, select units are suitable for light or heavy incidental traffic. Specifiers can meet expected load ratings while installers can handle and modify with ease.

 Tier 15



Duralite®

The performance you need – the ease of installation you love. The Duralite® family of enclosures delivers unexpected Tier 15 load rating performance in the lightweight enclosure category. Engineered to withstand heavy loads, Duralite intelligently blends composite materials to provide durable, accessible security to our necessary infrastructure.

  Tier 15 • Tier 22



Oldcastle Polymer

Oldcastle Polymer enclosures deliver strength and durability like traditional concrete, but at a fraction of the weight. The Oldcastle Polymer brand offers a broad range of sizes and configurations to meet your needs. These enclosures provide medium to heavy duty solutions for vaults, splice boxes and meter boxes ideal for any industry – municipal water, telecommunications, and other commercial and industrial applications.

  Tier 15 • Tier 22



Christy®

Christy® concrete enclosures deliver reliable, cost-effective performance. The Christy brand offers a wide variety of sizes making it the preferred choice for many applications. You can depend on the trusted Christy brand, delivering reliable hand holes, valve boxes, meter boxes and vaults to the utility market for over 40 years.

  Pedestrian • Traffic



Trusted partnerships.
Full scale solutions.



www.oldcastleinfrastructure.com | (888) 965-3227