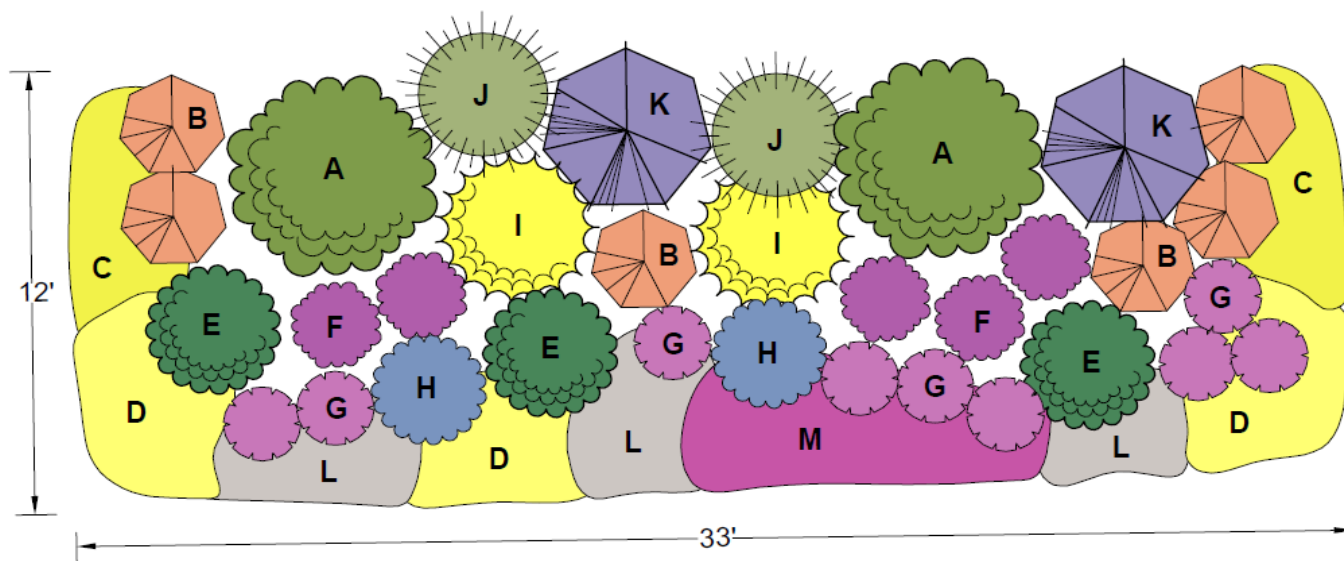


CHAPARRAL/XERIC MIXED BORDER

This shrubby garden has a natural feel to it, blending native and adapted plants in a casual but full manner. Foliages are attractive and mostly fine-textured, with several evergreen plants to add winter interest. Long-bloomers add color from late spring to fall. Many of the flowers attract butterflies, hummingbirds, and bees. For added late winter and early spring color, consider adding the bulbs listed below amid the lower-growing plants in the foreground of the planting. To add interest the first couple of years in the area where the shrubs are filling in, consider planting the short-lived plants listed for that purpose. This design can be used as a perimeter planting: just repeat to the length needed. It can also be widened into a broader bed with the larger plants in the center or spine by planting its mirror image on the other side. This garden needs full sun and dry conditions, and will thrive in a lean, unamended soil.



PLANT LIST:

Plant Select® plants are in bold

- A. Apache Plume -or- Fernbush (2)
- B. Sunset Hyssop -or- Sonoran Sunset® Hyssop** (6)
- C. Kannah Creek® Buckwheat -or- Snow Mesa Buckwheat** (12)
- D. 'Shimmer' Evening Primrose (12) -or- Silver Blade® Evening Primrose (9)
- E. Panchito Manzanita -or- Pawnee Buttes Sand Cherry** (3)
- F. Mojave Sage -or- Blue Flame Hyssop** (5)
- G. Red Rocks® Penstemon -or- Greek Valerian** (9)
- H. Big Catmint (2)
- I. Spanish Gold® Broom -or- Lydian Broom** (2)
- J. Giant Sacaton -or- Heavy Metal Switchgrass** (2)
- K. Russian Sage -or- Blue Mist Spirea** (2)
- L. Sea Foam Artemisia (6) -or- Partridge Feather** (16)
- M. Winecups (3) -or- Table Mountain® Ice Plant** (15)

Additional Plants:

- Corsican Violet (12) randomly in front 2' of bed to self-sow year after year

If desired, fill in around shrubs with the following short-lived plants while the shrubs grow to size:

- Red Feathers (9)
- Prairie Jewel® penstemon (9)
- Grand Mesa penstemon (9)
- Moon Carrot (9)

Bulbs:

- Blue Snow Iris (50)
- Deep Blue Grape Hyacinth (50)
- Species Tulip 'Bright Gem' or 'Bronze Charm' (50)
- Lipstick Tulip 'Tinka' or 'Cynthia' (50)

Find more designs and inspiration at plantselect.org!

Designer Lauren Springer Ogden

Lauren Springer Ogden designs both public and private gardens. Her book *The Undaunted Garden* is the mountain region's all-time best-selling garden book. She also coauthored the award-winning *Plant-Driven Design* and *Passionate Gardening*. She has also introduced numerous plants to the nursery trade, and Lauren and her work have been featured in national and international publications, and on radio and television.

www.plantdrivendesign.com

