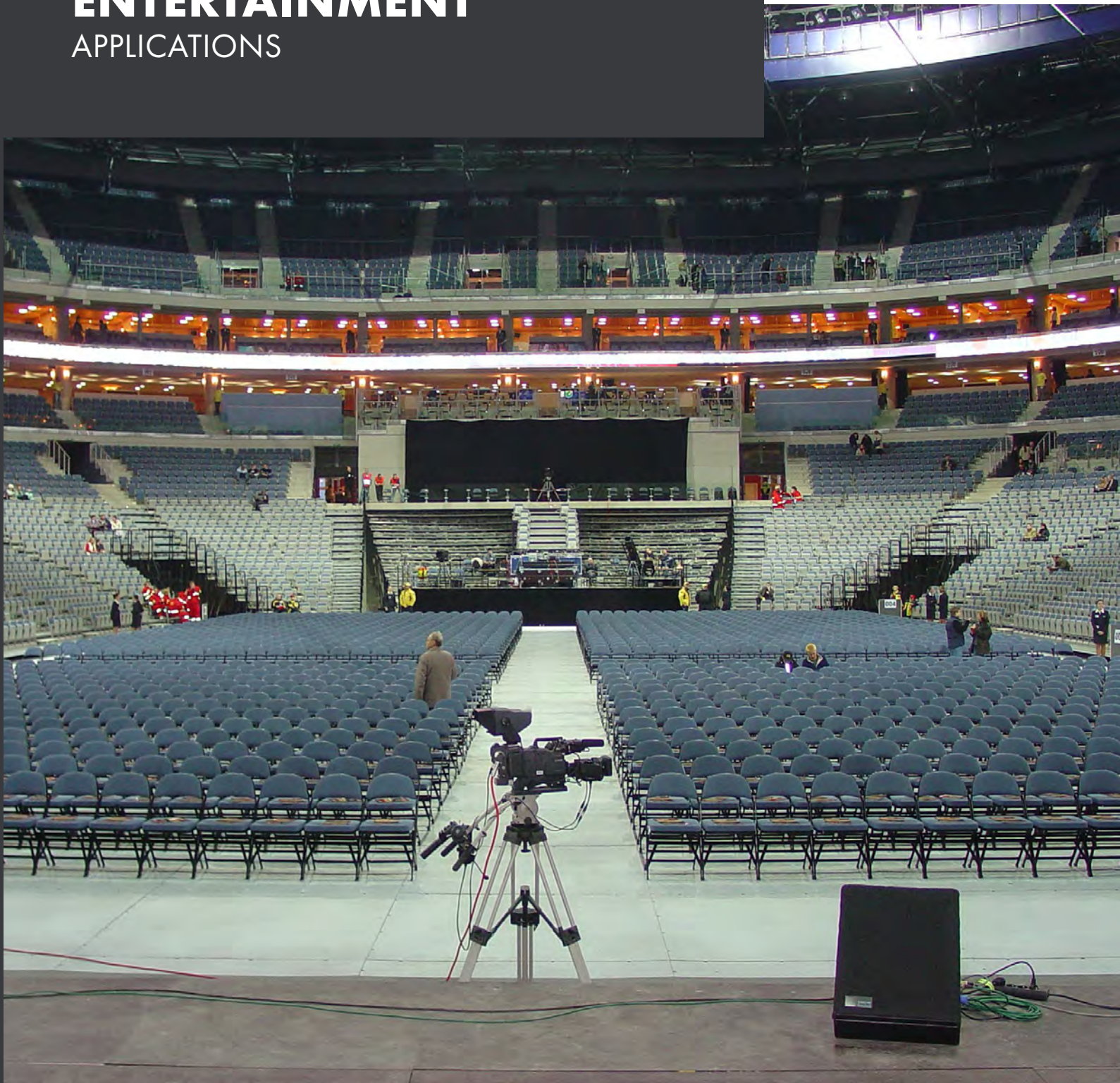




CHECKERS

Justrite Safety Group

ENTERTAINMENT APPLICATIONS



MATS FOR PROFESSIONAL USE

Notrax[®] is one of the world's largest integrated manufacturers of dust control and industrial floor mats for professional use. Our commitment is to make quality products and to continue looking for innovative ways of serving our customers. Notrax[®] mats are manufactured for industrial and commercial environments and are subject to rigorous testing for safety, quality and durability according to American and European quality norms and standards. Notrax[®] provides innovative matting solutions for ergonomics, slip prevention, cleaning and hygiene, ESD, health and safety for manufacturing, janitorial, food service, production, logistics, education, health care, events and entertainment, and many more industries.



GROUND PROTECTION

Ground protection mats are a critical safety solution in the construction, transmission, and landscaping industries. Checkers[™] mats are manufactured from composite material, giving them longer lifespans than wood options. Featuring both heavy duty mats capable of supporting cranes and other heavy equipment, as well as light duty access mats for trucks and construction equipment, the Checkers[™] line is diverse enough to provide a ground protection solution for any application. Don't let swampy or rugged terrain derail projects; Checkers[™] mats keep both vehicles and people moving with traction patterns designed to maximize grip and safety.

VEHICLE & MOTION SAFETY

Checkers[™] vehicle and motion safety products provide safety solutions for "motion-related" activities, such as vehicular and pedestrian safety on job sites. Checkers[™] provides a wide variety of products, including wheel chocks, warning whips, barricade lights, industrial beacons and strobes, parking lot safety solutions, vehicle identification signs, and composite cribbing. These products are manufactured with high quality materials and sound methods, which has allowed Checkers[™] to create the most durable safety solutions in the industry. Our chocks are known worldwide, and are a staple of every mine site. As the strongest and lightest chock on the market, the Checkers[™] chocks makes correct position easy, keeping both people and vehicles safe. Checkers[™] whips and signals are long lasting and extremely bright, ensuring visibility and safety. And our parking lot safety solutions, including parking curbs, speed bumps, and speed humps, are designed with premium durable rubber which allows these products to outlast and outperform the competition.

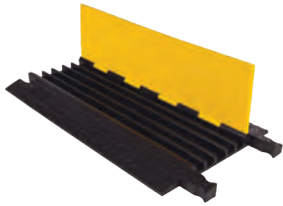
CABLE/HOSE PROTECTION

Checkers[™] cable management systems are used in a multitude of industries to prevent damage to cables and hoses as well as to protect pedestrians and vehicles from being exposed to the cables. Checkers[™] cable protectors feature a durable polyurethane construction that is simultaneously stronger and lighter weight than similar rubber or metal products. This portability makes setting up Checkers[™] cable protectors simple and easy, while the durability gives the products a much longer life span. Checkers[™] offers solutions for a variety of applications, ranging from heavy duty mining to indoor office applications, with model features including hinged lids, drop-over, open-top, and low-profile, and ADA ramps, ensuring that Checkers[™] has a solution for every type of cable and application.

ENTERTAINMENT APPLICATIONS

CABLE PROTECTION

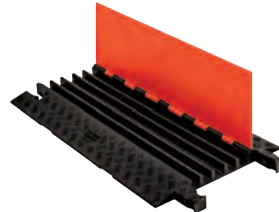
Checkers manufactures the most extensive line of high performance cable protection products in the world. These durable systems protect valuable electrical cables, cords and hose lines from damage while providing a method of safe passage for pedestrian traffic, vehicles and heavy duty equipment.



YELLOW JACKET SERIES

Model # YJ5-125

- Introduced over 30 years ago, the "original" cable protector
- Dog Bone Connectors to extend to any length
- Recommended for applications with heavy volume vehicle traffic
- ⚠️ **WARNING:** Below



GUARD DOG SERIES

Model # GD5X125

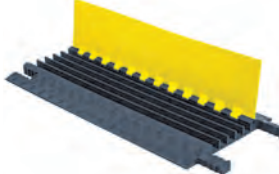
- Checkers' most versatile option
- For pedestrian traffic and over-the-road vehicles
- Ideal for: Utility, Industrial, Entertainment
- ⚠️ **WARNING:** Below



FASTLANE SERIES

Model # FL2X1.75

- Fast drop-over installation
- Compact, low profile design
- 1 and 2 Channel options
- ⚠️ **WARNING:** Below



GRIP GUARD SERIES

Model # GG5X125

- Lightweight construction - only weighs 12.75 lbs.
- Gripper Connectors to extend to any desired length
- Snap Fit™ hinged lid for easy cable placement
- ⚠️ **WARNING:** Below



FIREFLY SERIES

Model # FF5X125

- High-visibility lid colors
- Battery-powered LED lights (red or blue) built in to side ramps
- Interconnects directly to a standard cable protector with a Dog Bone Connector
- ⚠️ **WARNING:** Below



TRANSPORT CARTS

Model # CT4W-ST

- Easy way to transport and store up to 10 cable protectors
- Includes front wheel locks
- Durable black powder-coat paint finish
- Rugged, tubular steel frame



⚠️ **WARNING:** This product can expose you to chemicals including Carbon Black, Titanium Dioxide, Formaldehyde, and Benzyl Butyl Phthalate, which are known to the State of California to cause cancer and birth defects or other reproductive harm. For more information go to www.P65Warnings.ca.gov.

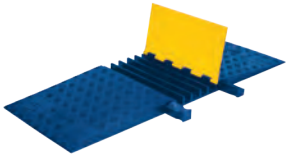
ADA/DDA ACCESSIBILITY RAMPS

Accessibility ramp system is manufactured to meet ADA and DDA compliant specifications and provides a safer crossing for vehicle and pedestrian traffic while protecting valuable electrical cables and hose lines. The gradual slope and slip-resistant surface ensure a safer crossing point for wheelchairs, carts, forklifts, vehicles with small wheels and heavy trucks.

YELLOW JACKET SERIES ADA/DDA

Model # YJ5-125-ADA

- Protects cables and hoses up to 1.325" outside diameter
- ADA/DDA accessibility ramps built in
- Connects directly to a Standard Ramp 5-Channel Yellow Jacket Cable Protector with Dog Bone Connector
- **⚠ WARNING:** Below



ACCESSIBILITY RAMPS

Model # CPRP-GD3

- Patented, modular ADA/DDA Compliant ramps
- Allows easy access to cables and cords
- Ramps can be added as needed
- One person installation - no tools required
- **⚠ WARNING:** Below



AMS ACCESSIBILITY RAMPS

Model # AMS KIT 1

- Sectioned into pieces for easy setup and transport
- Features bright yellow ramps for easy visibility
- Includes blue ADA side ramps to eliminate ramp drop off
- **⚠ WARNING:** Below



⚠ WARNING: This product can expose you to chemicals including Carbon Black, Titanium Dioxide, Formaldehyde, and Benzyl Butyl Phthalate, which are known to the State of California to cause cancer and birth defects or other reproductive harm. For more information go to www.P65Warnings.ca.gov.

ENTERTAINMENT APPLICATIONS

PARKING SAFETY SOLUTIONS

Checkers™ traffic safety products are efficient, high quality parking lot safety solutions. Designed for speed reduction, these solutions keep roads and parking lots safe for both motorists and pedestrians. Checkers™ speed bumps, speed humps, and car stops are long lasting, easy to install, and environmentally friendly.



PARKING STOP

Model # 16101Y

- Helps protect the front of vehicles
- Prevents damage to structures
- Highly visible & extremely durable
- Ideal for indoor or outdoor residential parking
- ⚠️ **WARNING:** Below



SPEED HUMP

Model # 23500V

- Slows traffic to 10-15 mph
- Interlocking design expands to any road width
- Maintains continuous traffic flow
- Made from vulcanized rubber
- Anti-skid surface
- ⚠️ **WARNING:** Below



SPEED BUMP

Model # 26111

- Slows traffic to 2-5 mph
- Made from 100% recycled tires
- In-molded reflective tape and cat eye reflectors enhance visibility
- Can be installed for temporary or permanent use
- ⚠️ **WARNING:** Below



RUBBER WALL GUARD

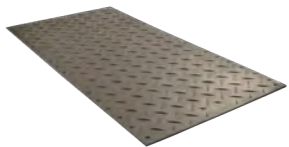
Model # CG900

- High impact virgin rubber
- Long lasting and cost efficient
- Easily installed by 1 person
- Used for temporary or permanent installation
- High visibility
- ⚠️ **WARNING:** Below

⚠️ **WARNING:** This product can expose you to chemicals including Arsenic, Cobalt, Cadmium, Lead, Chromium, Nickel Compounds, which is known to the State of California to cause cancer and birth defects or other reproductive harm. For more information go to www.P65Warnings.ca.gov.

GROUND PROTECTION

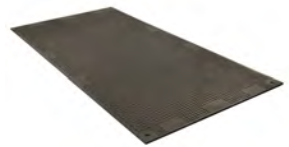
Whether you need to protect sensitive turf, or provide extra traction, Checkers™ ground protection solutions have you covered. Checkers™ mats can be connected together to form roadways or walkways, and with a wide variety of traction patterns, weights, and designs, they are applicable to nearly every industry.



ALTURNAMAT

Model # AM48

- Bold cleat tread for great traction
- Mats can be locked together with Turn-A-Links forming a continuous roadway
- Translucent material available to allow sunlight to reach grass
- ⚠️ **WARNING:** Below



VERSAMAT

Model # VM48

- Flat tread design is easy to walk on
- Virtually eliminates ground restoration costs from vehicle damage
- Easy to handle
- ⚠️ **WARNING:** Below



⚠️ **WARNING:** This product can expose you to chemicals including Lead, Carbon Black, Chromium, Nickel Compounds, and Sulfur Dioxide, which are known to the State of California to cause cancer and birth defects or other reproductive harm. For more information go to www.P65Warnings.ca.gov.

MATS FOR PROFESSIONAL USE

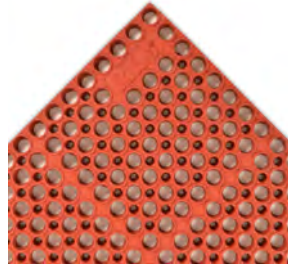
Notrax® mats are top end matting solutions designed for comfort, cleanliness, and facility protection. With a wide variety of products available, we have a mat to suit your needs. From anti-fatigue matting to food service matting, our products span a diverse group of industries and applications.



ANTI-FATIGUE MATTING

Model # 440

- Ergonomic foam mats great for booth vendors
- Can easily be hosed off and swept clean
- Lightweight, can be moved/handled easily



FOOD SERVICE MATTING

Model # 543

- Solid or drainage mats available for kitchen areas or food vendors
- Made from a heavy-duty rubber compound that is resilient to most oils and greases

⚠ WARNING: This product can expose you to chemicals including diisodecyl phthalate which is known to the State of California to cause birth defects or reproductive harm, and 2-mercaptobenzothiazole which is known to the State of California to cause cancer. For more information, visit www.P65Warnings.ca.gov.



CARPET MATTING

Model # 130

- Provides moisture and dirt retention at entrances, lobbies, and walkways
- Vinyl backing reduces mat movement
- Blends style with functionality



CUSTOM LOGO MATTING

Model # 193

- Dye injection manufacturing process ensures long lasting and vibrant colors
- Heavy duty vinyl backing creates friction and prevents sliding
- Made from high quality fiber



ENTERTAINMENT APPLICATIONS

ICE ARENA PRODUCTS

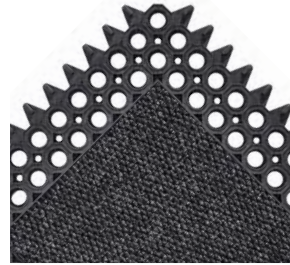
Notrax® mats are top end matting solutions designed for comfort, cleanliness, and facility protection. With a wide variety of products available, we have a mat to suit your needs. From anti-fatigue matting to food service matting, our products span a diverse group of industries and applications.



SLABMAT™

Model # 040

- Built with indestructible rubber
- Shock absorbing construction
- Modular design allow for on-site customization
- Textured top surface for traction



MASTERFLEX™

Model # 593

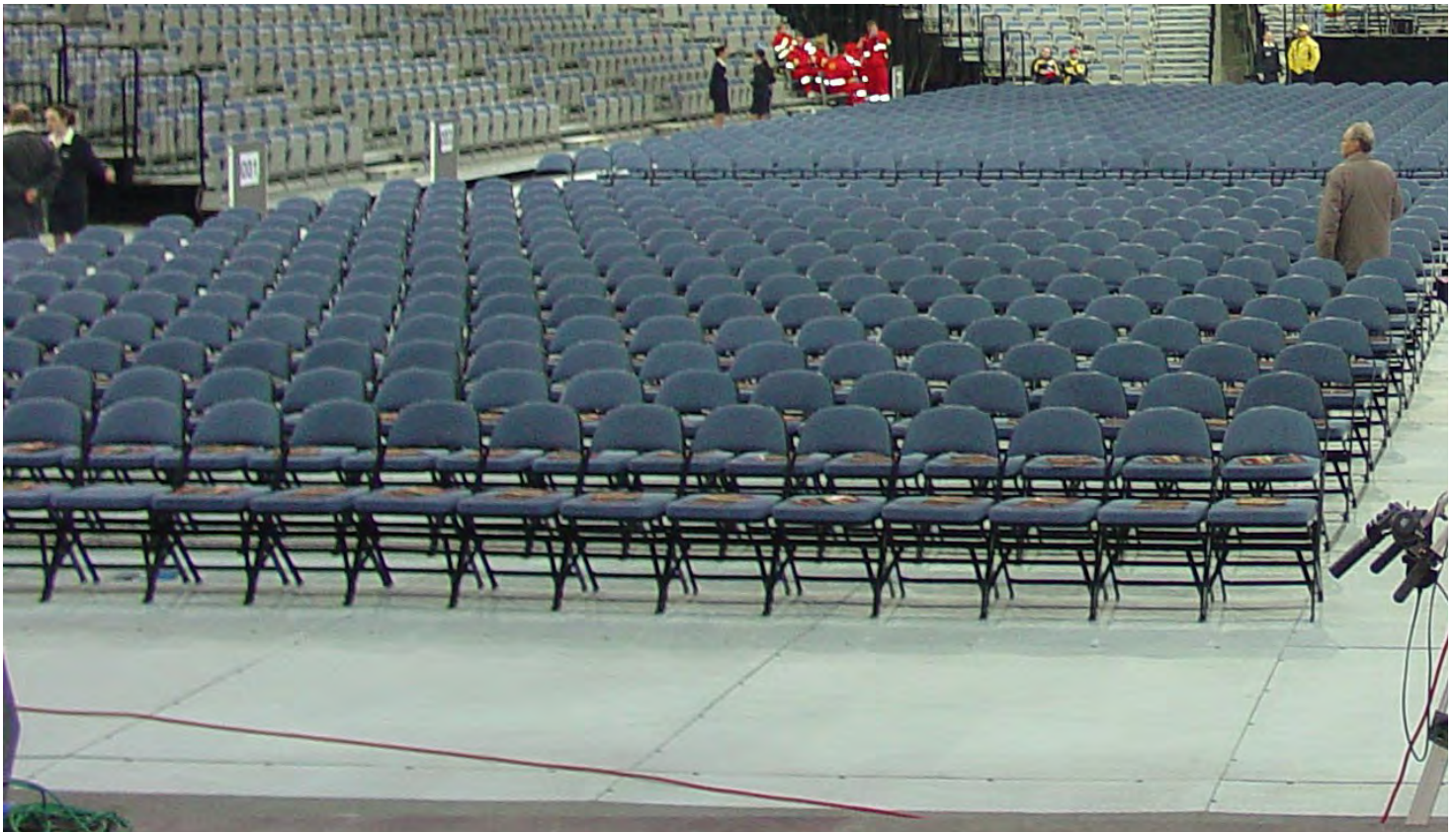
- Durable rubber construction
- Fibers scrape debris, while drainage holes remove moisture
- Suitable for use in extreme weather
- Overall thickness: 1/2"



WEIGHT ROOM MAT

Model # 045

- Heavy-duty natural rubber mat designed to handle heavy equipment
- Designed to take impact of free weights while protecting the floor
- Extra tough in order not to buckle or curl under the extreme weight
- Textured top surface provides traction





CHECKERS™

620 Compton St
Broomfield, CO 80020

PHONE: (800) 438-9336

FAX: (720) 890-4858

EMAIL: sales@checkers-safety.com

www.checkers-safety.com

Ver: 11/18
MKTS070425



A PRODUCT OF:



Justrite Safety Group is the leading source of safety equipment for flammables and hazardous materials storage and handling, asset protection, environmental protection spill containment, absorbents, specialized chemical storage, cable management, safety showers and eye/face washes, matting, and vehicle safety equipment. Learn more at Justrite.com, Checkers-safety.com, and Notrax.com.