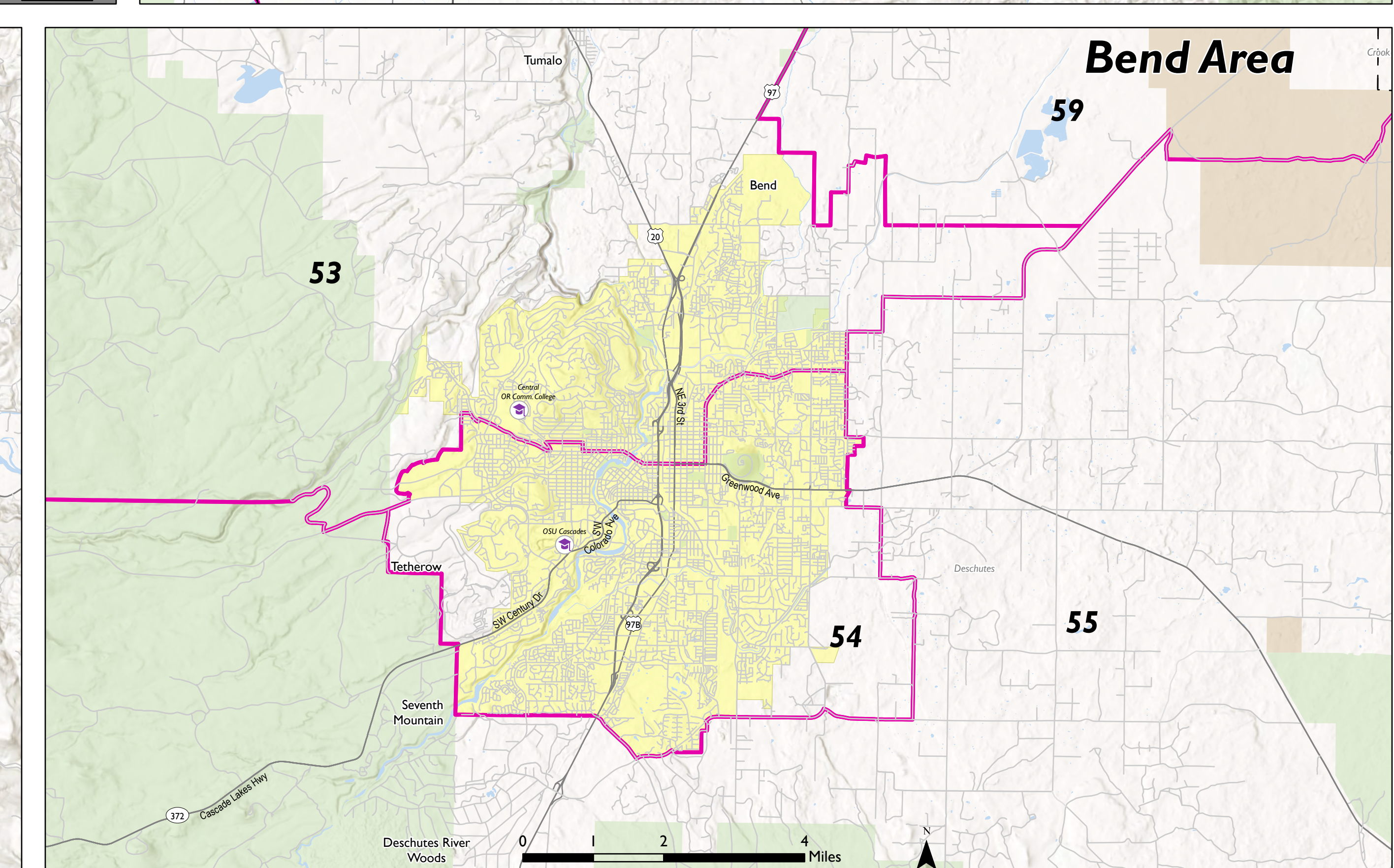
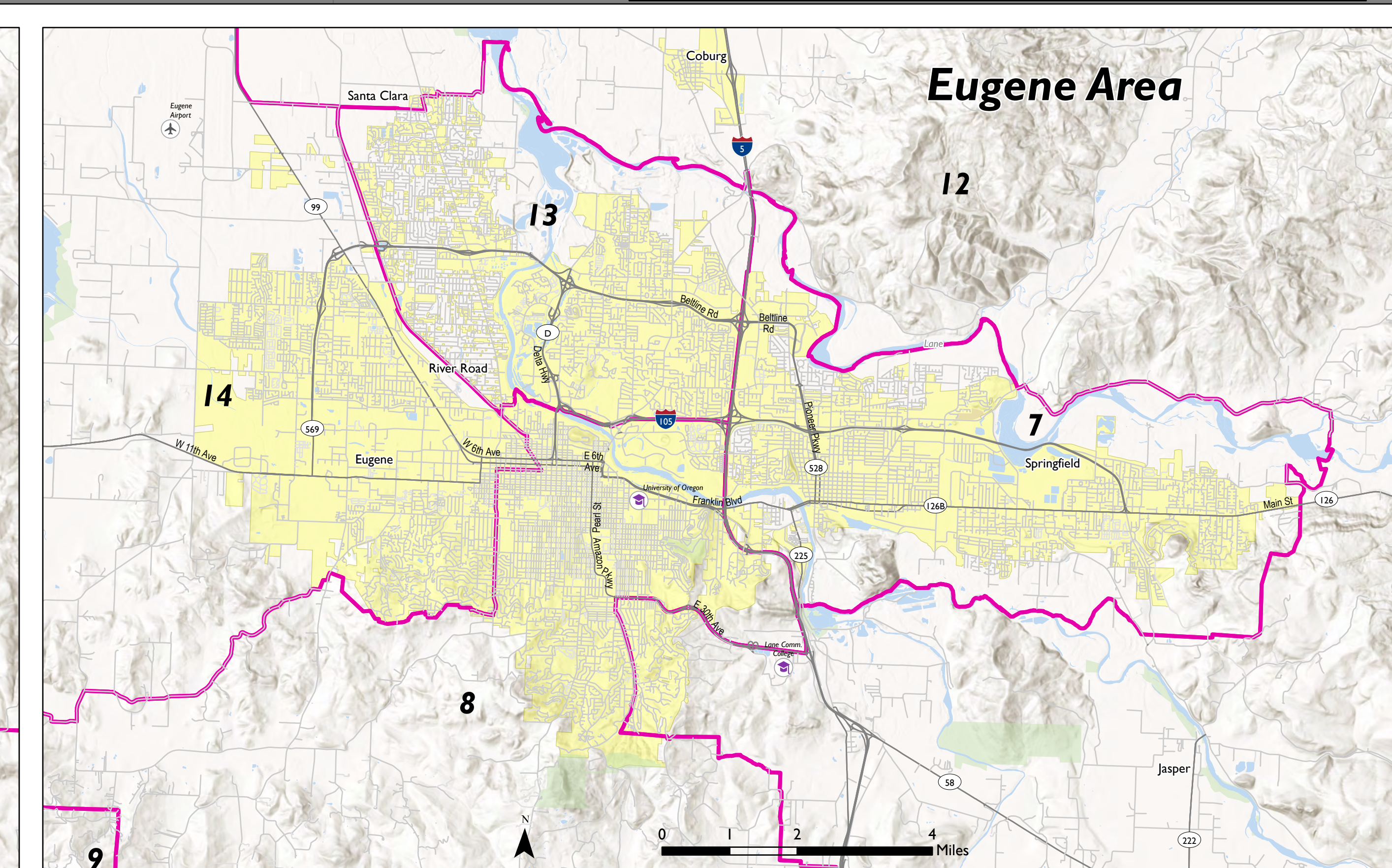
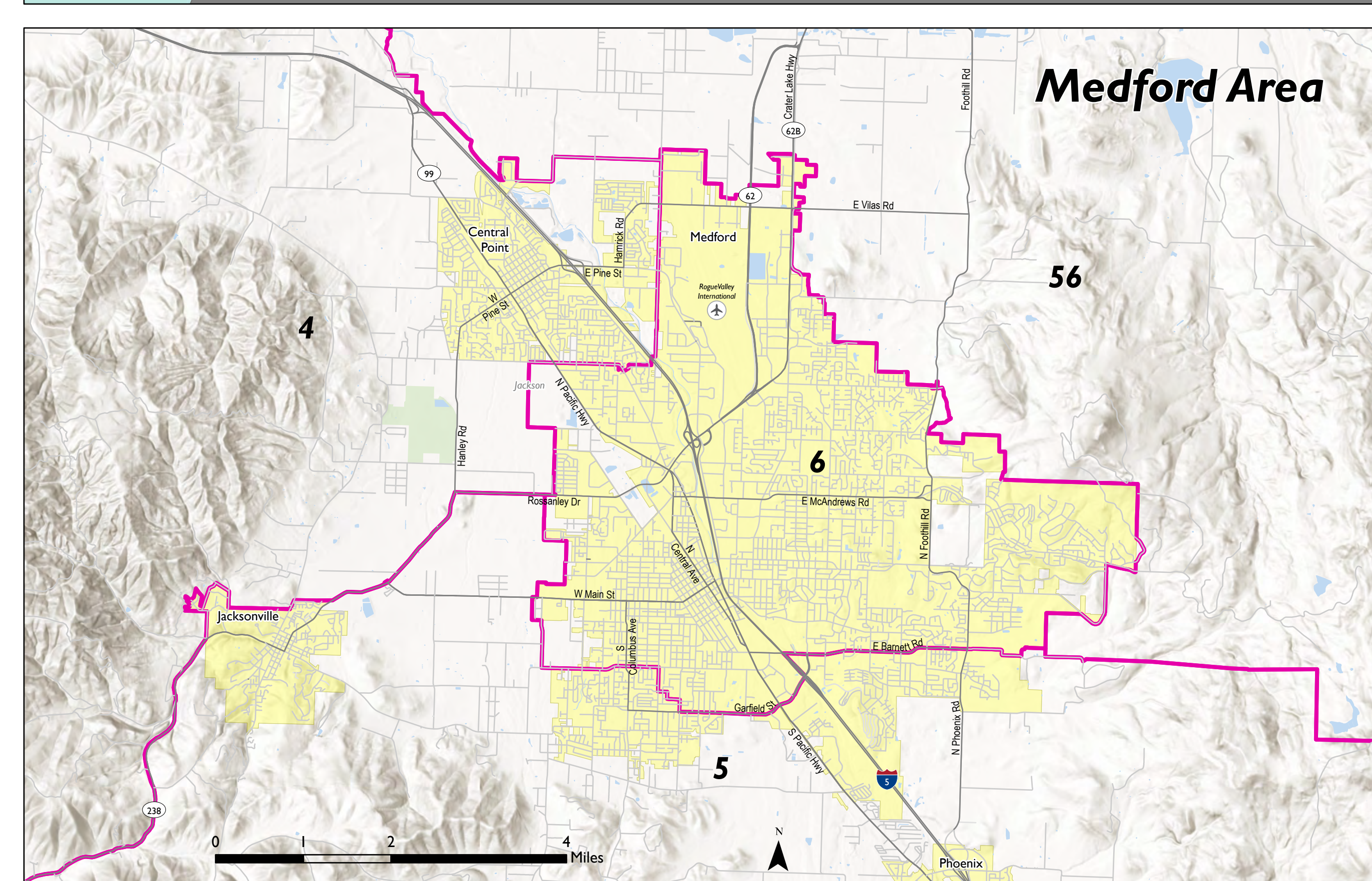
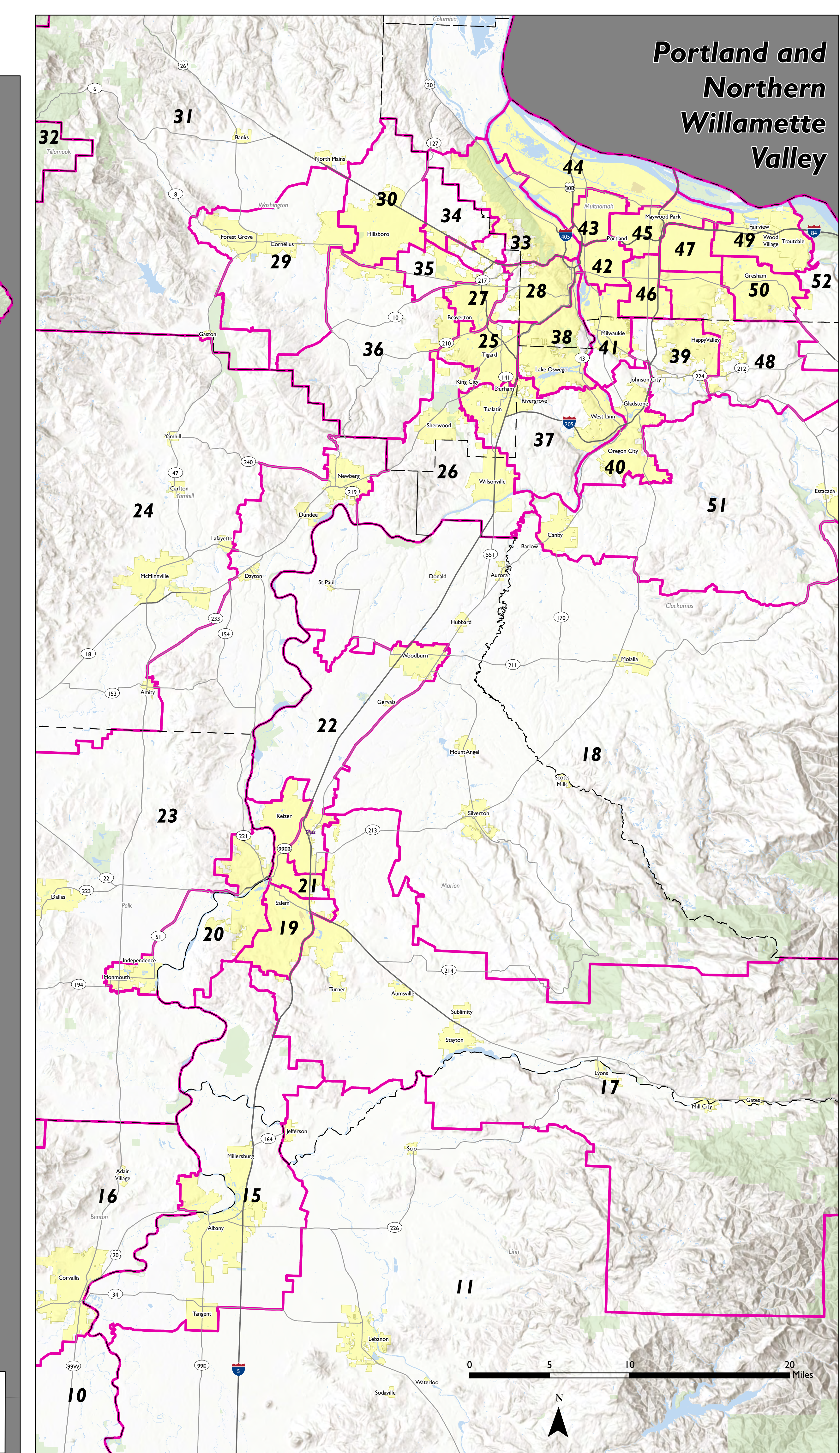
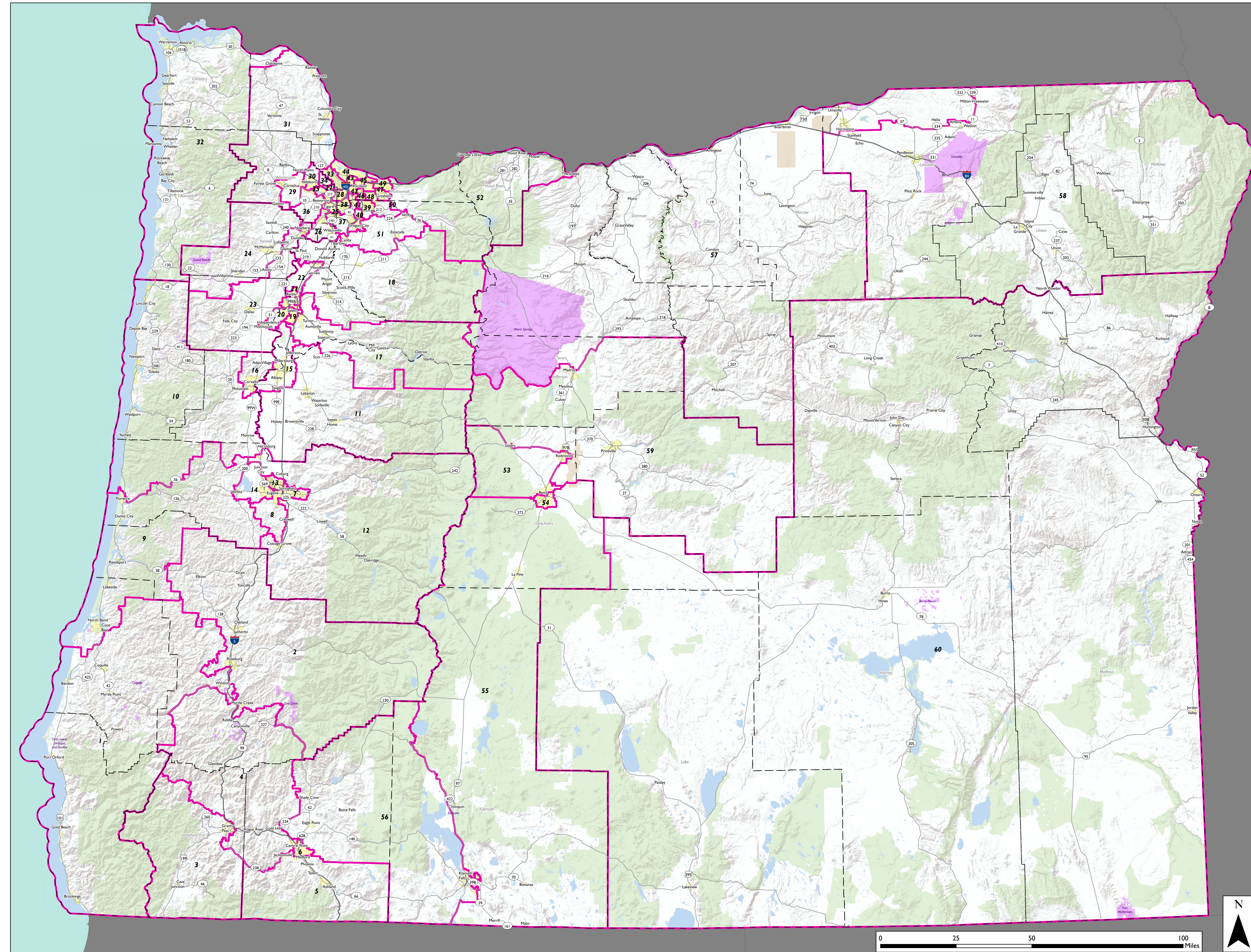


Adopted Oregon House Map (SB 882)



■ House (SB 882)
 Counties
 Other States and Districts
 Incorporated Cities
 Tribal Lands
 Forests, Parks, Wilderness, and Similar
 Military
 Water Bodies
 Highways and Major Roads
 Other Roads and Streets

Districts from SB 882 (2021); States, Counties, Cities, Tribal Lands, Military, and Roads from Census 2020; Forests and similar, and Water Bodies, from BLM, Census 2020, FWS, ODF, Open Street Map, USDA; Hillshading from ESRI; minor feature modifications for cartographic purposes by LPRO. Map created by LPRO, November 2021.