



**REGIONAL SPECIALISED METEOROLOGICAL CENTRE-TROPICAL CYCLONES, NEW DELHI
SPECIAL TROPICAL WEATHER OUTLOOK**

DEMS-RSMC SPECIAL TROPICAL CYCLONES NEW DELHI DATED 06.06.2023

SPECIAL TROPICAL WEATHER OUTLOOK FOR NORTH INDIAN OCEAN (THE BAY OF BENGAL AND THE ARABIAN SEA) VALID FOR NEXT 120 HOURS ISSUED AT 0500 UTC OF 06.06.2023 BASED ON 0000 UTC OF 06.06.2023.

LOW PRESSURE AREA OVER EASTCENTRAL AND ADJOINING SOUTHEAST ARABIAN SEA CONCENTRATED INTO A DEPRESSION

THE LOW PRESSURE AREA OVER EASTCENTRAL AND ADJOINING SOUTHEAST ARABIAN SEA MOVED NEARLY NORTHWARDS, CONCENTRATED INTO A DEPRESSION OVER THE SAME REGION AND LAY CENTERED AT 0000 UTC OF TODAY, THE 06TH JUNE 2023 NEAR LATITUDE 11.30N AND LONGITUDE 66.00E ABOUT 920 KM WEST-SOUTHWEST OF GOA (43194), ABOUT 1120 KM SOUTH-SOUTHWEST OF MUMBAI (43057), ABOUT 1160 KM SOUTH OF PORBANDER (42830) AND ABOUT 1520 KM SOUTH OF KARACHI (41780). IT IS LIKELY TO MOVE NEARLY NORTHWARDS AND INTENSIFY INTO A CYCLONIC STORM OVER EASTCENTRAL & ADJOINING SOUTHEAST ARABIAN SEA DURING NEXT 24 HOURS (BY EVENING OF TODAY, THE 06TH JUNE 2023).

AS PER INSAT 3D IMAGERY, THE CLOUDS HAVE FURTHER ORGANIZED DURING PAST 6 HOURS AND VORTEX PATTERN IS SEEN. INTENSITY OF THE SYSTEM IS T 1.5. ASSOCIATED SCATTERED TO BROKEN LOW AND MEDIUM CLOUDS WITH EMBEDDED INTENSE TO VERY INTENSE CONVECTION LAY OVER SOUTH ADJOINING CENTRAL ARABIAN SEA & LAKHSDWEEP ISLANDS AREA AND WEST OF COMORIN AREA. MINIMUM CLOUD TOP TEMPERATURE IS MINUS 93 DEG C.

FORECAST TRACK AND INTENSITY ARE GIVEN BELOW:

DATE/TIME(IST)	POSITION (LAT. °N/ LONG. °E)	MAXIMUM SUSTAINED SURFACE WIND SPEED (KMPH)	CATEGORY OF CYCLONIC DISTURBANCE
06.06.23/0000	11.3/66.0	45-55 GUSTING TO 65	DEPRESSION
06.06.23/1200	11.6/65.9	55-65 GUSTING TO 75	DEEP DEPRESSION
07.06.23/0000	12.0/65.8	60-70 GUSTING TO 80	CYCLONIC STORM
07.06.23/1200	12.7/65.7	70-80 GUSTING TO 90	CYCLONIC STORM
08.06.23/0000	13.2/65.6	80-90 GUSTING TO 100	CYCLONIC STORM
08.06.23/1200	13.9/65.5	90-100 GUSTING TO 110	SEVERE CYCLONIC STORM
09.06.23/0000	14.4/65.4	95-105 GUSTING TO 115	SEVERE CYCLONIC STORM
09.06.23/1200	15.1/65.3	105-110 GUSTING TO 125	SEVERE CYCLONIC STORM
10.06.23/0000	15.7/65.2	115-125 GUSTING TO 140	SEVERE CYCLONIC STORM
10.06.23/1200	16.4/65.1	115-125 GUSTING TO 140	VERY SEVERE CYCLONIC STORM
11.06.23/0000	17.3/65.0	125-135 GUSTING TO 150	VERY SEVERE CYCLONIC STORM

Cloud distribution: (a) Isolated: <25%, Scattered:25-50%, Broken: 51-75%, Solid:>75%, Convection Intensity: (a) Weak: Cloud Top Temperature (CTT) >-25°C, (b) Moderate: CTT: - 25°C to -40°C, (c) Intense: CTT: - 41°C to -70°C and (d) Very Intense: : Less than -70°C
PROBABILITY OF CYCLOGENESIS (FORMATION OF DEPRESSION): NIL: 0%, LOW: 1-33%, , MODERATE: 34-66% AND HIGH: 67-100%
This is a guidance Bulletin for WMO/ESCAP Panel Member countries. Visit respective National websites for Country specific Bulletins

ASSOCIATED MAXIMUM SUSTAINED WIND SPEED IS 25 KNOTS. THE ESTIMATED CENTRAL PRESSURE IS 960 HPA. SEA CONDITION IS LIKELY TO BE ROUGH TO VERY ROUGH OVER EASTCENTRAL & ADJOINING SOUTHEAST ARABIAN SEA AND LAKSHADWEEP AREA.

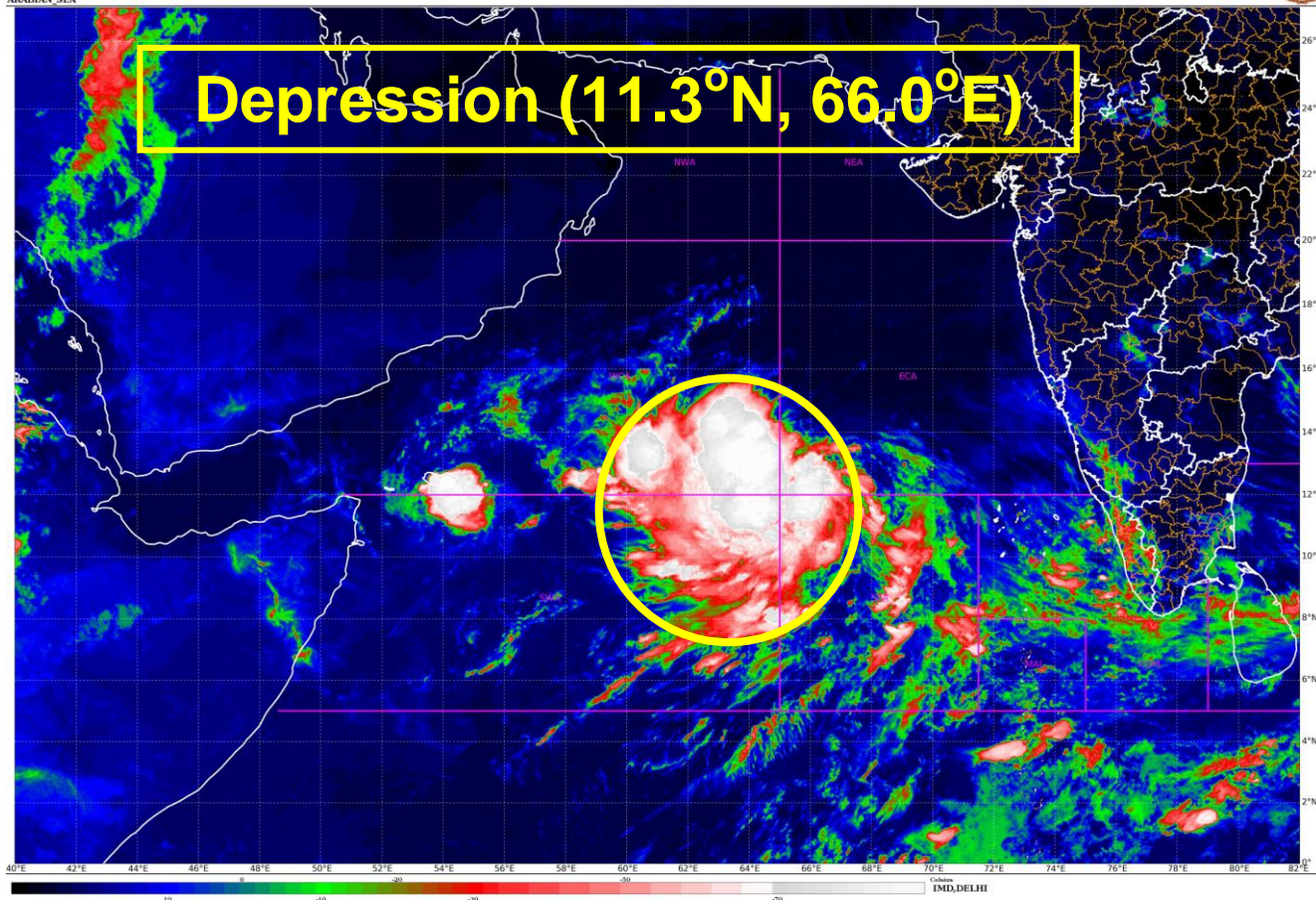
AT 0000 UTC, A BUOY(23452) NEAR 12.01°N/68.24°E REPORTED MAXIMUM SUSTAINED WINDS OF 320°/9.7 KNOTS.

REMARKS: SEA SURFACE TEMPERATURE IS AROUND 30-32°C OVER SOUTH & ADJOINING CENTRAL ARABIAN SEA. THE LOW PRESSURE AREA IS CURRENTLY IN A VERY FAVOURABLE ENVIROMENT WITH POSITIVE LOW LEVEL VORTICITY ($150 \times 10^{-6} \text{S}^{-1}$) TO THE SOUTH OF SYSTEM CENTRE, POSITIVE CONVERGENCE OF ABOUT $30 \times 10^{-5} \text{S}^{-1}$ TO THE SOUTH OF SYSTEM CENTRE, HIGH POSITIVE UPPER LEVEL DIVERGENCE OF ABOUT $30 \times 10^{-5} \text{S}^{-1}$ TO THE SOUTHWEST OF SYSTEM CENTRE. WIND SHEAR IS MODERATE OVER SYSTEM AREA (10-15 KNOTS). FROM 6TH JUNE ONWARDS, MJO WOULD MOVE TO PHASE 2 WITH AMPLITUDE CLOSE TO 1 AND EQUATORIAL ROSSBY WAVES, KELWIN WAVES ALONGWITH WESTERLY WINDS (5-7 MPS) ARE LIKELY TO PREVAIL OVER SOUTH AND CENTRAL AS.

MOST OF THE MODELS SUCH AS ECMWF, IMDGFS, NCEP, NCMRWF ARE INDICATING FURTHER INTESIFICATION OF THE SYSTEM INTO A CYCLONIC STORM DURING NEXT 24 HOURS AND NEARLY NORTHWARDS MOVEMENT DURING NEXT 5 DAYS.

CONSIDERING THE LATEST ENVIRONMENTAL FEATURES AND MODEL GUIDANCE, THERE IS HIGH PROBABILITY OF CYCLONIC STORM DURING NEXT 24 HOURS.

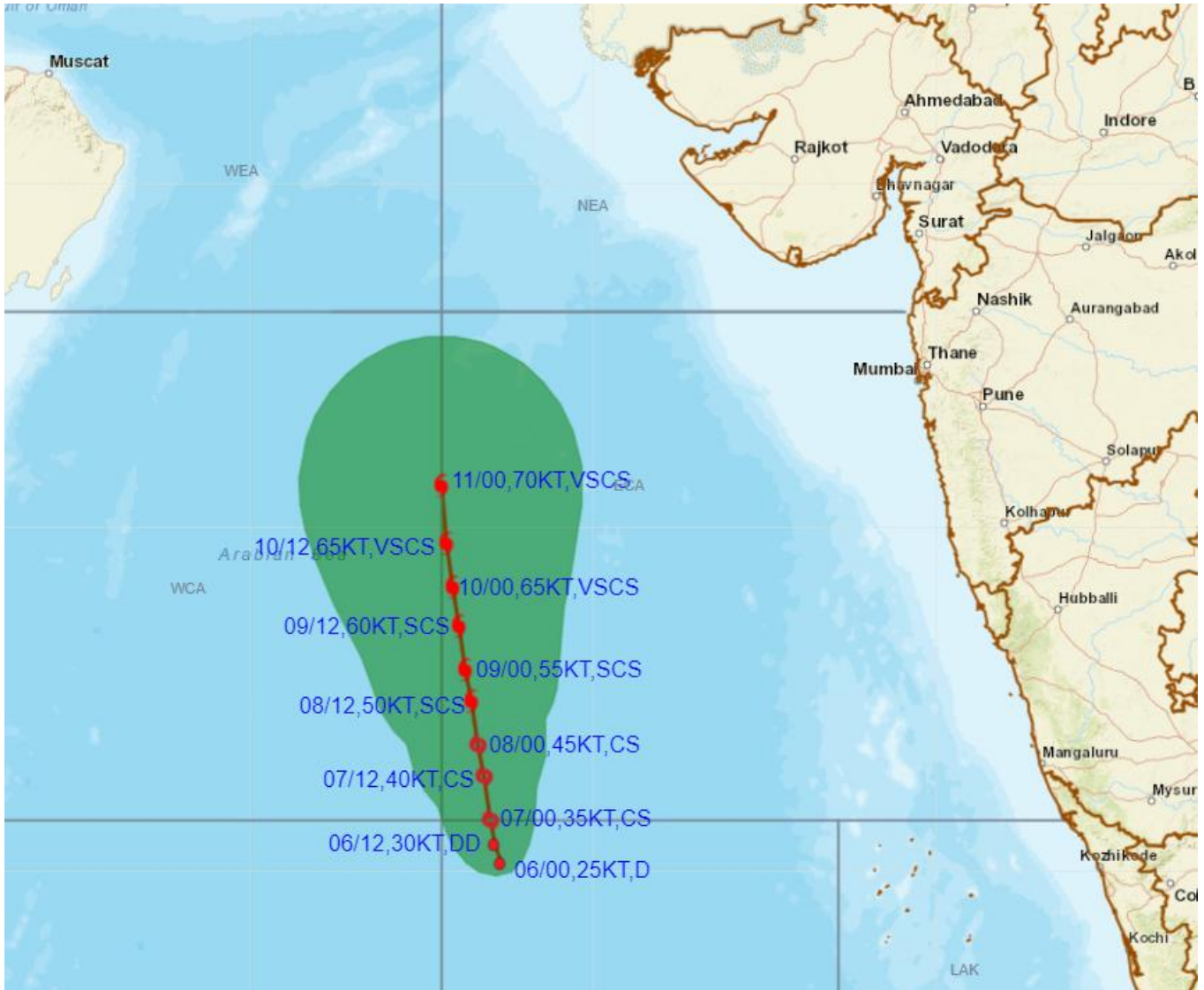
**ARULALAN T
SCIENTIST-C
RSMC NEW DELHI**



Cloud distribution: (a) Isolated: <25%, Scattered:25-50%, Broken: 51-75%, Solid:>75%, Convection Intensity: (a) Weak: Cloud Top Temperature (CTT) >-25°C, (b) Moderate: CTT: - 25°C to -40°C, (c) Intense: CTT: - 41°C to -70°C and (d) Very Intense: : Less than -70°C
PROBABILITY OF CYCLOGENESIS (FORMATION OF DEPRESSION): NIL: 0%, LOW: 1-33%, , MODERATE: 34-66% AND HIGH: 67-100%
This is a guidance Bulletin for WMO/ESCAP Panel Member countries. Visit respective National websites for Country specific Bulletins



OBSERVED AND FORECAST TRACK ALONGWITH CONE OF UNCERTAINTY OF DEPRESSION OVER SOUTHEAST ARABIAN SEA BASED ON 0000 UTC (0530 IST) OF 06TH JUNE 2023.



DATE/TIME IN UTC
 IST=UTC + 0530
 L: LOW PRESSURE AREA
 WML: WELL MARKED LOW PRESSURE AREA
 D: DEPRESSION (17-27 KT)
 DD: DEEP DEPRESSION (28-33 KT)
 CS: CYCLONIC STORM (34-47 KT)
 SCS: SEVERE CYCLONIC STORM (48-63KT)
 VSCS: VERY SEVERE CYCLONIC STORM (64-89 KT)
 ESCS: EXTREMELY SEVERE CYCLONIC STORM (90-119 KT)
 SuCS: SUPER CYCLONIC STORM (≥ 120 KT)

- LESS THAN 34 KT
- 34-47 KT
- ≥ 48 KT
- OBSERVED TRACK
- FORECAST TRACK
- CONE OF UNCERTAINTY

Cloud distribution: (a) Isolated: <25%, Scattered:25-50%, Broken: 51-75%, Solid:>75%, Convection Intensity: (a) Weak: Cloud Top Temperature (CTT) >-25°C, (b) Moderate: CTT: - 25°C to -40°C, (c) Intense: CTT: - 41°C to -70°C and (d) Very Intense: : Less than -70°C
 PROBABILITY OF CYCLOGENESIS (FORMATION OF DEPRESSION): NIL: 0%, LOW: 1-33%, MODERATE: 34-66% AND HIGH: 67-100%
 This is a guidance Bulletin for WMO/ESCAP Panel Member countries. Visit respective National websites for Country specific Bulletins