



**REGIONAL SPECIALISED METEOROLOGICAL CENTRE-TROPICAL CYCLONES, NEW DELHI
TROPICAL WEATHER OUTLOOK**

DEMS-RSMC TROPICAL CYCLONES NEW DELHI DATED 01.06.2023

TROPICAL WEATHER OUTLOOK FOR NORTH INDIAN OCEAN (THE BAY OF BENGAL AND THE ARABIAN SEA) VALID FOR NEXT 120 HOURS ISSUED AT 0600 UTC OF 01.06.2023 BASED ON 0300 UTC OF 01.06.2023.

BAY OF BENGAL:

YESTERDAY'S CYCLONIC CIRCULATION OVER NORTH ANDAMAN SEA & ADJOINING SOUTH MYANMAR COAST LAY OVER EASTCENTRAL BAY OF BENGAL OFF MYANMAR COAST AT 0300 UTC OF TODAY, THE 1ST JUNE 2023.

SCATTERED TO BROKEN LOW AND MEDIUM CLOUDS WITH EMBEDDED MODERATE TO INTENSE CONVECTION LAY OVER NORTH & EASTCENTRAL BAY OF BENGAL, ARAKAN COAST, ANDAMAN SEA AND SOUTH BAY OF BENGAL

PROBABILITY OF CYCLOGENESIS (FORMATION OF DEPRESSION) DURING NEXT 120 HRS:

| 24 HOURS | 24-48 HOURS | 48-72 HOURS | 72-96 HOURS | 96-120 HOURS |
|----------|-------------|-------------|-------------|--------------|
| NIL | NIL | NIL | NIL | NIL |

ARABIAN SEA:

A CYCLONIC CIRCULATION IS LIKELY TO DEVELOP OVER SOUTHEAST ARABIAN SEA AROUND 5TH JUNE. UNDER IT'S INFLUENCE, A LOW PRESSURE AREA IS LIKELY TO FORM OVER THE SAME REGION DURING SUBSEQUENT 48 HOURS.

SCATTERED TO BROKEN LOW AND MEDIUM CLOUDS WITH EMBEDDED INTENSE TO VERY INTENSE CONVECTION LAY OVER EASTCENTRAL ARABIAN SEA OFF GOA-KARNATAKA COASTS & SOUTH ARABIAN SEA AND LAKSHADWEEP ISLANDS AREA. SCATTERED LOW AND MEDIUM CLOUDS WITH EMBEDDED MODERATE TO INTENSE CONVECTION LAY OVER REST CENTRAL ARABIAN SEA AND COMORON AREA.

PROBABILITY OF CYCLOGENESIS (FORMATION OF DEPRESSION) DURING NEXT 120 HRS:

| 24 HOURS | 24-48 HOURS | 48-72 HOURS | 72-96 HOURS | 96-120 HOURS |
|----------|-------------|-------------|-------------|--------------|
| NIL | NIL | NIL | NIL | NIL |

Remarks NIL

CURRENTLY, OVER THE BAY OF BENGAL, ECMWF AND NCUM ARE INDICATING DEVELOPMENT OF A DEPRESSION OVER EASTCENTRAL & ADJOINING NORTH ANDAMAN SEA DURING 6TH-7TH JUNE WITH NORTH-NORTHEASTWARDS TOWARDS MYANMAR COAST. THE GFS GROUP OF MODELS IS NOT INDICATING ANY SYSTEM OVER BAY OF BENGAL.

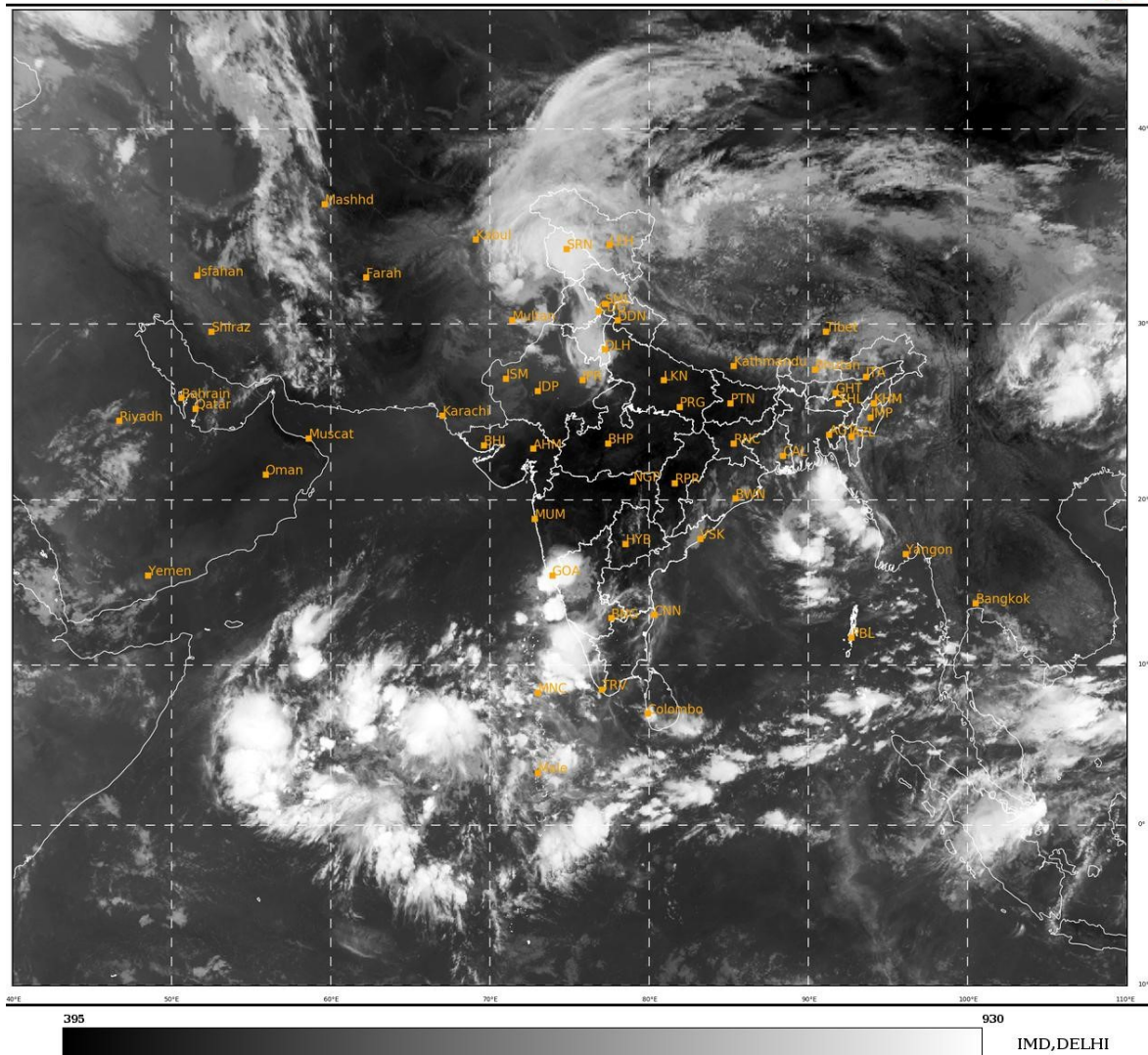
CONSIDERING GUIDANCE FROM VARIOUS MODELS, PROBABILITY OF CYCLOGENESIS IS KEPT AS NIL FOR NEXT FIVE DAYS.

REGARDING ARABIAN SEA, MODELS LIKE ECMWF, NCUM, NCEP GFS & IMD GFS ARE INDICATING DEVELOPMENT OF DEPRESSION DURING 6TH-8TH JUNE. HOWEVER, THERE IS LARGE VARIATION AMONG VARIOUS MODELS WRT AREA OF GENESIS. CONSIDERING GUIDANCE FROM VARIOUS MODELS, PROBABILITY OF CYCLOGENESIS IS KEPT AS NIL FOR NEXT FIVE DAYS.

BOTH THE BASINS ARE UNDER CONTINUOUS WATCH. NEXT UPDATE WILL BE ISSUED AT 0600 UTC OF 2ND JUNE.

SAT : INSAT-3D IMG
 IMG_TIR1 10.8 um
 L1C Mercator

01-06-2023/(0300 to 0326) GMT
 01-06-2023/(0830 to 0856) IST



Cloud distribution: (a) Isolated: <25%, Scattered:25-50%, Broken: 51-75%, Solid:>75%, Convection Intensity: (a) Weak: Cloud Top Temperature (CTT) >-25°C, (b) Moderate: CTT: - 25°C to -40°C, (c) Intense: CTT: - 41°C to -70°C and (d) Very Intense: : Less than -70°C
 PROBABILITY OF CYCLOGENESIS (FORMATION OF DEPRESSION): NIL: 0%, LOW: 1-33%, , MODERATE: 34-66% AND HIGH: 67-100%
 This is a guidance Bulletin for WMO/ESCAP Panel Member countries. Visit respective National websites for Country specific Bulletins