

BABY BURP PAD

TUTORIAL



(Permission granted by Linda Vaias)

You will need:

Cloth diaper - Gerber or better
Flannel or other colored children's fabric
Optional: trim
Embroidery design

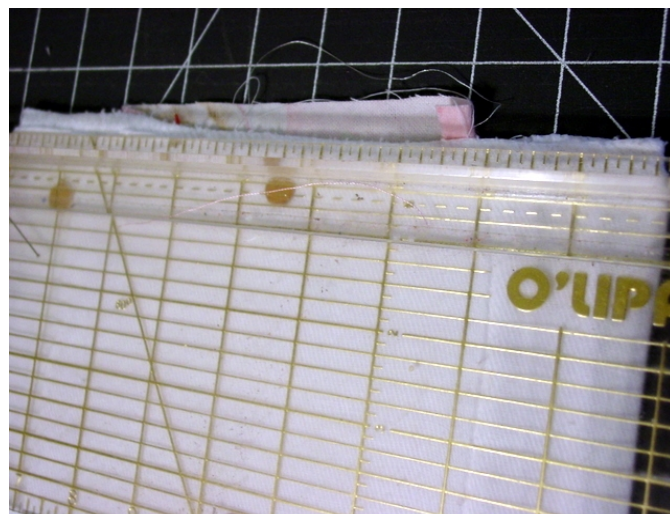
1. Prewash and iron the diaper. I use LOTS of spray sizing.
2. Embroider design in center of diaper - I usually have the center of the design about 5.5 inches from the bottom of the diaper.
3. CUT: 1 strip of colored fabric 6 inches wide
1 strip of colored fabric 3.5 or 4 inches wide
4. Cut a piece from the 6" wide fabric the length of the diaper. I cut a 19" strip.
5. Take this 19" x 6" wide strip of fabric and place it RST against the diaper and sew a ½ " seam.



6. Now, with RST, sew the other side of the 6" strip to the other side of the diaper.
7. Turn the burp right side out. (Photo shows back of burp after turned right side out.)



8. Now, iron thoroughly and straighten top and bottom edge with rotary cutter.



9. Draw a line with a fabric marker 2" up from bottom of burp.



10. Place an 11" piece of the 6" wide strip of colored fabric RST slightly above the line marked and stitch the fabric to the burp.



11. Now, turn the fabric to the back of the burp, folding under $\frac{1}{2}$ ' or so along the edge.



12. Iron the band, pressing firmly.
13. Now, take the folded and pressed edge and fold it over to the front, so that the band will be facing RST.



14. Stitch close to the edge of the band and then trim seam.



15. Now turn the band right side out.



16. Slip stitch in place or top stitch by machine. I much prefer to slip stitch. It's much neater and it really is only a very short hem.



17. Now, for the other side, I basically repeat the process. I don't mark the fabric, though. I just place the border RST against the burp edge and sew a 3/4" seam.



18. Turn the border fabric over to the backside of the burp, folding under the edge as shown:



19. Fold it back all the way, iron, stitch close to the edge as before, trim seams, and turn border side out.
20. Finish by slip stitching, ironing.
21. Trim can be added at the beginning of this process or at the end.

E N J O Y!

Let me know if you have any questions: mtocknell@ameritech.net