



*UMBC Community Specific  
Stormwater Information And  
Spill Response*

# Illicit Discharge

# Illicit Discharge

An illicit discharge is the improper disposal of materials into the stormwater management system, examples include but are not limited to:

- Concrete washout into storm drain
- Trash or yard waste into storm drain
- New or used motor oil or grease into storm drain
- Soap from washing cars/equipment into storm drain
- Unmanaged animal waste or sanitary pipes into storm drain



**University employees, students, contractors and visitors are not to discharge any contaminants into the stormwater system.**

# Illicit Discharge and Spill Hotline (Available 24/7)

Contact the University Police at 410-455-5555 to report all spills and suspected discharges. Information of **where**, **when** and **what** you witnessed will be helpful in tracking the illicit discharge and minimizing the effects.



# Spill Response

# Spill Response Procedures

1. Assess the situation, ensure it is safe to conduct cleanup procedures
2. Ask a team member for help if needed
  - a. Contact ESH at 5-2918 if more assistance is needed
3. Acquire supplies and form a plan
  - a. Spill supplies can be found in a nearby Spill Kit Shed
  - b. Don appropriate PPE such as gloves and eye/face protection
  - c. Close off the area
4. Activate plan
  - a. Stop spill at the source and contain already spilled material if safe to do so
  - b. Cleanup spill using absorbent materials
  - c. Place contaminated absorbent materials and equipment in a trash bag
5. Always report
  - a. Contact ESH at 5-2918 to report incident

# 1. Assess the Situation

- Look for other hazards that may be present at or around the spill such as moving vehicles, dangerous vapors, or ignition sources.
- Understand the material spilled, its properties, and how it reacts in the environment. This information as well as recommended clean up procedures can be found on a chemical's Safety Data Sheet (SDS)
- Determine how/why the spill came about if possible. This will give you an idea as to the best way to stop the spill.



## 2. Ask a Team Member For Help

- Notify nearby team members of the spill and request help if you need it
- Never cleanup a spill by yourself without first notifying another team member
- If a spill is large, involves complex chemicals, or more spill supplies are required contact Environmental Safety and Health (410) 455-2918





## 3. Acquire Supplies and Form a Plan

- Look for a nearby Spill Shed that is stocked with equipment.
  - If more equipment is required Contact Environmental Safety and Health (410) 455-2918
- Form a safe plan that includes closing off the spill area, stopping the spill at its source, cleanup of spilled area, and disposal of contaminated equipment.
- Remember to always wear PPE!



# Spill Shed Locations And Equipment



Spill response supplies

Spill pads

Clay absorbent

Broom/Shovel

Spill socks

Chemical absorbent

Gloves

Safety glasses

Storm drain cover

(May contain other items)

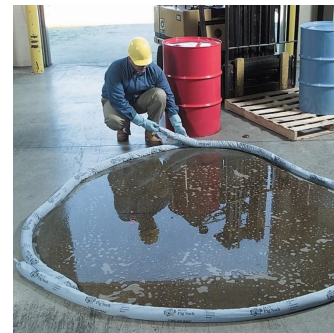
## 4. Activate Plan

If it is safe to do so, initiate spill cleanup

- Stop the spill at its source
- Attempt to contain what has already been spilled
- Look for nearest storm drain or low lying area that the spill may migrate to.
  - Use a storm drain cover, rubber or absorbent boom, or absorbent diking material to prevent the spill from entering the Stormwater Management System or other sensitive areas.



Remember to place contaminated absorbent materials and equipment in a designated trash bag.



# Basic Methods For Spill Cleanup



Oil absorbent with broom



Absorbent pad with socks/booms



Chemical absorbent with socks

## 5. Always Report

Please report incident to the Office of Environmental Safety and Health by phone (410) 455-2918 or by email at [esh@umbc.edu](mailto:esh@umbc.edu) . Information of **who**, **what**, **when**, and **where** will be helpful for follow up activities.



# UMBC & The Environment

# What You Can Do to Help Stormwater Quality

1. Never dump anything into storm drains, clean up all spills.
  2. Pick up after your pets.
  3. Do not litter. Dispose of trash in proper receptacles.
  4. Ensure vehicles are maintained to limit fluid leaks.
  5. Alert Campus police if spills or dumping into the stormwater system is witnessed.
  6. Participate in campus events that promote environmental stewardship and education, including stream cleanups, tree plantings, forest conservation, and similar campus initiatives.
- Visit [sustainability.umbc.edu](https://sustainability.umbc.edu) for more information.

