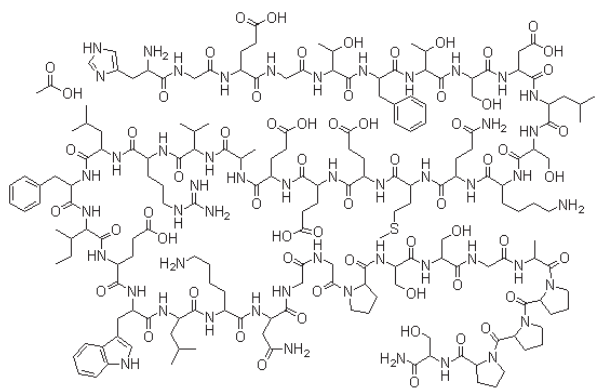


Bioanalytical Quantitation Redefined Using the SCIEX QTRAP® 6500+ LC-MS/MS System



LC-MS/MS Method for the Quantification of Exenatide in Human Plasma, Using the SCIEX QTRAP® 6500+ System

A highly selective, sensitive and reproducible bioanalytical method was developed for the detection of Exenatide with an LLOQ of 25 pg/mL in human plasma using the SCIEX QTRAP® 6500+ LC-MS/MS System. A key highlight of this method is that the required plasma sample volume is 400 µL, which is lower than most other methods, and the final reconstitution volume of 100 µL makes this method amenable for re-injection of samples or repeat analysis chromatography if required in a GLP laboratory.



His-Gly-Glu-Gly-Thr-Phe-Thr-Ser-Asp-Leu-Ser-Lys-Gln-Met-Glu-Glu-Glu-Ala-Val-Arg-Leu-Phe-Ile-Glu-Trp-Leu-Lys-Asn-Gly-Gly-Pro-Ser-Ser-Gly-Ala-Pro-Pro-Ser-NH₂

Figure 1. Exenatide Structure.

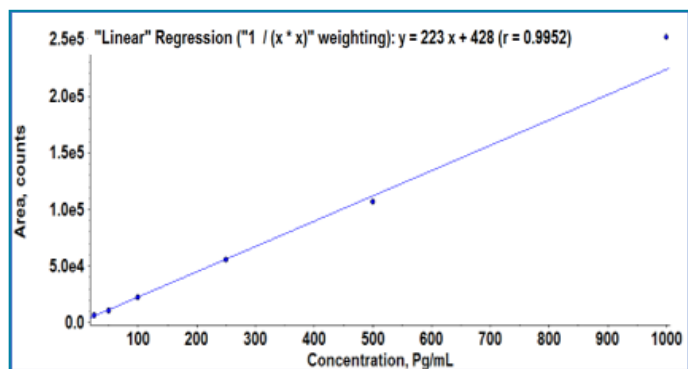


Figure 2. Linearity Plot for Exenatide method.

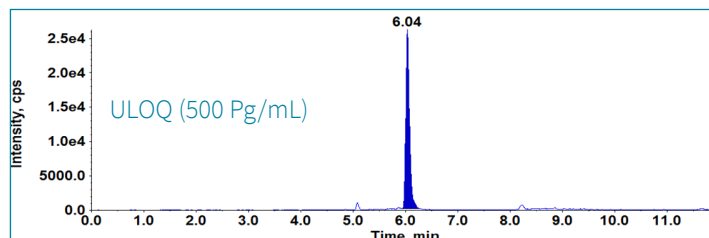
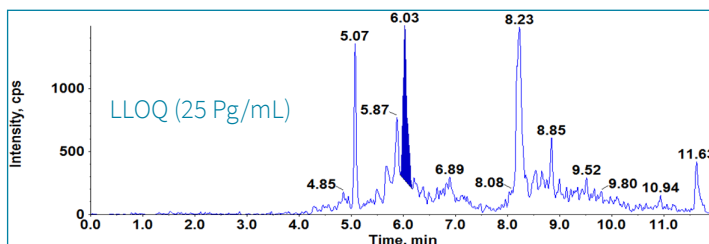
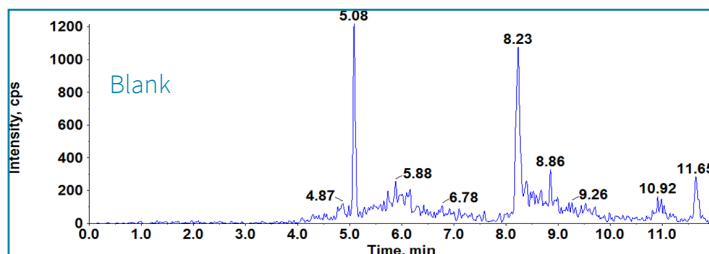


Figure 3. Chromatograms of blank plasma, and calibration curve samples from the Exenatide method.

To learn more about this method please email: Marketing.India@sciex.com

The SCIEX clinical diagnostic portfolio is For In Vitro Diagnostic Use. Rx Only. Product(s) not available in all countries. For information on availability, please contact your local sales representative or refer to <https://sciex.com/diagnostics>. All other products are For Research Use Only. Not for use in Diagnostic Procedures. © 2019 DH Tech. Dev. Pte. Ltd.

RUO-MKT-07-10304-A

