

Serveur Académique Lausannois SERVAL serval.unil.ch

Author Manuscript

Faculty of Biology and Medicine Publication

This paper has been peer-reviewed but does not include the final publisher proof-corrections or journal pagination.

Published in final edited form as:

Title: Phytochrome interacting factors 4 and 5 control seedling growth in changing light conditions by directly controlling auxin signaling.

Authors: Hornitschek P, Kohnen MV, Lorrain S, Rougemont J, Ljung K, López-Vidriero I, Franco-Zorrilla JM, Solano R, Trevisan M, Pradervand S, Xenarios I, Fankhauser C

Journal: The Plant journal : for cell and molecular biology

Year: 2012 Sep

Volume: 71

Issue: 5

Pages: 699-711

DOI: 10.1111/j.1365-313X.2012.05033.x

In the absence of a copyright statement, users should assume that standard copyright protection applies, unless the article contains an explicit statement to the contrary. In case of doubt, contact the journal publisher to verify the copyright status of an article.

1
2
3 **Phytochrome interacting factors 4 and 5 control seedling growth in**
4 **changing light conditions by directly controlling auxin signaling.**
5
6
7

8
9
10 Patricia Hornitschek^{1,7}, Markus V. Kohnen^{1,7}, Séverine Lorrain^{1,7}, Jacques
11 Rougemont², Karin Ljung³, Irene López-Vidriero⁴, José Manuel Franco-Zorrilla⁴,
12 Roberto Solano⁴, Martine Trevisan¹, Sylvain Pradervand^{5, 6}, Ioannis Xenarios⁵
13 and Christian Fankhauser^{1,8}
14
15
16
17
18
19

20
21 ¹ Center for Integrative Genomics, Faculty of Biology and Medicine, University of
22 Lausanne, CH-1015 Lausanne, Switzerland
23

24
25 ² Bioinformatics and Biostatistics Core Facility, School of Life Sciences, and Swiss
26 Institute of Bioinformatics, EPFL, CH-1015 Lausanne, Switzerland.
27

28
29 ³ Umeå Plant Science Centre, Department of Forest Genetics and Plant Physiology,
30 Swedish University of Agricultural Sciences, SE-901 83 Umeå, Sweden
31
32

33
34 ⁴ Departamento de Genética Molecular de Plantas, Centro Nacional de
35 Biotecnología-Consejo Superior de Investigaciones Científicas, Campus
36 Universidad Autónoma, 28049 Madrid, Spain.
37
38

39
40 ⁵ Vital-IT, Swiss Institute of Bioinformatics, Bâtiment Génopode, 1015 Lausanne,
41 Switzerland.
42
43

44
45 ⁶ Genomic Technologies Facility, Center for Integrative Genomics, Faculty of
46 Biology and Medicine, University of Lausanne, CH-1015 Lausanne, Switzerland
47
48

49
50 ⁷ Authors with equal contribution listed alphabetically.
51

52
53 ⁸ Corresponding author: christian.fankhauser@unil.ch
54
55
56
57
58
59
60

Abstract

Plant growth is strongly influenced by the presence of neighbors competing for light resources. In response to vegetational shading shade-intolerant plants such as *Arabidopsis* display a suite of developmental responses known as the shade avoidance syndrome (SAS). The phytochrome B (phyB) photoreceptor is the major light sensor mediating this adaptive response. The control of the SAS occurs in part with phyB directly controlling protein abundance of Phytochrome Interacting Factors 4 and 5 (PIF4 and PIF5). The shade avoidance response also requires rapid biosynthesis of auxin and its transport to promote elongation growth. The identification of genome-wide PIF5 binding sites during shade avoidance reveals that this bHLH transcription factor regulates the expression of a subset of previously identified SAS genes. Moreover our study suggests that PIF4 and PIF5 regulate elongation growth by directly controlling the expression of genes coding for auxin biosynthesis and auxin signaling components.

Introduction

Many plants are sensitive to shade from the neighboring vegetation and display a developmental response known as the shade-avoidance syndrome (SAS) to adapt to this potentially threatening situation. These responses include elongation of hypocotyls, stems and petioles, elevated leaf angles (hyponasty), reduced leaf blade development and early flowering (Ballare 2009, Franklin 2008, Franklin and Quail 2010, Morelli and Ruberti 2000, Vandenbussche *et al.* 2005). Light filtered through vegetation has a specific spectral signature with a reduction of the red to far-red ratio (R/FR) due to selective absorption of red and blue light but not far-red by photosynthetic pigments. In direct sunlight the R/FR ratio is above 1 while under deep shade it can drop below 0.1 (Ballare 2009, Franklin 2008). Under vegetational shading plants experience reduced Photosynthetically Active Radiation (PAR) and R/FR ratio. Given that about 50% of far-red light is reflected from leaves, plants growing in the proximity of neighbors will also experience a reduction of the R/FR ratio but maintain access to normal PAR (Ballare 1999). Many plants respond to such “neighbor threat” by displaying responses similar to the SAS (Ballare 1999, Keller *et al.* 2011).

The red and far-red sensing phytochromes play a predominant role in the control of the SAS particularly under “neighbor threat” conditions when the low R/FR ratio occurs without PAR reduction. (Ballare 2009, Franklin and Quail 2010, Kami *et al.* 2010). In *Arabidopsis* phyB is the major sensor of low R/FR although phyD and phyE contribute to the response (Franklin and Quail 2010). Phytochromes are synthesized in the inactive red-light absorbing Pr conformer

1
2
3 that is primarily cytosolic. Upon light absorption it converts to the active Pfr
4
5 form (far-red absorption maximum) that accumulates in the nucleus where it
6
7 leads to rapid changes in gene expression (Nagatani 2004, Fankhauser and Chen
8
9 2008, Franklin and Quail 2010, Kami *et al.* 2010). Transfer of plants from sun to
10
11 shade alters the Pfr/Ptot ratio and leads to rapid phytochrome-mediated
12
13 modifications in gene expression (Devlin *et al.* 2003, Salter *et al.* 2003, Sessa *et al.*
14
15 2005, Tao *et al.* 2008). Under direct shading which includes a reduction in blue
16
17 light additional photoreceptors, most notably the cryptochromes contribute to
18
19 the SAS (Keller *et al.* 2011, Keuskamp *et al.* 2011, Sellaro *et al.* 2010, Zhang *et al.*
20
21 2011).
22
23
24
25

26
27
28 Multiple hormones are involved in the establishment of the SAS (Franklin 2008,
29
30 Martinez-Garcia *et al.* 2010, Morelli and Ruberti 2000, Vandenbussche *et al.*
31
32 2005). Both TAA1-dependent auxin biosynthesis and auxin transport are
33
34 essential to induce hypocotyl elongation by a reduction in the R/FR ratio
35
36 (Keuskamp *et al.* 2010, Steindler *et al.* 1999, Tao *et al.* 2008). Moreover,
37
38 gibberellins (GA), brassinosteroids (BR) cytokinins and ethylene also contribute
39
40 to a normal SAS (Pierik *et al.* 2004, Carabelli *et al.* 2007, Djakovic-Petrovic *et al.*
41
42 2007, Keuskamp *et al.* 2011, Kozuka *et al.* 2010, Pierik *et al.* 2004).
43
44
45

46
47
48 PIF4 and PIF5, two members of the Phytochrome Interacting Factor (PIF) family
49
50 of bHLH proteins are good candidates for a direct link between phytochrome
51
52 regulation by shade and gene expression because their protein stability is
53
54 directly controlled by the R/FR ratio (Keller *et al.* 2011, Lorrain *et al.* 2008).
55
56 However the SAS is only partially affected in *pif4pif5* double mutants indicating
57
58
59
60

1
2
3 that additional factors mediate the SAS (Cole *et al.* 2011, Keller *et al.* 2011,
4 Lorrain *et al.* 2008). Additional transcription factors including several target
5 genes of PIF5 have been implicated in the control of SAS (Crocco *et al.* 2010,
6 Hornitschek *et al.* 2009, Roig-Villanova *et al.* 2007, Salter *et al.* 2003, Sessa *et al.*
7 2005, Sorin *et al.* 2009, Steindler *et al.* 1999, Kunihiro *et al.* 2011). Among them
8 HFR1, PIL1 and PAR1 act as negative regulators of the SAS (Roig-Villanova *et al.*
9 2007, Salter *et al.* 2003, Sessa *et al.* 2005). This negative regulation occurs at
10 least in part via the inhibition of PIF4 and PIF5 suggesting the existence of
11 complex regulatory networks controlling SAS including circadian regulation of
12 the process (Salter *et al.* 2003, Sessa *et al.* 2005, Hornitschek *et al.* 2009, Hao *et al.*
13 2012, Sellaro *et al.* 2012).

14
15
16
17
18
19
20
21
22
23
24
25
26
27
28
29
30 This link between auxin that is essential for the response to low R/FR and the
31 transcriptional network described above remains poorly understood. PAR1
32 over-expression inhibits shade-induced expression of auxin response genes
33 (Roig-Villanova *et al.* 2007) while the positive regulator of SAS, ATHB2 controls
34 auxin sensitivity through unknown mechanisms (Steindler *et al.* 1999, Kunihiro
35 *et al.* 2011). Interestingly, PIF4 controls hypocotyl elongation in response to
36 elevated temperature by direct regulation of the *TAA1* auxin biosynthesis gene
37 (Franklin *et al.* 2011). Moreover it was shown that *pif4pif5* mutants display an
38 altered sensitivity to auxin and altered expression of numerous "auxin genes",
39 however whether this is due to direct regulation of auxin signaling genes by
40 those PIFs remains unknown (Nozue *et al.* 2011).
41
42
43
44
45
46
47
48
49
50
51
52
53
54
55
56
57
58
59
60

1
2
3 In order to better understand the mechanisms underlying PIF4 and PIF5-
4 mediated growth responses we combined ChIP followed by sequencing (ChIP-
5 seq) to identify chromatin-binding sites of PIF5 with gene expression studies. We
6 identify a small set of shade-induced genes whose regulation depends on PIF4
7 and PIF5. Both transcription factors bind to promoter sequences of most of these
8 genes indicating that they are likely direct targets of these PIFs. Our study
9 reveals that PIF4 and PIF5 also influence gene expression in high R/FR
10 particularly in low PAR. Finally, our work suggests that PIF4 and PIF5 impact
11 auxin-mediated growth by directly controlling the expression of *YUC* genes that
12 code for enzymes controlling a rate limiting step in auxin biosynthesis and of
13 *IAA/AUX* auxin signaling genes.
14
15
16
17
18
19
20
21
22
23
24
25
26
27
28
29
30
31
32
33
34
35
36
37
38
39
40
41
42
43
44
45
46
47
48
49
50
51
52
53
54
55
56
57
58
59
60

Results

Identifying genome-wide PIF5 binding sites

PIF4 and PIF5 control the SAS and directly regulate the expression of several shade marker genes (Lorrain *et al.* 2008, Hornitschek *et al.* 2009). In order to obtain a global view of the importance of PIF5 during shade avoidance we performed a ChIP experiment followed by Ultra High Throughput sequencing (ChIP-seq) using a PIF5-HA line that was subjected to a 2 hour low R/FR treatment (Lorrain *et al.* 2008). We generated DNA libraries, one for the chromatin (input) and one for the enriched chromatin fragments following immunoprecipitation (IP). 1103 PIF5 binding sites were detected using Model-based Analysis of ChIP-seq (Zhang *et al.* 2008). For further analysis we considered peaks located in proximity of genes defined as follows: from -3000 bp of the transcript to 500 bp downstream of the transcript. This list comprises 962 peaks and identifies 1218 Arabidopsis Genome Initiative loci (supplementary table 1). As an example the reads located on 3 closely spaced G-boxes present 5' of the *PIL1* gene are presented (Figure 1A). We previously showed that these G-boxes are required for PIF5-mediated expression of a *PIL1* reporter in cell cultures (Hornitschek *et al.* 2009). In Arabidopsis seedlings, shade-induced expression of the *PIL1* reporter required these 3 G-boxes (Figure 2). We conclude that PIF5 binding to the G-boxes of the *PIL1* promoter is important for shade-regulated expression of this gene. Moreover, this experiment suggests that genes requiring PIFs for normal expression and possessing a nearby PIF5 binding site are likely direct targets of this transcription factor.

1
2
3 Most genes in our list contained a binding site in promoter regions with a higher
4 frequency towards the transcriptional start site (TSS) and fewer peaks within
5 the transcript or immediately 3' of it (Figure 1B). PIF5 was previously shown to
6 directly bind to the G-box DNA motif (5'-CACGTG-3') (Hornitschek *et al.* 2009).
7 We thus analyzed PIF5 binding peaks, defined as 200 bp centered to the peak
8 summit, for the presence of this sequence and the E-box (5'-CANNTG-3'), a
9 degenerated G-box that is also bound by bHLH transcription factors. Almost all
10 PIF5 peaks contained an E-box (96%) the majority of which being a G-box (55%)
11 (Figure 1C). Using motif-based sequence analysis tools
12 (<http://meme.sdsc.edu/meme/intro.html>) we confirmed that the G-box is highly
13 over-represented in PIF5 peaks. G-boxes were enriched in the center of PIF5
14 peaks suggesting that they mediate DNA binding (Figure 1D).
15
16
17
18
19
20
21
22
23
24
25
26
27
28
29
30
31

32 In order to compare *in vivo* binding sites of PIF5 with its DNA-binding specificity
33 we used protein-binding microarrays (PBM) (Godoy *et al.* 2011). We included
34 PIF4, the closest homologue of PIF5 and HFR1 in our analysis. PIF5 and PIF4
35 showed a strong preference for the G-box which is the sequence that was most
36 enriched in PIF5 peaks determined by CHIP (Figures 1, 3 and S1). In addition,
37 binding of PIF5 to the G-boxes *in vitro* was influenced by the nucleotides
38 immediately 5' and 3' of the G-box while this was not the case for PIF4 (Figure 3).
39 Moreover this experiment demonstrated that HFR1 did not possess sequence-
40 specific DNA binding capacity (Figure 3). Our data does not exclude that HFR1
41 heterodimers with other bHLH factors could bind to DNA. However taken
42 together with recent publications it is most likely that HFR1 works by preventing
43
44
45
46
47
48
49
50
51
52
53
54
55
56
57
58
59
60

1
2
3 other bHLH factors from binding to DNA (Figure 3) (Galstyan *et al.* 2011,
4
5 Hornitschek *et al.* 2009).
6
7

8
9
10 Gene Ontology (GO) enrichment analysis was performed on genes close to PIF5
11
12 peaks in order to identify biological processes that may be regulated by PIF5
13
14 (supplementary table 2). The terms response to light stimulus, response to red
15
16 or far-red light, response to radiation and shade avoidance were enriched.
17
18 Response to hormone stimulus and especially response to auxin stimulus were
19
20 also strongly enriched. Transcription factor activity and interestingly auxin
21
22 responsive SAUR, basic helix-loop-helix and AUX/IAA proteins were also over-
23
24 represented. This first analysis suggested that PIF5 might regulate light
25
26 responses by directly controlling the expression of hormonal pathways, in
27
28 particular auxin.
29
30
31
32

33 34 Shade-regulated gene expression in *pif4pif5*

35
36
37 The wild type, *pif5*, *pif4pif5* and the *PIF5-HA* line used for ChIP-seq were
38
39 subjected to a 2 hour low R/FR treatment or maintained in the high R/FR light to
40
41 determine the importance of PIF4 and PIF5 in shade-regulated gene expression
42
43 using Affymetrix® Arabidopsis ATH1 chip. To identify genes misregulated by the
44
45 treatment in *pif4pif5*, we used a linear model to compute the interaction between
46
47 the genotype (*pif4pif5* vs wild-type) and the treatment (low R/FR vs high R/FR).
48
49 We identified 77 genes with significant interaction (FDR < 5%, Figure 4A),
50
51 meaning that genes in this list showed a significantly different fold-change by the
52
53 treatment in *pif4pif5* than in the wild type (supplementary table 3). The
54
55 expression of these genes is presented as a heatmap that also includes their
56
57
58
59
60

1
2
3 expression in *pif5* and *PIF5-HA* (Figure 4A). Hierarchical clustering of the
4
5 expression of these 77 genes identified 2 major groups and 5 smaller ones (3-7)
6
7 that we will not further discuss here. The expression of the majority of these
8
9 genes was robustly regulated by shade in *pif4pif5*. This was particularly obvious
10
11 for group 1 representing the largest set of genes. Genes belonging to group 1
12
13 presented similar expression level in low R/FR in the wild type and in *pif4pif5*.
14
15 They are present in this list because their expression was reduced in high R/FR
16
17 grown *pif4pif5* leading to greater shade induction. In contrast genes belonging to
18
19 group 2 showed reduced induction by low R/FR in *pif4pif5*. This small group
20
21 contains genes previously identified as dependent on PIF4 and PIF5 for
22
23 regulation such as *HFR1* and *ATHB2* (Figure 4) (Lorrain *et al.* 2008). Considering
24
25 previously published data *PIL1*, that is not included in the ATH1 chip, would also
26
27 be part of this group (Hornitschek *et al.* 2009, Lorrain *et al.* 2008). Genes
28
29 identified in this category include *PIL2*, *CKX5* and *FHL*. GO enrichment analysis
30
31 was performed in order to identify biological processes that may be
32
33 misregulated in *pif4pif5* during the response to low R/FR (supplementary table
34
35 2). Interestingly several GO terms identified among genes close to PIF5 peaks
36
37 were also found in this list. In particular the most over-represented term was
38
39 response to auxin stimulus and AUX/IAA proteins was also over-represented in
40
41 the list of genes with a misregulated expression by shade in *pif4pif5*. This
42
43 analysis provided further support for a role of these PIFs in auxin-mediated
44
45 growth responses.
46
47
48
49
50
51

52
53
54
55 Direct target genes likely show altered expression in the mutant and binding of
56
57 the transcription factor to their promoter (e.g. *PIL1*) (Figures 1 and 2)
58
59
60

1
2
3 (Hornitschek *et al.* 2009). We thus compared the list of genes of the interaction
4 list with genes that have a PIF5 binding site in their promoter (supplementary
5 tables 1 and 3). We found that 39% of the genes of the interaction present a PIF5
6 binding peak in their vicinity. Interestingly these putative direct target genes are
7 not evenly distributed in the different groups. Especially 8 out of the 9 genes of
8 group 2 (including *PIL1*) show a PIF5 binding site in their promoter. This data
9 suggests that most genes that are not properly upregulated by shade in *pif4pif5*
10 (group 2) are direct targets of this transcription factors (Figure 4).
11
12
13
14
15
16
17
18
19
20
21
22

23 To confirm these genome-wide data we conducted additional gene expression
24 and ChIP analysis on selected genes (Figure 4C and D). We present data for
25 representatives of groups 1 and 2 of the interaction list, which contained a PIF5
26 binding peak determined by ChIP-seq. This experiment confirmed that genes of
27 group 2 (*CKX5* and *FHL*) were primarily misexpressed in response to a low R/FR
28 treatment in *pif4pif5*. In contrast genes belonging to group 1 (*YUC8* and *IAA29*)
29 showed a slightly reduced expression in *pif4pif5* exposed to low R/FR but had
30 strongly reduced expression in high R/FR (Figure 4C). Moreover by analyzing
31 the expression of these genes in *pif4* and *pif5* single mutants we noticed that PIF5
32 played a predominant function in the expression of group 2 genes in low R/FR,
33 while the expression of group 1 genes was reduced both in *pif4* and *pif5* grown in
34 high R/FR (Figure 4C). ChIP experiments were conducted with the *PIF5-HA* line
35 and seedlings expressing *PIF4-citrine-HA* under the control of the *PIF4* promoter
36 (hereafter referred to as *PIF4-HA*). Using chromatin from seedlings exposed to a
37 2 hour low R/FR treatment, we confirmed binding of PIF5 to 10 (out of 10) genes
38 selected based on the presence of a PIF5 binding site and misexpression in
39
40
41
42
43
44
45
46
47
48
49
50
51
52
53
54
55
56
57
58
59
60

1
2
3 response to shade (interaction list) (Figures 1, 4, S2). Moreover PIF4-HA also
4
5 bound to the promoter of all tested genes (*FHL*, *CKX5*, *IAA29* and *YUC8*, Figure
6
7 4D). This suggests that both PIF4 and PIF5 directly control the expression of
8
9 shade-regulated genes including genes coding for auxin biosynthesis and
10
11 signaling (Figure 4D).
12
13

14 15 16 PIF4 and PIF5 regulate gene expression in low PAR 17

18
19 Our gene expression analysis identified numerous genes misexpressed in
20
21 *pif4pif5* in our high R/FR conditions (Figure 4A). These conditions correspond to
22
23 relatively low PAR, which prompted us to analyze the implication of PIF4 and
24
25 PIF5 in low PAR more carefully. Using a FDR < 0.05 we found 521 genes whose
26
27 expression was different between *pif4pif5* and the wild type (Figure 5)
28
29 (supplementary table 4). Close to 80% of these genes showed reduced
30
31 expression in *pif4pif5* suggesting that PIF4 and PIF5 primarily promote gene
32
33 expression. Hierarchical cluster analysis identified four main expression classes
34
35 (Figure 5A). Among the genes that were downregulated in *pif4pif5* only a subset
36
37 was expressed at a higher level in *PIF5-HA* than in the wild type (compare
38
39 groups I and II). A third cluster contained genes that were downregulated in
40
41 *pif4pif5* and even further downregulated in *PIF5-HA*. Finally, the last group
42
43 contained genes with a higher expression in *pif4pif5* than in the wild type.
44
45 Generally speaking, the *pif5* expression phenotype was intermediate between
46
47 the one of the WT and *pif4pif5* (Figure 5A). Analysis of GO term enriched among
48
49 these 521 genes include response to hormone stimulus, response to auxin,
50
51 response to light stimulus and response to radiation, terms that were all
52
53
54
55
56
57
58
59
60

1
2
3 previously identified in our GO analysis of genes nearby PIF5 peaks in low R/FR-
4
5 grown seedlings.
6
7

8
9
10 We hypothesized that PIF4 and PIF5 might play a particularly important role in
11
12 low light intensity, which prompted us to analyzed seedling growth of the WT,
13
14 *pif4*, *pif5*, *pif4pif5* and the *pif1pif3pif4pif5* (*pifq*) mutants under several intensities
15
16 of PAR (Figure 5B). Interestingly, while the *pif* mutants showed no significant
17
18 defect in hypocotyl elongation under high PAR, phenotype strength increased
19
20 with decreasing PAR (Figure 5B). Similar to the gene expression phenotype *pif5*
21
22 showed a phenotype intermediate between the WT and *pif4pif5*. Finally the *pifq*
23
24 hypocotyl elongation phenotype was stronger than the one of *pif4pif5* only at the
25
26 lowest fluence rate tested (Figure 5B).
27
28
29
30
31

32
33 In order to determine whether the hypocotyl elongation phenotype correlated
34
35 with gene expression, we analyzed the expression of several genes under high
36
37 and low PAR conditions by RT-Q-PCR. We concentrated on genes with the GO
38
39 term auxin as this term was strongly overrepresented and auxin has been
40
41 implicated in growth. The expression of these genes was lower in high than low
42
43 PAR correlating with the shorter hypocotyls of seedlings grown in high PAR
44
45 conditions (Figure 5C). Moreover, we found a good correlation between gene
46
47 expression and hypocotyl length, as differences in gene expression between Col
48
49 and *pif4pif5* are smaller in high compared to low PAR (Figure 5C). In order to
50
51 determine whether these genes were bound by PIF4 and PIF5 in low PAR we
52
53 conducted ChIP experiments. PIF4-HA and PIF5-HA bound to the promoters of
54
55 genes involved in auxin biosynthesis and signaling (*IAA29*, *YUC8*) suggesting that
56
57
58
59
60

1
2
3 they also control growth by directly regulating auxin synthesis and signaling in
4
5 low PAR but high R/FR (Figure 5D). Binding of both transcription factors was
6
7 also observed in the promoter of the shade marker genes *PIL1* and *HFR1*, which
8
9 also show higher expression in low compared to high PAR (Figure 5D).
10
11

12 13 14 PIF4 and PIF5 control growth by directly regulating auxin signaling

15
16 Our gene expression, ChIP and physiological experiments suggested that PIF4
17
18 and PIF5 control hypocotyl elongation by controlling auxin biosynthesis and/or
19
20 signaling (Figures 4 and 5). We thus determined auxin levels in the aerial parts
21
22 of young seedlings maintained in high R/FR or transferred for an hour into low
23
24 R/FR because it was previously shown that such a treatment leads to an increase
25
26 in auxin concentration (Tao *et al.* 2008). We confirmed that a low R/FR
27
28 treatment increased auxin concentration in the WT. Interestingly the shade-
29
30 mediated increase was much reduced both in *pif4pif5* and in *PIF5-HA* (Figure 6).
31
32 The auxin concentration in high R/FR was normal in *pif4pif5* while in *PIF5-HA* it
33
34 was reduced (Figure 6).
35
36
37
38
39
40

41
42 In order to analyze auxin sensitivity of *pif4pif5*, we compared hypocotyl
43
44 elongation of the mutant and the wild type grown in presence of different
45
46 concentrations of picloram. This experiment showed that the auxin sensitivity of
47
48 *pif4pif5* was altered particularly under low PAR (Figure 7A and 7B). In addition
49
50 we tested the effect of picloram on gene expression and compared it with the
51
52 effect of shade. *HFR1* was upregulated by shade but not picloram while *IAA29*
53
54 expression was induced by both treatments in *pif4pif5* and the WT (Figure 7C).
55
56 However, the expression of *IAA29* in *pif4pif5* never reached WT levels when
57
58
59
60

1
2
3
4
5
6
7
8
9
10
11
12
13
14
15
16
17
18
19
20
21
22
23
24
25
26
27
28
29
30
31
32
33
34
35
36
37
38
39
40
41
42
43
44
45
46
47
48
49
50
51
52
53
54
55
56
57
58
59
60

seedlings were treated by picloram or shade (Figure 7C). Collectively our data suggest that PIF4 and PIF5 control hypocotyl growth at least partially by directly controlling the expression of genes involved in auxin biosynthesis and signaling.

Discussion

To get a broader view of the role of PIF5 and PIF4 during the SAS, we analyzed their contribution to gene expression in seedlings treated with low R/FR and identified PIF5 binding sites genome-wide. ChIP-seq revealed a large number of genes in proximity of which we found PIF5 binding sites, a number that is comparable to those identified in genome-wide ChIP experiments for other transcription factors involved in light signaling (Lee *et al.* 2007, Oh *et al.* 2009, Ouyang *et al.* 2011). Binding sites were abundant 5' of transcription start sites (TSS) with a further enrichment within the first 500nt directly upstream of the TSS. A similar binding pattern was reported for other members of the bHLH family (Oh *et al.* 2009, Morohashi and Grotewold 2009). PIF5 peaks were strongly enriched in E- and G-boxes (96/55% of peaks), another feature shared with PIF1 (Oh *et al.* 2009). By comparing the sequences bound by PIF5 *in vitro* with our ChIP-seq data we conclude that most PIF5 binding on chromatin reflects direct binding to DNA (Figure 1, 3 and S1). Although *in vitro* PIF5 exclusively binds to G-boxes with high affinity our ChIP data shows that a sizable fraction of PIF5 ChIP peaks do not contain a G-box (Figures 1 and 3). Several hypotheses can explain this apparent paradox and future experiments are needed to understand this difference.

Interestingly, *in vitro* binding experiments show that although PIF4 and PIF5 have a preference for G-boxes, as was previously reported for several members of this family, PIF4 robustly binds to a wider range of sequences than PIF5 (Figure 3) (Martinez-Garcia *et al.* 2000, Huq and Quail 2002, Huq *et al.* 2004). All

1
2
3 the genes we tested for PIF5 binding *in vivo* were also bound by PIF4 indicating
4 that *in vivo* PIF4 and PIF5 share an overlapping set of binding sites (Figures 4
5 and 5). This is consistent with the additive phenotype of *pif4* and *pif5* that was
6 reported in several situations including during shade avoidance (Lorrain *et al.*
7 2008, Lorrain *et al.* 2009, Nozue *et al.* 2007) (Figures 4 and 5). However,
8 hypocotyl elongation in response to temperature involves PIF4 and not PIF5,
9 which is difficult to explain based on the similar expression patterns of those
10 genes (Foreman *et al.* 2011, Koini *et al.* 2009, Nozue *et al.* 2007, Stavang *et al.*
11 2009). The greater number of E-box variants efficiently bound by PIF4 may
12 provide an explanation for the specific functions of PIF4 (Figure 3). The fact that
13 over-expression of PIF4 leads to a stronger and more pleiotropic phenotype than
14 over-expression of PIF5 is consistent with this hypothesis (Lorrain *et al.* 2008).

15
16
17
18
19
20
21
22
23
24
25
26
27
28
29
30
31
32 Gene expression analyses were conducted to identify those requiring PIF4/PIF5
33 for normal regulation by a low R/FR treatment (Figure 4A). Among these genes
34 a small group required PIF4/PIF5 for robust low R/FR-induced expression
35 (Figure 4A). With the exception of one gene all members of this group also show
36 PIF5 binding 5' of their TSS (Figure 4). Given that our subsequent ChIP analysis
37 also showed binding of PIF4 to the promoters of all tested group 2 genes, they
38 represent likely direct targets of both PIF4 and PIF5 (Figure 4). This group
39 includes previously identified PIF5 targets *PIL1*, *HFR1* and *ATHB2* and we show
40 that PIF4 also binds to promoter regions of these genes (Figure 4) (Hornitschek
41 *et al.* 2009, Kunihiro *et al.* 2011). This was confirmed for *PIL1* where the 3 G-
42 boxes present in the PIF5 binding peak are essential for shade-induced
43 expression in seedlings (Figure 2). These data show that *PIL1* is a direct target of
44
45
46
47
48
49
50
51
52
53
54
55
56
57
58
59
60

1
2
3 PIF4 and PIF5 because the transcription factors and the sequence to which they
4
5 bind are both needed for robust shade-induced expression.
6
7

8
9
10 While some group 2 genes promote the SAS (*ATHB2*) others (*HFR1*, *PIL1*) play a
11
12 negative role in shade avoidance (Hornitschek *et al.* 2009, Salter *et al.* 2003,
13
14 Sessa *et al.* 2005, Sorin *et al.* 2009). The other members of this group are *PIL2*,
15
16 *FHL*, *CKX5*, *ATMGL*, a B-box type zinc finger protein (At5g54470 or BBX29) and
17
18 an unknown protein in the promoter of which we found no PIF5 peak (Figures 4
19
20 and supplementary table 1). FHL mediates import of phytochrome A (phyA) into
21
22 the nucleus (Hiltbrunner *et al.* 2006, Rosler *et al.* 2007). phyA plays a negative
23
24 role in the SAS (Salter *et al.* 2003), moreover the levels of FHY1 and FHL are
25
26 limiting thus controlling the extent of phyA import into the nucleus
27
28 (Rausenberger *et al.* 2011). The shade-induced up-regulation of *FHL* may thus
29
30 contribute to phyA-mediated inhibition of the SAS by promoting its import into
31
32 the nucleus. BBX29 belongs to the Arabidopsis B-box family which includes
33
34 members with a role in light signaling, in particular BBX21 that negatively
35
36 regulates shade-avoidance (Khanna *et al.* 2009, Crocco *et al.* 2010). CKX5 is
37
38 involved in cytokinin catabolism and CKX6, a close homologue of CKX5, regulates
39
40 the SAS (Carabelli *et al.* 2007). CKX6 does not control hypocotyl elongation but
41
42 limits leaf primordia growth in plants subjected to a shade treatment (Carabelli
43
44 *et al.* 2007). *CKX6* expression is upregulated by shade and auxin linking
45
46 cytokinin-mediated responses to shade and auxin (Carabelli *et al.* 2007). By
47
48 analogy with the role of CKX6 it is conceivable that CKX5 also acts as a negative
49
50 regulator of the SAS (Figure 4). *PIL2* is a member of the PIF family that also
51
52 shows shade-induced gene expression, however its function is poorly
53
54
55
56
57
58
59
60

1
2
3 understood (Salter *et al.* 2003, Yamashino *et al.* 2003). Finally, ATMGL is
4
5 involved in methionine catabolism and its role in shade avoidance is currently
6
7 unknown (Rebeille *et al.* 2006). Collectively these data indicate that PIF4 and
8
9 PIF5 directly control the expression of several genes acting as negative
10
11 regulators of the shade avoidance response (Figures 4 and 5). The relatively
12
13 normal expression of many shade-regulated genes in *pif4pif5* and the reduced
14
15 induction of several negative regulators of the SAS in *pif4pif5* may explain why a
16
17 low R/FR signal still induces hypocotyl growth in *pif4pif5* (Figure 4) (Cole *et al.*
18
19 2011, Hornitschek *et al.* 2009, Lorrain *et al.* 2008).

20
21
22
23
24
25
26 Our gene expression analysis showed that numerous genes are misexpressed in
27
28 *pif4pif5* grown in high R/FR conditions (Figures 4 and 5). Combined with our
29
30 ChIP analysis we conclude that PIF4 and PIF5 are likely direct regulators of the
31
32 expression of a number of these genes in high R/FR conditions (Figure 5).
33
34 Importantly our high R/FR conditions correspond to relatively low PAR a
35
36 condition in which PIF4/PIF5 were previously shown to control growth (Keller
37
38 *et al.* 2011). Interestingly we show that by increasing PAR we can correct both
39
40 hypocotyl length and gene expression in *pif4pif5* (Figure 5). We made similar
41
42 observation during de-etiolation in far-red light (Lorrain *et al.* 2009). Many of
43
44 the genes showing reduced expression in *pif4pif5* in high R/FR are strongly
45
46 induced by shade in the mutant suggesting that another transcriptional regulator
47
48 controls their expression in response to low R/FR (Figure 4). Other members of
49
50 the PIF family are candidates for such a function given that they bind to similar
51
52 DNA sequences and can act additively (Figure 3)(Martinez-Garcia *et al.* 2000,
53
54 Huq and Quail 2002, Huq *et al.* 2004, Leivar *et al.* 2008, Shin *et al.* 2009).

1
2
3
4
5 Both the analysis of genes bound by PIF5 and genes misregulated in the *pif4pif5*
6
7 mutant show a strong over-representation of the GO term response to auxin
8
9 stimulus and response to hormone stimulus (supplementary table 2). This is
10
11 remarkable in view of the strong links between auxin and shade avoidance
12
13 (Keller *et al.* 2011, Keuskamp *et al.* 2010, Kozuka *et al.* 2010, Morelli and Ruberti
14
15 2000, Roig-Villanova *et al.* 2007, Tao *et al.* 2008). These results are also in
16
17 agreement with the recent findings linking PIF4 and PIF5 to auxin-mediated
18
19 growth responses (Franklin *et al.* 2011, Nozue *et al.* 2011). By comparing the
20
21 genes misregulated in our high R/FR conditions with the genes whose
22
23 expression correlates with growth and requires PIF4 and PIF5 for normal
24
25 expression we found a large overlap (Nozue *et al.* 2011) (Figure 5,
26
27 supplementary table 5). Taken together with previous studies our data suggest
28
29 that PIF4 and PIF5 modulate elongation growth responses by directly regulating
30
31 auxin-controlled responses at multiple levels.
32
33
34
35
36
37
38

39
40 In warm conditions PIF4 binds to the promoter and controls the expression of
41
42 *TAA1* and *CYP79B2*, two genes coding for auxin biosynthetic enzymes (Franklin
43
44 *et al.* 2011). Although *TAA1/SAV3* is essential for the SAS, its expression is not
45
46 induced by shade rendering it unlikely that PIF4 and/or PIF5 control shade-
47
48 induced growth by regulating *TAA1* expression (Tao *et al.* 2008). However, we
49
50 found members of the YUCCA family that act downstream of *TAA1* in auxin
51
52 biosynthesis have PIF5 binding sites in their promoter (*YUC5*, *YUC8* and *YUC9*)
53
54 (supplementary table 1) (Mashiguchi *et al.* 2011, Stepanova *et al.* 2011, Won *et al.*
55
56 2011). YUCCA proteins are rate limiting for auxin biosynthesis and increasing
57
58
59
60

1
2
3 their expression leads to hypocotyl elongation (Mashiguchi *et al.* 2011, Won *et al.*
4 2011, Zhao *et al.* 2001). The increased expression of several *YUCCA* genes in
5 response to low R/FR may thus contribute to shade-induced hypocotyl
6 elongation. We show that both PIF4 and PIF5 bind to the promoter of *YUC8* and
7 that the gene displays reduced expression in *pif4* and *pif5* mutants suggesting
8 that PIF4 and PIF5 might directly control auxin biosynthesis. We thus
9 determined auxin content in *pif4pif5* seedlings grown in high R/FR with or
10 without a one-hour low R/FR shade treatment. Despite the reduced *YUC8*
11 expression in *pif4pif5* grown in high R/FR we found a wild-type auxin content in
12 aerial parts of these seedlings (Figures 4, 5 and 6). More local auxin content
13 measurements may reveal differences between *pif4pif5* and the wild type and
14 thus explain the shorter hypocotyl of these seedlings grown in high R/FR but low
15 PAR. Of note, the *PIF5-HA* line that was used for CHIP-seq had the lowest auxin
16 content of all lines despite having the longest hypocotyls (Figure 6) (Lorrain *et al.*
17 2008). This indicates that despite a promoting effect of auxin on hypocotyl
18 growth the auxin content in aerial parts does not simply correlate with hypocotyl
19 length. Another unanticipated finding was that in *pif4pif5* the low R/FR-induced
20 increase in auxin was strongly reduced although this mutant shows hypocotyl
21 elongation in response to low R/FR both in long-term and short-term
22 measurements (Cole *et al.* 2011, Lorrain *et al.* 2008). Again more localized auxin
23 measurements may help with the interpretation of these results.
24
25
26
27
28
29
30
31
32
33
34
35
36
37
38
39
40
41
42
43
44
45
46
47
48
49
50
51
52
53
54
55
56
57
58
59
60

We provide evidence for a direct link between PIF4 and PIF5 and auxin signaling by showing that PIF4 and PIF5 bind to the promoter region of *IAA29* a gene that shows reduced levels in *pif4*, *pif5* and *pif4pif5* (Figures 4 and 5). *IAA29*

1
2
3 expression can be induced by the addition of picloram to *pif4pif5*, however both
4
5 in response to shade and in response to picloram *IAA29* expression does not
6
7 reach wild-type levels in the mutant (Figure 7). In addition we analyzed
8
9 hypocotyl elongation in response to picloram and consistent with a previous
10
11 study found that auxin sensitivity in *pif4pif5* was altered (Figure 7) (Nozue *et al.*
12
13 2011). Importantly auxin sensitivity was most altered in low PAR conditions,
14
15 where we also found greater gene expression defects in *pif4pif5* (Figures 5 and
16
17 7). We thus suggest that PIFs modulate plant growth by directly controlling the
18
19 expression of auxin signaling genes. Moreover, we propose that PIF-mediated
20
21 control of auxin-driven growth might involve different mechanisms (transport,
22
23 signaling, synthesis) in different situations (this work) (Franklin *et al.* 2011).
24
25
26
27
28
29
30
31
32
33
34
35
36
37
38
39
40
41
42
43
44
45
46
47
48
49
50
51
52
53
54
55
56
57
58
59
60

Materials and Methods

Plant material and growth conditions

Seedlings were grown as described in (Hornitschek *et al.* 2009) except that PAR intensity was $40 \mu \text{ mol m}^{-2} \text{ s}^{-1}$. The *pif4*, *pif5* and *pif4pif5* mutants as well as the transgenic lines were in the Columbia background (Col-0) and were described in (Lorrain *et al.* 2008).

Cloning procedure and generation of transgenic lines

The generation of new transgenic lines is described in detail in the supplementary materials and methods.

GUS staining and MUG assay

GUS staining and quantitative determination of GUS activity (MUG assays were performed according to standard procedures and described in detail in the supplementary materials and methods.

Picloram treatment and quantification of IAA

Picloram (SIGMA-Aldrich) was dissolved in DMSO at 400mM. Seeds were sown on a nylon mesh on ½ strength MS plates that were kept vertical during the experiment. On day 4, nylon meshes were transferred to new ½ strength MS plates containing different concentrations of picloram. Seedlings were grown 4 more days on those plates before being photographed and measured using the ImageJ software. For gene expression analysis in response to picloram, 50 seeds were sown on a nylon mesh on ½ strength MS petri dishes and grown 7 days in

1
2
3 constant light conditions. At day 7, seedlings were transferred in 1ml of liquid ½
4
5 strength MS with 5 μ M picloram or 0.01% DMSO as a control for additional 2
6
7 hours.
8
9

10
11
12 Seedlings were pooled in quintuplicates, weighted and frozen in liquid nitrogen
13
14 for quantification of free IAA according to (Andersen *et al.* 2008).
15
16

17 18 19 Identification of PIF4, PIF5 and HFR1 binding sites *in vitro*

20
21 Given the expected size of the DNA-motif recognized by PIF4, PIF5 and HFR1 a
22
23 10 nucleotides design in PBM was chosen. In this case, we used the same PBM
24
25 design as in (Berger and Bulyk 2009). Protein incubation was as in (Godoy *et al.*
26
27 2011) but in these cases we employed soluble protein extracts from recombinant
28
29 *E. coli* cultures expressing MBP-PIF4, MBP-PIF5 and MBP-HFR1 recombinant
30
31 proteins. Synthesis of double-stranded microarray and immunological detection
32
33 of DNA-protein complexes were as in (Godoy *et al.* 2011).
34
35
36
37
38

39 40 Analysis of gene expression

41
42 RNA extraction and RT-QPCR experiment were performed as described in
43
44 (Lorrain *et al.* 2009) except that results were analyzed using the qbase^{PLUS}
45
46 software (<http://www.biogazelle.com/products>). Primer sequence is given in
47
48 Supplementary Table 6.
49
50

51
52
53 For microarray analysis samples were amplified, labeled and hybridized on
54
55 Affymetrix® Arabidopsis ATH1 Genome arrays as described previously (Lorrain
56
57 *et al.* 2009). Subsequent data analysis was performed using the statistical
58
59
60

1
2
3 language R (<http://www.R-project.org>) and various Bioconductor packages
4
5 (<http://www.Bioconductor.org>). Normalized expression signals were calculated
6
7 using RMA, and differential hybridized features were identified using LIMMA, as
8
9 before (Lorrain *et al.* 2009). We used a statistical model where the four
10
11 conditions were included as factors and then extracted the comparisons of
12
13 interest as contrasts: (i) *pif4pif5* double mutant versus the wild type in high
14
15 R/FR (ii) *pif4pif5* double mutant versus the wild type in low R/FR, (iii)
16
17 interaction between high and low R/FR factor and mutant/wild-type factor. P
18
19 values from each comparison were adjusted separately for multiple testing with
20
21 the Benjamini and Hochberg method to control the false discovery rate (FDR).
22
23 Genes depicted as heat map were mean centered and analyzed by average
24
25 linkage hierarchical clustering (Cluster 3.0) and subsequently visualized using
26
27 Java TreeView. Gene Ontology (GO) terms belonging to the GO Biological Process
28
29 or Interpro database were tested for enrichment using DAVID. Microarray and
30
31 ChIP-seq data can be obtained from the Gene Expression Omnibus (GEO)
32
33 database (GSE35062).
34
35
36
37
38
39
40

41 ChIP sequencing

42
43 The ChIP experiment was performed as described in (Hornitschek *et al.* 2009). A
44
45 detailed description of the ChIP-seq procedure can be found in the
46
47 supplementary materials and methods.
48
49
50

51 **Supplemental data**

52
53
54
55
56
57
58
59
60
Supplementary materials and methods.

1
2
3 Supplementary Figure S1. PIF5 binds with different frequency to various E-box
4 sequences *in vivo*.

5
6
7 Supplementary Figure S2. Additional ChIP PCR experiments on selected genes.

8
9
10 Supplementary table 1. List of genes with a PIF5 peak identified by ChIP sequ.

11
12 Supplementary table 2. Lists of GO analysis.

13
14 Supplementary table 3. List of genes showing an altered regulation of gene
15 expression in *pif4pif5* in response to low R/FR.

16
17
18 Supplementary table 4. List of genes with altered expression in *pif4pif5* grown in
19 high R/FR.

20
21
22 Supplementary table 5. Comparison of PIF4/5-regulated gene expression
23 performed in (Nozue *et al.* 2011) with our analysis (table 4).

24
25
26
27
28 Supplementary table 6. List of primers used in this study.

29 30 31 32 **Acknowledgements**

33
34
35 This work was supported by the University of Lausanne, a grant from the Swiss
36 National Science Foundation (3100A0-112638) to C.F. and the SystemsX.ch grant
37 “plant growth in a changing environment” to C.F. and I.X, the Spanish Ministerio
38 de Ciencia e Innovación CSD2007-00057-B (TRANSPLANTA) to R.S. We thank
39 the Lausanne Genomic Technologies Facility (LGTF) for help with quantitative
40 PCR analysis. Laure Allenbach for technical support, Viviane Praz for help with
41 bioinformatics and Frédéric Schütz (SIB) for advice on statistics.
42
43
44
45
46
47
48
49
50
51
52
53
54
55
56
57
58
59
60

References

- 1
2
3
4
5
6
7
8 **Andersen, S.U., Buechel, S., Zhao, Z., Ljung, K., Novak, O., Busch, W., Schuster,**
9 **C. and Lohmann, J.U.** (2008) Requirement of B2-type cyclin-dependent
10 kinases for meristem integrity in *Arabidopsis thaliana*. *Plant Cell*, **20**, 88-
11 100.
- 12 **Ballare, C.L.** (1999) Keeping up with the neighbours: phytochrome sensing and
13 other signalling mechanisms. *Trends Plant Sci*, **4**, 97-102.
- 14 **Ballare, C.L.** (2009) Illuminated behaviour: phytochrome as a key regulator of
15 light foraging and plant anti-herbivore defence. *Plant Cell Environ*, **32**,
16 713-725.
- 17 **Berger, M.F. and Bulyk, M.L.** (2009) Universal protein-binding microarrays for
18 the comprehensive characterization of the DNA-binding specificities of
19 transcription factors. *Nat Protoc*, **4**, 393-411.
- 20 **Carabelli, M., Possenti, M., Sessa, G., Ciolfi, A., Sassi, M., Morelli, G. and**
21 **Ruberti, I.** (2007) Canopy shade causes a rapid and transient arrest in
22 leaf development through auxin-induced cytokinin oxidase activity. *Genes*
23 *Dev*, **21**, 1863-1868.
- 24 **Cole, B., Kay, S.A. and Chory, J.** (2011) Automated analysis of hypocotyl growth
25 dynamics during shade avoidance in *Arabidopsis*. *Plant J*, **65**, 991-1000.
- 26 **Crocco, C.D., Holm, M., Yanovsky, M.J. and Botto, J.F.** (2010) AtBBX21 and
27 COP1 genetically interact in the regulation of shade avoidance. *Plant J*, **64**,
28 551-562.
- 29 **Devlin, P.F., Yanovsky, M.J. and Kay, S.A.** (2003) A genomic analysis of the
30 shade avoidance response in *Arabidopsis*. *Plant Physiol*, **133**, 1617-1629.
- 31 **Djakovic-Petrovic, T., de Wit, M., Voesenek, L.A. and Pierik, R.** (2007) DELLA
32 protein function in growth responses to canopy signals. *Plant J*, **51**, 117-
33 126.
- 34 **Fankhauser, C. and Chen, M.** (2008) Transposing phytochrome into the nucleus.
35 *Trends Plant Sci*, **13**, 596-601.
- 36 **Foreman, J., Johansson, H., Hornitschek, P., Josse, E.M., Fankhauser, C. and**
37 **Halliday, K.J.** (2011) Light receptor action is critical for maintaining plant
38 biomass at warm ambient temperatures. *Plant J*, **65**, 441-452.
- 39 **Franklin, K.A.** (2008) Shade avoidance. *New Phytol*, **179**, 930-944.
- 40 **Franklin, K.A., Lee, S.H., Patel, D., Kumar, S.V., Spartz, A.K., Gu, C., Ye, S., Yu,**
41 **P., Breen, G., Cohen, J.D., Wigge, P.A. and Gray, W.M.** (2011)
42 PHYTOCHROME-INTERACTING FACTOR 4 (PIF4) regulates auxin
43 biosynthesis at high temperature. *Proc Natl Acad Sci U S A*, **108**, 20231-
44 20235.
- 45 **Franklin, K.A. and Quail, P.H.** (2010) Phytochrome functions in *Arabidopsis*
46 development. *J Exp Bot*, **61**, 11-24.
- 47 **Galstyan, A., Cifuentes-Esquivel, N., Bou-Torrent, J. and Martinez-Garcia, J.F.**
48 (2011) The shade avoidance syndrome in *Arabidopsis*: a fundamental
49 role for atypical basic helix-loop-helix proteins as transcriptional
50 cofactors. *Plant J*, **66**, 258-267.
- 51 **Godoy, M., Franco-Zorrilla, J.M., Perez-Perez, J., Oliveros, J.C., Lorenzo, O.**
52 **and Solano, R.** (2011) Improved protein-binding microarrays for the
53
54
55
56
57
58
59
60

- 1
2
3 identification of DNA-binding specificities of transcription factors. *Plant J*,
4 **66**, 700-711.
- 5 **Hao, Y., Oh, E., Choi, G., Liang, Z. and Wang, Z.Y.** (2012) Interactions between
6 HLH and bHLH Factors Modulate Light-Regulated Plant Development. *Mol*
7 *Plant*.
- 8 **Hiltbrunner, A., Tscheuschler, A., Viczian, A., Kunkel, T., Kircher, S. and**
9 **Schafer, E.** (2006) FHY1 and FHL act together to mediate nuclear
10 accumulation of the phytochrome A photoreceptor. *Plant Cell Physiol*, **47**,
11 1023-1034.
- 12 **Hornitschek, P., Lorrain, S., Zoete, V., Michielin, O. and Fankhauser, C.**
13 (2009) Inhibition of the shade avoidance response by formation of non-
14 DNA binding bHLH heterodimers. *EMBO J*, **28**, 3893-3902.
- 15 **Huq, E., Al-Sady, B., Hudson, M., Kim, C., Apel, K. and Quail, P.H.** (2004)
16 Phytochrome-interacting factor 1 is a critical bHLH regulator of
17 chlorophyll biosynthesis. *Science*, **305**, 1937-1941.
- 18 **Huq, E. and Quail, P.H.** (2002) PIF4, a phytochrome-interacting bHLH factor,
19 functions as a negative regulator of phytochrome B signaling in
20 Arabidopsis. *EMBO J*, **21**, 2441-2450.
- 21 **Kami, C., Lorrain, S., Hornitschek, P. and Fankhauser, C.** (2010) Light-
22 regulated plant growth and development. *Curr Top Dev Biol*, **91**, 29-66.
- 23 **Keller, M.M., Jaillais, Y., Pedmale, U.V., Moreno, J.E., Chory, J. and Ballare, C.L.**
24 (2011) Cryptochrome 1 and phytochrome B control shade-avoidance
25 responses in Arabidopsis via partially independent hormonal cascades.
26 *Plant J*, **67**, 195-207.
- 27 **Keuskamp, D.H., Pollmann, S., Voeselek, L.A., Peeters, A.J. and Pierik, R.**
28 (2010) Auxin transport through PIN-FORMED 3 (PIN3) controls shade
29 avoidance and fitness during competition. *Proc Natl Acad Sci U S A*, **107**,
30 22740-22744.
- 31 **Keuskamp, D.H., Sasidharan, R., Vos, I., Peeters, A.J., Voeselek, L.A. and**
32 **Pierik, R.** (2011) Blue-light-mediated shade avoidance requires
33 combined auxin and brassinosteroid action in Arabidopsis seedlings.
34 *Plant J*, **67**, 208-217.
- 35 **Khanna, R., Kronmiller, B., Maszle, D.R., Coupland, G., Holm, M., Mizuno, T.**
36 **and Wu, S.H.** (2009) The Arabidopsis B-box zinc finger family. *Plant Cell*,
37 **21**, 3416-3420.
- 38 **Koini, M.A., Alvey, L., Allen, T., Tilley, C.A., Harberd, N.P., Whitelam, G.C. and**
39 **Franklin, K.A.** (2009) High temperature-mediated adaptations in plant
40 architecture require the bHLH transcription factor PIF4. *Curr Biol*, **19**,
41 408-413.
- 42 **Kozuka, T., Kobayashi, J., Horiguchi, G., Demura, T., Sakakibara, H., Tsukaya,**
43 **H. and Nagatani, A.** (2010) Involvement of auxin and brassinosteroid in
44 the regulation of petiole elongation under the shade. *Plant Physiol*, **153**,
45 1608-1618.
- 46 **Kunihiro, A., Yamashino, T., Nakamichi, N., Niwa, Y., Nakanishi, H. and**
47 **Mizuno, T.** (2011) Phytochrome-interacting factor 4 and 5 (PIF4 and
48 PIF5) activate the homeobox ATHB2 and auxin-inducible IAA29 genes in
49 the coincidence mechanism underlying photoperiodic control of plant
50 growth of Arabidopsis thaliana. *Plant Cell Physiol*, **52**, 1315-1329.
- 51
52
53
54
55
56
57
58
59
60

- 1
2
3 **Langmead, B., Trapnell, C., Pop, M. and Salzberg, S.L.** (2009) Ultrafast and
4 memory-efficient alignment of short DNA sequences to the human
5 genome. *Genome Biol*, **10**, R25.
- 6 **Lee, J., He, K., Stolc, V., Lee, H., Figueroa, P., Gao, Y., Tongprasit, W., Zhao, H.,**
7 **Lee, I. and Deng, X.W.** (2007) Analysis of transcription factor HY5
8 genomic binding sites revealed its hierarchical role in light regulation of
9 development. *Plant Cell*, **19**, 731-749.
- 10 **Leivar, P., Monte, E., Oka, Y., Liu, T., Carle, C., Castillon, A., Huq, E. and Quail,**
11 **P.H.** (2008) Multiple phytochrome-interacting bHLH transcription factors
12 repress premature seedling photomorphogenesis in darkness. *Curr Biol*,
13 **18**, 1815-1823.
- 14 **Lorrain, S., Allen, T., Duek, P.D., Whitelam, G.C. and Fankhauser, C.** (2008)
15 Phytochrome-mediated inhibition of shade avoidance involves
16 degradation of growth-promoting bHLH transcription factors. *Plant J*, **53**,
17 312-323.
- 18 **Lorrain, S., Trevisan, M., Pradervand, S. and Fankhauser, C.** (2009)
19 Phytochrome interacting factors 4 and 5 redundantly limit seedling de-
20 etiolation in continuous far-red light. *Plant J*, **60**, 449-461.
- 21 **Martinez-Garcia, J.F., Galstyan, A., Salla-Martret, M., Cifuentes-Esquivel, N.,**
22 **Gallemi, M. and Bou-Torrent, J.** (2010) Regulatory Components of
23 Shade Avoidance Syndrome. *Advances in Botanical Research, Vol 53*, **53**,
24 65-116.
- 25 **Martinez-Garcia, J.F., Huq, E. and Quail, P.H.** (2000) Direct targeting of light
26 signals to a promoter element-bound transcription factor. *Science*, **288**,
27 859-863.
- 28 **Mashiguchi, K., Tanaka, K., Sakai, T., Sugawara, S., Kawaide, H., Natsume, M.,**
29 **Hanada, A., Yaeno, T., Shirasu, K., Yao, H., McSteen, P., Zhao, Y.,**
30 **Hayashi, K., Kamiya, Y. and Kasahara, H.** (2011) The main auxin
31 biosynthesis pathway in Arabidopsis. *Proc Natl Acad Sci U S A*, **108**,
32 18512-18517.
- 33 **Morelli, G. and Ruberti, I.** (2000) Shade avoidance responses. Driving auxin
34 along lateral routes. *Plant Physiol*, **122**, 621-626.
- 35 **Morohashi, K. and Grotewold, E.** (2009) A systems approach reveals regulatory
36 circuitry for Arabidopsis trichome initiation by the GL3 and GL1 selectors.
37 *PLoS Genet*, **5**, e1000396.
- 38 **Nagatani, A.** (2004) Light-regulated nuclear localization of phytochromes. *Curr*
39 *Opin Plant Biol*, **7**, 708-711.
- 40 **Nozue, K., Covington, M.F., Duek, P.D., Lorrain, S., Fankhauser, C., Harmer,**
41 **S.L. and Maloof, J.N.** (2007) Rhythmic growth explained by coincidence
42 between internal and external cues. *Nature*, **448**, 358-361.
- 43 **Nozue, K., Harmer, S.L. and Maloof, J.N.** (2011) Genomic analysis of circadian
44 clock-, light-, and growth-correlated genes reveals PHYTOCHROME-
45 INTERACTING FACTOR5 as a modulator of auxin signaling in Arabidopsis.
46 *Plant Physiol*, **156**, 357-372.
- 47 **Oh, E., Kang, H., Yamaguchi, S., Park, J., Lee, D., Kamiya, Y. and Choi, G.** (2009)
48 Genome-wide analysis of genes targeted by PHYTOCHROME
49 INTERACTING FACTOR 3-LIKE5 during seed germination in Arabidopsis.
50 *Plant Cell*, **21**, 403-419.
- 51
52
53
54
55
56
57
58
59
60

- 1
2
3 **Ouyang, X., Li, J., Li, G., Li, B., Chen, B., Shen, H., Huang, X., Mo, X., Wan, X., Lin,**
4 **R., Li, S., Wang, H. and Deng, X.W.** (2011) Genome-wide binding site
5 analysis of FAR-RED ELONGATED HYPOCOTYL3 reveals its novel function
6 in Arabidopsis development. *Plant Cell*, **23**, 2514-2535.
- 7
8 **Pierik, R., Cuppens, M.L., Voesenek, L.A. and Visser, E.J.** (2004) Interactions
9 between ethylene and gibberellins in phytochrome-mediated shade
10 avoidance responses in tobacco. *Plant Physiol*, **136**, 2928-2936.
- 11 **Rausenberger, J., Tscheuschler, A., Nordmeier, W., Wust, F., Timmer, J.,**
12 **Schafer, E., Fleck, C. and Hiltbrunner, A.** (2011) Photoconversion and
13 nuclear trafficking cycles determine phytochrome A's response profile to
14 far-red light. *Cell*, **146**, 813-825.
- 15 **Rebeille, F., Jabrin, S., Bligny, R., Loizeau, K., Gambonnet, B., Van Wilder, V.,**
16 **Douce, R. and Ravanel, S.** (2006) Methionine catabolism in Arabidopsis
17 cells is initiated by a gamma-cleavage process and leads to S-
18 methylcysteine and isoleucine syntheses. *Proc Natl Acad Sci U S A*, **103**,
19 15687-15692.
- 20
21 **Roider, H.G., Kanhere, A., Manke, T. and Vingron, M.** (2007) Predicting
22 transcription factor affinities to DNA from a biophysical model.
23 *Bioinformatics*, **23**, 134-141.
- 24 **Roig-Villanova, I., Bou-Torrent, J., Galstyan, A., Carretero-Paulet, L.,**
25 **Portoles, S., Rodriguez-Concepcion, M. and Martinez-Garcia, J.F.**
26 (2007) Interaction of shade avoidance and auxin responses: a role for two
27 novel atypical bHLH proteins. *EMBO J*, **26**, 4756-4767.
- 28
29 **Rosler, J., Klein, I. and Zeidler, M.** (2007) Arabidopsis *fhl/fhy1* double mutant
30 reveals a distinct cytoplasmic action of phytochrome A. *Proc Natl Acad Sci*
31 *U S A*, **104**, 10737-10742.
- 32
33 **Salter, M.G., Franklin, K.A. and Whitelam, G.C.** (2003) Gating of the rapid
34 shade-avoidance response by the circadian clock in plants. *Nature*, **426**,
35 680-683.
- 36 **Sellaro, R., Crepy, M., Trupkin, S.A., Karayekov, E., Buchovsky, A.S., Rossi, C.**
37 **and Casal, J.J.** (2010) Cryptochrome as a sensor of the blue/green ratio of
38 natural radiation in Arabidopsis. *Plant Physiol*, **154**, 401-409.
- 39 **Sellaro, R., Pacin, M. and Casal, J.J.** (2012) Diurnal Dependence of Growth
40 Responses to Shade in Arabidopsis: Role of Hormone, Clock, and Light
41 Signaling. *Mol Plant*.
- 42
43 **Sessa, G., Carabelli, M., Sassi, M., Ciolfi, A., Possenti, M., Mittempergher, F.,**
44 **Becker, J., Morelli, G. and Ruberti, I.** (2005) A dynamic balance between
45 gene activation and repression regulates the shade avoidance response in
46 Arabidopsis. *Genes Dev*, **19**, 2811-2815.
- 47 **Shin, J., Kim, K., Kang, H., Zulfugarov, I.S., Bae, G., Lee, C.H., Lee, D. and Choi,**
48 **G.** (2009) Phytochromes promote seedling light responses by inhibiting
49 four negatively-acting phytochrome-interacting factors. *Proc Natl Acad Sci*
50 *U S A*, **106**, 7660-7665.
- 51
52 **Sorin, C., Salla-Martret, M., Bou-Torrent, J., Roig-Villanova, I. and Martinez-**
53 **Garcia, J.F.** (2009) ATHB4, a regulator of shade avoidance, modulates
54 hormone response in Arabidopsis seedlings. *Plant J*, **59**, 266-277.
- 55 **Stavang, J.A., Gallego-Bartolome, J., Gomez, M.D., Yoshida, S., Asami, T.,**
56 **Olsen, J.E., Garcia-Martinez, J.L., Alabadi, D. and Blazquez, M.A.** (2009)
57
58
59
60

- 1
2
3 Hormonal regulation of temperature-induced growth in Arabidopsis.
4 *Plant J*, **60**, 589-601.
- 5 **Steindler, C., Matteucci, A., Sessa, G., Weimar, T., Ohgishi, M., Aoyama, T.,**
6 **Morelli, G. and Ruberti, I.** (1999) Shade avoidance responses are
7 mediated by the ATHB-2 HD-zip protein, a negative regulator of gene
8 expression. *Development*, **126**, 4235-4245.
- 9
10 **Stepanova, A.N., Yun, J., Robles, L.M., Novak, O., He, W., Guo, H., Ljung, K. and**
11 **Alonso, J.M.** (2011) The Arabidopsis YUCCA1 Flavin Monooxygenase
12 Functions in the Indole-3-Pyruvic Acid Branch of Auxin Biosynthesis.
13 *Plant Cell*, **23**, 3961-3973.
- 14 **Tao, Y., Ferrer, J.L., Ljung, K., Pojer, F., Hong, F., Long, J.A., Li, L., Moreno, J.E.,**
15 **Bowman, M.E., Ivans, L.J., Cheng, Y., Lim, J., Zhao, Y., Ballare, C.L.,**
16 **Sandberg, G., Noel, J.P. and Chory, J.** (2008) Rapid synthesis of auxin via
17 a new tryptophan-dependent pathway is required for shade avoidance in
18 plants. *Cell*, **133**, 164-176.
- 19
20 **Vandenbussche, F., Pierik, R., Millenaar, F.F., Voesenek, L.A. and Van Der**
21 **Straeten, D.** (2005) Reaching out of the shade. *Curr Opin Plant Biol*, **8**,
22 462-468.
- 23
24 **Won, C., Shen, X., Mashiguchi, K., Zheng, Z., Dai, X., Cheng, Y., Kasahara, H.,**
25 **Kamiya, Y., Chory, J. and Zhao, Y.** (2011) Conversion of tryptophan to
26 indole-3-acetic acid by TRYPTOPHAN AMINOTRANSFERASES OF
27 ARABIDOPSIS and YUCCAs in Arabidopsis. *Proc Natl Acad Sci U S A*, **108**,
28 18518-18523.
- 29
30 **Yamashino, T., Matsushika, A., Fujimori, T., Sato, S., Kato, T., Tabata, S. and**
31 **Mizuno, T.** (2003) A Link between circadian-controlled bHLH factors and
32 the APRR1/TOC1 quintet in Arabidopsis thaliana. *Plant Cell Physiol*, **44**,
33 619-629.
- 34
35 **Zhang, T., Maruhnich, S.A. and Folta, K.M.** (2011) Green light induces shade
36 avoidance symptoms. *Plant Physiol*, **157**, 1528-1536.
- 37
38 **Zhang, Y., Liu, T., Meyer, C.A., Eeckhoutte, J., Johnson, D.S., Bernstein, B.E.,**
39 **Nusbaum, C., Myers, R.M., Brown, M., Li, W. and Liu, X.S.** (2008) Model-
40 based analysis of ChIP-Seq (MACS). *Genome Biol*, **9**, R137.
- 41
42 **Zhao, Y., Christensen, S.K., Fankhauser, C., Cashman, J.R., Cohen, J.D., Weigel,**
43 **D. and Chory, J.** (2001) A role for flavin monooxygenase-like enzymes in
44 auxin biosynthesis. *Science*, **291**, 306-309.
- 45
46
47
48
49
50
51
52
53
54
55
56
57
58
59
60

Figure legends

Figure 1: PIF5-HA preferentially binds to promoters containing E- and G-boxes.

(A) Sequence read distribution in the genomic region containing *PIL1*. Reads are enriched on top of G-boxes (green dot) located in the *PIL1* promoter. Tags mapping to the + and – strands are labeled in yellow and blue respectively. The *PIL1* coding sequence (CDS) is marked with a red bar.

(B) Distribution of PIF5-HA binding loci relative to the transcriptional start site. PIF5-HA binding sites, which map within CDSs, were plotted relative to 2.5 kb (horizontal bar). Only PIF5-HA binding sites assigned to one gene were considered.

(C) Percentage of PIF5-HA binding loci containing at least one G- or E-box. Note that loci containing a G-box may also contain additional E-boxes.

(D) Distribution of G-boxes within 200 bp sequence covered by peaks. The x-axis represents the relative distance in bp to the center of peaks.

Figure 2: The shade-induced expression of *PIL1* is dependent on G-boxes.

Seedlings were grown for 7 days in constant high R/FR before being transferred 5 hours to low R/FR or kept in high R/FR (control). Transgenic lines carrying *PILpro1::GUS* or *PIL1*pro::GUS* (*PIL1* promoter containing point mutations in all 3 G-boxes) were used.

(A) GUS staining of *PILpro1::GUS* and *PIL1*pro::GUS* lines.

(B) Quantification of *PILpro1::GUS* and *PIL1*pro::GUS* reporter gene activity using MUG assay. Results of two independent transgenic lines are presented. Data are means ± 2 SE from three biological replicas.

Figure 3: Identification of PIF4 and PIF5 binding sites *in vitro*.

(A) Position weight matrix representation of the first scoring 8-mers corresponding to PIF4 and PIF5.

(B) Enrichment scores (E-scores) of all the possible G-box-containing 8-mers for the two proteins tested.

(C) Box-plot of E-scores of G-box-related variants including both single-site mutations and E-boxes for PIF4 (blue) and PIF5 (green). Boxes represent quartiles 25% to 75%, and black line represents the median of the distribution (quartile 50%). Bars indicate quartiles 1 to 25% (above) and 75 to 100% (below), and dots denote outliers of the distribution.

(D) Box-plot of E-scores of G-box-related variants including both single-site mutations and E-boxes corresponding to HFR1, as in (C). HFR1 did not show significant binding to any of the elements represented in the PBM.

Figure 4: Genes displaying an altered regulation by a low R/FR treatment in *pif4pif5*.

(A) Hierarchical clustering of relative expression levels across all samples for 77 genes significantly (adj. P-value < 0.05) dependent on an interactive effect of the genotype (*pif4pif5* vs wild type) and the condition (low vs high R/FR ratio).

(B) Gene expression from the microarray experiment for a representative gene of group 1 and 2.

(C) Gene expression determined by RT-Q-PCR in response to 2 hours of low R/FR. Col, *pif4*, *pif5* and *pif4pif5* seedlings were grown 7 days in constant light conditions before being moved for 2 hours to low R/FR or kept in high R/FR.

1
2
3 Expression levels were normalized to *YLS8* and *UBC* and expressed relative to
4 the Col value in high R/FR. Error bars represent standard error to the mean of
5 three biological replicates.
6
7

8
9
10 **(D)** Chromatin Immunoprecipitation (ChIP) of PIF4-HA or PIF5-HA grown for 7
11 days in constant light followed by a 2 hour low R/FR treatment.
12 Immunoprecipitated DNA was quantified by Q-PCR using primers in the
13 promoter region containing a G-box or control region. Data are average of
14 technical triplicates of the Q-PCR. Error bars represent the S.D. calculated on the
15 Ct scale. Error bars are $2^{\text{mean} \pm \text{SD}}$. Data from one representative ChIP experiment
16 are shown.
17
18
19
20
21
22
23
24
25
26
27

28 **Figure 5. PIF4 and PIF5 are involved in responses to low light intensities.**

29
30 **(A)** Hierarchical clustering of genes differently expressed between *pif4pif5* and
31 Col-0 grown in high R/FR light.
32
33

34
35 **(B)** Hypocotyl length in constant white light. Seedlings were grown 4 days under
36 different constant white light conditions before hypocotyls were measured.
37 Representative seedlings are shown for Col and *pif4pif5* in the left panel. Data are
38 means \pm 2SE (n=23-30).
39
40
41
42

43
44 **(C)** Gene expression determined by RT-Q-PCR after 7 days growth in constant
45 low or high light intensity (40 or 130 $\mu\text{moles m}^{-2} \text{s}^{-1}$). Expression levels were
46 normalized to *YLS8* and *UBC* and expressed relative to the Col value in PAR 40.
47 Error bars represent standard error to the mean of three biological replicates.
48
49
50

51
52 **(D)** Chromatin Immunoprecipitation (ChIP) of PIF4 or PIF5 in high R/FR. Col,
53 *PIF4-HA* and *PIF5-HA* lines were grown for 7 days in constant light (40 μmoles
54 $\text{m}^{-2} \text{s}^{-1}$) immunoprecipitated DNA was quantified by Q-PCR using primers in the
55
56
57
58
59
60

1
2
3 promoter region containing a G-box (black bar) or control region (gray bar).
4
5 Data are average of technical triplicates of the Q-PCR. Error bars represent the
6
7 S.D. calculated on the Ct scale. Error bars are $2^{\text{mean} \pm \text{SD}}$. Data from one
8
9 representative ChIP experiment are shown.
10
11
12
13

14 **Figure 6: *pif4pif5* is affected in auxin accumulation in response to shade.**

15
16 WT, *pif4pif5* and *PIF5-HA* seedlings were grown 7 days in constant high R/FR
17
18 light. Free IAA was measured after 1 hour of high or low R/FR treatment. Data
19
20 are means +- 2SE (n=5).
21
22
23
24
25
26
27

28 **Figure 7: *pif4pif5* is affected for responses to the auxin analog, picloram.**

29
30 **(A)** Hypocotyl length in response to picloram of seedlings grown under PAR 40
31
32 $\mu\text{moles m}^{-2} \text{s}^{-1}$ or PAR 130 $\mu\text{moles m}^{-2} \text{s}^{-1}$. Seedlings were grown 4 days in
33
34 constant white light conditions (40 or 130 $\mu\text{moles m}^{-2} \text{s}^{-1}$) before being
35
36 transferred on plates containing different concentrations of picloram (PIC). They
37
38 were grown 4 more days in constant white light (40 or 130 $\mu\text{moles m}^{-2} \text{s}^{-1}$). Data
39
40 are means +- 2SE (n=36-43).
41
42

43 **(B)** Relative hypocotyl length of the data presented in panel (A), defined as the
44
45 hypocotyl length relative to growth in the absence of picloram for each genotype.
46
47

48 **(C)** Gene expression in response to picloram. Col and *pif4pif5* seedlings were
49
50 grown 7 days in constant white light (PAR= 40 or 130 $\mu\text{moles m}^{-2} \text{s}^{-1}$) before
51
52 being treated for 2 hours with 5 μM picloram (PIC) or moved under low R/FR
53
54 conditions (PAR=40 $\mu\text{E m}^{-2} \text{s}^{-1}$) for 2 hours. Expression levels determined by
55
56
57
58
59
60

1
2
3 RT-Q-PCR were normalized to *YLS8* and *UBC* and expressed relative to the Col
4
5 control grown in PAR $40 \mu \text{E m}^{-2} \text{s}^{-1}$ without picloram treatment (DMSO). Error
6
7 bars represent standard error to the mean of three biological replicates.
8
9
10
11
12
13
14
15
16
17
18
19
20
21
22
23
24
25
26
27
28
29
30
31
32
33
34
35
36
37
38
39
40
41
42
43
44
45
46
47
48
49
50
51
52
53
54
55
56
57
58
59
60

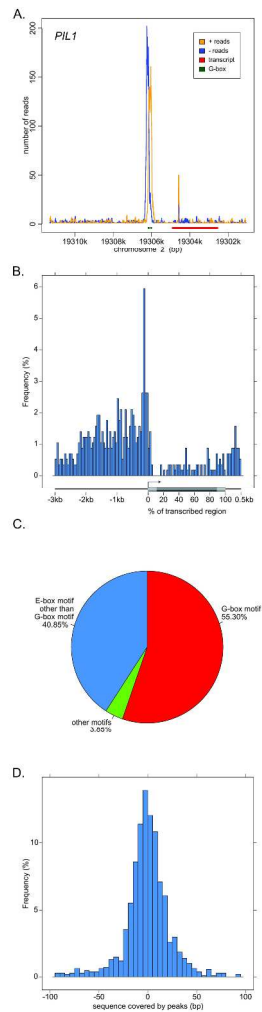


Figure 1: PIF5-HA preferentially binds to promoters containing E- and G-boxes.

(A) Sequence read distribution in the genomic region containing *PIL1*. Reads are enriched on top of G-boxes (indicated with a green dot) located in the *PIL1* promoter sequence. Tags mapping to the + and - strands are labeled in yellow and blue respectively. The *PIL1* coding sequence (CDS) is marked with a red bar.

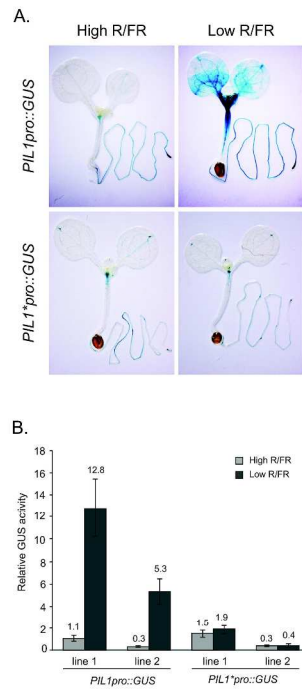
(B) Distribution of PIF5-HA binding loci relative to the transcriptional start site. PIF5-HA binding sites, which map within CDSs, were plotted relative to 2.5 kb (horizontal bar). Only PIF5-HA binding sites assigned to one gene were considered.

(C) Percentage of PIF5-HA binding loci containing at least one G- or E-box.

(D) Distribution of G-boxes within 200 bp sequence covered by peaks. The x-axis represents the relative distance in bp to the center of peaks.

1
2
3
4
5
6
7
8
9
10
11
12
13
14
15
16
17
18
19
20
21
22
23
24
25
26
27
28
29
30
31
32
33
34
35
36
37
38
39
40
41
42
43
44
45
46
47
48
49
50
51
52
53
54
55
56
57
58
59
60

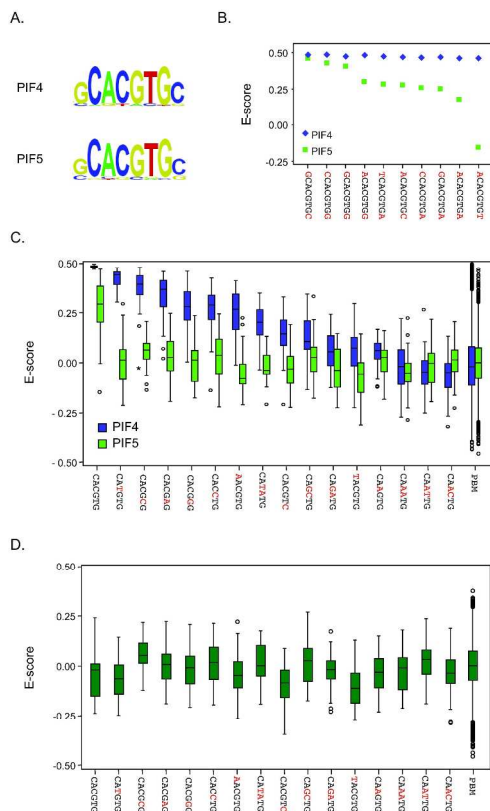
Figure 2

Figure 2: The shade-induced expression of *PIL1* is dependent on G-boxes.

Seedlings were grown for 7 days in constant high R/FR before being transferred 5 hours in low R/FR or kept in high R/FR as a control. Transgenic lines carrying *PIL1pro::GUS* (wild type version of the *PIL1* promoter) or *PIL1*pro::GUS* (*PIL1* promoter containing point mutations in all 3 G-boxes) were used.

(A) GUS staining of *PIL1pro::GUS* and *PIL1*pro::GUS* lines. Representative seedlings are shown. (B) Quantification of *PIL1pro::GUS* and *PIL1*pro::GUS* reporter gene activity using MUG assay. Results of two independent transgenic lines are presented. Data are means \pm 2 SE from three biological replicas.

Figure 3

Figure 3: Identification of PIF4 and PIF5 binding sites *in vitro*.

(A) Position weight matrix representation of the first scoring 8-mers corresponding to PIF4 and PIF5.

(B) Enrichment scores (E-scores) of all the possible G-box-containing 8-mers for the two proteins tested. PIF4 did not show particular 5'- and 3'-end preferences, whereas binding of PIF5 to DNA resulted highly dependent on G and C at both ends.

(C) Box-plot of E-scores of G-box-related variants including both single-site mutations and E-boxes. Boxes represent quartiles 25% to 75%, and black line represents the median of the distribution (quartile 50%). Bars indicate quartiles 1 to 25% (above) and 75 to 100% (below), and dots denote outliers of the distribution. Boxes in blue correspond to PIF4 and green ones correspond to data from PIF5. Binding of PIF5 to DNA was restricted to canonical G-boxes, whereas PIF4 showed intermediate affinities for other G-related variants.

(D) Box-plot of E-scores of G-box-related variants including both single-site mutations and E-boxes corresponding to HFR1, as in (C). HFR1 did not show significant binding to any of the elements represented in the PBM.

Figure 4

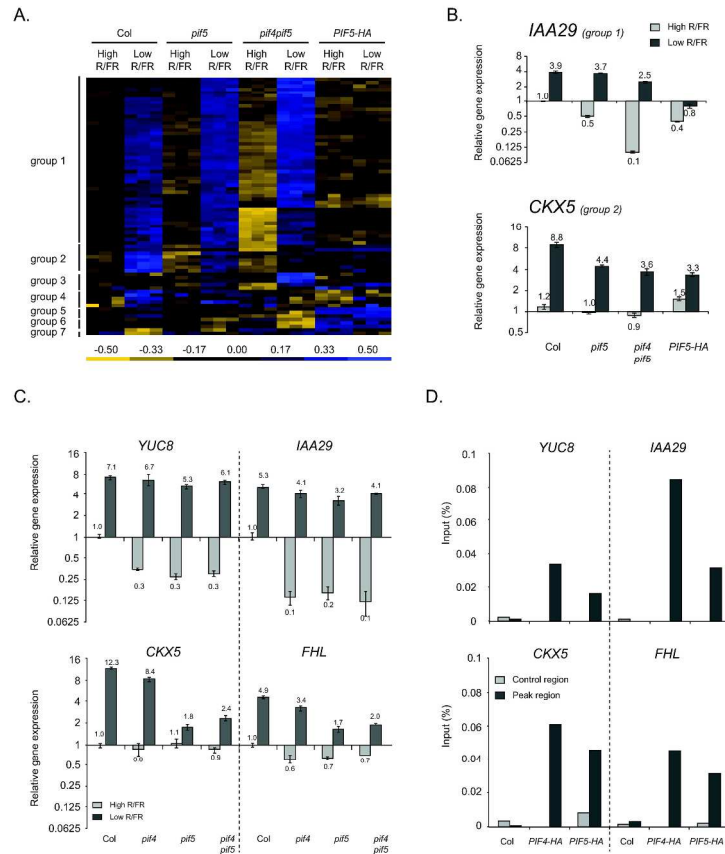


Figure 4: Genes displaying an altered regulation by a low R/FR treatment in *pit4pit5*.

(A) Hierarchical clustering of relative expression levels across all samples for 77 genes significantly (adj. P-value < 0.05) dependent on an interactive effect of the genotype (*pit4pit5* vs wild type) and the condition (low vs high R/FR ratio).

(B) Gene expression from the microarray experiment for a representative gene of group 1 and 2.

(C) Gene expression determined by RT-Q-PCR in response to 2 hours of low R/FR. Col, *pit4*, *pit5* and *pit4pit5* seedlings were grown 7 days in constant light conditions before being moved for 2 hours in low R/FR or kept in high R/FR. Expression levels were normalized to *YLS8* and *UBC* and expressed relative to the Col value in high R/FR. Error bars represent standard error to the mean of three biological replicates.

(D) Chromatin Immunoprecipitation (ChIP) of PIF4-HA or PIF5-HA after 2 hours in low R/FR. Col, PIF4-HA and PIF5-HA lines were grown for 7 days in constant light conditions before being shifted for 2 hours in low R/FR conditions. Immunoprecipitated DNA was quantified by Q-PCR using primers in the promoter region containing a G-box or control region (minimum 1 kb 3' or 5' from the peak region). Data are average of technical triplicates of the Q-PCR. Data from one representative ChIP experiment are shown.

Figure 5

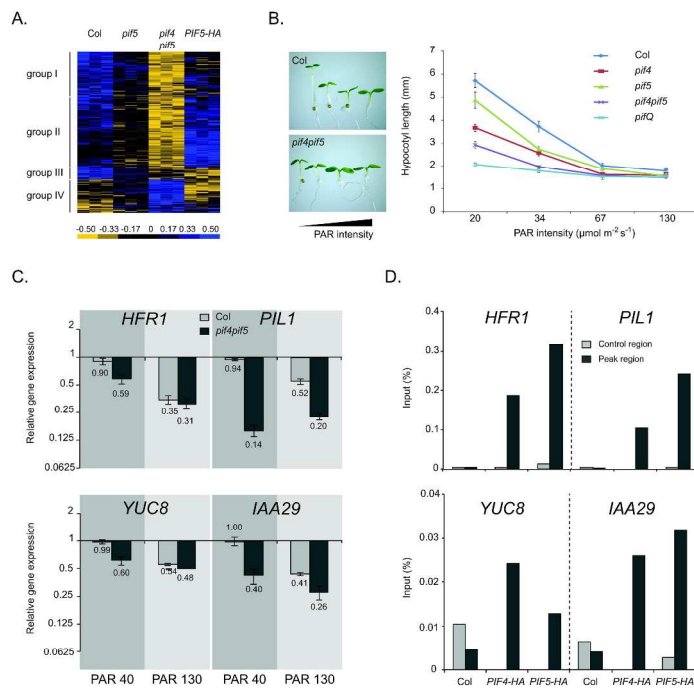


Figure 5. PIF4 and PIF5 are involved in responses to low light intensities.

(A) Hierarchical clustering of genes differently expressed between *pit4pit5* and Col-0 grown in high R/FR light.

(B) Hypocotyl length in constant white light. Seedlings were grown 4 days under different constant white light conditions before hypocotyls were measured. Representative seedlings are shown for Col and *pit4pit5* in the left panel. Data are means \pm 2SE (n=23-30).

(C) Gene expression determined by RT-Q-PCR after 7 days in constant low or high light intensities. WT and *pit4pit5* seedlings were grown under two constant light conditions (40 or 130 $\mu\text{moles m}^{-2} \text{s}^{-1}$). After 7 days, RNA was extracted and gene expression levels were analyzed by RT-Q-PCR. Expression levels were normalized to *YLS8* and *UBC* and expressed relative to the Col value in PAR 40. Error bars represent standard error to the mean of three biological replicates.

(D) Chromatin Immunoprecipitation (ChIP) of PIF4 or PIF5 in high R/FR. Col, *PIF4-HA* and *PIF5-HA* lines were grown for 7 days in constant light (40 $\mu\text{moles m}^{-2} \text{s}^{-1}$). Immunoprecipitated DNA was quantified by Q-PCR using primers in the promoter region containing a G-box (black bar) or control region (gray bar, minimum 1 kb 3' or 5' from the peak region). Data are average of technical triplicates of the Q-PCR. Data from one representative ChIP experiment are shown.

Figure 6

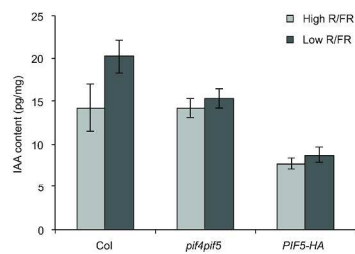
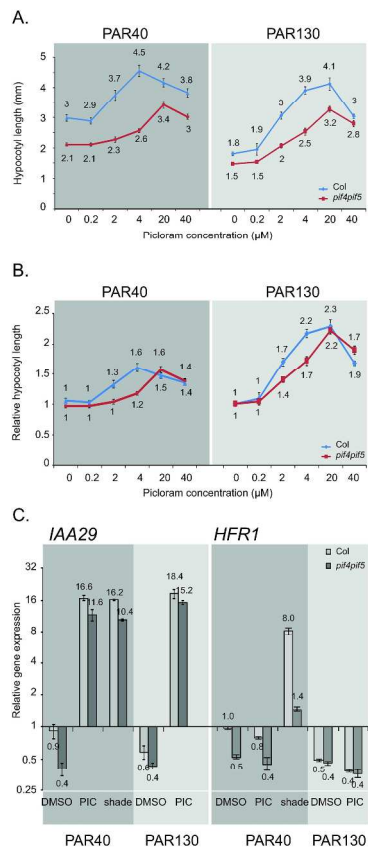


Figure 6: *pif4pif5* is affected in auxin accumulation in response to shade.

WT, *pif4pif5* and *PIF5-HA* seedlings were grown 7 days in constant high R/FR light. Free IAA was measured after 1 hour of high or low R/FR treatment.

Figure 7

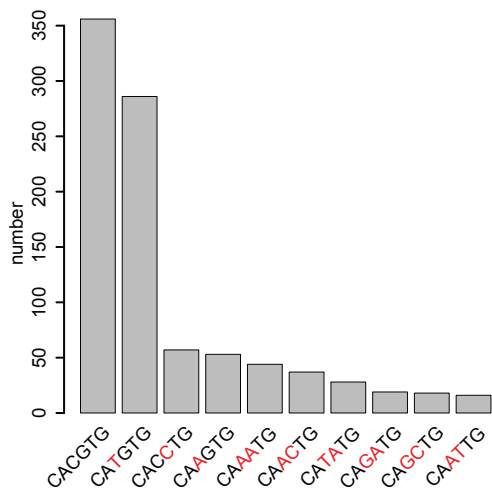
Figure 7: *pif4pif5* is affected for responses to the auxin analog, picloram

(A) Hypocotyl length in response to picloram of seedlings grown under PAR 40 $\mu\text{moles m}^{-2} \text{s}^{-1}$ or PAR 130 $\mu\text{moles m}^{-2} \text{s}^{-1}$. Seedlings were grown 4 days in constant white light conditions (40 or 130 $\mu\text{moles m}^{-2} \text{s}^{-1}$) before being transferred on plates containing different concentrations of picloram (PIC). They were then grown 4 more days in constant white light (40 or 130 $\mu\text{moles m}^{-2} \text{s}^{-1}$). Data are means \pm 2SE (n=36-43).

(B) Relative hypocotyl length of the data presented in panel (A), defined as the hypocotyl length relative to the control experiment (growth in the absence of picloram) for each genotype.

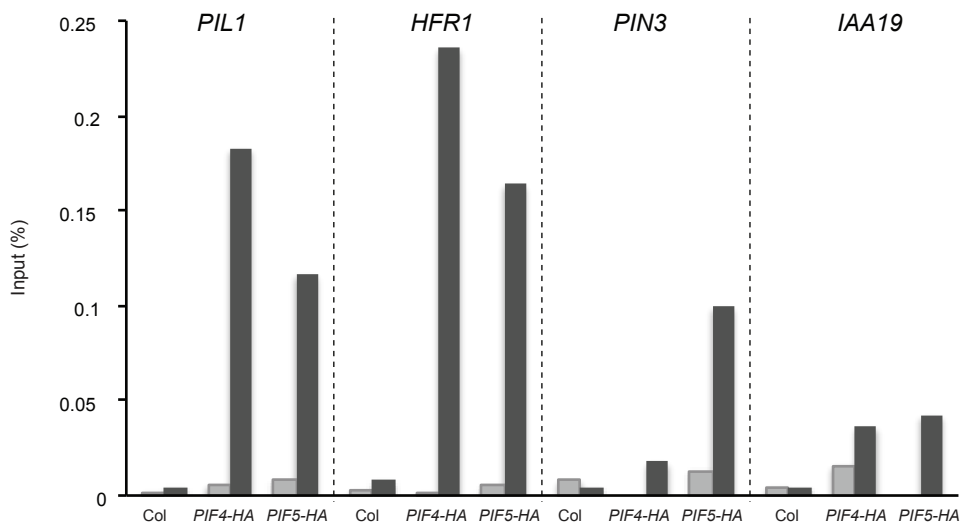
(C) Gene expression in response to picloram. Col and *pif4pif5* seedlings were grown 7 days in constant white light (PAR=40 or 130 $\mu\text{E m}^{-2} \text{s}^{-1}$) before being treated for 2 hours with 5 μM picloram (PIC) or moved under low RFR conditions (PAR=40 $\mu\text{E m}^{-2} \text{s}^{-1}$) for 2 hours. After RNA extraction, gene expressions were analyzed by RT-Q-PCR. Expression levels were normalized to *YLS8* and *UBC* and expressed relative to the Col control grown in PAR 40 $\mu\text{E m}^{-2} \text{s}^{-1}$ without picloram treatment (called DMSO). Error bars represent standard error to the mean of three biological replicates.

Figure S1

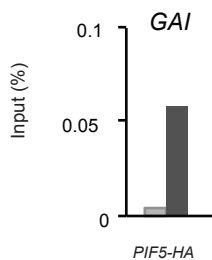


group name	nr.	complementary sequences
CACGTG	356	cacgtg; gtgcac
CATGTG	286	catgtg; gtacac; cacatg; gtgtac
CACCTG	57	cacctg; gtggac; caggtg; gtccac
CAAGTG	53	caagtg; gttcac; cacttg; gtgaac
CAAATG	44	caaatg; gtttac; catttg; gtaaac
CAACTG	37	caactg; gttgac; cagttg; gtcaac
CATATG	28	catatg; gtatac
CAGATG	19	cagatg; gtctac; catctg; gtagac
CAGCTG	18	cagctg; gtcgac
CAATTG	16	caattg; gttaac

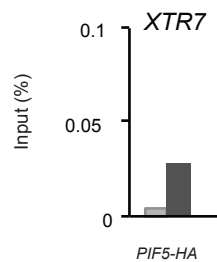
A.



B.



C.



Chromatin Immunoprecipitation (ChIP) of PIF5-HA after 2 hours in low R/FR. Immunoprecipitated DNA was quantified by Q-PCR using primers in the promoter region containing a G-box or control region (minimum 1 kb 3' or 5' from the peak region). Data are average of technical triplicates of the Q-PCR.

(A / B) Col and/or PIF5-HA lines were grown for 7 days in constant light conditions before being shifted for 2 hours in low R/FR conditions.

(C) PIF5-HA lines were grown for 14 days in constant light conditions before being shifted for 2 hours in low R/FR conditions.

Supplementary material Hornitschek et al.

Supplementary material and methods

Cloning procedure and generation of transgenic lines

Primers used in this study are listed in supplementary table 6. Fusions to the maltose-binding proteins (MBP) were generated by PCR. *HFR1*, *PIF4* and *PIF5* CDS were amplified respectively from the plasmids PH49, pCF402 and pCF404 using the primer pairs pPH153/154 (*HFR1*), pPH149/150 (*PIF4*) pPH151/152 (*PIF5*). Fragments were cloned *NotI/XhoI* into pMAL-c2 TEV V5. The promoter region from *PIL1* and *PIL1** were described previously in (Hornitschek et al., 2009). They were inserted into the pCB308 binary vector using *EcoRI* and *BamHI* sites. To generate the *PIF4pro:PIF4-citrine-3HA* (*PIF4-HA*) line, the *PIF4-3HA* CDS was amplified from the plasmid pCF402 (Lorrain *et al.* 2008) with the primers SL131 and SL135 and digested by *NheI* and *XhoI*. The digestion product was introduced into the pCF300 binary vector with the *BamHI-NheI* digested *PIF4pro* previously described to generate pAM02 (*PIF4pro:PIF4-3HA*). The citrine coding region was amplified by PCR using the primers SL136 and SL137, digested with *Sall* and *XhoI* and introduced into the *Sall*-digested pAM02 vector to generate the pSL90 vector (*PIF4pro:PIF4-citrine-3HA*). This construct was introduced in the *pif4-101* mutant background plants by the *Agrobacterium tumefaciens* dipping procedure.

GUS staining and MUG assay

Seedlings were grown for 7 days in constant light (high R/FR) and then either kept in high R/FR or shifted to low R/FR for the indicated times. For the GUS staining, seedlings were incubated at 37°C for 6 hours within a buffer containing 2mM 5-bromo-4-chloro-3-indolyl β -D-glucuronide (X-Gluc, Duchefa Biochimie BV), 2mM ferrocyanide, 2mM potassium ferricyanide and 50mM sodium phosphate. Stained seedlings were washed with 100% ethanol over night and then rinsed with 70% ethanol. Seedlings were observed and photographed with the stereomicroscope Nikon SMZ 1500. Biological triplicates were performed for each treatment of the MUG assay (4-methylumbelliferyl-beta-D-glucuronide). Seedlings were ground in liquid nitrogen, homogenized on ice in a buffer containing 25mM Tris (pH 7.8), 2mM EDTA, 2mM DTT, 10% glycerol, and 1% Triton X-100, and cleared by centrifugation at 12,000g for 5 min. The extract (25 μ l) was incubated with 500 μ l MUG assay buffer (50mM NaPO₄ pH7, 1mM MUG, 10mM EDTA, 10mM β -mercaptoethanol, 0.1% sarkosyl, 0.1% Triton X-100) at 37°C for 2 hours. The reaction was stopped by adding 450 μ l of 0.2M Na₂CO₃.

ChIP sequencing

The ChIP experiment was performed as described in (Hornitschek *et al.* 2009)). The forward and the reverse primer pairs to amplify the peak and the control region are provided in supplemental S6. For the ChIP-Seq experiment 300 mg of seeds were plated on ½ strength MS. UTH-sequencing of the ChIP samples were performed at the Lausanne Genomics Technologies Facility (GTF) (http://www.unil.ch/cig/page7861_en.html). For ChIP-Seq analysis 145 bp

(PIF5-HA ChIP sample) and 166 bp (input DNA control) fragments were used to generate 37 bp or 40 bp reads, respectively. The software Bowtie version 0.12.7 (bowtie -S -n 3 --best --strata --solexa1.3-quals -a -m 1) (Langmead *et al.* 2009) was used to map sequence reads to the Arabidopsis genome (TAIR8; www.arabidopsis.org). 8.6 million (for the IP sample) and 26.4 million (for the input sample) uniquely mapping reads were selected and sequence read enrichments were identified with Model-based Analysis of ChIP-Seq (MACS) version 1.4.0alpha2 (-p 1e-7 -slocal 500) (Zhang *et al.* 2008). Genome regions identified by MACS were analyzed with Mali Salmon's PeakSplitter software (version 0.1; -v 0.21; -c 20) to determine several peaks per sequence. Sequences covered by peaks were defined as 200 bp centered to the summit positions reported by MACS or PeakSplitter. Putative direct target genes were identified using a perl script of Vivian Praz (University of Lausanne), which compares the center of peaks with gene annotations. Peaks were assigned to genes if they located 3000 bp upstream, 500 bp downstream or within an annotated region. If several genes per peak fulfill the criteria, only the immediate neighboring genes up and downstream were assigned. Subsequent analyses were performed with R (version 2.12.2).

Supplementary Figure S1: PIF5 binds with different frequency to various E-box sequences in vivo. PIF5 binding sites that were assigned to a gene locus were chosen. For each binding site the most central E-box was detected. Sequences with two E-boxes with the same distance to the peak summit were discarded from the analysis. E-box sequences were then counted and sense and antisense sequences as well as their reverse complements were grouped.

Supplementary table 1. List of genes with a PIF5 peak identified by ChIP sequ in the *PIF5-HA* line transferred for 2 hours into low R/FR.

Supplementary table 2. Lists of GO analysis. Sheet a : GO analysis of genes set identified by PIF5-HA ChIP-seq; sheet b : GO analysis of genes showing a significant interaction between WT and *pif4pif5* when comparing gene expression in high versus low R/FR; sheet c: GO analysis of list and sublists for genes differentially expressed in high R/FR between WT and *pif4pif5*; sheet d: GO analysis of genes with close binding site for PIF5 and PIF1.

Supplementary table 3. List of genes showing an altered regulation of gene expression in *pif4pif5* when comparing seedlings grown in high versus low R/FR (interaction between the genetic backgrounds and environmental conditions).

Supplementary table 4. List of genes with altered expression in *pif4pif5* compared to wild-type seedlings grown in high R/FR.

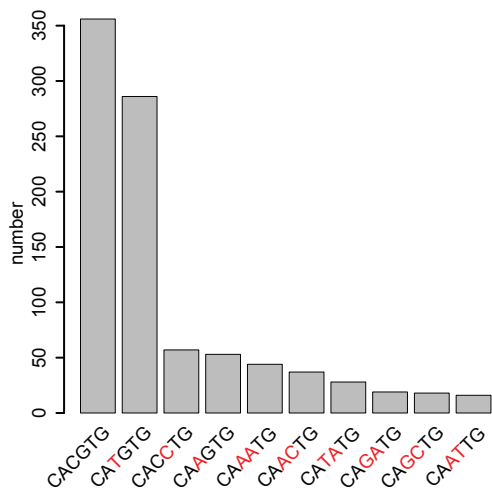
Supplementary table 5. Comparison between the genes we identified as requiring PIF4 and PIF5 for normal expression in high R/FR (Figure 5) and the genes whose expression correlates with growth and requires PIF4 and PIF5 identified by (Nozue *et al.* 2011).

Supplementary table 6. List of primers used in this study

Reference

- Hornitschek, P., Lorrain, S., Zoete, V., Michielin, O. and Fankhauser, C.** (2009) Inhibition of the shade avoidance response by formation of non-DNA binding bHLH heterodimers. *EMBO J*, **28**, 3893-3902.
- Langmead, B., Trapnell, C., Pop, M. and Salzberg, S.L.** (2009) Ultrafast and memory-efficient alignment of short DNA sequences to the human genome. *Genome Biol*, **10**, R25.
- Lorrain, S., Allen, T., Duek, P.D., Whitelam, G.C. and Fankhauser, C.** (2008) Phytochrome-mediated inhibition of shade avoidance involves degradation of growth-promoting bHLH transcription factors. *Plant J*, **53**, 312-323.
- Nozue, K., Harmer, S.L. and Maloof, J.N.** (2011) Genomic analysis of circadian clock-, light-, and growth-correlated genes reveals PHYTOCHROME-INTERACTING FACTOR5 as a modulator of auxin signaling in Arabidopsis. *Plant Physiol*, **156**, 357-372.
- Zhang, Y., Liu, T., Meyer, C.A., Eeckhoute, J., Johnson, D.S., Bernstein, B.E., Nusbaum, C., Myers, R.M., Brown, M., Li, W. and Liu, X.S.** (2008) Model-based analysis of ChIP-Seq (MACS). *Genome Biol*, **9**, R137.

Figure S1



group name	nr.	complementary sequences
CACGTG	356	cacgtg; gtgcac
CATGTG	286	catgtg; gtacac; cacatg; gtgtac
CACCTG	57	cacctg; gtggac; caggtg; gtccac
CAAGTG	53	caagtg; gttcac; cacttg; gtgaac
CAAATG	44	caaatg; gtttac; catttg; gtaaac
CAACTG	37	caactg; gttgac; cagttg; gtcaac
CATATG	28	catatg; gtatac
CAGATG	19	cagatg; gtctac; catctg; gtagac
CAGCTG	18	cagctg; gtcgac
CAATTG	16	caattg; gttaac