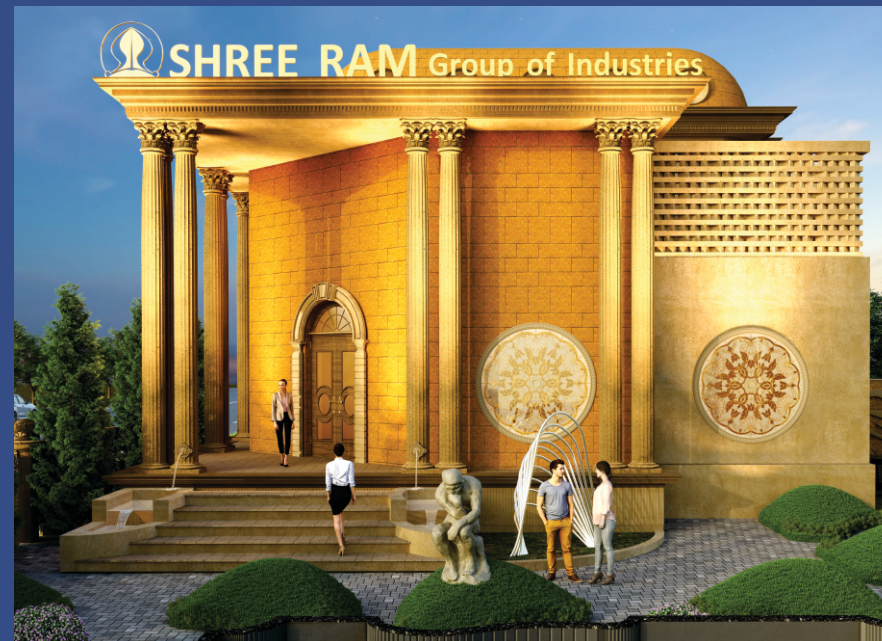




SHREE RAM

Group of Industries

AN ISO 9001:2015 CERTIFIED COMPANY

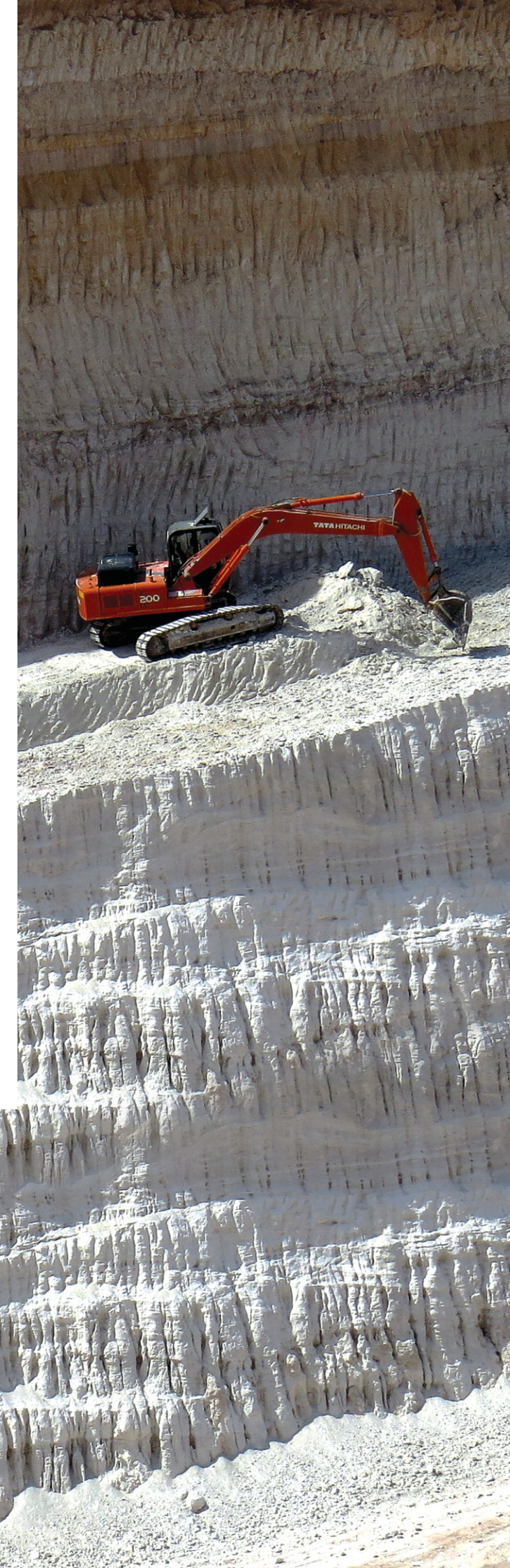


CONTACT DETAILS :
SHREE RAM GROUP OF INDUSTRIES
PLOT NO: 21 & 22, SURVEY NO: 317/1 & 317/2,
JUNAVAS MADHAPAR, TAL: BHUJ
DIST: KUTCH PIN: 370020 GUJARAT, INDIA.
CELL: +919925233580, +91 95740 08888
EMAIL: INFO@SHREERAMKAOLIN.COM
WEBSITE: WWW.SHREERAMKAOLIN.COM

THE MOST TRUSTED

www.shreeramkaolin.com

**MINES OWNER
SUPPLIER & EXPORTER
OF MINERALS IN THE INDIA**



ABOUT US



Shree Ram Group was established in the Kutch, Gujarat by Mr. P. D. Solanki in 1977. Because of his excellent knowledge of Research and Geology, he discovered high quality Kaolin Clay deposits in the Kutch district more than four decades ago. Later, Mr. Vinod P. Solanki had developed and diversified his family business. With a legacy of more than 40 years, Mr. Mohit V. Solanki is leading his business in the domestic and global market since 2007.

Shree Ram Group is one of the India's largest manufacturer, exporter and supplier of China Clay and its value-added products. Because of modern and fully equipped plant, we process various products under supervision of our quality assurance team. We are focused on product improvement and innovation with utmost possible accuracy.

Shree Ram Group is managed by qualified & experienced professional to provide specialized services to various sectors. Many of our employees are working with us since decades due to pleasure and satisfaction in the safe working environment. We ensure uninterrupted supply products to our valued clients even during the monsoon due to huge capacity of operation ability. We have modern fully functional in-house laboratory where we analyze right from mining raw material to finished products.

Message from Managing Director:

No compromise in ethics and honesty with sustainable growth of entire organization by giving best to society and nature.



MILE STONE

- 1977: started mining business by acquiring 100 hectares lease area from the Government
- 1983: started 1st China clay washing (processing) plant in the Kutch region
- 1983-2000: established market by developing new grades
- 2007: started six different manufacturing kaolin washing plant with the capacity of 6000 tons per month
- 2012: started silica processing plant with the capacity of 10000 tons per month
- 2014: started hydrous kaolin plant with the capacity of 1500 tons per month
- 2017: started calcined kaolin plant with largest rotary kiln in the India with the capacity of 3000 tons per month
- 2018: started fully automatic kaolin plant with HGMS and automatic filter press with the capacity of 8000 tons per month
- 2020: modified all plants equipped with ball mill, centrifuge decanter, hydro cyclone and filter press to achieve 25000 tons per month which is the highest production capacity in the India.
- 2022: started blended clay project having the capacity of 2500 tons per month customized product as per customer's requirement

RESEARCH & DEVELOPMENT

- Works constantly to improve its methods to offer new products and applications to clients.
- R & D team understand your industrial needs and production issues.
- Having all the testing facility of chemical, physical and particle size distribution with modern equipment in the inhouse laboratory.
- We work with you to establish the right product for the quality of your product.

OUR PRODUCTS

► CRUDE CHINA CLAY :

We are one of the India's largest suppliers of Crude China Clay having world class kaolin which is deposited in the 100 hectares of mining lease area in Nadapa village, Kutch. Our mining staffs take special care during excavating material from mines.



► LAVIGATED CHINA CLAY :

We have advanced washing plants which is capable of removing impurities such as silica, iron, titanium etc. Due to our advance washing system, we differentiate our material on the basis of whiteness and different parameters. All processing plants are located near to mining area.



APPLICATION :

- Sanitary Ware Body and Glaze
- Ceramic Engope, Glaze compounds and Frits
- Wall and floor tiles use as Engope and Glaze
- Vitrified tiles like double charge top and bottom, GVT compound, full body tiles, slab tiles etc
- As a Refractory raw material, Bricks and Castables
- High tension and low-tension insulators
- Bone China, Crockery and Porcelain
- Tableware and Stoneware



SPECIFICATION :

PARAMETERS	SR - 96 NOODLES	SR - 96 (M)	SR - 95 (M)	SR-95	SR - 94	SR - 92	SR - 90	1RL
PHYSICAL COMPOSITION								
Natural Appearance	Snow White	Snow White	Creamish	White	White	White	Creamish	Pinkish
Whiteness (%)	87 ± 1	88 ± 1	84 ± 1	84 ± 1	83 ± 1	79 ± 1	75 ± 1	60 ± 1
Residue on 325# (%)	0.5 Max	0.5 Max	0.5 Max	0.5 Max	1.0 Max	1.0 Max	2.0 Max	2.0 Max
L-Value	95 ± 0.5	96 ± 0.5	93 ± 0.5	94 ± 0.5	93 ± 0.5	92 ± 1.0	90 ± 1.0	83 ± 2.0
A-Value	0.52	0.1 - 0.3	0.97	0.84	0.84	1.61	1.39	3.31
B-Value	3.0 ± 0.5	3.0 ± 0.5	3.5 ± 0.5	4.0 ± 0.5	4.0 ± 0.5	4.0 ± 0.5	5.0 ± 0.5	6.0 ± 0.5
Shrinkage	5.5 ± 0.5	5.0 ± 0.5	6.0 ± 0.5	5.0 ± 0.5	5.5 ± 0.5	5.5 ± 0.5	7.0 ± 0.5	7.0 ± 0.5
Temperature (oC)	1220	1220	1220	1220	1220	1220	1220	1220
Cycle (Mins)	60	60	60	60	60	60	60	60
Water of Plasticity (%)	36 ± 1	38 ± 1	38 ± 1	37 ± 1	36 ± 1	38 ± 1	38 ± 1	38 ± 1
Water Absorption (%)	15.56	19.98	14.30	14.20	15.42	19.24	17.09	15.81
Dry MOR (Kg/cm2)	6.30	9.70	6.80	6.40	5.60	8.80	9.10	12.20
Fired MOR (Kg/cm3)	37.60	46.20	40.80	38.80	39.30	45.60	58.20	88.20
CHEMICAL COMPOSITION								
Loss of Ignition (%)	13 - 15	13 - 15	13 - 15	13 - 15	13 - 15	13 - 15	13 - 15	11 - 13
SiO2 (%)	45 ± 1	48 ± 1	48 ± 1	46 ± 1	47 ± 1	45 ± 1	46 ± 1	51 ± 1
Al2O3 (%)	39 ± 1	36 ± 1	36 ± 1	37 ± 1	37 ± 1	37 ± 1	36 ± 1	32 ± 2
Fe2O3 (%)	0.2 - 0.4	0.3 - 0.5	0.3 - 0.5	0.3 - 0.5	0.3 - 0.6	0.4 - 0.7	0.5 - 1.2	2.0 Max
TiO2 (%)	0.5 - 0.9	0.8 - 1.2	0.9 - 1.4	0.9 - 1.2	0.9 - 1.4	0.9 - 1.4	0.9 - 1.6	1.2 - 2.2
K2O (%)	0.047	0.19	0.20	0.21	0.035	0.067	0.083	0.210
Na2O (%)	0.048	0.21	0.24	0.27	0.051	0.0396	0.100	0.1400
CaO (%)	Trace	0.33	0.31	0.35	0.15	Trace	Trace	Trace
MgO (%)	0.097	0.30	0.32	0.31	0.107	0.109	0.170	0.290

► HYDROUS KAOLIN POWDER :

Shree Ram Group has fully automated machineries which controls brightness and particle size. It has low bulk density and light weight fine powder. It is used as extender, filler and additives in several industries such as fiber glass, detergent, fertilizer, ink, plastic, rubber, wire, cable, paint, paper and ceramics frits. We manufacture all above grades and also customize products as per customer's requirement.



► CALCINED KAOLIN POWDER :

Shree Ram Group supply qualitative and cost-effective Calcined Kaolin Powder in the domestic as well as global market. Due to our advanced processing unit, we assure to provide consistent quality, whiteness, and low specific gravity without any impurities at pocket friendly rates. We take special care during packaging so that we provide moisture free material to our valued clients.



► REFRACTORY CLAY :

Calcined clay or Refractory clay is obtained by calcining (heating) superior grade clay at high temperature (from 850 oC to 1600 oC). Due to this process, it removes moisture and volatiles as well as increase the alumina content. Calcined clay has higher an alumina content of 40% to 60% where as raw clay has an alumina content of 30% to 40%. The Calcination is carried out in rotary kilns at different temperatures ranging from 850 oC to 1600 oC depending upon the customer's application. It is used in high alumina bricks, castable and motar.



► BLENDED CLAY :

As per demand of global market, we manufacture blended clay as per customer's requirement and composition. The concept of new product development for our renowned customers and its requirement which is also known as customized product. We have developed new blended clay which has essential parameters such as high whiteness, high plasticity and high MOR.



► SILICA QUARTZ POWDER :

We manufacture snow white silica quartz powder having a purity of more than SiO2 99%. Our product has more than 90% whiteness and 95% L-value as well as available in 200mesh and 300mesh. Silica sand powder is used in ceramic applications such as body, engobe and glaze composition. It is also used in the paint, foundry and other industries.



► **SILICA SAND :**

Silica is the name given to a group of minerals composed of silicon and oxygen, the two most abundant elements in the earth's crust. Silica is found commonly in the crystalline state and rarely in an amorphous state. It is composed of one atom of silicon and two atoms of oxygen resulting in the chemical formula SiO₂. Sand consists of small grains or particles of mineral and rock fragments. We have advanced technology in our silica washing plants. We have both wet and dry process plants having proper sizing and diamagnetic system. We have high gross magnet in our plant to remove iron. We also maintain AFS system to produce foundry sand. We provide world's best silica sand especially suitable for glass industry due its pure white colour.



APPLICATION :

Glass Industries | Sodium Silicate Industries | Golf Courses & Sport ground | Ramming Mass Landscaping Road Marking Print Industries | G.R.C. & G. R. P. Industries | Ceramic Industries | Rubber & Paint Industries Foundry | Steel Industries | Filtration Media Construction Chemical Industries | Oil & Petroleum Industries

SPECIFICATION :

PARAMETERS	SRS - Premium	SRS - Spiral	SRS - Regular
SiO ₂	99.1% Min	99.0% Min	98.5% Min
Al ₂ O ₃	< 0.4%	< 0.4%	< 1.0%
Fe ₂ O ₃	< 0.018%	< 0.030%	< 0.04 - 0.06%
CaO	< 0.15%	< 0.15%	< 0.15%
TiO ₂	< 0.05%	< 0.06%	< 0.05%
Moisture	NIL	5%	NIL
Process	Dry	Wet & Dry	Dry
Grain Size	As per requirement	As per requirement	As per requirement

► **OUR ASSOCIATE FIRMS :**

1. M/S VINOD P SOLANKI.
2. SHREE RAM CHINA CLAY
3. SHREE RAM KAOLIN
4. SHREE RAM PROCESSOR
5. SHREE RAM WHITE CLAY
6. SHREE RAM SUPER CLAY
7. SHREE JAY SIYARAM MINERALS
8. SHREE RAM SILICA SAND
9. SHREE RAM MINTECH PRIVATE LIMITED.

► **OUR MAJOR CLIENTS FOR KAOLIN :**



► **OUR MAJOR CLIENTS FOR SILICA SAND :**



► **GLOBAL FOOT PRINT :**



MAJOR CLIENTS