



SHYAM
FUTURE TECH
ISO 9001:2015 | ISO 27001:2013



2023

PRODUCT CATALOG



From The House of



SHYAM STEEL

SHYAM TMT REBAR

**Unified Communications
& Networking Solutions**
For Businesses and Vertical Industries

Table of Contents

About SFT	3
About Grandstream	4
GRP Series Carrier-Grade IP Phones	5-10
GXP Series Basic, Mid-Range, High-End IP Phones	11-15
GXV Series Android IP Phones	17-20
WP Series Cordless IP Phones	21-23
DP Series DECT Cordless IP Phones	24-27
UCM Series IP PBXs	28-31
Video and Audio Conferencing Solutions	32-35
GUV Series Personal Collaboration Devices	36-38
GDS Series Facility Access Solutions	39-42
Facility Management & Security Solutions	43-46
GWN Series Wi-Fi Solutions	47-52
HT Series Analog Telephone Adapters	54-57
GXW Series VoIP Gateways	58-60
Grandstream Device Management System	61

Company Overview

Shyam Future Tech Pvt. Ltd. is a renowned Global Telecom service provider working on the platform of IP and VoIP. We are working with our technology partners like **Akuvox, CyberData, Epygi, Grandstream, Guardian Telecom, Milesight, Planet, Tonmind, Wi-Tek and Yeastar** who support us in offering innovative products and solutions for the premise or Cloud-based requirements.

Vision

The company is aimed to work on the VOIP technology in a highly affordable and innovative manner. Our main vision is to allow the success & satisfaction of our employees, partners and customers who are connected with us by using our Products & Solutions.

We pull our deep expertise and profound appreciative of client's business province areas and needs to create a personalized solution for their individual business requirements.

We Work & Play with transparency, trust & team work, We feel proud on everything we do and make sure that everyone who is connected with us feel the same.

Recognized for the disciplined approach towards offering the best value of pleasure to every customer, we shake hand with!

Our Customers



Why Choose Us ?

Clients

Cohesive Technologies has more than thousands of customers, starting from individual households to counting some large multi-national organizations. If you are attracted in speaking to any of the clients in order to have a referral, it can be arranged.

Top Market Technology

The service merges market top leading technology. We can offer the best, reliable technology and modify it to your business right away.

Full Solution Centre

The company can help you with not just with the telephony, but also the connectivity and network infrastructure as well.

Consultancy

Cohesive Technologies offers a Consultancy and Demo of our Product & Services permitting you to experience it earlier to making your choice. The trial comprises the full support, understanding your Problem and guiding with right Solution.

Technology Partners



Awards Recognition



Product Portfolio



About Grandstream



Overview

Grandstream has been connecting the world since 2002 with communications products and solutions that allow businesses to be more productive than ever before. Our award-winning solutions serve the small-to-medium business, service provider and enterprise markets and have been recognized throughout the world for their quality, reliability and innovation. Grandstream solutions are used in over 150 countries because they lower communication costs, increase security protection and enhance productivity. Our open standard SIP-based products offer broad interoperability throughout the industry, along with unrivaled features and flexibility.

Corporate Structure

Privately held with over 500 employees worldwide and profitable with strong 2-digit compound annual growth rate in sales since 2002.

Mission Statement

We believe in connecting the world. We believe every business, large or small, should have the tools to communicate from anywhere on any device, and we design products that make this belief a reality.

Competitive Advantages

- Comprehensive portfolio of UC, VoIP, networking & facility management solutions - build a full solution all under the Grandstream brand
- One of the original SIP manufacturers - unrivaled expertise, quality and reliability as a result
- Open-source, zero-configuration plug-and-play technology for easy deployment and broad interoperability with SIP products and services
- State-of-the-art voice and video algorithms for crystal clear audio and video communications

Corporate Offices

1. Boston, MA (HQ), USA
2. Dallas, TX, USA
3. Los Angeles, CA, USA
4. Valencia, Venezuela*
5. Casablanca, Morocco
6. Shenzhen, China*
7. Hangzhou, China*
8. Selangor, Malaysia*
9. Madrid, Spain*

*offices of Grandstream's local partner companies which are business entities not affiliated with Grandstream Networks, Inc.

Awards Recognition



Product Portfolio



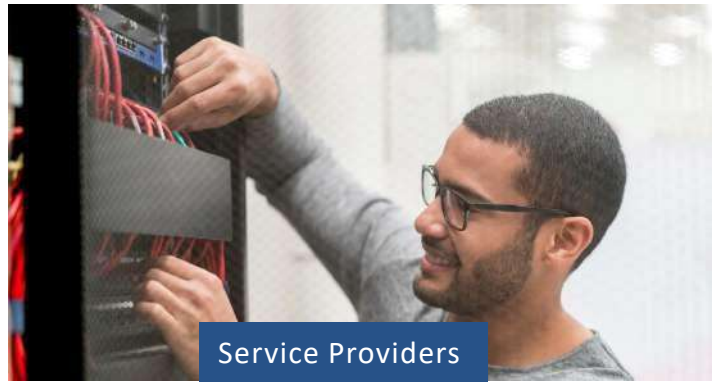


GRP Series Carrier-Grade IP Phones



The GRP2600 Series are carrier-grade IP phones designed for mass deployment. This series of next-generation IP phones features a sleek new design, a reimagined user experience, unified firmware and powerful feature options. Designed for enterprises, service providers and other high-volume markets, the GRP Series offers a powerful, easy-to-use and easy-to-deploy voice platform with next-gen features for high-end users.

Common Deployments



Key Features



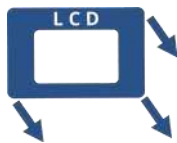
Integrated dual-band Wi-Fi



Built-in Bluetooth for headsets, data exchange & more



A variety of digital multi-purpose keys



Customizable faceplates



Secure boot, dual firmware, encrypted Data storage



GDMS
Cloud management with GDMS

Made for Easy Management and Mass Deployment



The GRP Series was designed for mass deployments. It provides zero touch provisioning and easy cloud management with GDMS, offer unified firmware across the entire line, and feature swappable faceplates for easy logo customization. By adding a suite of next-gen features, the GRP Series is ideal for enterprises, service providers and other large deployments.



[Product Datasheet](#)

GRP2670 - 12-Line Professional IP Phone

12 lines, 6 SIP accounts
7-inch LCD color touch screen
Dual switched auto-sensing 10/100/1000 Mbps Gigabit Ethernet/ integrated PoE
Integrated Bluetooth
Full duplex speakerphone with HD audio
Noise shield technology to minimize background noise
5-way audio conferencing
Swappable faceplate to allow for easy logo customization
Integrated dual-band Wi-Fi 802.11 a/b/g/n/ac (2.4Ghz & 5Ghz)
Zero-touch provisioning using Grandstream Device Management System



[Product Datasheet](#)

GRP2650 - 14-Line Professional IP Phone

14 lines, 6 SIP accounts
Full-duplex speakerphone with HD audio
Equipped with noise shield technology to minimize background noise
Dual switched autosensing 10/100/1000 Mbps Gigabit Ethernet/integrated PoE
Supports 5-way audio conferencing for easy conference calls
Swappable faceplate to allow for easy logo customization
Integrated dual-band Wi-Fi 802.11 a/b/g/n/ac (2.4Ghz & 5Ghz)



[Product Datasheet](#)

GRP2634 - 8-Line Professional IP Phone

8 lines, 4 SIP accounts
Dual switched auto-sensing 10/100/1000 Mbps Gigabit Ethernet / Integrated PoE
Integrated Bluetooth
10 built-in BLF keys
Full-duplex speakerphone with HD audio
Noise shield technology to minimize background noise
5-way audio conferencing
Swappable faceplate
Integrated dual-band Wi-Fi 802.11 a/b/g/n/ac (2.4Ghz & 5Ghz)
RJ9 headset jack allowing EHS and integrated USB headset support
Integrated Bluetooth



[Product Datasheet](#)

GRP2624 - 8-Line Professional IP Phone

8 lines, 4 SIP accounts
Dual switched auto-sensing 10/100/1000 Mbps Gigabit Ethernet / Integrated PoE
Integrated Bluetooth
Full-duplex speakerphone with HD audio
Noise shield technology to minimize background noise
5-way audio conferencing
Swappable faceplate to allow for easy logo customization
Integrated dual-band Wi-Fi 802.11 a/b/g/n/ac (2.4Ghz & 5Ghz)
Zero touch provisioning using Grandstream Device Management System (GDMS)



[Product Datasheet](#)

GRP2616 - 6-line Professional IP Phone

6 SIP accounts, 6 lines
 48 built-in digital BLF keys
 Dual LCDs (4.3 inch, 480x272 color LCD and 2.4 inch, 240x320 second screen)
 Secure boot, dual firmware images, and encrypted data storage
 Integrated dual-band 802.11 a/b/g/n Wi-Fi
 Dual switched auto-sensing Gigabit ports with integrated PoE
 Swappable faceplates to allow for easy logo customization
 Integrated Bluetooth
 Zero touch provisioning using Grandstream Device Management System (GDMS)



[Product Datasheet](#)

GRP2615 - 10-line Professional IP Phone

5 SIP accounts, 10 lines
 40 built-in digital BLF keys
 4.3 inch color LCD screen
 Secure boot, dual firmware images, and encrypted data storage
 Integrated dual-band 802.11 a/b/g/n Wi-Fi
 Dual switched auto-sensing Gigabit ports with integrated PoE
 Swappable faceplates to allow for easy logo customization
 Integrated Bluetooth
 Zero touch provisioning using Grandstream Device Management System (GDMS)
 Supports up to 4 GBX20 Extension Modules for speed-dial access to 160 contacts



[Product Datasheet](#)

GRP2614 - 4-line Professional IP Phone

4 SIP accounts, 4 lines
 40 built-in digital BLF keys
 Dual LCDs (2.8 inch, 320x402 color LCD and 2.4 inch, 240x320 second screen)
 Secure boot, dual firmware images, and encrypted data storage
 Integrated dual-band 802.11 a/b/g/n Wi-Fi
 Dual switched auto-sensing Gigabit ports with integrated PoE
 Swappable faceplates to allow for easy logo customization
 Integrated Bluetooth
 Zero touch provisioning using Grandstream Device Management System (GDMS)



[Product Datasheet](#)

GRP2613 - 3-line Professional IP Phone

3 SIP accounts, 6 line keys
 24 digital BLF keys
 Secure boot, dual firmware images, and encrypted data storage
 Dual switched auto-sensing Gigabit ports with integrated PoE
 Swappable faceplates to allow for easy logo customization
 Zero touch provisioning using Grandstream Device Management System (GDMS)



[Product Datasheet](#)

GRP2612 (P/W/G) - 2-Line Professional IP Phone

2 SIP accounts, 4 line keys
2.4 inch color LCD
16 built-in digital BLF keys
Secure boot, dual firmware images, and encrypted data storage
GRP2612W: Integrated dual-band 802.11 a/b/g/n Wi-Fi Dual switched 10/100MB ports
PoE available on GRP2612 & GRP2612W
Swappable faceplates to allow for easy logo customization
Zero touch provisioning using Grandstream Device Management System (GDMS)
Dual switched auto-sensing Gigabit Ethernet ports/integrated PoE (GRP2612G)



[Product Datasheet](#)

GBX20 - Extension Module

Connects to GRP2615 Carrier-Grade IP Phone, GRP 2624 Professional IP Phone and GXV3350 Video IP Phone
40 extensions per module with 2 page switch keys (20 per page)
Daisy chain up to 4 models for a total of 160 extensions
4.3 inch (272x480) TFT color LCD
Local GUI: Multiple line/call appearances



[Product Datasheet](#)

GRP2604 (P) - 3-Line Essential IP Phone

3 lines, 6 SIP accounts, up to 3 call appearances
Zero touch provisioning using Grandstream Device Management System (GDMS)
Electronic Hook Switch (EHS) support
10 built-in BLF keys
Full-duplex speakerphone with HD audio
Noise shield technology
5-way audio conferencing
Swappable faceplate to allow for easy logo customization
Dual switched autosensing 10/100/1000 Mbps Gigabit Ethernet ports with



[Product Datasheet](#)

GRP2603 (P) - 3-Line Essential IP Phone

3 lines, 6 SIP accounts, up to 3 call appearances
Zero touch provisioning using Grandstream Device Management System (GDMS)
Electronic Hook Switch (EHS) support
Full-duplex speakerphone with HD audio
Noise shield technology
5-way audio conferencing
Swappable faceplate to allow for easy logo customization
Dual switched autosensing 10/100/1000 Mbps Gigabit Ethernet ports with integrated PoE (GRP2603P only)



[Product Datasheet](#)

GRP2602 (P/W/G) - 2-Line Essential IP Phone

2 lines, 4 SIP accounts
Zero touch provisioning using Grandstream Device Management System (GDMS)
Electronic Hook Switch (EHS) support
Full-duplex speakerphone with HD audio to maximize audio quality and clarity
Noise shield technology to minimize background noise
GRP2602P includes built-in PoE
5-way audio conferencing for easy conference calls Swappable faceplate to allow for easy logo customization GRP2602W includes built-in dual-band Wi-Fi support
Dual switched auto-negotiation 10/100/1000 Mbps Ethernet ports,integrated PoE (GRP2602G only)



[Product Datasheet](#)

GRP2601 (P) - 2-Line Essential IP Phone

2 SIP accounts, 2 lines
Zero touch provisioning using Grandstream Device Management System (GDMS)
5-way audio conferencing for easy conference calls
Noise shield technology to minimize background noise
Electronic Hook Switch (EHS) support
GRP2601P includes built-in PoE
Secure boot, dual firmware images, and encrypted data storage



GXP Series

Basic & High-End IP Phones



The GXP Series offers a wide-range of IP phone models to provide the ideal option for every user and need. The GXP1600 Series offers simple-to-use devices for basic requirements, the GXP1700 Series offers mid-range devices that businesses can grow with, and the GXP2100 Series provides high-end devices for those who handle high call volumes

Common Deployments



SMB



Call Centers



Hospitality



Retail Shops

Key Features



HD audio & full-duplex speakerphones



Built-in Bluetooth for headsets, data exchange & more



A variety of digital BLF keys and EXT modules



Gigabit ports on Most models



Built-in PoE on Most models



Cloud management with GDMS*

* except GXP1600 series

The Ideal Model for Every User



With over 15 different models, the GXP Series has the ideal device for every user and deployment scenario. GXP1600 Series are ideal for basic VoIP needs, the GXP1700 Series offers devices that can grow with a business, and the GXP2100 Series are ideal for users who handle high call volumes and need advanced features.

High-End IP Phones



[Product Datasheet](#)

GXP2170 - 12-line High-End IPPhone

6 SIP accounts, 12 lines 5-way voice conferencing
48 on-screen digitally customizable BLF/speed-dial keys
4.3 inch (480x272) color-screen LCD Dual Gigabit ports, integrated PoE Integrated Bluetooth
Supports up to four GXP2200EXT for BLF/speed-dial access to up to 160 contacts



[Product Datasheet](#)

GXP2160 - 6-line High-End IPPhone

6 SIP accounts, 6 lines
5-way voice conferencing
24 BLF/speed-dial keys
4.3 inch (480x272) color-screen LCD
Dual Gigabit ports, integrated PoE
Integrated Bluetooth



[Product Datasheet](#)

GXP2140 - 4-line High-End IPPhone

4 SIP accounts 4 lines
5-way voice conferencing
4.3 inch (480x272) color-screen LCD
Dual Gigabit ports, integrated PoE
Integrated Bluetooth
Supports up to four GXP2200EXT for BLF/speed-dial access to up to 160 contacts



[Product Datasheet](#)

GXP2135 - 8-line High-End IPPhone

4 SIP accounts, 8 lines
4-way voice conferencing
32 on-screen digitally customizable BLF/speed-dial keys
2.8 inch (320 x 240) color-screen LCD
Dual Gigabit ports, integrated PoE
Integrated Bluetooth



[Product Datasheet](#)

GXP2130 v2 - 3-line High-End IP Phone

3 SIP accounts, 3 lines
4-way voice conferencing
8 BLF/speed-dial keys
2.8 inch (320 x 240) color-screen LCD
Dual Gigabit ports, integrated PoE
Integrated Bluetooth



[Product Datasheet](#)

GXP2200EXT - Expansion Module

Connects to GXP2170 & GXP2140 IP Phones and GXV3240 Video IP Phone
40 extensions per module with 2 page switch keys
Daisy chain up to 4 models for a total of 160 extensions (20 per page)
128 x 384 graphic LCD display
Local GUI: Multiple line/call appearances

Basic IP Phones



[Product Datasheet](#)

GXP1630 - 3-line Basic IP Phone

3 SIP accounts, 3 lines
4-way voice conferencing
8 dual-colored customizable BLF/speed-dial keys
132x64 (2.98") backlit LCD screen
Dual-switched Gigabit ports, Integrated PoE HD audio and full-duplex speakerphone



[Product Datasheet](#)

GXP1628 - 2-line Basic IP Phone

2 SIP accounts, 2 lines
3-way voice conferencing
8 dual-colored customizable BLF/speed-dial keys
132 x 48 (2.95") backlit LCD display
Dual-switched Gigabit ports, integrated PoE
HD audio and full-duplex speakerphone



[Product Datasheet](#)

GXP1620/1625 - 2-line Basic IP Phone

2 SIP accounts, 2 lines
3-way voice conferencing
132 x 48 (2.95") backlit LCD display
Dual 10/100Mbps ports, integrated PoE (GXP1625 only)
HD audio and full-duplex speakerphone



[Product Datasheet](#)

GXP1610/1615 - 2-line Basic IP Phone

1 SIP account, 2 call appearances
3-way voice conferencing
132 x 48 (2.95") LCD display
Dual 10/100Mbps ports, Integrated PoE (GXP1615 only)
HD audio and full-duplex speakerphone



GHP Series Compact Hotel Phones

Coming Soon



The GHP series of hotel phones features the GHP620(W) and the GHP621(W), easy-to-use IP phones for any hotel room that can be programmed and customized based on the needs of the hotel and their guests.

These devices feature Wi-Fi adjacent models that come equipped with integrated dual-band Wi-Fi (GHP620W/GHP621W). The GHP series features of the series includes; one HD speaker on each handset, 2 SIP accounts/lines, 6 programmable keys, 10 speed dial keys, 3-way voice conferencing, full band Opus voice codec, and advanced jitter-resilience algorithm that tolerates up to 30% packet loss without impacting voice quality.



GXV Series Android™ IP Video Phones



The GXV Series offers a powerful desktop productivity tool by combining a powerful IP phone with a flexible video collaboration solution and the functionality of an Android tablet. These devices run on the Android operating system, offering full access to the eco-system of Android apps and Google services.

Common Deployments



Enterprises



Facility Managers



Hospitality



Tele-health

Key Features



Runs the Android 7.x operating system



Built-in cameras & HDMI in/out support up to 1080p HD



Integrated dual-band Wi-Fi



Built-in Bluetooth for headsets & data exchange



Touch Screens on All models



Cloud management with GDMS

A Powerful & Customizable Productivity Engine



The GXV Series is a one-of-a-kind desktop productivity engine that combines a 16 line IP phone, a multi-platform video collaboration tool and an Android tablet. They can turn any area into a video collaboration space with support for most Android apps and SIP platforms, built-in cameras and HDMI output/input. Also, by utilizing our SDK kit along with Android's API, you can create custom Android apps to run on the GXV series.



[Product Datasheet](#)

GXV3380

16 lines, 16 SIP accounts
Runs on the Android 7.x operating system Built-in Bluetooth
Built-in 2 megapixel camera for video calling with privacy wheel
Integrated dualband Wi-Fi
8" (1280x800) capacitive 10-point touch screen IPS LCD
7-way HD audio conferencing & 3-way 1080p 30fps HD video capability 64-bit quad-core processor, 2GB RAM, and 16GB Flash



[Product Datasheet](#)

GXV3370

16 lines, 16 SIP accounts
Runs on the Android 7.x operating system
Built-in Bluetooth
Built-in megapixel camera for video calling with privacy wheel
Integrated dualband Wi-Fi
7" (1024x600) capacitive 5-point touch screen TFT LCD
7-way audio conferencing & 3-way 720p 30fps HD video conferencing capability
4-core 1.3GHz ARM Cortex A53 processor with 2GB RAM and 8GB eMMC Flash



[Product Datasheet](#)

GXV3350

16 lines, 16 SIP accounts
Runs on the Android 7.x operating system
Built-in Bluetooth
Built-in 1 mega-pixel CMOS tiltable camera for video calling with privacy wheel
Integrated dualband Wi-Fi
5.0" (1280x720) capacitive 5-point touch screen HD TFT LCD
6-way audio conferencing & 3-way 720p 30fps HD video conferencing capability
4-core 1.3GHz ARM Cortex A53 processor with 2GB RAM and 8GB eMMC Flash
Compatible with GBX20 Extension Module



[Product Datasheet](#)

GXV3480

Runs on Android 11 OS
Built-in 2-megapixel camera with privacy shutter
8-inch touch screen (1280x800)
Integrated dual-band Wi-Fi 6 support
Built-in Bluetooth 5.0 for headsets & mobile devices
HDMI input and output
Dual Mic with HD speakerphone and Noise-Shield 2.0 Technology
12-way audio conferences, 3-way 1080p HD video meetings
16 lines, 16 SIP accounts, PoE



[Coming Soon](#)

GXV3470

Runs on Android 11 OS
Built-in 2-megapixel camera with privacy shutter
7-inch vertical touch screen (1280x800)
Integrated dual-band Wi-Fi 6 support
Built-in Bluetooth 5.0 for headsets & mobile devices
HDMI input and output
Dual Mic with HD speakerphone and Noise-Shield 2.0 Technology
10-way audio conferences, 3-way 720p HD video meetings
16 lines, 16 SIP accounts, PoE



[Coming Soon](#)

GXV3450

Runs on Android 11 OS
Built-in 2-megapixel camera with privacy shutter
5-inch touch screen (1280x720)
Integrated dual-band Wi-Fi support
Built-in Bluetooth 5.0 for headsets & mobile devices
Compatible with up to 4x GBX20 Extension Modules
Dual Mic with HD speakerphone and Noise-Shield 2.0 Technology
10-way audio conferences, 3-way 720p HD video meetings
16 lines, 16 SIP accounts, PoE



WP Series Cordless Wi-Fi IP Phones



The WP Series enables businesses to create mobile VoIP solutions that utilize immersive Wi-Fi networks to support roaming throughout any facility. Designed to suit a variety of vertical market applications, the WP Series offers powerful features, mobility, door access management and durability to support mobile work environments

Common Deployments



Retail



Healthcare



Warehouses



Education

Key Features



Dual-band Wi-Fi with advanced roaming support



HD voice & dual MIC with background Noise shield



Customizable button for PTT, panic, etc.



Rechargeable batteries



Built-in Bluetooth for headsets & data exchange



Cloud management with GDMS

Mobilize Your VoIP Network



The WP Series provides businesses with the ability build mobile VoIP networks that empower employees to roam around an entire facility while still being able to make and receive calls. These wireless voice networks are easy to install and manage because they utilize immersive Wi-Fi networks, allowing workers to roam throughout any office, warehouse, construction site, retail store and more. Also, our GWN Series of Wi-Fi APs offer QoS to prioritize voice connections over Wi-Fi.



[Product Datasheet](#)

WP825 - Ruggedized Cordless Wi-Fi IP Phone

2 SIP Accounts, 2 lines
 Dual-band Wi-Fi with efficient antenna design and advanced roaming support
 Integrated Bluetooth to connect headsets
 HD voice & dual MIC design with AEC and Noise Shield Technology
 Rechargeable 2000mAh battery, 8-hour talk time, 200-hour standby
 Accelerometer and configure button for push-to-talk
 Micro USB port and 3.5mm headset jack
 Ruggedized Design, Waterproof, Dustproof, drop safe from 2.5m



[Product Datasheet](#)

WP822 - Cordless Wi-Fi IP Phone

2 SIP Accounts, 2 lines
 Dual-band Wi-Fi with efficient antenna design and advanced roaming support
 Integrated Bluetooth to connect headsets
 HD voice & dual MIC design with AEC and Noise Shield Technology
 Rechargeable 2000mAh battery, 8-hour talk time, 200-hour standby
 Accelerometer and configure button for push-to-talk
 Micro USB port and 3.5mm headset jack
 Support for wideband audio, HAC supported



[Product Datasheet](#)

WP820 - Cordless Wi-Fi IP Phone

2 SIP accounts, 2 lines
 Dual-band Wi-Fi with efficient antenna design and advanced roaming support
 Bluetooth for syncing headsets and mobile devices (contacts and call transferring)
 HD voice & dual MIC design with AEC and Noise Shield Technology
 Rechargeable 1500mAh battery, 7.5 hour talk time, 150-hour standby
 Accelerometer and configurable button for push-to-talk
 Micro USB port and 3.5mm headset jack
 Supports custom Android apps that fit the phone's screen/keys
 Battery charger available (GMC08) that can charge up to 8 batteries at a time



[Product Datasheet](#)

WP810 - Basic Cordless Wi-Fi IP Phone

2 SIP accounts, 2 lines
 Dual-band Wi-Fi with efficient antenna design and advanced roaming support
 HD voice & dual MIC design with AEC and Noise Shield Technology
 Rechargeable 1500mAh battery, 6 hour talk time, 120-hour standby
 Micro USB port and 3.5mm headset jack
 Battery charger available (GMC08) that can charge up to 8 batteries at a time



DP Series DECT Cordless IP Phones



The DP Series offers a variety of DECT handsets and base stations that enable businesses to create affordable cordless VoIP solutions that support office mobility. By featuring robust telephony features, range up to 400 meters outdoors and 50 meters indoors, color-screen LCDs and more, the DP Series allows any business to mobilize their VoIP network.

Common Deployments



Key Features



Up to 10 SIP accounts per system & handset



HD audio & full-duplex speakerphones



Push-top-talk and panic button options on most models



Rechargeable batteries



DECT authentication & encryption technology



Cloud management with GDMS

Cordless Solutions for Small & Medium Spaces



The DP Series provides a high-quality and cost-effective cordless solution to mobilize VoIP networks in any small-to-medium space. We offer 3 cordless DECT handsets that pair with either the DP750 or DP752 base station to support a range of up to 400 meters outdoors and 50 meters indoors.

DECT Handsets



[Product Datasheet](#)

DP730 - 400m Range DECT Cordless IP Phone

10 SIP accounts, 10 lines
3-way voice conferencing
Supports a range of up to 400 meters outdoors and 50 meters indoors Supported by DP752 and DP750 base stations
2.4 inch (240x320) color TFT LCD display
Offers 40-hour talk time and 500-hour standby time
Dedicated push-to-talk button, built-in proximity and accelerometer sensors HD audio on the speakerphone, handset, and headset jack



[Product Datasheet](#)

DP722 - 350m Range DECT Cordless IP Phone

10 SIP accounts, 10 lines
3-way voice conferencing
Supports a range of up to 350 meters outdoors and 50 meters indoors Supported by DP752 and DP750 base stations
1.8 inch (128x160) color TFT LCD display
Offers 40-hour talk time and 500-hour standby time
Configurable push-to-talk button
HD audio on the speakerphone, handset, and headset jack



[Product Datasheet](#)

DP720 - 350m Range DECT Cordless IP Phone

10 SIP accounts, 10 lines 3-way voice conferencing
Supports a range of up to 350 meters outdoors and 50 meters indoors Supported by DP752 and DP750 base stations
1.8 inch (128x160) color TFT LCD display
Offers 40-hour talk time and 500-hour standby time
HD audio on the speakerphone, handset, and headset jack

DECT Base Stations

DP752 - Long-Range DECT VoIP Base Station



[Product Datasheet](#)

Up to 10 SIP accounts per system; up to 10 lines per handset
 Pairs with up to 5 of Grandstream's DP series DECT handsets via instant pairing
 Outdoor range of up to 400 meters with the DP730
 Outdoor range up to 350 meters with DP722/DP720
 Indoor range up to 50 meters
 Supports handset Push-to-Talk
 Supports activity based on proximity and accelerometer sensors
 Offers multiple ring group options including: circular, linear, parallel and shared
 Automated provisioning options include TR-069 and XML config files

DP750 - Long-Range DECT VoIP Base Station



[Product Datasheet](#)

Up to 10 SIP accounts per system; up to 10 lines per handset
 Pairs with up to 5 of Grandstream's DP series DECT handsets via instant pairing
 Outdoor range of up to 300 meters
 Indoor range up to 50 meters
 Supports handset Push-to-Talk
 Supports activity based on proximity and accelerometer sensors
 Offers multiple ring group options including: circular, linear, parallel and DID
 Automated provisioning options include TR-069 and XML config files

DP760 - Long-Range Wideband DECT Repeater



[Product Datasheet](#)

Up to 2 concurrent HD calls
 Extends an additional range of 300m outdoors and 50m indoors
 Automatic or manual association to DP750/DP752 base stations for easy use
 Plug-n-Play features like auto association, auto region detection
 Seamless call handover
 Automated provisioning options include XML config files
 Integrated PoE



UCM Series IP PBXs



A powerful yet easy to manage voice, video, data, and mobility communications platform has never been more achievable than with Grandstream's Series of UCM IP PBXs. The UCM Series offers an extensive set of unified communication features in an easy-to-manage on premise solution with no licensing fees, upgrade fees or costs per feature. Our UCMs range from small and medium business deployments to small and medium enterprise solutions.

Common Deployments



SMB



Hospitality



Enterprise



Call Centers

Key Features



3000 users

Supports 500 - 3000 users

zero CONFIG

Auto-discovery & Zero config provisioning



Advanced, customizable voice & call routing



Supports any SIP video device & service



Enterprise-grade data tools including reports, CDR, and more



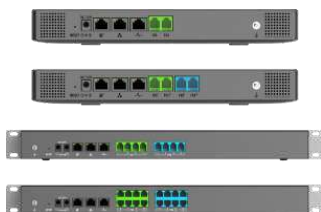
A variety of mobility options allow users to be reached anywhere

Powerful Unified Communication and Collaboration Solutions that Scale



With the UCM Series, businesses can build state-of-the-art voice, video, data and mobility solutions that can easily be scaled. The Series offers models that support up to 3000 users, and multiple UCMs can be peered together to increase capacity. Users get access to thousands of features, which are always being expanded.

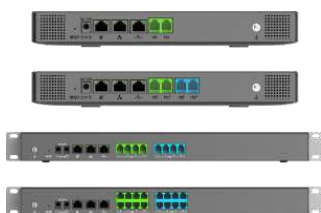
UCM6300 Series - IP PBXs for up to 3000 Users



[Product Datasheet](#)

Supports up to 3000 users and up to 450 concurrent calls
 Zero configuration provisioning of Grandstream SIP endpoints
 Built-in conferencing & meetings platform for desktop, Wave, and SIP endpoints
 Wave App allows communication with all UCM6300 users & solutions
 API available for third-party integrations, including CRM and PMS platforms
 Automated NAT firewall traversal service with UCM RemoteConnect
 Compatible with GDMS for cloud setup, management, and monitoring
 Based on Asterisk* version 16

UCM6300A Series - Audio Focused IP PBXs



[Product Datasheet](#)

Supports up to 1500 users and up to 200 concurrent calls
 Zero configuration provisioning of Grandstream SIP endpoints
 Built-in Instant Messaging (IM), Audio Conferencing & Web Meetings platform
 Wave App allows easy voice & IM communications for web, desktop, and mobile
 API available for third-party integrations, including CRM and PMS platforms
 Automated NAT firewall traversal service with UCM RemoteConnect
 Compatible with GDMS for cloud setup, management, and monitoring
 Based on Asterisk* version 16

UCM6510 - IP PBX for up to 2000 Users



[Product Datasheet](#)

Supports up to 2000 users, 200 concurrent calls and 64 conference attendees
 1GHz quad-core Cortex A9 processor
 1GB DDR3 Ram, 32GB Flash
 Integrated T1/E1/J1 interface
 2 PSTN trunk FXO ports
 2 analog telephone/Fax FXS ports with lifeline capability
 Security protection using SRTP, TLS and HTTPS encryption
 Auto Discovery and Zero Configuration of Grandstream SIP endpoints

HA100 - Failover solution for the UCM6510 IP PBX



[Product Datasheet](#)

Connects and constantly monitors two UCM6510 together for high availability
 Smart failover solution that automatically switches to a hot-standby secondary UCM6510 if the primary one fails
 Up to 14 LED indicators showing real-time status of all of the telecom lines, network links, auxiliary devices, etc
 Gratuitous ARP forces SIP endpoints to refresh the MAC address of the new UCM6510 without interruptions
 Fast 10 to 50 second system switching time depending on the number of registered endpoints



The UCM6300 Ecosystem is a solution bundle that elevates the UCM6300 series IP PBXs to easily and securely reach outside of the on-site network to support remote workers. First, UCM RemoteConnect is a cloud-based service to enable secure remote access and device management to businesses using the UCM6300 series. It provides zero-touch NAT firewall traversal for remote users and devices while offering IT professionals a secure tool to easily manage the UCM6300 series, registered endpoints, and remote users. Next, the Wave provides a powerful voice and video collaboration platform for remote users within a UCM6300 series IP PBX, available on desktop and mobile. Together, the UCM6300 series, UCM RemoteConnect, and Wave provide any organization with a powerful, easy-to-manage, and flexible communication and collaboration solution.

UCM RemoteConnect - NAT Firewall Traversal



[Product Datasheet](#)

- Cloud-based NAT firewall traversal service; runs on AWS
- Productive meetings, calls, and conferences with the included Wave app
- Offers secure connections with remote SIP endpoints registered to a UCM6300 IP PBX
- Provides built-in tools for IT-friendly secure management of remote devices
- Integrated with GDMS for centralized management of remote devices
- Built-in advanced system and device monitoring & diagnosis tools
- Provides advanced system and device reports and real-time email alerts
- Free plans available; offers cloud storage, reports, alerts, & more

Wave App - Mobile and Web Collaboration App



[Product Datasheet](#)

- Supports Android & iOS devices; Chrome and Firefox browsers
- Remotely join meetings, calls, and conferences
- Compatible with Wi-Fi and 2G/3G/4G networks
- Allows UCM6300 series users to call other extensions, landlines, and mobile numbers
- Schedule and start meetings from the app
- Supports PC and mobile built-in cameras & USB webcams
- Supports video resolutions up to 1080p HD
- Supports use with Bluetooth, USB, and other headsets
- Compatible with UCM RemoteConnect cloud service for secure remote connections



Video & Audio Conferencing Solutions



Grandstream has everything that any business needs to create a powerful yet affordable video & audio conferencing solution. The GVC Series of Video Conferencing devices and GAC Conferencing Phone empower any business with a robust and affordable Android-based collaboration environment that offers platform flexibility. If you are looking to build a solution, our IPVideoTalk cloud platform and IPVT10 on-premise server provide competitive and easy-to-deploy options.

Common Deployments



SMB



Enterprise



Education



Healthcare

Key Features



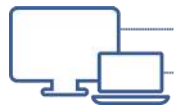
All conferencing endpoints run Android



Sharp video quality up to 4k resolutions



Advanced cameras offer 90 degree FOV and PTZ



Various options for screen sharing, including Miracast



Built-in Wi-Fi for easy conferencing on most devices



IPVideoTalk offers room and web conferencing options

Truly Flexible Conferencing Solutions



The GVC Series supports a wide variety of video conferencing formats and platforms, offering the flexibility for businesses to pick and change their platform at any point. It can support any SIP and H.323 conferencing solution, including our IPVideoTalk cloud service, while also allowing users to conference using any Android app. We also offer an on-premise collaboration server, IPVT10, for businesses who would prefer a local platform that they can fully control.

GVC3220 - Ultra HD Multimedia Conferencing System



[Product Datasheet](#)

Runs on Android 9.0 operating system
 GMD1208 desktop wireless microphone provides full room coverage for up to 5m
 Remote video screen real-time control and sharing PC screen functions
 Advanced camera with 8M pixel CMOS sensor, FOV wide angle lens, 12x zoom
 Integrated dual-band Wi-Fi 802.11 a/b/g/n/ac (2.4GHz & 5GHz)
 5-way 1080p or 9-way 720p
 1x HDMI in, 2x HDMI out, 1x line in/out, 1x media
 Supports sharp video quality of up to 4K full-HD video output

GMD1208 - Desktop Wireless Microphone



[Product Datasheet](#)

Capacitive touch mute button with LED
 1500mA built-in Li-Ion battery
 Micro-B port for charging. BYOD microphone and upgrading
 Low power indicator
 Bluetooth v2.1+EDR protocols
 Proprietary 2.4GHz wireless technology with dynamic beamforming technology
 Ultrasound pairing technology
 High quality audio coding with error tolerance
 Built-in 8 omni-directional MEMS with 5-meter pickup range

GVC3210 - Video Conferencing Endpoint



[Product Datasheet](#)

Experience sharp video quality of up to 4k resolution
 Runs on Android 6.x operating system
 Built-in Bluetooth
 Integrated dual band Wi-Fi
 Built in 4-MIC array with beam-forming
 Advanced camera with 16M pixel CMOS sensor, wide angle lens and ePTZ
 Support for Miracast wireless content sharing to share a presentation
 Integrated 1x HDMI in, 2x HDMI out, and 2x USB

GVC3212 - IPVideoTalk HD Conferencing Device



[Product Datasheet](#)

Advanced camera with megapixel CMOS sensor, 60 FOV wide-angle lens
 Runs on Grandstream's IPVideoTalk Meetings Platform
 Integrated dual-band Wi-Fi 802.11 a/b/g/n/ac
 Dual-microphones with 3-meter pickup distance
 Advanced acoustic echo cancellation Noise Shield technology
 Built-on adjustable stand for TV-top mounting
 Support for Miracast wireless content sharing
 Integrated 1x HDMI and 2x USB ports



[Product Datasheet](#)

GVC3200 – Video Conferencing System

1080p Full-HD video, up to 9-way video conferences, support for 3 monitor outputs through 3 HDMI outputs 9-way hybrid-protocol conferencing with no external MCUs/servers or extra software licenses

PTZ camera with 12x zoom

Plug and Play connection to Grandstream's IPVideoTalk video conferencing service

Supports most SIP and H.323 video conferencing platforms



[Product Datasheet](#)

GVC3202 – Video Conferencing System

1080p Full-HD video, up to 3-way video conferences, support for 2 monitor outputs through 2 HDMI outputs 3-way hybrid-protocol conferencing with no external MCUs/servers or extra software licenses, PTZ Camera with 9x optical zoom, Based on Android, Integrated Bluetooth, Gigabit ports, video recording, Screen sharing through HDMI/VGA input Installed in just 3 simple steps (connect to network, TV monitors and speaker/mic, Built-in Meeting scheduler, Plug and Play connection to Grandstream's IPVideoTalk video conferencing service, Supports third party SIP video conferencing platforms



[Product Datasheet](#)

GAC2500 - Audio Conferencing Phone

HD audio to maximize audio quality

Runs on Android 4.4

Built-in Bluetooth

Integrated Wi-Fi support

3 cardioid microphones with 12ft. pickup distance

4.3 inch (800x480) capacitive touch screen

Supports 6 SIP accounts and 7-way voice conferencing

3.5mm audio port, USB Micro-B, RJ48 daisy chain port



[Product Datasheet](#)

IPVideoTalk Meetings - Conferencing Platform

Subscription-based cloud platform compatible with all GVC Series devices

Supports web and room-based conferencing along with webinars

1080p HD video resolutions

HD Audio quality

Screen sharing to show presentations, documents, videos, websites and more

1-click meetings with no client downloads

Advanced meeting controls, reports and analytics

Chat feature allowing attendees to communicate through typed chat

Attend meetings on any PC, Mac, iOS and Android device

Visit ipvideotalk.com for more information and to sign up



[Product Datasheet](#)

IPVT10 - Enterprise Video Conferencing Server

Support for up to 300 participants and 120 video feeds per session; up to 10 simultaneous sessions

Video and audio recording with 500GB local storage

1080p HD via H.264/VP8 for real-time video and screen sharing

Advanced meeting controls, • Flexible scheduling, customizable registration options, follow-up email options, meeting reports and more



GUV Series Personal Collaboration Devices



The GUV series of Personal Collaboration Solutions provides a variety of powerful audio and video solutions that enhance remote communication and collaboration. They are designed to provide a powerful HD collaboration experience with all day comfort for remote workers, students, teachers, healthcare professionals, contact centers and more. The GUV series offers peace-of-mind by being compatible with most major third-party platforms, apps and softphones as well as computers, laptops and IP Phones – providing a powerful yet easy-to-deploy solution.

Common Deployments



Key Features



HD audio for crystal clear and easy communication



USB 2.0 connection to support any device with USB compatibility



Busy light to indicate a call in-progress



Noise canceling technology to minimize background noise



Compatible with all major third-party communication platforms



Adjustable video settings, supports 1080p Full HD video

Ideal for Remote Workers



By combining the GUV series headsets and webcams, any organization - both remote and on-site - can have peace of mind with an easy-to-use, enhanced collaboration solution.



[Product Datasheet](#)

GUV3000 & GUV3005 - HD USB Headsets

HD Audio for crystal clear and easy communication
USB connection provides flexibility on any device with USB compatibility
Noise canceling technology to minimize background noise
The GUV3005 includes a busy light to indicate a call in progress
Offers an adjustable headband, in-line controls, and left or right wearing style
Compatible with any USB device, supports third-party and Grandstream platforms, apps, and softphone



[Product Datasheet](#)

GUV3050 - HD Bluetooth Headset

HD Audio for crystal clear and easy communication
Bluetooth compatible and can be paired with up to two devices at the same time
Noise canceling technology to minimize background noise
Integrated ring-shaped busy lights on both sides of headset to indicate a call
Offers an adjustable headband, in-line controls, and left or right wearing style
USB adapter and charging base station included



[Product Datasheet](#)

GUV3100 - 1080p Webcam

Supports 1080p Full HD video at 30fps
USB 2.0 port offers plug-and-play setup, no software download/installation needed
2 built-in microphones offer a 1+ meter voice pickup range
Compatible with all major third-party platforms, apps, and softphones
Adjustable video settings include brightness, resolution, saturation, and more
Noise canceling technology to minimize background noise



GDS Series Facility Access Solutions



The GDS Series of Facility Access Systems tracks and manages access to any physical building and provides a dedicated audio and/or video intercom. Thanks to its integration with other Grandstream endpoints, the GDS Series offers a complete end-to-end solution for access control, video/audio intercom, and security needs.

Common Deployments



SMB



Enterprise



Education



Warehouses

Key Features



GDS3710 offers 1080p HD resolution



RFID chip reader for keyless entry



IP66 weatherproof Casing



Built-in HD Speaker loudspeakers



HD mics with acoustic echo cancellation (AEC)



Make SIP calls to IP voice & video phones

Track, Manage & Record with GDS Manager; Control with IP Phones



By combining the GDS Series with our free GDS Manager software and Grandstream IP voice and video phones, businesses can create an integrated facility access and security solution. GDS Manager offers a centralized management and tracking platform, while Grandstream endpoints enable permitted users to have intercom conversations and open doors with any GDS device, right from their desktop phone.

Facility Access Devices



[Product Datasheet](#)

GDS3712 – HD IP Video Door System

Powerful video resolutions up to 1080p
 2 Relay for Electric Lock and Alarm out,
 2 Alarm In for Exit button and door sensor
 weatherproof and vandal resistant
 Built-in hemispheric camera
 Supports motion detection
 Integrated PoE
 Built-in microphone and speaker



[Product Datasheet](#)

GDS3710 – HD IP Video Door System

Video resolutions up to 1080p
 Built-in RFID chip reader for keyless entry
 SIP video streaming to NVRs, video intercom stations, IP phones, or smart phones
 Built with a metal casing to make it weatherproof and vandal resistant
 Built-in hemispheric camera allows for 180-degree wall-to wall coverage
 Supports motion detection
 Integrated PoE to power the device and provide a network connection
 Built-in microphone and speaker offers voice options and intercom functionality
 ONVIF Profile S compliant



[Product Datasheet](#)

GDS3702 - HD Audio IP Intercom System

HD audio options with up to 1.5m of audio input and 3m of audio output
 Supports SIP calls to IP phones to facilitate communication
 Built with a metal casing to make it weatherproof and vandal resistant
 Integrated PoE to power the device and provide a network connection
 Built-in microphone and HD loudspeaker with advanced AEC
 ONVIF Profile S compliant



[Product Datasheet](#)

GDS3705 - IP Audio Door System

HD audio options with up to 1.5m of audio input and 3m of audio output
 Built-in RFID chip reader for keyless entry
 Supports SIP calls to IP phones to facilitate communication
 Built with a metal casing to make it weatherproof and vandal resistant
 Integrated PoE to power the device and provide a network connection
 Built-in dual microphone and HD loudspeaker with advanced AEC
 ONVIF Profile S compliant

Facility Access Management Software



GDS Manager - Free Management Software

Free Windows-based management software for GDS3710 and GDS3705 View real-time and recorded audio/video from the GDS3710/3705

Door Access Management
RFID card management
Attendance reports, analytics, and more Features client/server architecture

Download at grandstream.com/support/tools



Facility Management & Security Solutions



Grandstream offers a variety of products that allow businesses to easily manage their facility while also keeping it safe and secure. The GSC series includes SIP intercom and paging solutions, IP cameras, and a touch-screen facility control station. Ideal for office buildings, enterprises, schools, healthcare facilities, retail centers, residential settings, warehouses and similar environments, our solutions allows businesses to build easy-to-manage management and security platforms that can be integrated with IP phones to expand communication.

Common Deployments



Enterprise



Education



Retail



Hospitality

Key Features



Full-duplex HD speakers



GSC3510 includes 3 Directional Mics



Dual-band Wi-Fi support



2-pin input supports third party devices



GSC3570 offers 7" touch screen station



10/100 Mbps ports with PoE

Add Intercom, PA & Video Security to Any VoIP Solution



The GSC3510 and the GSC3505 allow businesses to add intercom and/or public address functionality to any VoIP network, while the GSC3615 and GSC3610 add video surveillance to any VoIP solution. These devices are added to a network as SIP extensions. Meanwhile, the GSC3570 adds a dedicated station to manage intercom, paging, facility access, surveillance cameras and more.



[Product Datasheet](#)

GSC3510 - SIP Intercom Speaker/Microphone

Full-duplex speakerphone with HD acoustic chamber
Advanced acoustic echo cancellation
3 directional mics with MMAD & microphone beamforming array
Full-band and wide-band audio codec support including Opus & G.722
Integrated dual-band 802.11 a/b/g/n WiFi and Bluetooth
One 10/100Mbps network port with PoE/ PoE+
2-pin multi-purpose input to support peripherals including call buttons
Features SIP paging, multicast paging, callwaiting with priority override



[Product Datasheet](#)

GSC3505 - 1-Way Public Address SIP Speaker

Speaker with HD acoustic chamber
Full-band and wide-band audio codec support including Opus & G.722
Integrated dual-band 802.11 a/b/g/n WiFi and Bluetooth
One 10/100Mbps network port with PoE/ PoE+
Features SIP paging, multicast paging, callwaiting with priority override



[Product Datasheet](#)

GSC3570 - HD Facility Control Station

Dedicated device for managing door access, intercom, paging, security and more 7 inch 1024x600 touch screen
Dual-band 802.11ac Wi-Fi
4 alarm input ports and 1 alarm output port for customized deployments
Full duplex 2-way HD audio with advanced echo cancellation
Secure booth & data, TLS and SRTP encryption technology
Wall mountable or place on a desktop
Integrated PoE
4 SIP accounts



[Product Datasheet](#)

GSC3610 - Infrared Weatherproof IP Dome Camera

Fixed 3.6mm lens, dome camera
Smart infrared technology for optimal white balance and exposure
IP66 weatherproof capability
1080p HD resolution, H.264/H.265/JPEG/MJPEG video compression
One 10/100 Mbps ports, Integrated PoE
Supports alert notifications via outbound voice/video call and email screenshot



[Product Datasheet](#)

GSC3615 - Infrared Weatherproof IP Camera

The GSC3615 is a weather-proof Infrared (IR) wall-mounted bullet IP camera with a 3.6mm lens - making it ideal for wide-angle monitoring of nearby subjects in environments such as banks, hotels, retail, offices, warehouses, and building entrances.



[Product Datasheet](#)

GSC3620 - Infrared Weatherproof IP Dome Camera

Supports motion detection
Smart infrared technology for optimal white balance and exposure
Built-in PoE to power the device and provide a network connection
2.8mm-12mm Varifocal and auto-focus lens for an adjustable field of view
Supports alert notifications via outbound voice or video call & email screenshot
IP67-level weatherproof capability
Primary stream and Secondary stream
SIP/VoIP support for video and audio streaming to endpoints (external microphone required)



GWN Series Wi-Fi Solutions

The GWN.CLOUD logo features a blue cloud outline above the text "GWN.CLOUD" in a bold, blue, sans-serif font. The background of the entire page is a blurred image of a modern office hallway with people walking.

The GWN Series of Networking Solutions allow businesses to build powerful and secure Wi-Fi networks with wide coverage range and industry-leading security features. They are supported by a variety of free management tools, including built-in controllers, our GWN.Cloud platform and GWN Manager software.

Common Deployments



Key Features



Dual-band MU-MIMO maximizes speeds



Embedded controller built-in to all APs (aside from GWN7602)



Secure boot, critical data lockdown, unique security certificates, etc.



Gigabit ports support speeds from 1.27 - 3.55 Gbps (based on model)



Ensure real-time performance of critical apps



Free and unlimited cloud management with GWN.Cloud

Powerful Wi-Fi Networks and Free Management Options



Not only do we provide a portfolio of enterprise-grade Wi-Fi APs and routers, but we also offer a range of free management tools. Most GWN Series APs uniquely include an embedded controller in their web UI, GWN.Cloud offers a free cloud platform that supports unlimited APs, and GWN.Manager provides a free software Wi-Fi management platform.

Wi-Fi 6 Wireless Access Points



[Product Datasheet](#)

GWN7664LR - Outdoor Long Range Wi-Fi 6 Access Point

Wi-Fi 6

3.55Gbps aggregate wireless throughput, 2.5Gbps aggregate wired throughput

Dual-band 4x4:4 MU- MIMO with DL/UL OFDMA technology

Self power adaptation upon auto detection of PoE or PoE+

Support 750+ concurrent Wi-Fi client devices

Up to 300-meter coverage range

Advanced QoS to ensure real-time performance of low-latency applications

Anti-hacking secure boot and critical data/control lockdown

Flexibility of 4 detachable/changeable antennas for different application scenarios

Embedded controller manages up to 50 local GWN APs; GWN.Cloud offers unlimited AP management, & GWN Manager offers on-premise software AP management



[Product Datasheet](#)

GWN7664 - 802.11ax Wi-Fi 6 Access Point

Wi-Fi 6

Dual-band 4x4:4 MU-MIMO with DL/UL OFDMA technology

Support 750 concurrent Wi-Fi client devices

3.55Gbps aggregate wireless throughput, 3.5Gbps aggregate wired throughput Up to 175-meter coverage range

Advanced QoS to ensure real-time performance of low-latency applications

Anti-hacking secure boot and critical data/control lockdown

Embedded controller, GWN.Cloud, and GWN Manager to manage APs Self power adaptation upon auto-detection of PoE or PoE+



[Product Datasheet](#)

GWN7660 - 802.11ax Wi-Fi 6 Access Point

Wi-Fi 6

Dual-band 2x2:2 MU-MIMO with DL/UL OFDMA technology

1.77Gbps aggregate wireless throughput and 2x Gigabit Ethernet ports

Up to 175-meter coverage range

Supports 256 concurrent Wi-Fi client devices

Advanced QoS to ensure real-time performance of low-latency applications

Anti-hacking secure boot and critical data

Embedded controller, GWN.Cloud, and GWN Manager to manage APs

Self power adaptation upon auto-detection of PoE or PoE+



[Product Datasheet](#)

GWN7660LR - Outdoor Long Range Wi-Fi 6 Access Point

Wi-Fi 6

Up to 250-meter coverage range

Supports 256+ concurrent Wi-Fi client devices

Dual-band 2x2:2 MU- MIMO with DL/UL OFDMA technology

1.77Gbps aggregate wireless throughput and 2x Gigabit Ethernet ports 2

detachable/ changeable antennas for different application scenarios Self-

power adaptation upon auto detection of PoE or PoE+

Advanced QoS to ensure real-time performance of low-latency applications

Anti-hacking secure boot and critical data

Embedded controller, GWN.Cloud, and GWN Manager to manage APs IP66-

level weatherproof capability when installed vertically

Wireless Access Points



[Product Datasheet](#)

GWN7630LR - Outdoor Long Range Wi-Fi Access Point

Up to 300-meter coverage range
 Supports 200+ concurrent Wi-Fi client devices
 Dual-band 4x4:4 MU-MIMO technology
 2.33 Gbps wireless throughput and 2x Gigabit wireline ports
 4 detachable external antennas
 Self power adaptation upon auto detection of PoE or PoE+
 Advanced QoS to ensure real-time performance of low-latency applications
 Anti-hacking secure boot and critical data
 Embedded controller, GWN.Cloud, and GWN Manager to manage APs
 IP66-level weatherproof capability when installed vertically



[Product Datasheet](#)

GWN7630 - High-Performance Wi-Fi Access Point

Up to 175-meter coverage range
 Supports 200+ concurrent Wi-Fi client devices
 Dual-band 4x4:4 MU-MIMO technology
 2.33 Gbps wireless throughput and 2x Gigabit wireline ports
 Self power adaptation upon auto detection of PoE or PoE+
 Advanced QoS to ensure real-time performance of low-latency applications
 Anti-hacking secure boot and critical data
 Embedded controller, GWN.Cloud, and GWN Manager to manage APs



[Product Datasheet](#)

GWN7624 - In-Wall Access Point

2.03 Gbps wireless throughput and 4x Gigabit wireline ports
 5GHz 4x4:4 MU-MIMO
 Supports up to 200 concurrent Wi-Fi client devices
 Embedded controller manages up to 30 local GWN APs; GWN.Cloud offers unlimited AP management, & GWN Manager offers on-premise software AP management



[Product Datasheet](#)

GWN7625 - Indoor Wi-Fi Access Point

Up to 165-meter coverage range
 Supports 200+ concurrent Wi-Fi client devices
 4x4:4 MIMO technology (5Ghz)
 2.03 Gbps wireless throughput and 2x Gigabit wireline ports
 Self power adaptation upon auto detection of PoE or PoE+
 Advanced QoS to ensure real-time performance of low-latency applications
 Anti-hacking secure boot and critical data
 Embedded controller, GWN.Cloud, and GWN Manager to manage APs

Wireless Access Points



[Product Datasheet](#)

GWN7615 - Enterprise Wi-Fi Access Point

Up to 175-meter coverage range
Supports 200+ concurrent Wi-Fi client devices
Dual-band 3x3:3 MIMO technology
1.75 Gbps wireless throughput and 2x Gigabit wireline ports
Self power adaptation upon auto detection of PoE or PoE+
Advanced QoS to ensure real-time performance of low-latency applications
Anti-hacking secure boot and critical data
Embedded controller, GWN.Cloud, and GWN Manager to manage APs



[Product Datasheet](#)

GWN7605 - Mid-Tier Wi-Fi Access Point

Up to 165-meter coverage range
Supports 100+ concurrent Wi-Fi client devices
Dual-band 2x2:2 MU-MIMO technology
1.27 Gbps wireless throughput and 2x Gigabit wireline ports
Support 802.3af Power-over-Ethernet (PoE)
Advanced QoS to ensure real-time performance of low-latency applications
Anti-hacking secure boot and critical data
Embedded controller, GWN.Cloud, and GWN Manager to manage APs



[Product Datasheet](#)

GWN7605LR - Outdoor Long-Range Wi-Fi Access Point

1.27Gbps aggregate wireless throughput and 2x Gigabit wireline ports
Dual-band 2x2:2 MU-MIMO with beam-forming technology
Self power adaptation upon auto-detection of PoE or PoE+
Supports 100+ concurrent Wi-Fi client devices
Up to 250-meter coverage range
Advanced QoS to ensure real-time performance of low-latency applications
Anti-hacking secure boot and critical data/control lockdown



[Product Datasheet](#)

GWN7602 - Wi-Fi AP with Integrated Ethernet Switch

Up to 100-meter coverage range
Supports 80+ concurrent Wi-Fi client devices
Dual-band 2x2:2 MIMO technology
1.17 Gbps wireless throughput, 1x Gigabit and 3x 100Mbit wireline speed
Self power adaptation upon auto detection of PoE/PoE+ and PSE
Advanced QoS to ensure real-time performance of low-latency applications
Anti-hacking secure boot and critical data
GWN.Cloud and GWN Manager to manage APs

Management



GWN.Cloud and GWN Manager

Free Cloud platform: GWN.Cloud (visit gwn.cloud)

Free software: GWN Manager

Complete scalability with no limits on the number of AP, sites, or groups

Access either platform via the web user interface or mobile app for iOS and Android

Comprehensive network monitoring and reporting, captive portals and more

High reliability (GWN.Cloud hosted by Amazon Web Services (AWS))

Bank-grade TLS encryption from end-to-end

X.509 certificate-based authentication

Router



[Product Datasheet](#)

GWN7062 – Wi-Fi 6 Dual-Band Router

2.03 Gbps wireless throughput and 4x Gigabit wireline ports

5GHz 4x4:4 MU-MIMO

Supports up to 200 concurrent Wi-Fi client devices

Embedded controller manages up to 30 local GWN APs; GWN.Cloud offers unlimited AP management, & GWN Manager offers on-premise software AP management



[Product Datasheet](#)

GWN7052/GWN7052F - Wi-Fi 6 Dual-Band Router

2.03 Gbps wireless throughput and 4x Gigabit wireline ports

5GHz 4x4:4 MU-MIMO

Supports up to 200 concurrent Wi-Fi client devices

Embedded controller manages up to 30 local GWN APs; GWN.Cloud offers unlimited AP management, & GWN Manager offers on-premise software AP management



GWN7800 series Networking Switches

Coming Soon



The GWN7800 series are Layer 2+ managed network switches that allow small-to-medium enterprises to build scalable, secure, high performance, and smart business networks that are fully manageable. It supports advanced VLAN for flexible and sophisticated traffic segmentation, advanced QoS for automated detection & prioritization of latency sensitive voice/video traffic, IGMP Snooping for network performance optimization, and comprehensive security capabilities against potential attacks. The PoE models provide smart dynamic PoE output to power IP phones, IPcameras, Wi-Fi access points and other PoE endpoints.



HT Series Analog Telephone Adapters



Making integrated IP solutions easy and manageable, the HT Series of Analog Telephone Adapters are trusted and deployed by some of the largest service providers in the world. Integrate individual analog phones to a home or office environment with these simple to deploy solutions.

Common Deployments



SMB



Residential



Retail



Education

Key Features



TLS & SRTP encryption technology



Automated provisioning options



Gigabit

Models available with Gigabit ports



Built-in Failover SIP server



Supports T.38 fax



Advanced VoIP telephony features

Trusted by the Largest Service Providers in the World



Grandstream is the world's leading provider of ATAs. Many of the world's top service providers rely on our ATAs, which have been the industry standard for almost 15 years. This series offers a range of devices with various amounts of color-coded FXS ports, available NAT routers, voice conferencing support, and more. If you are looking to integrate analog devices with a VoIP network, the HT Series is your ideal choice.

HT818 - 8 Port FXS Gateway with Gigabit NAT Router



[Product Datasheet](#)

Supports 2 SIP profiles and 8 FXS ports and dual gigabit ports Strong AES encryption with security certificate per unit Automated & secure provisioning options include TR069 3-way voice conferencing per port Exceptional voice quality with wide-band HD codec Supports T.38 Fax for reliable Fax-over-IP High performance NAT router

HT814 - 4 Port FXS Gateway with Gigabit NAT Router



[Product Datasheet](#)

Supports 2 SIP profiles through 4 FXS ports and dual Gigabit ports TLS and SRTP security encryption technology to protect calls and accounts Automated provisioning options include TR-069 and XML config files

3-way voice conferencing per port Exceptional voice quality with wide-band HD codec Supports T.38 Fax for reliable Fax-over-IP Includes a built-in NAT router which can handle routing speeds up to 100Mbps Failover SIP server auto switches to second server if main server loses connection

HT813 - Hybrid ATA with FXS and FXO ports



[Product Datasheet](#)

Supports 2 SIP profiles through 1 FXS port and 1 FXO port TLS and SRTP security encryption technology to protect calls and accounts Automated provisioning options include TR-069

3-way voice conferencing per port Exceptional voice quality with wide-band HD codec Supports T.38 Fax for reliable Fax-over-IP Includes a built-in NAT router Failover SIP server auto switches to second server if main server loses connection Lifeline support (FXS port will be hard-relayed to FXO port) in case of power fail



[Product Datasheet](#)

HT812 - 2 Port ATA with Gigabit NAT Router

Supports 2 SIP profiles through 2 FXS ports and dual Gigabit ports
Includes a built-in NAT router which can handle routing speeds up to 100Mbps
TLS and SRTP security encryption technology to protect calls and accounts
Automated provisioning options include TR-069 and XML config files
Supports 3-way voice conferencing
Failover SIP server auto switches to second server if main server loses connection
Supports T.38 Fax for creating Fax-over-IP



[Product Datasheet](#)

HT802 - 2 Port ATA

Supports 2 SIP profiles through 2 FXS ports and a single 10/100Mbps port
TLS and SRTP security encryption technology to protect calls and accounts
Automated provisioning options include TR-069 and XML config files
Supports 3-way voice conferencing
Failover SIP server auto switches to second server if main server loses connection
Supports T.38 Fax for creating Fax-over-IP



[Product Datasheet](#)

HT801 - 1 Port ATA

Supports 1 SIP profile through a single FXS port and a single 10/100Mbps port
TLS and SRTP security encryption technology to protect calls and accounts
Automated provisioning options include TR-069 and XML config files
Supports 3-way voice conferencing
Failover SIP server auto switches to second server if main server loses connection
Supports T.38 Fax for creating Fax-over-IP



GXW Series VoIP Gateways



The GXW VoIP Gateway Series enables businesses to integrate traditional phone systems with VoIP networks to efficiently manage communication costs and create streamlined networks. The GXW Series is designed for full interoperability with leading IP-PBXs, Soft switches and most SIP based environments and its various models offer support for analog or digital VoIP networks.

Common Deployments



Enterprise



Hospitality



Retail



SMB

Key Features



Gigabit

Models available with Gigabit ports & NAT routers



TLS & SRTP encryption technology



Automated provisioning options



Built-in Failover SIP server



Supports T.38 fax



GXW4500 series offers E1/T1/J1 ports

Integrate Entire Analog Networks and/or Trunks with VoIP Solutions



If you need to integrate analog devices or trunks with a VoIP network, the GXW Series is for you. The GXW4100 and GXW4200 series allow businesses to extend VoIP service to entire networks of analog devices, while the GXW4500 series provides the ability to integrated digital PSTN and ISDN trunks with VoIP networks.

GXW4500 Series - Digital VoIP Gateways



[Product Datasheet](#)

Software configurable E1/T1/ J1 ports, support PRI, SS7, MFC R2
Dual Gigabit auto- sensing RJ45 network ports with integrated NAT router
Supports a wide- range of voice codecs, including Opus, G.722, G.729, iLBC, etc. TLS and SRTP security encryption technology to protect calls and accounts
Self power adaptation upon auto detection of PoE/PoE+ and PSE
Automated provisioning by HTTP/TFTP with XML config files
Supports T.38 Fax for creating Fax-over-IP
Supports multi- language voice prompts

GXW4200 Series - High-Density, Gigabit Gateways



[Product Datasheet](#)

16/24/32 FXS ports, GXW4248 includes 2 50-pin Telco connectors 1 Gigabit network port
132x48 backlit graphic display with support for multiples languages
TLS and SRTP security encryption technology to protect calls and accounts 4 SIP server profiles per system, independent SIP account per port Automated provisioning options include TR-069 and XML config files
Full interoperability with leading IP-PBXs, soft-switches & SIP-based environments

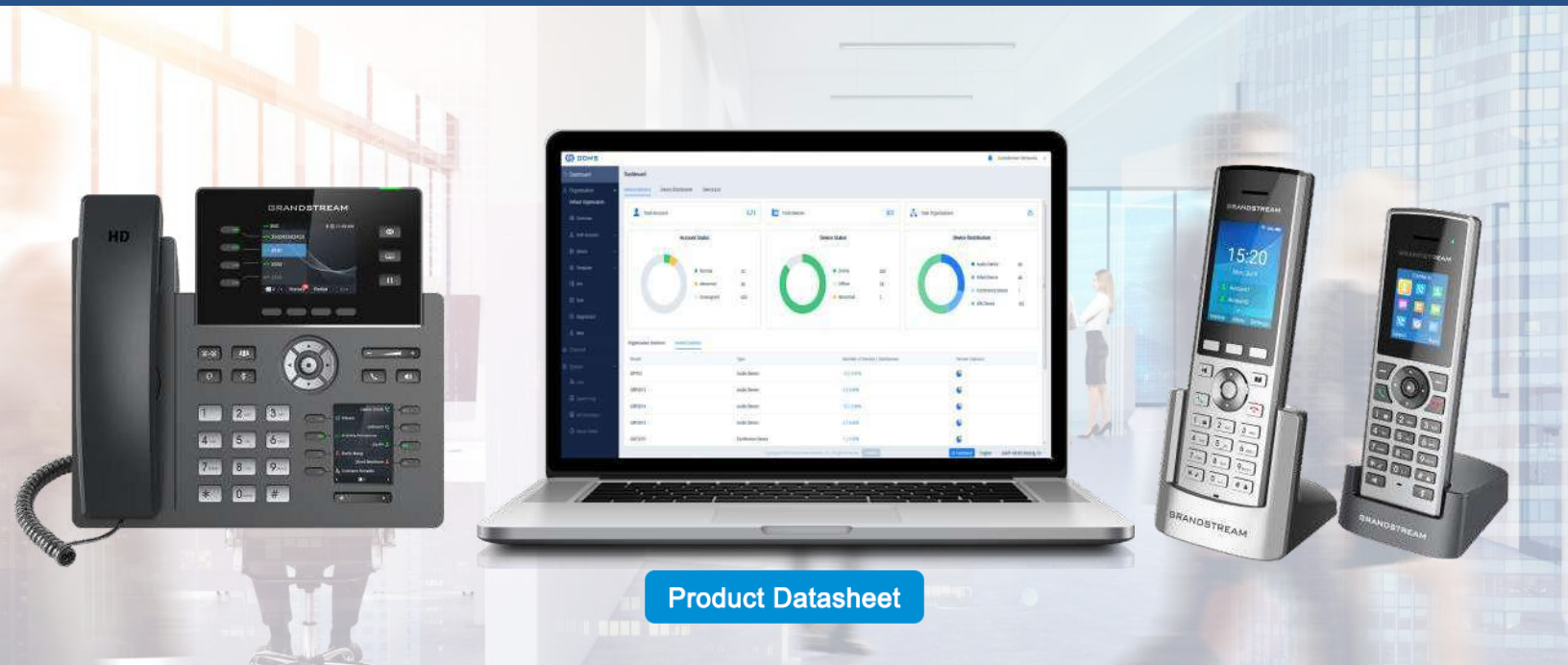
GXW4104/4108 - FXO Gateways



[Product Datasheet](#)

4/8 FXO ports
SRTP security encryption technology to protect calls and accounts
Up to 2 SIP server profiles per system and independent SIP account per port Provisioning options include TFTP and HTTP
PSTN Failover on power failure
Supports T.38 Fax for creating Fax-over-IP
Supports a wide range of caller ID formats

Grandstream Device Management System (GDMS)



Key Features



Configuration, management & monitoring of devices, accounts & firmware



Real-time device & network monitoring; analytical system reports



Manage devices by site, group, model, etc.



TLS, 2-way certificate validation and more



Configurable notifications, intelligent alarms & automatic troubleshooting



Intelligent troubleshooting identifies problems & provides diagnostic reports

Zero-Touch Provisioning and Management



The Grandstream Device Management System (GDMS) is a zero-touch cloud provisioning and management system that provides easy-to-use enterprise-level tools to manage Grandstream products before, during and after deployment. It provides a centralized interface to provision, manage, monitor and troubleshoot. GDMS is ideal for enterprises, service providers and multi-site businesses as it allows them to easily deploy and manage large networks of Grandstream solutions. Visit gdms.cloud to sign up.



FOR SALE CONTACT

Shyam Future Tech Pvt. Ltd.

Corporate Office: Plot No. 03-319 (DH-6/11), Street No - 319, New Town, Rajarhat, Kolkata 700156

Contact No: +91 7604011192 , +91 81004 36750

Email: arijit@shyamfuture.com / inquiry@shyamfuture.com

Web: www.shyamfuture.com

Technology Partners

