



## FIRE SAFETY EQUIPMENT CATALOGUE

# SMB

Trading LLC

CATEGORIES	PAGES
FIRE EXTINGUISHERS	01
FIRE ALARMS AND DEVICES	03
FIRE ALARMS CABLES	05
FIRE ALARM BATTERIES	06
FIRE SPRINKLER SYSTEMS	08
FIRE HOSES	09
FITTINGS AND PARTS	11



# FIRE EXTINGUISHERS

## DCP FIRE EXTINGUISHERS

### FEATURES:

- Highest fire rating due to high performance ABC powder.
- Ready for instant use and simple to operate.
- Externally coated by Electrostatic powder.
- Painting after shot blasting ensures maximum corrosion resistance.
- Brass nickel plated head valve with simple squeeze operation.
- Made in China.



lxbxh: 175x170x540cm  
Weight: 3KG  
10 Pcs/carton  
Cbm: 0.016065

DCP 1KG



lxbxh: 125x115x390cm  
Weight: 4KG  
8 Pcs/carton  
Cbm: 0.00560625

DCP 2KG



lxbxh: 115x90x345cm  
Weight: 5.1KG  
01 Pc/carton  
Cbm: 0.00357075

DCP 4KG



lxbxh: 175x170x540cm  
Weight: 9.8KG  
01 Pc/carton  
Cbm: 0.016065

DCP 6KG



lxbxh: 200x195x605cm  
Weight: 14.2KG  
01 Pc/carton  
Cbm: 0.023595

DCP 9KG



lxbxh: 635x190cm  
Weight: 17.8KG  
01 Pc/carton  
Cbm: 0

DCP 12KG



lxbxh: 400x380x650cm  
Weight: 49KG  
01 Pc/carton  
Cbm: 0.0988

Trolley Cylinder  
DCP 25KG



lxbxh: 420x380x850cm  
Weight: 83KG  
01 Pc/carton  
Cbm: 0.13566

Trolley Cylinder  
DCP 50KG



APPROVED



# FIRE EXTINGUISHERS

## CO2 FIRE EXTINGUISHERS

### FEATURES:

- Carbon dioxide in gaseous agent.
- Colourless, odourless/non-toxic and provides rapid knock down of industrial fire. It is capable of fighting Class B fire effectively.
- CO2 gas disappears quickly leaving no residue.
- Swivel horn with no freeze burn, with greater directional control of CO2 discharge through the horn rotation feature.
- Seamless steel body (Lightweight).
- High quality polyester paint.
- Made in China.



CO<sub>2</sub> 2 KG



lxbxh: 155x110x595cm  
Weight: 6,5KG  
01 Pc/carton  
Cbm: 0,01014475



CO<sub>2</sub> 5 KG



lxbxh: 215x145x770cm  
Weight: 14KG  
01 Pc/carton  
Cbm: 0.02400475



CO<sub>2</sub> 10 KG



lxbxh: 300x280x1200cm  
Weight: 83KG  
01 Pc/carton  
Cbm: 0,1008

## FOAM FIRE EXTINGUISHERS



FOAM 6Ltr



lxbxh: 170x170x530cm  
Weight: 9.8KG  
01 Pc/carton  
Cbm: 0.015317



FOAM 9Ltr



lxbxh: 205x200x635cm  
Weight: 14.5KG  
01 Pc/carton  
Cbm: 0.026035



Trolley Cylinder  
FOAM 25Ltr



lxbxh: 420x380x580cm  
Weight: 51KG  
01 Pc/carton  
Cbm: 0.092568



Trolley Cylinder  
FOAM 50Ltr



lxbxh: 420x380x850cm  
Weight: 83KG  
01 Pc/carton  
Cbm: 0.13566

## WET CHEMICAL EXTINGUISHERS



2Kg (Class -K)



lxbxh: 125x115x415cm  
Weight: 3,8KG  
01 Pc/carton  
Cbm: 0.00596525



6Kg (Class -K)



lxbxh: 483x229x178cm  
Weight: 10.6KG  
01 Pc/carton  
Cbm: 0.019688046



APPROVED



# FIRE ALARMS AND DEVICES

## HEAT & SMOKE DETECTORS



Conventional Smoke Detector

### FEATURES:

- Responds well to slow-burning, smoldering fires.
- Well suited for bedrooms and escape routes.
- Wide operating voltage.
- Flashing LED option.
- Made in China.



lxbxh: 58.5x20x58cm  
Weight: 16.3KG  
100 Pcs/carton  
Cbm: 0.030888



MAF Conventional Heat Detector

### FEATURES:

- Can be used for applications where smoke detectors are unsuitable.
- Ideal environments that are dirty or smokey under normal conditions.
- Flashing LED option.
- Wide operating voltage.
- Made in China.



lxbxh: 46x30x58cm  
Weight: 16.3KG  
100 Pcs/carton  
Cbm: 0.08004



Battery-Operated Smoke Detector

### FEATURES:

- DC 9V optional standalone smoke detector.
- Photoelectric or ionization sensor.
- Protection Area : 6m high.
- Pulsing LED sensing chamber.
- Ceiling mounted.
- Made in China.



lxbxh: 58.5x24x22cm  
Weight: 8KG  
50 Pcs/carton  
Cbm: 0.030888



MAF Battery-Operated Heat Detector

### FEATURES:

- 135°F fixed temperature.
- Solid-state LED condition indicator.
- Mounting hardware adapts to standard junction boxes.
- Quick-disconnect wiring harness.
- Made in China.



lxbxh: 46x30x58cm  
Weight: 8KG  
50 Pcs/carton  
Cbm: 0.08004

## FIRE INDICATORS

Conventional Break Glass (MCP)



lxbxh: 86x87x30cm  
Weight: 8KG  
50 Pcs/carton  
Cbm: 0.22446



### FEATURES:

- Manual call points are highly reliable and easy to install.
- Available for flush or surface mounting.
- DC24V OR AC220V powered, 2-wire connection.
- Suitable for most conventional fire alarm systems.
- Power supply non polar input
- Installation environment Indoor Dry Occasion
- The material of push button panel is plastic.
- Made in China.

LED Indicator



lxbxh: 87x87x30cm  
Weight: 8KG  
50 Pcs/carton  
Cbm: 0.22707



Conventional Sounder with flash



Weight: 10KG  
50 Pcs/carton



### FEATURES:

- Operating Voltage. : DC24 V
- Alarm Current: > 100 Ma
- Flash Intensity: > 100 times / minutes.
- Alarm Sound 105d B
- Installation: Wall Mounted
- Working Environment: 10C to +55C
- Dimension: 139X114X60H M M
- Power supply non polar input
- Installation environment: Indoor/ Dry Occasion
- Three kinds of alarm sound available.
- Made in China.

Protective Cover for MCP



lxbxh: 184x136x65cm  
Weight: 18KG  
23 Pcs/carton  
Cbm: 0.0162656



APPROVED

# FIRE ALARMS AND DEVICES

## FIRE ALARMS AND SIRENS

### Fire Alarm Bell Available: 6" & 8"



For 6" For 8"



Weight: 15KG 20Pcs/carton  
lxbhx: 40x32x30cm  
Weight: 18KG 20 Pcs/carton  
Cbm: 0.0384

#### FEATURES:

- Low current consumption- 11mA.
- Quickly and easily installed.
- Excellent sonorous tone up to 100dB (A) at 1m.
- Slim profile.
- Fully suppressed and polarised.
- Simple installation with multi-fixing base plate.
- Purpose-made weatherproof range.
- Made in China.

### Manual Rotary Bell



lxbhx: 15x18cm  
Weight: 1.5KG  
01 Pc/carton

### Fire Alarm Control Panel



#### FEATURES:

- Input Voltage: 230+ 10%Va.c. 50/60Hz
- Internal power supply 27Vd.c
- Total output current: 200mA@240VAC
- Auxiliary Output current: 27 Vd.c
- Zones: 2,4,8,16,18 & 24
- Capacity: High EMI immunity
- Max no. of devices per zone: 20
- Operating temperature: -10C to +55C
- Backup battery: DC24V
- Weight: 2700g /5190G
- Made in China.

### MS-490 Electric Siren



lxbhx: 15x22cm  
Weight: 4KG  
01 Pc/carton

### LK-120 Manual Siren

#### FEATURES:

LK-120 is designed to provide effective warning in applications where there is no power supply such as:

- Civil defense
- Camp sites.
- Mountain rescue.
- Frontier sentry and coast guard warning.

Being lightweight, it can be easily transported to remote locations and folds up to a small size for ease of handling.

#### SPECIFICATIONS:

- Sound Rating: 120±2dB(A) @1M
- Output Frequency: 600±20Hz
- Effective Range: 1.5km diameter
- Net Weight: 9Kg
- Carton Size: 45x37x58CM



lxbhx: 45x37x58cm  
Weight: 9KG  
01 Pc/carton  
Cbm: 0.09657



APPROVED

# FIRE ALARM CABLES

## FIRE RESISTANT SHIELDED CABLES



APPLICATION: **Fire Detection and alarm systems-**

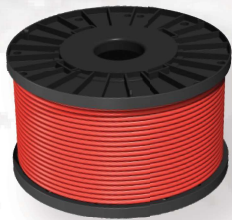
- Signaling line circuits,
- Notification appliance circuit,
- Modules and networking.

**Public address and voice evacuation systems-**

- Speaker circuits and networking.

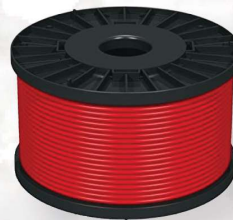
**Central battery and emergency lighting-**

- Standalone, networked and wireless systems.
- Access control, burglar alarm, gate barriers and various other applications.



Fire Alarm  
Cable (RED)

1.0mm X 2/2 Core



Fire Alarm  
Cable (RED)

1.5mm X 2/2 Core  
Available in: 100m & 500m rolls



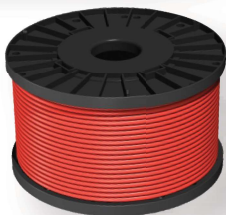
Fire Alarm  
Cable (WHITE)

1.5mm X 2/2 Core  
Available in: 100m & 300m rolls



Fire Alarm  
Cable (RED)

1.5mm X 2/3 Core  
Available in: 100m rolls



Fire Alarm  
Cable (RED)

1.5mm X 2/4 Core  
Available in: 100m, 300m, &  
500m rolls



Fire Alarm  
Cable (RED)

2.5mm X 2 Core  
Available in: 100m rolls



Fire Alarm  
Cable (RED)

2.5mm X 2 Core  
Available in: 100m rolls



Fire Alarm  
Cable (RED)

2.5mm X 2 Core  
Available in: 100m rolls



APPROVED



# FIRE ALARM BATTERIES

Battery Model	Volts	Ah	Terminal	Pcs/Pallet	Pcs/Carton	Net Weight	Gross Weight
WP1.2-6	6	6	#N/A	#N/A	#N/A	#N/A	#N/A
WP4.5-6	6	4.5	/F1 Terminal	1000	20	0.83	0.85
WP7-6	6	7	/F1 Terminal	600	10	1.25	1.30
WP12-6S	6	12	#N/A	480	10	#N/A	#N/A
WP1.2-12	12	1.2	/F1 Terminal	1260	20	0.56	0.59
WPS2.3-12	12	2.3	/F1 Terminal	#N/A	10	#N/A	#N/A
WP2.9-12T	12	2.9	/F1 Terminal	#N/A	#N/A	#N/A	#N/A
WP3-12	12	3	/F1 Terminal		10	1.27	1.32
WPS5-12	12	5	/F2 Terminal	600	10	1.64	1.69
WP5-12	12	5	#N/A	#N/A	#N/A	#N/A	#N/A
WP1224W	12	6	#N/A	#N/A	#N/A	#N/A	#N/A
WPS7-12	12	7	/F2 Terminal	360	5	2.10	2.20
WP7-12(28W)	12	7	/F2 Terminal	360	5	2.20	2.30
WP7.2-12	12	7.2	#N/A	#N/A	#N/A	#N/A	#N/A
WP1236W	12	9	/F2 Terminal	300	5	2.70	2.80
WP12-12A	12	12	/F2 Terminal	200	4	3.60	3.71
WP14-12SE	12	14	/F2 Terminal	#N/A	#N/A	#N/A	#N/A
WP18-12SHR	12	18	/Flag Terminal	144	2	5.66	5.79
WP20-12NE	12	20	/Insert Terminal M6	#N/A	#N/A	#N/A	#N/A
WP22-12NE	12	22	#N/A	#N/A	#N/A	#N/A	#N/A
WP26-12NB	12	26	/Insert Terminal M5	96	2	8.20	8.42
U1-33HN	12	33	#N/A	#N/A	#N/A	#N/A	10.1225
U1-36NE	12	36	#N/A	#N/A	#N/A	#N/A	11.04902778
WPS40-12N	12	40	/Insert Terminal M6	60	1	12.60	12.82
WP45-12N	12	45	/Insert Terminal M6	#N/A	#N/A	#N/A	#N/A
WP50-12NE	12	50	/Insert Terminal M6	#N/A	#N/A	#N/A	#N/A
WP55-12N	12	55	/Insert Terminal M6	40	1	17.00	17.28
WPL65-12AN	12	65	/Insert Terminal M6	36	1	20.90	21.31
KPH65-12N	12	65	#N/A	#N/A	#N/A	#N/A	#N/A
KPH75-12N	12	75	/Insert Terminal	32	1	25.24	25.59
KPH80-12N	12	80	#N/A	#N/A	#N/A	#N/A	#N/A
KPH100-12AN	12	100	/Insert Terminal M6	24	1	29.59	29.98
KPH110-12N	12	110	#N/A	#N/A	#N/A	#N/A	#N/A
WPL120-12RN	12	120	/Insert Terminal M8	20	1	36.93	37.39
KPH150-12N	12	150	#N/A	#N/A	#N/A	#N/A	46.491
WPL150-12N	12	150	/Insert Terminal M8	16	1	45.50	46.07
WPL200-12BN	12	200	/Insert Terminal M8	12	1	61.50	62.26
WPL230-12N	12	230	#N/A	#N/A	#N/A	#N/A	#N/A
LG24-12N	12	24	#N/A	#N/A	#N/A	#N/A	#N/A
LG32-12	12	32	#N/A	#N/A	#N/A	#N/A	#N/A
LG36-12N	12	36	#N/A	#N/A	#N/A	#N/A	#N/A



APPROVED

# FIRE ALARM BATTERIES

LG40-12N	12	40	#N/A	#N/A	#N/A	#N/A	#N/A
LG45-12N	12	45	#N/A	#N/A	#N/A	#N/A	#N/A
LG55-12N	12	100	#N/A	#N/A	#N/A	#N/A	#N/A
LGK100-12N	12	150	/Insert Terminal M6	24	1	34.80	35.22
LGL150-12N	12	150	/Insert Terminal M8	96	1	45.61	46.18
TPK12100A	12	100	#N/A	#N/A	#N/A	#N/A	#N/A
TPK12155	12	155	#N/A	#N/A	#N/A	#N/A	#N/A
TPK12125	12	125	#N/A	#N/A	#N/A	#N/A	40.381
TPK12150	12	150	#N/A	#N/A	#N/A	#N/A	49.631
NS40ZAL	12	40	#N/A	#N/A	#N/A	#N/A	#N/A
N50L	12	50	N50L	48	1	9.70	9.89
N70L	12	70	N70L	42	1	12.48	12.73
N100	12	100	N100L	30	1	16.53	16.80
N150	12	150	N150L	24	1	28.11	28.71
N200	12	200	N200L	18	1	38.17	38.92
WP4A-BS	12	#N/A	#N/A	#N/A	#N/A	#N/A	#N/A
WP4B-5	12	#N/A	#N/A	#N/A	#N/A	#N/A	#N/A
CWP100-12N	12	100	/Insert Terminal M6	24	1	34.20	34.62





# FIRE SPRINKLER SYSTEMS

## AUTOMATIC FIRE SPRINKLERS & FITTINGS



### FEATURES:

- Small orifice, Standard and Quick response, Spray sprinkler.
- Designed for use in ordinary hazard occupancies.
- Requires less water than standard K=5.6 orifice sprinkler.
- Chrome, Brass, White painting are available.
- UL Civil defense approved.
- Made in China.



APPROVED



# FIRE HOSES

## FIRE HOSE REELS & CABINETS



### Manual & Automatic Swing Fire Hose Reel

Manual Hose Reel



Automatic Hose Reel



#### FEATURES:

- Wall mounted and fixed in a permanent location or Recessed mounted into the hose reel cabinet.
- Manufacture compliant with BS EN 671 for LPCB certification. Hose reel discs are manufactured using 1.2mm electro galvanized steel sheets and has ribs that gave extra strength to avoid twisting.
- Hose has working pressure of 12 bar and bursting pressure of 42 bar with red in colour.
- Inlet stop valve 1" size. Made of brass and finished with chrome.

#### SPECIFICATIONS

- Hose size 25mm x 30m.
- Hose Reel size (L x V x D) 625\*600\*260MM
- Hose ID 25mm
- Hose OD 32mm
- Nozzle Diameter 8MM
- Nozzle Inlet Size 25MM (1")
- Nozzle flow rate 2 bar /6 bar
- Throw range at 2 bar 11.2m

### SINGLE CABINET FOR FIRE HOSE REEL



#### FEATURES:

- Applicable for all type of Hose Reels.
- Applicable for all type of Hoses & Rack Assembly
- Custom make with different sizes

#### OPTIONS AVAILABLE:

- MS Red Powder Coated
- Mild Steel
- Mirror Fished



APPROVED

# FITTINGS AND PARTS

## VALVES AND PRESSURE GAUGES



DCP Cylinder Valve  
1KG - 12KG



DCP Trolley Valve  
25KG - 100KG



Foam Cylinder Valve  
6L - 9L



Co2 Cylinder Valve  
2KG - 6.5KG



Co2 Trolley Valve  
10KG - 50KG



Foam Trolley Valve  
25L - 100L



Water Cylinder Valve  
6L - 9L



Pressure Gauge



Pressure Gauge (Plastic)

For DCP, Foam, Water and Wet Chemical  
Extinguishers  
Size: 10mm



# FITTINGS AND PARTS

## WASHERS & HOSES FOR CYLINDER AND VALVES



Rubber Washer for  
Cylinder Valves



Water Extinguisher  
Hose



DCP Hose  
4KG - 9KG



DCP Trolley  
Hose



Rubber Washer for  
Cylinder Valves



Rubber Washer for  
Cylinder Valves



Rubber Washer for  
Cylinder Valves



Rubber Washer for  
Cylinder Valves



Rubber Washer for  
Cylinder Valves



DCP Cylinder Nozzles  
1KG & 2KG





# FITTINGS AND PARTS



Hanging Hooks  
(Co2 & DCP)



Steel Safety Pin  
(Trolley & Extinguisher)



Safety Tags  
(Cylinders)



Dip Tubes



LED Seals  
(Cylinders)



Inspection Tags  
(Aluminium)



Cabinets for  
Extinguishers

Available in single or double  
piece



Stands for  
Extinguishers

Available in single or double  
piece









+971 557983435



+971 557983433

+971 4 2243320



alanwarj@eim.ae



smbtrd2@gmail.com



<https://www.smbtrd.com/>

