

SPECTRUM CONCRETE PRODUCTS

Concrete Accessories & Steel Fabrication



Stock List & Buying Guide



Manufacturing • Distribution • Rentals

*The Best Choice For Concrete
Accessories & Steel Fabrication*

Spectrum provides manufacturing and fabrication of structural and forming steel products for all of your concrete projects. Specialty items for projects including bridgework, light and heavy duty wall forming, tilt-up, parking structures and water treatment plants. Our goal is to help you increase your productivity and profitability with every job!



Steel Strongbacks/Double-Channel Walers

Hand Rail Posts/Safety Rail Brackets

Bridge Overhang Brackets

Edge of Deck Forms

Falsework Stripping Baskets

Adjustable Overhang Supports/Push-Pull Braces

Beam Ends & Special Beams

Lackey Brackets

Pre Stress Brace Plates

Plate Cups & Falsework Connectors

Skip Boxes/Material Bins

Friction Collars

Kip Jacks

Haunch Brackets

Embed Plates



**13407 YORBA AVENUE
CHINO, CA 91710**

**(909) 590-0066
FAX (909) 590-0061**

SPECTRUMCONCRETEUSA.COM



SPECTRUM CONCRETE PRODUCTS, LLC

Concrete Accessories & Steel Fabrication

*"The Best Choice for Concrete
Accessories & Steel Fabrication!"*

CORPORATE OFFICE:

13407 Yorba Avenue
Chino, CA 91710

CONTACT US:

Phone: 909-590-0066

Fax: 909-590-0061

Measurement Notes

Common Decimal Equivalents

1/64" = 0.0156	3/8" = 0.375
1/32" = 0.0312	7/16" = 0.4375
1/16" = 0.0625	1/2" = 0.500
3/32" = 0.0937	9/16" = 0.5625
1/8" = 0.125	5/8" = 0.625
3/16" = 0.1875	11/16" = 0.6875
7/32" = 0.2187	3/4" = 0.750
1/4" = 0.250	13/16" = 0.8125
9/32" = 0.2812	7/8" = 0.875
5/16" = 0.3125	15/16" = 0.9375

How to Measure

- Tubing (Round, Square or Rectangle) is measured from the outer diameter or side of material
- Pipe (Standard, Galvanized or Aluminum) is measured from the inner diameter
- Ornamental tubing is typically tubing with 0.049 or 0.060 wall thickness
- Structural beams are measured by their depth (Top to Bottom height) and weight per foot (I.E., W8X15 is an 8" Beam that weighs 15 pounds per foot)
- Structural Channel is measured by their depth (Top to Bottom height) and the weight per foot (I.E., C3X4.1 is a 3" Channel that weighs 4.1 pounds per foot)

Steel Sheets

Gauge	Thickness Tolerance	Weight/ Sq. Foot
10	0.1425 0.1265	5.625
11	0.1276 0.1116	5.000
12	0.1126 0.0966	4.375
13	0.0967 0.0827	3.750
14	0.0817 0.677	3.125
16	0.0658 0.0538	2.500
18	0.0528 0.0428	2.000
20	0.0389 0.0329	1.500
22	0.0329 0.0269	1.250
24	0.0269 0.0209	1.000
26	0.0199 0.0159	0.750
28	0.0169 0.0129	0.625

Galvanized Sheets

Thickness Tolerance	Gauge
0.1472 0.1292	5.781
0.1323 0.1143	5.156
0.1323 0.1143	4.531
0.1174 0.0994	3.906
0.1014 0.0854	3.281
0.0865 0.0705	2.656
0.566 0.0466	2.156
0.0436 0.0356	1.656
0.0376 0.0296	1.406
0.0136 0.0236	1.156
0.0247 0.0187	0.906
0.0217 0.0157	0.781

Services We Offer

- Welding — MIG, Stick, TIG, Stainless Steel, Stud
- Saw, CNC Plasma & CNC Flame Cutting
- Bending & Forming
- Drilling & Multi-Punching
- Threading & Tapering
- Plate Shearing & Rolling
- Painting, Plating, & Rolling
- Reworking Your Damaged Parts

Table of Contents

SECTION 1

CARBON & GALVANIZED STEEL

TUBING

SQUARE TUBE	5
RECTANGULAR TUBE	8
ROUND TUBE	12

PIPE	14
------	----

ANGLE

EQUAL LEGS	15
UNEQUAL LEGS	17

CHANNEL

BAR & STRUCTURAL CHANNEL	19
JUNIOR & MISCELLANEOUS CHANNEL	20

BEAM

WIDE FLANGE BEAM	21
STANDARD BEAM	24
JUNIOR & MISCELLANEOUS BEAM	25

HOT ROLL

FLAT BAR	26
SQUARE & ROUND BAR	31

SHEET & PLATE

HOT ROLL SHEET	32
GALVANIZED SHEET	33
COLD ROLL SHEET	34
A-36 HOT ROLL PLATE	35
DIAMOND PLATE	37

SECTION 2

ALUMINUM, COLD ROLL & STAINLESS STEEL

ALUMINUM

PIPE	39
CHANNEL	39
ANGLE	40
FLAT BAR	42
SQUARE BAR	45
ROUND BAR	45

COLD ROLL

FLAT BAR	46
SQUARE BAR	48
ROUND BAR	49

STAINLESS STEEL

SHEET	51
FLAT BAR	52

Square Tubing



ASTM A-500 • A-36 SQUARE TUBE

DIMENSIONS		WALL THICKNESS	LBS./FOOT
1/2 x 1/2	X	0.049	0.3005
1/2 x 1/2	X	0.060	0.3845
5/8 x 5/8	X	0.049	0.3838
5/8 x 5/8	X	0.060	0.4950
3/4 x 3/4	X	0.049	0.4671
3/4 x 3/4	X	0.060	0.6055
3/4 x 3/4	X	0.083	0.7530
3/4 x 3/4	X	0.090	0.8563
3/4 x 3/4	X	0.120	1.020
7/8 x 7/8	X	0.049	0.5504
7/8 x 7/8	X	0.060	0.7160
1 x 1	X	0.049	0.6337
1 x 1	X	0.060	0.8270
1 x 1	X	0.075	0.9090
1 x 1	X	0.083	1.035
1 x 1	X	0.090	1.169
1 x 1	X	0.120	1.436
1-1/4 x 1-1/4	X	0.049	0.8000
1-1/4 x 1-1/4	X	0.060	1.047
1-1/4 x 1-1/4	X	0.075	1.110
1-1/4 x 1-1/4	X	0.083	1.317
1-1/4 x 1-1/4	X	0.090	1.443
1-1/4 x 1-1/4	X	0.120	1.844
1-1/4 x 1-1/4	X	0.188	2.610
1-1/2 x 1-1/2	X	0.049	0.9670
1-1/2 x 1-1/2	X	0.060	1.268
1-1/2 x 1-1/2	X	0.075	1.350
1-1/2 x 1-1/2	X	0.083	1.600
1-1/2 x 1-1/2	X	0.090	1.815
1-1/2 x 1-1/2	X	0.120	2.252
1-1/2 x 1-1/2	X	0.188	3.350
1-1/2 x 1-1/2	X	0.250	4.250

SPECTRUM STOCKS 20' LENGTHS

PLEASE LET US KNOW IF YOU NEED A DIFFERENT SIZE
 PRICES ARE SUBJECT TO AVAILABILITY OR SPECIAL ORDERING

Square Tubing



ASTM A-500 • A-36 SQUARE TUBE

DIMENSIONS		WALL THICKNESS	LBS./FOOT
1-3/4 x 1-3/4	X	0.060	1.490
1-3/4 x 1-3/4	X	0.090	2.138
1-3/4 x 1-3/4	X	0.120	2.660
2 x 2	X	0.060	1.710
2 x 2	X	0.075	1.850
2 x 2	X	0.083	2.164
2 x 2	X	0.090	2.316
2 x 2	X	0.120	3.068
2 x 2	X	0.188	4.432
2 x 2	X	0.250	5.410
2-1/2 x 2-1/2	X	0.120	3.910
2-1/2 x 2-1/2	X	0.188	5.610
2-1/2 x 2-1/2	X	0.250	7.110
3 x 3	X	0.060	2.594
3 x 3	X	0.083	3.292
3 x 3	X	0.090	3.753
3 x 3	X	0.120	4.700
3 x 3	X	0.188	6.870
3 x 3	X	0.250	8.810
3-1/2 x 3-1/2	X	0.120	5.516
3-1/2 x 3-1/2	X	0.188	8.150
3-1/2 x 3-1/2	X	0.250	10.510
4 x 4	X	0.083	4.422
4 x 4	X	0.120	6.330
4 x 4	X	0.188	9.450
4 x 4	X	0.250	12.210
4 x 4	X	0.375	17.270
4 x 4	X	0.500	21.630
4-1/2 x 4-1/2	X	0.188	10.700
4-1/2 x 4-1/2	X	0.250	13.910

SPECTRUM STOCKS 20' LENGTHS
 PLEASE LET US KNOW IF YOU NEED A DIFFERENT SIZE
 PRICES ARE SUBJECT TO AVAILABILITY OR SPECIAL ORDERING

Square Tubing



ASTM A-500 • A-36 SQUARE TUBE

DIMENSIONS		WALL THICKNESS	LBS./FOOT
5 x 5	X	0.188	11.970
5 x 5	X	0.250	15.620
5 x 5	X	0.375	22.370
6 x 6	X	0.188	14.560
6 x 6	X	0.250	19.020
6 x 6	X	0.375	27.480
6 x 6	X	0.500	35.240
7 x 7	X	0.188	17.130
7 x 7	X	0.250	22.420
7 x 7	X	0.500	42.050
8 x 8	X	0.250	25.820
8 x 8	X	0.500	48.850
10 x 10	X	0.250	36.630
10 x 10	X	0.375	47.900
10 x 10	X	0.500	62.460
12 x 12	X	0.250	39.440
12 x 12	X	0.375	58.100
12 x 12	X	0.500	76.070
14 x 14	X	0.250	45.830
14 x 14	X	0.500	90.770
16 x 16	X	0.250	52.630
16 x 16	X	0.500	104.030

SPECTRUM STOCKS 20' LENGTHS
 PLEASE LET US KNOW IF YOU NEED A DIFFERENT SIZE
 PRICES ARE SUBJECT TO AVAILABILITY OR SPECIAL ORDERING

Rectangular Tubing

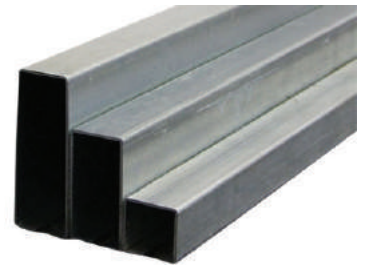


ASTM A-500 • A-36 RECTANGULAR TUBE

DIMENSIONS		WALL THICKNESS	LBS./FOOT
1/2 x 1	X	0.060	0.5520
1/2 x 1-1/2	X	0.060	0.7630
3/4 x 1-1/2	X	0.060	0.8790
3/4 x 1-1/2	X	0.075	1.087
3/4 x 1-1/2	X	0.120	1.640
1 x 1-1/2	X	0.049	0.8070
1 x 1-1/2	X	0.060	0.9810
1 x 1-1/2	X	0.090	1.490
1 x 1-1/2	X	0.120	1.844
1 x 2	X	0.060	1.163
1 x 2	X	0.075	1.442
1 x 2	X	0.083	1.589
1 x 2	X	0.090	1.716
1 x 2	X	0.120	2.252
1 x 3	X	0.060	1.564
1 x 3	X	0.075	2.000
1 x 3	X	0.083	2.164
1 x 3	X	0.090	2.461
1 x 3	X	0.120	3.050
1 x 4	X	0.060	1.964
1 x 4	X	0.120	3.884
1-1/2 x 2	X	0.060	1.400
1-1/2 x 2	X	0.090	2.138
1-1/2 x 2	X	0.120	2.660
1-1/2 x 2-1/2	X	0.060	1.564
1-1/2 x 2-1/2	X	0.083	2.164
1-1/2 x 2-1/2	X	0.120	3.068
1-1/2 x 2-1/2	X	0.188	4.490

SPECTRUM STOCKS 20' LENGTHS
 PLEASE LET US KNOW IF YOU NEED A DIFFERENT SIZE
 PRICES ARE SUBJECT TO AVAILABILITY OR SPECIAL ORDERING

Rectangular Tubing

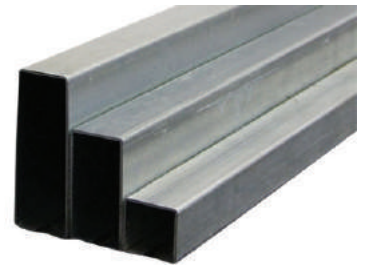


ASTM A-500 • A-36 RECTANGULAR TUBE

DIMENSIONS		WALL THICKNESS	LBS./FOOT
1-1/2 x 3	X	0.060	1.750
1-1/2 x 3	X	0.090	2.784
1-1/2 x 3	X	0.120	3.476
1-1/2 x 3	X	0.188	5.070
1-1/2 x 4	X	0.083	3.011
1-1/2 x 4	X	0.120	4.292
2 x 3	X	0.060	2.150
2 x 3	X	0.090	3.107
2 x 3	X	0.120	3.884
2 x 3	X	0.188	5.590
2 x 3	X	0.250	7.110
2 x 4	X	0.060	2.595
2 x 4	X	0.120	4.700
2 x 4	X	0.188	6.870
2 x 4	X	0.250	8.810
2 x 5	X	0.120	5.516
2 x 5	X	0.188	8.150
2 x 5	X	0.250	10.51
2 x 5	X	0.312	12.70
2 x 6	X	0.083	4.420
2 x 6	X	0.120	6.210
2 x 6	X	0.188	9.420
2 x 6	X	0.250	12.21
2 x 8	X	0.188	11.97
2 x 8	X	0.250	15.62
2 x 10	X	0.188	14.53
2 x 10	X	0.250	19.02
2-1/2 x 3-1/2	X	0.188	6.903

SPECTRUM STOCKS 20' LENGTHS
 PLEASE LET US KNOW IF YOU NEED A DIFFERENT SIZE
 PRICES ARE SUBJECT TO AVAILABILITY OR SPECIAL ORDERING

Rectangular Tubing



ASTM A-500 • A-36 RECTANGULAR TUBE

DIMENSIONS		WALL THICKNESS	LBS./FOOT
3 x 4	X	0.120	5.516
3 x 4	X	0.188	8.150
3 x 4	X	0.250	10.51
3 x 4	X	0.312	12.70
3 x 5	X	0.120	6.330
3 x 5	X	0.188	9.420
3 x 5	X	0.250	12.21
3 x 5	X	0.312	14.83
3 x 5	X	0.375	17.27
3 x 6	X	0.120	7.148
3 x 6	X	0.188	10.70
3 x 6	X	0.250	13.91
3 x 6	X	0.375	19.82
3 x 8	X	0.188	13.25
3 x 8	X	0.250	17.32
3 x 8	X	0.375	24.93

Services We Offer

- Welding — MIG, Stick, TIG, Stainless Steel, Stud
- Saw, CNC Plasma & CNC Flame Cutting
- Bending & Forming
- Drilling & Multi-Punching
- Threading & Tapering
- Plate Shearing & Rolling
- Painting, Plating, & Rolling
- Reworking Your Damaged Parts

SPECTRUM STOCKS 20' LENGTHS
PLEASE LET US KNOW IF YOU NEED A DIFFERENT SIZE
PRICES ARE SUBJECT TO AVAILABILITY OR SPECIAL ORDERING

Rectangular Tubing



ASTM A-500 • A-36 RECTANGULAR TUBE

DIMENSIONS		WALL THICKNESS	LBS./FOOT
4 x 5	X	0.188	10.70
4 x 5	X	0.250	13.91
4 x 6	X	0.120	8.200
4 x 6	X	0.188	11.97
4 x 6	X	0.250	15.60
4 x 6	X	0.375	22.37
4 x 6	X	0.500	28.40
4 x 8	X	0.188	14.53
4 x 8	X	0.125	19.02
4 x 8	X	0.375	27.48
4 x 8	X	0.500	35.24
4 x 10	X	0.188	17.08
4 x 10	X	0.250	22.42
4 x 10	X	0.313	27.59
4 x 10	X	0.375	32.58
4 x 12	X	0.250	25.82
4 x 12	X	0.375	37.69
5 x 10	X	0.250	24.12
5 x 10	X	0.375	34.27
6 x 8	X	0.250	22.42
6 x 8	X	0.375	32.58
6 x 8	X	0.500	42.05
6 x 10	X	0.188	19.65
6 x 10	X	0.250	25.82
8 x 10	X	0.375	42.79
8 x 10	X	0.500	55.65

SPECTRUM STOCKS 20' LENGTHS
 PLEASE LET US KNOW IF YOU NEED A DIFFERENT SIZE
 PRICES ARE SUBJECT TO AVAILABILITY OR SPECIAL ORDERING

Round Tubing



ASTM A-500 • A-36 ROUND TUBE

DIMENSIONS		WALL THICKNESS	LBS./FOOT
1/2"	X	0.049	0.2360
1/2"	X	0.060	0.2850
5/8"	X	0.049	0.3015
5/8"	X	0.060	0.3650
3/4"	X	0.049	0.3668
3/4"	X	0.060	0.4620
3/4"	X	0.075	0.5405
3/4"	X	0.090	0.6646
7/8"	X	0.049	0.4323
7/8"	X	0.065	0.5623
7/8"	X	0.075	0.6410
1"	X	0.049	0.4977
1"	X	0.060	0.6280
1"	X	0.083	0.8129
1"	X	0.090	0.9182
1"	X	0.120	1.128
1-1/8"	X	0.060	0.7010
1-1/4"	X	0.049	0.6285
1-1/4"	X	0.060	0.7890
1-1/4"	X	0.083	1.034
1-1/4"	X	0.090	1.172
1-1/4"	X	0.120	1.448
1-1/2"	X	0.060	0.9580
1-1/2"	X	0.083	1.256
1-1/2"	X	0.090	1.426
1-1/2"	X	0.120	1.769
1-1/2"	X	0.188	2.634

SPECTRUM STOCKS 20' LENGTHS
 PLEASE LET US KNOW IF YOU NEED A DIFFERENT SIZE
 PRICES ARE SUBJECT TO AVAILABILITY OR SPECIAL ORDERING

Round Tubing



ASTM A-500 • A-36 ROUND TUBE

DIMENSIONS		WALL THICKNESS	LBS./FOOT
1-5/8"	X	0.090	1.552
1-3/4"	X	0.060	1.050
1-3/4"	X	0.090	1.600
1-3/4"	X	0.120	2.089
2"	X	0.035	0.734
2"	X	0.049	1.021
2"	X	0.060	1.343
2"	X	0.090	1.933
2"	X	0.120	2.409
2-1/8"	X	0.049	1.086
2-1/4"	X	0.120	2.730
2-1/2"	X	0.060	1.690
2-1/2"	X	0.120	3.050
3"	X	0.060	1.975
3"	X	0.090	2.947
3"	X	0.120	3.691
4"	X	0.120	4.973
5"	X	0.120	6.254
5"	X	0.188	9.662
6"	X	0.120	7.536
6"	X	0.188	11.67

SPECTRUM STOCKS 20' LENGTHS
 PLEASE LET US KNOW IF YOU NEED A DIFFERENT SIZE
 PRICES ARE SUBJECT TO AVAILABILITY OR SPECIAL ORDERING

Welded Pipe



INNER DIA.	OUTER DIA.	SCH. 10 WALL	SCH. 40 WALL	SCH. 80 WALL	LBS./FOOT (SCH.10)	LBS./FOOT (SCH.40)	LBS./FOOT (SCH.80)
1/8"	0.405	0.049	0.068	0.095	0.1863	0.2477	0.3145
1/4"	0.540	0.065	0.088	0.119	0.3297	0.4248	0.5351
3/8"	0.675	0.065	0.091	0.126	0.4225	0.565	0.7388
1/2"	0.840	0.083	0.109	0.147	0.6710	0.851	1.088
3/4"	1.050	0.083	0.113	0.154	0.8572	1.130	1.474
1"	1.315	0.109	0.133	0.179	1.404	1.680	2.172
1-1/4"	1.660	0.109	0.140	0.191	1.806	2.273	2.997
1-1/2"	1.900	0.109	0.147	0.200	2.085	2.718	3.631
2"	2.375	0.109	0.154	0.218	2.638	3.653	5.022
2-1/2"	2.875	0.120	0.203	0.276	3.531	5.793	7.661
3"	3.500	0.120	0.216	0.300	4.332	7.576	10.25
3-1/2"	4.000	0.120	0.226	0.318	4.973	9.109	12.51
4"	4.500	0.120	0.237	0.337	5.613	10.79	14.98
5"	5.563	0.134	0.258	0.375	7.770	14.62	20.78
6"	6.625	0.134	0.280	0.432	9.289	18.97	28.57
8"	8.625	0.148	0.322	0.500	13.40	28.55	43.39
10"	10.75	0.165	0.365	0.594	18.65	40.48	64.33
12"	12.75	0.180	0.406	0.688	24.16	53.52	88.51

WE CARRY UNCOATED PIPE, GRADE B PIPE, AND GALVANIZED PIPE. WE CAN SPECIAL ORDER VARYING LENGTHS OF PIPE LISTED ABOVE.

SPECTRUM STOCKS 21' LENGTHS
PLEASE LET US KNOW IF YOU NEED A DIFFERENT SIZE
PRICES ARE SUBJECT TO AVAILABILITY OR SPECIAL ORDERING

Hot Roll Angle



EQUAL LEGS ANGLE

DIMENSIONS		THICKNESS	LBS./FOOT	LBS./LENGTH (20')
1/2 x 1/2	X	1/8	0.380	7.60
3/4 x 3/4	X	1/8	0.590	11.80
1 x 1	X	1/8	0.800	16.00
1 x 1	X	3/16	1.16	23.20
1 x 1	X	1/4	1.49	29.80
1-1/4 x 1-1/4	X	1/8	1.01	20.20
1-1/4 x 1-1/4	X	3/16	1.48	29.60
1-1/4 x 1-1/4	X	1/4	1.92	38.40
1-1/2 x 1-1/2	X	1/8	1.23	24.60
1-1/2 x 1-1/2	X	3/16	1.80	36.00
1-1/2 x 1-1/2	X	1/4	2.34	46.80
1-1/2 x 1-1/2	X	3/8	3.35	67.00
1-3/4 x 1-3/4	X	1/8	1.44	28.80
1-3/4 x 1-3/4	X	3/16	2.12	42.40
1-3/4 x 1-3/4	X	1/4	2.77	55.40
2 x 2	X	1/8	1.65	33.00
2 x 2	X	3/16	2.44	48.80
2 x 2	X	1/4	3.19	63.80
2 x 2	X	3/8	4.70	94.00
2-1/2 x 2-1/2	X	3/16	3.07	61.40
2-1/2 x 2-1/2	X	1/4	4.10	82.00
2-1/2 x 2-1/2	X	3/8	5.90	118.0
2-1/2 x 2-1/2	X	1/2	7.70	154.0
3 x 3	X	3/16	3.71	74.20
3 x 3	X	1/4	4.90	98.00
3 x 3	X	5/16	6.10	122.0
3 x 3	X	3/8	7.20	144.0
3 x 3	X	1/2	9.40	188.0

SPECTRUM STOCKS 20' LENGTHS
PLEASE LET US KNOW IF YOU NEED A DIFFERENT SIZE
PRICES ARE SUBJECT TO AVAILABILITY OR SPECIAL ORDERING

Hot Roll Angle



EQUAL LEGS ANGLE

DIMENSIONS		THICKNESS	LBS./FOOT	LBS./LENGTH (20')
3-1/2 x 3-1/2	X	1/4	5.80	116.0
3-1/2 x 3-1/2	X	3/8	8.50	170.0
3-1/2 x 3-1/2	X	1/2	11.1	222.0
4 x 4	X	1/4	6.60	132.0
4 x 4	X	5/16	8.20	164.0
4 x 4	X	3/8	9.80	196.0
4 x 4	X	1/2	12.8	256.0
4 x 4	X	5/8	15.7	314.0
4 x 4	X	3/4	18.5	370.0
5 x 5	X	5/16	10.3	206.0
5 x 5	X	3/8	12.3	246.0
5 x 5	X	1/2	16.2	324.0
5 x 5	X	5/8	20.0	400.0
5 x 5	X	3/4	23.6	472.0
6 x 6	X	5/16	12.4	248.0
6 x 6	X	3/8	14.9	298.0
6 x 6	X	1/2	19.6	392.0
6 x 6	X	5/8	24.2	484.0
6 x 6	X	3/4	28.7	574.0
6 x 6	X	1	37.4	748.0
8 x 8	X	1/2	26.4	528.0
8 x 8	X	5/8	32.7	654.0
8 x 8	X	3/4	38.9	778.0
8 x 8	X	1	51.0	1020.0

SPECTRUM STOCKS 20' LENGTHS
 PLEASE LET US KNOW IF YOU NEED A DIFFERENT SIZE
 PRICES ARE SUBJECT TO AVAILABILITY OR SPECIAL ORDERING

Hot Roll Angle



UNEQUAL LEGS ANGLE

DIMENSIONS		THICKNESS	LBS./FOOT	LBS./LENGTH (20')
2 x 1-1/2	X	1/8	1.44	28.80
2 x 1-1/2	X	3/16	2.12	42.40
2 x 1-1/2	X	1/4	2.77	55.40
2-1/2 x 1-1/2	X	3/16	2.44	48.80
2-1/2 x 1-1/2	X	1/4	3.19	63.80
2-1/2 x 2	X	3/16	2.75	55.00
2-1/2 x 2	X	1/4	3.62	72.40
2-1/2 x 2	X	3/8	5.30	106.00
3 x 2	X	3/16	3.07	61.40
3 x 2	X	1/4	4.10	82.00
3 x 2	X	3/8	5.90	118.00
3 x 2	X	1/2	7.70	154.00
3 x 2-1/2	X	3/16	3.39	67.80
3 x 2-1/2	X	1/4	4.50	90.00
3 x 2-1/2	X	3/8	6.60	132.00
3 x 2-1/2	X	1/2	8.50	170.00
3-1/2 x 2-1/2	X	1/4	4.90	98.00
3-1/2 x 2-1/2	X	3/8	7.20	144.00
3-1/2 x 2-1/2	X	1/2	9.40	188.00
3-1/2 x 3	X	1/4	5.40	108.00
3-1/2 x 3	X	3/8	7.90	158.00
3-1/2 x 3	X	1/2	10.20	204.00
4 x 3	X	1/4	5.80	116.00
4 x 3	X	3/8	8.50	170.00
4 x 3	X	1/2	11.10	222.00
4 x 3-1/2	X	1/4	6.20	124.00
4 x 3-1/2	X	1/2	11.90	238.00

SPECTRUM STOCKS 20' LENGTHS
PLEASE LET US KNOW IF YOU NEED A DIFFERENT SIZE
PRICES ARE SUBJECT TO AVAILABILITY OR SPECIAL ORDERING

Hot Roll Angle



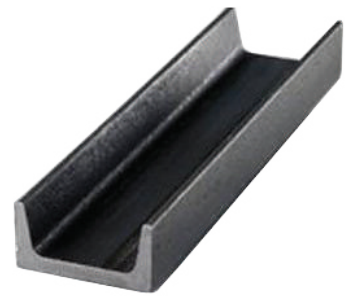
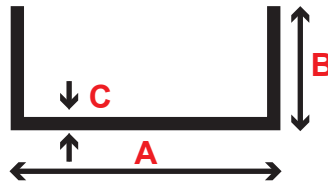
UNEQUAL LEGS ANGLE

DIMENSIONS		THICKNESS	LBS./FOOT	LBS./LENGTH (20')
5 x 3	X	1/4	6.60	132.00
5 x 3	X	3/8	9.80	196.00
5 x 3	X	1/2	12.80	256.00
5 x 3-1/2	X	1/4	7.00	140.00
5 x 3-1/2	X	3/8	10.40	208.00
5 x 3-1/2	X	1/2	13.60	272.00
6 x 3-1/2	X	1/4	7.90	158.00
6 x 3-1/2	X	5/16	9.80	196.00
6 x 3-1/2	X	3/8	11.70	234.00
6 x 3-1/2	X	1/2	15.30	306.00
6 x 4	X	5/16	10.30	206.00
6 x 4	X	3/8	12.30	246.00
6 x 4	X	1/2	16.20	324.00
6 x 4	X	5/8	20.00	400.00
6 x 4	X	3/4	23.60	472.00
6 x 4	X	1	30.60	612.00
7 x 4	X	3/8	13.60	272.00
7 x 4	X	1/2	17.90	358.00
7 x 4	X	5/8	22.10	442.00
7 x 4	X	3/4	26.20	524.00
8 x 4	X	1/2	19.60	392.00
8 x 4	X	5/8	24.20	484.00
8 x 4	X	3/4	28.70	574.00
8 x 4	X	1	37.40	748.00
8 x 6	X	1/2	23.00	460.00
8 x 6	X	5/8	28.50	570.00
8 x 6	X	3/4	33.80	676.00
8 x 6	X	7/8	39.10	782.00
8 x 6	X	1	44.20	884.00
9 x 4	X	1/2	21.30	426.00
9 x 4	X	5/8	26.30	526.00

SPECTRUM STOCKS 20' LENGTHS

PLEASE LET US KNOW IF YOU NEED A DIFFERENT SIZE
PRICES ARE SUBJECT TO AVAILABILITY OR SPECIAL ORDERING

Channel



BAR CHANNEL

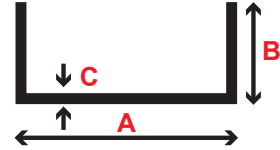
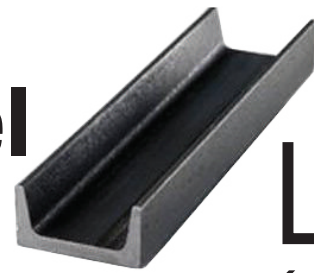
1 x 1/2 x 1/8	0.84 LB./FOOT	2 x 9/16 x 3/16	1.86 LB./FOOT
1-1/2 x 1/2 x 1/8	1.12 LB./FOOT	2 x 1 x 1/8	1.78 LB./FOOT
1-1/2 x 3/4 x 1/8	1.17 LB./FOOT	2 x 1 x 3/16	2.57 LB./FOOT

STRUCTURAL CHANNEL

SIZES IN INCHES		LBS. PER FOOT	A DEPTH IN INCHES	B FLANGE WIDTH	C WEB THICKNESS
3	X	4.1	3	1.410	0.170
3	X	5.0	3	1.498	0.258
3	X	6.0	3	1.596	0.356
4	X	5.4	4	1.584	0.184
4	X	6.25	4	1.647	0.247
4	X	7.25	4	1.721	0.321
5	X	6.7	5	1.750	0.190
5	X	9.0	5	1.885	0.325
6	X	8.2	6	1.920	0.200
6	X	10.5	6	2.034	0.314
6	X	13	6	2.157	0.437
7	X	9.8	7	2.090	0.210
8	X	11.5	8	2.260	0.220
8	X	13.75	8	2.343	0.303
9	X	13.4	9	1.433	0.233
10	X	15.3	10	2.600	0.240
10	X	20.0	10	2.739	0.379
10	X	25.0	10	2.886	0.526
12	X	12	12	2.942	0.282
12	X	12	12	3.047	0.387

PLEASE LET US KNOW IF YOU NEED A DIFFERENT SIZE
PRICES ARE SUBJECT TO AVAILABILITY OR SPECIAL ORDERING

Miscellaneous Channel



MISCELLANEOUS CHANNEL

SIZES IN INCHES	LBS. PER FOOT	A DEPTH IN INCHES	B FLANGE WIDTH	C WEB THICKNESS
-----------------	---------------	----------------------	-------------------	--------------------

JUNIOR CHANNEL

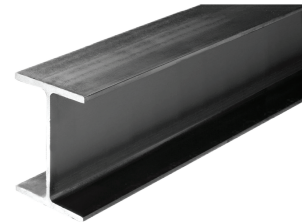
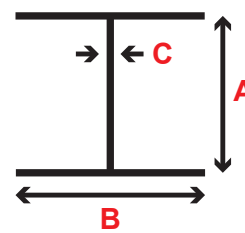
MC3	x	7.1	3	1.938	0.312
MC4	x	13.8	4	2.500	0.500
MC6	x	12	6	2.497	0.310
MC6	x	15.3	6	3.500	0.340
MC8	x	8.5	8	1.875	0.188
MC8	x	18.7	8	2.978	0.353
MC8	x	20	8	3.025	0.400
MC10	x	6.5	10	1.125	0.150
MC10	x	8.4	10	1.500	0.170
MC12	x	10.6	5	1.500	0.190

MISCELLANEOUS CHANNEL

MC6	x	15.3	6	3.500	0.340
MC6	x	16.3	6	3.000	0.375
MC8	x	20.0	8	3.025	0.400
MC8	x	21.4	8	3.450	0.375
MC8	x	22.8	8	3.502	0.427
MC10	x	22.0	10	3.376	0.312
MC10	x	28.5	10	3.950	0.425
MC12	x	35.0	12	3.767	0.467
MC13	x	31.8	13	4.000	0.375
MC18	x	42.7	18	3.950	0.450
MC18	x	58.0	18	4.200	0.700

PLEASE LET US KNOW IF YOU NEED A DIFFERENT SIZE
PRICES ARE SUBJECT TO AVAILABILITY OR SPECIAL ORDERING

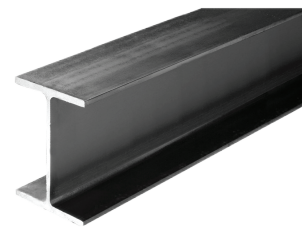
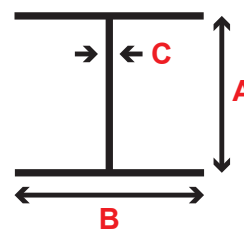
Wide Flange Beam



SIZES IN INCHES		LBS. PER FOOT	A DEPTH IN INCHES	B FLANGE WIDTH	C WEB THICKNESS
W4	X	13	4.16	4.060	0.280
W5	X	16	5.01	5.000	0.240
W5	X	19	5.15	5.030	0.270
W6	X	9	5.90	3.940	0.170
W6	X	12	6.03	4.000	0.230
W6	X	15	5.99	5.990	0.230
W6	X	16	6.28	4.030	0.260
W6	X	20	6.20	6.020	0.260
W6	X	25	6.38	6.080	0.320
W8	X	10	7.89	3.940	0.170
W8	X	13	7.99	4.000	0.230
W8	X	15	8.11	4.015	0.245
W8	X	18	8.14	5.250	0.230
W8	X	21	8.28	5.270	0.250
W8	X	24	7.93	6.495	0.245
W8	X	28	8.06	6.535	0.285
W8	X	31	8.00	7.995	0.285
W8	X	35	8.12	8.020	0.310
W8	X	40	8.25	8.070	0.360
W8	X	48	8.50	8.110	0.400
W10	X	12	9.87	3.960	0.190
W10	X	15	9.99	4.000	0.230
W10	X	17	10.11	4.010	0.240
W10	X	19	10.24	4.020	0.250
W10	X	22	10.17	5.750	0.240
W10	X	26	10.33	5.770	0.260
W10	X	30	10.47	5.810	0.300
W10	X	33	9.73	7.960	0.290
W10	X	39	9.92	7.985	0.315
W10	X	45	10.10	8.020	0.350
W10	X	49	9.98	10.00	0.340
W10	X	54	10.09	10.03	0.370
W10	X	60	10.22	10.08	0.420
W10	X	68	10.40	10.13	0.470

PLEASE LET US KNOW IF YOU NEED A DIFFERENT SIZE
 PRICES ARE SUBJECT TO AVAILABILITY OR SPECIAL ORDERING

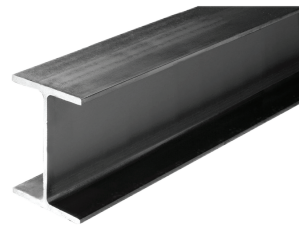
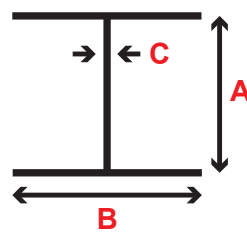
Wide Flange Beam



SIZES IN INCHES		LBS. PER FOOT	A DEPTH IN INCHES	B FLANGE WIDTH	C WEB THICKNESS
W12	X	14	11.91	3.970	0.200
W12	X	16	11.99	3.990	0.220
W12	X	19	12.16	4.005	0.235
W12	X	22	12.31	4.030	0.260
W12	X	26	12.22	6.490	0.230
W12	X	30	12.34	6.520	0.260
W12	X	35	12.50	6.560	0.300
W12	X	20	11.94	8.005	0.295
W12	X	45	12.06	8.045	0.335
W12	X	50	12.19	8.080	0.370
W12	X	53	12.06	9.995	0.345
W12	X	58	12.19	10.010	0.360
W12	X	65	12.12	12.000	0.390
W12	X	72	12.25	12.040	0.430
W12	X	79	12.38	12.080	0.470
W12	X	87	12.53	12.125	0.515
W12	X	96	12.71	12.160	0.550
W14	X	22	13.72	5.000	0.230
W14	X	26	13.91	5.025	0.255
W14	X	30	13.84	6.730	0.270
W14	X	34	13.98	6.745	0.285
W14	X	38	14.10	6.770	0.310
W14	X	43	13.66	7.995	0.305
W14	X	48	13.66	8.030	0.340
W14	X	53	13.92	8.060	0.370
W14	X	61	13.89	9.995	0.375
W14	X	68	14.04	10.035	0.415
W14	X	74	14.17	10.070	0.450
W16	X	26	15.69	5.500	0.250
W16	X	31	15.88	5.525	0.275
W16	X	36	15.86	6.985	0.295
W16	X	40	16.01	6.995	0.305
W16	X	45	16.13	7.035	0.345
W16	X	50	16.26	7.070	0.380
W16	X	57	16.43	7.120	0.430
W16	X	67	16.33	10.235	0.395
W16	X	77	16.52	10.295	0.455

PLEASE LET US KNOW IF YOU NEED A DIFFERENT SIZE
 PRICES ARE SUBJECT TO AVAILABILITY OR SPECIAL ORDERING

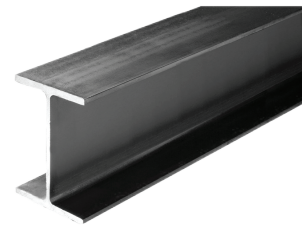
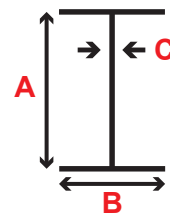
Wide Flange Beam



SIZES IN INCHES		LBS. PER FOOT	^A DEPTH IN INCHES	^B FLANGE WIDTH	^C WEB THICKNESS
W18	X	18	17.70	6.000	0.300
W18	X	40	17.90	6.015	0.315
W18	X	46	18.06	6.060	0.360
W18	X	50	17.99	7.495	0.355
W18	X	55	18.11	7.530	0.390
W18	X	60	18.24	7.555	0.415
W18	X	65	18.35	7.590	0.450
W18	X	71	18.47	7.635	0.495
W18	X	76	18.21	11.035	0.425
W18	X	86	18.39	11.090	0.480
W18	X	97	18.59	11.145	0.535
W18	X	106	18.73	11.200	0.590
W18	X	119	18.97	11.265	0.655
W21	X	44	20.66	6.500	0.350
W21	X	50	20.83	6.530	0.380
W21	X	57	21.06	6.555	0.405
W21	X	62	20.99	8.240	0.400
W21	X	68	21.13	8.270	0.430
W21	X	73	21.24	8.295	0.455
W21	X	83	21.43	8.355	0.515
W21	X	93	21.62	8.420	0.580
W21	X	101	21.36	12.290	0.500
W21	X	111	21.51	12.340	0.550
W21	X	122	21.68	12.390	0.600
W24	X	55	23.57	7.005	0.395
W24	X	62	23.74	7.040	0.430
W24	X	68	23.73	8.965	0.415
W24	X	76	23.92	8.990	0.440
W24	X	84	24.10	9.020	0.470
W24	X	94	24.31	9.065	0.515
W24	X	104	24.06	12.750	0.500
W27	X	84	26.71	9.960	0.460
W27	X	94	26.92	9.990	0.490
W27	X	102	27.09	10.015	0.515
W27	X	114	27.29	10.070	0.570
W27	X	146	27.38	13.965	0.605

PLEASE LET US KNOW IF YOU NEED A DIFFERENT SIZE
 PRICES ARE SUBJECT TO AVAILABILITY OR SPECIAL ORDERING

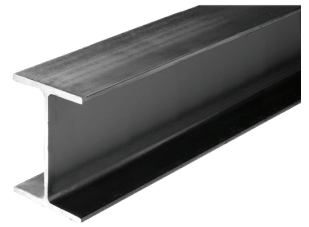
Standard I-Beam



SIZE IN INCHES		LBS. PER FOOT	A DEPTH IN INCHES	B FLANGE WIDTH	C WEB THICKNESS
S3	X	5.7	3	2.330	0.170
S3	X	7.5	3	2.509	0.349
S4	X	7.7	4	2.663	0.193
S4	X	9.5	4	2.796	0.326
S5	X	10.0	5	3.004	0.214
S5	X	14.75	5	3.284	0.494
S6	X	12.5	6	3.332	0.232
S6	X	17.25	6	3.565	0.465
S7	X	15.3	7	3.662	0.252
S7	X	20.0	7	3.860	0.450
S8	X	18.4	8	4.001	0.271
S8	X	23.0	8	4.171	0.441
S10	X	25.4	10	4.661	0.311
S10	X	35.0	10	4.944	0.594
S12	X	31.8	12	5.000	0.350
S12	X	35.0	12	5.078	0.428
S12	X	40.8	12	5.252	0.462
S12	X	50.0	12	5.477	0.687
S15	X	42.9	15	5.501	0.411
S15	X	50.0	15	5.640	0.550
S18	X	54.7	18	6.001	0.461
S18	X	70	18	6.251	0.711
S20	X	66	20	6.255	0.505
S24	X	80	24	7.000	0.500
S24	X	100	24	7.245	0.745
S24	X	106	24	7.870	0.620

PLEASE LET US KNOW IF YOU NEED A DIFFERENT SIZE
PRICES ARE SUBJECT TO AVAILABILITY OR SPECIAL ORDERING

Miscellaneous Beam

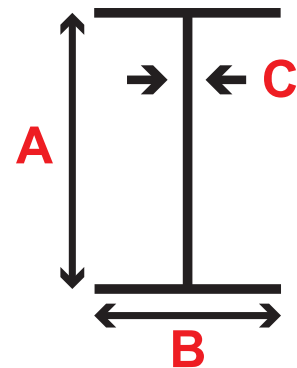


MISCELLANEOUS BEAM

SIZE IN INCHES		LBS. PER FOOT	A FLANGE DEPTH	B FLANGE WIDTH	C WEB THICKNESS
M4	x	13.0	4	3.940	0.254
M5	x	18.9	5	5.003	0.316
M6	x	4.4	6	1.844	0.114
M6	x	20.0	6.20	6.020	0.260
M7	x	5.5	7	2.125	0.125
M8	x	6.5	8	2.281	0.135
M10	x	9.0	10	2.690	0.157
M12	x	11.8	12	3.065	0.177
M14	x	17.2	14	4	0.188

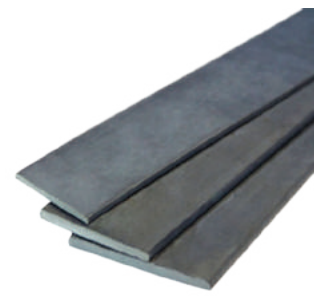
Services We Offer

- Welding — MIG, Stick, TIG, Stainless Steel, Stud
- Saw, CNC Plasma & CNC Flame Cutting
- Bending & Forming
- Drilling & Multi-Punching
- Threading & Tapering
- Plate Shearing & Rolling
- Painting, Plating, & Rolling
- Reworking Your Damaged Parts



PLEASE LET US KNOW IF YOU NEED A DIFFERENT SIZE
PRICES ARE SUBJECT TO AVAILABILITY OR SPECIAL ORDERING

Hot Roll Flat Bar



1/8" FLAT BAR

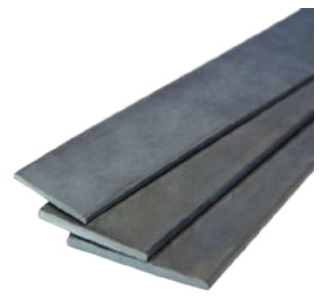
DIMENSIONS		LBS./FOOT	LBS. LENGTH (20')
1/8 x 1/2	X	0.213	4.26
1/8 x 5/8	X	0.266	5.32
1/8 x 3/4	X	0.319	6.38
1/8 x 1	X	0.425	8.50
1/8 x 1-1/4	X	0.531	10.62
1/8 x 1-1/2	X	0.638	12.76
1/8 x 1-3/4	X	0.744	14.88
1/8 x 2	X	0.850	17.00
1/8 x 2-1/2	X	1.063	21.26
1/8 x 3	X	1.275	25.50
1/8 x 3-1/2	X	1.488	29.76
1/8 x 4	X	1.700	34.00
1/8 x 5	X	2.125	42.50
1/8 x 6	X	2.550	51.00
1/8 x 8	X	3.400	68.00
1/8 x 10	X	4.250	85.00
1/8 x 12	X	5.100	102.00

3/16" FLAT BAR

DIMENSIONS		LBS./FOOT	LBS. LENGTH (20')
3/16 x 1/2	X	0.319	6.38
3/16 x 5/8	X	0.398	7.96
3/16 x 3/4	X	0.478	9.56
3/16 x 1	X	0.638	12.76
3/16 x 1-1/4	X	0.797	15.94
3/16 x 1-1/2	X	0.956	19.12
3/16 x 1-3/4	X	1.116	22.32
3/16 x 2	X	1.275	25.50
3/16 x 2-1/2	X	1.594	31.88
3/16 x 3	X	1.913	38.26
3/16 x 3-1/2	X	2.231	44.62
3/16 x 4	X	2.550	51.00
3/16 x 5	X	3.188	63.76
3/16 x 6	X	3.825	76.56
3/16 x 8	X	5.105	102.10
3/16 x 10	X	6.375	127.50
3/16 x 12	X	7.650	153.00

SPECTRUM STOCKS 20' LENGTHS
PLEASE LET US KNOW IF YOU NEED A DIFFERENT SIZE
PRICES ARE SUBJECT TO AVAILABILITY OR SPECIAL ORDERING

Hot Roll Flat Bar



1/4" FLAT BAR

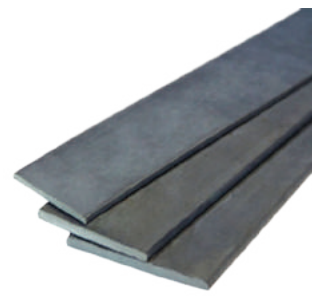
DIMENSIONS		LBS./FOOT	LBS. LENGTH (20')
1/4 x 1/2	X	0.425	8.50
1/4 x 5/8	X	0.531	10.62
1/4 x 3/4	X	0.638	12.76
1/4 x 1	X	0.850	17.00
1/4 x 1-1/4	X	1.063	21.26
1/4 x 1-1/2	X	1.275	25.50
1/4 x 1-3/4	X	1.488	29.76
1/4 x 2	X	1.700	34.00
1/4 x 2-1/2	X	2.125	42.50
1/4 x 3	X	2.550	51.00
1/4 x 3-1/2	X	2.975	59.50
1/4 x 4	X	3.400	68.00
1/4 x 5	X	4.250	85.00
1/4 x 6	X	5.100	102.00
1/4 x 7	X	5.956	119.12
1/4 x 8	X	6.800	136.00
1/4 x 10	X	8.500	170.00
1/4 x 10	X	10.200	204.00

5/16" FLAR BAR

DIMENSIONS		LBS./FOOT	LBS. LENGTH (20')
5/16 x 1	X	1.063	21.26
5/16 x 1-1/4	X	1.328	26.56
5/16 x 1-1/2	X	1.594	31.88
5/16 x 1-3/4	X	1.859	37.18
5/16 x 2	X	2.125	42.50
5/16 x 2-1/2	X	2.656	53.12
5/16 x 3	X	3.188	63.76
5/16 x 3-1/2	X	3.719	74.38
5/16 x 4	X	4.250	85.00
5/16 x 5	X	5.318	106.36
5/16 x 6	X	6.375	127.50

SPECTRUM STOCKS 20' LENGTHS
 PLEASE LET US KNOW IF YOU NEED A DIFFERENT SIZE
 PRICES ARE SUBJECT TO AVAILABILITY OR SPECIAL ORDERING

Hot Roll Flat Bar



3/8" FLAT BAR

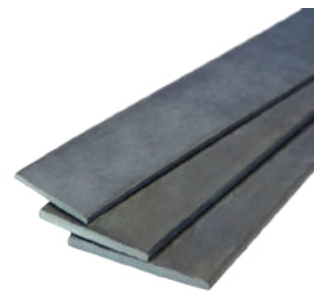
DIMENSIONS		LBS./FOOT	LBS. LENGTH (20')
3/8 x 1/2	X	0.638	12.76
3/8 x 3/4	X	0.956	19.12
3/8 x 1	X	1.275	25.50
3/8 x 1-1/4	X	1.594	31.88
3/8 x 1-1/2	X	1.913	38.26
3/8 x 1-3/4	X	2.231	44.62
3/8 x 2	X	2.550	51.00
3/8 x 2-1/2	X	3.188	63.76
3/8 x 3	X	3.825	76.50
3/8 x 3-1/2	X	4.463	86.76
3/8 x 4	X	5.100	102.00
3/8 x 5	X	6.375	127.50
3/8 x 6	X	7.650	153.00
3/8 x 7	X	8.930	178.60
3/8 x 8	X	10.200	204.00
3/8 x 10	X	12.760	255.20
3/8 x 12	X	15.300	306.00

1/2" FLAT BAR

DIMENSIONS		LBS./FOOT	LBS. LENGTH (20')
1/2 x 3/4	X	1.275	25.50
1/2 x 1	X	1.700	34.00
1/2 x 1-1/4	X	2.125	42.50
1/2 x 1-1/2	X	2.550	51.00
1/2 x 1-3/4	X	2.975	59.50
1/2 x 2	X	3.400	68.00
1/2 x 2-1/2	X	4.250	85.00
1/2 x 3	X	5.100	102.00
1/2 x 3-1/2	X	5.950	119.00
1/2 x 4	X	6.800	136.00
1/2 x 5	X	8.500	170.00
1/2 x 6	X	10.200	204.00
1/2 x 7	X	11.910	238.20
1/2 x 8	X	13.600	272.00
1/2 x 9	X	15.310	306.30
1/2 x 10	X	17.000	340.00
1/2 x 12	X	20.400	408.00

SPECTRUM STOCKS 20' LENGTHS
PLEASE LET US KNOW IF YOU NEED A DIFFERENT SIZE
PRICES ARE SUBJECT TO AVAILABILITY OR SPECIAL ORDERING

Hot Roll Flat Bar



5/8" FLAT BAR

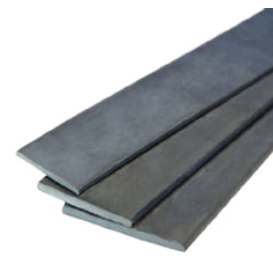
DIMENSIONS		LBS./FOOT	LBS. LENGTH (20')
5/8 x 1	X	2.130	42.60
5/8 x 1-1/2	X	3.188	63.76
5/8 x 2	X	4.250	85.00
5/8 x 2-1/2	X	5.313	106.26
5/8 x 3	X	6.375	127.50
5/8 x 3-1/2	X	7.438	148.76
5/8 x 4	X	8.500	170.00
5/8 x 5	X	10.625	212.50
5/8 x 6	X	12.750	255.00
5/8 x 8	X	17.000	340.00
5/8 x 10	X	21.250	425.00
5/8 x 12	X	25.500	510.00

3/4" FLAT BAR

DIMENSIONS		LBS./FOOT	LBS. LENGTH (20')
3/4 x 1	X	2.550	21.00
3/4 x 1-1/4	X	3.188	63.76
3/4 x 1-1/2	X	3.825	76.50
3/4 x 1-3/4	X	4.463	89.26
3/4 x 2	X	5.100	102.00
3/4 x 2-1/2	X	6.375	127.50
3/4 x 3	X	7.650	153.00
3/4 x 3-1/2	X	8.925	178.50
3/4 x 4	X	10.200	204.00
3/4 x 5	X	12.750	255.00
3/4 x 6	X	15.300	306.00
3/4 x 8	X	20.400	408.00
3/4 x 10	X	25.500	510.00
3/4 x 12	X	30.600	510.00

SPECTRUM STOCKS 20' LENGTHS
PLEASE LET US KNOW IF YOU NEED A DIFFERENT SIZE
PRICES ARE SUBJECT TO AVAILABILITY OR SPECIAL ORDERING

Hot Roll Flat Bar



1" FLAT BAR

DIMENSIONS		LBS./FOOT	LBS. LENGTH (20')
1 x 1-1/2	X	5.100	102.00
1 x 2	X	6.800	136.00
1 x 2-1/2	X	8.500	170.00
1 x 3	X	10.500	204.00
1 x 4	X	13.610	272.30
1 x 5	X	17.000	340.00
1 x 6	X	20.400	408.00
1 x 7	X	23.800	476.00
1 x 8	X	27.200	544.00
1 x 10	X	34.030	680.60
1 x 12	X	40.840	816.80

1-1/4" FLAT BAR

DIMENSIONS		LBS./FOOT	LBS. LENGTH (20')
1-1/4 x 2	X	8.500	170.00
1-1/4 x 2-1/2	X	10.625	212.50
1-1/4 x 3	X	12.750	255.00
1-1/4 x 3-1/2	X	14.875	297.50
1-1/4 x 4	X	17.000	340.00

1-1/2" FLAT BAR

DIMENSIONS		LBS./FOOT	LBS. LENGTH (20')
1-1/2 x 2	X	10.200	204.00
1-1/2 x 2-1/2	X	12.750	255.00
1-1/2 x 3	X	15.300	306.00
1-1/2 x 4	X	20.400	408.00
1-1/2 x 6	X	30.630	612.60

2" FLAT BAR

DIMENSIONS		LBS./FOOT	LBS. LENGTH (20')
2 x 3	X	20.400	408.00
2 x 4	X	27.200	544.00
2 x 5	X	34.000	680.00
2 x 6	X	40.800	816.00
2 x 7	X	47.600	952.00
2 x 8	X	54.400	1088.00

SPECTRUM STOCKS 20' LENGTHS
 PLEASE LET US KNOW IF YOU NEED A DIFFERENT SIZE
 PRICES ARE SUBJECT TO AVAILABILITY OR SPECIAL ORDERING

Hot Roll Square Bar



ASTM A36 SQUARE BAR

DIMENSIONS		LBS./FOOT	LBS. LENGTH
1/4" SQUARE	X	0.213	4.26
5/16" SQUARE	X	0.332	6.64
3/8" SQUARE	X	0.478	9.56
7/16" SQUARE	X	0.651	13.02
1/2" SQUARE	X	0.850	17.00
5/8" SQUARE	X	1.328	26.56
3/4" SQUARE	X	1.913	38.26
7/8" SQUARE	X	2.603	52.06
1" SQUARE	X	3.400	68.00
1-1/4" SQUARE	X	5.313	106.26
1-1/2" SQUARE	X	7.650	153.00
1-3/4" SQUARE	X	10.42	208.40
2" SQUARE	X	13.60	272.30

Hot Roll Round Bar

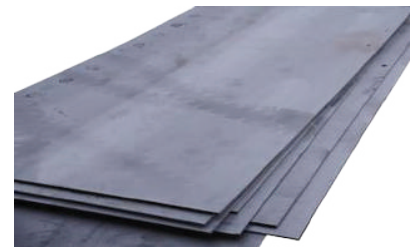


ASTM A36 ROUND BAR

DIMENSIONS		LBS./FOOT	LBS. LENGTH
1/4" ROUND	X	0.167	3.34
5/16" ROUND	X	0.261	5.22
3/8" ROUND	X	0.376	7.52
7/16" ROUND	X	0.511	10.22
1/2" ROUND	X	0.668	13.36
9/16" ROUND	X	0.845	16.90
5/8" ROUND	X	1.043	20.86
3/4" ROUND	X	1.502	30.04
7/8" ROUND	X	2.040	40.80
1" ROUND	X	2.670	53.40
1-1/8" ROUND	X	3.380	67.60
1-1/4" ROUND	X	4.170	83.40
1-3/8" ROUND	X	5.050	101.00
1-1/2" ROUND	X	6.010	120.20
1-3/4" ROUND	X	8.180	163.60
2" SQUARE	X	10.680	213.60

SPECTRUM STOCKS 20' LENGTHS
 PLEASE LET US KNOW IF YOU NEED A DIFFERENT SIZE
 PRICES ARE SUBJECT TO AVAILABILITY OR SPECIAL ORDERING

Hot Roll Sheet



10 GAUGE SHEET

LENGTH		WIDTH	LBS./SQ.FOOT	TOTAL WEIGHT
48"	X	96"	5.625	180.00
48"	X	120"	5.625	225.00
48"	X	144"	5.625	270.00
60"	X	120"	5.625	281.25

11 GAUGE SHEET

LENGTH		WIDTH	LBS./SQ.FOOT	TOTAL WEIGHT
48"	X	96"	5.00	160.00
48"	X	120"	5.00	200.00
48"	X	144"	5.00	240.00
60"	X	120"	5.00	250.00

12 GAUGE SHEET

LENGTH		WIDTH	LBS./SQ.FOOT	TOTAL WEIGHT
48"	X	96"	4.375	140.00
48"	X	120"	4.375	175.00
48"	X	144"	4.375	210.00
60"	X	120"	4.375	218.75

14 GAUGE SHEET

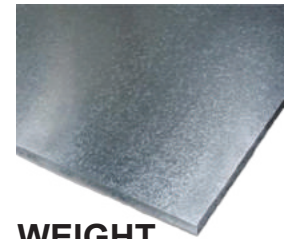
LENGTH		WIDTH	LBS./SQ.FOOT	TOTAL WEIGHT
48"	X	96"	3.125	100.00
48"	X	120"	3.125	125.00
48"	X	144"	3.125	125.00
60"	X	120"	3.125	156.25

16 GAUGE SHEET

LENGTH		WIDTH	LBS./SQ.FOOT	TOTAL WEIGHT
48"	X	96"	2.500	80.00
48"	X	120"	2.500	100.00
48"	X	144"	2.500	120.00
60"	X	120"	2.500	125.00

PRICES ARE SUBJECT TO AVAILABILITY OR SPECIAL ORDERING

Galvanized Sheet



10 GAUGE SHEET

LENGTH		WIDTH	LBS./SQ.FOOT	TOTAL WEIGHT
48"	x	120"	5.78125	231.25

11 GAUGE SHEET

LENGTH		WIDTH	LBS./SQ.FOOT	TOTAL WEIGHT
48"	x	120"	5.15625	206.25

12 GAUGE SHEET

LENGTH		WIDTH	LBS./SQ.FOOT	TOTAL WEIGHT
48"	x	120"	4.53125	181.25

14 GAUGE SHEET

LENGTH		WIDTH	LBS./SQ.FOOT	TOTAL WEIGHT
48"	x	120"	3.28125	131.25

16 GAUGE SHEET

LENGTH		WIDTH	LBS./SQ.FOOT	TOTAL WEIGHT
48"	x	120"	2.65625	106.25

18 GAUGE SHEET

LENGTH		WIDTH	LBS./SQ.FOOT	TOTAL WEIGHT
48"	x	120"	2.15625	86.25

20 GAUGE SHEET

LENGTH		WIDTH	LBS./SQ.FOOT	TOTAL WEIGHT
48"	x	120"	1.65625	66.25

22 GAUGE SHEET

LENGTH		WIDTH	LBS./SQ.FOOT	TOTAL WEIGHT
48"	x	120"	1.40625	56.25

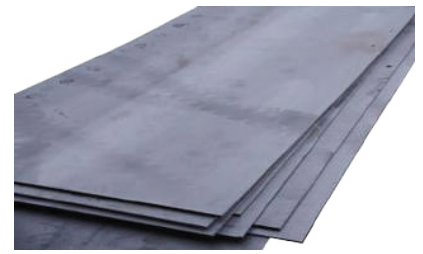
24 GAUGE SHEET

LENGTH		WIDTH	LBS./SQ.FOOT	TOTAL WEIGHT
48"	x	120"	1.15625	46.25

26 GAUGE SHEET

LENGTH		WIDTH	LBS./SQ.FOOT	TOTAL WEIGHT
48"	x	120"	0.90625	36.25

Cold Roll Sheet



11 GAUGE SHEET

LENGTH		WIDTH	LBS./SQ.FOOT	TOTAL WEIGHT
48"	x	120"	5.00	200.00

12 GAUGE SHEET

LENGTH		WIDTH	LBS./SQ.FOOT	TOTAL WEIGHT
48"	x	120"	4.375	175.00

14 GAUGE SHEET

LENGTH		WIDTH	LBS./SQ.FOOT	TOTAL WEIGHT
48"	x	120"	3.125	125.00

16 GAUGE SHEET

LENGTH		WIDTH	LBS./SQ.FOOT	TOTAL WEIGHT
48"	x	120"	2.500	100.00

18 GAUGE SHEET

LENGTH		WIDTH	LBS./SQ.FOOT	TOTAL WEIGHT
48"	x	120"	2.00	80.00

20 GAUGE SHEET

LENGTH		WIDTH	LBS./SQ.FOOT	TOTAL WEIGHT
48"	x	120"	1.500	60.00

22 GAUGE SHEET

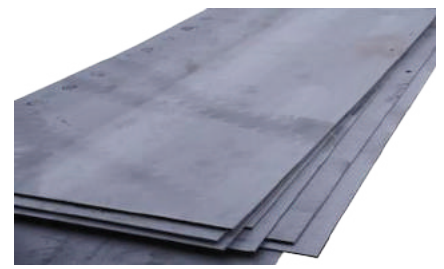
LENGTH		WIDTH	LBS./SQ.FOOT	TOTAL WEIGHT
48"	x	120"	1.250	50.00

24 GAUGE SHEET

LENGTH		WIDTH	LBS./SQ.FOOT	TOTAL WEIGHT
48"	x	120"	1.00	40.00

PRICES ARE SUBJECT TO AVAILABILITY OR SPECIAL ORDERING

Hot Roll Plate



3/16" PLATE • A36

LENGTH		WIDTH	LBS./SQ.FOOT	TOTAL WEIGHT
48"	X	96"	7.66	245.10
48"	X	120"	7.66	306.40
48"	X	144"	7.66	367.70
60"	X	120"	7.66	383.00

1/4" PLATE • A36

LENGTH		WIDTH	LBS./SQ.FOOT	TOTAL WEIGHT
48"	X	96"	10.21	326.70
48"	X	120"	10.21	408.40
48"	X	144"	10.21	490.10
60"	X	120"	10.21	510.50

5/16" PLATE • A36

LENGTH		WIDTH	LBS./SQ.FOOT	TOTAL WEIGHT
48"	X	96"	12.76	408.30
48"	X	120"	12.76	510.40

3/8" PLATE • A36

LENGTH		WIDTH	LBS./SQ.FOOT	TOTAL WEIGHT
48"	X	96"	15.31	489.90
48"	X	120"	15.31	612.40
60"	X	120"	15.31	765.50

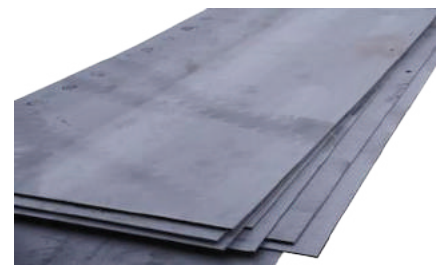
7/16" PLATE • A36

LENGTH		WIDTH	LBS./SQ.FOOT	TOTAL WEIGHT
48"	X	96"	17.87	571.80

1/2" PLATE • A36

LENGTH		WIDTH	LBS./SQ.FOOT	TOTAL WEIGHT
48"	X	96"	20.42	653.40
48"	X	120"	20.42	816.80
60"	X	120"	20.42	1021.00

Hot Roll Plate



5/8" PLATE • A36

LENGTH		WIDTH	LBS./SQ.FOOT	TOTAL WEIGHT
48"	X	96"	25.52	516.60
48"	X	120"	25.52	1020.80

3/4" PLATE • A36

LENGTH		WIDTH	LBS./SQ.FOOT	TOTAL WEIGHT
48"	X	96"	30.63	980.20
48"	X	120"	30.63	1225.20

1" PLATE • A36

LENGTH		WIDTH	LBS./SQ.FOOT	TOTAL WEIGHT
48"	X	96"	40.84	1306.90
48"	X	120"	40.84	1633.60

1-1/4" PLATE • A36

LENGTH		WIDTH	LBS./SQ.FOOT	TOTAL WEIGHT
48"	X	96"	51.05	1634.00

1-1/2" PLATE • A36

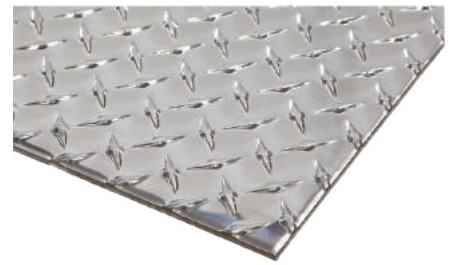
LENGTH		WIDTH	LBS./SQ.FOOT	TOTAL WEIGHT
48"	X	96"	61.26	1960.00

2" PLATE • A36

LENGTH		WIDTH	LBS./SQ.FOOT	TOTAL WEIGHT
48"	X	96"	81.68	2614.00

PRICES ARE SUBJECT TO AVAILABILITY OR SPECIAL ORDERING

Diamond Plate



14 GAUGE

LENGTH		WIDTH	LBS./SQ.FOOT	TOTAL WEIGHT
48"	X	96"	3.75	120.00
48"	X	120"	3.75	150.00

12 GAUGE

LENGTH		WIDTH	LBS./SQ.FOOT	TOTAL WEIGHT
48"	X	96"	5.25	168.00
48"	X	120"	5.25	210.00

1/8" THICK

LENGTH		WIDTH	LBS./SQ.FOOT	TOTAL WEIGHT
48"	X	96"	6.15	196.80
48"	X	120"	6.15	246.00
60"	X	96"	6.15	246.00
60"	X	120"	6.15	307.50

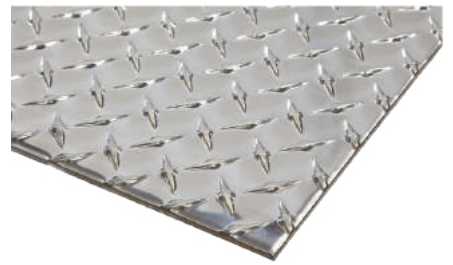
3/16" THICK

LENGTH		WIDTH	LBS./SQ.FOOT	TOTAL WEIGHT
48"	X	96"	8.71	278.70
48"	X	120"	8.71	348.40
60"	X	120"	8.71	435.50
72"	X	120"	8.71	522.60

1/4" THICK

LENGTH		WIDTH	LBS./SQ.FOOT	TOTAL WEIGHT
48"	X	96"	11.26	360.30
48"	X	120"	11.26	450.40
48"	X	144"	11.26	540.48
60"	X	120"	11.26	563.00

Diamond Plate



5/16" THICK

LENGTH		WIDTH	LBS./SQ.FOOT	TOTAL WEIGHT
48"	X	96"	13.81	441.92
48"	X	120"	13.81	552.40
48"	X	144"	13.81	662.88
60"	X	120"	13.81	690.50
60"	X	144"	13.81	828.60

3/8" THICK

LENGTH		WIDTH	LBS./SQ.FOOT	TOTAL WEIGHT
48"	X	96"	16.37	523.80
48"	X	120"	16.37	654.80
60"	X	120"	16.37	818.50

1/2" THICK

LENGTH		WIDTH	LBS./SQ.FOOT	TOTAL WEIGHT
48"	X	96"	21.47	687.00
60"	X	120"	21.47	1288.20

Services We Offer

- Welding — MIG, Stick, TIG, Stainless Steel, Stud
- Saw, CNC Plasma & CNC Flame Cutting
- Bending & Forming
- Drilling & Multi-Punching
- Threading & Tapering
- Plate Shearing & Rolling
- Painting, Plating, & Rolling
- Reworking Your Damaged Parts

PRICES ARE SUBJECT TO AVAILABILITY OR SPECIAL ORDERING

Aluminum Shapes

ALUMINUM PIPE

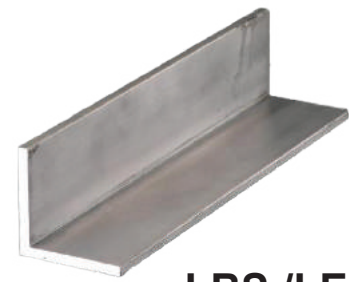
DIMENSIONS		LBS./FOOT	LBS./LENGTH
1/2" PIPE SCHEDULE 40	x	0.300	6.00
3/4" PIPE SCHEDULE 40	x	0.391	7.82
1" PIPE SCHEDULE 40	x	0.581	11.62
1-1/4" PIPE SCHEDULE 40	x	0.786	15.72
1-1/2" PIPE SCHEDULE 40	x	0.959	19.18
2" PIPE SCHEDULE 40	x	1.289	25.78

ALUMINUM CHANNEL

DIMENSIONS		LBS./FOOT	LBS./LENGTH (16')	
1/2 x 1	x	1/8	0.262	4.192
1 x 1	x	1/8	0.413	6.608
1-1/2 x 1-1/2	x	1/8	0.638	10.208
1 x 2	x	1/8	0.577	9.232
3 x 1.41	x	0.170	1.45	23.200
3 x 1.75	x	0.170	1.63	26.080
4 x 1.58	x	0.180	1.88	30.080
5 x 1.75	x	0.190	2.38	38.080
6 x 1.92	x	0.200	2.89	46.240

PLEASE LET US KNOW IF YOU NEED A DIFFERENT SIZE
PRICES ARE SUBJECT TO AVAILABILITY OR SPECIAL ORDERING

Aluminum Angle



6061 ALUMINUM ANGLE • EQUAL LEGS

DIMENSIONS			LBS./FOOT	LBS./LENGTH (25')
1/2 x 1/2	X	1/16	0.070	1.75
1/2 x 1/2	X	1/8	0.127	3.175
3/4 x 3/4	X	1/16	0.108	2.70
3/4 x 3/4	X	1/8	0.206	5.15
1 x 1	X	1/16	0.141	3.525
1 x 1	X	1/8	0.282	7.05
1 x 1	X	3/16	0.408	10.20
1 x 1	X	1/4	0.524	13.10
1-1/4 x 1-1/4	X	1/8	0.350	8.75
1-1/4 x 1-1/4	X	3/16	0.515	12.875
1-1/4 x 1-1/4	X	1/4	0.668	16.70
1-1/2 x 1-1/2	X	1/8	0.431	10.775
1-1/2 x 1-1/2	X	3/16	0.636	15.90
1-1/2 x 1-1/2	X	1/4	0.826	20.65
1-3/4 x 1-3/4	X	1/4	0.960	24.00
2 x 2	X	1/8	0.581	14.525
2 x 2	X	3/16	0.868	21.70
2 x 2	X	1/4	1.133	28.325
2 x 2	X	3/8	1.639	40.975
2-1/2 x 2-1/2	X	1/8	0.750	18.75
2-1/2 x 2-1/2	X	3/16	1.092	27.30
2-1/2 x 2-1/2	X	1/4	1.433	35.825
2-1/2 x 2-1/2	X	3/8	2.089	52.225

PLEASE LET US KNOW IF YOU NEED A DIFFERENT SIZE
PRICES ARE SUBJECT TO AVAILABILITY OR SPECIAL ORDERING

Aluminum Angle



6061 ALUMINUM ANGLE • EQUAL LEGS

DIMENSIONS			LBS./FOOT	LBS./LENGTH (25')
3 x 3	X	3/16	1.28	31.88
3 x 3	X	1/4	1.717	42.925
3 x 3	X	5/16	2.08	52.05
3 x 3	X	3/8	2.252	63.125
4 x 4	X	1/4	2.329	58.225
4 x 4	X	3/8	3.434	85.85
6 x 6	X	3/8	5.220	130.50

6061 ALUMINUM ANGLE • UNEQUAL LEGS

DIMENSIONS			LBS./FOOT	LBS./LENGTH (25')
1 x 2	X	1/8	0.418	10.45
1-1/2 x 2	X	1/8	0.510	12.75
1-1/2 x 2	X	3/16	0.744	18.60
1-1/2 x 2	X	1/4	0.976	24.40
2 x 3	X	3/16	1.08	27.00
2 x 3	X	1/4	1.43	35.75
2 x 3	X	3/8	2.07	21.75
3 x 4	X	1/4	2.03	50.75

PLEASE LET US KNOW IF YOU NEED A DIFFERENT SIZE
PRICES ARE SUBJECT TO AVAILABILITY OR SPECIAL ORDERING

Aluminum Flat Bar



6061 • T6 ALUMINUM FLAT BAR

**LBS./LENGTH
(12')**

DIMENSIONS		LBS./FOOT	
1/8 x 1/2	X	0.0750	0.900
1/8 x 3/4	X	0.113	1.344
1/8 x 1	X	0.150	1.800
1/8 x 1-1/4	X	0.187	2.240
1/8 x 1-1/2	X	0.226	2.712
1/8 x 2	X	0.300	3.600
1/8 x 2-1/2	X	0.376	4.512
1/8 x 3	X	0.450	5.400
1/8 x 4	X	0.600	7.200
3/16 x 1/2	X	0.113	1.36
3/16 x 3/4	X	0.169	2.03
3/16 x 1	X	0.226	2.71
3/16 x 1-1/4	X	0.282	3.38
3/16 x 1-1/2	X	0.338	4.056
3/16 x 2	X	0.451	5.41
3/16 x 2-1/2	X	0.560	6.72
3/16 x 3	X	0.667	8.12
3/16 x 4	X	0.902	10.824
1/4 x 1/2	X	0.150	1.80
1/4 x 3/4	X	0.224	2.688
1/4 x 1	X	0.300	3.60
1/4 x 1-1/4	X	0.374	4.50
1/4 x 1-1/2	X	0.450	5.40
1/4 x 1-3/4	X	0.526	6.31
1/4 x 2	X	0.600	7.20
1/4 x 2-1/2	X	0.750	9.00
1/4 x 3	X	0.900	10.80
1/4 x 4	X	1.20	14.40
1/4 x 5	X	1.496	17.952
1/4 x 6	X	1.80	21.60
1/4 x 12	X	3.60	43.00
5/16 x 1	X	0.374	4.49
5/16 x 2	X	0.749	8.99
5/16 x 3	X	1.101	13.212

PLEASE LET US KNOW IF YOU NEED A DIFFERENT SIZE
PRICES ARE SUBJECT TO AVAILABILITY OR SPECIAL ORDERING

Aluminum Flat Bar



6061 • T6 ALUMINUM FLAT BAR

**LBS./LENGTH
(12')**

DIMENSIONS		LBS./FOOT	LBS./LENGTH (12')
3/8 x 1/2	X	0.225	2.70
3/8 x 3/4	X	0.337	4.04
3/8 x 1	X	0.450	5.40
3/8 x 1-1/4	X	0.561	6.77
3/8 x 1-1/2	X	0.676	8.112
3/8 x 2	X	0.900	10.80
3/8 x 2-1/2	X	1.126	13.51
3/8 x 3	X	1.350	16.20
3/8 x 4	X	1.800	21.60
3/8 x 6	X	2.700	32.40
1/2 x 5/8	X	0.374	4.488
1/2 x 3/4	X	0.450	5.400
1/2 x 1	X	0.600	7.200
1/2 x 1-1/4	X	0.750	9.000
1/2 x 1-1/2	X	0.900	10.800
1/2 x 1-3/4	X	1.05	12.600
1/2 x 2	X	1.20	14.400
1/2 x 2-1/2	X	1.50	18.00
1/2 x 3	X	1.80	21.600
1/2 x 3-1/2	X	2.10	25.200
1/2 x 4	X	2.40	28.800
1/2 x 5	X	3.00	35.976
1/2 x 6	X	3.60	43.200
1/2 x 8	X	4.80	57.600
5/8 x 3/4	X	0.583	6.996
5/8 x 1	X	0.750	9.000
5/8 x 1-1/2	X	1.124	13.490
5/8 x 2	X	1.50	18.000
5/8 x 2-1/2	X	1.875	22.500
5/8 x 3	X	2.25	27.000
5/8 x 4	X	3.00	36.000

PLEASE LET US KNOW IF YOU NEED A DIFFERENT SIZE
PRICES ARE SUBJECT TO AVAILABILITY OR SPECIAL ORDERING

Aluminum Flat Bar



6061 • T6 ALUMINUM FLAT BAR

LBS./LENGTH
(12')

DIMENSIONS		LBS./FOOT	LBS./LENGTH (12')
3/4 x 1	X	0.900	10.800
3/4 x 1-1/2	X	1.35	16.200
3/4 x 2	X	1.80	21.600
3/4 x 2-1/2	X	2.25	27.000
3/4 x 3	X	2.70	32.400
3/4 x 4	X	3.60	43.200
3/4 x 6	X	5.40	64.800
3/4 x 8	X	7.20	86.400
1 x 1-1/2	X	1.80	21.600
1 x 2	X	2.40	28.800
1 x 3	X	3.60	43.200
1 x 4	X	4.80	57.600
1 x 5	X	6.00	72.000
1 x 6	X	7.20	86.400
1 x 8	X	9.408	115.20

PLEASE LET US KNOW IF YOU NEED A DIFFERENT SIZE
PRICES ARE SUBJECT TO AVAILABILITY OR SPECIAL ORDERING

Aluminum Square Bar



6061 • T6 ALUMINUM SQUARE BAR

**LBS./LENGTH
(12')**

DIMENSIONS		LBS./FOOT	LBS./LENGTH (12')
1/4" SQUARE	X	0.074	0.890
3/8" SQUARE	X	0.169	2.028
1/2" SQUARE	X	0.300	3.600
5/8" SQUARE	X	0.473	5.620
3/4" SQUARE	X	0.676	8.112
7/8" SQUARE	X	0.928	11.016
1" SQUARE	X	1.200	14.400
1-1/4" SQUARE	X	1.874	22.488
1-1/2" SQUARE	X	2.700	32.400
1-3/4" SQUARE	X	3.676	44.112
2" SQUARE	X	4.798	57.600

Aluminum Round Bar



6061 • T6 ALUMINUM ROUND BAR

**LBS./LENGTH
(12')**

DIMENSIONS		LBS./FOOT	LBS./LENGTH (12')
1/8" ROUND	X	0.014	0.168
3/16" ROUND	X	0.032	0.384
1/4" ROUND	X	0.058	0.696
5/16" ROUND	X	0.093	1.116
3/8" ROUND	X	0.132	1.550
1/2" ROUND	X	0.235	2.760
5/8" ROUND	X	0.368	4.416
3/4" ROUND	X	0.530	6.200
7/8" ROUND	X	0.722	8.664
1" ROUND	X	0.942	11.060
1-1/8" ROUND	X	1.193	14.040
1-3/16" ROUND	X	1.330	15.960
1-1/4" ROUND	X	1.473	17.400
1-3/8" ROUND	X	1.782	21.000
1-1/2" ROUND	X	2.121	24.840
1-5/8" ROUND	X	2.489	29.868
1-3/4" ROUND	X	2.886	33.720
1-7/8" ROUND	X	3.313	39.756
2" ROUND	X	3.770	44.280
2-1/2" ROUND	X	5.891	68.900

PLEASE LET US KNOW IF YOU NEED A DIFFERENT SIZE
PRICES ARE SUBJECT TO AVAILABILITY OR SPECIAL ORDERING

Cold Roll Flat Bar



1018 COLD ROLL FLAT BAR

**LBS./LENGTH
(12')**

DIMENSIONS

LBS./FOOT

1/8" x 1/2"	X	0.213	2.56
1/8" x 3/4"	X	0.319	3.83
1/8" x 1"	X	0.425	5.10
1/8" x 1-1/4"	X	0.531	6.37
1/8" x 1-3/8"	X	0.584	7.01
1/8" x 1-1/2"	X	0.638	7.66
1/8" x 1-3/4"	X	0.745	8.94
1/8" x 2"	X	0.850	10.20
1/8" x 2-1/2"	X	1.063	12.76
1/8" x 3"	X	1.275	15.30
1/8" 3-1/2"	X	1.488	17.86
1/8" x 4"	X	1.700	20.40
1/8" x 6"	X	2.550	30.60

3/16" x 1/2"	X	0.319	3.83
3/16" x 5/8"	X	0.398	4.78
3/16" x 3/4"	X	0.479	5.75
3/16" x 1"	X	0.638	7.66
3/16" x 1-1/4"	X	0.798	9.58
3/16" x 1-1/2"	X	0.956	11.47
3/16" x 1-3/4"	X	1.117	13.404
3/16" x 2"	X	1.275	15.30
3/16" x 2-1/2"	X	1.595	19.14
3/16" x 3"	X	1.913	22.96
3/16" x 4"	X	2.550	30.60

1/4" x 3/8"	X	0.319	3.83
1/4" x 1/2"	X	0.425	5.10
1/4" x 5/8"	X	0.532	6.38
1/4" x 3/4"	X	0.638	7.66
1/4" x 1"	X	0.850	10.20
1/4" x 1-1/4"	X	1.063	12.76
1/4" x 1-1/2"	X	1.275	15.30
1/4" x 1-3/4"	X	1.489	17.87
1/4" x 2"	X	1.700	20.40
1/4" x 2-1/2"	X	2.127	25.52
1/4" x 3"	X	2.550	30.60
1/4" x 4"	X	3.403	40.84

PLEASE LET US KNOW IF YOU NEED A DIFFERENT SIZE
PRICES ARE SUBJECT TO AVAILABILITY OR SPECIAL ORDERING

Cold Roll Flat Bar



1018 COLD ROLL FLAT BAR

LBS./LENGTH
(12')

DIMENSIONS		LBS./FOOT	LBS./LENGTH (12')
5/16" x 1"	X	1.064	12.77
5/16" x 1-1/4"	X	1.329	15.95
5/16" x 1-1/2"	X	1.595	19.14
5/16" x 2"	X	2.127	25.52
5/16" x 4"	X	4.254	51.05
3/8" x 1/2"	X	0.638	7.66
3/8" x 3/4"	X	0.957	11.48
3/8" x 1"	X	1.276	15.31
3/8" x 1-1/4"	X	1.595	19.14
3/8" x 1-1/2"	X	1.914	22.97
3/8" x 1-3/4"	X	2.231	26.77
3/8" x 2"	X	2.552	30.62
3/8" x 2-1/4"	X	2.871	34.45
3/8" x 2-1/2"	X	3.191	38.29
3/8" x 3"	X	3.829	45.95
3/8" x 4"	X	5.105	61.26
1/2" x 5/8"	X	1.064	12.77
1/2" x 3/4"	X	1.276	15.31
1/2" x 1"	X	1.702	20.42
1/2" x 1-1/4"	X	2.127	25.52
1/2" x 1-1/2"	X	2.552	30.62
1/2" x 1-3/4"	X	2.978	35.74
1/2" x 2"	X	3.403	40.84
1/2" x 2-1/2"	X	4.250	51.00
1/2" x 3"	X	5.105	61.26
1/2" x 4"	X	6.806	81.67
5/8" x 1"	X	2.127	25.52
5/8" x 1-1/2"	X	3.191	38.29
5/8" x 2"	X	4.254	51.05
3/4" x 1"	X	2.550	30.60
3/4" x 1-1/2"	X	3.829	45.95
3/4" x 2"	X	5.105	61.26
1" x 1-1/4"	X	4.254	51.05
1" x 1-1/2"	X	5.105	61.26
1" x 1-3/4"	X	5.956	71.47
1" x 2"	X	6.803	81.67
1" x 2-1/2"	X	8.503	102.10
1" x 3"	X	10.21	122.52
1" x 4"	X	13.61	163.32

Cold Roll Square Bar



1018 COLD ROLL SQUARE BAR

DIMENSIONS		LBS./FOOT	LBS./LENGTH (12')
1/8" SQUARE	X	0.0531	0.6372
3/16" SQUARE	X	0.120	1.440
1/4" SQUARE	X	0.213	2.556
5/16" SQUARE	X	0.332	3.984
3/8" SQUARE	X	0.479	5.748
7/16" SQUARE	X	0.651	7.812
1/2" SQUARE	X	0.851	10.212
9/16" SQUARE	X	1.077	12.924
5/8" SQUARE	X	1.329	15.945
11/16" SQUARE	X	1.609	19.308
3/4" SQUARE	X	1.914	22.970
13/16" SQUARE	X	2.247	26.964
7/8" SQUARE	X	2.606	31.272
15/16" SQUARE	X	2.991	35.892
1" SQUARE	X	3.403	40.836
1-1/16" SQUARE	X	3.842	46.104
1-1/8" SQUARE	X	4.307	51.684
1-3/16" SQUARE	X	4.799	57.588
1-1/4" SQUARE	X	5.318	63.816
1-3/8" SQUARE	X	6.434	77.208
1-1/2" SQUARE	X	7.657	91.884
1-5/8" SQUARE	X	8.987	107.84
1-3/4" SQUARE	X	10.42	125.04
1-7/8" SQUARE	X	11.96	143.52
2" SQUARE	X	13.61	163.32
2-1/2" SQUARE	X	21.27	255.24
3" SQUARE	X	30.63	367.56
4" SQUARE	X	54.45	652.40

PLEASE LET US KNOW IF YOU NEED A DIFFERENT SIZE
 PRICES ARE SUBJECT TO AVAILABILITY OR SPECIAL ORDERING

Cold Roll Round Bar

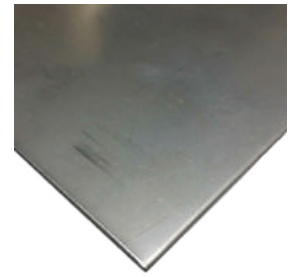


1018 COLD ROLL ROUND BAR

DIMENSIONS		LBS./FOOT	LBS./LENGTH
1/8" ROUND	X	0.042	0.504 (12')
3/16" ROUND	X	0.0940	1.128 (12')
1/4" ROUND	X	0.1670	2.004 OR 3.340 (20')
5/16" ROUND	X	0.2610	5.220
3/8" ROUND	X	0.3759	7.518
7/16" ROUND	X	0.5110	10.22
1/2" ROUND	X	0.668	13.36
9/16" ROUND	X	0.845	16.90
5/8" ROUND	X	1.044	20.88
11/16" ROUND	X	1.263	25.26
3/4" ROUND	X	1.502	30.04
13/16" ROUND	X	1.765	35.30
7/8" ROUND	X	2.044	40.88
15/16" ROUND	X	2.349	46.98
1" ROUND	X	2.67	53.40
1-1/16" ROUND	X	3.017	60.34
1-1/8" ROUND	X	3.379	67.58
1-3/16" ROUND	X	3.769	75.38
1-1/4" ROUND	X	4.176	83.52
1-5/16" ROUND	X	4.60	92.00
1-3/8" ROUND	X	5.049	100.98
1-7/16" ROUND	X	5.518	110.36
1-1/2" ROUND	X	6.014	120.28
1-5/8" ROUND	X	7.058	141.16
1-3/4" ROUND	X	8.186	163.72
1-15/16" ROUND	X	10.03	200.6
2" SQUARE	X	10.69	213.8

PLEASE LET US KNOW IF YOU NEED A DIFFERENT SIZE
 PRICES ARE SUBJECT TO AVAILABILITY OR SPECIAL ORDERING

304 • 2B Stainless Steel Sheet



TYPE 304 • FINISH #2B

THICKNESS		SIZE OF PLATE	LBS./SQ.FOOT	LBS./SHEET
7 GAUGE	X	48" x 120"	7.870	314.800
10 GAUGE	X	48" x 120"	5.670	226.800
11 GAUGE	X	48" x 120"	5.250	201.600
12 GAUGE	X	48" x 120"	4.410	176.400
13 GAUGE	X	48" x 120"	3.780	151.200
14 GAUGE	X	48" x 120"	3.150	126.000
16 GAUGE	X	48" x 120"	2.520	100.800
18 GAUGE	X	48" x 120"	2.016	80.600
20 GAUGE	X	48" x 120"	1.512	59.000
22 GAUGE	X	48" x 120"	1.260	50.400
24 GAUGE	X	48" x 120"	1.008	40.300

PLEASE LET US KNOW IF YOU NEED A DIFFERENT SIZE
PRICES ARE SUBJECT TO AVAILABILITY OR SPECIAL ORDERING

Stainless Steel Flat Bar



TYPE 304 • FINISH # 2B FLAT BAR

DIMENSIONS		WALL THICKNESS	LBS./FOOT
------------	--	----------------	-----------

1/8" x 1/2"	X	0.212	RANDOM
1/8" x 3/4"	X	0.319	RANDOM
1/8" x 1"	X	0.425	RANDOM
1/8" x 1-1/4"	X	0.532	RANDOM
1/8" x 1-1/2"	X	0.638	RANDOM
1/8" x 2"	X	0.851	RANDOM
1/8" x 2-1/2"	X	1.064	RANDOM
1/8" x 3"	X	1.276	RANDOM
1/8" x 4"	X	1.700	RANDOM
1/8" x 5"	X	2.170	RANDOM
1/8" x 6"	X	2.610	RANDOM
3/16" x 1/2"	X	0.319	RANDOM
3/16" x 3/4"	X	0.479	RANDOM
3/16" x 1"	X	0.638	RANDOM
3/16" x 1-1/4"	X	0.798	RANDOM
3/16" x 1-1/2"	X	0.957	RANDOM
3/16" x 2"	X	1.276	RANDOM
3/16" x 2-1/2"	X	1.595	RANDOM
3/16" x 3"	X	1.914	RANDOM
3/16" x 4"	X	2.552	RANDOM
3/16" x 6"	X	3.829	RANDOM
1/4" x 1/2"	X	0.425	RANDOM
1/4" x 3/4"	X	0.638	RANDOM
1/4" x 1"	X	0.851	RANDOM
1/4" x 1-1/4"	X	1.064	RANDOM
1/4" x 1-1/2"	X	1.276	RANDOM
1/4" x 2"	X	1.702	RANDOM
1/4" x 2-1/2"	X	2.127	RANDOM
1/4" x 3"	X	2.552	RANDOM
1/4" x 4"	X	3.403	RANDOM

SPECTRUM STOCKS 20' LENGTHS
 PLEASE LET US KNOW IF YOU NEED A DIFFERENT SIZE
 PRICES ARE SUBJECT TO AVAILABILITY OR SPECIAL ORDERING

Stainless Steel Flat Bar



TYPE 304 • FINISH # 2B FLAT BAR

DIMENSIONS		WALL THICKNESS	LBS./FOOT
3/8" x 1/2"	X	0.638	RANDOM
3/8" x 3/4"	X	0.957	RANDOM
3/8" x 1"	X	1.276	RANDOM
3/8" x 1-1/2"	X	1.914	RANDOM
3/8" x 2"	X	2.552	RANDOM
3/8" x 3"	X	3.829	RANDOM
3/8" x 4"	X	5.105	RANDOM
3/8" x 6"	X	7.657	RANDOM
1/2" x 3/4"	X	1.276	RANDOM
1/2" x 1"	X	1.702	RANDOM
1/2" x 1-1/4"	X	2.127	RANDOM
1/2" x 1-1/2"	X	2.552	RANDOM
1/2" x 2"	X	3.403	RANDOM
1/2" x 4"	X	6.806	RANDOM
1/2" x 6"	X	10.21	RANDOM

Services We Offer

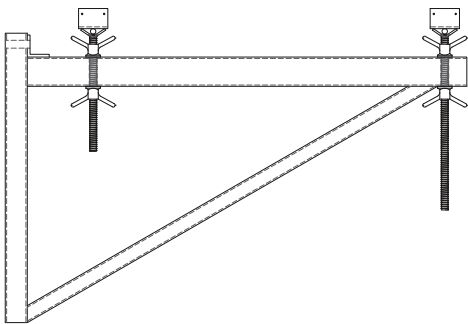
- Welding — MIG, Stick, TIG, Stainless Steel, Stud
- Saw, CNC Plasma & CNC Flame Cutting
- Bending & Forming
- Drilling & Multi-Punching
- Threading & Tapering
- Plate Shearing & Rolling
- Painting, Plating, & Rolling
- Reworking Your Damaged Parts



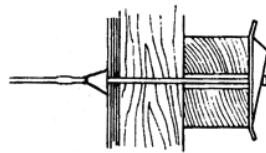
Manufacturing • Distribution • Rentals

The Best Choice For Concrete Accessories & Steel Fabrication

Spectrum manufactures and distributes various lines of concrete accessories and construction supplies including light & heavy-duty forming accessories, bridge & falsework products, waterstop, safety products, fall protection, chemicals, flatwork accessories, and power equipment.



Bridge Overhang Brackets



Snapties



Taper Ties



Footing Ties



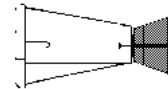
Loop Ties



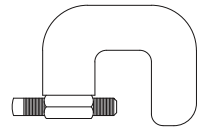
Coil Rod



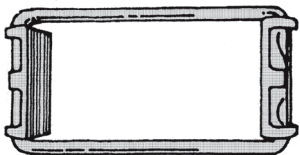
Screed Posts



Precast Inserts



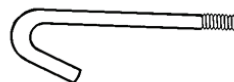
C-Clamps



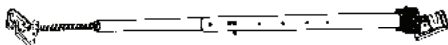
Shore Clamps



Beam Clips



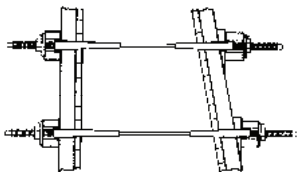
J-Bolts



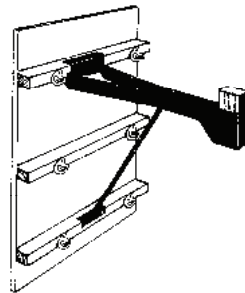
Tilt-up Braces



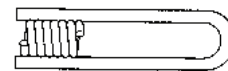
Stayform



She-Bolts



Scaffold Jacks



Coil & Ferrule Inserts



Construction Stakes

**13407 YORBA AVENUE
CHINO, CA 91710**

**(909) 590-0066
FAX (909) 590-0061**

SPECTRUMCONCRETEUSA.COM