



Standard ECP Configuration Includes:

- 081006 enclosure with mounting plate, hinges and breather/drain. Lighting contactors greater than 4 poles will be a 121208 enclosure.
- Captive, triple lead, quick release, hex head stainless steel bolts with spring-loaded action
- Tap-in mounting feet offer simple and secure installation and are easily replaceable
- Special neoprene cover gasket provides a watertight seal to meet NEMA requirements
- Internal neutral and ground bar
- Electrically held modular lighting contactor
- Two 3/4" NPT control conduit entries - one on top and one on bottom
- Twelve 1" NPT power conduit entries - six on top and six on bottom
- DSL nameplates are standard for all operator positions and Lamacoid nameplates are available upon request

Our XCPLC Lighting Contactors provide efficient use of power, greater utilization of daylight and automated control in the most extreme harsh and hazardous locations while extending lighting lifetime.

Applications:

- Areas requiring safe and efficient variable lighting control
- Areas with hazardous gas, vapors and dust
- Indoor or outdoor locations in damp, wet, dusty or corrosive environments

Features and Benefits:

- Variable lighting control utilizing manual on/off or automatic settings
- Photocell option provides maximum utilization of sunlight for energy conservation
- Modular lighting contactor design provides flexibility to add future power poles
- Lighting contacts are electrically held for superior performance
- Power poles convert from NO to NC with a simple 180° turn

Standard Materials:

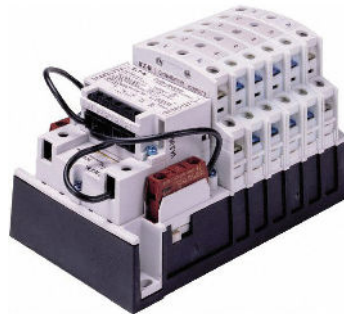
- Body and cover – copper-free aluminum
- Gasket – neoprene
- Cover bolts – steel
- Hinges – stainless steel

Certifications and Compliances:

- Class I, Divisions 1 & 2, Groups B, C, D
- Class I, Zones 1 & 2
- Class II, Division 1, Groups E, F, G
- Class II, Division 2, Groups F, G
- Class III
- NEMA Type 3R, 4, 7BCD, 9EFG
- UL Standard: 1203
- cUL to CSA Standard C22.2 No. 30
- Ex d IIB + H2

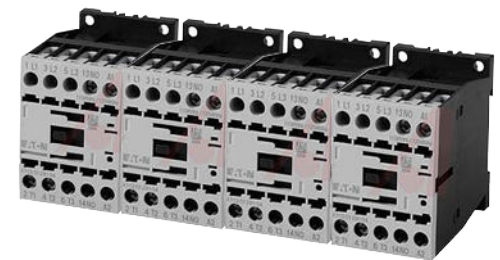
Electrical Ratings:

- Voltage: 600V
- Coil voltage: 120V
- Amperage: 30A
- Number of poles: 1-12 standard



Electrical Ratings:

Terminal block** TB
Timer** TR
EV2IH20 photocell (120V) PC1
EV2IH208 277 photocell (208-277V)PC2
Epoxy finish (external)S752
Epoxy finish (internal and external)S753
Lamacoid nameplate LID
Heater 120V.....	R11
Std. Drain.....	S756
Std. Breather & Drain.....	S756V



AMPS = 30A

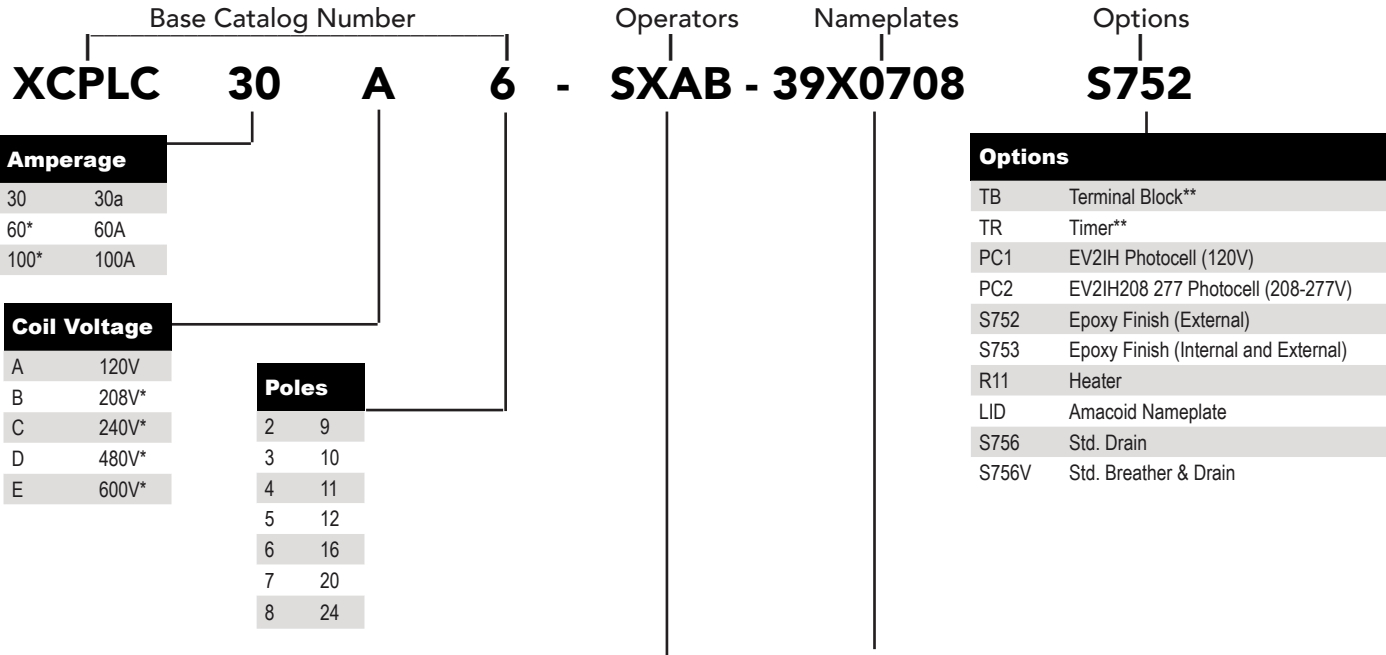
POLES	120V	POLES	120V
2	XCPLC30A2	8	XCPLC30A8
3	XCPLC30A3	9	XCPLC30A9
4	XCPLC30A4	10	XCPLC30A10
5	XCPLC30A5	11	XCPLC30A11
6	XCPLC30A6	12	XCPLC30A12
7	XCPLC30A7		



Catalog Number System

XCPLC 30 A 6-SXAB-39X0708 S752

XCPLC Lighting Contactor, 30A, 120V, 6 pole, HOA 3-position switch in position 1, no operator in position 2, red pilot light in position 3, green pilot light in position 4, HOA DSL in position 1, no DSL in position 2, ON DSL in position 3, OFF DSL in position 4, epoxy finish (external).

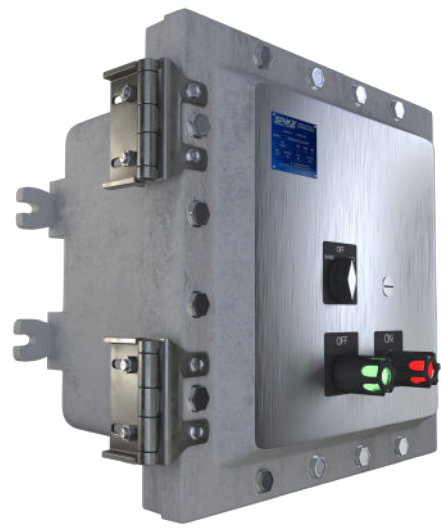


Select One Operator Symbol for Each of the Four Positions

- The first operator is in position 1, second operator in position 2, etc.
NOTE: If no operator is required, use the symbol X.
- A Pilot Light - Red (19534EMP009-J1)
 - B Pilot Light - Green (19534EMP009-J3)
 - C Pilot Light - Amber (19534EMP009-J6)
 - G Single Pushbutton - Black (19534EMP019)
 - Q 2-Position Switch (19534EMP049)
 - S 3-Position Switch (19534EMP069)
 - X No Operator

Select One Operator Symbol for Each of the Four Positions

- The first operator is in position 1, second operator in position 2, etc.
NOTE: If no operator is required, use the symbol X.
- 05 Start (DSL05)
 - 06 Stop (DSL06)
 - 07 On (DSL07)
 - 08 Off (DSL08)
 - 29 Hand Auto (DSL29)
 - 37 Start-Stop (DSL37)
 - 39 Hand Off Auto (DSL39)
 - 48 Off-On (DSL48)
 - X No Operator



Photocells are shipped separate for field installation.
* Additional configurations are available upon request. Please contact Customer Service for details.
** Timer and/or terminal block will require a larger enclosure (121808).